

# **U.S. History**

**Administered May 2018**

**RELEASED**



# U.S. HISTORY

## DIRECTIONS

Read each question carefully. Determine the best answer to the question from the four answer choices provided. Then fill in the answer on your answer document.

- 1 Which application of a new technology can be attributed to an invention of Thomas Edison?
- A Refrigerated railroad cars allowed food to be transported long distances.
  - B Light bulbs made it efficient for factory workers to work at night.
  - C Diesel engines were used in the production of airplanes.
  - D Sonar technology was used to track submarines.
- 

2

While my solutions were a little less complex than those offered by FDR, . . . I played a kind of New Deal cowboy who never hesitated to tackle many of the same problems.

—Gene Autry, country-and-western singer and actor

Why were country-and-western performers such as Gene Autry popular with U.S. radio audiences during the 1930s?

- F Their art related to the struggles of the period.
- G They shared stories of individuals who became wealthy.
- H They promoted work programs for rural communities.
- J Their art brought attention to global human rights issues.

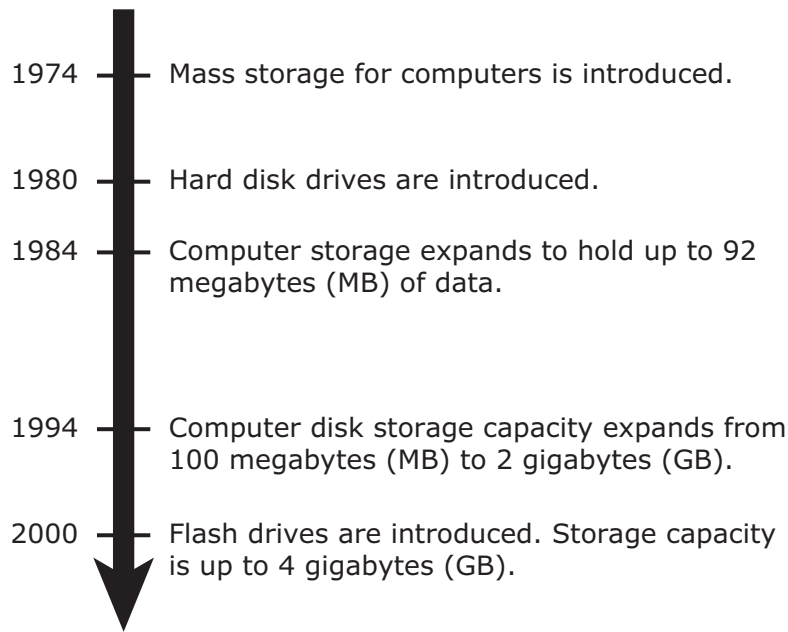
It is hereby declared to be the policy of the President that there shall be equality of treatment and opportunity for all persons in the armed services without regard to race, color, religion or national origin. This policy shall be put into effect as rapidly as possible, having due regard to the time required to effectuate any necessary changes without impairing efficiency or morale.

—President Harry S. Truman, *Executive Order 9981*,  
July 26, 1948

Which of the following contributed to President Truman's decision to issue this order?

- A** A lack of funding for veteran pensions
- B** Declining enlistment rates during peacetime
- C** Discrimination against minority service members
- D** A desire to repeal the draft

## The Evolution of Computer Memory Storage Capacity



Which conclusion about the U.S. economy is most supported by the information on this time line?

- F** Government regulations prompted companies to develop alternative production techniques.
  - G** Decreased globalization prompted companies to innovate and improve existing products.
  - H** Decreased demand for new technology forced producers to reduce manufacturing costs.
  - J** Marketplace competition drove producers to innovate and improve products.
- 

**5** What was one factor that helped turn the Great Plains into the Dust Bowl in the 1930s?

- A** Paying farmers to plant native grasses
- B** Increased demand for tobacco after World War I
- C** Numerous tornadoes occurring in the region
- D** Intense drought in the region

6

There was music from my neighbor's house through the summer nights. . . . The halls and . . . verandas are gaudy with primary colors and hair shorn in strange new ways and shawls beyond the dreams of Castile. . . . There was dancing now on the canvas in the garden. . . . By midnight the hilarity had increased.

—*F. Scott Fitzgerald, The Great Gatsby*

How does this excerpt reflect a significant turning point in American history?

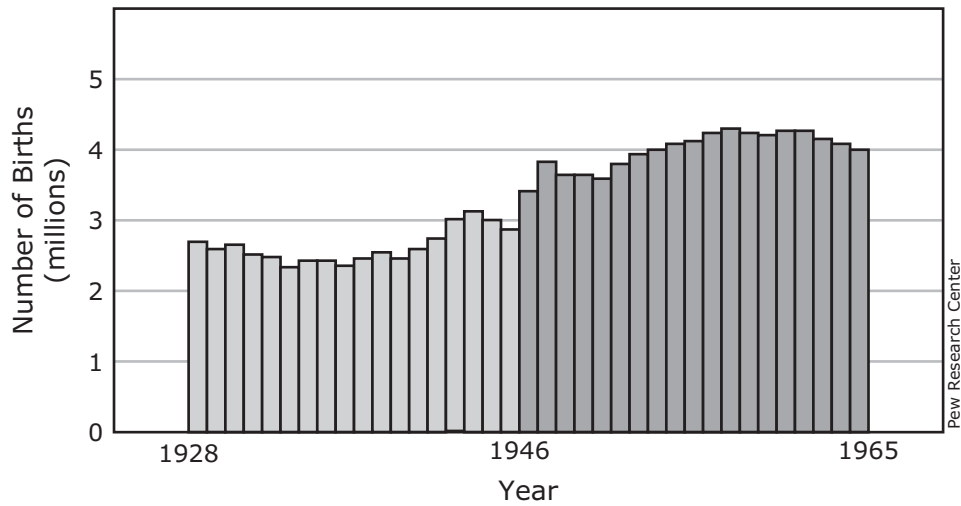
- F** It depicts the reaction to victory in the Spanish-American War.
- G** It portrays the changing social norms of the Jazz Age.
- H** It describes the experiences of immigrant workers during the Gilded Age.
- J** It details the industrial progress of the post-World War I era.

---

7 What was the overall goal of U.S. military intervention in Vietnam from 1964–1973?

- A** Eliminating trade barriers between the United States and Southeast Asia
- B** Isolating the Soviet Union by improving Chinese relations with the United States
- C** Promoting economic growth in the Pacific region
- D** Preventing communism from spreading throughout Southeast Asia

Number of U.S. Births by Year and Generation,  
1928–1965



Which occurrence was a result of the shift in the number of births that began in 1946?

- F** The decline of family farming
- G** The spread of new diseases
- H** The growth of the suburbs
- J** The reduction of defense spending



Tonight I want to have an unpleasant talk with you about a problem that is unprecedented in our history. With the exception of preventing war, this is the greatest challenge that our country will face during our lifetime. . . . It's a problem that we will not be able to solve in the next few years, and it's likely to get progressively worse through the rest of this century. . . . The oil and natural gas that we rely on for 75 percent of our energy are simply running out. In spite of increased effort, domestic production has been dropping steadily at about 6 percent a year. Imports have doubled in the last 5 years. . . . Unless profound changes are made to lower oil consumption, we now believe that early in the 1980s the world will be demanding more oil than it can produce.

—President Jimmy Carter, address to the nation, April 18, 1977

Which course of action did President Carter propose in order to solve this problem for the next generation?

- A** Contract with foreign nations to build wind turbines
- B** Reduce federal spending on solar cell energy research
- C** Drill fewer offshore wells to conserve marine life
- D** Develop alternative energy sources

### AN AWFUL CASE OF JUNE ODORS

By Maurice Ketten.



Source: Library of Congress

What was the most likely result of the publication of images such as this 1906 political cartoon?

- F** The government passed the Sherman Antitrust Act.
- G** Private companies refused to import foreign foods.
- H** The government passed the Pure Food and Drug Act.
- J** Labor unions protested unsafe working conditions.

**11** Which statement best explains how bank failures contributed to the Great Depression?

- A** People lost their savings because the government did not insure bank deposits.
- B** Business could not be done when President Franklin Roosevelt declared a bank holiday.
- C** The interest rates on bank loans were too high.
- D** Foreign investors did not invest enough in U.S. banks.



How did the event in this headline impact the Civil Rights movement?

- F** The focus of the movement shifted to the struggle of migrant workers.
- G** The movement lost credibility with the American public.
- H** The focus of the movement shifted to protesting U.S. involvement in foreign wars.
- J** The movement lost an important national leader.

As social conditions become more equal, the number of persons increases who, although they are neither rich enough nor powerful enough to exercise any great influence over their fellow-creatures, have nevertheless acquired or retained sufficient education and fortune to satisfy their own wants. They owe nothing to any man, they expect nothing from any man; they acquire the habit of always considering themselves as standing alone, and they are apt to imagine that their whole destiny is in their own hands.

—Alexis de Tocqueville, *Democracy in America*, 1835

Which American value is described in this excerpt?

- A Individualism
- B Populism
- C Liberty
- D Laissez-faire

---

**14** In the World War II era, what was the major reason for Jewish immigration to the United States?

- F To seek guaranteed universal suffrage
- G To escape famine and drought caused by natural disaster
- H To seek better educational opportunities
- J To escape state-sponsored genocide

Magneto Assembly Line  
at Ford Motor Company, 1913



From the collections of The Henry Ford, copy and reuse restrictions apply, <http://www.TheHenryFord.org/copyright.aspx>

How did the process shown in this photograph enhance the automobile industry?

- A** By speeding up production of automobiles at lower costs
- B** By requiring only licensed workers to produce the automobiles
- C** By ensuring high-quality automobiles for consumers at higher prices
- D** By developing new designs to test automobile safety standards

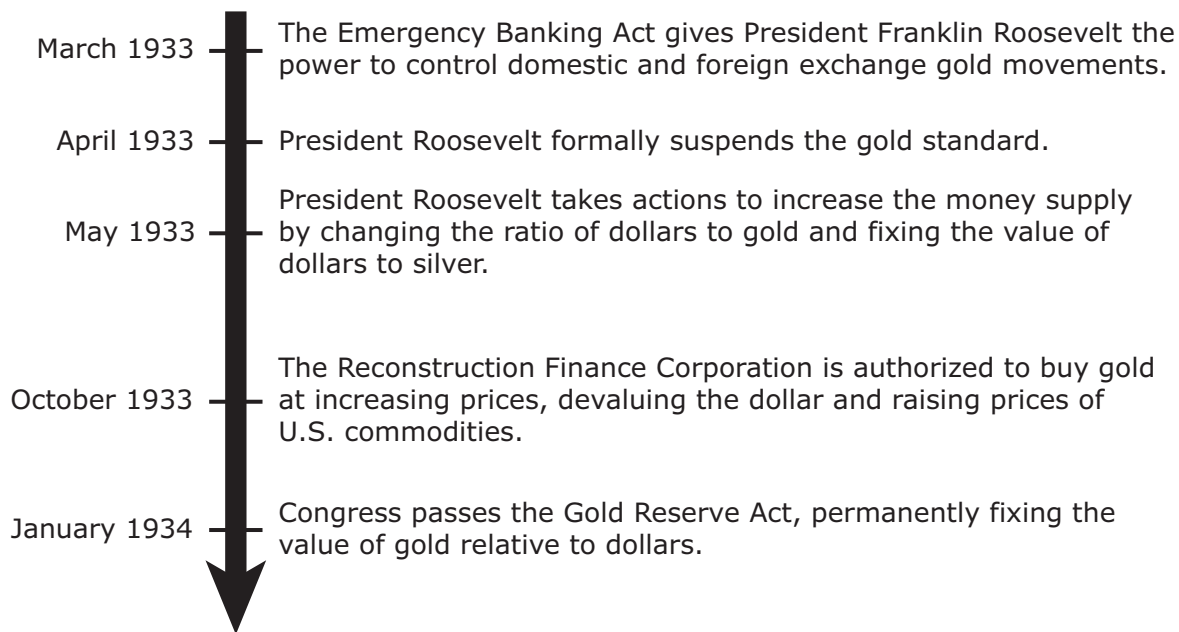
16

In November 1942, the National War Labor Board (NWLB) adopted the policy of “equal pay for equal work,” which had not been standard practice in industry.

What was the most likely purpose of this National War Labor Board order?

- F** To prevent unions from discriminating against unskilled workers during the war
- G** To weaken the “Rosie the Riveter” image for women working on the home front
- H** To double the output of equipment needed to support U.S. troops overseas
- J** To ensure fair treatment for women in the workplace during the war

## Selected Events in the History of the Gold Standard



What was the goal of the actions on this time line?

- A** To ensure deposits into customer savings accounts
- B** To increase government regulation of business
- C** To end speculation in the stock market
- D** To stabilize the national economy

- 18** This excerpt is from a book written by a Norwegian man who immigrated to the United States in the late 1800s.

Then west by train on road and route not known to us. We saw mountains, which must have been the Alleghenies, and felt much depressed. Was that America? Had we been fooled? We expected to see flat ground with no timber or boulders to clear. When we came far enough to see that kind of country our spirits rose again. . . .

—*Andreas Ueland, Recollections of an Immigrant*

These immigrants were relieved when they saw the type of land they were expecting because they —

- F** hoped to establish farms
- G** wanted to build factories
- H** planned to mine for gold
- J** wanted to work for the railroad

In 2015 the New York City Mayor's office reported that the city had recently accomplished the following:

- Reduced carbon emissions by one-fifth and achieved the city's cleanest air in 50 years
- Upgraded building codes to prepare for extreme weather like flooding and high winds
- Added nearly one million trees and six million square feet of reflective rooftop to the city landscape

Which challenges prompted New York City to take these actions?

- A** Increasing threats to large urban areas by foreign and domestic terrorism
  - B** A widening gap in income levels between socioeconomic groups in society
  - C** Escalating costs of providing health care and social services for senior citizens
  - D** Aging infrastructure and pollution caused by high population density
- 

**20** How did Bill Gates earn the title "World's Richest Man"?

- F** By creating social media sites
- G** By investing in global satellite communications
- H** By developing computer software
- J** By creating innovations in cell phone technology



Civil Rights Organizations

Organization	Description
1	Members armed themselves and were willing to take necessary means to protect their homes and families.
2	Leaders enforced the use of nonviolence among those engaging in sit-ins and other protest activities.
3	Leaders worked with existing laws and within the court system to increase the rights of African Americans.

Which organizations correctly complete this table?

**A**

1	NAACP
2	Black Panthers
3	SNCC

**B**

1	SNCC
2	CORE
3	Black Panthers

**C**

1	Black Panthers
2	SNCC
3	NAACP

**D**

1	CORE
2	NAACP
3	AIM

**II.** Absolute freedom of navigation upon the seas, outside territorial waters, alike in peace and in war, except as the seas may be closed in whole or in part by international action for the enforcement of international covenants.

*—President Woodrow Wilson, Fourteen Points*

Which of the causes underlying World War I was this provision of the Fourteen Points intended to prevent?

- F** Nationalism and militarism
- G** Blockades and unrestricted submarine warfare
- H** Secret treaties and alliances
- J** Imperialism and self-determination

State Skateboarding Park,  
Frankfurt, Germany



© iStock.com/AM-C

Bondi Skate Park,  
Sydney, Australia



© iStock.com/Kokkai Ng

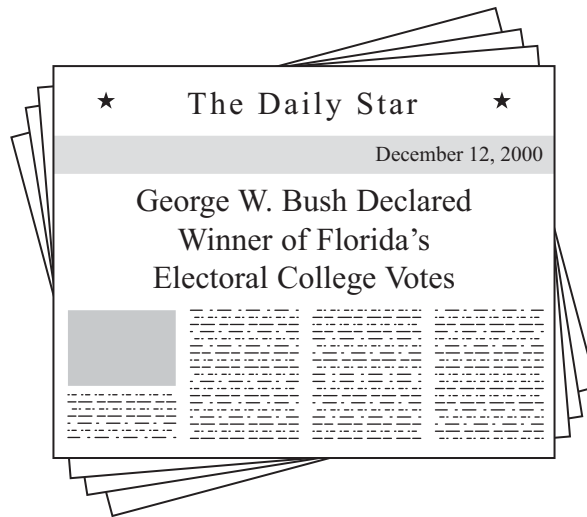
Skateboarding started in the late 1940s and early 1950s. California surfers wanted to find a way to surf when the water was calm. The modern skateboard originated from attaching wheels to simple wooden boards that resembled surfboards.

Which of the following developments is best illustrated by this information?

- A** Diffusion of American popular culture
- B** Growth of American student exchange programs
- C** Establishment of cultural imperialism
- D** Expansion of affirmative action

**24** What was the most important diplomatic effect of the Declaration of Independence for the United States?

- F** It allowed foreign governments to officially recognize the United States.
- G** It forced Great Britain to trade with the United States.
- H** It required Great Britain to pay war reparations to the United States.
- J** It allowed the United States to establish immigration quotas.



What role did the Supreme Court play in this declaration?

- A** The court ruled Florida's use of butterfly ballots violated the Equal Protection Clause.
- B** The court ruled on the constitutionality of the vote recount in Florida.
- C** The court determined that campaign contributions are forms of free speech.
- D** The court ruled that requiring literacy tests to vote was unconstitutional.

In 1884 Toynbee Hall was founded in a poor neighborhood in London. The primary mission of Toynbee Hall was to offer services to those in need, but it also gave university students first-hand experience with the effects of poverty. This allowed the students to develop practical solutions to further assist people in need. Many reformers in the United States soon adopted this model.

This model was evident in the United States through the works of —

- F** Frances Willard and her support of the temperance movement
- G** A. Philip Randolph and his protests during World War II
- H** Jane Addams and her programs for new immigrants
- J** Eugene V. Debs and his establishment of the American Railway Union

- 
- 27** Which action caused the United States to engage in a “police action” on the Korean Peninsula in 1950?
- A** The collapse of South Korea’s democratic government
  - B** The assassination of North Korea’s political leader
  - C** South Korea’s blockade of North Korea
  - D** North Korea’s invasion of South Korea

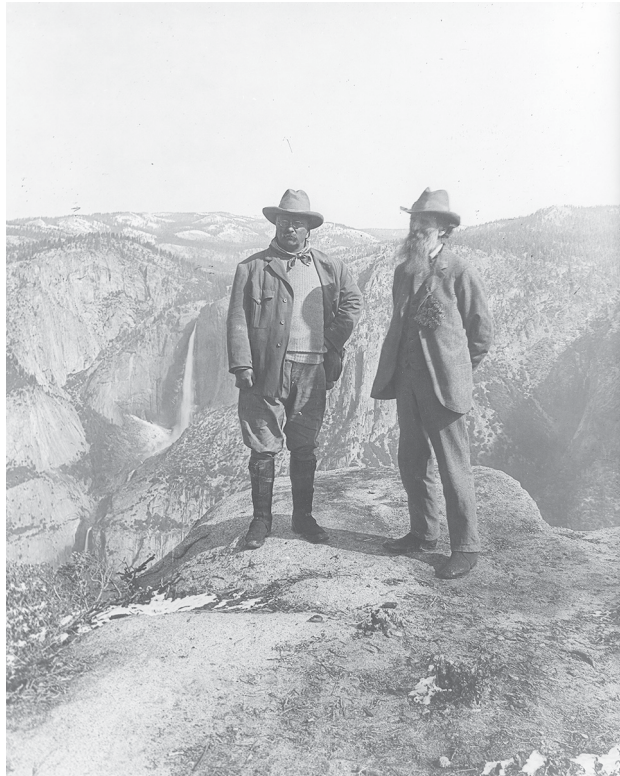
- Hanford, Washington
- Oak Ridge, Tennessee
- Los Alamos, New Mexico

Which technological advancement was developed in installations near these cities during World War II?

- F** Long-range submarines
  - G** Radio navigation
  - H** Atomic bombs
  - J** Jet engines
- 

- 29** The Knights of Labor and the American Federation of Labor developed in response to the —
- A** increased need to protect worker interests
  - B** decreased power of political machines
  - C** increased demand for skilled workers
  - D** decreased profitability of the agricultural sector

President Theodore Roosevelt and  
John Muir on Glacier Point, Yosemite  
Valley, California, 1903



Source: Library of Congress,  
Prints and Photographs Division

What was the most likely topic of discussion between these men?

- F** Limiting the power of major railroad companies
- G** Creating alternative maritime shipping routes
- H** Designating additional land as national parks
- J** Reducing the influence of environmental lobbyists



\_\_\_\_\_? \_\_\_\_\_: A term that originated during President Lyndon Johnson's administration to describe the perception of a discrepancy between public statements and actual policies.

Which term completes this text box?

- A Hawk mentality
- B Credibility gap
- C Living-room war
- D Flexible response

Percent of Voting-Age Population Casting Votes in Selected Presidential Elections

	1964	1968
Alabama	35.9	52.7
Georgia	43.3	43.4
Louisiana	47.3	54.8
Mississippi	33.9	53.2
North Carolina	52.8	54.3
South Carolina	39.4	46.7
Virginia	41.1	50.1

Source: U.S. Census Bureau

How did the Voting Rights Act of 1965 contribute to the changes shown in this table?

- F It helped reduce voter discrimination at polling sites.
- G It increased state revenues associated with poll taxes.
- H It contributed to increased involvement of lobbyists in political campaigns.
- J It helped voters determine educational policy based on literacy test results.

**33** What was one economic effect of the Spanish–American War?

- A** Shipbuilding industries in the United States declined.
- B** New free and fair trade treaties were established between the United States and developing countries.
- C** The United States gained direct access to additional natural resources and overseas markets.
- D** Demand for coal and petroleum as energy sources declined.

---

**34**



Who is the recipient of this award?

- F** Frances Perkins
- G** Hillary Clinton
- H** Sandra Day O'Connor
- J** Barbara Jordan

## Issues Regarding the Selection of U.S. Senators Prior to 1913

- All senators were chosen by state legislatures, but states used different procedures to select them.
- Intimidation and bribery of state legislators were often used to influence the selection of senators.
- Deadlocked legislatures were often unable to select senators, leaving vacancies for several years.

Which of the following was implemented in 1913 to solve these problems?

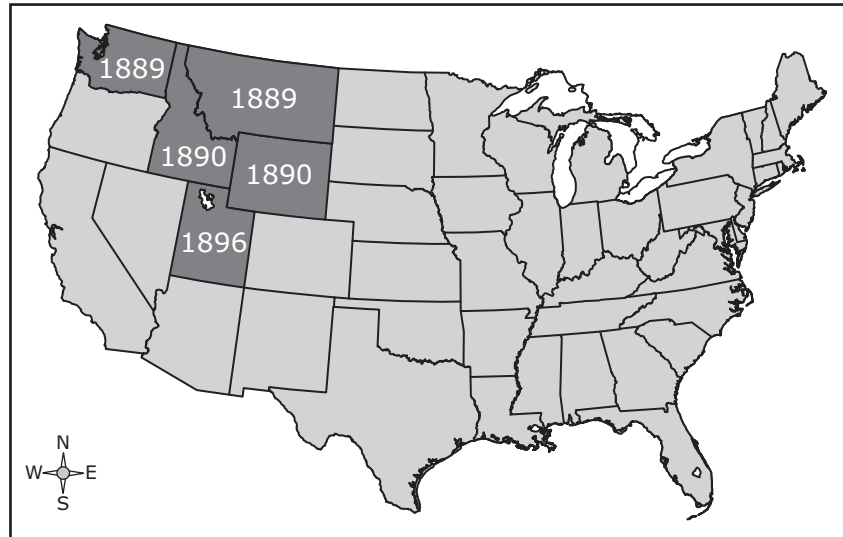
- A** Each state held party conventions in order to select senators.
- B** A national referendum was held to standardize the procedures for selecting senators.
- C** Open primaries were used to limit the choices of senators who could be confirmed by state legislatures.
- D** A constitutional amendment was ratified that required senators to be elected directly by popular vote.

---

**36** How did the *Brown v. Board of Education* decision influence the Civil Rights movement?

- F** By discouraging activists from relying on the judicial system
- G** By guaranteeing scholarships to minority college students
- H** By providing a judicial basis for achieving equality in other areas
- J** By eliminating social barriers associated with hiring practices

## Years of Statehood for Selected States, 1889–1896



Which factor facilitated statehood for the darker-shaded areas?

- A** The introduction of barbed wire throughout the Great Plains
- B** The expansion of railway lines throughout the West
- C** The acceptance of Mormons by other religious sects in the East
- D** The peaceful integration of settlers with American Indian populations

The great rule of conduct for us in regard to foreign nations is in extending our commercial relations, to have with them as little political connection as possible. So far as we have already formed engagements, let them be fulfilled with perfect good faith. Here let us stop. Europe has a set of primary interests which to us have none; or a very remote relation. Hence she must be engaged in frequent controversies, the causes of which are essentially foreign to our concerns.

—George Washington, *Farewell Address*, 1796

Which group followed the advice given in this address?

- F** Expansionists during the Spanish-American War
- G** Isolationists regarding the Treaty of Versailles after World War I
- H** Hawks in Congress during the Vietnam War
- J** Civil libertarians in Congress after the start of the War on Terror

- 
- 39** In the late 1800s, Sanford B. Dole contributed to the expansion of the United States by advocating the annexation of —
- A** Puerto Rico
  - B** the Panama Canal Zone
  - C** Hawaii
  - D** the Philippines

In the spring of 1882, the Chinese Exclusion Act was passed by Congress and signed by President Chester A. Arthur. This act provided an absolute 10-year moratorium on Chinese labor immigration. . . . When the exclusion act expired in 1892, Congress extended it for 10 years in the form of the Geary Act.

—“*Chinese Exclusion Act (1882)*,” *National Archives and Records Administration, www.ourdocuments.gov*  
(accessed August 31, 2013)

What was the main reason given for the creation of these restrictions?

- F** Preventing the depletion of natural resources
- G** Discouraging anti-American activism
- H** Reducing competition for U.S. jobs
- J** Addressing a lack of urban housing



How did this treaty contribute to the end of the Cold War?

- A** By reducing tensions associated with the threat of nuclear war
- B** By providing an exchange of weapons for war hostages
- C** By allowing secret weapons technologies to be shared
- D** By establishing an official cease-fire

- 42 These gasoline rationing stamps were printed beginning in January 1974, but were never used.



Source: Library of Congress, Prints and Photographs Division

Which situation led the U.S. government to print these coupons?

- F The economic collapse of the Soviet Union caused by increased defense spending
- G A shortage of consumer goods following the end of a global conflict
- H Economic deflation caused by increased trade globalization
- J An embargo organized by the Organization of Petroleum Exporting Countries



In the future there will be tele-medicine, where you can operate on someone somewhere else in the world. I don't think that's far-fetched science fiction anymore. I think that I'll see that in my lifetime.

—Dr. Michael Palese, Mount Sinai Hospital,  
New York, 2012

Innovations in which industry will most likely make this kind of surgery possible?

- A** Robotics
- B** Aeronautics
- C** Chemistry
- D** Nursing

---

**44** How did the Nineteenth Amendment expand the democratic process?

- F** By prohibiting discrimination in voting on the basis of race
- G** By eliminating the poll tax
- H** By prohibiting discrimination in voting on the basis of gender
- J** By lowering the voting age



Which industry is most responsible for these quality-of-life improvements?

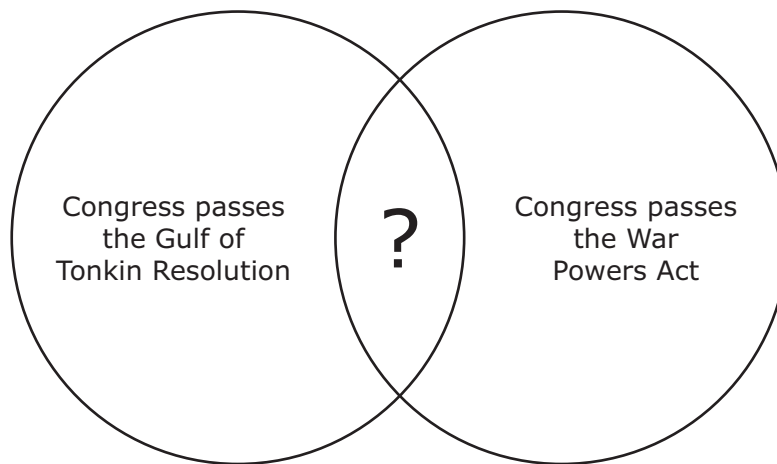
- A** Communications
- B** Aerospace
- C** Medical research
- D** Transportation

It was during the First World War that a silent pilgrimage took its first steps within the borders of this country. . . . It would not end until the 1970s. . . . Over the course of six decades, some six million black southerners left the land of their forefathers and fanned out across the country for an uncertain existence in nearly every other corner of America. . . .

—*Isabel Wilkerson, The Warmth of Other Suns: The Epic Story of America’s Great Migration, 2010*

What was a primary reason for the demographic shift described in this excerpt?

- F** Increased demand for sharecroppers in the North
- G** Limited economic opportunities for African Americans in the South
- H** Increased availability of manufactured goods in the North
- J** A lack of educational institutions for African Americans in the South



Which similarity completes this Venn diagram?

- A** Included debate over the use of line-item veto
- B** Violated the principle of due process
- C** Involved debate over the extent of executive and legislative authority
- D** Deemed unconstitutional by the judicial branch

- 48 What prompted the House Un-American Activities Committee (HUAC) to target the “Hollywood Ten”?
- F Support for American isolationism in the years leading up to World War II
  - G Increased political pressure from racial groups regarding civil rights legislation
  - H Growing anxiety related to the economic effects of the Great Depression
  - J Fear of communist infiltration within the American entertainment industry
- 

49



Source: NARA

What was the purpose of this type of Office of War Information poster?

- A To provide jobs to unemployed artists during an economic crisis
- B To help the public understand its role in national security
- C To encourage young men to join the war effort
- D To protect civil liberties during times of national emergency

New Jersey lawyer Ravinder Singh Bhalla . . . went to visit a client at the Metropolitan Detention Center in Brooklyn. . . . The guards would not let him in because he refused to remove his turban. Mr. Bhalla informed the guards that the turban is not a hat, but is a religious symbol required of all observant Sikhs. . . . He cited his \_\_\_\_?\_\_\_\_ right to practice his religion and his \_\_\_\_?\_\_\_\_ protection against unreasonable searches, noting that he had already passed through the metal detector.

Mr. Bhalla took his case to the Federal District Court in Newark. Then on January 17, the Federal Bureau of Prisons changed the policy.

*—U.S. Congressman Edolphus Towns, address to the House of Representatives, February 7, 2003*

Which two amendments should replace the question marks in this excerpt?

- F** Fifth Amendment and Eighth Amendment
- G** Third Amendment and Seventh Amendment
- H** First Amendment and Fourth Amendment
- J** Second Amendment and Sixth Amendment

---

**51** What was the reaction of many Americans to the Watergate scandal?

- A** Confidence in the presidential selection process
- B** Support for the containment of communism
- C** Discontent over the antiwar and civil rights protests
- D** Cynicism about government and elected politicians

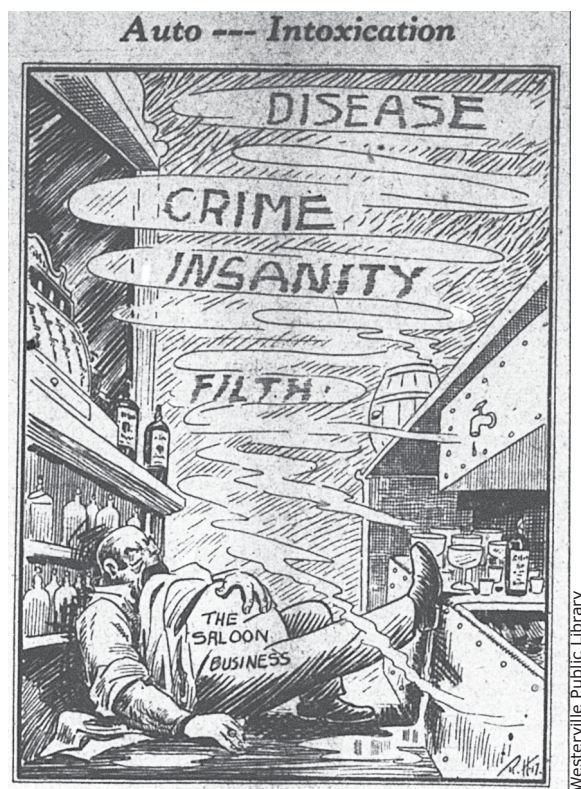
The attack took place on American soil, but it was an attack on the heart and soul of the civilized world. And the world has come together to fight a new and different war, the first, and we hope the only one, of the 21st century. A war against all those who seek to export terror, and a war against those governments that support or shelter them.

—President George W. Bush, news conference, October 11, 2001

Which event prompted this speech by President Bush?

- F** The attacks on the World Trade Center and the Pentagon
- G** The attack on the USS *Cole*
- H** The mail-bombing campaign of the Unabomber
- J** The bombing of a federal building in Oklahoma City

- 
- 53** What was one effect of the arrival of the American Expeditionary Forces in Europe during World War I?
- A** Italy left the Central powers alliance.
  - B** The heir to the Austro-Hungarian throne was assassinated in Sarajevo.
  - C** The Allies were able to launch a major counterattack on the western front.
  - D** Russian forces were able to withdraw from the eastern front.



What was a result of the social problems presented in this 1917 political cartoon?

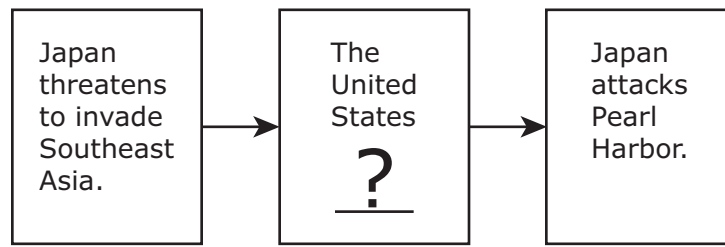
- F** Government leaders introduced health-care reform laws.
- G** Lobbyists focused attention on the power of corporate monopolies.
- H** Women worked to improve conditions in tenement houses.
- J** Progressives worked to ratify a prohibition amendment.

**55** In 1919, Charles Schenck was charged with violating the Espionage Act. The Supreme Court ruled that Schenck's actions created a "clear and present danger."

How did the decision in this case affect the rights of U.S. citizens?

- A** By establishing restrictions on the right to vote
- B** By protecting the freedoms of religious minorities
- C** By placing limits on freedom of expression
- D** By protecting the rights of accused persons



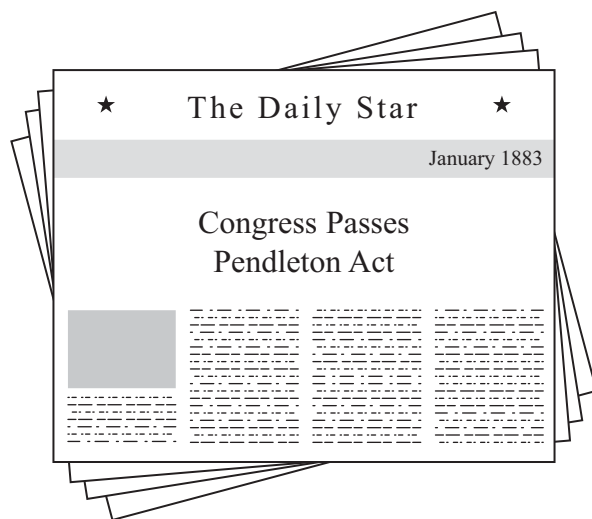


Which action replaces the question mark on this cause-and-effect diagram?

- F** implements an embargo against Japan
  - G** sends ground troops to fight the Chinese
  - H** bans the sale of weapons to China
  - J** appeases Japanese demands for new territory
- 

**57** Which of the following was a significant effect of New Deal legislation?

- A** Income tax rates fell to historic lows.
- B** The federal government took on new roles.
- C** The regulation of intrastate trade was transferred to the states.
- D** States became the sole enforcers of immigration law.



This legislation affected how federal employees were hired. The law now required government jobs to be —

- F** based on the political party affiliation of the applicant
- G** determined by a merit system based on civil service examinations
- H** based on the approval of lawmakers
- J** set aside for business executives of large corporations

We claim for ourselves every single right that belongs to a freeborn American, political, civil and social; and until we get these rights we will never cease to protest and assail the ears of America. The battle we wage is not for ourselves alone but for all true Americans.

—*W. E. B. Du Bois, Niagara Movement Address to the Country, 1906*

How did the ideas presented in this address affect the early Civil Rights movement in the United States?

- A** By encouraging African Americans to achieve equality through vocational education
- B** By directly supporting Marcus Garvey's Black Star Steamship Line
- C** By encouraging African Americans to accept Jim Crow laws
- D** By forming the basis for the National Association for the Advancement of Colored People (NAACP)

Beneficiaries as of October 2015

Type of Beneficiary	Total (thousands)
Aged 65 or older	43,947
Disabled, under age 65	14,228
Other	6,817

Which New Deal agency was created to specifically serve this population?

- F** Federal Housing Administration
- G** Securities and Exchange Commission
- H** Federal Deposit Insurance Corporation
- J** Social Security Administration

- 61** Which action is prohibited under provisions of Title IX of the Education Amendments of 1972?
- A** A principal refuses to organize athletic events and programs for female sports teams.
  - B** The funding for a music program is cut because of declining tax revenues.
  - C** A teacher attempts to organize a charity basketball game for faculty and students.
  - D** The staffing for a foreign language class is reduced due to lack of interest.

---

**62**

Workers Stringing Beans in a Maryland Factory, 1909



Source: Library of Congress, Prints and Photographs Division

What were photographs such as this one taken by Lewis Hine primarily intended to accomplish?

- F** Encourage leaders to make segregation in schools illegal
- G** Document labor conditions during an economic crisis
- H** Depict the evils of capitalism in communist propaganda
- J** Focus attention on the need for child labor reforms

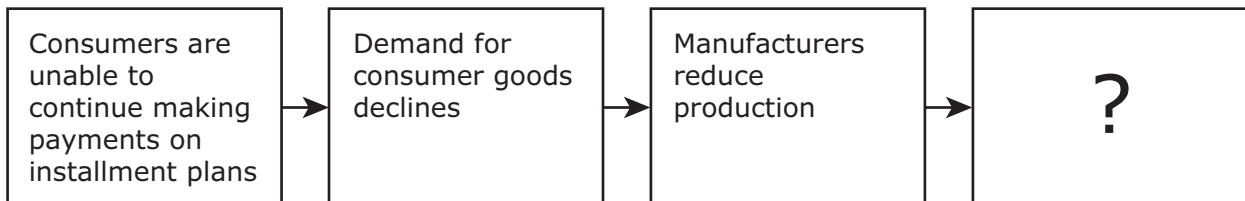
Lacrosse gained popularity . . . in the mid-nineteenth century . . . [in] the urban areas of New York, Philadelphia, and especially Baltimore and Annapolis. Advent of the synthetic stick and conversion of the field to a hockey-like box . . . in the 1930s made lacrosse even more popular. . . . Sporadically disappearing and reappearing, today the old native game enjoys a record following. Organized professional leagues have surfaced during the past two decades, and college intramural and varsity lacrosse, which have long thrived in the northeast, are established at state universities across the South and West.

—Anthony Aveni, *Colonial Williamsburg Journal*, 2010

A student could use this excerpt in a paper about the —

- A** challenges of preserving American Indian traditional clothing
- B** movement to reform American Indian schools
- C** contributions of American Indians to U.S. culture
- D** pressure on American Indians to assimilate

Events in the United States in the Late 1920s



Which action completes this cause-and-effect diagram?

- F** Banks lower interest rates
- G** Elected leaders lower tariff rates
- H** Companies lay off employees
- J** Labor unions demand higher wages

- 65** What important military contribution did Navajo Code Talkers make during World War II?
- A** They were part of a volunteer group of U.S. pilots that defended China from Japanese aggression.
  - B** They were one of the groups that transmitted secret military information in the Pacific Theater.
  - C** They were among the first black servicemen to fly as military aviators in the U.S. armed forces.
  - D** They were members of the tank division that helped liberate France after the invasion of Normandy.
- 

- 66** Which box lists characteristics of the 1960s?

**F**

- Prohibition
- The Lost Generation
- The Harlem Renaissance
- Religious fundamentalism

**H**

- The counterculture
- The Civil Rights movement
- The Vietnam War
- The Space Race

**G**

- Widespread unemployment
- New Deal programs
- The Golden Age of Hollywood
- The Dust Bowl

**J**

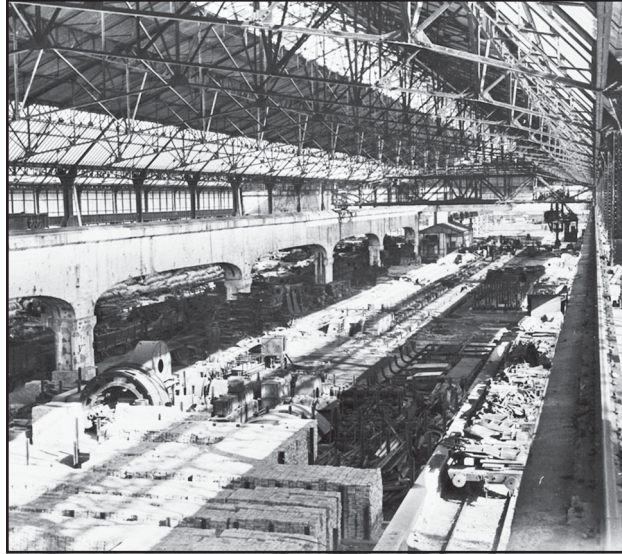
- Televangelists
- Neoconservatism
- Video games
- The fall of the Soviet Union

French Steel Plant, 1945



Courtesy of the George C. Marshall Foundation, Lexington, Virginia

The Same French Steel Plant, 1948



Courtesy of the George C. Marshall Foundation, Lexington, Virginia

Which action best explains the differences shown in these photographs?

- A** The United States gave economic assistance through the Marshall Plan.
- B** The United States and the Soviet Union created an alliance after World War II.
- C** U.S. leaders created the United Nations.
- D** The Soviet Union established the "Iron Curtain" after World War II.

**68** Which action is the best example of a civic responsibility?

- F** Writing an editorial piece for a newspaper
- G** Volunteering to sell raffle tickets
- H** Voting on election day
- J** Opening a business











**STAAR**  
**U.S. History**  
**May 2018**



806424