

STATE OF TEXAS ASSESSMENTS OF ACADEMIC READINESS

Summary Report

ENGLISH I

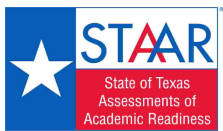
All Students

STATEWIDE

Report Date: FALL 2020
Date of Testing: FALL 2020

Administration Summary			Number of Students Tested	Average Scale Score	Results for Each Reporting Category*																									
					Number	Percent	1		2		3		4		5		6													
Students Tested	58522	67			Did Not Meet	Approaches	Meets	Masters	Understanding/ Analysis Across Genres	Understanding/ Analysis of Literary Texts	Understanding/ Analysis of Informational Texts	Composition	Revision	Editing	Number of Points Possible															
Students Not Tested															8		13		13		16		9		9					
Absent	9897	11			#	%	#	%	#	%	#	%	#	%	#	%	#	%	#	%										
Other	18470	21																			Number of Points Scored									
Total Documents Submitted	86889	100																												
Legend																														
--- = No Data Reported For Fewer Than Five Students																														
All Students	58522	3634			40046	68	18476	32	7813	13	891	2	4.0	50	6.3	48	5.7	44	6.1	38	4.8	54	5.1	57						
Male	36864	3603	26040	71	10824	29	4167	11	336	1	3.9	49	6.1	47	5.6	43	5.8	36	4.8	53	5.0	55								
Female	21655	3687	14004	65	7651	35	3646	17	555	3	4.2	52	6.6	50	5.9	46	6.6	41	4.9	54	5.3	59								
No Information Provided	3	---	---	---	---	---	---	---	---	---	---	---	---	---	---	---	---	---	---	---	---	---								
Hispanic/Latino	38789	3620	27060	70	11729	30	4840	12	447	1	4.0	49	6.1	47	5.7	44	6.1	38	4.8	53	5.0	56								
American Indian or Alaska Native	177	3616	124	70	53	30	21	12	3	2	4.0	50	6.1	47	5.5	42	6.1	38	4.8	53	5.3	59								
Asian	1105	3886	577	52	528	48	351	32	139	13	4.7	59	7.3	56	6.9	53	7.5	47	5.4	60	6.0	67								
Black or African American	9694	3586	7078	73	2616	27	811	8	34	0	3.9	49	6.0	46	5.3	41	5.8	36	4.7	53	5.0	55								
Native Hawaiian or Other Pacific Islander	86	3594	63	73	23	27	11	13	1	1	4.2	52	5.5	43	5.2	40	6.3	39	4.7	53	5.2	58								
White	7785	3721	4591	59	3194	41	1630	21	243	3	4.2	53	6.9	53	6.2	47	6.7	42	5.1	56	5.4	60								
Two or More Races	780	3698	472	61	308	39	138	18	23	3	4.2	52	6.8	52	6.1	47	6.5	40	5.0	55	5.5	61								
No Information Provided	106	3520	81	76	25	24	11	10	1	1	3.6	45	5.6	43	5.3	41	5.1	32	4.5	50	4.7	52								
Economically Disadvantaged	Yes	42703	3605	30380	71	12323	29	4640	11	340	1	3.9	49	6.1	47	5.6	43	5.9	37	4.7	53	5.0	55							
	No	15688	3713	9574	61	6114	39	3154	20	549	3	4.2	53	6.8	52	6.2	47	6.6	41	5.0	56	5.4	60							
	No Information Provided	131	3576	92	70	39	30	19	15	2	3.7	46	6.1	47	5.5	42	5.2	32	4.8	53	4.8	53								
Title I, Part A	Participants	33618	3629	23340	69	10278	31	4453	13	514	2	4.0	50	6.2	47	5.7	44	6.1	38	4.8	53	5.1	56							
	Nonparticipants	24762	3641	16603	67	8159	33	3336	13	375	2	4.0	50	6.4	49	5.8	44	6.2	38	4.8	54	5.1	57							
	No Information Provided	142	3589	103	73	39	27	24	17	2	3.8	47	6.1	47	5.4	42	5.6	35	4.8	53	4.8	53								
Migrant	Yes	388	3547	297	77	91	23	20	5	0	3.8	47	5.5	43	5.1	39	5.7	36	4.6	51	4.7	53								
	No	57960	3635	39625	68	18335	32	7762	13	889	2	4.0	50	6.3	48	5.7	44	6.1	38	4.8	54	5.1	57							
	No Information Provided	174	3587	124	71	50	29	31	18	2	3.8	48	6.1	47	5.5	42	5.5	34	4.8	53	4.7	52								
Limited English Proficient	Current LEP	19250	3522	15538	81	3712	19	956	5	21	0	3.7	46	5.4	42	5.1	39	5.4	34	4.3	48	4.6	51							
	Non-LEP (Monitored 1st Year)	338	3613	235	70	103	30	33	10	4	3.9	49	6.1	47	5.7	44	6.2	38	4.8	53	4.9	54								
	Non-LEP (Monitored 2nd Year)	337	3800	155	46	182	54	78	23	4	4.6	57	7.3	57	6.6	51	7.3	46	5.6	62	5.9	66								
	Non-LEP (Monitored 3rd Year)	441	3860	183	41	258	59	146	33	11	4.8	59	7.7	59	7.1	54	7.5	47	5.7	64	6.1	67								
	Non-LEP (Monitored 4th Year)	778	3893	278	36	500	64	269	35	32	4	4.8	60	7.9	60	7.4	57	7.7	48	5.8	64	6.2	69							
	Non-LEP (Post Monitoring)	722	3985	211	29	511	71	315	44	48	7	5.1	63	8.6	66	7.9	61	8.0	50	6.1	68	6.6	73							
	Other Non-LEP	36478	3677	23314	64	13164	36	5991	16	769	2	4.1	52	6.6	51	5.9	46	6.4	40	5.0	56	5.3	59							
	No Information Provided	178	3559	132	74	46	26	25	14	2	3.6	45	5.9	45	5.4	42	5.3	33	4.7	52	4.6	52								
Bilingual	Participants	106	3714	60	57	46	43	19	18	2	4.3	53	7.1	54	6.3	48	6.6	41	5.0	56	5.1	57								
	Nonparticipants	58216	3634	39837	68	18379	32	7767	13	887	2	4.0	50	6.3	48	5.7	44	6.1	38	4.8	54	5.1	57							
	No Information Provided	200	3556	149	75	51	26	27	14	2	3.7	46	5.9	45	5.4	41	5.3	33	4.6	51	4.7	52								
ESL	Participants	18278	3519	14799	81	3479	19	888	5	19	0	3.6	46	5.4	42	5.1	39	5.4	34	4.3	48	4.6	51							
	Nonparticipants	40047	3687	25101	63	14946	37	6898	17	870	2	4.2	52	6.6	51	6.0	46	6.5	40	5.0	56	5.3	59							
	No Information Provided	197	3563	146	74	51	26	27	14	2	3.7	46	5.9	46	5.5	42	5.4	33	4.6	52	4.7	52								
Special Education	Yes	7733	3468	6551	85	1182	15	307	4	5	0	3.5	44	5.3	41	4.9	37	4.8	30	4.2	47	4.3	48							
	No	50630	3659	33379	66	17251	34	7482	15	884	2	4.1	51	6.4	49	5.8	45	6.3	40	4.9	55	5.2	58							
	No Information Provided	159	3582	116	73	43	27	24	15	2	3.7	47	6.0	46	5.4	42	5.5	34	4.8	53	4.7	52								
Gifted/Talented	Participants	1343	4390	186	14	1157	86	1033	77	410	31	6.0	75	10.2	78	9.9	76	10.1	63	6.9	77	7.6	84							
	Nonparticipants	57027	3616	39749	70	17278	30	6755	12	479	1	4.0	49	6.2	47	5.6	43	6.0	38	4.8	53	5.0	56							
	No Information Provided	152	3573	111	73	41	27	25	16	2	3.7	47	6.0	46	5.4	42	5.4	34	4.7	52	4.7	52								
At-Risk	Yes	50201	3584	36573	73	13628	27	4379	9	101	0	3.9	48	6.0	46	5.4	42	5.9	37	4.7	52	4.9	55							
	No	8163	3940	3356	41	4807	59	3410	42	788	10	4.9	61	8.1	62	7.5	58	7.8	49	5.8	64	6.3	70							
	No Information Provided	158	3552	117	74	41	26	24	15	2	3.6	46	5.8	45	5.4	41	5.4	34	4.5	50	4.7	52								

* Results for students who took the test with the Braille, American Sign Language videos accommodation, or the paper STAAR with embedded supports are not included in the reporting category results.



STATE OF TEXAS ASSESSMENTS OF ACADEMIC READINESS

Constructed Responses Summary Report

ENGLISH I

All Students

STATEWIDE

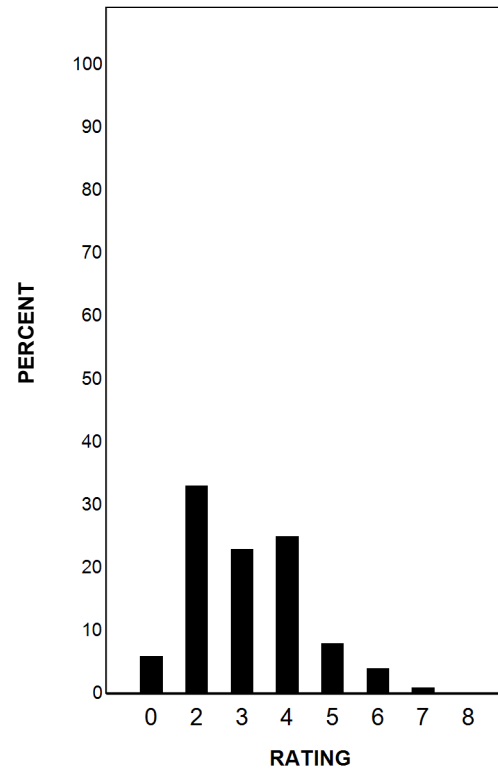
Report Date: FALL 2020
Date of Testing: FALL 2020

--- = No Data Reported For Fewer Than Five Students

Written Composition Rating Summary*

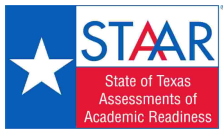
Expository Composition

Rating	#	%
0	3774	6
2	19159	33
3	13168	23
4	14469	25
5	4870	8
6	2259	4
7	545	1
8	207	0
Total	58451	100



Each composition has been scored independently by two readers. The written composition rating of 0-8 represents the summation of these scores.

* Results for students who took the test with the Braille, American Sign Language videos accommodation, or the paper STAAR with embedded supports are not included in this report.



STATE OF TEXAS ASSESSMENTS OF ACADEMIC READINESS

Summary Report

ENGLISH I

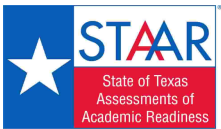
First-Time Tested Students

STATEWIDE

Report Date: FALL 2020
Date of Testing: FALL 2020

Administration Summary			Number of Students Tested	Average Scale Score	Results for Each Reporting Category*																									
					Number	Percent	1		2		3		4		5		6													
Students Tested	17022	65			Did Not Meet	Approaches	Meets	Masters	Understanding/ Analysis Across Genres	Understanding/ Analysis of Literary Texts	Understanding/ Analysis of Informational Texts	Composition	Revision	Editing	Number of Points Possible															
Students Not Tested															8		13		13		16		9		9					
Absent	3213	12			#	%	#	%	#	%	#	%	#	%	#	%	#	%	#	%										
Other	5982	23																			Number of Points Scored									
Total Documents Submitted	26217	100			--- = No Data Reported For Fewer Than Five Students																									
Legend																														
All Students					17022	3788	8672	51	8350	49	5432	32	889	5	4.4	55	7.4	57	6.8	52	6.6	41	5.4	60	5.7	64				
Male					10135	3707	5817	57	4318	43	2602	26	334	3	4.2	52	6.9	53	6.4	49	6.0	37	5.2	57	5.4	60				
Female			6884	3906	2853	41	4031	59	2830	41	555	8	4.7	59	8.0	62	7.4	57	7.5	47	5.7	63	6.2	69						
No Information Provided			3	---	---	---	---	---	---	---	---	---	---	---	---	---	---	---	---	---	---	---	---	---						
Hispanic/Latino			11480	3757	6055	53	5425	47	3414	30	446	4	4.3	54	7.2	55	6.7	51	6.4	40	5.3	59	5.6	62						
American Indian or Alaska Native			59	3717	34	58	25	42	16	27	3	5	4.2	53	6.8	53	6.4	49	5.9	37	5.3	59	5.6	63						
Asian			487	4283	117	24	370	76	316	65	138	28	5.7	71	9.4	73	9.0	70	9.5	59	6.6	73	7.2	80						
Black or African American			2112	3656	1312	62	800	38	427	20	34	2	4.0	50	6.7	51	6.0	46	5.7	36	5.0	56	5.3	59						
Native Hawaiian or Other Pacific Islander			23	3670	14	61	9	39	6	26	1	4	4.4	55	6.9	53	6.0	46	7.0	43	5.0	56	5.6	62						
White			2546	3934	998	39	1548	61	1135	45	243	10	4.8	61	8.3	64	7.5	58	7.5	47	5.7	64	6.2	69						
Two or More Races			266	3912	105	39	161	61	111	42	23	9	4.8	61	8.2	63	7.3	56	7.2	45	5.7	64	6.4	71						
No Information Provided			49	3462	37	76	12	24	7	14	1	2	3.4	43	5.6	43	4.8	37	4.5	28	4.4	49	4.4	49						
Economically Disadvantaged																														
			Yes	11884	3715	6704	56	5180	44	3058	26	340	3	4.2	52	7.0	54	6.4	49	6.1	38	5.2	57	5.5	61					
			No	5062	3962	1915	38	3147	62	2359	47	547	11	4.9	61	8.3	64	7.7	59	7.7	48	5.8	65	6.3	70					
			No Information Provided	76	3577	53	70	23	30	15	20	2	3	3.6	45	6.3	48	5.4	42	5.1	32	4.8	53	4.7	52					
Title I, Part A																														
			Participants	10144	3796	5092	50	5052	50	3294	32	513	5	4.4	55	7.4	57	6.8	53	6.7	42	5.4	60	5.8	64					
			Nonparticipants	6803	3777	3527	52	3276	48	2122	31	374	5	4.4	55	7.4	57	6.7	52	6.5	41	5.3	59	5.7	63					
			No Information Provided	75	3615	53	71	22	29	16	21	2	3	3.8	48	6.3	49	5.4	41	5.6	35	5.0	55	4.9	55					
Migrant																														
			Yes	96	3593	62	65	34	35	15	16	0	0	3.8	48	6.0	46	5.8	44	5.5	34	4.8	53	5.0	55					
			No	16832	3790	8546	51	8286	49	5395	32	887	5	4.4	55	7.4	57	6.8	52	6.6	41	5.4	60	5.7	64					
			No Information Provided	94	3612	64	68	30	32	22	2	2	2	3.8	47	6.4	49	5.5	43	5.4	34	4.9	55	4.9	54					
Limited English Proficient																														
			Current LEP	4346	3507	3337	77	1009	23	430	10	21	0	3.5	44	5.6	43	5.3	41	4.8	30	4.4	49	4.6	51					
			Non-LEP (Monitored 1st Year)	80	3683	44	55	36	45	18	23	4	5	4.1	51	6.7	51	6.4	49	6.1	38	5.2	58	5.1	56					
			Non-LEP (Monitored 2nd Year)	175	3888	65	37	110	63	61	35	4	2	4.9	61	8.0	62	7.4	57	7.4	46	5.9	65	6.3	69					
			Non-LEP (Monitored 3rd Year)	192	4077	37	19	155	81	121	63	11	6	5.3	66	9.2	71	8.5	65	8.6	54	6.4	71	7.0	78					
			Non-LEP (Monitored 4th Year)	447	4044	84	19	363	81	233	52	32	7	5.2	65	8.9	68	8.4	64	8.3	52	6.3	70	6.8	76					
			Non-LEP (Post Monitoring)	508	4095	95	19	413	81	288	57	48	9	5.4	67	9.2	71	8.6	66	8.5	53	6.5	72	7.0	78					
			Other Non-LEP	11183	3868	4946	44	6237	56	4263	38	767	7	4.6	58	7.9	61	7.2	55	7.1	44	5.6	63	6.0	67					
			No Information Provided	91	3608	64	70	27	30	18	20	2	2	3.7	46	6.3	49	5.5	43	5.5	34	5.0	56	4.8	54					
Bilingual																														
			Participants	39	3806	19	49	20	51	14	36	2	5	4.3	53	7.8	60	7.1	54	6.7	42	5.1	57	5.5	61					
			Nonparticipants	16885	3789	8582	51	8303	49	5399	32	885	5	4.4	55	7.4	57	6.8	52	6.6	41	5.4	60	5.7	64					
			No Information Provided	98	3583	71	72	27	28	19	19	2	2	3.8	47	6.1	47	5.3	41	5.4	34	4.8	54	4.7	52					
ESL																														
			Participants	3954	3508	3033	77	921	23	396	10	19	0	3.5	44	5.6	43	5.3	41	4.8	30	4.4	49	4.6	52					
			Nonparticipants	12971	3874	5569	43	7402	57	5017	39	868	7	4.7	58	7.9	61	7.3	56	7.1	45	5.7	63	6.1	67					
			No Information Provided	97	3598	70	72	27	28	19	20	2	2	3.7	47	6.3	48	5.4	42	5.5	35	4.9	55	4.8	53					
Special Education																														
			Yes	1852	3447	1507	81	345	19	151	8	5	0	3.3	42	5.5	42	5.0	38	4.2	26	4.3	47	4.3	48					
			No	15085	3831	7103	47	7982	53	5265	35	882	6	4.5	57	7.6	59	7.0	54	6.9	43	5.5	61	5.9	66					
			No Information Provided	85	3592	62	73	23	27	16	19	2	2	3.6	45	6.1	47	5.4	41	5.5	34	4.9	55	4.7	53					
Gifted/Talented																														
			Participants	1196	4482	98	8	1098	92	1024	86	409	34	6.3	78	10.6	82	10.4	80	10.6	66	7.2	80	7.9	87					
			Nonparticipants	15745	3736	8516	54	7229	46	4391	28	478	3	4.3	53	7.1	55	6.5	50	6.3	39	5.2	58	5.6	62					
			No Information Provided	81	3581	58	72	23	28	17	21	2	2	3.6	46	6.2	48	5.4	41	5.3	33	4.8	53	4.7	53					
At-Risk																														
			Yes	12195	3637	7668	63	4527	37	2278	19	100	1	4.0	50	6.5	50	6.0	46	5.7	35	4.9	55	5.2	58					
			No	4753	4178	952	20	3801	80	3138	66	787	17	5.5	69	9.5	73	8.9	68	9.0	56	6.5	72	7.1	79					
			No Information Provided	74	3597	52	70	22	30	16	22	2	3	3.7	46	6.2	48	5.4	42	5.4	34	4.9	54	4.9	55					

* Results for students who took the test with the Braille, American Sign Language videos accommodation, or the paper STAAR with embedded supports are not included in the reporting category results.



STATE OF TEXAS ASSESSMENTS OF ACADEMIC READINESS
Constructed Responses Summary Report
ENGLISH I
First-Time Tested Students

STATEWIDE

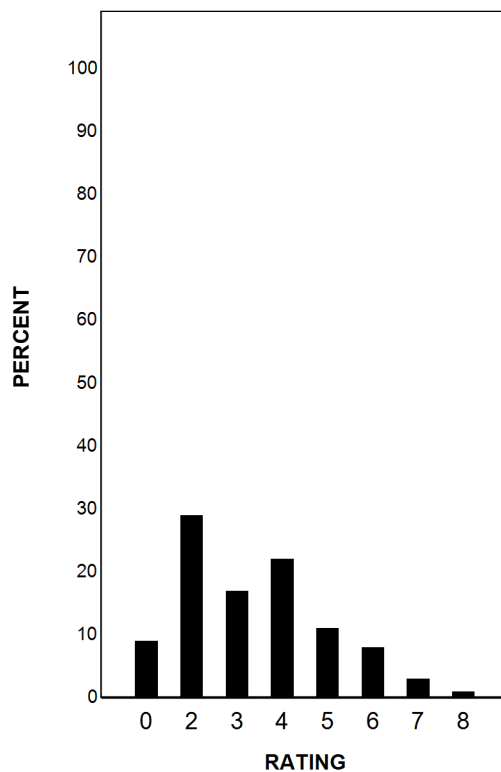
Report Date: FALL 2020
 Date of Testing: FALL 2020

--- = No Data Reported For Fewer Than Five Students

Written Composition Rating Summary*

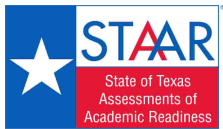
Expository Composition

Rating	#	%
0	1578	9
2	4862	29
3	2858	17
4	3756	22
5	1912	11
6	1372	8
7	476	3
8	198	1
Total	17012	100



Each composition has been scored independently by two readers. The written composition rating of 0-8 represents the summation of these scores.

* Results for students who took the test with the Braille, American Sign Language videos accommodation, or the paper STAAR with embedded supports are not included in this report.



STATE OF TEXAS ASSESSMENTS OF ACADEMIC READINESS

Summary Report

ENGLISH I

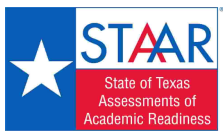
Retested Students

STATEWIDE

Report Date: FALL 2020
Date of Testing: FALL 2020

Administration Summary			Number of Students Tested	Average Scale Score	Did Not Meet		Approaches		Meets		Masters		Results for Each Reporting Category*													
													1	2	3	4	5	6								
Number	Percent											Number of Points Possible						Number of Points Scored								
					#	%	#	%	#	%	#	%	#	%	#	%	#	%	#	%	#	%	#	%		
Students Tested	41500	68											3.8	48	5.8	45	5.3	41	5.9	37	4.6	51	4.8	54		
Students Not Tested																										
Absent	6684	11																								
Other	12488	21																								
Total Documents Submitted	60672	100																								
Legend			--- = No Data Reported For Fewer Than Five Students																							
All Students			41500	3571	31374	76	10126	24	2381	6	2	0	3.8	48	5.8	45	5.3	41	5.9	37	4.6	51	4.8	54		
Male			26729	3563	20223	76	6506	24	1565	6	2	0	3.8	47	5.7	44	5.3	41	5.8	36	4.6	51	4.8	53		
Female			14771	3585	11151	75	3620	25	816	6	0	0	3.9	49	5.9	45	5.3	40	6.2	39	4.5	50	4.9	54		
No Information Provided			0	---	---	---	---	---	---	---	---	---	---	---	---	---	---	---	---	---	---	---	---	---		
Hispanic/Latino			27309	3563	21005	77	6304	23	1426	5	1	0	3.8	48	5.7	44	5.3	41	5.9	37	4.6	51	4.8	53		
American Indian or Alaska Native			118	3565	90	76	28	24	5	4	0	0	3.8	48	5.7	44	5.0	39	6.2	39	4.6	51	5.1	57		
Asian			618	3574	460	74	158	26	35	6	1	0	4.0	49	5.6	43	5.3	40	5.9	37	4.4	49	5.1	56		
Black or African American			7582	3566	5766	76	1816	24	384	5	0	0	3.9	48	5.8	45	5.2	40	5.8	36	4.7	52	4.9	55		
Native Hawaiian or Other Pacific Islander			63	3566	49	78	14	22	5	8	0	0	4.1	51	5.1	39	5.0	38	6.1	38	4.6	51	5.1	57		
White			5239	3617	3593	69	1646	31	495	9	0	0	3.9	49	6.2	48	5.5	42	6.3	40	4.7	53	5.1	56		
Two or More Races			514	3588	367	71	147	29	27	5	0	0	3.8	48	6.0	46	5.4	42	6.1	38	4.6	51	5.0	56		
No Information Provided			57	3570	44	77	13	23	4	7	0	0	3.7	47	5.7	44	5.8	45	5.6	35	4.5	51	5.0	55		
Economically Disadvantaged	Yes		30819	3563	23676	77	7143	23	1582	5	0	0	3.8	48	5.7	44	5.2	40	5.9	37	4.6	51	4.8	53		
	No		10626	3595	7659	72	2967	28	795	7	2	0	3.9	49	6.0	46	5.4	42	6.1	38	4.7	52	5.0	55		
	No Information Provided		55	3573	39	71	16	29	4	7	0	0	3.7	47	6.0	46	5.6	43	5.3	33	4.8	53	4.9	55		
Title I, Part A	Participants		23474	3557	18248	78	5226	22	1159	5	1	0	3.8	47	5.7	44	5.2	40	5.9	37	4.5	50	4.8	53		
	Nonparticipants		17959	3590	13076	73	4883	27	1214	7	1	0	3.9	49	6.0	46	5.4	42	6.0	38	4.7	52	4.9	55		
	No Information Provided		67	3561	50	75	17	25	8	12	0	0	3.8	47	5.8	45	5.5	42	5.6	35	4.6	51	4.6	51		
Migrant	Yes		292	3532	235	80	57	20	5	2	0	0	3.8	47	5.4	41	4.9	38	5.8	36	4.5	50	4.7	52		
	No		41128	3571	31079	76	10049	24	2367	6	2	0	3.8	48	5.8	45	5.3	41	5.9	37	4.6	51	4.8	54		
	No Information Provided		80	3558	60	75	20	25	9	11	0	0	3.9	48	5.8	44	5.4	41	5.6	35	4.6	52	4.5	50		
Limited English Proficient	Current LEP		14904	3526	12201	82	2703	18	526	4	0	0	3.7	46	5.4	41	5.1	39	5.6	35	4.3	48	4.6	51		
	Non-LEP (Monitored 1st Year)		258	3591	191	74	67	26	15	6	0	0	3.9	49	6.0	46	5.4	42	6.2	39	4.7	52	4.8	53		
	Non-LEP (Monitored 2nd Year)		162	3704	90	56	72	44	17	10	0	0	4.2	53	6.6	51	5.7	44	7.2	45	5.2	58	5.6	62		
	Non-LEP (Monitored 3rd Year)		249	3693	146	59	103	41	25	10	0	0	4.3	54	6.6	51	6.0	46	6.7	42	5.2	58	5.3	59		
	Non-LEP (Monitored 4th Year)		331	3689	194	59	137	41	36	11	0	0	4.1	52	6.5	50	6.1	47	6.9	43	5.1	56	5.5	61		
	Non-LEP (Post Monitoring)		214	3723	116	54	98	46	27	13	0	0	4.3	54	7.0	53	6.2	48	6.9	43	5.2	58	5.6	62		
	Other Non-LEP		25295	3592	18368	73	6927	27	1728	7	2	0	3.9	49	6.0	46	5.4	41	6.1	38	4.7	52	4.9	55		
	No Information Provided		87	3509	68	78	19	22	7	8	0	0	3.5	44	5.5	42	5.3	40	5.2	33	4.4	49	4.4	49		
Bilingual	Participants		67	3660	41	61	26	39	5	7	0	0	4.3	53	6.7	51	5.8	44	6.5	41	4.9	55	4.9	54		
	Nonparticipants		41331	3571	31255	76	10076	24	2368	6	2	0	3.8	48	5.8	45	5.3	41	5.9	37	4.6	51	4.8	54		
	No Information Provided		102	3531	78	76	24	24	8	8	0	0	3.6	46	5.6	43	5.4	42	5.2	32	4.4	49	4.6	52		
ESL	Participants		14324	3522	11766	82	2558	18	492	3	0	0	3.7	46	5.4	41	5.1	39	5.6	35	4.3	48	4.6	51		
	Nonparticipants		27076	3597	19532	72	7544	28	1881	7	2	0	3.9	49	6.0	46	5.4	42	6.1	38	4.7	53	5.0	55		
	No Information Provided		100	3530	76	76	24	24	8	8	0	0	3.6	45	5.6	43	5.5	42	5.2	32	4.4	49	4.6	52		
Special Education	Yes		5881	3474	5044	86	837	14	156	3	0	0	3.5	44	5.3	41	4.8	37	5.0	31	4.2	47	4.3	47		
	No		35545	3587	26276	74	9269	26	2217	6	2	0	3.9	49	5.9	45	5.3	41	6.1	38	4.7	52	4.9	55		
	No Information Provided		74	3569	54	73	20	27	8	11	0	0	3.9	48	5.9	46	5.5	42	5.5	34	4.7	52	4.7	52		
Gifted/Talented	Participants		147	3645	88	60	59	40	9	6	1	1	4.0	51	6.3	49	5.6	43	6.3	39	4.9	54	5.3	59		
	Nonparticipants		41282	3571	31233	76	10049	24	2364	6	1	0	3.8	48	5.8	45	5.3	41	5.9	37	4.6	51	4.8	54		
	No Information Provided		71	3563	53	75	18	25	8	11	0	0	3.9	48	5.9	45	5.5	42	5.5	35	4.6	51	4.6	51		
At-Risk	Yes		38006	3568	28905	76	9101	24	2101	6	1	0	3.8	48	5.8	44	5.3	40	5.9	37	4.6	51	4.8	54		
	No		3410	3608	2404	70	1006	30	272	8	1	0	3.9	49	6.1	47	5.5	42	6.2	39	4.7	53	5.1	56		
	No Information Provided		84	3512	65	77	19	23	8	10	0	0	3.6	45	5.4	42	5.4	41	5.3	33	4.2	47	4.4	49		

* Results for students who took the test with the Braille, American Sign Language videos accommodation, or the paper STAAR with embedded supports are not included in the reporting category results.



STATE OF TEXAS ASSESSMENTS OF ACADEMIC READINESS
Constructed Responses Summary Report
ENGLISH I
Retested Students

STATEWIDE

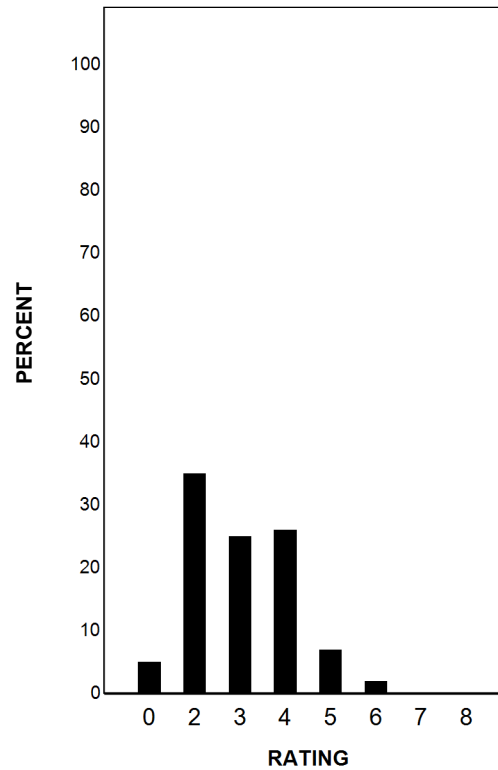
Report Date: FALL 2020
 Date of Testing: FALL 2020

--- = No Data Reported For Fewer Than Five Students

Written Composition Rating Summary*

Expository Composition

Rating	#	%
0	2196	5
2	14297	35
3	10310	25
4	10713	26
5	2958	7
6	887	2
7	69	0
8	9	0
Total	41439	100



Each composition has been scored independently by two readers. The written composition rating of 0-8 represents the summation of these scores.

* Results for students who took the test with the Braille, American Sign Language videos accommodation, or the paper STAAR with embedded supports are not included in this report.