

# Sub-Baccalaureate Career Pathways

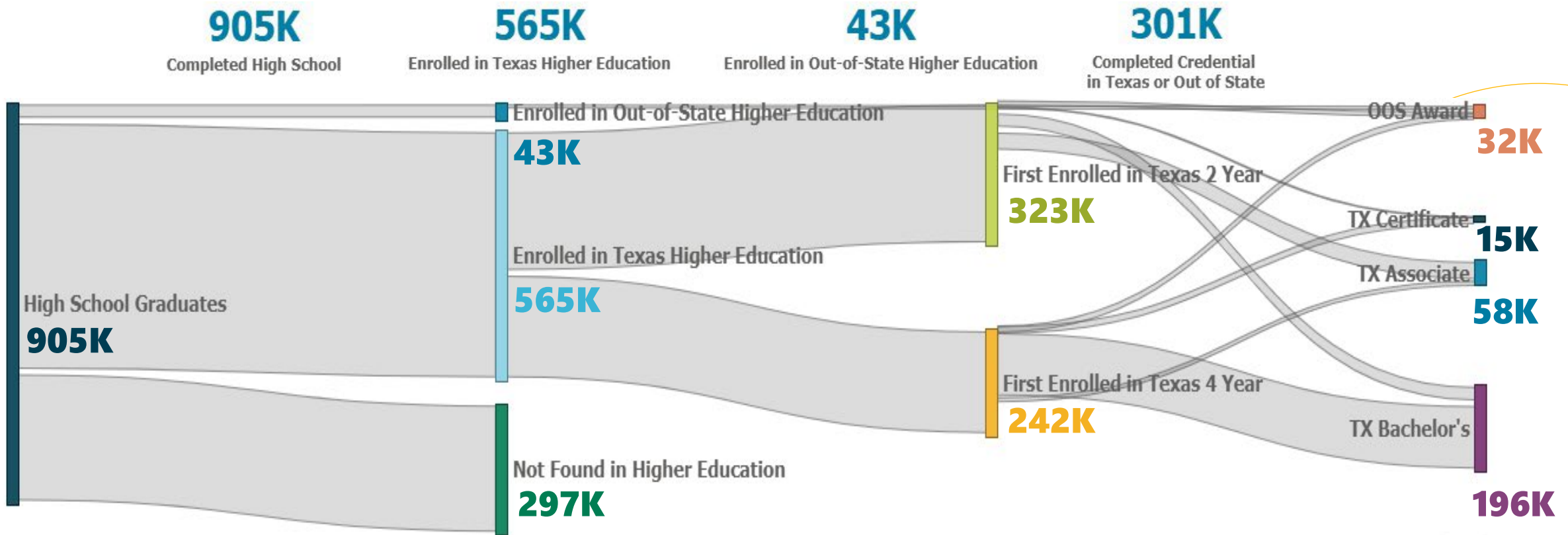
Wynn Rosser, PhD

Commissioner of Higher Education

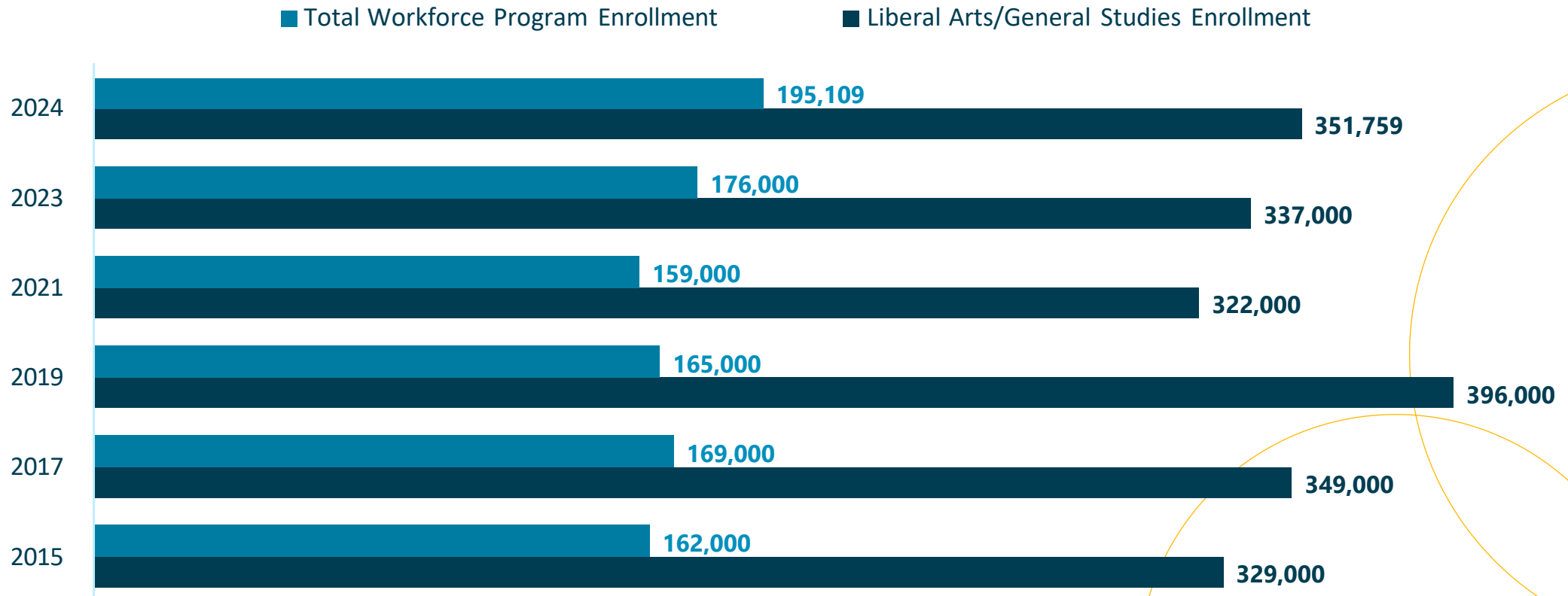
CEO, Texas Higher Education Coordinating Board

# Students Lost Along the Path to Completion

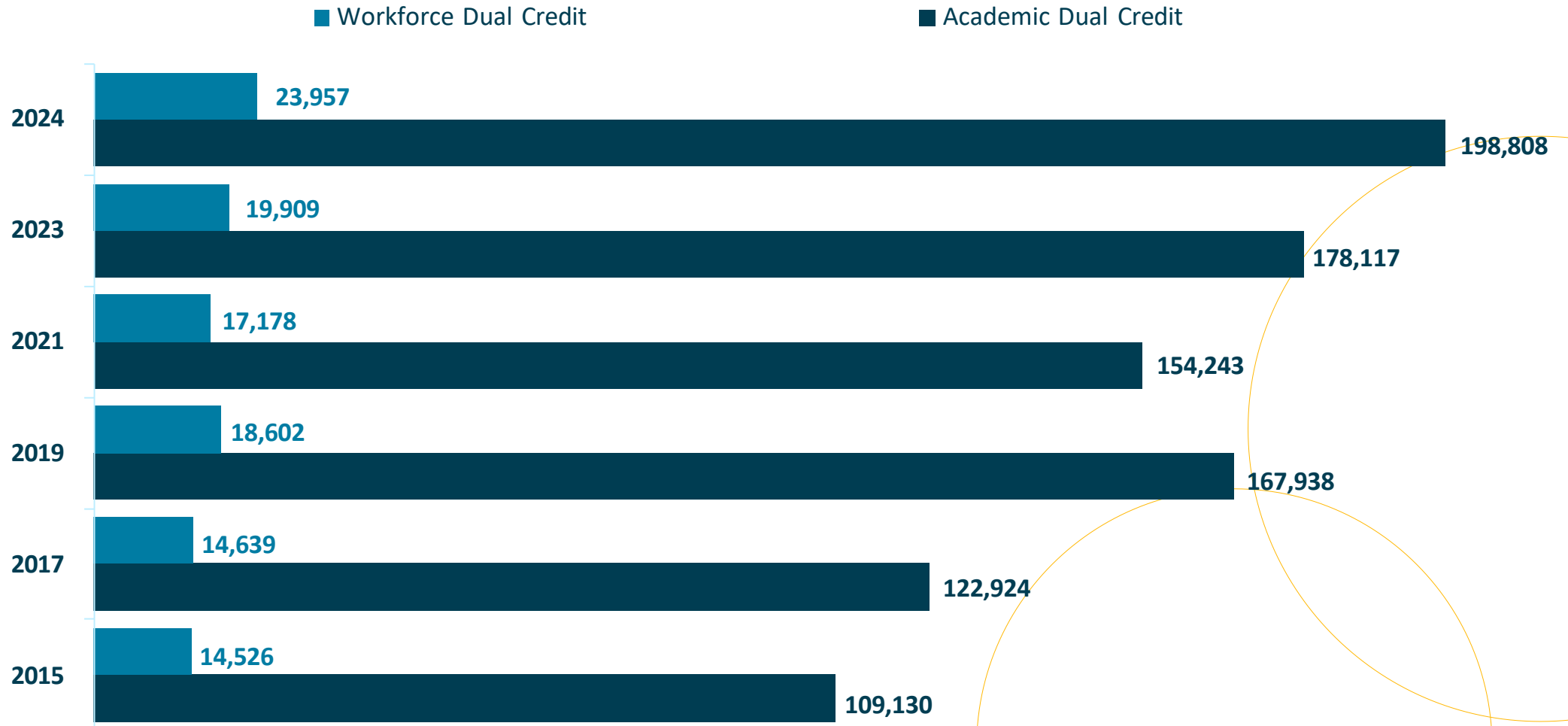
Flow of Texas Public High School Graduates into Higher Education Statewide (3-Year Combined Cohort)



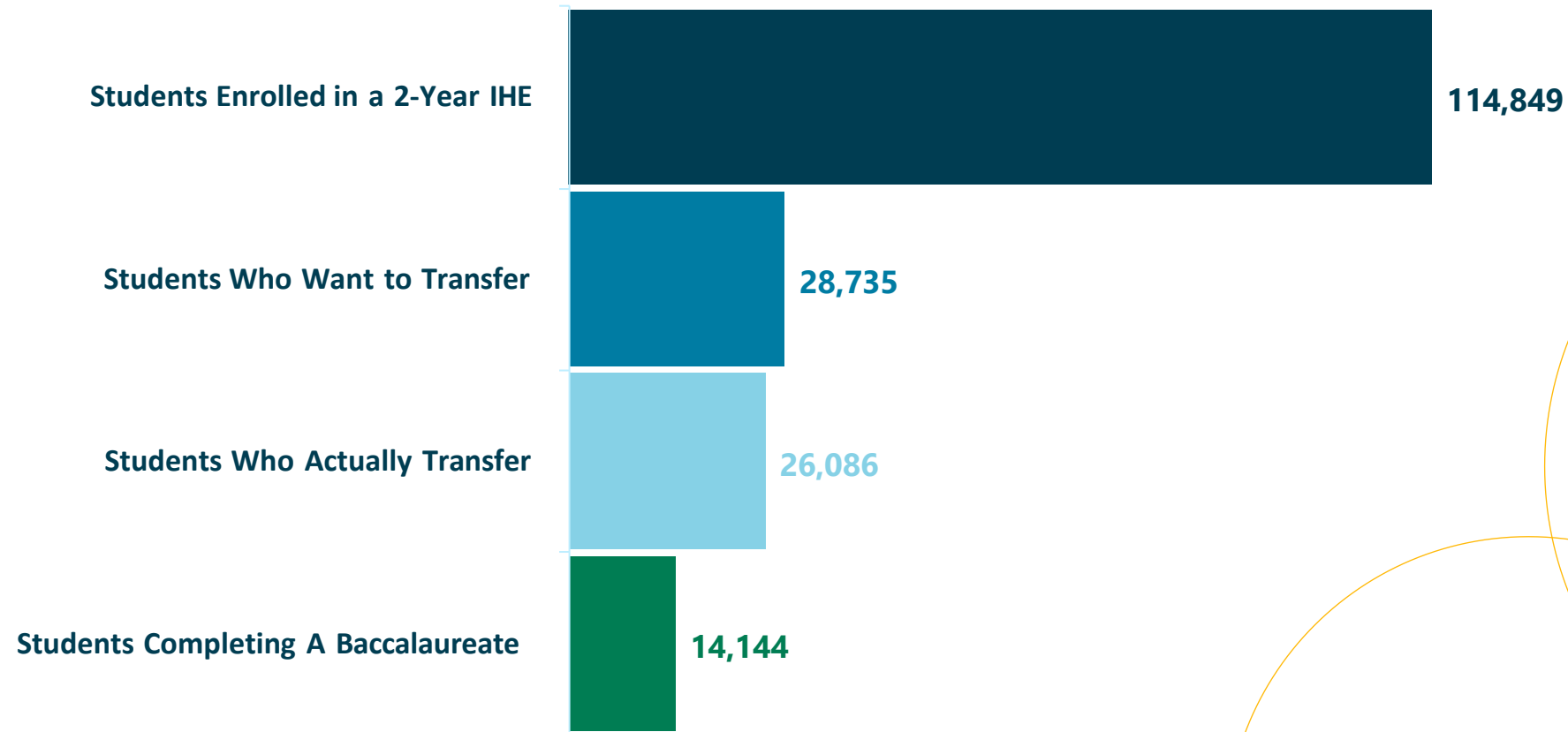
# Workforce Enrollment Historically Trails Other Pathways



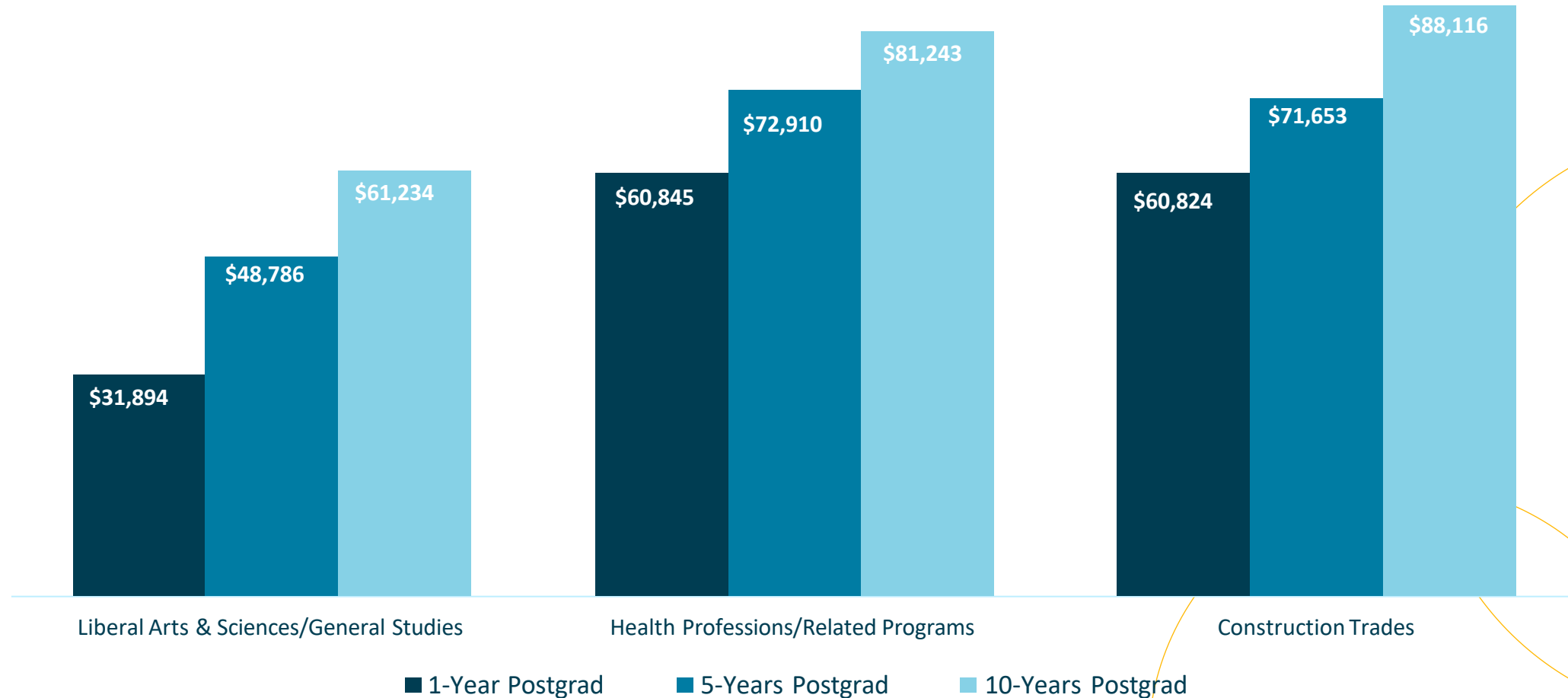
# Through Rapid Academic Dual Credit Growth, Workforce Dual Enrollment Trails



# From 2-Year to 4-Year: Enrollment to Graduation

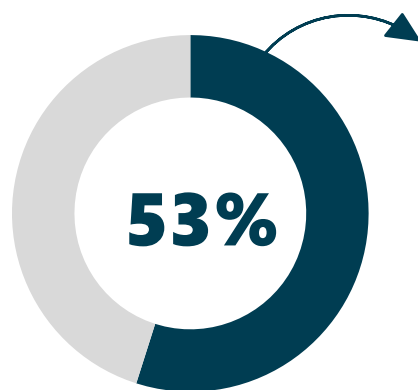


# Texas Higher Education: Associate Degree Earnings Over Time



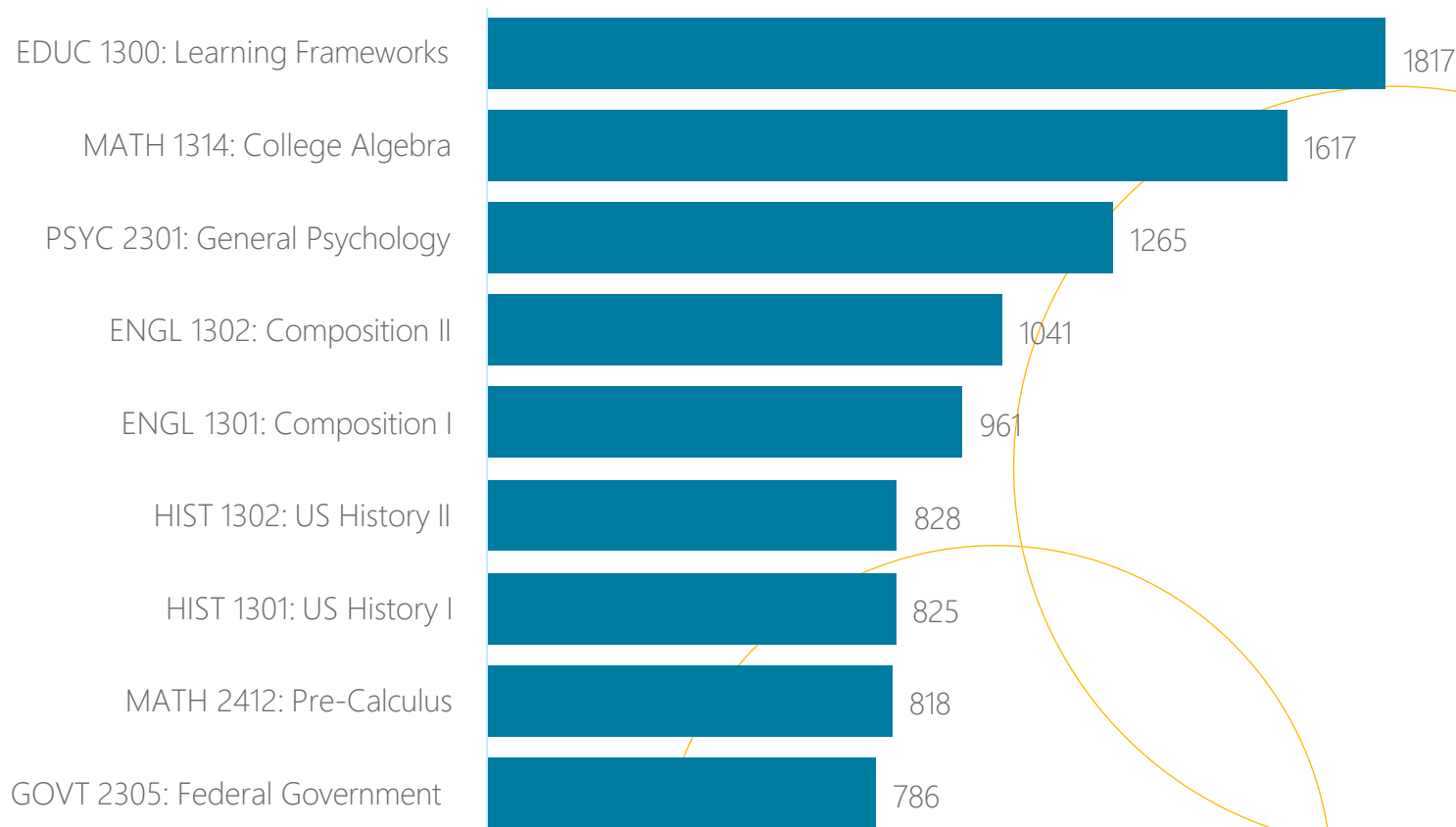
# A Closer Look: Courses Denied Transfer

## Top Reason for Transfer Course Denials



Of all transfer courses were denied because they were outside degree requirements

## Top Courses Denied Transfer: Outside Degree Requirement



## Top Degree Areas with Courses Denied Transfer Due to Degree Requirements

- Engineering & Engineering Technologies
- Physical & Natural Sciences
- Computer Science & IT
- Health Professions & Nursing
- Fine & Performing Arts

# You Go to College for That: Increasing Awareness of High-Demand Credentials



## Skilled Trades & Construction

- Electricians
- Plumbers & Pipefitters
- HVAC Technicians
- Welders
- Heavy Equipment Operators



## Healthcare Support

- Licensed Vocational Nurses (LVNs)
- Medical Technicians
- Certified Nursing Assistants
- Home Health Aides



## Advanced Manufacturing

- Industry Maintenance Technicians
- Quality Control Inspectors
- Mechatronics Specialists



## Information Technology

- IT Support Specialists
- Network Technicians
- Cybersecurity Analysts



## Transportation & Logistics

- Commercial Truck Drivers (CDL)
- Diesel Mechanics
- Warehouse & Supply Chain Coordinators

# High Demand Bachelor's Degrees: Meeting Statewide Workforce Needs

The Performance-Based Funding Committee is working to strengthen alignment between four-year degree outcomes and workforce needs by focusing incentives on high-demand credentials of value in areas such as:



## Computer Information

- Software Engineering
- Developer
- Systems Analyst



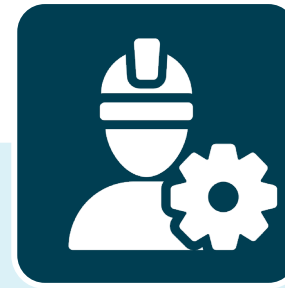
## Nursing & Healthcare

- Registered Nurse
- Healthcare Admin
- Service Manager



## Data Science & Statistics

- Data Analyst
- Data Scientist
- Business Analyst



## Engineering

- Petroleum Engineer
- Mechanical Engineer
- Electrical Engineer



## Education

- K-12 Teacher
- Instructional Specialist
- Education Administrator

# Additional Resources



Find insightful and  
interactive data.

THECB

DataBridge

Access to action.

GET HIGHER ED INSIGHTS →

## Your Source for Texas Higher Education Data

The primary source for data, statistics, and information on higher education in the state.

To search, type and hit enter.



#### POPULAR SEARCHES

[8th Grade Cohort](#)

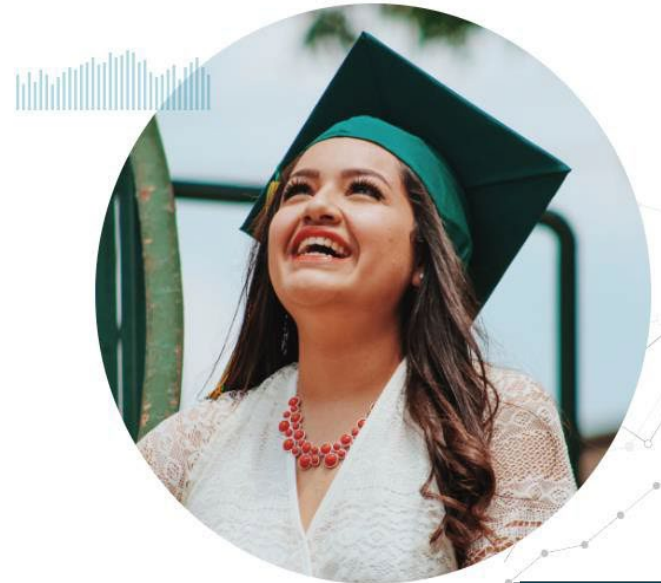
[Transfers](#)

[Credentials of Value](#)

[Student Debt](#)

[Enrollment](#)

[Degrees and Certificates](#)



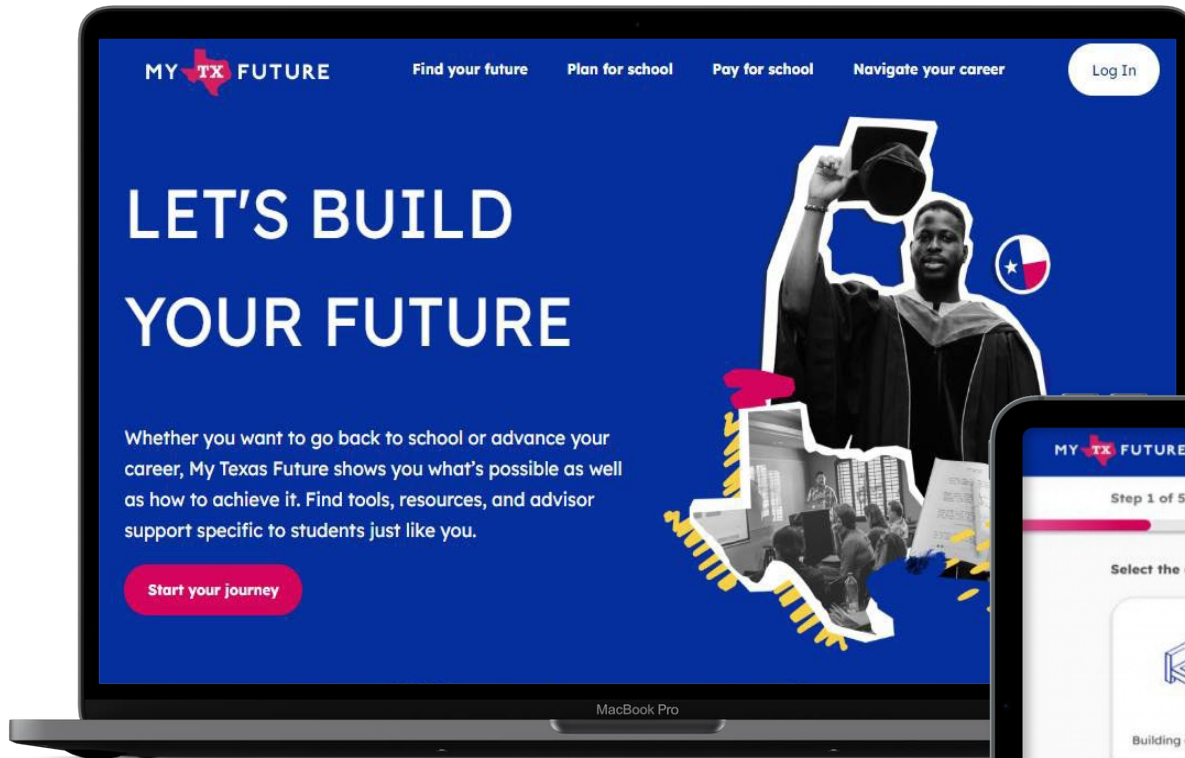
# PSEO Explorer Tool:

## Earnings, Outcomes, & Employment Flows

The **PSEO Explorer Tool** is a publicly available data product from the U.S. Census Bureau containing **earnings outcomes** and **employment flows** for recent graduates of partner colleges and universities.

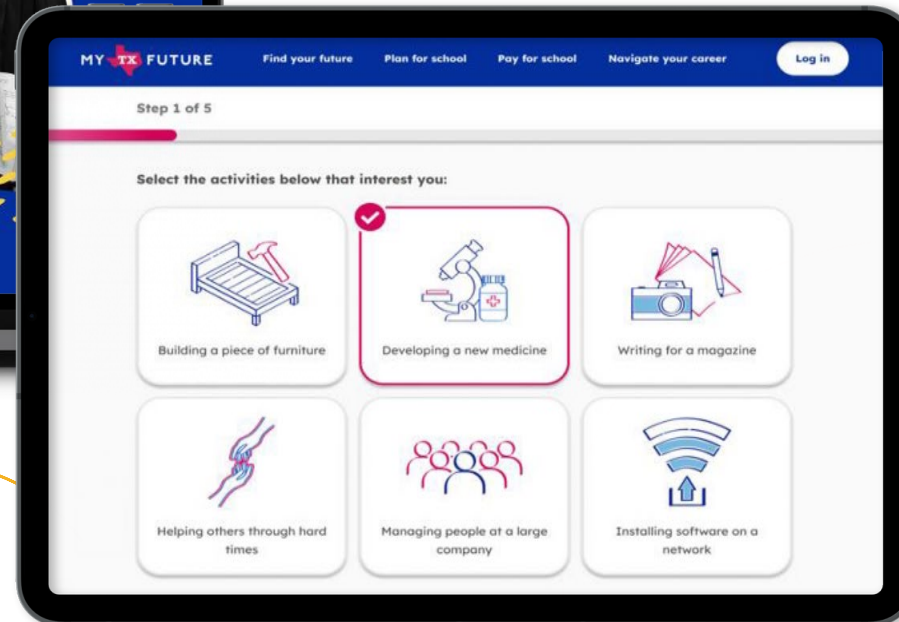


# My Texas Future 2.0: Connecting Learners to Higher Ed



My Texas Future serves as a one-stop college and career navigation tool for all Texans

My Texas Future streamlines the college and career navigation process for learners





# **Texas Higher Education**

## **COORDINATING BOARD**