



Overview of Supports and Services

Learning Acceleration Support Opportunities (LASO)



Learning Acceleration Support Opportunities (LASO) is a **single, consolidated application that combines grants, allotments, and in-kind supports**, bundled around a few key strategies to accelerate academic gains. LASO Cycle 4 will offer 15 opportunities focused on curriculum & instruction, educator training, more time, and innovative school models.

\$500M

in estimated services
and supports

15

initiatives to support
learning acceleration
and innovation

1

application to access
funding

LASO 4 Portfolio



Initiative	District or Campus Level	Estimated Total Allocation Available	Initiative Duration In Years	Estimated Range of Award	Estimated Number of Awards
Curriculum & Instruction					
Leadership & Instructional Foundations for Texas (LIFT) LIFT merges programs formerly known as Strong Foundations- SF, Texas Instructional Leadership- TIL, and Texas Lesson Study- TXLS	District	\$248M	3	\$200K-1.5M	350-475
LIFT Add-On: School Improvement PLC Support (LIFT SI PLC) <i>(available only for Title I Comprehensive, Targeted, and Addtl Targeted)</i>	Campus	\$45M	1	\$150K-300K	150-300
School Improvement Curriculum and Instruction Support Grant (SI CISG) <i>(available only for Title I Comprehensive, Targeted, and Addtl Targeted)</i>	Campus	\$10M	1	Up to \$200K	Up to 50
Blended Learning Grant (BLG) Two Cohorts: Academic – Math or RLA cohort <i>and</i> Strategic Operations Cohort	District	\$6M	2-3	Academic- Up to \$180K Strat Ops- Up to \$310K	15-20
AP Computer Science Principles (APCSP)	District	\$1M	1	\$20K- 100K	Up to 50
Education and Training					
PREP Program Allotment 1. PREP Residency Program 2. PREP Grow Your Own (GYO) Program 3. PREP Mentor Program	District	\$146M	1	Residency Program: \$24K-1.6M Grow Your Own: \$8K-480K Mentor Program: \$3K-120K	All eligible districts may receive the allotment
Texas Strategic Staffing for Residencies (TSS) Implementation Support Grants	District	\$2.9M	1	Up to \$58.4K	Up to 50
More Time					
Additional Days School Year (ADSY) Launch Grants Two Cohorts: Full Year Redesign <i>and</i> Summer Learning	District	\$7.5M	2-3	Summer- Up to \$200K Full Year- Up to \$600K	30-36
Innovative School Models - Launch Grants					
School Action Fund (SAF)	Campus	\$30M	2-3	\$150K-300K	27-30
Navigating Excellence through Targeted Supports (NEXT)	Campus	\$1.75M	1	Up to \$150K	Up to 5
Early College High School (ECHS)	Campus	\$800K	1	Up to \$100K	Up to 8
Pathways in Technology Early College High School (PTECH)	Campus	\$1M	1	Up to \$100K	Up to 10
Virtual Hybrid Program Accelerator (VHPA)	District	\$5M	2	Up to \$230K	10-14

LASO 4 Roadmap



September

General Webinar

9/16 or 9/17 | Overview of LASO 4 portfolio of grants and allotments

October

LASO Application Open | 10/1 – 12/1

Initiative-Specific Webinars

10/6 – 10/25 | Learn more details about each grant and allotment opportunity in LASO

Office- Hours

10/27 – 11/7 | 1-1 application support

November

December

Scoring Window

Dec – Jan | TEA conducts scoring and interviews

January

February

Award Announcement

Early Feb | Post the list of awardees on the website and send award section notification

March

NOGA Window

Mar – May | Notice of Grant Agreements processed on first come, first served basis

Superintendent calls throughout the fall will provide updates on LASO 4 and include deep dives into included supports such as **LIFT**, the **PREP Allotment**, **ADSY Planning and Execution Program**, and the **Blended Learning Grant Program**

Visit the [LASO 4 webpage](#) for access to application resources, webinar links, and 1-1 supports.



LIFT builds on and combines three prior TEA supports:

- ✓ Strong Foundations
- ✓ Texas Instructional Leadership (TIL)
- ✓ Texas Lesson Study



LIFT Program Overview

What's Necessary for All Children to Learn?

High-quality instructional materials and **instructional leadership**.



Each link in the instructional delivery chain plays a crucial role in adopting HQIM



Teacher

Must...

- **Learn** about research based instructional strategies
- **Align** to the instructional vision
- **Engage** in initial HQIM training



Instructional
Leaders + Coaches

Must...

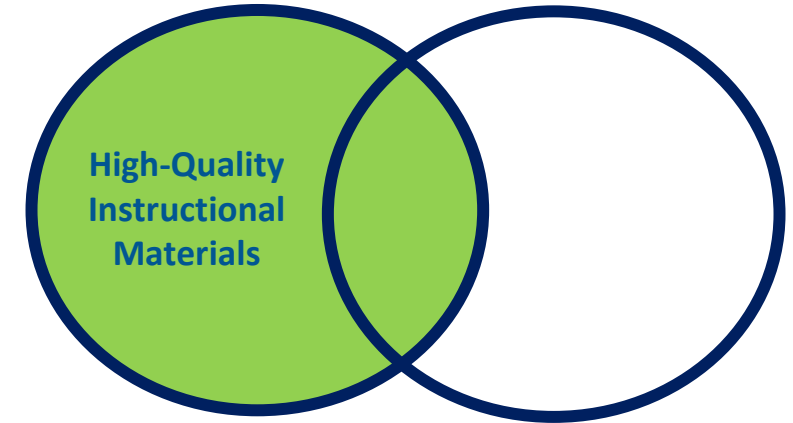
- **Learn** about research based instructional strategies
- **Support** building an instructional vision
- **Communicate** the instructional vision to teachers
- **Support** selection of HQIM
- **Ensure** school-wide operational alignment to HQIM implementation



Superintendent, Chief Academic Officers,
Principal Managers

Must...

- **Learn** about research based instructional strategies
- **Define** an instructional vision alongside key stakeholders
- **Lead** planning and change management strategy
- **Select and adopt** HQIM with board support
- **Ensure** district-wide operational alignment to HQIM implementation



Each link in the instructional delivery chain plays a crucial role in instructional leadership



Teacher

Must...

- **Internalize** and prepare for HQIM delivery
- **Deliver** HQIM as designed, differentiating effectively
- **Analyze student work** to address gaps
- **Execute** coaching action steps



Instructional
Leaders + Coaches

Must...

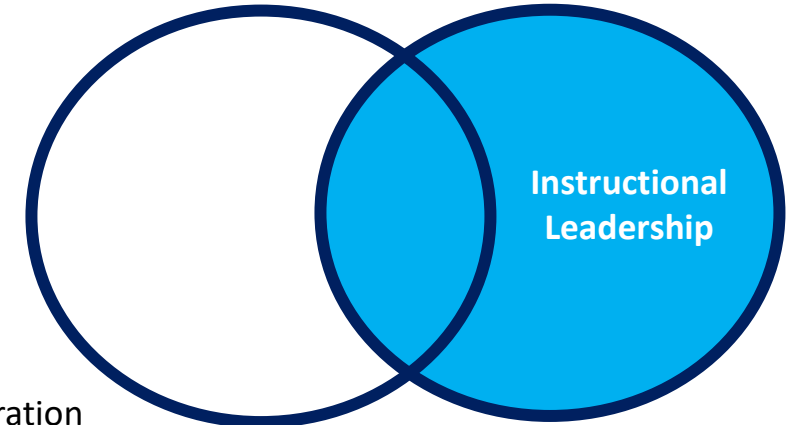
- **Internalize** HQIM and **facilitate teacher PLCs** to support preparation
- **Observe and coach** supported teachers frequently; spend **majority** of time on instructional leadership support activities
- **Follow up** with action steps, observations, modeling
- **Evaluate** teachers in alignment with strong HQIM delivery



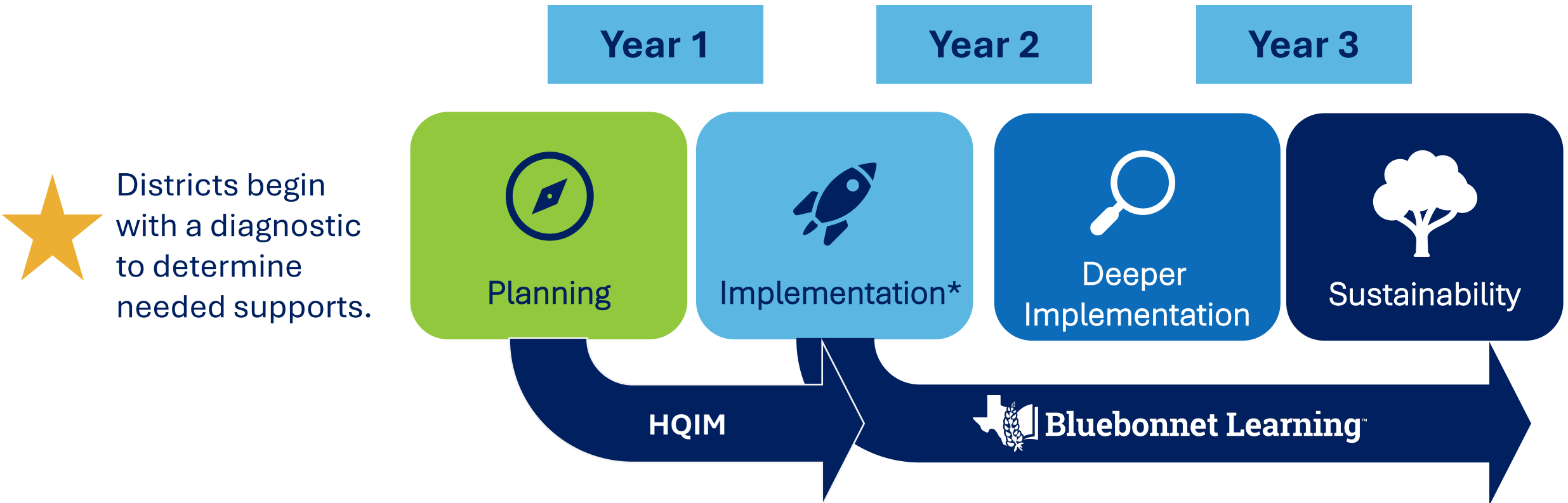
Superintendent, Chief Academic Officers,
Principal Managers

Must...

- **Observe, coach, calibrate** alongside instructional leaders to grow leaders' capacity for coaching
- **Performance manage** against observation, assessment data
- **Change manage, align systems** to support managed instruction



LIFT: A Comprehensive Set of Supports



LIFT is a three-year program that supports districts in moving from vision to sustainable implementation of HQIM through aligned supports and strong systems. LIFT customizes programming across three years based on where a district begins, and the level of support needed.

*Districts who choose Bluebonnet Learning receive ongoing implementation support.

Planning Supports

Districts focused on preparing for HQIM would engage in:

Planning & Change Management

Build a multi-year plan and change readiness, tailored for where you are as a district.

Research-Based Instructional Practices (RBIS)

Train leadership teams and staff on core instructional strategies grounded in cognitive science to build a shared understanding of effective teaching.

Instructional Framework & HQIM Adoption

Develop an instructional framework and select high-quality instructional materials.

Schoolwide Culture and Routines

Support in establishing consistent expectations and daily routines that support strong instruction and student engagement across all classrooms.

Operational Alignment

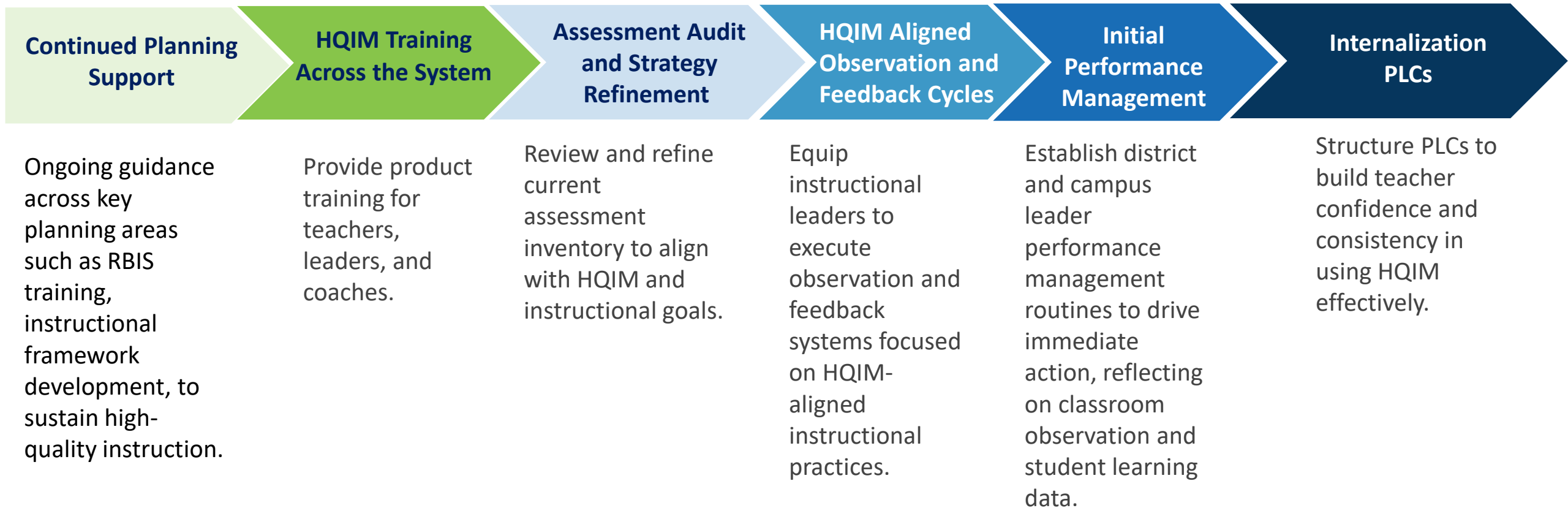
Align calendars, staffing, and PD to support strong implementation.

Foundational Observation & Feedback

Equip instructional leaders to launch early observation and feedback coaching systems to support teacher growth.

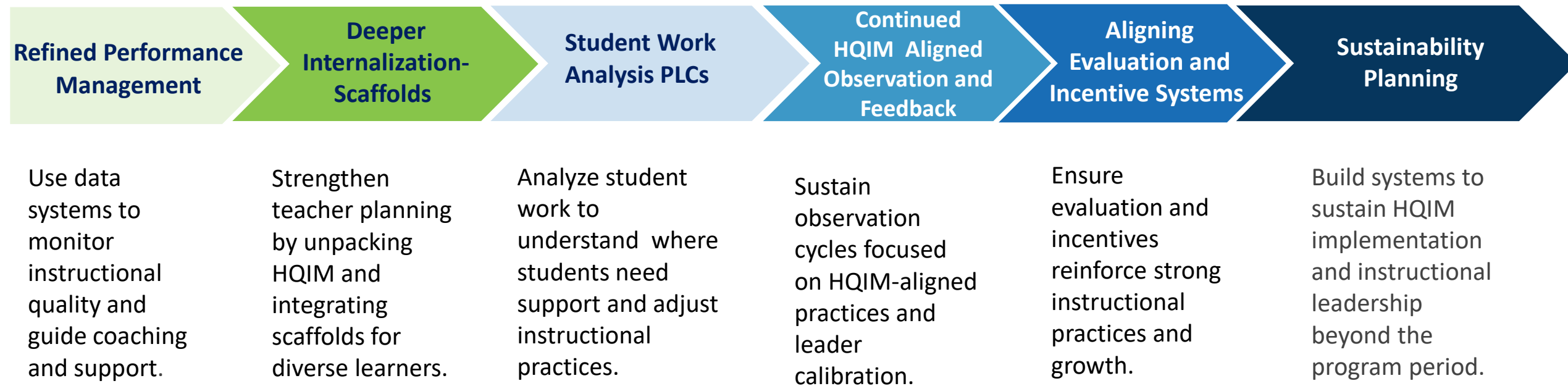
Initial Implementation Supports

Districts ready for initial implementation would focus on:



Deeper Implementation Supports

For a district that has already adopted and launched HQIM, deeper implementation supports include:



LIFT comes with multiple benefits



Leadership and Instructional
Foundations for Texas



**Monthly Coaching
Opportunities &
Support**



**High-Quality
Professional
Learning**



**Customized Technical
Assistance**



**Instructional Systems
Support**



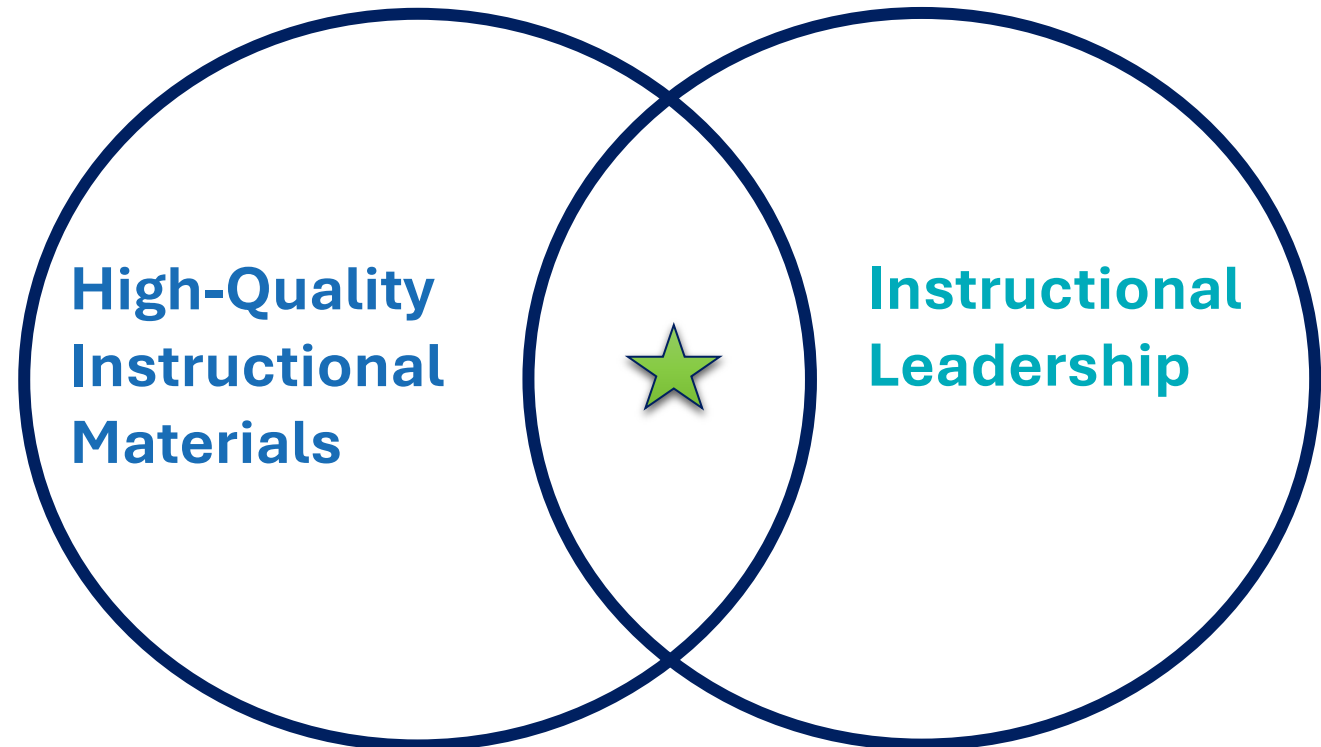
Flexible Sustained Funding

District Size	Year 1	Year 2	Year 3	3-Year Avg
Very Small	\$240k	\$410k	\$290k	\$360k
Small	\$290k	\$490k	\$340k	\$430k
Small Medium	\$350k	\$560k	\$390k	\$500k
Medium Large	\$610k	\$910k	\$640k	\$820k
Large	\$860k	\$1.260M	\$880k	\$1.130M
Very Large	\$1.210M	\$1.720M	\$1.200M	\$1.550M

What's Necessary for All Children to Learn?

LIFT is designed to help strengthen these key operational levers in school systems.

What are the results?



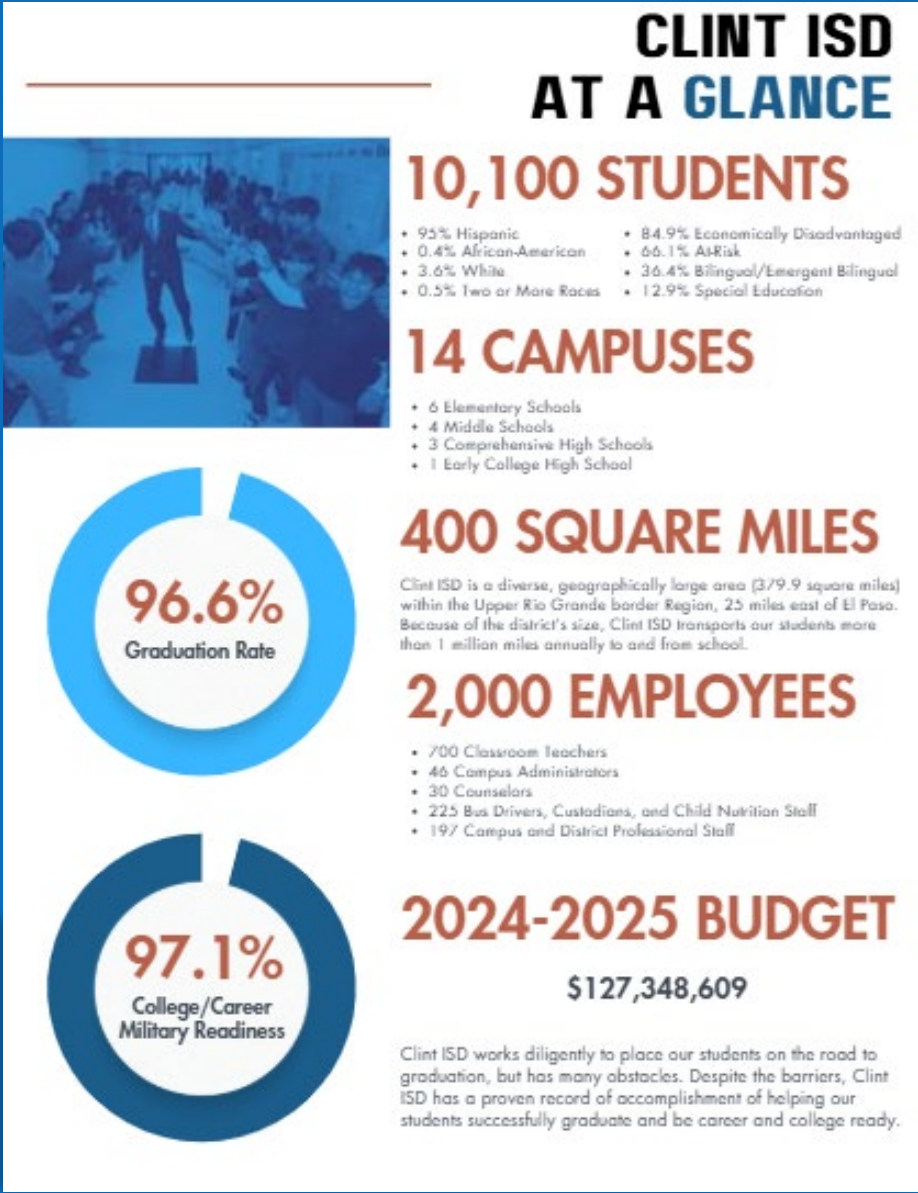
District Highlight | Clint ISD



Dr. Juan Martinez
Superintendent



James Littlejohn
Assistant Superintendent





Clint ISD and TEA Program Journey

Year	Program
2022-2023	Strong Foundations Planning (Literacy)
2023-2024	TIL (and TSL)
2024-2025	TIL (and TSL) Strong Foundations Planning (Math)
2025-2026	TIL (and TSL) Strong Foundation Implementation (K-5 & Secondary Math)

The LIFT program combines elements of Strong Foundations and Texas Instructional Leadership (TIL), and includes key planning components from the Texas Strategic Leadership (TSL) program.

Clint ISD's Growth Through Strong Foundations and TIL



The District **increased 1 letter grade!**
with **no "D" or "F" rated campuses**

Campus ratings improved:

2 campuses increased

3 Letter Grades

2 campuses increased

2 Letter Grades

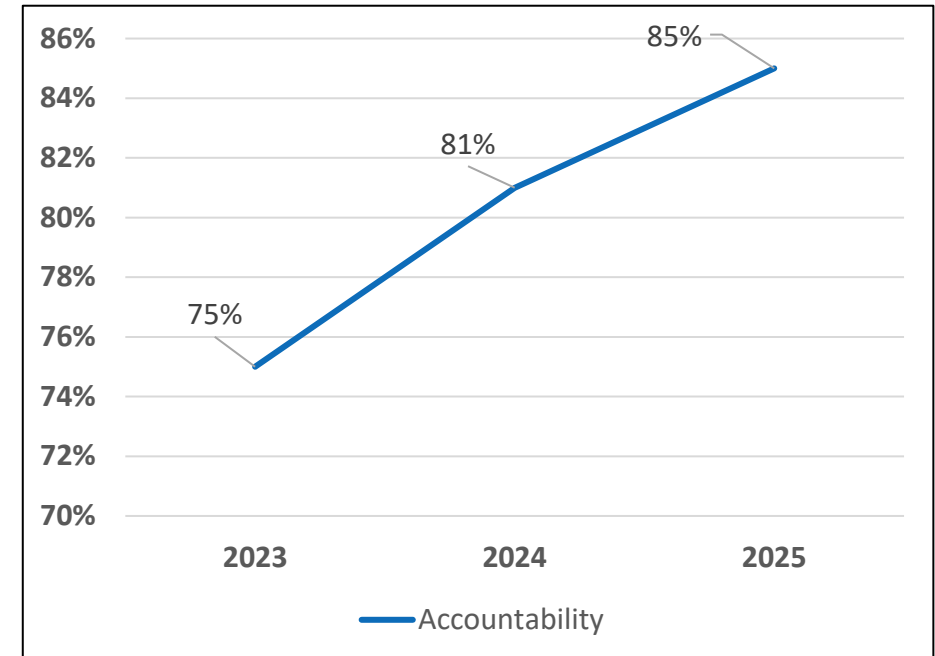
6 campuses increased

1 Letter Grade

**Closing the Gaps Domain
shows significant growth**

69 → 85

Overall District Accountability Scores Over Time



Clint ISD Embedded Supports

High Quality Instructional Materials

- Elementary Implementation of Eureka
- Secondary Implementation of Carnegie
- Lesson internalization
- Research-Based Instructional Strategies (RBIS)
- 2025-2026 Shift to Bluebonnet Learning K-5 Math, 6-8th Math and Algebra I

Instructional Leadership

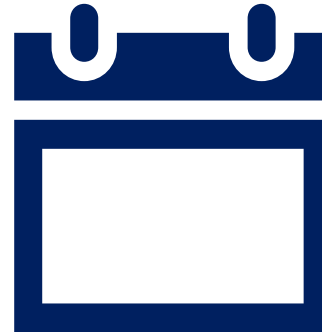
- Building leaders' capacity to grow teachers through consistent observation and feedback
- Strengthening teacher practice through consistent coaching
- Supports strategic staffing work through teacher leader pathways and increasing retention
- Refining Instructional Leadership practices through TSL work

Next Steps



General Webinars

Register for the [general webinar](#) to learn more about supports and services included in LASO 4
[September 16, 2025 | 9:30 -10:30 AM CT](#)
[September 17, 2025 | 3:00 - 4:00 PM CT](#)



Application Window
Opens: October 2025
Mark your calendars!



Apply at: tea.texas.gov/LASO
*Applications close **December 1!***