

STATE OF TEXAS ASSESSMENTS OF ACADEMIC READINESS

Summary Report

ENGLISH I

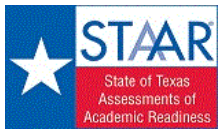
All Students

STATEWIDE

Report Date: SUMMER 2018
Date of Testing: SUMMER 2018

Administration Summary			Number of Students Tested	Average Scale Score	Results for Each Reporting Category*																									
					Number	Percent	1		2		3		4		5		6													
Students Tested	77960	98			Did Not Meet	Approaches	Meets	Masters	Understanding/ Analysis Across Genres	Understanding/ Analysis of Literary Texts	Understanding/ Analysis of Informational Texts	Composition	Revision	Editing	Number of Points Possible															
Students Not Tested															8		13		13		16		9		9					
Absent	0	0			Number of Points Scored																									
Other	1716	2			#	%	#	%	#	%	#	%	#	%	#	%	#	%	#	%										
Total Documents Submitted	79676	100																												
Legend																														
--- = No Data Reported For Fewer Than Five Students																														
All Students	77960	3587			55675	71	22285	29	7556	10	88	0	3.9	49	6.4	49	5.8	45	6.4	40	4.3	48	4.5	50						
Male	48729	3552	36412	75	12317	25	4005	8	22	0	3.8	47	6.2	48	5.6	43	6.1	38	4.3	48	4.3	48								
Female	29229	3645	19262	66	9967	34	3551	12	66	0	4.1	52	6.8	52	6.1	47	6.9	43	4.4	49	4.8	54								
No Information Provided	2	---	---	---	---	---	---	---	---	---	---	---	---	---	---	---	---	---	---	---	---	---								
Hispanic/Latino	49235	3575	35949	73	13286	27	4274	9	32	0	3.8	48	6.4	49	5.7	44	6.3	40	4.3	47	4.5	50								
American Indian or Alaska Native	259	3601	187	72	28	25	10	2	1	0	4.0	49	6.4	50	6.0	46	6.3	39	4.4	49	4.7	52								
Asian	1076	3607	733	68	343	32	126	12	4	0	3.9	49	6.5	50	5.9	45	6.4	40	4.5	50	4.7	52								
Black or African American	13752	3574	9939	72	3813	28	1213	9	3	0	4.0	50	6.3	48	5.8	44	6.3	40	4.2	47	4.5	50								
Native Hawaiian or Other Pacific Islander	124	3572	87	70	37	30	11	9	0	0	3.8	48	6.3	49	5.6	43	6.3	39	4.3	48	4.4	49								
White	12453	3641	8064	65	4389	35	1763	14	43	0	4.1	52	6.8	52	6.2	48	6.5	41	4.7	52	4.6	51								
Two or More Races	1003	3637	674	67	329	33	133	13	3	0	4.2	52	6.7	51	6.1	47	6.5	41	4.7	52	4.7	52								
No Information Provided	58	3564	42	72	16	28	11	19	1	2	3.8	47	6.3	48	5.7	44	5.1	32	4.7	52	4.6	52								
Economically Disadvantaged	Yes	58304	3567	43033	74	15271	26	4819	8	26	0	3.8	48	6.3	48	5.7	44	6.3	39	4.2	47	4.5	49							
	No	19587	3646	12595	64	6992	36	2724	14	59	0	4.2	52	6.8	53	6.2	48	6.7	42	4.6	51	4.7	52							
	No Information Provided	69	3643	47	68	22	32	13	3	4	3.8	47	6.9	53	6.3	48	5.3	33	5.0	56	4.9	55								
Title I, Part A	Participants	45255	3567	33302	74	11953	26	3844	8	30	0	3.8	48	6.3	48	5.7	43	6.3	39	4.3	47	4.5	50							
	Nonparticipants	32630	3614	22324	68	10306	32	3697	11	55	0	4.0	50	6.6	51	6.0	46	6.5	41	4.5	49	4.5	50							
	No Information Provided	75	3659	49	65	26	35	15	20	3	4	4.0	50	6.8	52	6.3	48	5.7	36	5.0	56	5.0	55							
Migrant	Yes	673	3549	511	76	162	24	53	8	0	0	3.8	47	6.1	47	5.4	42	6.1	38	4.2	47	4.5	50							
	No	77124	3587	55047	71	22077	29	7478	10	84	0	3.9	49	6.4	49	5.8	45	6.4	40	4.3	48	4.5	50							
	No Information Provided	163	3570	117	72	46	28	25	15	4	2	3.8	47	6.3	49	5.9	45	5.3	33	4.5	50	4.5	50							
Limited English Proficient	Current LEP	21407	3492	17794	83	3613	17	801	4	0	0	3.4	42	5.8	44	5.2	40	5.8	36	4.0	44	4.2	47							
	Non-LEP (Monitored 1st Year)	1923	3708	1102	57	821	43	284	15	1	0	4.3	54	7.2	56	6.6	51	7.2	45	4.8	53	5.1	57							
	Non-LEP (Monitored 2nd Year)	767	3721	411	54	356	46	126	16	0	0	4.3	54	7.2	55	6.7	51	7.2	45	4.9	54	5.2	58							
	Other Non-LEP	53780	3618	36314	68	17466	32	6330	12	84	0	4.1	51	6.6	51	6.0	46	6.6	41	4.5	49	4.6	51							
	No Information Provided	83	3639	54	65	29	35	15	18	3	4	4.0	50	6.8	52	6.3	48	5.4	34	4.9	54	4.9	55							
Bilingual	Participants	91	3696	50	55	41	45	17	19	0	0	4.2	53	7.3	56	6.8	52	7.2	45	4.4	49	4.8	54							
	Nonparticipants	77772	3587	55559	71	22213	29	7524	10	85	0	3.9	49	6.4	49	5.8	45	6.4	40	4.3	48	4.5	50							
	No Information Provided	97	3606	66	68	31	32	15	15	3	3	3.8	47	6.5	50	6.1	47	5.5	34	4.8	53	4.7	52							
ESL	Participants	20437	3490	17033	83	3404	17	751	4	0	0	3.4	42	5.8	44	5.1	40	5.8	36	4.0	44	4.2	47							
	Nonparticipants	57428	3621	38577	67	18851	33	6790	12	85	0	4.1	51	6.7	51	6.0	46	6.6	41	4.5	50	4.6	51							
	No Information Provided	95	3610	65	68	30	32	15	16	3	3	3.8	47	6.6	51	6.1	47	5.5	34	4.8	53	4.8	53							
Special Education	Yes	14895	3448	12870	86	2025	14	485	3	3	0	3.4	42	5.6	43	5.0	38	5.3	33	3.8	42	3.8	42							
	No	62990	3620	42754	68	20236	32	7057	11	82	0	4.0	50	6.6	51	6.0	46	6.6	41	4.5	50	4.7	52							
	No Information Provided	75	3649	51	68	24	32	14	19	3	4	3.9	48	6.7	52	6.3	48	5.4	34	5.1	56	5.1	56							
Gifted/Talented	Participants	449	3904	157	35	292	65	169	38	19	4	5.1	63	8.3	64	7.8	60	7.8	49	5.7	64	5.9	66							
	Nonparticipants	77434	3585	55464	72	21970	28	7374	10	66	0	3.9	49	6.4	49	5.8	44	6.4	40	4.3	48	4.5	50							
	No Information Provided	77	3621	54	70	23	30	13	17	3	4	3.8	47	6.7	51	6.0	46	5.2	33	5.0	55	5.0	55							
At-Risk	Yes	68654	3567	50749	74	17905	26	5480	8	20	0	3.8	48	6.3	48	5.7	43	6.3	39	4.3	47	4.4	49							
	No	9233	3738	4875	53	4358	47	2064	22	65	1	4.5	57	7.3	56	6.8	53	7.1	45	5.0	55	5.1	56							
	No Information Provided	73	3614	51	70	22	30	12	16	3	4	3.8	47	6.7	51	6.1	47	5.2	32	4.9	55	4.8	53							
Career/Technical Education	Participants	55862	3592	39850	71	16012	29	5336	10	51	0	3.9	49	6.4	50	5.8	45	6.4	40	4.4	48	4.5	50							
	Nonparticipants	22003	3575	15759	72	6244	28	2205	10	34	0	3.8	48	6.4	49	5.8	44	6.3	39	4.3	48	4.5	50							
	No Information Provided	95	3562	66	69	29	31	15	16	3	3	3.7	47	6.5	50	5.9	46	4.9	31	4.7	52	4.6	51							

* Students who took the paper STAAR with embedded supports version of the test are not included in the reporting category results.



STATE OF TEXAS ASSESSMENTS OF ACADEMIC READINESS
Constructed Responses Summary Report
ENGLISH I
All Students

STATEWIDE

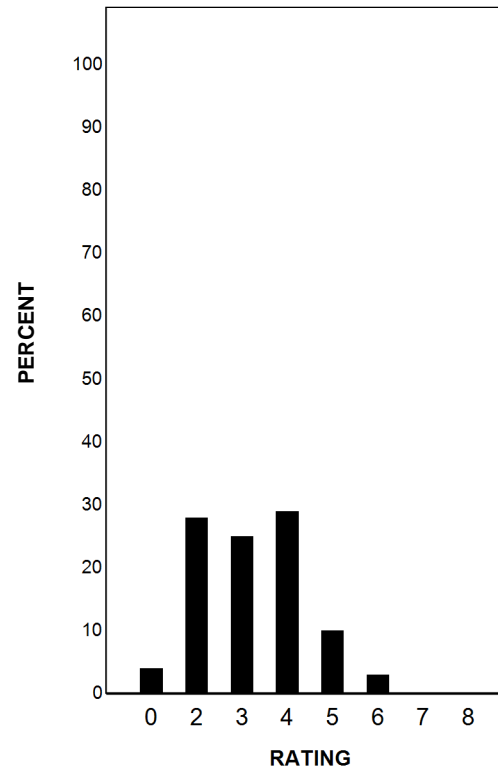
Report Date: SUMMER 2018
Date of Testing: SUMMER 2018

--- = No Data Reported For Fewer Than Five Students

Written Composition Rating Summary*

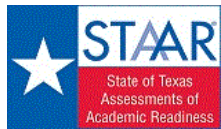
Expository Composition

Rating	#	%
0	3445	4
2	21952	28
3	19325	25
4	22675	29
5	7751	10
6	2510	3
7	229	0
8	45	0
Total	77932	100



Each composition has been scored independently by two readers. The written composition rating of 0-8 represents the summation of these scores.

* Students who took the paper STAAR with embedded supports version of the test are not included in this report.



STATE OF TEXAS ASSESSMENTS OF ACADEMIC READINESS

Summary Report

ENGLISH I

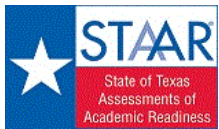
First-Time Tested Students

STATEWIDE

Report Date: SUMMER 2018
Date of Testing: SUMMER 2018

Administration Summary			Number of Students Tested	Average Scale Score	Did Not Meet		Approaches		Meets		Masters		Results for Each Reporting Category*													
													1	2	3	4	5	6								
Number	Percent											Understanding/ Analysis Across Genres		Understanding/ Analysis of Literary Texts		Understanding/ Analysis of Informational Texts		Composition		Revision		Editing				
Students Tested			1261	74																						
Students Not Tested																										
Absent			0	0																						
Other			449	26																						
Total Documents Submitted			1710	100																						
Legend			--- = No Data Reported For Fewer Than Five Students																							
			#		%		#		%		#		%		#		%		#		%		#		%	
All Students			1261	3792	624	49	637	51	473	38	67	5	4.6	57	7.6	59	7.4	57	7.0	44	5.2	58	5.3	59		
Male			664	3643	393	59	271	41	187	28	18	3	4.1	51	6.9	53	6.6	51	6.1	38	4.9	54	4.9	54		
Female			595	3959	230	39	365	61	286	48	49	8	5.1	63	8.4	65	8.3	64	8.0	50	5.6	63	5.9	65		
No Information Provided			2	---	---	---	---	---	---	---	---	---	---	---	---	---	---	---	---	---	---	---	---	---		
Hispanic/Latino			606	3703	340	56	266	44	178	29	21	3	4.3	54	7.2	55	6.9	53	6.5	41	4.9	55	5.0	56		
American Indian or Alaska Native			3	---	---	---	---	---	---	---	---	---	---	---	---	---	---	---	---	---	---	---	---	---		
Asian			48	3652	30	63	18	38	14	29	3	6	3.6	45	6.5	50	6.3	49	6.1	38	4.6	51	4.6	52		
Black or African American			193	3558	129	67	64	33	41	21	3	2	4.0	50	6.1	47	6.1	47	6.1	38	4.6	51	4.7	52		
Native Hawaiian or Other Pacific Islander			11	3589	8	73	3	27	2	18	0	0	3.2	40	6.2	48	5.2	40	6.4	40	4.8	54	4.8	54		
White			351	4076	97	28	254	72	215	61	35	10	5.4	68	9.2	71	9.2	71	8.3	52	6.2	69	6.2	69		
Two or More Races			30	4005	9	30	21	70	14	47	3	10	5.3	67	8.8	67	8.2	63	7.9	49	5.9	66	6.3	70		
No Information Provided			19	3826	9	47	10	53	8	42	1	5	4.2	52	7.4	57	7.8	60	7.3	45	5.1	57	5.5	61		
Economically Disadvantaged			807	3660	485	60	322	40	217	27	17	2	4.2	52	6.9	53	6.6	51	6.3	39	4.8	54	4.9	55		
Yes			418	4046	120	29	298	71	244	58	47	11	5.3	66	8.9	69	9.0	69	8.4	52	6.0	67	6.1	68		
No			36	3815	19	53	17	47	12	33	3	8	3.9	49	7.9	60	7.6	58	6.6	41	5.4	60	5.7	63		
No Information Provided			36	3815	19	53	17	47	12	33	3	8	3.9	49	7.9	60	7.6	58	6.6	41	5.4	60	5.7	63		
Title I, Part A			687	3695	386	56	301	44	206	30	22	3	4.3	54	7.1	54	6.8	52	6.5	41	4.9	55	5.0	56		
Participants			539	3909	223	41	316	59	254	47	42	8	4.9	61	8.3	64	8.2	63	7.6	47	5.6	62	5.7	63		
Nonparticipants			35	3891	15	43	20	57	13	37	3	9	4.4	55	8.1	62	8.0	62	7.3	45	5.7	63	6.1	68		
No Information Provided			35	3891	15	43	20	57	13	37	3	9	4.4	55	8.1	62	8.0	62	7.3	45	5.7	63	6.1	68		
Migrant			7	3650	5	71	2	29	1	14	0	0	3.4	43	6.0	46	6.4	49	6.6	41	5.1	57	5.7	63		
Yes			1200	3793	590	49	610	51	453	38	63	5	4.6	57	7.6	59	7.4	57	7.0	44	5.3	58	5.3	59		
No			54	3787	29	54	25	46	19	35	4	7	4.3	53	7.6	58	7.4	57	6.5	41	5.1	57	5.4	60		
No Information Provided			54	3787	29	54	25	46	19	35	4	7	4.3	53	7.6	58	7.4	57	6.5	41	5.1	57	5.4	60		
Limited English Proficient			239	3431	199	83	40	17	15	6	0	0	3.1	38	5.6	43	5.0	38	4.9	30	4.1	45	4.1	46		
Current LEP			23	3668	11	48	12	52	5	22	0	0	4.1	51	6.7	52	7.2	55	6.6	41	4.9	54	5.4	60		
Non-LEP (Monitored 1st Year)			7	3987	2	29	5	71	4	57	0	0	5.4	68	9.4	73	9.1	70	7.4	46	5.7	63	5.3	59		
Non-LEP (Monitored 2nd Year)			957	3882	395	41	562	59	437	46	64	7	4.9	62	8.1	62	8.0	62	7.5	47	5.5	62	5.6	63		
Other Non-LEP			35	3846	17	49	18	51	12	34	3	9	4.1	51	8.0	62	7.7	59	6.9	43	5.5	61	5.9	65		
No Information Provided			35	3846	17	49	18	51	12	34	3	9	4.1	51	8.0	62	7.7	59	6.9	43	5.5	61	5.9	65		
Bilingual			1	---	---	---	---	---	---	---	---	---	---	---	---	---	---	---	---	---	---	---	---	---		
Participants			1225	3791	606	49	619	51	460	38	64	5	4.6	57	7.6	59	7.4	57	7.0	44	5.2	58	5.3	59		
Nonparticipants			35	3832	18	51	17	49	12	34	3	9	4.1	51	7.9	60	7.6	58	6.9	43	5.4	60	5.8	64		
No Information Provided			35	3832	18	51	17	49	12	34	3	9	4.1	51	7.9	60	7.6	58	6.9	43	5.4	60	5.8	64		
ESL			233	3421	196	84	37	16	13	6	0	0	3.1	39	5.5	43	5.0	39	4.7	30	4.0	45	4.1	45		
Participants			990	3879	407	41	583	59	448	45	64	6	4.9	61	8.1	62	8.0	61	7.5	47	5.5	61	5.6	62		
Nonparticipants			38	3802	21	55	17	45	12	32	3	8	4.1	51	7.7	59	7.4	57	6.6	41	5.3	59	5.8	64		
No Information Provided			38	3802	21	55	17	45	12	32	3	8	4.1	51	7.7	59	7.4	57	6.6	41	5.3	59	5.8	64		
Special Education			164	3400	132	80	32	20	18	11	2	1	3.5	44	5.9	45	5.1	39	4.7	29	4.1	46	3.7	41		
Yes			1061	3852	473	45	588	55	443	42	62	6	4.7	59	7.9	60	7.8	60	7.3	46	5.4	60	5.6	62		
No			36	3820	19	53	17	47	12	33	3	8	4.0	50	7.8	60	7.8	60	6.6	41	5.3	59	5.9	65		
No Information Provided			36	3820	19	53	17	47	12	33	3	8	4.0	50	7.8	60	7.8	60	6.6	41	5.3	59	5.9	65		
Gifted/Talented			60	4505	2	3	58	97	56	93	18	30	6.7	83	10.8	83	11.1	85	10.3	64	7.8	87	7.9	88		
Participants			1164	3754	603	52	561	48	405	35	46	4	4.5	56	7.4	57	7.2	56	6.8	43	5.1	57	5.2	58		
Nonparticipants			37	3824	19	51	18	49	12	32	3	8	4.1	51	7.9	60	7.6	59	6.6	42	5.4	59	5.9	65		
No Information Provided			37	3824	19	51	18	49	12	32	3	8	4.1	51	7.9	60	7.6	59	6.6	42	5.4	59	5.9	65		
At-Risk			845	3615	534	63	311	37	189	22	14	2	4.0	50	6.7	52	6.4	49	6.1	38	4.6	52	4.7	52		
Yes			381	4182	72	19	309	81	273	72	50	13	5.8	73	9.5	73	9.7	75	9.1	57	6.6	73	6.7	74		
No			35	3816	18	51	17	49	11	31	3	9	4.0	50	7.8	60	7.6	58	6.6	41	5.4	60	5.7	64		
No Information Provided			35	3816	18	51	17	49	11	31	3	9	4.0	50	7.8	60	7.6	58	6.6	41	5.4	60	5.7	64		
Career/Technical Education			652	3849	303	46	349	54	264	40	35	5	4.7	59	7.9	60	7.6	58	7.3	46	5.4	60	5.5	61		
Participants			573	3724	305	53	268	47	197	34	29	5	4.4	55	7.3	56	7.2	55	6.7	42	5.1	56	5.1	57		
Nonparticipants			36	3836	16	44	20	56	12	33	3	8	4.2	53	8.1	62	7.9	61	6.3	39	5.5	61	5.8	65		
No Information Provided			36	3836	16	44	20	56	12	33	3	8	4.2	53	8.1	62	7.9	61	6.3	39	5.5	61	5.8	65		

* Students who took the paper STAAR with embedded supports version of the test are not included in the reporting category results.



STATE OF TEXAS ASSESSMENTS OF ACADEMIC READINESS
Constructed Responses Summary Report
ENGLISH I
First-Time Tested Students

STATEWIDE

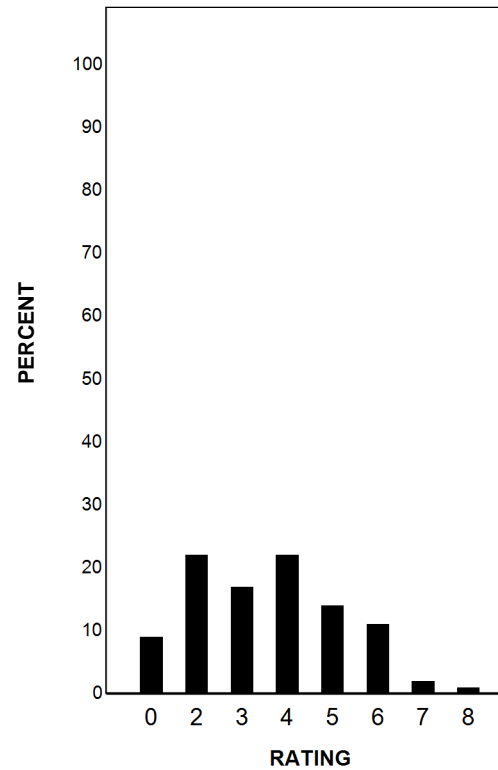
Report Date: SUMMER 2018
Date of Testing: SUMMER 2018

--- = No Data Reported For Fewer Than Five Students

Written Composition Rating Summary*

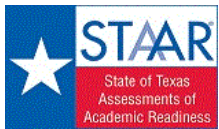
Expository Composition

Rating	#	%
0	117	9
2	281	22
3	217	17
4	280	22
5	173	14
6	139	11
7	30	2
8	18	1
Total	1255	100



Each composition has been scored independently by two readers. The written composition rating of 0-8 represents the summation of these scores.

* Students who took the paper STAAR with embedded supports version of the test are not included in this report.



STATE OF TEXAS ASSESSMENTS OF ACADEMIC READINESS
Constructed Responses Summary Report
ENGLISH I
Retested Students

STATEWIDE

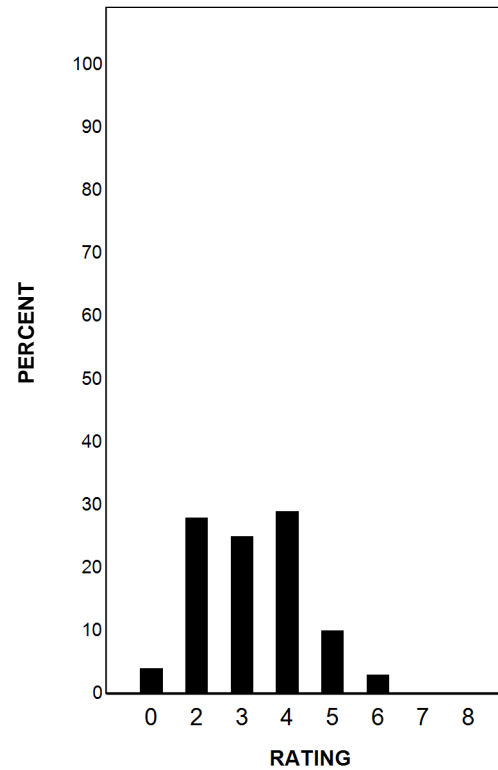
Report Date: SUMMER 2018
Date of Testing: SUMMER 2018

--- = No Data Reported For Fewer Than Five Students

Written Composition Rating Summary*

Expository Composition

Rating	#	%
0	3328	4
2	21671	28
3	19108	25
4	22395	29
5	7578	10
6	2371	3
7	199	0
8	27	0
Total	76677	100



Each composition has been scored independently by two readers. The written composition rating of 0-8 represents the summation of these scores.

* Students who took the paper STAAR with embedded supports version of the test are not included in this report.