

# STATE OF TEXAS ASSESSMENTS OF ACADEMIC READINESS

## Summary Report

### ENGLISH I

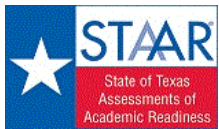
#### All Students

STATEWIDE

Report Date: FALL 2017  
Date of Testing: FALL 2017

Administration Summary			Number of Students Tested	Average Scale Score	Did Not Meet	Approaches	Meets	Masters	Results for Each Reporting Category*															
									1	2	3	4	5	6	Understanding/ Analysis Across Genres	Understanding/ Analysis of Literary Texts	Understanding/ Analysis of Informational Texts	Composition	Revision	Editing				
Number	Percent	#	%	#	%	#	%	#	%	Number of Points Possible											Number of Points Scored			
Legend										8		13		13		16		9		9				
--- = No Data Reported For Fewer Than Five Students			#		#		#		#		#		#		#		#							
<b>All Students</b>			147728	3532	112374	76	35354	24	10356	7	553	0	3.3	41	6.2	48	6.9	53	6.2	39	4.3	48	4.1	46
<b>Male</b>			91368	3503	71686	78	19682	22	5353	6	190	0	3.2	40	6.1	47	6.7	51	5.9	37	4.3	47	4.1	45
<b>Female</b>			56356	3579	40685	72	15671	28	5003	9	363	1	3.5	44	6.5	50	7.3	56	6.5	41	4.4	48	4.3	47
<b>No Information Provided</b>			4	---	---	---	---	---	---	---	---	---	---	---	---	---	---	---	---	---	---	---	---	---
<b>Hispanic/Latino</b>			95937	3530	73571	77	22366	23	6395	7	327	0	3.3	41	6.2	48	7.0	54	6.1	38	4.2	47	4.1	46
<b>American Indian or Alaska Native</b>			535	3508	417	78	118	22	34	6	2	0	3.2	40	6.2	48	6.7	52	5.7	36	4.2	47	4.0	45
<b>Asian</b>			2200	3537	1663	76	537	24	243	11	43	2	3.2	41	6.3	48	6.7	52	6.0	38	4.2	46	4.5	50
<b>Black or African American</b>			25928	3503	20554	79	5374	21	1227	5	19	0	3.3	41	6.0	46	6.7	51	5.9	37	4.3	47	4.1	45
<b>Native Hawaiian or Other Pacific Islander</b>			198	3542	146	74	52	26	13	7	2	1	3.3	41	6.2	48	6.8	52	6.4	40	4.2	47	4.3	48
<b>White</b>			21051	3570	14707	70	6344	30	2237	11	144	1	3.5	44	6.5	50	6.9	53	6.6	41	4.6	51	4.3	48
<b>Two or More Races</b>			1752	3573	1242	71	510	29	179	10	9	1	3.5	43	6.5	50	7.1	54	6.6	41	4.6	51	4.3	47
<b>No Information Provided</b>			127	3689	74	58	53	42	28	22	7	6	4.1	51	7.4	57	7.9	61	6.6	41	4.8	53	4.8	54
<b>Economically Disadvantaged</b>	Yes		110323	3520	85457	77	24866	23	6616	6	209	0	3.3	41	6.1	47	6.9	53	6.0	38	4.2	47	4.1	45
	No		37302	3567	26879	72	10423	28	3697	10	334	1	3.4	43	6.5	50	7.0	54	6.5	41	4.5	50	4.3	47
	No Information Provided		103	3962	38	37	65	63	43	42	10	10	4.9	61	8.9	69	9.2	70	8.0	50	5.9	65	5.6	62
<b>Title I, Part A</b>	Participants		85428	3532	65135	76	20293	24	6191	7	361	0	3.3	41	6.2	48	7.0	53	6.1	38	4.3	47	4.1	46
	Nonparticipants		62199	3531	47201	76	14998	24	4123	7	183	0	3.3	41	6.2	48	6.9	53	6.2	39	4.3	48	4.1	46
	No Information Provided		101	3945	38	38	63	62	42	42	9	9	4.8	60	8.8	67	9.1	70	7.9	50	5.7	64	5.6	62
<b>Migrant</b>	Yes		1454	3488	1184	81	270	19	57	4	3	0	3.1	39	5.9	45	6.9	53	5.6	35	4.1	45	4.0	45
	No		146078	3532	111074	76	35004	24	10252	7	541	0	3.3	41	6.2	48	6.9	53	6.2	39	4.3	48	4.1	46
	No Information Provided		196	3684	116	59	80	41	47	24	9	5	3.8	47	7.2	56	7.5	57	6.5	41	4.9	55	4.7	52
<b>Limited English Proficient</b>	Current LEP		41459	3432	35915	87	5544	13	936	2	5	0	2.9	37	5.5	43	6.4	49	5.3	33	3.8	42	3.8	43
	Non-LEP (Monitored 1st Year)		2162	3635	1410	65	752	35	207	10	1	0	3.7	46	7.0	54	8.0	61	6.7	42	4.7	52	4.4	49
	Non-LEP (Monitored 2nd Year)		2076	3646	1355	65	721	35	184	9	1	0	3.7	46	7.0	54	8.0	61	6.9	43	4.8	54	4.4	49
	Other Non-LEP		101915	3568	73645	72	28270	28	8986	9	537	1	3.4	43	6.5	50	7.1	55	6.5	41	4.5	50	4.2	47
	No Information Provided		116	3894	49	42	67	58	43	37	9	8	4.5	57	8.6	66	8.7	67	7.8	49	5.6	62	5.4	60
<b>Bilingual</b>	Participants		173	3746	91	53	82	47	50	29	7	4	4.0	50	7.8	60	8.3	64	7.1	44	5.2	58	4.7	52
	Nonparticipants		147395	3531	112204	76	35191	24	10257	7	537	0	3.3	41	6.2	48	6.9	53	6.2	38	4.3	48	4.1	46
	No Information Provided		160	3787	79	49	81	51	49	31	9	6	4.2	53	7.7	60	8.2	63	7.3	46	5.2	58	5.1	56
<b>ESL</b>	Participants		39681	3432	34372	87	5309	13	892	2	4	0	2.9	37	5.5	43	6.4	49	5.2	33	3.8	42	3.9	43
	Nonparticipants		107893	3568	77928	72	29965	28	9416	9	540	1	3.4	43	6.5	50	7.1	55	6.5	41	4.5	50	4.2	47
	No Information Provided		154	3797	74	48	80	52	48	31	9	6	4.2	53	7.8	60	8.2	63	7.4	47	5.2	58	5.1	56
<b>Special Education</b>	Yes		26278	3361	23973	91	2305	9	415	2	5	0	2.7	34	5.2	40	5.6	43	4.9	30	3.6	39	3.5	39
	No		121343	3568	88362	73	32981	27	9898	8	539	0	3.4	43	6.4	50	7.2	55	6.4	40	4.4	49	4.3	47
	No Information Provided		107	3951	39	36	68	64	43	40	9	8	4.8	59	8.8	68	9.2	70	8.2	51	5.8	64	5.5	61
<b>Gifted/Talented</b>	Participants		1395	4041	399	29	996	71	789	57	207	15	4.9	61	9.3	72	9.6	74	9.3	58	6.2	69	5.9	66
	Nonparticipants		146222	3527	111932	77	34290	23	9524	7	337	0	3.3	41	6.2	48	6.9	53	6.1	38	4.3	47	4.1	46
	No Information Provided		111	3929	43	39	68	61	43	39	9	8	4.7	59	8.8	67	8.9	69	8.0	50	5.7	64	5.5	61
<b>At-Risk</b>	Yes		131017	3511	102862	79	28155	21	6595	5	65	0	3.2	40	6.1	47	6.8	52	6.0	38	4.2	47	4.1	45
	No		16619	3695	9482	57	7137	43	3720	22	479	3	3.9	48	7.3	56	7.9	60	7.3	45	5.0	56	4.7	52
	No Information Provided		92	3998	30	33	62	67	41	45	9	10	5.1	63	9.2	71	9.3	72	8.4	52	5.9	65	5.6	62
<b>Career/Technical Education</b>	Participants		101593	3536	77504	76	24089	24	6511	6	276	0	3.3	41	6.2	48	7.0	53	6.2	39	4.3	48	4.1	46
	Nonparticipants		45984	3522	34793	76	11191	24	3799	8	268	1	3.3	41	6.2	47	6.8	53	6.1	38	4.3	47	4.1	46
	No Information Provided		151	3782	77	51	74	49	46	30	9	6	4.2	53	7.8	60	8.1	63	7.3	45	5.2	58	5.1	57

\* Students who took the paper STAAR with embedded supports version of the test are not included in the reporting category results.



STATE OF TEXAS ASSESSMENTS OF ACADEMIC READINESS  
Constructed Responses Summary Report  
ENGLISH I  
All Students

STATEWIDE

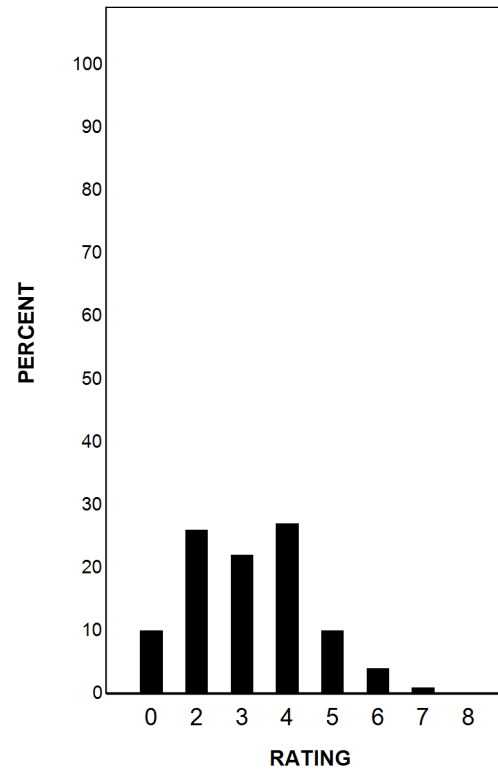
Report Date: FALL 2017  
Date of Testing: FALL 2017

--- = No Data Reported For Fewer Than Five Students

Written Composition Rating Summary\*

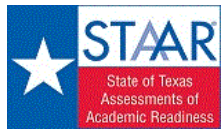
Expository Composition

Rating	#	%
0	14736	10
2	38086	26
3	32205	22
4	40179	27
5	15381	10
6	5613	4
7	1133	1
8	372	0
Total	147705	100



Each composition has been scored independently by two readers. The written composition rating of 0-8 represents the summation of these scores.

\* Students who took the paper STAAR with embedded supports version of the test are not included in this report.



# STATE OF TEXAS ASSESSMENTS OF ACADEMIC READINESS

## Summary Report

### ENGLISH I

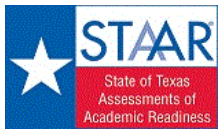
#### First-Time Tested Students

STATEWIDE

Report Date: FALL 2017  
Date of Testing: FALL 2017

Administration Summary			Number of Students Tested	Average Scale Score	Did Not Meet				Approaches				Meets				Masters				Results for Each Reporting Category*											
																					Number		Percent		1		2		3		4	
Students Tested		11876	90	Understanding/ Analysis Across Genres	Understanding/ Analysis of Literary Texts	Understanding/ Analysis of Informational Texts	Composition	Revision	Editing	Number of Points Possible																						
Students Not Tested		Absent	557							4	Other		738	6	8		13		16		9		9									
Total Documents Submitted		13171	100	Number of Points Scored																												
Legend			--- = No Data Reported For Fewer Than Five Students																													
			#	%	#	%	#	%	#	%	#	%	#	%	#	%	#	%	#	%	#	%	#	%								
<b>All Students</b>			11876	3737	5854	49	6022	51	3970	33	535	5	4.1	51	7.7	59	8.2	63	7.2	45	5.2	57	4.9	55								
Male			6294	3654	3506	56	2788	44	1736	28	182	3	3.8	48	7.3	56	7.6	59	6.6	41	5.0	55	4.7	52								
Female			5578	3830	2345	42	3233	58	2234	40	353	6	4.3	54	8.2	63	8.8	67	7.8	49	5.4	60	5.2	58								
No Information Provided			4	---	---	---	---	---	---	---	---	---	---	---	---	---	---	---	---	---	---	---	---	---								
Hispanic/Latino			8533	3760	4195	49	4338	51	2814	33	321	4	4.1	51	7.7	60	8.3	64	7.2	45	5.2	58	5.0	55								
American Indian or Alaska Native			41	3627	24	59	17	41	7	17	1	2	3.8	47	7.2	55	7.6	58	6.0	38	4.8	53	4.3	48								
Asian			321	3854	132	41	189	59	151	47	43	13	4.5	56	8.2	63	8.4	64	8.1	51	5.4	60	5.5	61								
Black or African American			1103	3587	708	64	395	36	202	18	17	2	3.6	45	6.7	51	7.2	55	6.4	40	4.7	52	4.3	48								
Native Hawaiian or Other Pacific Islander			13	3823	5	38	8	62	5	38	1	8	4.2	53	8.3	64	8.5	65	7.2	45	5.3	59	5.5	61								
White			1653	3685	703	43	950	57	706	43	136	8	4.3	53	8.0	61	8.1	62	7.5	47	5.4	60	5.1	56								
Two or More Races			163	3757	72	44	91	56	62	38	9	6	4.4	55	8.0	61	8.3	64	7.5	47	5.3	59	5.0	56								
No Information Provided			49	3997	15	31	34	69	23	47	7	14	5.3	67	9.2	70	9.3	72	8.0	50	6.0	66	5.9	65								
Economically Disadvantaged			Yes	8209	3705	4413	54	3796	46	2288	28	198	2	3.9	49	7.4	57	8.0	61	6.8	43	5.0	55	4.8	53							
			No	3582	3801	1416	40	2166	60	1640	46	327	9	4.4	55	8.3	64	8.5	66	7.9	49	5.6	62	5.2	58							
			No Information Provided	85	4049	25	29	60	71	42	49	10	12	5.2	65	9.4	72	9.4	73	8.6	54	6.1	68	5.9	66							
Title I, Part A			Participants	8694	3777	4187	48	4507	52	2927	34	351	4	4.1	51	7.8	60	8.3	64	7.3	46	5.2	58	5.0	56							
			Nonparticipants	3098	3615	1642	53	1456	47	1001	32	175	6	3.9	49	7.3	56	7.6	58	6.7	42	5.0	55	4.7	52							
			No Information Provided	84	4030	25	30	59	70	42	50	9	11	5.2	65	9.2	71	9.4	72	8.5	53	6.0	67	5.9	66							
Migrant			Yes	126	3668	80	63	46	37	25	20	3	2	3.9	48	7.1	55	8.0	62	6.2	39	4.8	53	4.5	50							
			No	11640	3736	5731	49	5909	51	3902	34	523	4	4.1	51	7.7	59	8.2	63	7.2	45	5.2	57	4.9	55							
			No Information Provided	110	3897	43	39	67	61	43	39	9	8	4.6	57	8.6	66	8.5	66	7.7	48	5.7	63	5.5	61							
Limited English Proficient			Current LEP	3411	3417	2775	81	636	19	235	7	5	0	3.0	38	5.6	43	6.2	48	4.7	29	3.8	42	4.0	44							
			Non-LEP (Monitored 1st Year)	402	3772	173	43	229	57	107	27	1	0	4.2	52	8.0	61	8.8	67	7.7	48	5.3	59	5.0	56							
			Non-LEP (Monitored 2nd Year)	143	3934	38	27	105	73	67	47	1	1	4.5	57	8.9	68	9.8	75	8.6	54	6.0	67	5.4	60							
			Other Non-LEP	7823	3868	2833	36	4990	64	3519	45	519	7	4.5	56	8.6	66	8.9	69	8.2	51	5.7	64	5.3	59							
			No Information Provided	97	3955	35	36	62	64	42	43	9	9	4.8	60	8.9	69	8.9	68	8.2	51	5.7	64	5.6	63							
Bilingual			Participants	71	4068	15	21	56	79	43	61	7	10	4.8	60	9.8	75	10.2	78	8.9	56	6.5	72	5.8	64							
			Nonparticipants	11704	3733	5803	50	5901	50	3881	33	519	4	4.1	51	7.7	59	8.1	63	7.1	45	5.2	57	4.9	55							
			No Information Provided	101	3945	36	36	65	64	46	46	9	9	4.8	60	8.7	67	8.8	68	8.2	51	5.7	63	5.7	63							
ESL			Participants	3363	3413	2743	82	620	18	226	7	4	0	3.0	38	5.5	43	6.2	48	4.7	29	3.8	42	4.0	44							
			Nonparticipants	8417	3863	3079	37	5338	63	3699	44	522	6	4.5	56	8.5	66	8.9	69	8.1	51	5.7	64	5.3	59							
			No Information Provided	96	3969	32	33	64	67	45	47	9	9	4.9	61	8.9	68	8.9	69	8.4	53	5.8	64	5.7	63							
Special Education			Yes	1029	3355	882	86	147	14	64	6	5	0	2.8	35	5.4	42	5.6	43	4.6	29	3.7	41	3.6	41							
			No	10762	3771	4948	46	5814	54	3864	36	521	5	4.2	52	7.9	61	8.4	64	7.4	46	5.3	59	5.0	56							
			No Information Provided	85	4047	24	28	61	72	42	49	9	11	5.1	64	9.4	72	9.5	73	8.8	55	6.1	67	5.8	65							
Gifted/Talented			Participants	833	4302	63	8	770	92	719	86	207	25	5.7	71	10.8	83	10.9	84	10.8	68	7.2	80	6.7	75							
			Nonparticipants	10956	3691	5764	53	5192	47	3209	29	319	3	3.9	49	7.4	57	7.9	61	6.9	43	5.0	56	4.8	53							
			No Information Provided	87	4027	27	31	60	69	42	48	9	10	5.1	64	9.3	72	9.3	71	8.6	54	6.0	67	5.9	65							
At-Risk			Yes	7722	3582	4963	64	2759	36	1344	17	54	1	3.6	44	6.7	52	7.3	56	6.0	38	4.5	50	4.4	49							
			No	4079	4022	874	21	3205	79	2585	63	472	12	5.0	63	9.5	73	9.7	75	9.2	58	6.3	70	5.9	65							
			No Information Provided	75	4104	17	23	58	77	41	55	9	12	5.5	69	9.8	75	9.7	74	9.1	57	6.2	69	6.1	67							
Career/Technical Education			Participants	5747	3786	2710	47	3037	53	2016	35	261	5	4.2	52	7.9	61	8.4	64	7.4	46	5.3	59	5.0	56							
			Nonparticipants	6041	3686	3118	52	2923	48	1912	32	265	4	3.9	49	7.5	57	7.9	61	6.9	43	5.0	56	4.8	54							
			No Information Provided	88	4019	26	30	62	70	42	48	9	10	5.1	63	9.1	70	9.3	71	8.7	54	6.0	67	5.9	65							

\* Students who took the paper STAAR with embedded supports version of the test are not included in the reporting category results.



STATE OF TEXAS ASSESSMENTS OF ACADEMIC READINESS  
*Constructed Responses Summary Report*  
**ENGLISH I**  
First-Time Tested Students

STATEWIDE

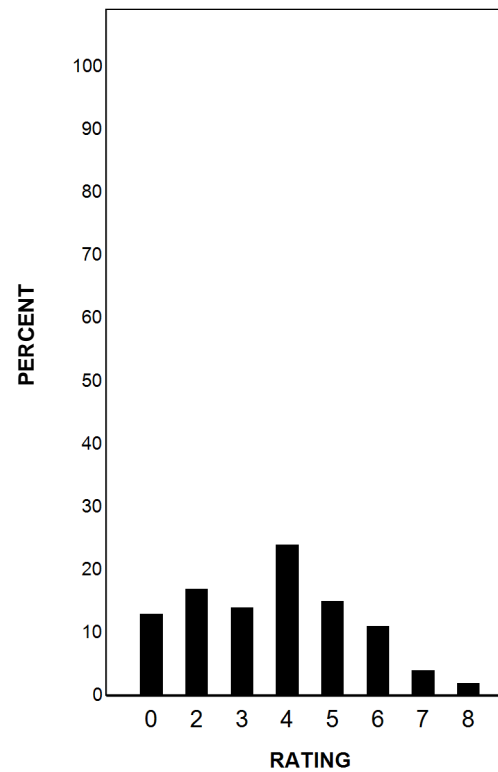
Report Date: FALL 2017  
Date of Testing: FALL 2017

--- = No Data Reported For Fewer Than Five Students

**Written Composition Rating Summary\***

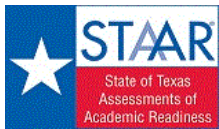
**Expository Composition**

Rating	#	%
0	1572	13
2	2011	17
3	1645	14
4	2791	24
5	1768	15
6	1285	11
7	529	4
8	269	2
Total	11870	100



Each composition has been scored independently by two readers. The written composition rating of 0-8 represents the summation of these scores.

\* Students who took the paper STAAR with embedded supports version of the test are not included in this report.



# STATE OF TEXAS ASSESSMENTS OF ACADEMIC READINESS

## Summary Report

### ENGLISH I

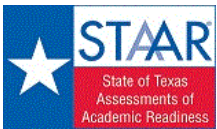
#### Retested Students

STATEWIDE

Report Date: FALL 2017  
Date of Testing: FALL 2017

Administration Summary			Number of Students Tested	Average Scale Score	Did Not Meet				Approaches				Meets				Masters				Results for Each Reporting Category*																	
																					Number	Percent	1		2		3		4		5		6					
Students Tested	135852	94																			Understanding/ Analysis Across Genres	Understanding/ Analysis of Literary Texts	Understanding/ Analysis of Informational Texts	Composition	Revision	Editing	Number of Points Possible											
																											8		13		13		16		9		9	
																											Number of Points Scored											
Legend																					--- = No Data Reported For Fewer Than Five Students																	
#	%	#	%	#	%	#	%	#	%	#	%	#	%	#	%	#	%	#	%	#	%	#	%	#	%													
<b>All Students</b>			135852	3514	106520	78	29332	22	6386	5	18	0	3.2	41	6.1	47	6.8	52	6.1	38	4.2	47	4.1	45														
<b>Male</b>			85074	3492	68180	80	16894	20	3617	4	8	0	3.1	39	6.0	46	6.6	51	5.9	37	4.2	47	4.0	45														
<b>Female</b>			50778	3551	38340	76	12438	24	2769	5	10	0	3.4	43	6.3	48	7.2	55	6.4	40	4.2	47	4.2	46														
<b>No Information Provided</b>			0	---	---	---	---	---	---	---	---	---	---	---	---	---	---	---	---	---	---	---	---	---														
<b>Hispanic/Latino</b>			87404	3508	69376	79	18028	21	3581	4	6	0	3.2	40	6.0	47	6.9	53	6.0	38	4.1	46	4.0	45														
<b>American Indian or Alaska Native</b>			494	3499	393	80	101	20	27	5	1	0	3.2	40	6.1	47	6.6	51	5.7	36	4.2	46	4.0	45														
<b>Asian</b>			1879	3483	1531	81	348	19	92	5	0	0	3.0	38	6.0	46	6.4	49	5.6	35	4.0	44	4.3	48														
<b>Black or African American</b>			24825	3500	19846	80	4979	20	1025	4	2	0	3.2	40	6.0	46	6.7	51	5.9	37	4.2	47	4.1	45														
<b>Native Hawaiian or Other Pacific Islander</b>			185	3522	141	76	44	24	8	4	1	1	3.2	40	6.0	46	6.7	52	6.3	39	4.2	46	4.3	47														
<b>White</b>			19398	3560	14004	72	5394	28	1531	8	8	0	3.4	43	6.4	49	6.8	53	6.5	41	4.5	50	4.2	47														
<b>Two or More Races</b>			1589	3554	1170	74	419	26	117	7	0	0	3.4	42	6.4	49	6.9	53	6.5	41	4.5	50	4.2	47														
<b>No Information Provided</b>			78	3496	59	76	19	24	5	6	0	0	3.3	41	6.3	48	7.0	54	5.7	36	4.0	45	4.2	47														
<b>Economically Disadvantaged</b>	Yes		102114	3505	81044	79	21070	21	4328	4	11	0	3.2	40	6.0	46	6.8	52	6.0	37	4.2	46	4.0	45														
	No		33720	3542	25463	76	8257	24	2057	6	7	0	3.3	42	6.3	48	6.9	53	6.4	40	4.4	49	4.1	46														
	No Information Provided		18	3556	13	72	5	28	1	6	0	0	3.3	41	6.7	52	7.8	60	5.4	34	4.7	52	3.8	42														
<b>Title I, Part A</b>	Participants		76734	3504	60948	79	15786	21	3264	4	10	0	3.2	40	6.0	46	6.8	52	6.0	37	4.2	46	4.0	45														
	Nonparticipants		59101	3527	45559	77	13542	23	3122	5	8	0	3.3	41	6.2	47	6.8	53	6.2	39	4.3	48	4.1	45														
	No Information Provided		17	3524	13	76	4	24	0	0	0	0	3.2	40	6.5	50	7.8	60	5.2	32	4.3	48	3.8	42														
<b>Migrant</b>	Yes		1328	3471	1104	83	224	17	32	2	0	0	3.1	38	5.8	45	6.7	52	5.5	34	4.0	45	4.0	44														
	No		134438	3514	105343	78	29095	22	6350	5	18	0	3.2	41	6.1	47	6.8	52	6.1	38	4.2	47	4.1	45														
	No Information Provided		86	3411	73	85	13	15	4	5	0	0	2.8	35	5.5	43	6.1	47	5.1	32	3.9	44	3.6	40														
<b>Limited English Proficient</b>	Current LEP		38048	3433	33140	87	4908	13	701	2	0	0	2.9	37	5.5	43	6.4	49	5.3	33	3.8	42	3.8	43														
	Non-LEP (Monitored 1st Year)		1760	3604	1237	70	523	30	100	6	0	0	3.5	44	6.7	52	7.8	60	6.5	41	4.6	51	4.3	48														
	Non-LEP (Monitored 2nd Year)		1933	3625	1317	68	616	32	117	6	0	0	3.6	45	6.8	53	7.9	60	6.7	42	4.7	53	4.4	49														
	Other Non-LEP		94092	3543	70812	75	23280	25	5467	6	18	0	3.4	42	6.3	48	6.9	53	6.4	40	4.4	48	4.1	46														
	No Information Provided		19	3585	14	74	5	26	1	5	0	0	3.3	41	6.7	51	8.1	62	5.7	36	4.9	54	4.1	46														
<b>Bilingual</b>	Participants		102	3521	76	75	26	25	7	7	0	0	3.4	43	6.4	50	7.1	54	5.8	36	4.3	48	3.9	44														
	Nonparticipants		135691	3514	106401	78	29290	22	6376	5	18	0	3.2	41	6.1	47	6.8	52	6.1	38	4.2	47	4.1	45														
	No Information Provided		59	3516	43	73	16	27	3	5	0	0	3.2	39	6.2	47	7.0	54	5.8	36	4.3	48	4.1	45														
<b>ESL</b>	Participants		36318	3433	31629	87	4689	13	666	2	0	0	2.9	37	5.5	42	6.4	49	5.3	33	3.8	42	3.8	43														
	Nonparticipants		99476	3543	74849	75	24627	25	5717	6	18	0	3.4	42	6.3	48	7.0	54	6.4	40	4.4	48	4.1	46														
	No Information Provided		58	3514	42	72	16	28	3	5	0	0	3.2	39	6.2	47	7.0	54	5.8	36	4.3	47	4.1	45														
<b>Special Education</b>	Yes		25249	3361	23091	91	2158	9	351	1	0	0	2.7	34	5.2	40	5.6	43	4.9	31	3.5	39	3.5	39														
	No		110581	3549	83414	75	27167	25	6034	5	18	0	3.4	42	6.3	48	7.1	54	6.3	40	4.4	49	4.2	46														
	No Information Provided		22	3579	15	68	7	32	1	5	0	0	3.3	41	6.7	51	7.8	60	5.8	36	4.7	52	4.3	47														
<b>Gifted/Talented</b>	Participants		562	3654	336	60	226	40	70	12	0	0	3.7	46	7.1	55	7.7	59	7.1	45	4.8	54	4.7	52														
	Nonparticipants		135266	3513	106168	78	29098	22	6315	5	18	0	3.2	40	6.1	47	6.8	52	6.1	38	4.2	47	4.1	45														
	No Information Provided		24	3575	16	67	8	33	1	4	0	0	3.3	41	6.7	52	7.7	59	5.8	36	4.8	53	4.2	47														
<b>At-Risk</b>	Yes		123295	3506	97899	79	25396	21	5251	4	11	0	3.2	40	6.0	46	6.8	52	6.0	38	4.2	46	4.0	45														
	No		12540	3589	8608	69	3932	31	1135	9	7	0	3.5	44	6.6	51	7.3	56	6.6	41	4.6	51	4.3	48														
	No Information Provided		17	3530	13	76	4	24	0	0	0	0	3.2	40	6.6	51	7.8	60	5.2	32	4.5	50	3.6	40														
<b>Career/Technical Education</b>	Participants		95846	3521	74794	78	21052	22	4495	5	15	0	3.3	41	6.1	47	6.9	53	6.1	38	4.2	47	4.1	45														
	Nonparticipants		39943	3497	31675	79	8268	21	1887	5	3	0	3.2	40	6.0	46	6.7	51	6.0	37	4.2	46	4.0	45														
	No Information Provided		63	3452	51	81	12	19	4	6	0	0	3.1	38	5.9	45	6.6	51	5.3	33	4.0	45	4.1	45														

\* Students who took the paper STAAR with embedded supports version of the test are not included in the reporting category results.



STATE OF TEXAS ASSESSMENTS OF ACADEMIC READINESS  
*Constructed Responses Summary Report*  
**ENGLISH I**  
**Retested Students**

STATEWIDE

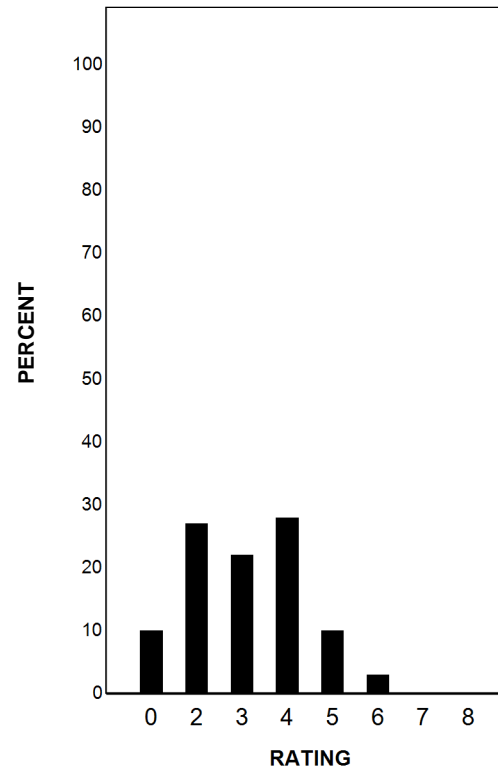
Report Date: FALL 2017  
Date of Testing: FALL 2017

--- = No Data Reported For Fewer Than Five Students

**Written Composition Rating Summary\***

**Expository Composition**

Rating	#	%
0	13164	10
2	36075	27
3	30560	22
4	37388	28
5	13613	10
6	4328	3
7	604	0
8	103	0
Total	135835	100



Each composition has been scored independently by two readers. The written composition rating of 0-8 represents the summation of these scores.

\* Students who took the paper STAAR with embedded supports version of the test are not included in this report.