

## SPPI 7E Calculation

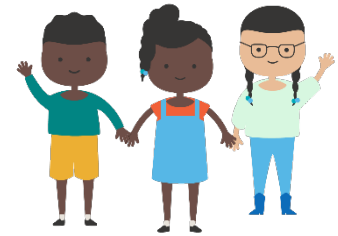
Number of preschool children who maintained functioning  
at a level comparable to same-aged peers

**Divided by**

Number of preschool children with IEPs assessed

**Multiplied by**

100



(Data reported in SPP 7 TEAL Early Childhood Outcome Application)

## SPPI 7E Calculation Example

Progress Categories	#
a. Preschool children who did not improve functioning	200
b. Preschool children who improved functioning but not sufficient to move nearer to functioning comparable to same-aged peers	2,000
c. Preschool children who improved functioning to a level nearer to same-aged peers but did not reach it	2,800
d. Preschool children who improved functioning to reach a level comparable to same-aged peers	4,000
e. Preschool children who maintained functioning at a level comparable to same-aged peers	1,000



### Maintained Functioning at a Level Comparable to Same-Aged Peers Calculation

$$\begin{aligned}
 \text{Percentage} &= [e / (a + b + c + d + e)] \times 100 \\
 &= [1,000 / (200 + 2,000 + 2,800 + 4,000 + 1,000)] \times 100 \\
 &= (1,000 / 10,000) \times 100 \\
 &= 0.1 \times 100 \\
 &= 10\%
 \end{aligned}$$

