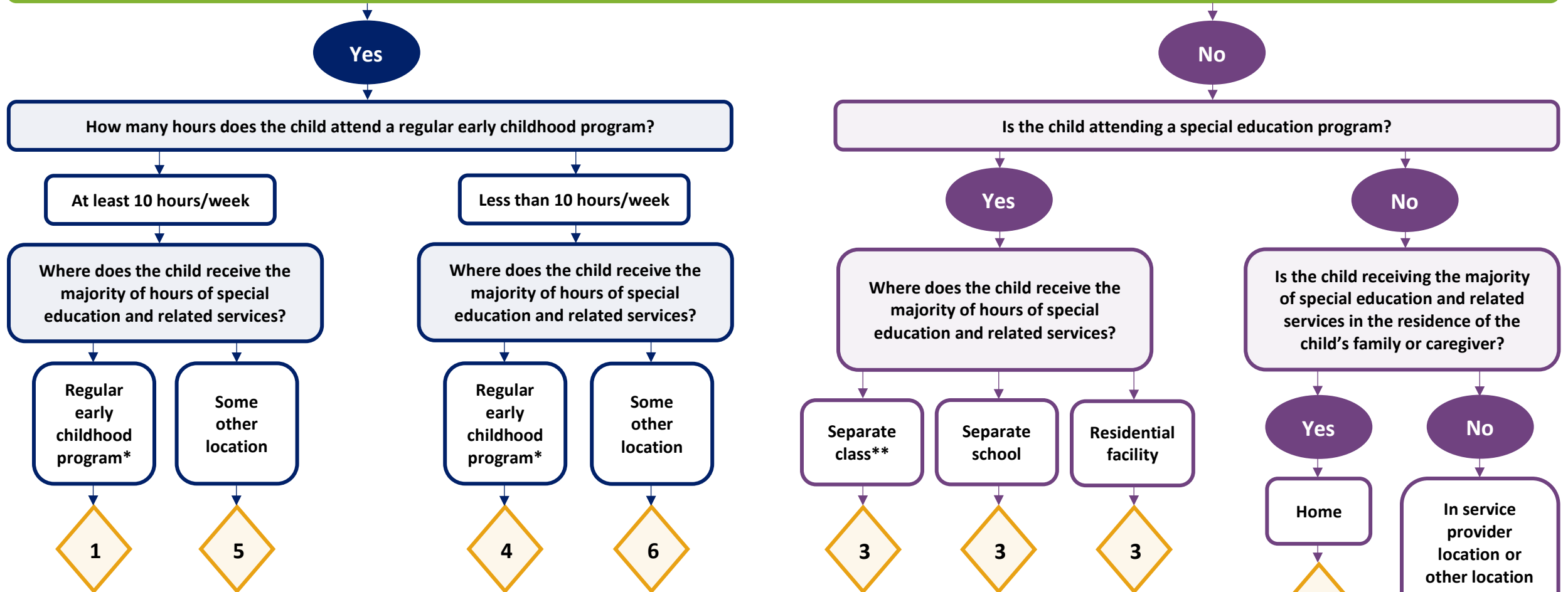


Decision Tree for Reporting Educational Environments for Children Ages 3-5 with IEPs

Texas PEIMS Codes

Is the child ENROLLED in a regular early childhood program?



Please refer to federal instructions and state guidance for specific reporting requirements when using this decision tree. Report each child in only one category.

***Regular Early Childhood Program**

is a program that includes a majority (at least 50 percent) of nondisabled children (i.e., children without IEPs). This category may include, but is not limited to:

- Head Start
- Kindergarten (public or private)
- Preschool (public or private)
- Group child development center or childcare

****Separate Class**

is a special education classroom that includes a majority (at least 50%) of children with disabilities (i.e., children with IEPs). This category may include, but is not limited to:

- Regular school buildings
- Trailers/portables
- Childcare facilities
- Hospital facilities (out-patient)
- Other community-based settings