

Correlation Review Accounts

In order for Istation Reading correlations links to be reviewed, the application must be installed onto a computer and reviewers will need to log into the application and/or the Istation website as they review. Assigned account owners, usernames and passwords, installation, login procedures and correlation review instructions have been provided below.

Usernames and passwords are the same for both the Istation application and Istation website. Reviewers should only have to log into to each once as they review correlation citations.

Usernames and Passwords:

Account Owner	Username	Password	Domain
TEA	demo21	tea	review.tea.tx

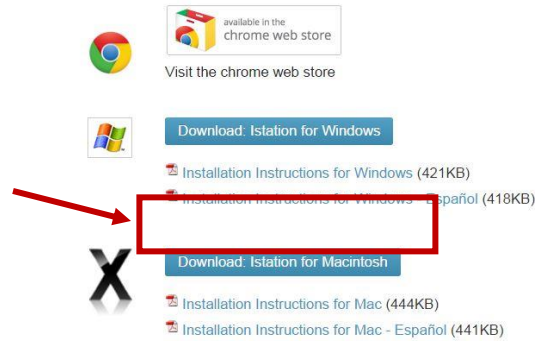
Installation for Windows: (Installation instructions can be also found here: <https://www.istation.com/Support>)

Use the following instructions to install Istation on computers that meet the Windows system requirements (to view the system requirements, visit <http://www.istation.com/support/technicalinfo>).

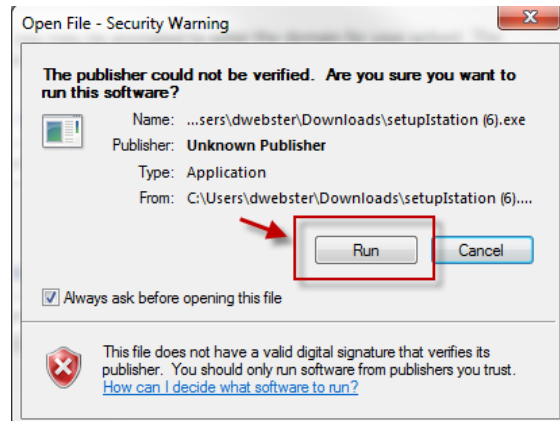
If there is a protection program on the computers, follow the protection program's instructions for disabling the program before installing Istation. To ensure program reliability, Istation writes encrypted data to the hard drive that must survive reboots. Programs that inhibit this operation, such as Deep Freeze or Clean Slate, must be configured to permit Istation to save data to its folder.

NOTE: You must be logged in as an Administrator (with Administrator rights) to the computer(s) on which you are installing Istation. **If you cannot download Istation onto your computer, please see [Flash Drive Option](#) in this document.**

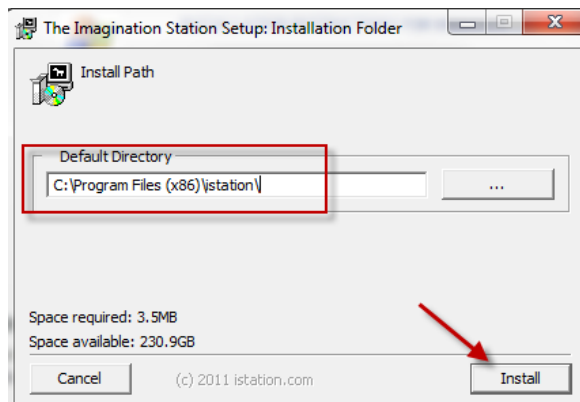
1. Go to www.istation.com/Support.
2. Scroll to middle of webpage.
3. Click the **Download: Istation for Windows** button.



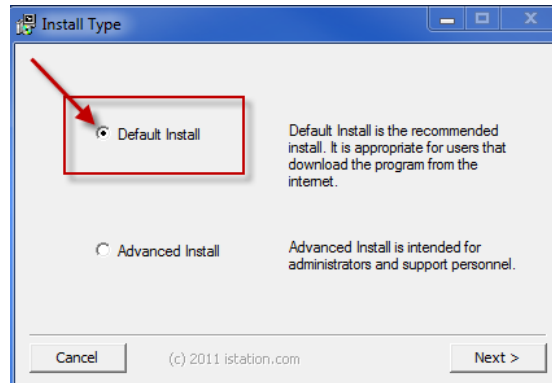
4. Click **Run** or **Open**.



5. Click **Install** to accept the Default directory.



- Click **Next** to accept the Default installation.



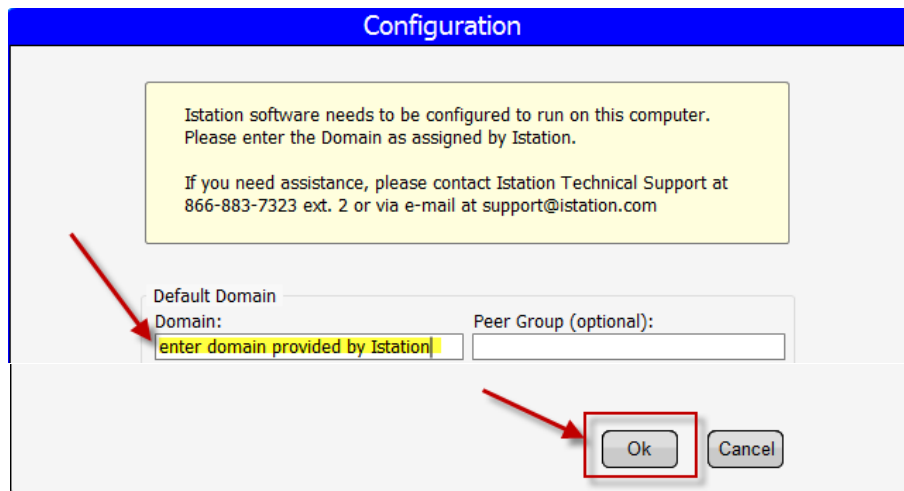
- The program should run automatically. If not, minimize the website and click on **The Imagination Station** icon to start.



- Type your reviewer domain in the **Default Domain** box, if it is not automatically supplied. The reviewer domain is: **review.tea.tx**

NOTE: Do not type in the **Peer Group** area.

- Click **OK**. The application will automatically restart.



Reviewers can now log in using this icon to access the student application. Remember, reviewers will want to log in to the Istation website (www.istation.com) to view correlations links connected with Istation Teacher Resources.

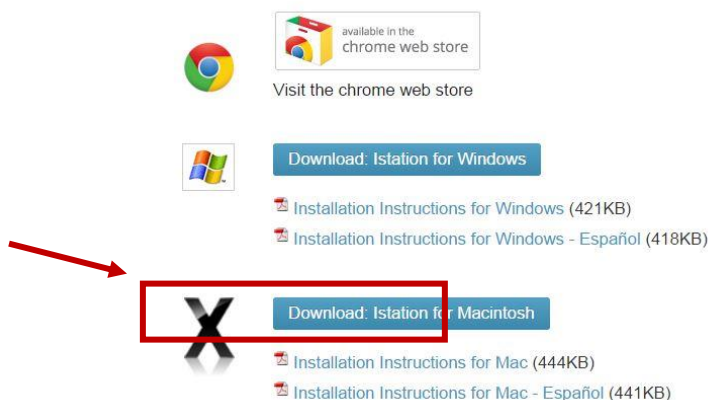
Installation for Mac:

Use the following instructions to install Istation on computers that meet the Macintosh system requirements (view the system requirements, visit <http://www.istation.com/support/technicalinfo>).

If there is a protection program on the computers, follow the protection program's instructions for disabling the program before installing Istation. To ensure program reliability, Istation writes encrypted data to the hard drive that must survive reboots. Programs that inhibit this operation, such as Deep Freeze or Clean Slate, must be configured to permit Istation to save data to its folder.

NOTE: To install Istation, you should first log into the Macintosh as a user with administrative privileges. Attempting to install as a user who does not have administrative privileges will prevent you from putting Istation into the Applications folder in step 5, and other users will not be able to run Istation.

1. Go to www.istation.com/Support.
2. Scroll to middle of webpage.
3. Click the **Download: Istation for Macintosh** button.

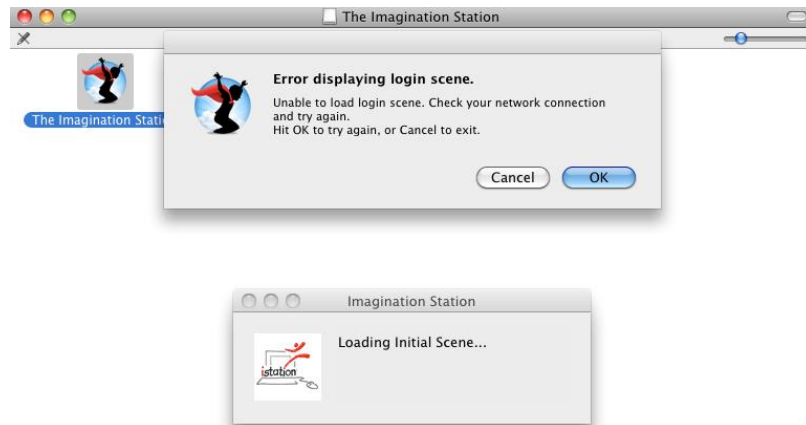


4. Click the Istation download link for the appropriate version of Mac OSX.
 - On Mac OSX 10.4: The Istation application will download to your Desktop. Proceed to step 5.
 - On Mac OSX 10.3 and 10.5+: The Istation application will download to your Downloads folder. The Download list should have opened in a separate window, displaying **The Imagination Station** icon along with the other items that have been downloaded to your computer. Move **The Imagination Station** icon to your Desktop by completing the following two steps:
 - a. Click on the **Show in Finder** icon (magnifying glass) to open the Downloads folder if it is not already open.
 - b. Then click on the **The Imagination Station** icon in the Downloads folder and drag the icon to the Desktop.

5. If you logged in as a user with administrative privileges, you may move **The Imagination Station** icon into the Applications directory if you wish to allow other users of the computer to access it. To do so, perform the following two steps:
 - a. Open a Finder window and navigate to the Applications directory, located within Macintosh HD.
 - b. You may now click and drag the **The Imagination Station** icon from the Desktop to the Applications directory.



NOTE: If you double-click the icon before dragging to the desktop, you will receive the following message:



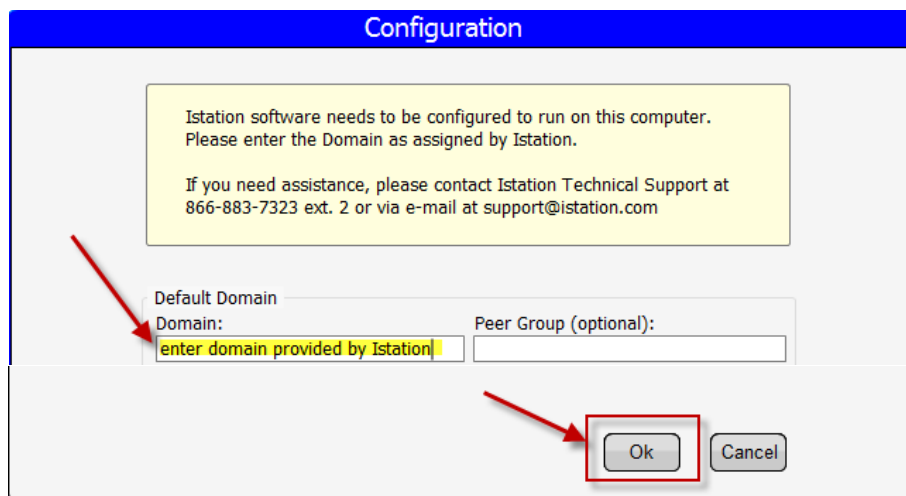
6. To run Istation, double-click **The Imagination Station** icon.



7. Type your reviewer domain in the **Default Domain** box if it is not automatically supplied. The reviewer domain is: **review.tea.tx**

NOTE: Do not type in the **Peer Group** area.

- Click **OK** on the message box that instructs to restart The Imagination Station.



- Double-click **The Imagination Station** icon again.

Reviewers can now log in using this icon to access the student application. Remember, reviewers will want to log in to the Istation website (www.istation.com) to view Teacher Resources.

Support for Installation:

If you need help with installation of Istation, contact Bryan Cassidy, Technical Support Manager at 866-883-7323, ext. 3892 or email bcassidy@istation.com.

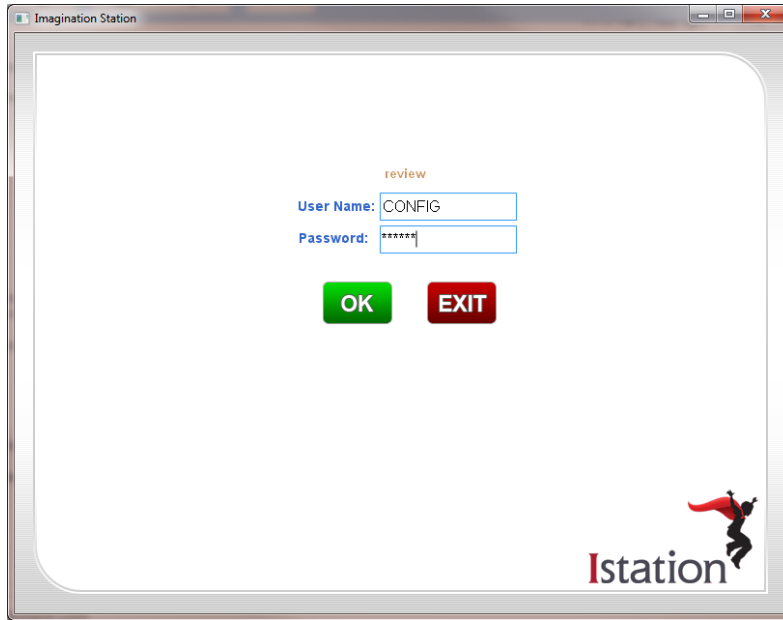
Changing Domains in Application:

If a reviewer currently has Istation installed on their computer, the program does not have to be installed again, but the domain will need to be changed. To change your domain:

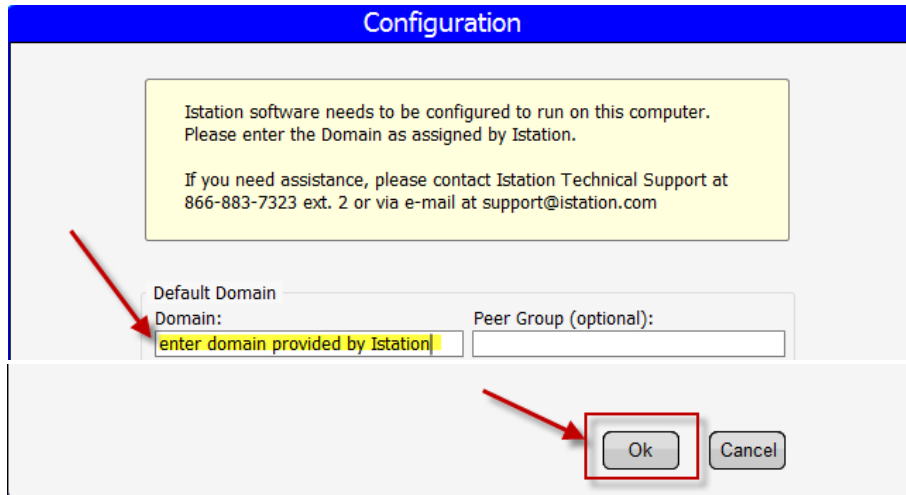
- Double-click on **Istation** icon on your desktop.



- Type in **config** as your **username and password**.
- Click **OK**.



4. Type your reviewer domain in the **Default Domain** box, if it is not automatically supplied. The reviewer domain is: **review**
5. NOTE: Do not type in the **Peer Group** area.
6. Click **OK**. The application will automatically restart.



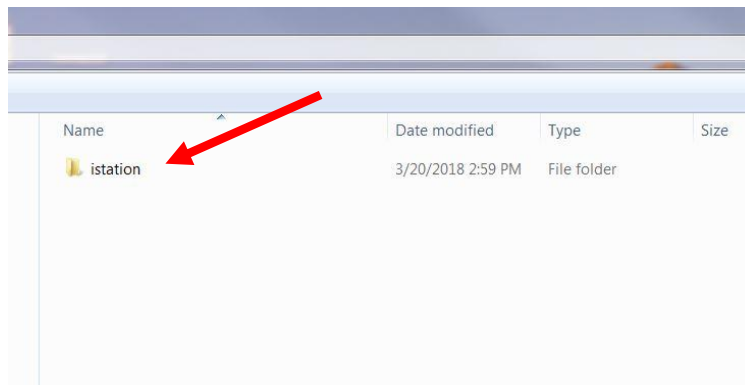
Flash Drive Option:

If organizational security doesn't allow you to download Istation Reading from the Istation website, a flash drive has been delivered to aid in reviewing the program without a download.

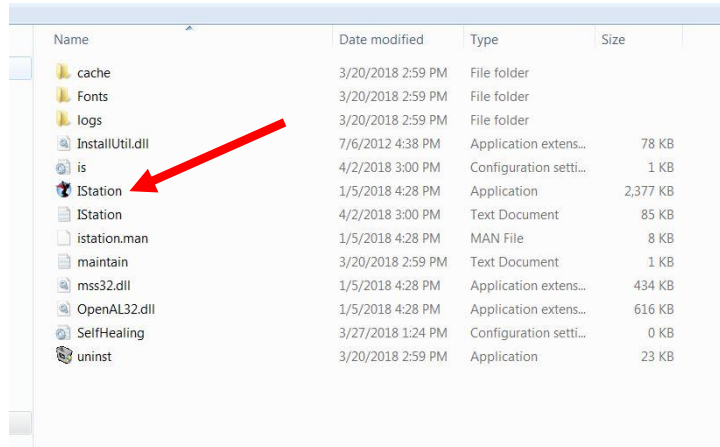
1. Insert Istation Flash Drive into a USB drive.
2. Select "Open Folder to view files".



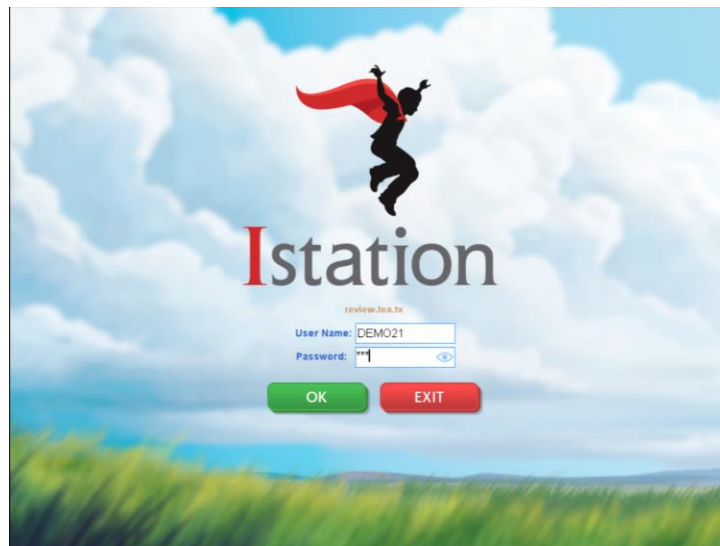
3. Double-click Istation folder to open.



4. Find the Istation icon and double-click to open.



5. This will open the Istation Reading program. Use credentials provided to log in.

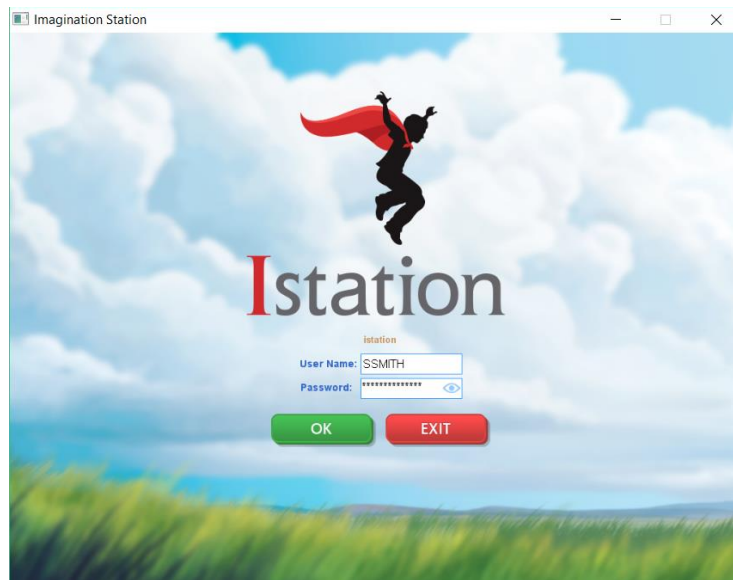


Reviewing Correlation to the TEKS and ELPS Documents

Istation has provided direct links into the Istation Reading Program within each *Correlation to the TEKS and ELPS* documents for each grade. To review the links, reviewers will have to be logged into the program and/or Istation website with their assigned username and password for the links to work correctly. The use of secure username and passwords is to ensure that students & teachers using the program have privacy and security around their data and results produced from using Istation Reading. There are two types of links within the *Correlation to the TEKS and ELPS* documents: Istation Jump Scenes & Istation Teacher Resources.

Using Istation Jump Scene Links:

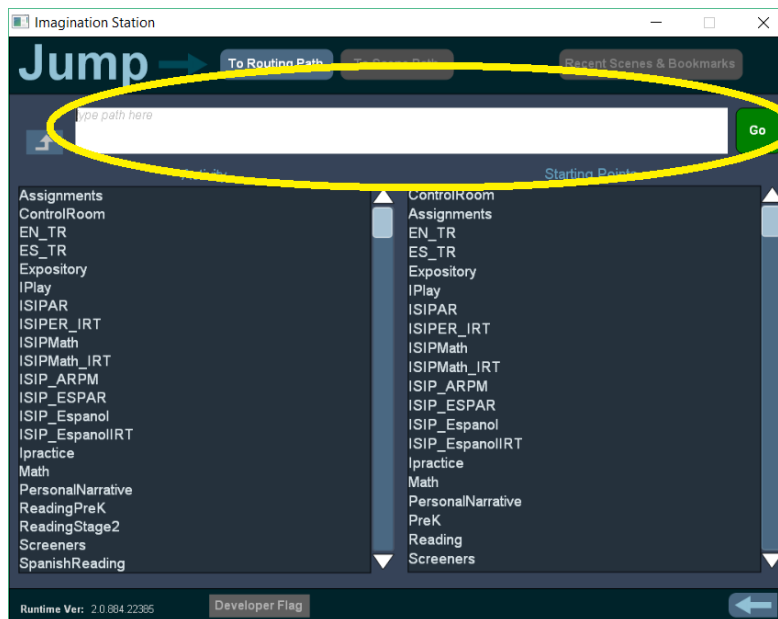
1. Login to the app using the credentials you have been given.



- From the “Control Room” screen, click the “Jump” button [please note that the screen shown here may have additional icons that are not on your screen]

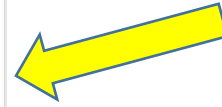


- The circled area is where you will paste your copied jump path.

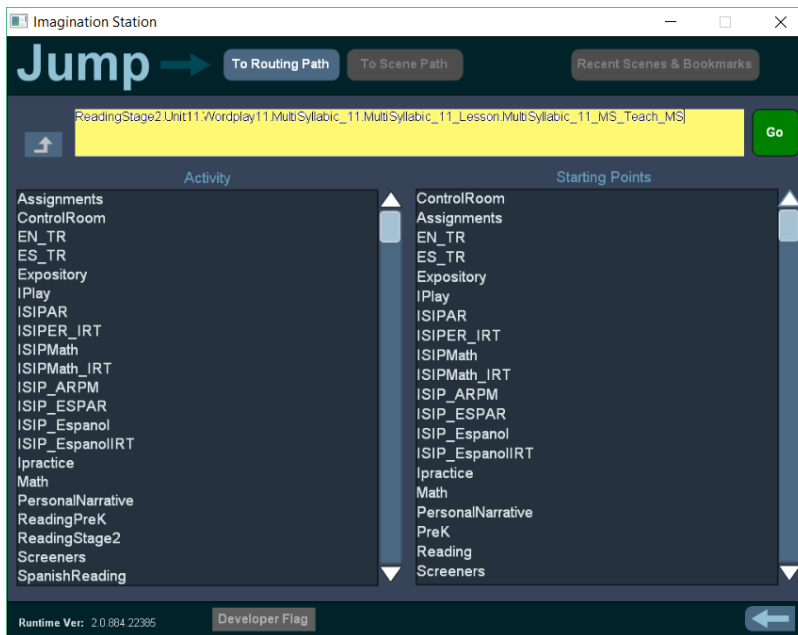


- From the Proclamation 2019 - Correlation to the TEKS and ELPS Excel spreadsheet, copy the Jump Scene path using Control + C if possible.

(Drop-down selection)			
Narrative		narrator teaches about multisyllabic words	ReadingStage2.Unit9.Wordplay9.MultiSyllabic_9.MultiSyllabic_9_Lesson.MultiSyllabic_9_Teach
Activity		students demonstrate knowledge by practicing	ReadingStage2.Unit9.Wordplay9.MultiSyllabic_9.MultiSyllabic_9_Lesson.MultiSyllabic_9_Practice
(Drop-down selection)			



- Use Control + V to paste the path, then click “Go”



- You will be taken directly to the desired lesson

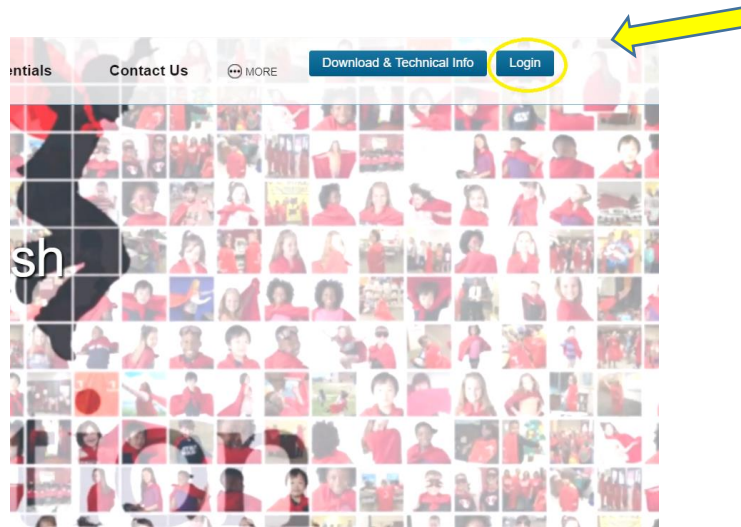


- Click "Stop" when you are finished viewing the lesson to exit to the "Control Room" where you can repeat the process.

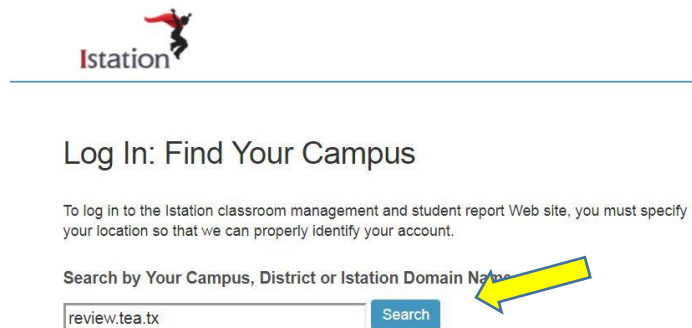


Using Istation Teacher Resources Links:

1. Login to the website at www.istation.com using the credentials you have been given.



2. If this is your first login, you will be directed to choose a campus. Type **review.tea.tx** in the text box and then click “Search.” If this is not your first login, then skip to step 4.





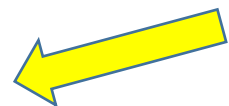
3. Select TEA Review

	Campus	City	State
Select	TEA Review		

4. From the log in screen, enter the username and password credentials you have been given.

5. From the Proclamation 2019 - Correlation to the TEKS and ELPS Excel spreadsheet, click directly on the hyperlinked lesson title.

Narrative		entire lesson	Comprehension Lesson 59: Analyzing Theme in Myths
Activity		entire lesson	Comprehension Lesson 60: Analyzing Theme in Myths
(Drop-down selection)			
(Drop-down selection)			
(Drop-down selection)			
Narrative			
Activity			
(Drop-down selection)			
(Drop-down selection)			
(Drop-down selection)			



- You will be taken directly to the cited lesson. If you are not logged in, you will be prompted to log in and then you will be redirected to the lesson.

Lesson 60 – Literature: The Hero Twins, Grades 4-5

Skill: ANALYZING THEME IN MYTHS

Objectives:

- Students analyze, make inferences, and draw conclusions about theme and genre in different cultural, historical, and contemporary contexts.
- Students summarize and explain the lesson or message of a work of fiction as its theme.
- Students describe the phenomena explained in origin myths from various cultures.

Resource:
Cycle 13 passage, "The Hero Twins"

Features of Myths

Tell students that they will read a myth told by the Ancient Mayans. Review the features and purpose of myths. **A myth is a story that explains an idea or belief of a group of people. Myths may teach what is good and evil or they may explain how something in nature came to exist or why it looks or acts as it does. Myths often include characters with special abilities or powers and miraculous events.** Ask students to look for these features as they read "The Hero Twins."
After students read the story, discuss the features and purpose of the myth. **What special abilities do characters in the myth have?** (The animals and plants understand what people say and they

- Repeat the process for each link. You should not have to login in more than once within each session.