

STATE OF TEXAS ASSESSMENTS OF ACADEMIC READINESS

Summary Report

ENGLISH II

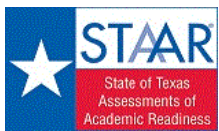
All Students

STATEWIDE

Report Date: FALL 2018
Date of Testing: FALL 2018

Administration Summary			Number of Students Tested	Average Scale Score	Results for Each Reporting Category*																				
					Number	Percent	Did Not Meet		Approaches		Meets		Masters		1		2		3		4		5		6
		#					%	#	%	#	%	#	%	#	%	#	%	#	%	#	%	#	%	#	%
					Number of Points Possible																				
Legend																									
--- = No Data Reported For Fewer Than Five Students																									
All Students		112053			3525	86671	77	25382	23	9907	9	511	0	4.2	53	6.6	51	6.6	51	6.9	43	5.0	56	4.6	51
Male		67090			3487	53382	80	13708	20	4995	7	189	0	4.1	51	6.4	49	6.5	50	6.6	41	4.9	55	4.4	49
Female		44956			3581	33285	74	11671	26	4910	11	322	1	4.5	56	6.8	52	6.8	52	7.4	46	5.1	57	4.9	54
No Information Provided		7			3626	4	57	3	43	2	29	0	0	4.4	55	5.6	43	7.6	58	7.4	46	6.3	70	5.4	60
Hispanic/Latino		73788	3522	57272	78	16516	22	6210	8	241	0	4.3	53	6.6	51	6.6	51	6.9	43	4.9	55	4.6	51		
American Indian or Alaska Native		330	3511	251	76	79	24	25	8	1	0	4.2	52	6.5	50	6.6	51	6.7	42	5.0	56	4.5	50		
Asian		2398	3590	1745	73	653	27	401	17	65	3	4.3	53	6.6	51	6.8	53	7.4	46	5.0	55	5.0	56		
Black or African American		18415	3468	15369	83	3046	17	864	5	17	0	4.1	51	6.2	48	6.2	47	6.6	41	4.9	54	4.5	50		
Native Hawaiian or Other Pacific Islander		175	3457	143	82	32	18	13	7	0	0	3.8	47	6.0	47	6.2	48	6.8	42	4.6	51	4.5	50		
White		15544	3592	10865	70	4679	30	2228	14	165	1	4.4	55	7.0	53	6.8	52	7.3	46	5.4	61	4.9	54		
Two or More Races		1297	3571	953	73	344	27	145	11	18	1	4.3	54	6.8	52	6.7	52	7.3	46	5.3	59	4.8	54		
No Information Provided		106	3571	73	69	33	31	21	20	4	4	4.2	53	6.6	51	7.0	54	6.9	43	5.1	56	4.8	53		
Economically Disadvantaged	Yes	82484	3502	65547	79	16937	21	5875	7	164	0	4.2	52	6.5	50	6.5	50	6.8	42	4.9	54	4.5	51		
	No	29409	3585	21029	72	8380	28	3982	14	332	1	4.4	55	6.9	53	6.8	53	7.3	45	5.3	59	4.8	54		
	No Information Provided	160	3716	95	59	65	41	50	31	15	9	4.5	56	7.4	57	7.6	59	7.8	49	5.6	62	5.1	57		
Title I, Part A	Participants	64314	3524	49888	78	14426	22	5725	9	284	0	4.3	53	6.5	50	6.6	51	6.9	43	4.9	55	4.6	51		
	Nonparticipants	47589	3525	36695	77	10894	23	4134	9	212	0	4.2	52	6.6	51	6.5	50	6.9	43	5.1	56	4.6	51		
	No Information Provided	150	3750	88	59	62	41	48	32	15	10	4.5	56	7.5	58	7.8	60	8.1	50	5.6	62	5.2	58		
Migrant	Yes	1040	3484	838	81	202	19	58	6	3	0	4.2	53	6.3	49	6.4	49	6.5	41	4.7	52	4.6	51		
	No	110831	3525	85722	77	25109	23	9797	9	492	0	4.2	53	6.6	51	6.6	51	6.9	43	5.0	56	4.6	51		
	No Information Provided	182	3701	111	61	71	39	52	29	16	9	4.4	55	7.3	56	7.6	58	7.8	49	5.4	60	5.1	57		
Limited English Proficient	Current LEP	34222	3413	29969	88	4253	12	1009	3	6	0	3.9	49	6.1	47	6.0	46	6.1	38	4.3	48	4.2	46		
	Non-LEP (Monitored 1st Year)	943	3561	705	75	238	25	87	9	0	0	4.5	56	6.6	51	6.9	53	7.2	45	5.1	57	4.7	53		
	Non-LEP (Monitored 2nd Year)	1760	3679	1112	63	648	37	247	14	3	0	4.9	61	7.2	56	7.7	59	8.0	50	5.7	63	5.1	56		
	Non-LEP (Monitored 3rd Year)	1030	3653	673	65	357	35	130	13	0	0	4.8	60	7.1	55	7.5	58	7.8	49	5.5	61	5.1	57		
	Non-LEP (Monitored 4th Year)	647	3784	318	49	329	51	165	26	4	1	5.2	65	7.9	61	8.3	64	8.4	53	6.0	67	5.4	60		
	Other Non-LEP	73269	3568	53783	73	19486	27	8218	11	482	1	4.4	54	6.8	52	6.8	52	7.2	45	5.3	59	4.8	53		
	No Information Provided	182	3699	111	61	71	39	51	28	16	9	4.5	56	7.3	56	7.7	59	7.6	48	5.5	61	5.0	56		
Bilingual	Participants	118	3872	55	47	63	53	41	35	7	6	5.4	67	8.1	62	8.6	66	8.7	55	6.1	68	5.9	65		
	Nonparticipants	111742	3524	86497	77	25245	23	9812	9	489	0	4.2	53	6.6	51	6.6	51	6.9	43	5.0	56	4.6	51		
	No Information Provided	193	3698	119	62	74	38	54	28	15	8	4.5	56	7.3	56	7.6	59	7.8	49	5.5	61	5.1	56		
ESL	Participants	31852	3408	27938	88	3914	12	926	3	6	0	3.9	49	6.1	47	6.0	46	6.1	38	4.3	48	4.2	46		
	Nonparticipants	80020	3570	58624	73	21396	27	8928	11	490	1	4.4	55	6.8	52	6.8	52	7.2	45	5.3	59	4.8	53		
	No Information Provided	181	3708	109	60	72	40	53	29	15	8	4.5	56	7.3	56	7.7	59	7.9	50	5.5	61	5.1	57		
Special Education	Yes	15948	3344	14451	91	1497	9	355	2	5	0	3.5	44	5.9	46	5.6	43	5.5	34	4.3	48	3.9	43		
	No	95938	3554	72124	75	23814	25	9500	10	491	1	4.4	55	6.7	51	6.8	52	7.1	45	5.1	57	4.7	53		
	No Information Provided	167	3727	96	57	71	43	52	31	15	9	4.5	56	7.4	57	7.8	60	7.9	49	5.6	62	5.2	58		
Gifted/Talented	Participants	1385	4285	251	18	1134	82	996	72	242	17	6.2	78	9.6	74	10.1	78	11.2	70	7.4	83	7.2	79		
	Nonparticipants	110501	3515	86324	78	24177	22	8859	8	254	0	4.2	53	6.5	50	6.5	50	6.8	43	5.0	55	4.6	51		
	No Information Provided	167	3738	96	57	71	43	52	31	15	9	4.5	56	7.6	58	7.8	60	8.0	50	5.6	62	5.3	58		
At-Risk	Yes	96925	3485	78542	81	18383	19	5491	6	40	0	4.1	52	6.4	49	6.4	49	6.7	42	4.8	54	4.5	50		
	No	14988	3776	8052	54	6936	46	4367	29	456	3	5.0	62	7.6	59	7.9	61	8.4	52	6.0	67	5.5	61		
	No Information Provided	140	3791	77	55	63	45	49	35	15	11	4.7	59	7.6	58	8.0	62	8.3	52	5.8	64	5.3	59		
Career/Technical Education	Participants	84478	3527	65506	78	18972	22	7003	8	273	0	4.3	53	6.6	51	6.6	51	6.9	43	5.0	56	4.6	51		
	Nonparticipants	27471	3515	21116	77	6355	23	2858	10	223	1	4.1	52	6.5	50	6.5	50	6.9	43	4.9	55	4.6	51		
	No Information Provided	104	3882	49	47	55	53	46	44	15	14	5.0	63	8.1	63	8.5	66	8.8	55	6.0	66	5.6	63		

* Students who took the paper with embedded supports version of the test are not included in the reporting category results.



STATE OF TEXAS ASSESSMENTS OF ACADEMIC READINESS
Constructed Responses Summary Report
ENGLISH II
All Students

STATEWIDE

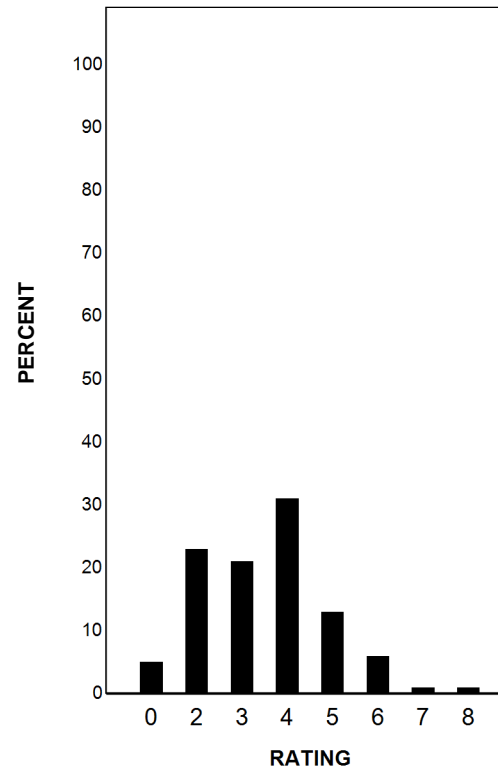
Report Date: FALL 2018
Date of Testing: FALL 2018

--- = No Data Reported For Fewer Than Five Students

Written Composition Rating Summary*

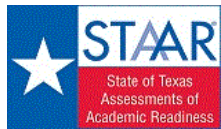
Persuasive Composition

Rating	#	%
0	5273	5
2	25356	23
3	23738	21
4	34999	31
5	14188	13
6	6505	6
7	1392	1
8	588	1
Total	112039	100



Each composition has been scored independently by two readers. The written composition rating of 0-8 represents the summation of these scores.

* Students who took the paper with embedded supports version of the test are not included in this report.



STATE OF TEXAS ASSESSMENTS OF ACADEMIC READINESS

Summary Report

ENGLISH II

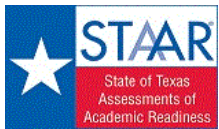
First-Time Tested Students

STATEWIDE

Report Date: FALL 2018
Date of Testing: FALL 2018

Administration Summary			Number of Students Tested	Average Scale Score	Did Not Meet				Approaches				Meets				Masters				Results for Each Reporting Category*											
																					Number Percent		1		2		3		4		5	
					# %		# %		# %		# %		# %		# %		# %		Understanding/ Analysis Across Genres		Understanding/ Analysis of Literary Texts		Understanding/ Analysis of Informational Texts		Composition		Revision		Editing			
Legend					# %		# %		# %		# %		# %		# %		# %		8		13		13		16		9		9			
--- = No Data Reported For Fewer Than Five Students					# %		# %		# %		# %		# %		# %		# %		# %		# %		# %		# %		# %		# %			
All Students			12819	3852	5491	43	7328	57	5235	41	507	4	5.2	65	8.1	62	8.4	65	8.7	54	6.2	68	5.8	64								
Male			6532	3769	3156	48	3376	52	2297	35	188	3	5.0	63	7.7	59	8.0	62	8.0	50	6.0	66	5.5	61								
Female			6280	3939	2331	37	3949	63	2936	47	319	5	5.4	68	8.5	65	8.7	67	9.3	58	6.3	70	6.1	67								
No Information Provided			7	3626	4	57	3	43	2	29	0	0	4.4	55	5.6	43	7.6	58	7.4	46	6.3	70	5.4	60								
Hispanic/Latino			8689	3823	3878	45	4811	55	3296	38	238	3	5.2	65	7.9	61	8.3	64	8.5	53	6.0	67	5.7	63								
American Indian or Alaska Native			30	3871	13	43	17	57	14	47	1	3	5.4	68	7.7	59	8.8	68	8.9	55	6.2	69	5.6	63								
Asian			435	4213	96	22	339	78	310	71	65	15	6.0	75	9.2	71	9.7	75	11.1	70	7.0	78	7.0	78								
Black or African American			1154	3600	731	63	423	37	238	21	17	1	4.5	56	6.9	53	6.9	53	7.2	45	5.5	61	5.0	55								
Native Hawaiian or Other Pacific Islander			8	3626	4	50	4	50	2	25	0	0	4.8	59	7.3	56	7.3	56	6.5	41	5.6	63	5.4	60								
White			2256	4019	668	30	1588	70	1264	56	164	7	5.6	69	8.9	68	9.1	70	9.6	60	6.8	76	6.3	70								
Two or More Races			194	3956	70	36	124	64	94	48	18	9	5.3	67	8.6	66	8.8	67	9.5	59	6.6	74	6.0	66								
No Information Provided			53	3778	31	58	22	42	17	32	4	8	4.7	59	7.5	58	8.0	62	8.4	53	5.8	64	5.5	61								
Economically Disadvantaged			Yes	8540	3756	4260	50	4280	50	2756	32	163	2	5.0	63	7.6	59	8.0	61	8.1	50	5.8	65	5.5	61							
			No	4180	4047	1188	28	2992	72	2431	58	329	8	5.7	71	8.9	69	9.2	71	9.9	62	6.8	76	6.4	71							
			No Information Provided	99	3949	43	43	56	57	48	15	15	5.2	65	8.3	64	9.0	69	9.3	58	6.4	71	5.8	65								
Title I, Part A			Participants	8626	3835	3801	44	4825	56	3370	39	284	3	5.2	65	8.0	61	8.4	64	8.6	54	6.1	67	5.7	63							
			Nonparticipants	4096	3885	1647	40	2449	60	1819	44	208	5	5.3	66	8.3	64	8.4	65	8.9	55	6.4	71	5.9	66							
			No Information Provided	97	3958	43	44	54	56	46	15	15	5.1	64	8.3	64	9.0	69	9.4	59	6.3	70	5.8	64								
Migrant			Yes	135	3678	72	53	63	47	35	26	3	2	4.8	60	7.2	56	7.6	58	7.8	49	5.4	60	5.1	56							
			No	12573	3854	5368	43	7205	57	5150	41	488	4	5.2	65	8.1	62	8.4	65	8.7	54	6.2	68	5.8	64							
			No Information Provided	111	3910	51	46	60	54	50	45	16	14	5.1	63	8.1	63	8.8	67	9.2	57	6.2	68	5.7	64							
Limited English Proficient			Current LEP	2354	3489	1815	77	539	23	255	11	6	0	4.2	53	6.4	49	6.6	51	6.5	40	4.6	51	4.6	51							
			Non-LEP (Monitored 1st Year)	214	3720	118	55	96	45	45	21	0	0	5.2	65	7.3	56	7.9	61	8.1	51	5.7	63	5.4	60							
			Non-LEP (Monitored 2nd Year)	422	3856	160	38	262	62	144	34	3	1	5.4	67	8.1	63	8.8	68	8.8	55	6.3	69	5.8	64							
			Non-LEP (Monitored 3rd Year)	154	3898	51	33	103	67	69	45	0	0	5.7	71	8.0	62	9.0	69	9.3	58	6.2	69	6.1	68							
			Non-LEP (Monitored 4th Year)	280	3970	69	25	211	75	133	48	4	1	5.8	73	8.7	67	9.4	72	9.4	59	6.6	73	6.0	67							
			Other Non-LEP	9285	3942	3227	35	6058	65	4540	49	478	5	5.5	68	8.5	65	8.8	68	9.2	58	6.5	73	6.1	67							
			No Information Provided	110	3913	51	46	59	54	49	45	16	15	5.2	64	8.1	63	8.9	68	9.0	56	6.2	69	5.7	64							
Bilingual			Participants	61	4149	11	18	50	82	37	61	7	11	6.0	75	9.2	71	10.1	78	10.2	64	7.0	78	6.7	75							
			Nonparticipants	12649	3850	5433	43	7216	57	5146	41	485	4	5.2	65	8.1	62	8.4	64	8.7	54	6.1	68	5.8	64							
			No Information Provided	109	3919	47	43	62	57	52	48	15	14	5.2	64	8.1	62	8.9	68	9.2	58	6.3	70	5.7	64							
ESL			Participants	2282	3485	1778	78	504	22	234	10	6	0	4.2	53	6.4	49	6.5	50	6.4	40	4.5	51	4.5	50							
			Nonparticipants	10431	3932	3668	35	6763	65	4950	47	486	5	5.4	68	8.4	65	8.8	68	9.2	57	6.5	72	6.0	67							
			No Information Provided	106	3925	45	42	61	58	51	48	15	14	5.1	64	8.2	63	8.9	69	9.2	57	6.2	69	5.7	64							
Special Education			Yes	1205	3368	1006	83	199	17	91	8	5	0	3.6	45	6.0	46	5.8	45	5.5	34	4.5	50	4.1	45							
			No	11508	3902	4440	39	7068	61	5094	44	487	4	5.4	68	8.3	64	8.6	67	9.0	56	6.3	70	5.9	66							
			No Information Provided	106	3928	45	42	61	58	50	47	15	14	5.1	64	8.2	63	8.9	69	9.2	57	6.2	69	5.8	65							
Gifted/Talented			Participants	1026	4499	38	4	988	96	936	91	241	23	6.7	84	10.4	80	11.1	86	12.3	77	8.0	89	7.8	86							
			Nonparticipants	11685	3795	5405	46	6280	54	4250	36	251	2	5.1	64	7.9	60	8.1	63	8.3	52	6.0	67	5.6	62							
			No Information Provided	108	3920	48	44	60	56	49	45	15	14	5.1	64	8.2	63	8.8	68	9.2	57	6.2	69	5.8	64							
At-Risk			Yes	7556	3635	4553	60	3003	40	1675	22	37	0	4.6	58	7.2	55	7.3	57	7.4	46	5.5	61	5.1	56							
			No	5169	4168	898	17	4271	83	3513	68	455	9	6.1	76	9.4	72	9.9	76	10.6	66	7.2	80	6.8	75							
			No Information Provided	94	3989	40	43	54	57	47	50	15	16	5.3	66	8.4	65	9.1	70	9.5	59	6.4	71	5.9	65							
Career/Technical Education			Participants	8467	3849	3599	43	4868	57	3407	40	271	3	5.3	66	8.0	62	8.5	65	8.6	54	6.2	68	5.8	64							
			Nonparticipants	4265	3855	1858	44	2407	56	1783	42	221	5	5.1	64	8.1	62	8.2	63	8.8	55	6.1	68	5.7	64							
			No Information Provided	87	3985	34	39	53	61	45	52	15	17	5.3	67	8.5	66	9.1	70	9.6	60	6.3	70	5.9	66							

* Students who took the paper with embedded supports version of the test are not included in the reporting category results.



STATE OF TEXAS ASSESSMENTS OF ACADEMIC READINESS
Constructed Responses Summary Report
ENGLISH II
First-Time Tested Students

STATEWIDE

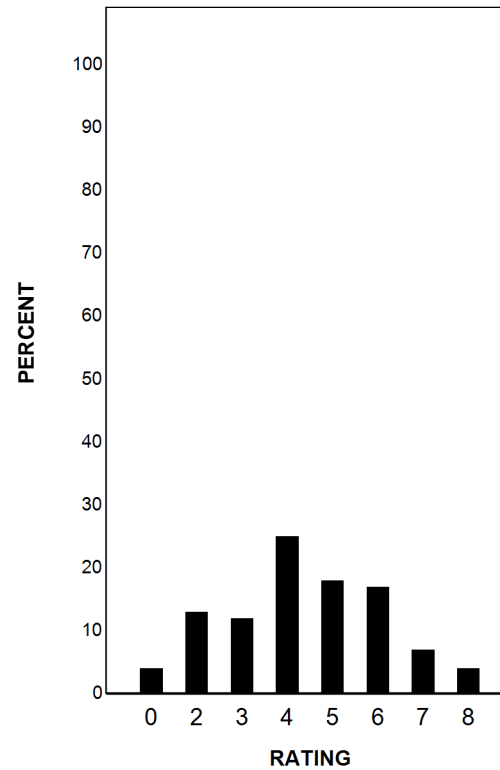
Report Date: FALL 2018
Date of Testing: FALL 2018

--- = No Data Reported For Fewer Than Five Students

Written Composition Rating Summary*

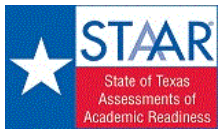
Persuasive Composition

Rating	#	%
0	530	4
2	1727	13
3	1520	12
4	3167	25
5	2288	18
6	2150	17
7	921	7
8	513	4
Total	12816	100



Each composition has been scored independently by two readers. The written composition rating of 0-8 represents the summation of these scores.

* Students who took the paper with embedded supports version of the test are not included in this report.



STATE OF TEXAS ASSESSMENTS OF ACADEMIC READINESS
Constructed Responses Summary Report
ENGLISH II
Retested Students

STATEWIDE

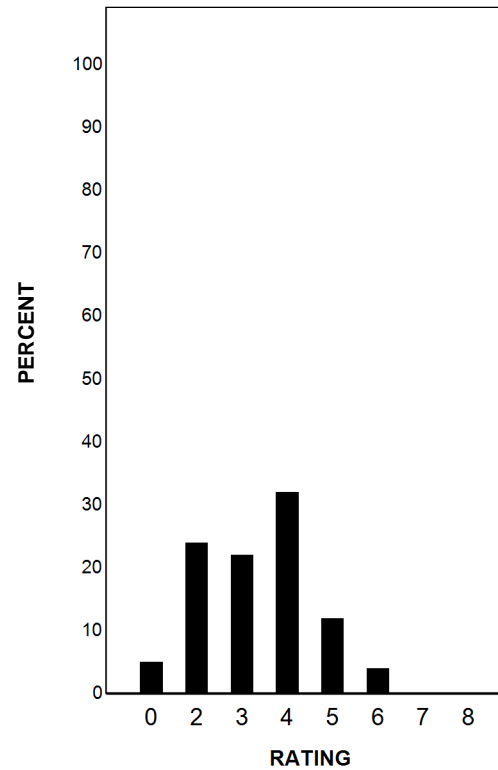
Report Date: FALL 2018
Date of Testing: FALL 2018

--- = No Data Reported For Fewer Than Five Students

Written Composition Rating Summary*

Persuasive Composition

Rating	#	%
0	4743	5
2	23629	24
3	22218	22
4	31832	32
5	11900	12
6	4355	4
7	471	0
8	75	0
Total	99223	100



Each composition has been scored independently by two readers. The written composition rating of 0-8 represents the summation of these scores.

* Students who took the paper with embedded supports version of the test are not included in this report.