

STATE OF TEXAS ASSESSMENTS OF ACADEMIC READINESS

Summary Report

ENGLISH I

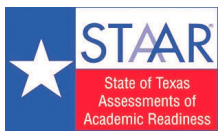
All Students

STATEWIDE

Report Date: SPRING 2019
Date of Testing: SPRING 2019

Administration Summary			Number of Students Tested	Average Scale Score	Results for Each Reporting Category*																					
					Number	Percent	Did Not Meet		Approaches		Meets		Masters		1		2		3		4		5		6	
		#					%	#	%	#	%	#	%	Understanding/Analysis Across Genres		Understanding/Analysis of Literary Texts		Understanding/Analysis of Informational Texts		Composition		Revision		Editing		
		Number of Points Possible																								
		8			13				13				16				9		9							
Number of Points Scored																										
		#			%	#	%	#	%	#	%	#	%	#	%	#	%	#	%	#	%	#	%	#	%	
All Students					467850	3978	170905	37	296945	63	231118	49	55968	12	4.8	60	8.6	66	9.1	70	8.5	53	5.9	66	5.8	65
Male					251180	3878	108624	43	142556	57	106116	42	21014	8	4.6	57	8.1	62	8.6	66	7.8	49	5.7	63	5.5	61
Female					216654	4093	62277	29	154377	71	124993	58	34951	16	5.1	64	9.1	70	9.5	73	9.3	58	6.2	69	6.2	69
No Information Provided			16	4130	4	25	12	75	9	56	3	19	5.1	64	9.4	73	8.7	67	9.6	60	6.8	76	6.2	69		
Hispanic/Latino			259230	3878	109639	42	149591	58	109319	42	18605	7	4.6	57	8.1	62	8.6	66	8.0	50	5.7	63	5.5	61		
American Indian or Alaska Native			1485	3954	561	38	924	62	736	50	152	10	4.8	60	8.5	65	9.0	69	8.3	52	5.9	65	5.7	64		
Asian			18152	4494	2539	14	15613	86	14497	80	7699	42	6.1	76	10.4	80	10.7	83	11.2	70	7.2	80	7.4	82		
Black or African American			64789	3816	30863	48	33926	52	23522	36	3750	6	4.3	54	7.8	60	8.4	65	7.7	48	5.3	59	5.3	59		
Native Hawaiian or Other Pacific Islander			712	3936	284	40	428	60	323	45	80	11	4.6	58	8.3	64	8.7	67	8.6	54	5.7	63	5.8	64		
White			113714	4201	24491	22	89223	78	76684	67	23822	21	5.5	68	9.7	74	10.2	78	9.5	59	6.7	74	6.5	73		
Two or More Races			9308	4163	2271	24	7037	76	5902	63	1843	20	5.3	67	9.5	73	9.9	76	9.3	58	6.5	72	6.4	71		
No Information Provided			460	3708	257	56	203	44	135	29	17	4	4.1	51	7.3	56	7.8	60	7.0	43	5.1	57	5.0	56		
Economically Disadvantaged			Yes 288999	3830	132626	46	156373	54	110100	38	15930	6	4.4	55	7.9	60	8.4	64	7.8	49	5.5	61	5.3	59		
			No 178423	4219	38012	21	140411	79	120918	68	40026	22	5.5	69	9.7	75	10.2	78	9.7	60	6.7	74	6.6	73		
			No Information Provided 428	3604	267	62	161	38	100	23	12	3	3.8	47	6.6	51	7.1	55	6.1	38	4.8	53	4.8	53		
Title I, Part A			Participants 224816	3875	96977	43	127839	57	93704	42	16736	7	4.6	57	8.1	62	8.6	66	8.0	50	5.6	62	5.5	61		
			Nonparticipants 242529	4074	73628	30	168901	70	137281	57	39216	16	5.1	64	9.0	69	9.5	73	9.0	56	6.2	69	6.1	68		
			No Information Provided 505	3639	300	59	205	41	133	26	16	3	3.9	48	6.9	53	7.3	56	6.4	40	5.0	56	4.9	55		
Migrant			Yes 2459	3683	1446	59	1013	41	656	27	48	2	4.0	50	7.0	54	7.4	57	7.1	45	5.0	55	4.8	53		
			No 464684	3980	168993	36	295691	64	230307	50	55904	12	4.8	60	8.6	66	9.1	70	8.5	53	5.9	66	5.8	65		
			No Information Provided 707	3547	466	66	241	34	155	22	16	2	3.5	44	6.3	49	6.8	52	5.7	36	4.7	52	4.6	51		
Limited English Proficient			Current LEP 84111	3557	59919	71	24192	29	11439	14	478	1	3.6	45	6.1	47	6.6	51	6.5	40	4.6	51	4.5	50		
			Non-LEP (Monitored 1st Year) 5523	3932	1763	32	3760	68	2566	46	259	5	4.8	60	8.5	65	9.1	70	8.4	53	6.0	66	5.7	63		
			Non-LEP (Monitored 2nd Year) 8236	4061	1559	19	6677	81	5004	61	504	6	5.2	65	9.3	71	9.8	76	9.0	56	6.4	71	6.1	68		
			Non-LEP (Monitored 3rd Year) 8140	4148	1141	14	6999	86	5694	70	775	10	5.5	69	9.8	75	10.3	79	9.4	59	6.7	74	6.4	71		
			Non-LEP (Monitored 4th Year) 8701	4147	1288	15	7413	85	5948	68	882	10	5.5	68	9.7	75	10.3	79	9.3	58	6.7	74	6.4	71		
			Other Non-LEP 352485	4070	104842	30	247643	70	200297	57	53047	15	5.1	64	9.1	70	9.6	74	8.9	56	6.2	69	6.1	68		
			No Information Provided 654	3636	393	60	261	40	170	26	23	4	3.8	48	6.8	52	7.3	56	6.4	40	5.0	55	4.8	54		
Bilingual			Participants 920	4081	240	26	680	74	560	61	124	13	5.1	64	9.1	70	9.5	73	9.2	58	6.3	70	6.3	70		
			Nonparticipants 466268	3978	170260	37	296008	63	230393	49	55827	12	4.8	60	8.6	66	9.1	70	8.5	53	5.9	66	5.8	65		
			No Information Provided 662	3618	405	61	257	39	165	25	17	3	3.8	47	6.7	51	7.2	55	6.3	40	4.9	55	4.8	53		
ESL			Participants 79886	3552	57231	72	22655	28	10701	13	431	1	3.6	45	6.1	47	6.6	51	6.4	40	4.6	51	4.4	49		
			Nonparticipants 387310	4066	113279	29	274031	71	220249	57	55518	14	5.1	64	9.1	70	9.6	74	8.9	56	6.2	69	6.1	68		
			No Information Provided 654	3625	395	60	259	40	168	26	19	3	3.8	47	6.8	52	7.2	56	6.3	40	5.0	55	4.8	53		
Special Education			Yes 48142	3454	39128	81	9014	19	4050	8	281	1	3.2	40	5.7	44	6.1	47	5.6	35	4.2	46	4.0	44		
			No 419253	4038	131499	31	287754	69	226960	54	55674	13	5.0	63	8.9	68	9.4	72	8.8	55	6.1	68	6.0	67		
			No Information Provided 455	3620	278	61	177	39	108	24	13	3	3.7	46	6.8	52	7.3	56	6.4	40	4.9	55	4.9	54		
Gifted/Talented			Participants 35790	4701	659	2	35131	98	34166	95	18910	53	6.8	85	11.6	89	11.9	91	11.7	73	7.9	88	8.0	89		
			Nonparticipants 431526	3918	169920	39	261606	61	196817	46	37043	9	4.7	58	8.3	64	8.8	68	8.2	51	5.8	64	5.6	63		
			No Information Provided 534	3630	326	61	208	39	135	25	15	3	3.8	47	6.8	52	7.3	56	6.4	40	4.9	55	4.8	54		
At-Risk			Yes 280231	3702	155259	55	124972	45	73832	26	4364	2	4.0	50	7.2	55	7.7	59	7.2	45	5.1	57	4.9	55		
			No 187227	4391	15412	8	171815	92	157185	84	51594	28	6.1	76	10.6	82	11.1	85	10.5	65	7.2	80	7.1	79		
			No Information Provided 392	3631	234	60	158	40	101	26	10	3	3.8	48	6.7	52	7.3	56	6.4	40	4.9	54	4.9	54		
Career/Technical Education			Participants 328959	3964	121600	37	207359	63	158961	48	35125	11	4.8	60	8.5	65	9.0	69	8.4	53	5.9	66	5.8	64		
			Nonparticipants 138388	4013	48980	35	89408	65	72046	52	20834	15	4.9	61	8.7	67	9.1	70	8.7	54	6.0	67	5.9	66		
			No Information Provided 503	3543	325	65	178	35	111	22	9	2	3.6	45	6.4	49	6.7	52	5.5	35	4.7	52	4.6	51		

* Results for students who took the test with the Braille, American Sign Language videos accommodation, or the paper STAAR with embedded supports are not included in the reporting category results.



STATE OF TEXAS ASSESSMENTS OF ACADEMIC READINESS
Constructed Responses Summary Report
ENGLISH I
All Students

STATEWIDE

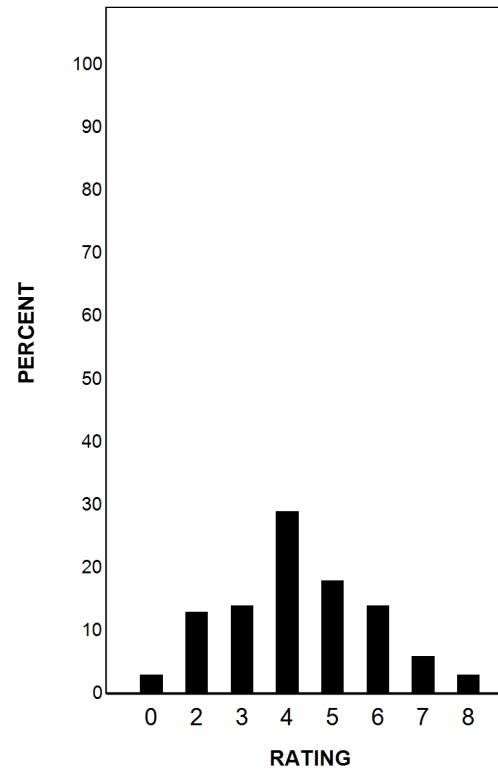
Report Date: SPRING 2019
Date of Testing: SPRING 2019

--- = No Data Reported For Fewer Than Five Students

Written Composition Rating Summary*

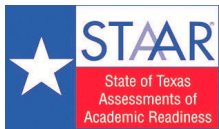
Expository Composition

Rating	#	%
0	13248	3
2	59361	13
3	67493	14
4	134837	29
5	84300	18
6	67287	14
7	27965	6
8	13115	3
Total	467606	100



Each composition has been scored independently by two readers. The written composition rating of 0-8 represents the summation of these scores.

* Results for students who took the test with the Braille, American Sign Language videos accommodation, or the paper STAAR with embedded supports are not included in this report.



STATE OF TEXAS ASSESSMENTS OF ACADEMIC READINESS

Summary Report

ENGLISH I

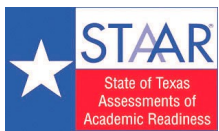
First-Time Tested Students

STATEWIDE

Report Date: SPRING 2019
Date of Testing: SPRING 2019

Administration Summary			Number of Students Tested	Average Scale Score	Did Not Meet		Approaches		Meets		Masters		Results for Each Reporting Category*																					
													Number	Percent	1		2		3		4		5		6									
Students Tested	373653	95											Understanding/ Analysis Across Genres	Understanding/ Analysis of Literary Texts	Understanding/ Analysis of Informational Texts	Composition	Revision	Editing	Number of Points Possible															
																			8		13		13		16		9		9					
Legend													Number of Points Scored																					
--- = No Data Reported For Fewer Than Five Students													#	%	#	%	#	%	#	%	#	%	#	%	#	%	#	%	#	%	#	%		
All Students													373653	4097	97135	26	276518	74	225348	60	55954	15	5.2	65	9.2	71	9.7	75	9.0	56	6.3	71	6.2	69
Male													191093	4004	60628	32	130465	68	102667	54	21007	11	5.0	62	8.9	68	9.4	72	8.3	52	6.1	68	5.9	66
Female													182544	4195	36503	20	146041	80	122672	67	34944	19	5.4	68	9.6	74	10.1	78	9.7	61	6.6	73	6.5	72
No Information Provided													16	4130	4	25	12	75	9	56	3	19	5.1	64	9.4	73	8.7	67	9.6	60	6.8	76	6.2	69
Hispanic/Latino			196700	3997	60521	31	136179	69	105671	54	18599	9	5.0	62	8.8	68	9.3	72	8.5	53	6.1	68	5.9	65										
American Indian or Alaska Native			1192	4066	333	28	859	72	714	60	152	13	5.1	64	9.2	70	9.7	74	8.8	55	6.3	70	6.1	68										
Asian			16807	4574	1456	9	15351	91	14423	86	7699	46	6.3	79	10.8	83	11.1	86	11.6	72	7.5	83	7.6	85										
Black or African American			47307	3936	16965	36	30342	64	22535	48	3749	8	4.7	59	8.5	66	9.1	70	8.2	51	5.8	64	5.7	64										
Native Hawaiian or Other Pacific Islander			557	4064	158	28	399	72	316	57	80	14	5.0	62	9.0	69	9.4	72	9.1	57	6.2	69	6.3	70										
White			102537	4276	16060	16	86477	84	75758	74	23816	23	5.7	71	10.1	78	10.6	81	9.8	61	6.9	77	6.8	75										
Two or More Races			8229	4245	1484	18	6745	82	5811	71	1842	22	5.6	70	9.9	76	10.4	80	9.7	61	6.8	75	6.7	74										
No Information Provided			324	3788	158	49	166	51	120	37	17	5	4.3	54	7.6	59	8.2	63	7.3	46	5.5	61	5.4	60										
Economically Disadvantaged			Yes	215508	3943	74477	35	141031	65	105885	49	15924	7	4.8	60	8.6	66	9.1	70	8.2	52	5.9	66	5.7	64									
			No	157831	4309	22475	14	135356	86	119375	76	40018	25	5.8	72	10.2	78	10.7	82	10.1	63	7.0	77	6.9	76									
			No Information Provided	314	3654	183	58	131	42	88	12	4	3.9	48	6.9	53	7.5	57	6.2	38	5.0	55	5.0	55										
Title I, Part A			Participants	168956	4000	52662	31	116294	69	90590	54	16730	10	5.0	62	8.8	68	9.3	72	8.5	53	6.1	67	5.9	66									
			Nonparticipants	204327	4179	44275	22	160052	78	134637	66	39208	19	5.4	68	9.6	74	10.1	78	9.4	59	6.6	73	6.4	72									
			No Information Provided	370	3695	198	54	172	46	121	33	16	4	4.0	50	7.2	56	7.7	59	6.6	41	5.3	59	5.1	57									
Migrant			Yes	1509	3823	656	43	853	57	611	40	48	3	4.5	57	7.9	61	8.3	64	7.7	48	5.5	61	5.3	59									
			No	371617	4099	96153	26	275464	74	224599	60	55890	15	5.2	65	9.2	71	9.7	75	9.0	56	6.4	71	6.2	69									
			No Information Provided	527	3571	326	62	201	38	138	26	16	3	3.7	46	6.5	50	7.0	54	5.6	35	4.8	53	4.7	52									
Limited English Proficient			Current LEP	51028	3618	32108	63	18920	37	10272	20	476	1	3.8	48	6.6	51	7.1	55	6.6	41	4.9	54	4.7	52									
			Non-LEP (Monitored 1st Year)	4873	3986	1276	26	3597	74	2516	52	259	5	5.0	62	8.9	68	9.5	73	8.6	54	6.2	68	5.9	65									
			Non-LEP (Monitored 2nd Year)	6748	4147	689	10	6059	90	4797	71	504	7	5.5	69	9.8	75	10.3	80	9.4	59	6.7	75	6.4	72									
			Non-LEP (Monitored 3rd Year)	7439	4194	718	10	6721	90	5597	75	774	10	5.6	70	10.0	77	10.5	81	9.6	60	6.8	76	6.5	72									
			Non-LEP (Monitored 4th Year)	8161	4180	965	12	7196	88	5884	72	882	11	5.6	70	9.9	76	10.5	80	9.5	59	6.8	75	6.5	72									
			Other Non-LEP	294928	4177	61123	21	233805	79	196129	67	53036	18	5.4	68	9.7	74	10.1	78	9.4	59	6.6	73	6.5	72									
			No Information Provided	476	3698	256	54	220	46	153	32	23	5	4.0	50	7.2	56	7.7	60	6.6	41	5.2	58	5.0	56									
Bilingual			Participants	828	4144	170	21	658	79	555	67	124	15	5.3	67	9.4	73	9.9	76	9.5	59	6.5	72	6.5	72									
			Nonparticipants	372351	4098	96704	26	275647	74	224644	60	55813	15	5.2	65	9.2	71	9.7	75	9.0	56	6.4	71	6.2	69									
			No Information Provided	474	3670	261	55	213	45	149	31	17	4	4.0	50	7.1	54	7.5	58	6.4	40	5.2	57	4.9	54									
ESL			Participants	48738	3613	30895	63	17843	37	9654	20	429	1	3.8	47	6.5	50	7.1	54	6.6	41	4.8	54	4.7	52									
			Nonparticipants	324448	4171	65988	20	258460	80	215543	66	55506	17	5.4	68	9.6	74	10.1	78	9.4	59	6.6	73	6.4	72									
			No Information Provided	467	3679	252	54	215	46	151	32	19	4	4.0	50	7.2	55	7.6	58	6.4	40	5.2	58	4.9	55									
Special Education			Yes	31608	3492	24226	77	7382	23	3740	12	280	1	3.4	42	6.0	46	6.4	49	5.7	36	4.3	48	4.1	46									
			No	341732	4154	72736	21	268996	79	221514	65	55661	16	5.4	67	9.5	73	10.0	77	9.3	58	6.5	73	6.4	71									
			No Information Provided	313	3672	173	55	140	45	94	30	13	4	3.9	48	7.2	55	7.7	59	6.5	41	5.1	57	5.1	57									
Gifted/Talented			Participants	35542	4708	518	1	35024	99	34135	96	18910	53	6.8	85	11.6	89	11.9	92	11.8	74	7.9	88	8.0	89									
			Nonparticipants	337727	4034	96406	29	241321	71	191092	57	37029	11	5.0	63	9.0	69	9.5	73	8.7	55	6.2	69	6.0	67									
			No Information Provided	384	3683	211	55	173	45	121	32	15	4	4.0	50	7.1	55	7.7	59	6.5	41	5.2	57	5.1	56									
At-Risk			Yes	191243	3796	85155	45	106088	55	68591	36	4352	2	4.3	54	7.8	60	8.3	64	7.5	47	5.5	61	5.3	59									
			No	182116	4415	11817	6	170299	94	156668	86	51592	28	6.1	77	10.8	83	11.2	86	10.6	66	7.3	81	7.2	80									
			No Information Provided	294	3676	163	55	131	45	89	30	10	3	3.9	49	7.0	54	7.7	59	6.6	41	5.1	57	5.1	56									
Career/Technical Education			Participants	257584	4089	66044	26	191540	74	154594	60	35114	14	5.2	65	9.2	71	9.8	75	9.0	56	6.3	70	6.2	69									
			Nonparticipants	115653	4118	30831	27	84822	73	70651	61	20831	18	5.2	65	9.2	71	9.7	75	9.1	57	6.4	71	6.3	70									
			No Information Provided	416	3544	260	63	156	38	103	25	9	2	3.7	46	6.4	49	6.8	52	5.4	34	4.7	52	4.6	51									

* Results for students who took the test with the Braille, American Sign Language videos accommodation, or the paper STAAR with embedded supports are not included in the reporting category results.



STATE OF TEXAS ASSESSMENTS OF ACADEMIC READINESS
Constructed Responses Summary Report
ENGLISH I
First-Time Tested Students

STATEWIDE

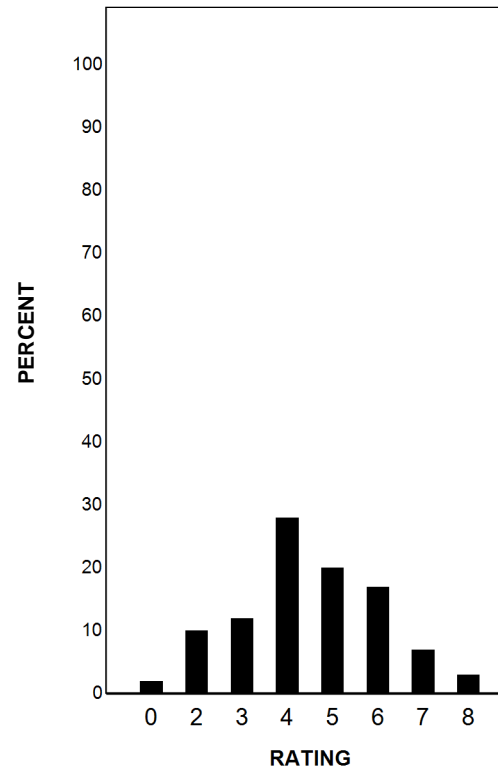
Report Date: SPRING 2019
 Date of Testing: SPRING 2019

--- = No Data Reported For Fewer Than Five Students

Written Composition Rating Summary*

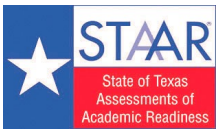
Expository Composition

Rating	#	%
0	8782	2
2	36078	10
3	43847	12
4	104354	28
5	74946	20
6	64813	17
7	27633	7
8	13067	3
Total	373520	100



Each composition has been scored independently by two readers. The written composition rating of 0-8 represents the summation of these scores.

* Results for students who took the test with the Braille, American Sign Language videos accommodation, or the paper STAAR with embedded supports are not included in this report.



STATE OF TEXAS ASSESSMENTS OF ACADEMIC READINESS
Constructed Responses Summary Report
ENGLISH I
Retested Students

STATEWIDE

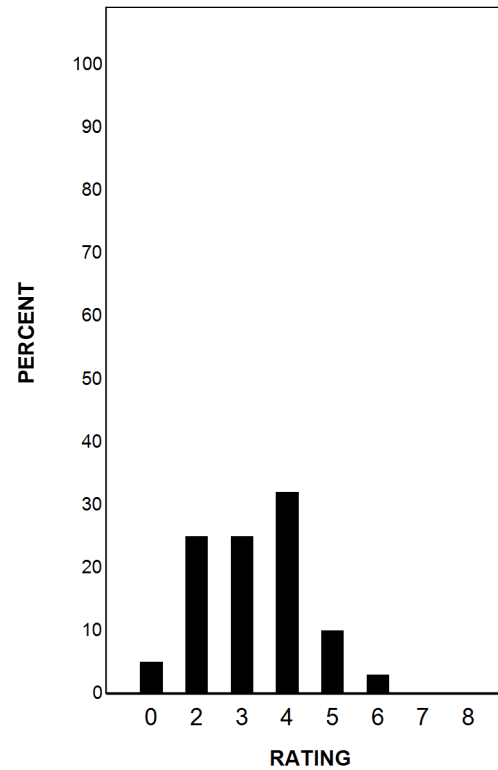
Report Date: SPRING 2019
Date of Testing: SPRING 2019

--- = No Data Reported For Fewer Than Five Students

Written Composition Rating Summary*

Expository Composition

Rating	#	%
0	4466	5
2	23283	25
3	23646	25
4	30483	32
5	9354	10
6	2474	3
7	332	0
8	48	0
Total	94086	100



Each composition has been scored independently by two readers. The written composition rating of 0-8 represents the summation of these scores.

* Results for students who took the test with the Braille, American Sign Language videos accommodation, or the paper STAAR with embedded supports are not included in this report.