

# STATE OF TEXAS ASSESSMENTS OF ACADEMIC READINESS

## Summary Report

### ENGLISH I

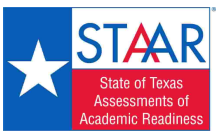
#### All Students

STATEWIDE

Report Date: SUMMER 2021  
Date of Testing: SUMMER 2021

Administration Summary			Number of Students Tested	Average Scale Score	Results for Each Reporting Category*																									
					Number	Percent	1		2		3		4		5		6													
Students Tested	67472	96			Did Not Meet	Approaches	Meets	Masters	Understanding/ Analysis Across Genres	Understanding/ Analysis of Literary Texts	Understanding/ Analysis of Informational Texts	Composition	Revision	Editing	Number of Points Possible															
Students Not Tested															8		13				16				9					
Absent	0	0			Number of Points Scored																									
Other	2464	4			#	%	#	%	#	%	#	%	#	%	#	%	#	%	#	%										
Total Documents Submitted	69936	100			--- = No Data Reported For Fewer Than Five Students																									
Legend																														
<b>All Students</b>					67472	3572	50517	75	16955	25	6751	10	563	1	3.9	49	5.5	42	5.0	38	6.1	38	4.4	49	5.4	60				
<b>Male</b>					40289	3531	31566	78	8723	22	3271	8	239	1	3.8	48	5.2	40	4.9	37	5.7	36	4.3	48	5.1	57				
<b>Female</b>			27181	3632	18949	70	8232	30	3480	13	324	1	4.1	51	5.9	45	5.1	39	6.7	42	4.6	51	5.7	63						
<b>No Information Provided</b>			2	---	---	---	---	---	---	---	---	---	---	---	---	---	---	---	---	---	---	---	---	---						
<b>Hispanic/Latino</b>			43813	3552	33592	77	10221	23	3800	9	216	0	3.8	48	5.4	41	4.9	38	6.0	38	4.3	48	5.2	58						
<b>American Indian or Alaska Native</b>			205	3623	136	66	69	34	25	12	1	0	4.2	53	5.7	44	5.3	41	6.3	39	4.6	52	5.7	63						
<b>Asian</b>			1001	3728	639	64	362	36	225	22	75	7	4.6	57	6.1	47	5.9	45	6.9	43	4.7	52	5.8	65						
<b>Black or African American</b>			11287	3541	8848	78	2439	22	891	8	31	0	3.8	48	5.4	42	4.7	36	5.8	36	4.3	48	5.4	60						
<b>Native Hawaiian or Other Pacific Islander</b>			93	3617	66	71	27	29	11	12	1	1	4.2	52	5.5	43	5.1	39	6.6	41	4.4	49	5.7	64						
<b>White</b>			9780	3659	6459	66	3321	34	1500	15	187	2	4.3	54	5.9	46	5.4	41	6.7	42	4.8	53	5.7	64						
<b>Two or More Races</b>			1032	3674	679	66	353	34	169	16	24	2	4.4	55	6.1	47	5.5	42	6.6	41	4.8	53	5.9	66						
<b>No Information Provided</b>			261	3976	98	38	163	62	130	50	28	11	5.3	66	8.0	62	7.4	57	8.1	51	5.7	63	6.5	73						
<b>Economically Disadvantaged</b>																														
			Yes	50047	3536	39189	78	10858	22	3771	8	156	0	3.8	47	5.3	41	4.8	37	5.9	37	4.3	47	5.2	58					
			No	17142	3671	11215	65	5927	35	2844	17	378	2	4.3	54	6.0	46	5.4	42	6.7	42	4.8	53	5.8	64					
			No Information Provided	283	3935	113	40	170	60	136	48	29	10	5.2	65	7.8	60	7.2	55	7.8	49	5.5	61	6.4	72					
<b>Title I, Part A</b>																														
			Participants	39478	3541	30655	78	8823	22	3177	8	154	0	3.8	47	5.3	41	4.8	37	5.9	37	4.3	48	5.2	58					
			Nonparticipants	27722	3612	19757	71	7965	29	3441	12	381	1	4.1	51	5.7	44	5.1	40	6.4	40	4.5	51	5.5	62					
			No Information Provided	272	3946	105	39	167	61	133	49	28	10	5.2	65	8.0	61	7.3	56	7.9	49	5.5	62	6.5	72					
<b>Migrant</b>																														
			Yes	384	3525	305	79	79	21	30	8	1	0	3.6	45	5.2	40	4.9	38	5.9	37	4.1	45	5.1	56					
			No	66794	3571	50090	75	16704	25	6587	10	534	1	3.9	49	5.5	42	4.9	38	6.1	38	4.4	49	5.4	60					
			No Information Provided	294	3914	122	41	172	59	134	46	28	10	5.1	64	7.8	60	7.0	54	7.7	48	5.4	60	6.4	71					
<b>Limited English Proficient</b>																														
			Current LEP	21677	3463	18575	86	3102	14	757	3	7	0	3.5	43	4.8	37	4.5	35	5.5	34	3.9	43	4.7	52					
			Non-LEP (Monitored 1st Year)	494	3670	297	60	197	40	84	17	3	1	4.5	56	6.0	46	5.8	44	6.7	42	4.7	53	6.0	67					
			Non-LEP (Monitored 2nd Year)	312	3778	150	48	162	52	61	20	1	0	4.9	61	6.5	50	6.1	47	7.5	47	5.2	57	6.7	75					
			Non-LEP (Monitored 3rd Year)	435	3773	219	50	216	50	110	25	10	2	4.7	59	6.7	51	6.2	48	7.1	45	5.2	58	6.5	72					
			Non-LEP (Monitored 4th Year)	1135	3751	623	55	512	45	237	21	17	1	4.7	58	6.6	50	6.0	46	7.1	44	5.1	57	6.4	71					
			Non-LEP (Post Monitoring)	903	3791	471	52	432	48	220	24	33	4	4.8	59	6.7	51	6.1	47	7.4	46	5.3	59	6.6	74					
			Other Non-LEP	42204	3611	30049	71	12155	29	5142	12	463	1	4.1	51	5.7	44	5.1	39	6.4	40	4.6	51	5.6	62					
			No Information Provided	312	3917	133	43	179	57	140	45	29	9	5.1	64	7.7	59	7.1	55	7.8	48	5.4	60	6.4	71					
<b>Bilingual</b>																														
			Participants	98	3606	69	70	29	30	12	12	0	0	4.1	51	5.7	44	5.1	39	6.7	42	4.6	51	5.4	60					
			Nonparticipants	67076	3570	50320	75	16756	25	6604	10	535	1	3.9	49	5.5	42	4.9	38	6.1	38	4.4	49	5.4	60					
			No Information Provided	298	3906	128	43	170	57	135	45	28	9	5.1	63	7.7	59	7.1	54	7.7	48	5.4	60	6.3	70					
<b>ESL</b>																														
			Participants	18331	3457	15784	86	2547	14	621	3	8	0	3.5	43	4.8	37	4.5	35	5.4	34	3.8	43	4.7	52					
			Nonparticipants	48844	3613	34609	71	14235	29	5993	12	527	1	4.1	51	5.7	44	5.1	39	6.4	40	4.6	51	5.6	62					
			No Information Provided	297	3918	124	42	173	58	137	46	28	9	5.1	64	7.7	59	7.1	55	7.8	49	5.4	60	6.4	71					
<b>Special Education</b>																														
			Yes	11400	3418	10243	90	1157	10	306	3	7	0	3.4	42	4.7	37	4.2	33	5.0	31	3.8	42	4.3	48					
			No	55799	3601	40166	72	15633	28	6312	11	528	1	4.0	50	5.6	43	5.1	39	6.3	40	4.5	50	5.6	62					
			No Information Provided	273	3958	108	40	165	60	133	49	28	10	5.3	66	8.0	61	7.3	56	7.9	50	5.6	62	6.5	72					
<b>Gifted/Talented</b>																														
			Participants	1125	4130	314	28	811	72	618	55	193	17	5.9	74	8.5	65	8.1	62	8.6	54	6.4	72	7.5	83					
			Nonparticipants	66056	3561	50082	76	15974	24	5999	9	342	1	3.9	49	5.4	42	4.9	38	6.1	38	4.4	48	5.3	59					
			No Information Provided	291	3921	121	42	170	58	134	46	28	10	5.1	64	7.8	60	7.1	55	7.8	49	5.5	61	6.4	71					
<b>At-Risk</b>																														
			Yes	55333	3525	44049	80	11284	20	3444	6	69	0	3.7	47	5.2	40	4.7	36	5.9	37	4.2	47	5.1	57					
			No	11869	3783	6365	54	5504	46	3175	27	466	4	4.8	60	6.7	52	6.1	47	7.3	45	5.2	58	6.4	71					
			No Information Provided	270	3965	103	38	167	62	132	49	28	10	5.3	66	7.9	61	7.3	57	8.0	50	5.6	62	6.6	73					

\* Results for students who took the test with the Braille, American Sign Language videos accommodation, or the paper STAAR with embedded supports are not included in the reporting category results.



# STATE OF TEXAS ASSESSMENTS OF ACADEMIC READINESS

## Constructed Responses Summary Report

### ENGLISH I

#### All Students

STATEWIDE

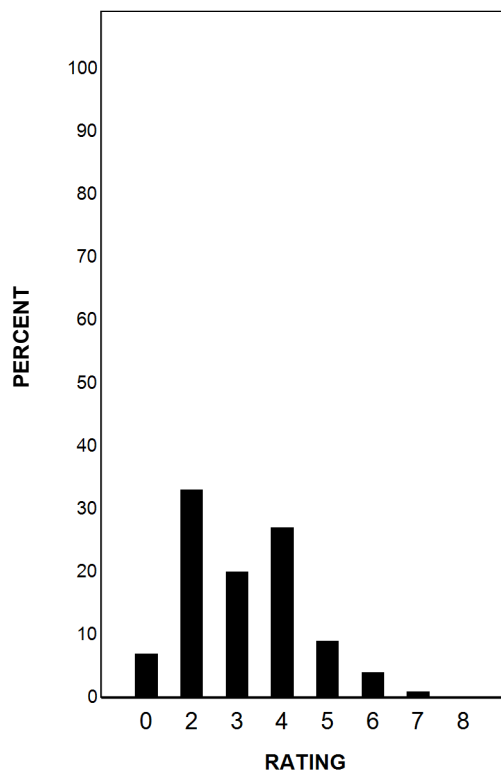
Report Date: SUMMER 2021  
Date of Testing: SUMMER 2021

--- = No Data Reported For Fewer Than Five Students

### Written Composition Rating Summary\*

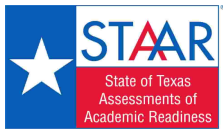
#### Expository Composition

Rating	#	%
0	4533	7
2	22193	33
3	13557	20
4	18093	27
5	6059	9
6	2408	4
7	455	1
8	116	0
Total	67414	100



Each composition has been scored independently by two readers. The written composition rating of 0-8 represents the summation of these scores.

\* Results for students who took the test with the Braille, American Sign Language videos accommodation, or the paper STAAR with embedded supports are not included in this report.



# STATE OF TEXAS ASSESSMENTS OF ACADEMIC READINESS

## Summary Report

### ENGLISH I

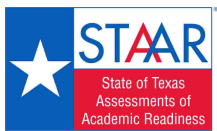
#### First-Time Tested Students

STATEWIDE

Report Date: SUMMER 2021  
Date of Testing: SUMMER 2021

Administration Summary			Number of Students Tested	Average Scale Score	Did Not Meet				Approaches				Meets				Masters				Results for Each Reporting Category*																			
																					Number		Percent		1		2		3		4		5		6					
Students Tested	8319	91					#	%	#	%	#	%	#	%	#	%	#	%	#	%	#	%	#	%	#	%														
																											Students Not Tested		Absent		Other		Total Documents Submitted		9100		100		Understanding/Analysis Across Genres	
Legend					Number of Points Possible																																			
--- = No Data Reported For Fewer Than Five Students					8		13		13		16		9		9		Number of Points Scored																							
					#		%		#		%		#		%		#		%		#		%		#		%		#		%									
<b>All Students</b>					8319	3887	3518	42	4801	58	3458	42	549	7	5.2	65	7.5	58	6.9	53	7.3	46	5.5	62	6.6	74														
Male					4379	3811	2123	48	2256	52	1553	35	230	5	5.0	62	7.1	55	6.7	52	6.7	42	5.3	59	6.3	70														
Female					3938	3972	1393	35	2545	65	1905	48	319	8	5.4	68	7.9	61	7.2	55	8.0	50	5.8	65	7.0	77														
No Information Provided			2	---	---	---	---	---	---	---	---	---	---	---	---	---	---	---	---	---	---	---	---	---																
Hispanic/Latino			5061	3824	2351	46	2710	54	1859	37	209	4	5.0	62	7.1	55	6.6	51	7.1	44	5.3	59	6.4	71																
American Indian or Alaska Native			29	3851	11	38	18	62	10	34	1	3	4.9	62	7.6	58	6.9	53	6.4	40	5.4	60	6.9	77																
Asian			216	4398	30	14	186	86	166	77	74	34	6.7	84	9.8	76	9.5	73	10.0	63	6.8	76	7.8	87																
Black or African American			1325	3751	714	54	611	46	411	31	30	2	4.7	59	6.9	53	6.2	48	6.4	40	5.2	57	6.3	70																
Native Hawaiian or Other Pacific Islander			18	3763	9	50	9	50	5	28	1	6	4.9	61	6.7	51	6.3	49	6.4	40	4.9	55	6.2	69																
White			1318	4118	316	24	1002	76	787	60	182	14	6.1	76	8.7	67	8.2	63	8.4	53	6.3	70	7.4	82																
Two or More Races			178	4095	56	31	122	69	97	54	24	13	5.9	74	8.6	66	8.0	62	8.2	51	6.2	68	7.4	83																
No Information Provided			174	4202	31	18	143	82	123	71	28	16	6.1	76	9.4	72	8.8	68	9.3	58	6.4	71	7.3	81																
Economically Disadvantaged			5457	3766	2817	52	2640	48	1720	32	148	3	4.8	59	6.8	53	6.3	48	6.7	42	5.2	57	6.2	69																
Yes			2671	4115	662	25	2009	75	1608	60	372	14	6.0	75	8.7	67	8.2	63	8.5	53	6.2	69	7.3	81																
No Information Provided			191	4162	39	20	152	80	130	68	29	15	6.0	75	9.2	71	8.5	66	9.0	56	6.2	69	7.2	80																
Title I, Part A			4456	3777	2282	51	2174	49	1454	33	147	3	4.8	60	6.9	53	6.3	49	6.8	42	5.2	58	6.2	69																
Participants			3679	4007	1200	33	2479	67	1877	51	374	10	5.6	70	8.1	62	7.6	58	7.9	50	5.9	66	7.0	78																
Nonparticipants			184	4175	36	20	148	80	127	69	28	15	6.0	75	9.3	71	8.6	66	9.1	57	6.3	70	7.2	80																
No Information Provided			52	3790	28	54	24	46	15	29	1	2	4.8	60	6.6	50	6.6	50	7.1	44	5.1	57	6.3	70																
Migrant			8075	3882	3449	43	4626	57	3314	41	520	6	5.2	65	7.4	57	6.9	53	7.3	46	5.5	61	6.6	73																
Yes			192	4150	41	21	151	79	129	67	28	15	5.9	74	9.1	70	8.5	65	9.0	56	6.2	69	7.2	79																
No Information Provided			1499	3526	1126	75	373	25	181	12	6	0	3.8	47	5.4	41	5.1	39	5.3	33	4.2	47	5.0	56																
Limited English Proficient			71	3873	23	32	48	68	31	44	3	4	5.2	65	7.8	60	7.0	54	7.2	45	5.4	60	6.6	74																
Non-LEP (Monitored 1st Year)			65	4021	11	17	54	83	33	51	1	2	5.8	73	8.3	64	7.9	60	8.1	51	6.2	69	7.7	85																
Non-LEP (Monitored 2nd Year)			100	4121	13	13	87	87	67	67	10	10	6.3	79	8.9	69	8.5	65	8.6	54	6.4	71	7.5	83																
Non-LEP (Monitored 3rd Year)			210	4067	46	22	164	78	122	58	15	7	5.9	73	8.4	64	8.1	62	8.4	52	6.2	69	7.6	85																
Non-LEP (Monitored 4th Year)			221	4170	38	17	183	83	141	64	32	14	6.3	79	9.0	69	8.3	64	8.9	55	6.5	73	7.8	87																
Non-LEP (Post Monitoring)			5956	3948	2220	37	3736	63	2751	46	453	8	5.4	68	7.8	60	7.2	56	7.7	48	5.8	64	6.9	77																
Other Non-LEP			197	4155	41	21	156	79	132	67	29	15	6.0	75	9.1	70	8.5	66	9.0	56	6.2	69	7.2	80																
No Information Provided			13	3755	7	54	6	46	5	38	0	0	4.6	58	6.6	51	6.4	49	6.8	42	4.8	54	5.9	66																
Bilingual			8113	3881	3468	43	4645	57	3324	41	521	6	5.2	65	7.4	57	6.9	53	7.3	46	5.5	61	6.6	73																
Participants			193	4145	43	22	150	78	129	67	28	15	5.9	74	9.1	70	8.5	65	8.9	56	6.2	68	7.1	79																
Nonparticipants			1303	3521	984	76	319	24	155	12	7	1	3.8	47	5.3	41	5.0	39	5.3	33	4.2	46	5.0	56																
No Information Provided			6823	3950	2493	37	4330	63	3173	47	514	8	5.4	68	7.8	60	7.3	56	7.7	48	5.8	64	6.9	77																
ESL			193	4154	41	21	152	79	130	67	28	15	6.0	75	9.2	70	8.5	65	9.0	56	6.2	69	7.1	79																
Special Education			820	3492	643	78	177	22	103	13	6	1	3.7	46	5.4	41	4.8	37	5.1	32	4.1	45	4.7	52																
Yes			7310	3925	2835	39	4475	61	3227	44	515	7	5.3	67	7.7	59	7.1	55	7.5	47	5.7	63	6.8	76																
No			189	4158	40	21	149	79	128	68	28	15	5.9	74	9.2	71	8.5	65	9.0	56	6.2	69	7.2	79																
No Information Provided			603	4467	39	6	564	94	523	87	190	32	6.9	87	10.4	80	10.0	77	10.1	63	7.4	82	8.3	92																
Gifted/Talented			7527	3834	3440	46	4087	54	2807	37	331	4	5.0	63	7.2	55	6.7	51	7.1	44	5.4	60	6.5	72																
Participants			189	4159	39	21	150	79	128	68	28	15	6.0	74	9.2	71	8.5	65	9.0	56	6.2	69	7.2	80																
Nonparticipants			5171	3695	2972	57	2199	43	1257	24	64	1	4.5	56	6.5	50	5.9	45	6.3	39	4.9	55	6.0	66																
Yes			2961	4207	509	17	2452	83	2074	70	457	15	6.3	79	9.1	70	8.7	67	9.1	57	6.6	73	7.7	86																
No			187	4166	37	20	150	80	127	68	28	15	6.0	75	9.2	71	8.6	66	9.0	56	6.3	70	7.2	80																
No Information Provided																																								

\* Results for students who took the test with the Braille, American Sign Language videos accommodation, or the paper STAAR with embedded supports are not included in the reporting category results.



# STATE OF TEXAS ASSESSMENTS OF ACADEMIC READINESS

## Constructed Responses Summary Report

### ENGLISH I

#### First-Time Tested Students

STATEWIDE

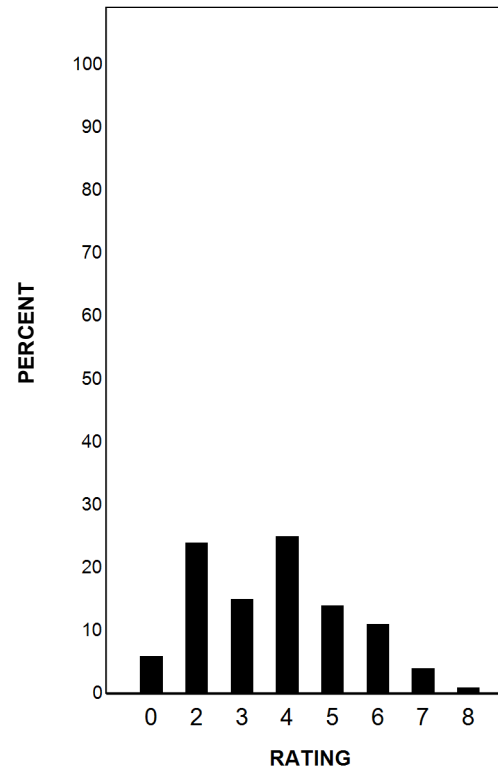
Report Date: SUMMER 2021  
Date of Testing: SUMMER 2021

--- = No Data Reported For Fewer Than Five Students

### Written Composition Rating Summary\*

#### Expository Composition

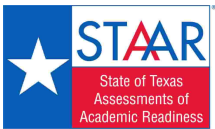
Rating	#	%
0	475	6
2	1995	24
3	1230	15
4	2097	25
5	1197	14
6	925	11
7	295	4
8	101	1
Total	8315	100



Each composition has been scored independently by two readers. The written composition rating of 0-8 represents the summation of these scores.

\* Results for students who took the test with the Braille, American Sign Language videos accommodation, or the paper STAAR with embedded supports are not included in this report.





STATE OF TEXAS ASSESSMENTS OF ACADEMIC READINESS  
*Constructed Responses Summary Report*  
**ENGLISH I**  
**Retested Students**

STATEWIDE

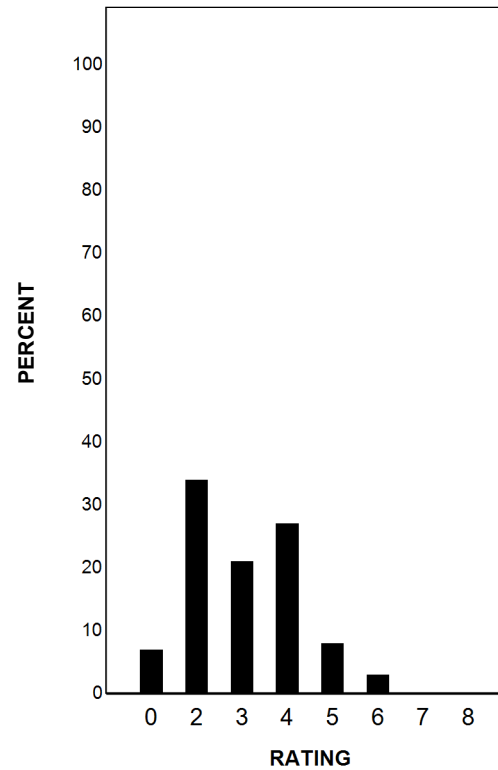
Report Date: SUMMER 2021  
Date of Testing: SUMMER 2021

--- = No Data Reported For Fewer Than Five Students

**Written Composition Rating Summary\***

**Expository Composition**

Rating	#	%
0	4058	7
2	20198	34
3	12327	21
4	15996	27
5	4862	8
6	1483	3
7	160	0
8	15	0
Total	59099	100



Each composition has been scored independently by two readers. The written composition rating of 0-8 represents the summation of these scores.

\* Results for students who took the test with the Braille, American Sign Language videos accommodation, or the paper STAAR with embedded supports are not included in this report.