

STATE OF TEXAS ASSESSMENTS OF ACADEMIC READINESS
Constructed Responses Summary Report
ENGLISH III
All Students

STATEWIDE

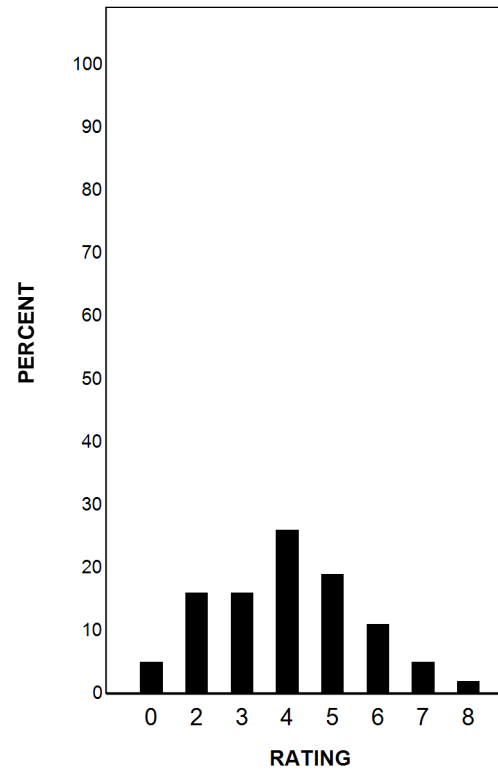
Report Date: SUMMER 2019
Date of Testing: SPRING 2019

--- = No Data Reported For Fewer Than Five Students

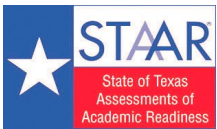
Written Composition Rating Summary

Analytical Composition

Rating	#	%
0	226	5
2	744	16
3	747	16
4	1218	26
5	868	19
6	513	11
7	237	5
8	71	2
Total	4624	100



Each composition has been scored independently by two readers. The written composition rating of 0-8 represents the summation of these scores.



STATE OF TEXAS ASSESSMENTS OF ACADEMIC READINESS
Constructed Responses Summary Report
ENGLISH III
First-Time Tested Students

STATEWIDE

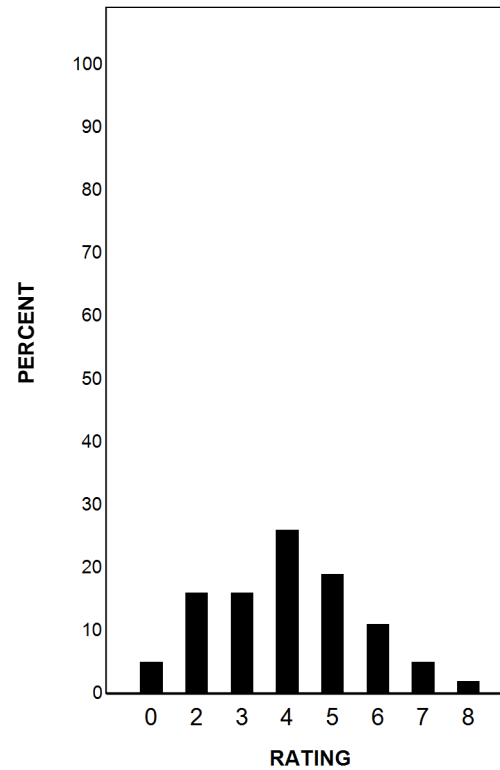
Report Date: SUMMER 2019
Date of Testing: SPRING 2019

--- = No Data Reported For Fewer Than Five Students

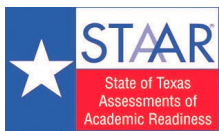
Written Composition Rating Summary

Analytical Composition

Rating	#	%
0	224	5
2	739	16
3	745	16
4	1214	26
5	867	19
6	512	11
7	237	5
8	71	2
Total	4609	100



Each composition has been scored independently by two readers. The written composition rating of 0-8 represents the summation of these scores.



STATE OF TEXAS ASSESSMENTS OF ACADEMIC READINESS

Summary Report

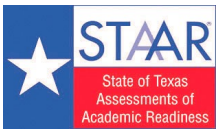
ENGLISH III

Retested Students

STATEWIDE

Report Date: SUMMER 2019
Date of Testing: SPRING 2019

Administration Summary			Number of Students Tested	Average Scale Score	Did Not Meet		Approaches		Meets		Masters		Results for Each Reporting Category												
													1	2	3	4	5	6							
Number	Percent											Understanding/ Analysis Across Genres		Understanding/ Analysis of Literary Texts		Understanding/ Analysis of Informational Texts		Composition		Revision		Editing			
Students Tested			15	100																					
Students Not Tested																									
Absent			0	0																					
Other			0	0																					
Total Documents Submitted			15	100																					
Legend			--- = No Data Reported For Fewer Than Five Students																						
			Number of Points Possible																						
			8		13		13		16		9		9												
			Number of Points Scored																						
			#	%	#	%	#	%	#	%	#	%	#	%	#	%	#	%	#	%	#	%	#	%	
All Students			15	3524	11	73	4	27	2	13	0	0	2.8	35	5.2	40	4.7	36	5.7	36	3.5	39	4.3	47	
Male			12	3503	9	75	3	25	1	8	0	0	2.7	33	5.3	41	4.6	35	5.7	35	3.3	36	4.0	44	
Female			3	---	---	---	---	---	---	---	---	---	---	---	---	---	---	---	---	---	---	---	---	---	
No Information Provided			0	---	---	---	---	---	---	---	---	---	---	---	---	---	---	---	---	---	---	---	---	---	
Hispanic/Latino			15	3524	11	73	4	27	2	13	0	0	2.8	35	5.2	40	4.7	36	5.7	36	3.5	39	4.3	47	
American Indian or Alaska Native			0	---	---	---	---	---	---	---	---	---	---	---	---	---	---	---	---	---	---	---	---	---	
Asian			0	---	---	---	---	---	---	---	---	---	---	---	---	---	---	---	---	---	---	---	---	---	
Black or African American			0	---	---	---	---	---	---	---	---	---	---	---	---	---	---	---	---	---	---	---	---	---	
Native Hawaiian or Other Pacific Islander			0	---	---	---	---	---	---	---	---	---	---	---	---	---	---	---	---	---	---	---	---	---	
White			0	---	---	---	---	---	---	---	---	---	---	---	---	---	---	---	---	---	---	---	---	---	
Two or More Races			0	---	---	---	---	---	---	---	---	---	---	---	---	---	---	---	---	---	---	---	---	---	
No Information Provided			0	---	---	---	---	---	---	---	---	---	---	---	---	---	---	---	---	---	---	---	---	---	
Economically Disadvantaged			Yes	12	3500	10	83	2	17	2	17	0	0	2.7	33	4.8	37	4.8	37	5.5	34	3.3	36	4.3	47
			No	3	---	---	---	---	---	---	---	---	---	---	---	---	---	---	---	---	---	---	---	---	---
			No Information Provided	0	---	---	---	---	---	---	---	---	---	---	---	---	---	---	---	---	---	---	---	---	---
Title I, Part A			Participants	15	3524	11	73	4	27	2	13	0	0	2.8	35	5.2	40	4.7	36	5.7	36	3.5	39	4.3	47
			Nonparticipants	0	---	---	---	---	---	---	---	---	---	---	---	---	---	---	---	---	---	---	---	---	---
			No Information Provided	0	---	---	---	---	---	---	---	---	---	---	---	---	---	---	---	---	---	---	---	---	---
Migrant			Yes	0	---	---	---	---	---	---	---	---	---	---	---	---	---	---	---	---	---	---	---	---	---
			No	15	3524	11	73	4	27	2	13	0	0	2.8	35	5.2	40	4.7	36	5.7	36	3.5	39	4.3	47
			No Information Provided	0	---	---	---	---	---	---	---	---	---	---	---	---	---	---	---	---	---	---	---	---	---
Limited English Proficient			Current LEP	5	3379	4	80	1	20	0	0	0	0	2.2	28	4.8	37	4.2	32	4.4	28	2.8	31	3.8	42
			Non-LEP (Monitored 1st Year)	0	---	---	---	---	---	---	---	---	---	---	---	---	---	---	---	---	---	---	---	---	---
			Non-LEP (Monitored 2nd Year)	0	---	---	---	---	---	---	---	---	---	---	---	---	---	---	---	---	---	---	---	---	---
			Non-LEP (Monitored 3rd Year)	0	---	---	---	---	---	---	---	---	---	---	---	---	---	---	---	---	---	---	---	---	---
			Non-LEP (Monitored 4th Year)	0	---	---	---	---	---	---	---	---	---	---	---	---	---	---	---	---	---	---	---	---	---
			Other Non-LEP	10	3596	7	70	3	30	2	20	0	0	3.1	39	5.4	42	4.9	38	6.4	40	3.8	42	4.5	50
			No Information Provided	0	---	---	---	---	---	---	---	---	---	---	---	---	---	---	---	---	---	---	---	---	---
Bilingual			Participants	0	---	---	---	---	---	---	---	---	---	---	---	---	---	---	---	---	---	---	---	---	---
			Nonparticipants	15	3524	11	73	4	27	2	13	0	0	2.8	35	5.2	40	4.7	36	5.7	36	3.5	39	4.3	47
			No Information Provided	0	---	---	---	---	---	---	---	---	---	---	---	---	---	---	---	---	---	---	---	---	---
ESL			Participants	5	3379	4	80	1	20	0	0	0	0	2.2	28	4.8	37	4.2	32	4.4	28	2.8	31	3.8	42
			Nonparticipants	10	3596	7	70	3	30	2	20	0	0	3.1	39	5.4	42	4.9	38	6.4	40	3.8	42	4.5	50
			No Information Provided	0	---	---	---	---	---	---	---	---	---	---	---	---	---	---	---	---	---	---	---	---	---
Special Education			Yes	1	---	---	---	---	---	---	---	---	---	---	---	---	---	---	---	---	---	---	---	---	---
			No	14	3536	10	71	4	29	2	14	0	0	2.9	36	5.3	41	4.7	36	5.9	37	3.6	40	4.2	47
			No Information Provided	0	---	---	---	---	---	---	---	---	---	---	---	---	---	---	---	---	---	---	---	---	---
Gifted/Talented			Participants	0	---	---	---	---	---	---	---	---	---	---	---	---	---	---	---	---	---	---	---	---	---
			Nonparticipants	15	3524	11	73	4	27	2	13	0	0	2.8	35	5.2	40	4.7	36	5.7	36	3.5	39	4.3	47
			No Information Provided	0	---	---	---	---	---	---	---	---	---	---	---	---	---	---	---	---	---	---	---	---	---
At-Risk			Yes	10	3484	7	70	3	30	1	10	0	0	2.5	31	5.1	39	4.4	34	5.4	34	3.5	39	4.2	47
			No	5	3603	4	80	1	20	1	20	0	0	3.4	43	5.4	42	5.2	40	6.4	40	3.4	38	4.4	49
			No Information Provided	0	---	---	---	---	---	---	---	---	---	---	---	---	---	---	---	---	---	---	---	---	---
Career/Technical Education			Participants	6	3764	4	67	2	33	1	17	0	0	4.2	52	6.3	49	5.7	44	7.0	44	4.2	46	5.2	57
			Nonparticipants	9	3364	7	78	2	22	1	11	0	0	1.9	24	4.4	34	4.0	31	4.9	31	3.0	33	3.7	41
			No Information Provided	0	---	---	---	---	---	---	---	---	---	---	---	---	---	---	---	---	---	---	---	---	---



STATE OF TEXAS ASSESSMENTS OF ACADEMIC READINESS
Constructed Responses Summary Report
ENGLISH III
Retested Students

STATEWIDE

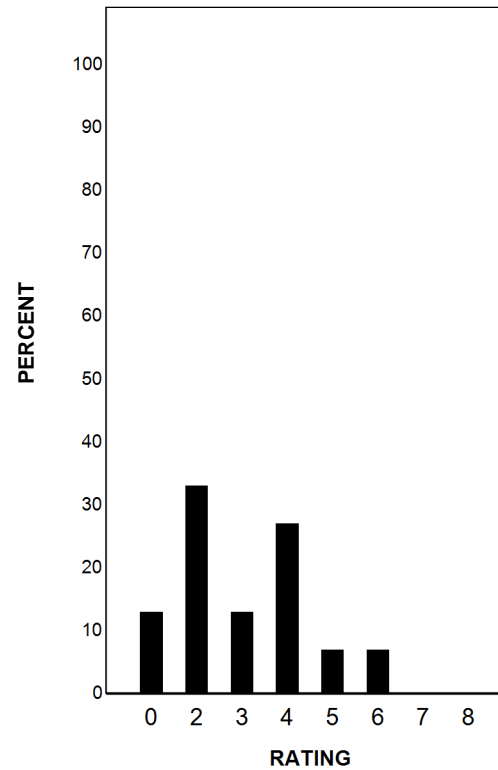
Report Date: SUMMER 2019
Date of Testing: SPRING 2019

--- = No Data Reported For Fewer Than Five Students

Written Composition Rating Summary

Analytical Composition

Rating	#	%
0	2	13
2	5	33
3	2	13
4	4	27
5	1	7
6	1	7
7	0	0
8	0	0
Total	15	100



Each composition has been scored independently by two readers. The written composition rating of 0-8 represents the summation of these scores.