

STATE OF TEXAS ASSESSMENTS OF ACADEMIC READINESS

Summary Report

ENGLISH II

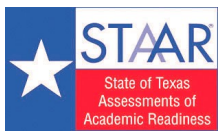
All Students

STATEWIDE

Report Date: FALL 2019
Date of Testing: FALL 2019

Administration Summary			Number of Students Tested	Average Scale Score	Did Not Meet		Approaches		Meets		Masters		Results for Each Reporting Category*												
					#	%	#	%	#	%	#	%	1		2		3		4		5		6		
Number	Percent											Understanding/ Analysis Across Genres		Understanding/ Analysis of Literary Texts		Understanding/ Analysis of Informational Texts		Composition		Revision		Editing			
Students Tested			101003	92																					
Students Not Tested																									
Absent			7473	7																					
Other			766	1																					
Total Documents Submitted			109242	100																					
Legend			--- = No Data Reported For Fewer Than Five Students																						
All Students			101003	3564	72163	71	28840	29	12379	12	976	1	4.1	51	6.8	52	6.5	50	7.4	46	4.8	53	5.1	57	
Male			60733	3520	45232	74	15501	26	6320	10	351	1	3.9	49	6.6	51	6.3	48	7.0	44	4.7	53	4.9	55	
Female			40267	3631	26929	67	13338	33	6058	15	625	2	4.3	54	7.1	55	6.9	53	7.9	49	4.8	54	5.4	59	
No Information Provided			3	---	---	---	---	---	---	---	---	---	---	---	---	---	---	---	---	---	---	---	---	---	
Hispanic/Latino			66345	3560	47658	72	18687	28	7772	12	558	1	4.0	51	6.7	52	6.6	51	7.3	46	4.7	53	5.1	57	
American Indian or Alaska Native			317	3532	236	74	81	26	28	9	2	1	4.2	53	6.8	52	6.2	48	7.2	45	4.7	52	4.8	53	
Asian			2309	3704	1459	63	850	37	517	22	140	6	4.5	56	7.0	54	7.0	54	8.1	51	5.1	56	5.9	65	
Black or African American			15902	3491	12426	78	3476	22	1094	7	26	0	3.8	48	6.5	50	6.1	47	7.0	44	4.5	50	4.9	54	
Native Hawaiian or Other Pacific Islander			147	3489	118	80	29	20	10	7	1	1	3.9	48	6.3	48	5.6	43	7.4	46	4.5	50	4.9	55	
White			14606	3636	9398	64	5208	36	2682	18	230	2	4.5	56	7.4	57	6.7	51	7.7	48	5.1	57	5.2	57	
Two or More Races			1235	3621	803	65	432	35	210	17	10	1	4.4	55	7.4	57	6.6	51	7.6	48	5.0	56	5.2	57	
No Information Provided			142	3878	65	46	77	54	66	46	9	6	5.3	66	8.4	65	8.1	62	8.9	56	5.6	63	6.2	69	
Economically Disadvantaged																									
			Yes	73877	3537	54512	74	19365	26	7483	10	385	1	4.0	50	6.7	51	6.4	49	7.2	45	4.7	52	5.0	56
			No	27004	3638	17587	65	9417	35	4846	18	586	2	4.4	55	7.3	56	6.8	52	7.7	48	5.0	56	5.3	58
			No Information Provided	122	3843	64	52	58	48	50	4	5	4	5.1	64	8.1	62	7.7	60	8.6	54	5.5	61	6.1	68
Title I, Part A																									
			Participants	57878	3565	41291	71	16587	29	7200	12	585	1	4.1	51	6.8	52	6.6	51	7.4	46	4.8	53	5.1	57
			Nonparticipants	42997	3562	30801	72	12196	28	5131	12	386	1	4.1	52	6.9	53	6.4	49	7.4	46	4.8	53	5.0	56
			No Information Provided	128	3797	71	55	57	45	48	38	5	4	4.9	62	7.8	60	7.5	58	8.3	52	5.3	59	6.0	66
Migrant																									
			Yes	887	3525	667	75	220	25	80	9	1	0	3.8	48	6.5	50	6.4	49	7.2	45	4.5	50	5.1	57
			No	99967	3564	71412	71	28555	29	12247	12	970	1	4.1	51	6.8	52	6.5	50	7.4	46	4.8	53	5.1	57
			No Information Provided	149	3775	84	56	65	44	52	35	5	3	4.9	61	7.8	60	7.4	57	8.1	51	5.2	57	5.9	66
Limited English Proficient																									
			Current LEP	33084	3444	27612	83	5472	17	1426	4	9	0	3.7	47	6.0	46	5.8	45	6.7	42	4.3	48	4.9	54
			Non-LEP (Monitored 1st Year)	982	3634	605	62	377	38	165	17	4	0	4.1	52	7.1	54	7.3	56	7.7	48	5.0	55	5.5	62
			Non-LEP (Monitored 2nd Year)	1260	3724	645	51	615	49	224	18	3	0	4.4	56	7.7	59	7.9	61	8.3	52	5.4	60	5.8	64
			Non-LEP (Monitored 3rd Year)	1682	3727	900	54	782	46	320	19	13	1	4.4	55	7.7	59	7.9	61	8.4	52	5.3	59	5.7	63
			Non-LEP (Monitored 4th Year)	1150	3801	536	47	614	53	326	28	21	2	4.6	58	8.1	62	8.3	64	8.6	54	5.5	61	5.9	66
			Other Non-LEP	62710	3614	41791	67	20919	33	9867	16	921	1	4.3	53	7.2	55	6.8	52	7.6	48	5.0	55	5.2	57
			No Information Provided	135	3802	74	55	61	45	51	38	5	4	5.0	63	7.9	60	7.6	58	8.3	52	5.3	59	6.0	66
Bilingual																									
			Participants	140	4047	50	36	90	64	76	54	11	8	5.3	66	9.0	69	9.5	73	10.0	62	5.8	65	6.4	71
			Nonparticipants	100716	3563	72028	72	28688	28	12253	12	960	1	4.1	51	6.8	52	6.5	50	7.4	46	4.8	53	5.1	57
			No Information Provided	147	3777	85	58	62	42	50	34	5	3	4.9	62	7.8	60	7.5	58	8.1	51	5.3	58	5.9	66
ESL																									
			Participants	31410	3443	26224	83	5186	17	1355	4	8	0	3.7	47	6.0	46	5.8	45	6.7	42	4.3	48	4.9	54
			Nonparticipants	69449	3618	45858	66	23591	34	10974	16	963	1	4.3	53	7.2	55	6.8	52	7.7	48	5.0	55	5.2	58
			No Information Provided	144	3791	81	56	63	44	50	35	5	3	4.9	62	7.9	61	7.6	58	8.3	52	5.3	59	5.9	66
Special Education																									
			Yes	14722	3363	12976	88	1746	12	497	3	9	0	3.7	46	5.8	45	5.2	40	6.0	37	4.1	46	4.2	47
			No	86154	3598	59118	69	27036	31	11832	14	962	1	4.2	52	7.0	54	6.7	52	7.6	47	4.9	54	5.2	58
			No Information Provided	127	3814	69	54	58	46	50	39	5	4	5.0	63	8.0	61	7.6	58	8.4	52	5.3	59	6.0	67
			Participants	1548	4457	181	12	1367	88	1236	80	440	28	6.4	80	10.6	82	10.9	84	11.4	71	7.0	78	7.7	85
			Nonparticipants	99319	3550	71906	72	27413	28	11093	11	530	1	4.1	51	6.8	52	6.5	50	7.3	46	4.7	53	5.1	56
			No Information Provided	136	3805	76	56	60	44	50	37	6	4	5.0	63	7.9	61	7.6	58	8.3	52	5.3	59	5.9	66
At-Risk																									
			Yes	88374	3516	66809	76	21565	24	7328	8	126	0	4.0	49	6.6	51	6.3	48	7.1	45	4.6	52	4.9	55
			No	12512	3905	5294	42	7218	58	5004	40	845	7	5.1	63	8.5	65	8.4	65	9.0	56	5.8	64	6.1	68
			No Information Provided	117	3847	60	51	57	49	47	40	5	4	5.1	64	8.0	62	7.9	60	8.6	54	5.4	60	6.1	67
Career/Technical Education																									
			Participants	75329	3566	53715	71	21614	29	8864	12	552	1	4.1	51	6.8	53	6.6	50	7.4	46	4.8	53	5.1	57
			Nonparticipants	25588	3558	18408	72	7180	28	3476	14	419	2	4.1	51	6.8	52	6.4	49	7.3	46	4.7	53	5.0	56
			No Information Provided	86	3933	40	47	46	53	39	45	5	6	5.3	67	8.5	65	8.4	65	9.2	57	5.6	62	6.4	71

* Results for students who took the test with the Braille, American Sign Language videos accommodation, or the paper STAAR with embedded supports are not included in the reporting category results.



STATE OF TEXAS ASSESSMENTS OF ACADEMIC READINESS
Constructed Responses Summary Report
ENGLISH II
All Students

STATEWIDE

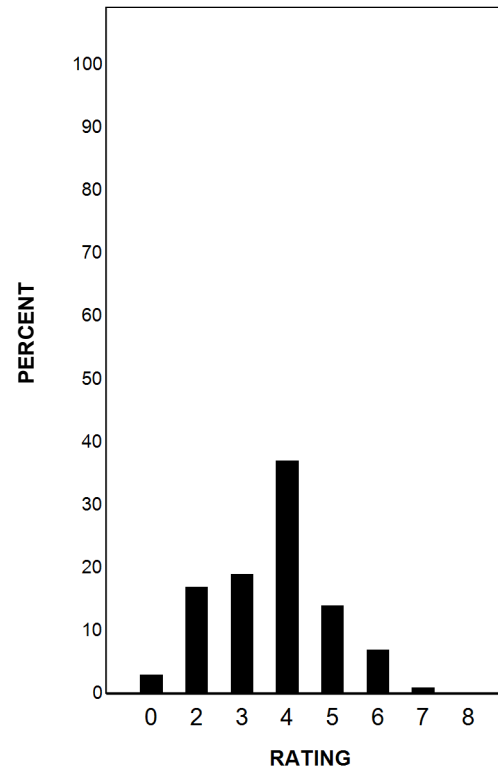
Report Date: FALL 2019
Date of Testing: FALL 2019

--- = No Data Reported For Fewer Than Five Students

Written Composition Rating Summary*

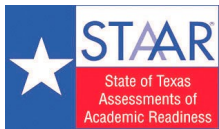
Persuasive Composition

Rating	#	%
0	3310	3
2	17135	17
3	19304	19
4	37700	37
5	14557	14
6	7204	7
7	1212	1
8	492	0
Total	100914	100



Each composition has been scored independently by two readers. The written composition rating of 0-8 represents the summation of these scores.

* Results for students who took the test with the Braille, American Sign Language videos accommodation, or the paper STAAR with embedded supports are not included in this report.



STATE OF TEXAS ASSESSMENTS OF ACADEMIC READINESS

Summary Report

ENGLISH II

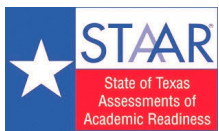
First-Time Tested Students

STATEWIDE

Report Date: FALL 2019
Date of Testing: FALL 2019

Administration Summary			Number of Students Tested	Average Scale Score	Did Not Meet	Approaches	Meets	Masters	Results for Each Reporting Category*															
									Number		Percent		1		2		3		4		5		6	
				Understanding/ Analysis Across Genres	Understanding/ Analysis of Literary Texts	Understanding/ Analysis of Informational Texts	Composition	Revision	Editing	Number of Points Possible														
										8		13		13		16		9		9				
										Number of Points Scored														
				#	%	#	%	#	%	#	%	#	%	#	%	#	%	#	%	#	%			
All Students			13110	3955	4725	36	8385	64	6370	49	965	7	5.2	65	8.7	67	8.8	68	9.0	57	5.9	66	6.3	71
Male			6744	3860	2839	42	3905	58	2858	42	346	5	4.9	61	8.3	64	8.4	64	8.4	52	5.7	64	6.1	67
Female			6363	4057	1884	30	4479	70	3511	55	619	10	5.5	69	9.1	70	9.2	71	9.8	61	6.1	67	6.6	74
No Information Provided			3	---	---	---	---	---	---	---	---	---	---	---	---	---	---	---	---	---	---	---	---	---
Hispanic/Latino			9043	3920	3410	38	5633	62	4129	46	551	6	5.0	63	8.5	65	8.8	67	8.9	55	5.8	64	6.3	70
American Indian or Alaska Native			31	3799	13	42	18	58	13	42	2	6	4.9	62	8.3	64	7.6	59	7.7	48	5.4	60	6.2	68
Asian			463	4438	63	14	400	86	366	79	140	30	6.3	78	10.2	79	10.5	81	11.7	73	7.0	78	7.6	85
Black or African American			1074	3702	591	55	483	45	311	29	26	2	4.5	57	7.5	58	7.2	55	7.8	49	5.3	59	5.7	63
Native Hawaiian or Other Pacific Islander			12	3530	9	75	3	25	1	8	1	8	3.3	41	6.6	51	6.1	47	6.7	42	5.0	56	5.6	62
White			2208	4109	570	26	1638	74	1375	62	226	10	5.9	73	9.6	73	9.3	71	9.8	61	6.4	71	6.7	74
Two or More Races			191	4045	49	26	142	74	114	60	10	5	5.7	72	9.5	73	9.0	69	9.5	60	6.4	71	6.5	72
No Information Provided			88	4171	20	23	68	77	61	69	9	10	6.1	77	9.8	75	9.6	74	10.3	65	6.4	71	7.1	79
Economically Disadvantaged			8581	3850	3655	43	4926	57	3455	40	377	4	4.9	61	8.2	63	8.4	64	8.5	53	5.6	62	6.1	68
Yes			4455	4156	1048	24	3407	76	2869	64	583	13	5.8	73	9.6	74	9.6	74	10.1	63	6.4	72	6.8	76
No			74	4091	22	30	52	70	46	62	5	7	5.8	72	9.4	72	9.3	71	9.9	62	5.9	66	6.9	77
No Information Provided			---	---	---	---	---	---	---	---	---	---	---	---	---	---	---	---	---	---	---	---	---	---
Title I, Part A			8925	3936	3265	37	5660	63	4172	47	579	6	5.1	64	8.6	66	8.8	68	9.0	56	5.8	65	6.3	70
Participants			4103	3997	1431	35	2672	65	2152	52	381	9	5.4	68	8.9	69	8.7	67	9.2	58	6.1	67	6.4	71
Nonparticipants			82	4013	29	35	53	65	46	56	5	6	5.5	69	9.0	69	8.8	68	9.4	59	5.7	63	6.7	75
No Information Provided			---	---	---	---	---	---	---	---	---	---	---	---	---	---	---	---	---	---	---	---	---	---
Migrant			139	3762	72	52	67	48	44	32	1	1	4.5	56	7.8	60	7.8	60	8.4	53	5.1	57	6.0	66
Yes			22880	3957	4621	36	8259	64	6277	49	959	7	5.2	65	8.7	67	8.8	68	9.1	57	5.9	66	6.3	71
No			91	3997	32	35	59	65	49	54	5	5	5.5	69	8.9	69	8.8	67	9.3	58	5.6	63	6.7	74
No Information Provided			---	---	---	---	---	---	---	---	---	---	---	---	---	---	---	---	---	---	---	---	---	---
Limited English Proficient			2458	3525	1764	72	694	28	323	13	9	0	3.9	49	6.3	49	6.6	50	6.9	43	4.6	51	5.2	57
Current LEP			325	3855	114	35	211	65	113	35	4	1	4.7	59	8.3	64	8.9	69	8.6	54	5.7	63	6.3	70
Non-LEP (Monitored 1st Year)			282	3896	91	32	191	68	110	39	3	1	5.0	62	8.5	65	9.3	71	8.9	56	5.7	63	6.3	70
Non-LEP (Monitored 2nd Year)			281	4054	50	18	231	82	151	54	13	5	5.3	66	9.3	71	9.9	76	9.9	62	6.2	69	6.8	76
Non-LEP (Monitored 3rd Year)			342	4146	42	12	300	88	240	70	21	6	5.7	71	9.7	74	10.5	81	10.0	63	6.4	71	6.9	77
Non-LEP (Monitored 4th Year)			9338	4063	2635	28	6703	72	5385	58	910	10	5.5	69	9.3	71	9.3	71	9.6	60	6.2	69	6.6	74
Other Non-LEP			84	4027	29	35	55	65	48	57	5	6	5.6	71	9.0	70	9.0	69	9.5	59	5.7	63	6.7	75
No Information Provided			---	---	---	---	---	---	---	---	---	---	---	---	---	---	---	---	---	---	---	---	---	---
Bilingual			79	4411	6	8	73	92	72	91	11	14	6.4	80	10.7	82	11.2	86	11.6	73	6.8	75	7.5	83
Participants			12944	3952	4687	36	8257	64	6252	48	949	7	5.2	65	8.7	67	8.8	67	9.0	56	5.9	66	6.3	70
Nonparticipants			87	3999	32	37	55	63	46	53	5	6	5.6	70	9.0	69	8.8	68	9.2	58	5.7	64	6.6	74
No Information Provided			---	---	---	---	---	---	---	---	---	---	---	---	---	---	---	---	---	---	---	---	---	---
ESL			2355	3523	1684	72	671	28	302	13	8	0	3.9	49	6.3	49	6.6	50	6.9	43	4.6	52	5.2	57
Participants			10668	4051	3008	28	7660	72	6022	56	952	9	5.5	68	9.2	71	9.3	71	9.5	60	6.2	69	6.6	73
Nonparticipants			87	3994	33	38	54	62	46	53	5	6	5.5	69	9.0	69	8.7	67	9.3	58	5.7	63	6.6	73
No Information Provided			---	---	---	---	---	---	---	---	---	---	---	---	---	---	---	---	---	---	---	---	---	---
Special Education			1350	3431	1056	78	294	22	164	12	9	1	3.9	49	6.2	48	5.7	44	6.0	37	4.4	49	4.5	50
Yes			11680	4015	3642	31	8038	69	6159	53	951	8	5.3	67	9.0	69	9.1	70	9.4	59	6.1	67	6.6	73
No			80	4044	27	34	53	66	47	59	5	6	5.7	71	9.2	71	9.1	70	9.6	60	5.8	64	6.8	75
No Information Provided			---	---	---	---	---	---	---	---	---	---	---	---	---	---	---	---	---	---	---	---	---	---
Gifted/Talented			1218	4655	18	1	1200	99	1165	96	439	36	6.9	86	11.4	88	11.7	90	12.3	77	7.4	82	8.2	91
Participants			11807	3883	4676	40	7131	60	5158	44	520	4	5.0	63	8.4	65	8.5	65	8.7	54	5.7	64	6.2	68
Nonparticipants			85	4019	31	36	54	64	47	55	6	7	5.6	70	9.0	69	8.9	69	9.4	59	5.7	63	6.7	74
No Information Provided			---	---	---	---	---	---	---	---	---	---	---	---	---	---	---	---	---	---	---	---	---	---
At-Risk			7866	3713	4135	53	3731	47	2281	29	117	1	4.5	57	7.6	59	7.6	58	7.8	49	5.3	59	5.7	63
Yes			5166	4323	564	11	4602	89	4044	78	843	16	6.2	77	10.3	79	10.6	82	10.9	68	6.8	76	7.4	82
No			78	4046	26	33	52	67	45	58	5	6	5.6	71	9.1	70	9.0	69	9.7	61	5.8	64	6.8	75
No Information Provided			---	---	---	---	---	---	---	---	---	---	---	---	---	---	---	---	---	---	---	---	---	---
Career/Technical Education			8766	3952	3055	35	5711	65	4263	49	544	6	5.2	65	8.7	67	8.9	68	9.0	57	5.9	66	6.4	71
Participants			4281	3961	1651	39	2630	61	2068	48	416	10	5.2	65	8.7	67	8.6	66	9.0	56	5.9	65	6.3	70
Nonparticipants			63	4086	19	30	44	70	39	62	5	8	5.6	70	9.2	71	9.3	72	10.0	63	5.9	65	6.8	76
No Information Provided			---	---	---	---	---	---	---	---	---	---	---	---	---	---	---	---	---	---	---	---	---	---

* Results for students who took the test with the Braille, American Sign Language videos accommodation, or the paper STAAR with embedded supports are not included in the reporting category results.



STATE OF TEXAS ASSESSMENTS OF ACADEMIC READINESS
Constructed Responses Summary Report
ENGLISH II
First-Time Tested Students

STATEWIDE

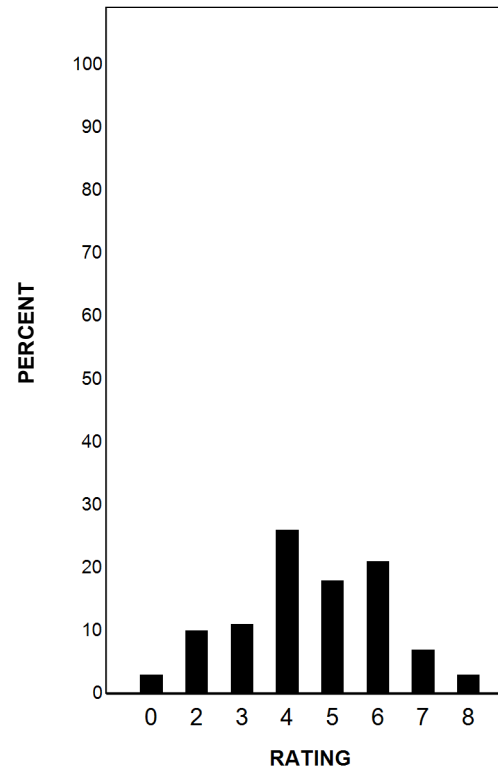
Report Date: FALL 2019
Date of Testing: FALL 2019

--- = No Data Reported For Fewer Than Five Students

Written Composition Rating Summary*

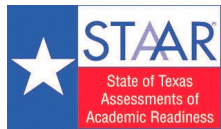
Persuasive Composition

Rating	#	%
0	384	3
2	1301	10
3	1421	11
4	3472	26
5	2418	18
6	2776	21
7	882	7
8	453	3
Total	13107	100



Each composition has been scored independently by two readers. The written composition rating of 0-8 represents the summation of these scores.

* Results for students who took the test with the Braille, American Sign Language videos accommodation, or the paper STAAR with embedded supports are not included in this report.



STATEWIDE

STATE OF TEXAS ASSESSMENTS OF ACADEMIC READINESS

Summary Report

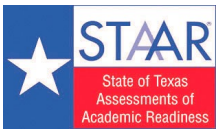
ENGLISH II

Retested Students

Report Date: FALL 2019
Date of Testing: FALL 2019

Administration Summary			Number of Students Tested	Average Scale Score	Results for Each Reporting Category*																				
					Number	Percent	Did Not Meet		Approaches		Meets		Masters		Number of Points Possible						Number of Points Scored				
1	2	3					4	5	6	8		13		13		16		9		9					
Understanding/Analysis Across Genres		Understanding/Analysis of Literary Texts			Understanding/Analysis of Informational Texts		Composition		Revision		Editing		#		#		#		#						
#	%	#			%	#	%	#	%	#	%	#	%	#	%	#	%	#	%	#	%				
All Students	87893	93			3506	67438	77	20455	23	6009	7	11	0	3.9	49	6.5	50	6.2	48	7.1	44	4.6	51	4.9	55
Male	53989				3478	42393	79	11596	21	3462	6	5	0	3.8	48	6.4	49	6.0	46	6.8	43	4.6	51	4.8	53
Female	33904				3551	25045	74	8859	26	2547	8	6	0	4.1	51	6.8	52	6.4	49	7.6	47	4.6	51	5.1	57
No Information Provided	0				---	---	---	---	---	---	---	---	---	---	---	---	---	---	---	---	---	---	---	---	---
Hispanic/Latino	57302				3503	44248	77	13054	23	3643	6	7	0	3.9	49	6.5	50	6.2	48	7.1	44	4.6	51	4.9	55
American Indian or Alaska Native	286		3503	223	78	63	22	15	5	0	0	4.2	52	6.6	51	6.0	46	7.1	44	4.6	52	4.6	52		
Asian	1846		3520	1396	76	450	24	151	8	0	0	4.0	51	6.2	47	6.1	47	7.3	45	4.6	51	5.4	60		
Black or African American	14828		3476	11835	80	2993	20	783	5	0	0	3.8	47	6.4	49	6.0	46	7.0	43	4.5	50	4.8	54		
Native Hawaiian or Other Pacific Islander	135		3486	109	81	26	19	9	7	0	0	3.9	49	6.3	48	5.5	43	7.5	47	4.5	50	4.9	54		
White	12398		3552	8828	71	3570	29	1307	11	4	0	4.2	53	7.0	54	6.2	48	7.3	46	4.9	54	4.9	54		
Two or More Races	1044		3544	754	72	290	28	96	9	0	0	4.2	52	7.0	54	6.2	48	7.3	45	4.8	53	4.9	55		
No Information Provided	54		3400	45	83	9	17	5	9	0	0	3.8	48	6.0	46	5.5	42	6.5	41	4.3	48	4.8	53		
Economically Disadvantaged	Yes 22549		3496 3535	50857 16539	78 73	14439 6010	22 27	4028 1977	6 9	8 3	0	3.9 4.1	48 51	6.5 6.8	50 52	6.2 6.3	47 48	7.1 7.3	44 45	4.6 4.8	51 53	4.9 4.9	54 55		
	No Information Provided 48		3461	42	88	6	13	4	8	0	0	4.1	52	6.0	46	5.4	41	6.5	41	4.8	53	4.8	53		
Title I, Part A	Participants 48953		3498	38026	78	10927	22	3028	6	6	0	3.9	48	6.4	50	6.2	48	7.1	44	4.6	51	4.9	55		
	Nonparticipants 38894		3516	29370	76	9524	24	2979	8	5	0	4.0	50	6.7	51	6.2	47	7.2	45	4.7	52	4.9	54		
	No Information Provided 46		3412	42	91	4	9	2	4	0	0	3.8	48	5.6	43	5.2	40	6.4	40	4.6	51	4.6	51		
Migrant	Yes 748		3481	595	80	153	20	36	5	0	0	3.7	47	6.3	48	6.2	47	6.9	43	4.4	49	5.0	55		
	No Information Provided 87087		3506	66791	77	20296	23	5970	7	11	0	3.9	49	6.5	50	6.2	48	7.1	44	4.6	51	4.9	55		
	No Information Provided 58		3427	52	90	6	10	3	5	0	0	3.8	48	6.1	47	5.4	41	6.3	39	4.4	49	4.8	53		
Limited English Proficient	Current LEP 30626		3437	25848	84	4778	16	1103	4	0	0	3.7	46	5.9	46	5.8	45	6.7	42	4.3	48	4.8	54		
	Non-LEP (Monitored 1st Year) 657		3524	491	75	166	25	52	8	0	0	3.8	48	6.4	50	6.5	50	7.3	46	4.6	51	5.2	57		
	Non-LEP (Monitored 2nd Year) 978		3674	554	57	424	43	114	12	0	0	4.3	54	7.4	57	7.5	58	8.1	51	5.3	59	5.6	62		
	Non-LEP (Monitored 3rd Year) 1401		3661	850	61	551	39	169	12	0	0	4.2	53	7.3	57	7.5	58	8.1	50	5.2	58	5.5	61		
	Non-LEP (Monitored 4th Year) 808		3655	494	61	314	39	86	11	0	0	4.2	52	7.4	57	7.4	57	8.0	50	5.1	57	5.5	61		
	Other Non-LEP 53372		3536	39156	73	14216	27	4482	8	11	0	4.0	50	6.8	53	6.3	49	7.3	46	4.7	53	4.9	55		
	No Information Provided 51		3432	45	88	6	12	3	6	0	0	3.9	49	5.9	45	5.3	40	6.4	40	4.6	51	4.7	53		
Bilingual	Participants 61		3575	44	72	17	28	4	7	0	0	4.0	49	6.7	52	7.2	56	7.8	49	4.7	52	5.0	56		
	Nonparticipants 87772		3506	67341	77	20431	23	6001	7	11	0	3.9	49	6.5	50	6.2	48	7.1	44	4.6	51	4.9	55		
	No Information Provided 60		3455	53	88	7	12	4	7	0	0	3.9	49	6.1	47	5.7	43	6.6	41	4.6	51	4.9	54		
ESL	Participants 29055		3437	24540	84	4515	16	1053	4	0	0	3.7	46	5.9	46	5.8	45	6.7	42	4.3	48	4.8	54		
	Nonparticipants 58781		3540	42850	73	15931	27	4952	8	11	0	4.0	50	6.8	53	6.4	49	7.3	46	4.8	53	4.9	55		
	No Information Provided 57		3481	48	84	9	16	4	7	0	0	4.0	50	6.2	48	5.9	45	6.7	42	4.7	52	5.0	55		
Special Education	Yes 13372		3356	11920	89	1452	11	333	2	0	0	3.6	45	5.8	45	5.1	39	6.0	37	4.1	46	4.2	46		
	No Information Provided 74474		3533	55476	74	18998	26	5673	8	11	0	4.0	50	6.7	51	6.4	49	7.3	46	4.7	52	5.0	56		
	No Information Provided 47		3422	42	89	5	11	3	6	0	0	3.9	49	5.9	45	5.1	39	6.3	39	4.6	51	4.7	53		
Gifted/Talented	Participants 330		3727	163	49	167	51	71	22	1	0	4.6	58	7.8	60	7.7	59	8.0	50	5.4	60	5.8	64		
	Nonparticipants 87512		3505	67230	77	20282	23	5935	7	10	0	3.9	49	6.5	50	6.2	48	7.1	44	4.6	51	4.9	54		
	No Information Provided 51		3447	45	88	6	12	3	6	0	0	4.0	50	6.1	47	5.4	41	6.5	41	4.7	52	4.7	53		
At-Risk	Yes 80508		3496	62674	78	17834	22	5047	6	9	0	3.9	49	6.5	50	6.1	47	7.1	44	4.6	51	4.9	54		
	No Information Provided 7346		3611	4730	64	2616	36	960	13	2	0	4.3	54	7.2	56	6.8	53	7.7	48	5.0	56	5.3	58		
	No Information Provided 39		3448	34	87	5	13	2	5	0	0	4.0	50	5.9	45	5.6	43	6.5	40	4.7	52	4.6	52		
Career/Technical Education	Participants 66563		3515	50660	76	15903	24	4601	7	8	0	4.0	49	6.6	51	6.2	48	7.2	45	4.6	52	4.9	55		
	Nonparticipants 21307		3476	16757	79	4550	21	1408	7	3	0	3.8	48	6.4	49	6.0	46	6.9	43	4.5	50	4.8	53		
	No Information Provided 23		3513	21	91	2	9	0	0	0	0	4.5	57	6.3	49	6.0	46	6.9	43	4.8	53	5.1	57		

* Results for students who took the test with the Braille, American Sign Language videos accommodation, or the paper STAAR with embedded supports are not included in the reporting category results.



STATE OF TEXAS ASSESSMENTS OF ACADEMIC READINESS
Constructed Responses Summary Report
ENGLISH II
Retested Students

STATEWIDE

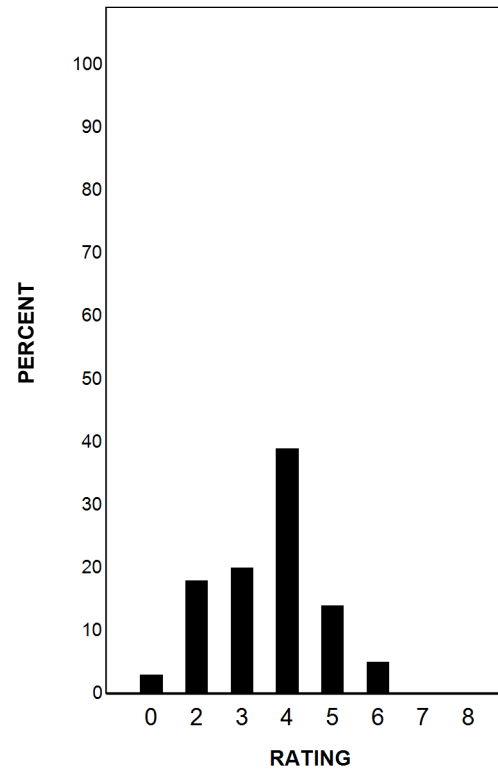
Report Date: FALL 2019
Date of Testing: FALL 2019

--- = No Data Reported For Fewer Than Five Students

Written Composition Rating Summary*

Persuasive Composition

Rating	#	%
0	2926	3
2	15834	18
3	17883	20
4	34228	39
5	12139	14
6	4428	5
7	330	0
8	39	0
Total	87807	100



Each composition has been scored independently by two readers. The written composition rating of 0-8 represents the summation of these scores.

* Results for students who took the test with the Braille, American Sign Language videos accommodation, or the paper STAAR with embedded supports are not included in this report.