



## Calculating the 2024-2025 STAAR Progress Measure

---

The 2024-2025 State of Texas Assessments of Academic Readiness (STAAR®) progress measure is calculated based on a student’s gain score—the scale score difference between the current year and the previous year. Throughout this document, the current year is 2024-2025 and the previous year is 2023-2024. When current and previous years are referenced in the STAAR progress measure, they are “accountability years.” An accountability year generally refers to the time frame from the previous June to the current May. Refer to the [2024-2025 STAAR Progress Measures Questions and Answers](#) document for further information and exceptions.

During the current year, STAAR progress measures are available for STAAR grades 4–8 English Mathematics, grades 4–8 English RLA, Algebra I, English I and English II, and STAAR grades 4–5 Spanish Mathematics and grades 4–5 Spanish RLA. Three steps are used to calculate the STAAR progress measure:

Step 1: Determine if the student should receive a progress measure.

Step 2: Compile the needed information to compute a progress measure.

Step 3: Compute the progress measure.

### **Step 1: Determine if the student should receive a progress measure.**

To receive a progress measure during the current year, a student must meet **ALL** of the following criteria within the same content area (mathematics, RLA, Algebra I, English I, or English II):

- The student has taken a STAAR assessment in the previous year and a STAAR assessment in the current year.
- The student has valid scores for the previous year and the current year.
- The student has tested in lower-grade or course levels in the previous year than in the current year. Students who took the same grade-level or EOC assessment in the previous year and the current year will not receive a progress measure. Students who take STAAR assessments and have skipped grade levels between the previous year and the current year will receive a progress measure.
- For STAAR RLA assessments, the student has taken tests in the same language in the previous year and the current year (i.e., English or Spanish).

- For STAAR English I in the previous year and STAAR Algebra I, English I, and English II in the current year, the student took the test for the first time (did not take a retest).
- For STAAR 4-8 Mathematics and Algebra I, the current and previous year test language could be in English or Spanish.

If a student does not meet one or more of these criteria, the student will not receive a progress measure. Students may meet the criteria and receive a progress measure for one content area but not another.

**Step 2: Compile the needed information to compute a progress measure.**

To calculate the progress measure, the following student information is needed:

- Test information from the current year, including
  - grade level
  - content area (i.e., subject)
  - test language (English or Spanish)
  - scale score
  - raw score
  - performance level indicator for Masters
- Test information from previous year, including
  - grade level
  - content area (i.e., subject)
  - test language (English or Spanish)
  - scale score
  - performance level indicator for Masters
- Gain score = current year scale score – previous year scale score

If a student took the test in multiple grades (e.g., grade 6 math and grade 7 math), then the test score from the higher grade is used in the calculation.

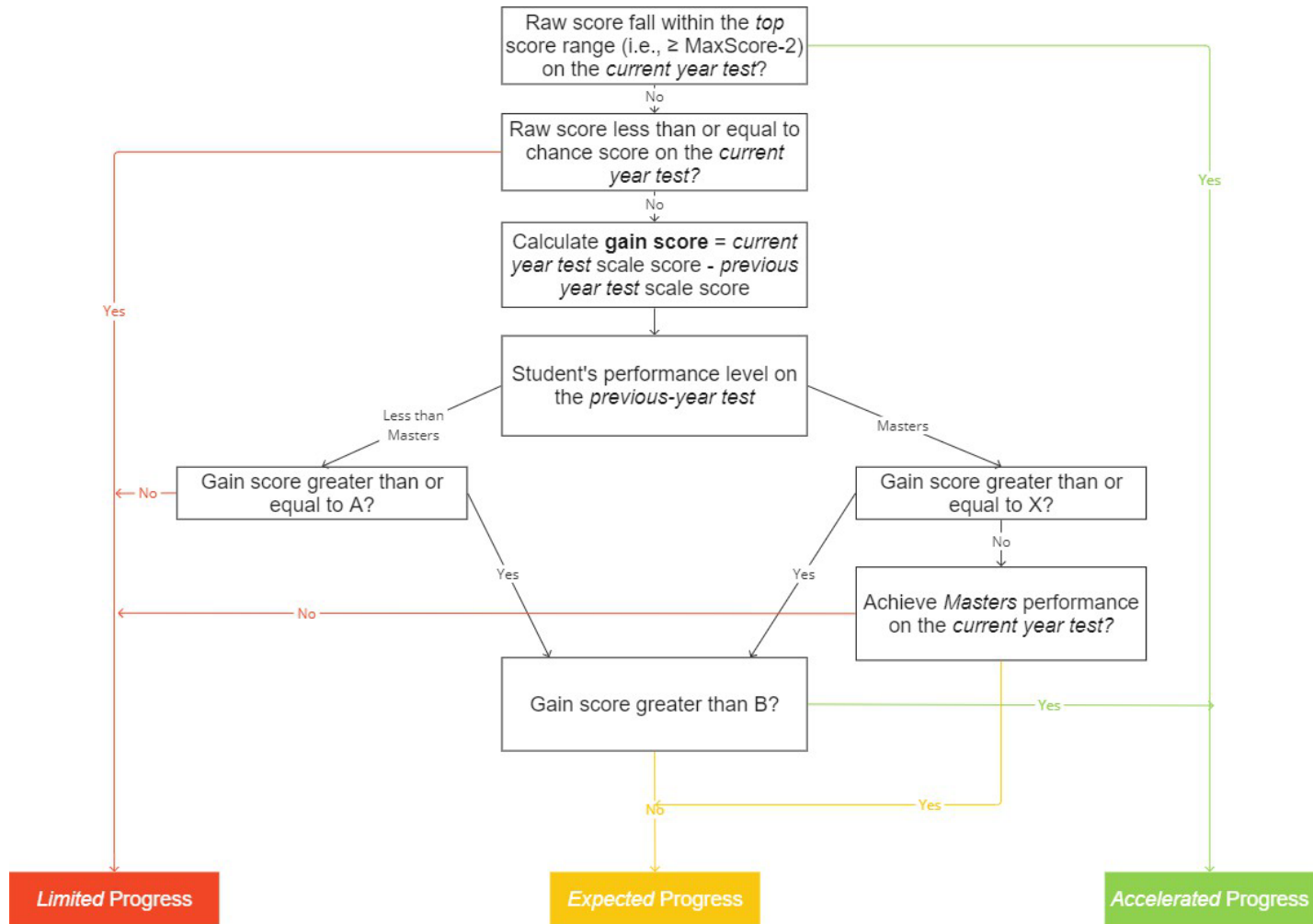
For an EOC assessment, regardless of whether a student retested in English I in the previous year, the scale scores of the student's first test attempt in English I is used to calculate progress.

Similarly, the first attempt of Algebra I, English I, and English II in the current year is used to calculate the progress.

**Step 3: Compute the progress measure.**

Use the "Guide to Computing the STAAR Progress Measure", Table 1, and the example on the following pages to calculate a student's progress measure.

## Guide to Computing the STAAR Progress Measure



Note: Max, Chance, A, X, and B are defined in Table 1.

**Table 1. Values Used to Compute the STAAR Grades 3–8 Progress Measure**

Subject	Language	Current Grade/ Subject	Previous Grade/ Subject	A <sup>1</sup>	X <sup>2</sup>	B <sup>3</sup>	MAX <sup>4</sup>	Chance <sup>5</sup>
Mathematics	English	8	7	66	44	216	48	8
Mathematics	English	8	6	114	120	264	48	8
Mathematics	English	8	5	225	233	375	48	8
Mathematics	English	8	4	302	319	452	48	8
Mathematics	English	8	3	388	409	538	48	8
Mathematics	English	7	6	48	76	220	46	8
Mathematics	English	7	5	159	189	331	46	8
Mathematics	English	7	4	236	275	408	46	8
Mathematics	English	7	3	322	365	494	46	8
Mathematics	English	6	5	111	113	255	43	7
Mathematics	English	6	4	188	199	332	43	7
Mathematics	English	6	3	274	289	418	43	7
Mathematics	English and Spanish	5	4	77	86	219	42	7
Mathematics	English and Spanish	5	3	163	176	305	42	7
Mathematics	English and Spanish	4	3	86	90	219	40	6
RLA	English	8	7	29	32	134	56	11
RLA	English	8	6	64	54	169	56	11
RLA	English	8	5	106	103	211	56	11
RLA	English	8	4	146	140	251	56	11
RLA	English	8	3	231	207	336	56	11
RLA	English	7	6	35	22	137	56	11
RLA	English	7	5	77	71	179	56	11
RLA	English	7	4	117	108	219	56	11
RLA	English	7	3	202	175	304	56	11
RLA	English	6	5	42	49	157	56	11
RLA	English	6	4	82	86	197	56	11
RLA	English	6	3	167	153	282	56	11
RLA	English	5	4	40	37	148	52	10
RLA	English	5	3	125	104	233	52	10
RLA	English	4	3	85	67	196	52	10
RLA	Spanish	5	4	68	81	174	52	10
RLA	Spanish	5	3	109	147	215	52	10
RLA	Spanish	4	3	41	66	134	52	10

Notes:

<sup>1</sup> A is the distance or difference between the Meets cut scale scores on the current and previous year tests.

<sup>2</sup> X is the distance or difference between the Masters cut scale scores on the current and previous year tests.

<sup>3</sup> B is the distance or difference between the Masters cut scale score on the current year test and the Meets cut scale score on the previous year test.

<sup>4</sup> MAX is the maximum possible raw score on the current-year test.

<sup>5</sup> Chance is defined as the raw score resulting from one-fourth of the points possible for dichotomous items.

**Table 2. Values Used to Compute the STAAR Algebra I, English I and English II Progress Measure**

Subject	Previous Grade/Subject	A <sup>1</sup>	X <sup>2</sup>	B <sup>3</sup>	MAX <sup>4</sup>	Chance <sup>5</sup>
Algebra I	Grade 3 Mathematics English or Spanish	2529	2745	2874	59	10
Algebra I	Grade 4 Mathematics English or Spanish	2443	2655	2788	59	10
Algebra I	Grade 5 Mathematics English or Spanish	2366	2569	2711	59	10
Algebra I	Grade 6 Mathematics	2255	2456	2600	59	10
Algebra I	Grade 7 Mathematics	2207	2380	2552	59	10
Algebra I	Grade 8 Mathematics	2141	2336	2486	59	10
English I	Grade 3 RLA	2533	3010	3139	64	12
English I	Grade 4 RLA	2448	2943	3054	64	12
English I	Grade 5 RLA	2408	2906	3014	64	12
English I	Grade 6 RLA	2366	2857	2972	64	12
English I	Grade 7 RLA	2331	2835	2937	64	12
English I	Grade 8 RLA	2302	2803	2908	64	12
English II	English I	0	128	734	64	12

Notes:

<sup>1</sup> A is the distance or difference between the Meets cut scale scores on the current and previous year tests.

<sup>2</sup> X is the distance or difference between the Masters cut scale scores on the current and previous year tests.

<sup>3</sup> B is the distance or difference between the Masters cut scale score on the current year test and the Meets cut scale score on the previous year test.

<sup>4</sup> MAX is the maximum possible raw score on the current-year test.

<sup>5</sup> Chance is defined as the raw score resulting from one-fourth of the points possible for dichotomous items.

### Example: STAAR Grade 5 RLA

#### Step 1: Determine if the student should receive a progress measure.

The student meets **ALL** of the criteria for RLA.

- a. Both RLA tests were STAAR tests.
- b. The student had a valid score for RLA in the previous year and a valid score for RLA in the current year.
- c. The student did not test in the same grade level (grade 3 in the previous year and grade 5 in the current year).
- d. Both RLA tests were in the same language (English).

Since the student meets all the criteria, the student will receive a progress measure in RLA.

**Step 2: Compile the needed information to compute a progress measure.**

To calculate the progress measure, the following student information is needed:

- e. Test information from the current year, including
  - i. grade level – 5
  - ii. content area – RLA
  - iii. test language – English
  - iv. scale score – 1486<sup>1</sup>
  - v. raw score – 29
  - vi. performance level indicator for Masters – 0 (did not reach the Masters level)
- f. Test information from previous year, including
  - i. grade level – 3
  - ii. content area – RLA
  - iii. test language – English
  - iv. scale score – 1331<sup>1</sup>
  - v. performance level indicator for Masters – 0 (did not reach the Masters level)
- g. Gain score =  $1486 - 1331 = 155$

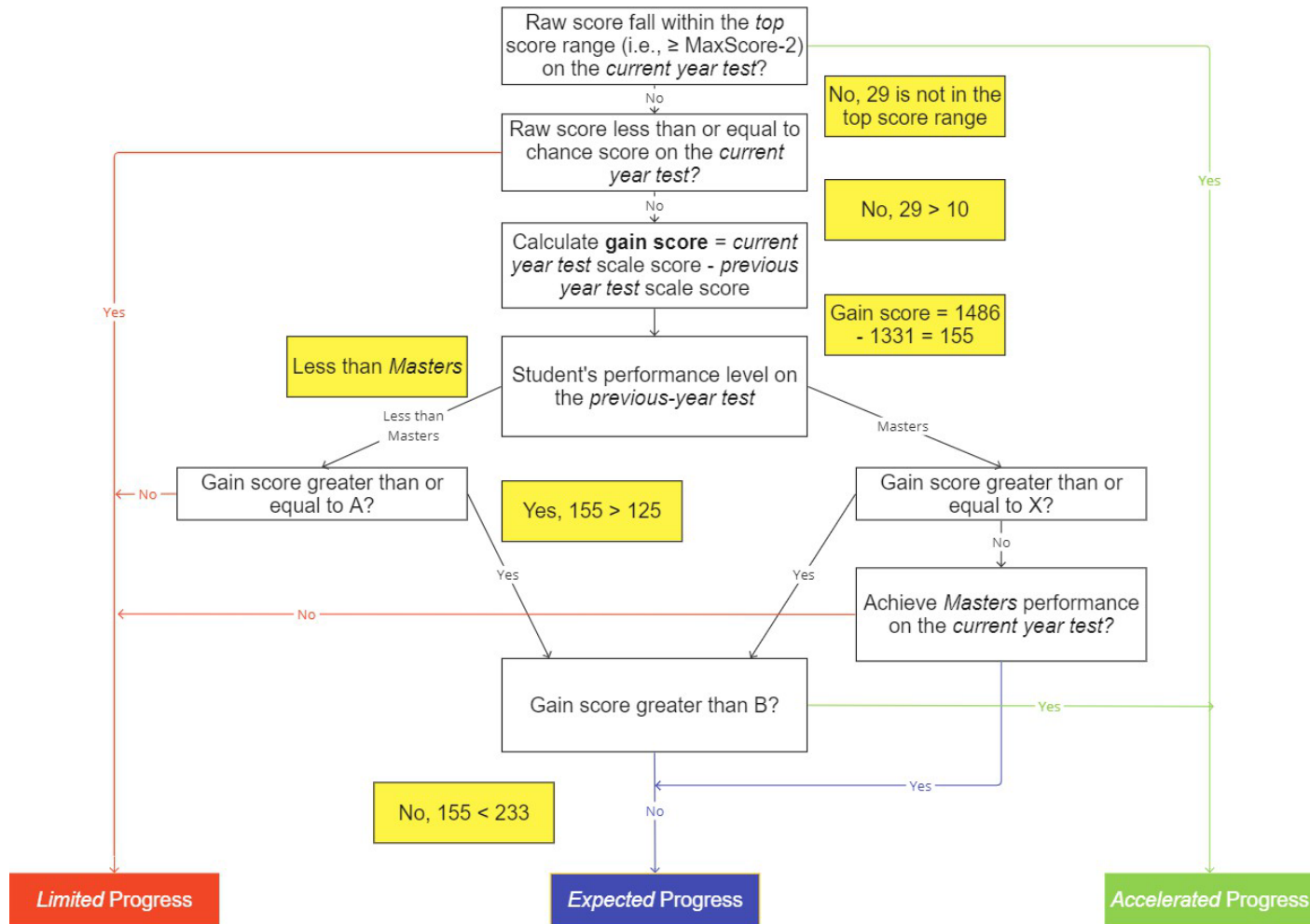
**Step 3: Compute the progress measure.**

The following page illustrates how the student information from Step 2 and the values in Table 1 are used to determine the value of the progress measure.

---

<sup>1</sup> These numbers are used for illustration purposes only, and they might not correspond to any scale score points from the current year STAAR grade 5 English RLA or the previous year STAAR grade 3 English RLA raw score to scale score conversion tables.

Example: STAAR Grade 5 RLA (continued)



Student has Expected Progress for grade 5 English RLA

Note: Max, Chance, A, X, and B are defined in Table 1.