

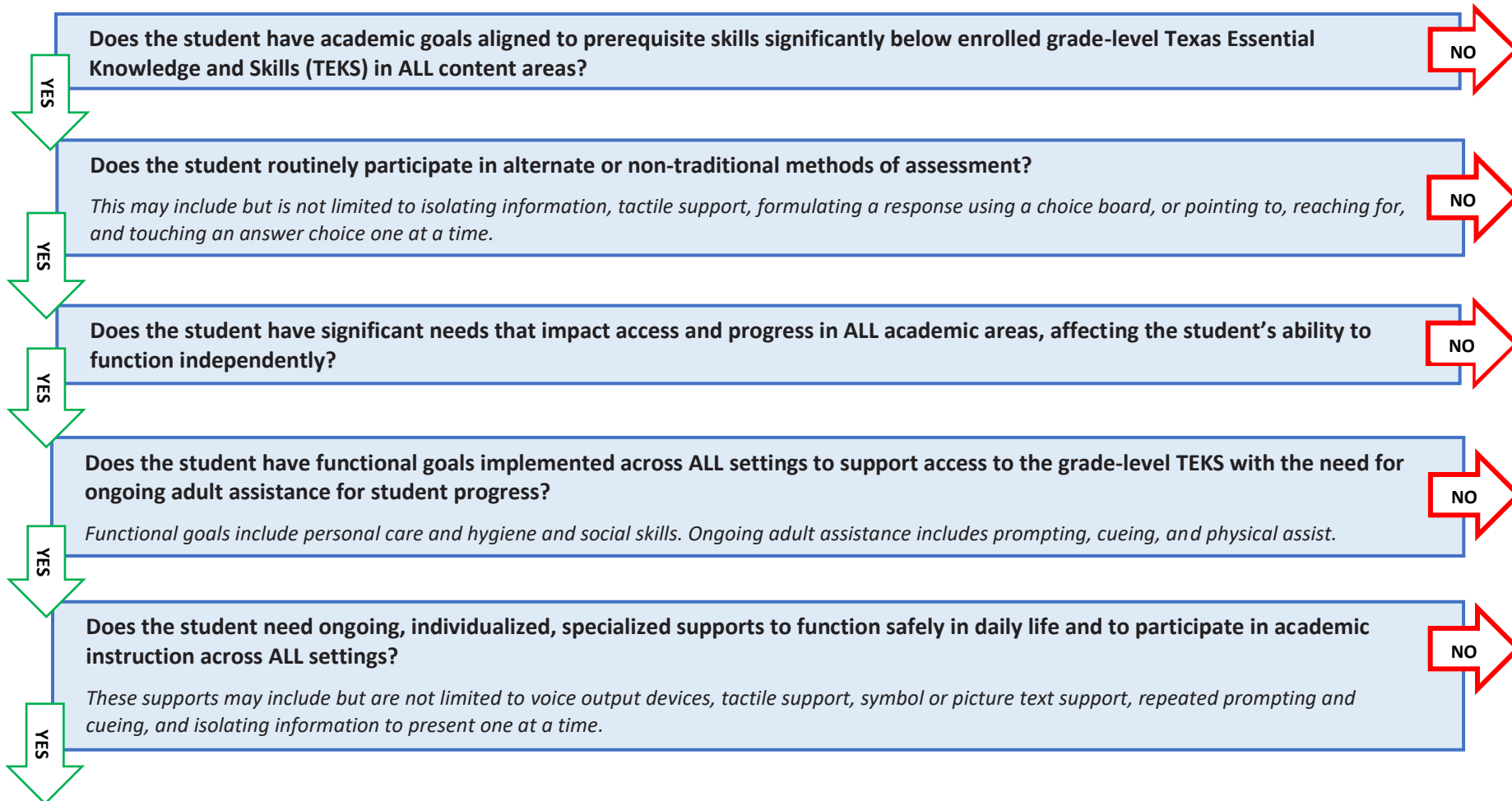
Companion Document

STAAR Alternate 2 Participation Requirements



This document should be used in conjunction with the State of Texas Assessments of Academic Readiness (STAAR®) Alternate 2 Participation Requirements. Admission, review, and dismissal (ARD) committees are responsible for determining state assessment eligibility by reviewing the student's unique educational and adaptive needs. Sources of evidence for a student's eligibility for STAAR Alternate 2 are on page 2 of this document.

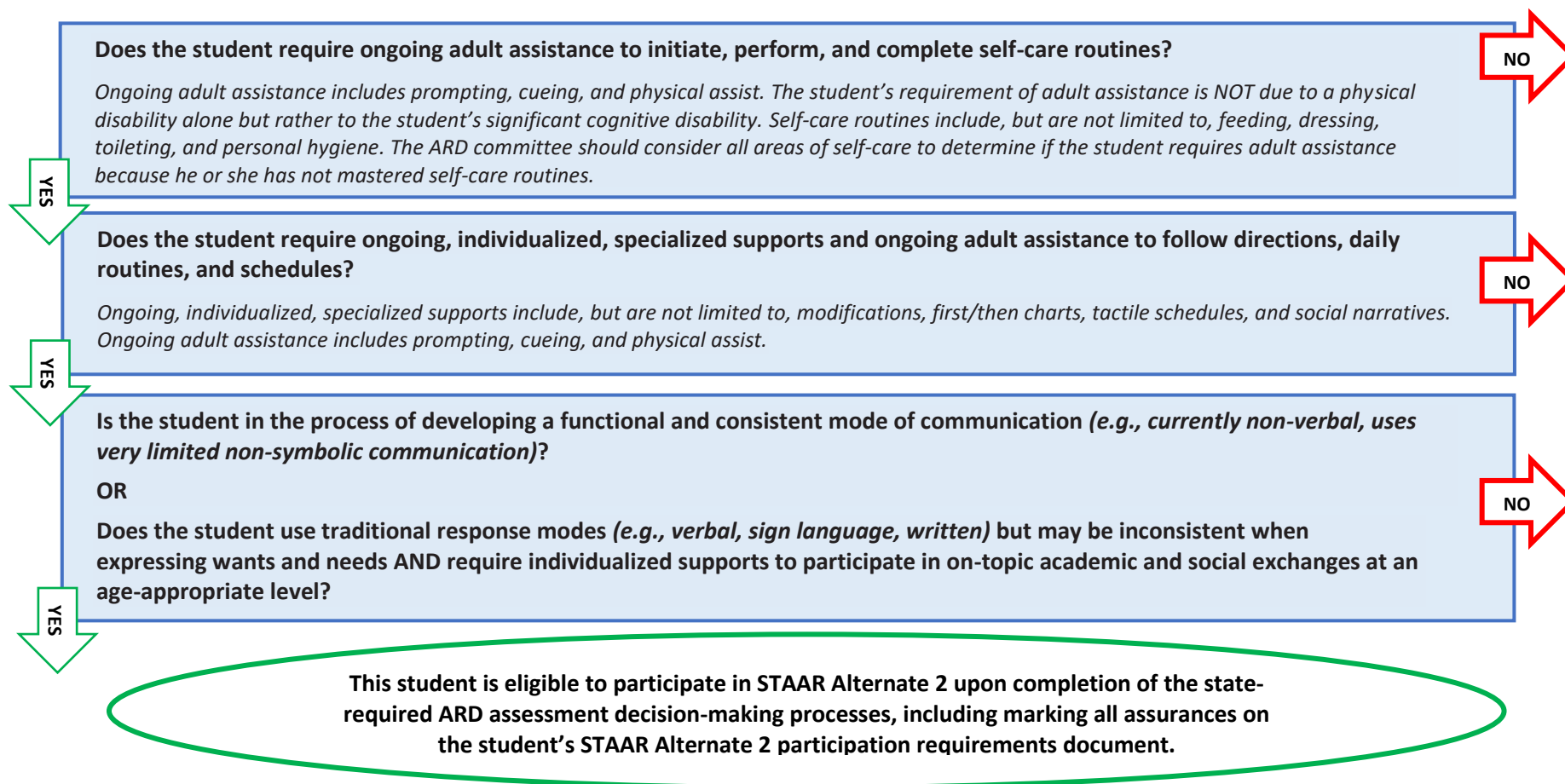
A student that meets eligibility for special education and related services due to a specific learning disability (SLD) or a speech impairment (SI) as the ONLY disability designation is **NOT** eligible for STAAR Alternate 2 and must take STAAR.



The student is **NOT** eligible for STAAR Alternate 2 and must be assessed with STAAR. Members of the ARD committee should be trained on STAAR accommodations to make informed assessment decisions.

Companion Document

STAAR Alternate 2 Participation Requirements



The student is **NOT** eligible for STAAR Alternate 2 and must be assessed with STAAR. Members of the ARD committee should be trained on STAAR accommodations to make informed assessment decisions.

Sources of Evidence

- Present Levels of Academic Achievement and Functional Performance (PLAAFP) statements
- Results of cognitive ability tests
- Results of adaptive behavior skills assessments
- Data from research-based interventions
- Progress monitoring data
- Results of informal assessments or teacher-collected data and checklists
- Examples from the student's goals/objectives
- Post-school outcomes documented in the transition plan portion of the student's individualized education program (IEP)