

STATE OF TEXAS ASSESSMENTS OF ACADEMIC READINESS

Summary Report

ENGLISH II

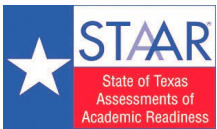
All Students

STATEWIDE

Report Date: SPRING 2021
Date of Testing: SPRING 2021

Administration Summary			Number of Students Tested	Average Scale Score	Results for Each Reporting Category*																									
					Number	Percent	1		2		3		4		5		6													
Students Tested	393559	91			Did Not Meet	Approaches	Meets	Masters	Understanding/ Analysis Across Genres	Understanding/ Analysis of Literary Texts	Understanding/ Analysis of Informational Texts	Composition	Revision	Editing	Number of Points Possible															
Students Not Tested	Absent	11418													3	Other	28306	7	8		13				16				9	
Total Documents Submitted	433283	100			Number of Points Scored																									
Legend					--- = No Data Reported For Fewer Than Five Students																									
					#	%	#	%	#	%	#	%	#	%	#	%	#	%	#	%	#	%	#	%						
All Students					393559	4080	117340	30	276219	70	225847	57	42676	11	5.6	70	8.7	67	8.7	67	9.1	57	6.7	74	6.0	66				
Male					202523	3987	71801	35	130722	65	103380	51	15987	8	5.5	68	8.3	64	8.2	63	8.4	53	6.5	72	5.7	63				
Female					191026	4179	45534	24	145492	76	122465	64	26688	14	5.8	72	9.2	70	9.2	70	9.8	61	7.0	77	6.2	69				
No Information Provided			10	3808	5	50	5	50	2	20	1	10	4.1	51	7.9	61	6.5	50	7.4	46	6.1	68	5.6	62						
Hispanic/Latino			209197	3963	75544	36	133653	64	103510	49	13026	6	5.4	67	8.2	63	8.1	63	8.5	53	6.4	71	5.6	62						
American Indian or Alaska Native			1219	4076	355	29	864	71	715	59	119	10	5.6	70	8.8	68	8.7	67	9.1	57	6.7	75	5.9	66						
Asian			18477	4594	1922	10	16555	90	15605	84	7253	39	6.6	83	10.3	79	10.7	82	11.7	73	7.6	84	7.5	84						
Black or African American			49802	3909	20143	40	29659	60	22136	44	2585	5	5.1	64	8.0	62	7.8	60	8.2	51	6.3	70	5.4	61						
Native Hawaiian or Other Pacific Islander			569	4074	174	31	395	69	332	58	57	10	5.4	68	8.6	66	8.5	65	9.4	59	6.6	73	6.1	67						
White			104818	4292	17295	17	87523	83	77044	74	18140	17	6.2	77	9.7	75	9.7	75	10.1	63	7.3	81	6.6	74						
Two or More Races			8810	4254	1656	19	7154	81	6175	70	1429	16	6.1	76	9.5	73	9.5	73	9.9	62	7.2	80	6.5	72						
No Information Provided			667	4010	251	38	416	62	330	49	67	10	5.3	67	8.4	65	8.2	63	8.5	53	6.4	72	5.7	64						
Economically Disadvantaged			Yes	218363	3907	87296	40	131067	60	98144	45	10415	5	5.2	65	8.0	61	7.8	60	8.2	51	6.3	70	5.4	60					
			No	174584	4298	29753	17	144831	83	127462	73	32233	18	6.2	77	9.7	75	9.7	75	10.2	64	7.3	81	6.6	74					
			No Information Provided	612	3842	291	48	321	52	241	39	28	5	4.9	61	7.7	60	7.4	57	7.6	47	6.2	68	5.2	58					
Title I, Part A			Participants	173849	3954	64933	37	108916	63	84185	48	11026	6	5.3	66	8.2	63	8.0	62	8.4	53	6.4	71	5.6	62					
			Nonparticipants	219109	4181	52134	24	166975	76	141420	65	31623	14	5.9	73	9.2	71	9.2	70	9.6	60	7.0	77	6.2	69					
			No Information Provided	601	3862	273	45	328	55	242	40	27	4	4.9	62	7.9	61	7.5	58	7.7	48	6.2	69	5.3	59					
Migrant			Yes	1454	3751	770	53	684	47	477	33	29	2	4.7	59	7.1	55	6.9	53	7.5	47	5.6	63	4.9	55					
			No	391430	4082	116259	30	275171	70	225101	58	42617	11	5.6	70	8.7	67	8.7	67	9.1	57	6.7	74	6.0	66					
			No Information Provided	675	3847	311	46	364	54	269	40	30	4	4.9	61	7.8	60	7.5	58	7.6	47	6.1	68	5.3	59					
Limited English Proficient			Current LEP	63364	3589	42418	67	20946	33	11578	18	322	1	4.2	52	6.2	48	6.0	46	6.6	41	5.2	57	4.4	49					
			Non-LEP (Monitored 1st Year)	2469	4088	532	22	1937	78	1520	62	144	6	5.9	74	8.9	69	8.9	69	9.2	58	6.8	76	6.1	68					
			Non-LEP (Monitored 2nd Year)	3927	4036	949	24	2978	76	2127	54	170	4	5.8	73	8.7	67	8.6	66	9.1	57	6.7	74	5.9	66					
			Non-LEP (Monitored 3rd Year)	3463	4170	506	15	2957	85	2416	70	239	7	6.1	76	9.3	72	9.3	72	9.8	61	7.0	78	6.4	71					
			Non-LEP (Monitored 4th Year)	8101	4173	1177	15	6924	85	5644	70	509	6	6.2	77	9.4	73	9.5	73	9.6	60	7.1	78	6.3	70					
			Non-LEP (Post Monitoring)	17126	4285	1991	12	15135	88	13130	77	2115	12	6.4	79	9.8	75	9.9	76	10.1	63	7.3	81	6.7	74					
			Other Non-LEP	294390	4172	69443	24	224947	76	189145	64	39144	13	5.9	73	9.2	71	9.1	70	9.5	60	7.0	78	6.2	69					
			No Information Provided	719	3855	324	45	395	55	287	40	33	5	5.0	62	7.8	60	7.6	58	7.6	48	6.1	68	5.3	59					
Bilingual			Participants	722	4124	182	25	540	75	461	64	69	10	5.9	73	8.9	69	9.0	69	9.5	59	6.8	75	6.2	69					
			Nonparticipants	392145	4081	116834	30	275311	70	225124	57	42580	11	5.6	70	8.7	67	8.7	67	9.1	57	6.7	74	6.0	66					
			No Information Provided	692	3833	324	47	368	53	262	38	27	4	4.9	61	7.7	59	7.4	57	7.6	47	6.1	68	5.2	58					
ESL			Participants	54856	3576	37333	68	17523	32	9537	17	251	0	4.1	51	6.2	47	5.9	46	6.5	41	5.1	57	4.4	49					
			Nonparticipants	337994	4163	79683	24	258311	76	216033	64	42397	13	5.9	73	9.2	70	9.1	70	9.5	59	7.0	77	6.2	69					
			No Information Provided	709	3843	324	46	385	54	277	39	28	4	4.9	62	7.8	60	7.5	58	7.6	48	6.1	68	5.2	58					
Special Education			Yes	32087	3500	24172	75	7915	25	4290	13	220	1	3.9	48	5.8	45	5.5	43	5.8	36	4.9	54	3.9	44					
			No	360855	4132	92880	26	267975	74	221318	61	42431	12	5.8	72	9.0	69	8.9	69	9.4	59	6.9	76	6.1	68					
			No Information Provided	617	3843	288	47	329	53	239	39	25	4	4.9	61	7.8	60	7.4	57	7.6	47	6.1	68	5.2	58					
Gifted/Talented			Participants	38140	4704	993	3	37147	97	35950	94	15776	41	7.0	88	11.1	85	11.4	87	11.9	75	8.0	89	7.9	87					
			Nonparticipants	354760	4014	116039	33	238721	67	189643	53	26873	8	5.5	68	8.5	65	8.4	64	8.8	55	6.6	73	5.8	64					
			No Information Provided	659	3839	308	47	351	53	254	39	27	4	4.9	61	7.8	60	7.4	57	7.5	47	6.1	68	5.2	58					
At-Risk			Yes	201519	3762	101176	50	100343	50	65197	32	3017	1	4.8	60	7.3	56	7.0	54	7.5	47	5.9	65	4.9	55					
			No	191473	4416	15907	8	175566	92	160424	84	39635	21	6.5	81	10.3	79	10.4	80	10.7	67	7.6	84	7.0	78					
			No Information Provided	567	3863	257	45	310	55	226	40	24	4	5.0	62	7.9	61	7.5	58	7.7	48	6.2	69	5.3	59					

* Results for students who took the test with the Braille, American Sign Language videos accommodation, or the paper STAAR with embedded supports are not included in the reporting category results.



STATE OF TEXAS ASSESSMENTS OF ACADEMIC READINESS
Constructed Responses Summary Report
ENGLISH II
All Students

STATEWIDE

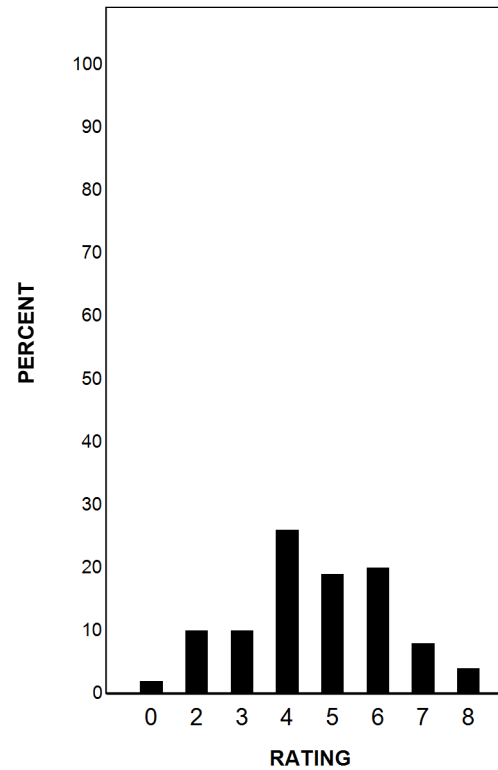
Report Date: SPRING 2021
Date of Testing: SPRING 2021

--- = No Data Reported For Fewer Than Five Students

Written Composition Rating Summary*

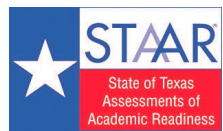
Persuasive Composition

Rating	#	%
0	7485	2
2	32848	10
3	33038	10
4	84523	26
5	59852	19
6	63958	20
7	26054	8
8	11591	4
Total	319349	100



Each composition has been scored independently by two readers. The written composition rating of 0-8 represents the summation of these scores.

* Results for students who took the test with the Braille, American Sign Language videos accommodation, or the paper STAAR with embedded supports are not included in this report.



STATE OF TEXAS ASSESSMENTS OF ACADEMIC READINESS Constructed Responses Summary Report - DO (Second Base Form)**

STATEWIDE

ENGLISH II All Students

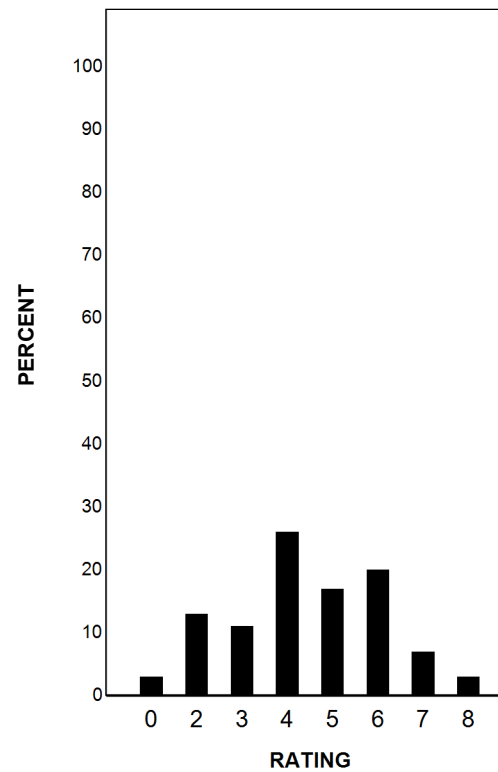
Report Date: SPRING 2021
Date of Testing: SPRING 2021

--- = No Data Reported For Fewer Than Five Students

Written Composition Rating Summary*

Persuasive Composition

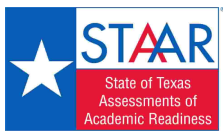
Rating	#	%
0	2373	3
2	9567	13
3	7949	11
4	19304	26
5	12672	17
6	14863	20
7	5286	7
8	2059	3
Total	74073	100



Each composition has been scored independently by two readers. The written composition rating of 0-8 represents the summation of these scores.

* Results for students who took the test with the Braille, American Sign Language videos accommodation, or the paper STAAR with embedded supports are not included in this report.

**Test form version DO specifies that a secondary form was offered to the candidate during the 5 week extended period of testing.



STATE OF TEXAS ASSESSMENTS OF ACADEMIC READINESS

Summary Report

ENGLISH II

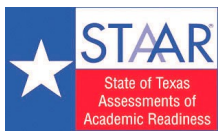
First-Time Tested Students

STATEWIDE

Report Date: SPRING 2021
Date of Testing: SPRING 2021

Administration Summary			Number of Students Tested	Average Scale Score	Did Not Meet		Approaches		Meets		Masters		Results for Each Reporting Category*													
													Number	Percent	1		2		3		4		5		6	
Students Tested	367946	92			Understanding/ Analysis Across Genres	Understanding/ Analysis of Literary Texts	Understanding/ Analysis of Informational Texts	Composition	Revision	Editing	Number of Points Possible															
	Students Not Tested	Absent									9088	2	Other	23388	6	8	13				16				9	
Total Documents Submitted	400422	100			Number of Points Scored																					
Legend					#		#		#		#		#		#		#		#		#					
--- = No Data Reported For Fewer Than Five Students					%	%	%	%	%	%	%	%	%	%	%	%	%	%	%	%	%					
All Students					367946	4120	97497	26	270449	74	223977	61	42674	12	5.7	72	8.9	69	8.9	68	9.3	58	6.8	76	6.1	68
Male					187063	4029	59551	32	127512	68	102340	55	15986	9	5.6	70	8.6	66	8.5	65	8.6	54	6.6	73	5.8	65
Female					180873	4214	37941	21	142932	79	121635	67	26687	15	5.9	73	9.3	72	9.4	72	9.9	62	7.1	79	6.3	71
No Information Provided			10	3808	5	50	5	50	2	20	1	10	4.1	51	7.9	61	6.5	50	7.4	46	6.1	68	5.6	62		
Hispanic/Latino			191522	4005	61728	32	129794	68	102305	53	13025	7	5.5	69	8.5	65	8.4	65	8.7	54	6.5	73	5.7	64		
American Indian or Alaska Native			1147	4106	305	27	842	73	705	61	119	10	5.7	71	9.0	69	8.8	68	9.2	58	6.8	76	6.0	67		
Asian			17917	4629	1479	8	16438	92	15566	87	7253	40	6.7	84	10.5	81	10.9	84	11.8	74	7.7	85	7.6	85		
Black or African American			45469	3947	16785	37	28684	63	21816	48	2585	6	5.2	65	8.2	63	8.1	62	8.4	52	6.4	71	5.6	62		
Native Hawaiian or Other Pacific Islander			537	4110	148	28	389	72	330	61	57	11	5.5	69	8.8	67	8.7	67	9.6	60	6.7	74	6.2	68		
White			102222	4311	15383	15	86839	85	76791	75	18139	18	6.2	78	9.8	76	9.8	75	10.2	64	7.4	82	6.7	74		
Two or More Races			8532	4277	1461	17	7071	83	6142	72	1429	17	6.1	77	9.6	74	9.6	74	10.0	63	7.2	80	6.6	73		
No Information Provided			600	4057	208	35	392	65	322	54	67	11	5.5	69	8.6	66	8.5	65	8.8	55	6.6	73	5.9	66		
Economically Disadvantaged			Yes	198873	3947	71986	36	126887	64	96840	49	10415	5	5.3	67	8.2	63	8.1	62	8.4	52	6.4	71	5.6	62	
			No	168531	4325	25269	15	143262	85	126904	75	32231	19	6.2	78	9.8	76	9.9	76	10.3	64	7.3	81	6.7	75	
			No Information Provided	542	3883	242	45	300	55	233	43	28	5	5.0	63	8.0	61	7.7	59	7.7	48	6.3	70	5.4	59	
Title I, Part A			Participants	158473	3998	52836	33	105637	67	83179	52	11024	7	5.5	68	8.4	65	8.3	64	8.6	54	6.5	72	5.7	64	
			Nonparticipants	208933	4213	44426	21	164507	79	140564	67	31623	15	6.0	75	9.3	72	9.3	72	9.7	61	7.1	78	6.3	71	
			No Information Provided	540	3895	235	44	305	56	234	43	27	5	5.0	63	8.0	62	7.7	59	7.9	49	6.3	70	5.4	60	
Migrant			Yes	1249	3795	603	48	646	52	465	37	29	2	4.9	61	7.4	57	7.2	56	7.7	48	5.8	64	5.1	56	
			No	366092	4122	96629	26	269463	74	223252	61	42615	12	5.7	72	9.0	69	8.9	68	9.3	58	6.8	76	6.1	68	
			No Information Provided	605	3879	265	44	340	56	260	43	30	5	5.0	63	8.0	61	7.7	59	7.7	48	6.2	69	5.4	60	
Limited English Proficient			Current LEP	52785	3619	33350	63	19435	37	11218	21	322	1	4.3	54	6.4	49	6.2	48	6.7	42	5.3	59	4.5	50	
			Non-LEP (Monitored 1st Year)	2311	4129	412	18	1899	82	1509	65	144	6	6.0	75	9.1	70	9.2	71	9.4	59	6.9	77	6.3	70	
			Non-LEP (Monitored 2nd Year)	3718	4059	818	22	2900	78	2105	57	170	5	5.9	73	8.9	68	8.7	67	9.2	58	6.7	75	6.0	67	
			Non-LEP (Monitored 3rd Year)	3248	4204	381	12	2867	88	2387	73	239	7	6.2	78	9.5	73	9.5	73	9.9	62	7.1	79	6.5	72	
			Non-LEP (Monitored 4th Year)	7698	4199	934	12	6764	88	5591	73	509	7	6.2	78	9.6	74	9.6	74	9.7	61	7.1	79	6.4	71	
			Non-LEP (Post Monitoring)	16781	4298	1776	11	15005	89	13081	78	2115	13	6.4	80	9.9	76	10.0	77	10.2	64	7.3	82	6.7	75	
			Other Non-LEP	280767	4202	59557	21	221210	79	187808	67	39142	14	6.0	74	9.3	72	9.3	72	9.7	60	7.1	79	6.3	70	
			No Information Provided	638	3896	269	42	369	58	278	44	33	5	5.1	64	8.1	62	7.8	60	7.8	49	6.3	70	5.4	60	
Bilingual			Participants	687	4147	159	23	528	77	455	66	69	10	5.9	74	9.1	70	9.1	70	9.6	60	6.9	76	6.3	70	
			Nonparticipants	366639	4120	97059	26	269580	74	223269	61	42578	12	5.7	72	8.9	69	8.9	68	9.3	58	6.8	76	6.1	68	
			No Information Provided	620	3863	279	45	341	55	253	41	27	4	5.0	62	7.8	60	7.6	58	7.7	48	6.2	69	5.3	59	
ESL			Participants	45211	3607	29052	64	16159	36	9217	20	251	1	4.2	53	6.4	49	6.1	47	6.6	41	5.2	58	4.5	50	
			Nonparticipants	322102	4193	68170	21	253932	79	214492	67	42395	13	6.0	74	9.3	72	9.3	71	9.6	60	7.0	78	6.3	70	
			No Information Provided	633	3876	275	43	358	57	268	42	28	4	5.0	63	8.0	61	7.7	59	7.8	48	6.2	69	5.4	60	
Special Education			Yes	30138	3506	22515	75	7623	25	4197	14	220	1	3.9	49	5.9	45	5.6	43	5.8	36	4.9	55	3.9	44	
			No	337266	4175	74743	22	262523	78	219549	65	42429	13	5.9	74	9.2	71	9.2	71	9.6	60	7.0	78	6.3	70	
			No Information Provided	542	3882	239	44	303	56	231	43	25	5	5.0	63	8.0	62	7.7	59	7.8	49	6.3	69	5.4	60	
Gifted/Talented			Participants	38026	4707	928	2	37098	98	35926	94	15776	41	7.0	88	11.4	85	11.4	88	12.0	75	8.0	89	7.9	87	
			Nonparticipants	329336	4053	96312	29	233024	71	187805	57	26871	8	5.6	70	8.7	67	8.6	66	9.0	56	6.7	74	5.9	65	
			No Information Provided	584	3878	257	44	327	56	246	42	27	5	5.0	63	8.0	61	7.7	59	7.7	48	6.2	69	5.4	60	
At-Risk			Yes	177489	3797	82379	46	95110	54	63543	36	3015	2	4.9	61	7.5	57	7.3	56	7.6	48	6.0	67	5.1	56	
			No	189947	4423	14896	8	175051	92	160216	84	39635	21	6.5	82	10.3	79	10.4	80	10.8	67	7.6	84	7.1	78	
			No Information Provided	510	3891	222	44	288	56	218	43	24	5	5.0	63	8.0	62	7.7	59	7.9	49	6.3	70	5.4	60	

* Results for students who took the test with the Braille, American Sign Language videos accommodation, or the paper STAAR with embedded supports are not included in the reporting category results.



STATE OF TEXAS ASSESSMENTS OF ACADEMIC READINESS
Constructed Responses Summary Report
ENGLISH II
First-Time Tested Students

STATEWIDE

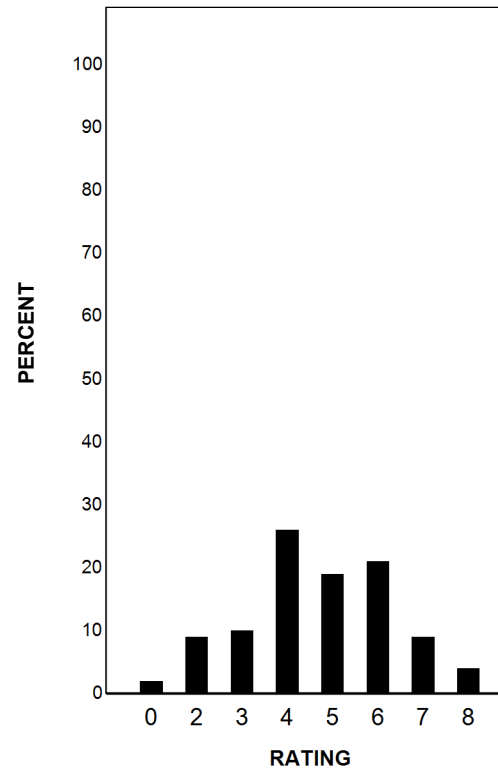
Report Date: SPRING 2021
Date of Testing: SPRING 2021

--- = No Data Reported For Fewer Than Five Students

Written Composition Rating Summary*

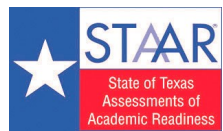
Persuasive Composition

Rating	#	%
0	6641	2
2	27930	9
3	28496	10
4	77388	26
5	57700	19
6	63251	21
7	25963	9
8	11584	4
Total	298953	100



Each composition has been scored independently by two readers. The written composition rating of 0-8 represents the summation of these scores.

* Results for students who took the test with the Braille, American Sign Language videos accommodation, or the paper STAAR with embedded supports are not included in this report.



STATE OF TEXAS ASSESSMENTS OF ACADEMIC READINESS Constructed Responses Summary Report - DO (Second Base Form)**

STATEWIDE

ENGLISH II First-Time Tested Students

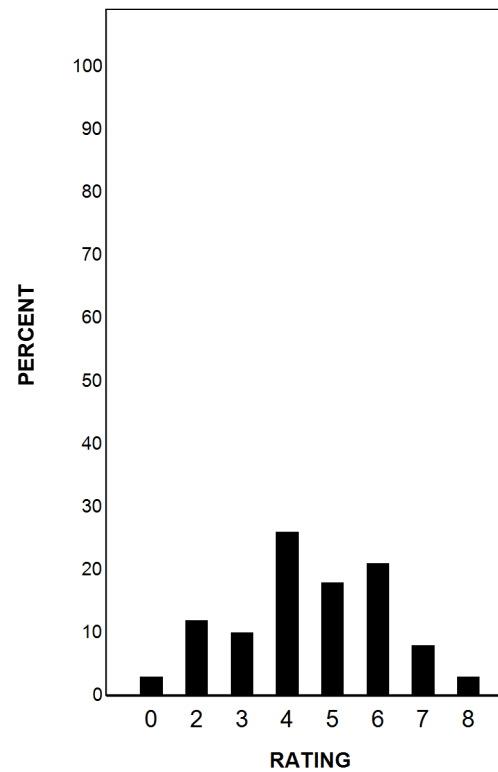
Report Date: SPRING 2021
Date of Testing: SPRING 2021

--- = No Data Reported For Fewer Than Five Students

Written Composition Rating Summary*

Persuasive Composition

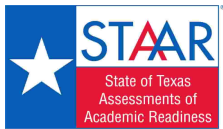
Rating	#	%
0	2102	3
2	8122	12
3	6846	10
4	17617	26
5	12168	18
6	14688	21
7	5271	8
8	2057	3
Total	68871	100



Each composition has been scored independently by two readers. The written composition rating of 0-8 represents the summation of these scores.

* Results for students who took the test with the Braille, American Sign Language videos accommodation, or the paper STAAR with embedded supports are not included in this report.

**Test form version DO specifies that a secondary form was offered to the candidate during the 5 week extended period of testing.



STATE OF TEXAS ASSESSMENTS OF ACADEMIC READINESS

Summary Report

ENGLISH II

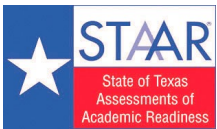
Retested Students

STATEWIDE

Report Date: SPRING 2021
Date of Testing: SPRING 2021

Administration Summary			Number of Students Tested	Average Scale Score	Results for Each Reporting Category*																				
					Number	Percent	Did Not Meet		Approaches		Meets		Masters		Number of Points Possible						Number of Points Scored				
1	2	3					4	5	6	Understanding/Analysis Across Genres		Understanding/Analysis of Literary Texts		Understanding/Analysis of Informational Texts		Composition		Revision		Editing					
		8			13		13		16		9		9												
		#			%	#	%	#	%	#	%	#	%	#	%	#	%	#	%	#	%				
All Students	25613	78			3510	19843	77	5770	23	1870	7	2	0	3.8	48	5.7	44	5.3	41	6.6	41	4.9	55	4.1	46
Male	15460				3484	12250	79	3210	21	1040	7	1	0	3.8	48	5.5	43	5.2	40	6.3	39	4.8	54	4.1	45
Female	10153				3550	7593	75	2560	25	830	8	1	0	3.9	48	5.9	45	5.6	43	7.1	44	5.1	56	4.2	47
No Information Provided	0				---	---	---	---	---	---	---	---	---	---	---	---	---	---	---	---	---	---	---	---	---
Hispanic/Latino	17675				3504	13816	78	3859	22	1205	7	1	0	3.8	48	5.6	43	5.3	41	6.6	41	4.9	54	4.1	46
American Indian or Alaska Native	72		3595	50	69	22	31	10	14	0	0	4.1	52	6.1	47	6.1	47	7.1	44	5.4	60	4.3	48		
Asian	560		3486	443	79	117	21	39	7	0	0	3.4	43	5.4	42	5.2	40	6.6	41	4.8	53	4.2	47		
Black or African American	4333		3509	3358	77	975	23	320	7	0	0	3.8	48	5.8	45	5.4	41	6.5	41	4.9	55	4.2	46		
Native Hawaiian or Other Pacific Islander	32		3462	26	81	6	19	2	6	0	0	4.0	50	5.1	39	4.6	35	6.1	38	5.0	56	4.3	48		
White	2596		3549	1912	74	684	26	253	10	1	0	4.0	50	5.8	45	5.3	41	6.9	43	5.3	59	4.3	48		
Two or More Races	278		3566	195	70	83	30	33	12	0	0	4.0	50	6.1	47	5.6	43	6.9	43	5.4	60	4.4	49		
No Information Provided	67		3586	43	64	24	36	8	12	0	0	4.1	51	6.5	50	6.0	46	6.5	41	5.2	58	4.4	49		
Economically Disadvantaged		Yes	19490	3500	15310	79	4180	21	1304	7	0	0	3.8	47	5.6	43	5.3	41	6.5	41	4.9	54	4.1	46	
		No	6053	3544	4484	74	1569	26	558	9	2	0	4.0	50	5.9	45	5.5	42	6.8	42	5.1	57	4.2	47	
		No Information Provided	70	3525	49	70	21	30	8	11	0	0	3.9	49	5.9	46	5.6	43	6.1	38	4.9	54	4.1	46	
Title I, Part A		Participants	15376	3498	12097	79	3279	21	1006	7	2	0	3.8	47	5.6	43	5.3	41	6.5	41	4.8	54	4.1	46	
		Nonparticipants	10176	3528	7708	76	2468	24	856	8	0	0	3.9	49	5.8	44	5.4	41	6.7	42	5.1	57	4.2	46	
		No Information Provided	61	3568	38	62	23	38	8	13	0	0	4.1	51	6.4	50	5.9	45	6.4	40	5.0	56	4.2	47	
Migrant		Yes	205	3482	167	81	38	19	12	6	0	0	3.7	47	5.6	43	5.1	40	6.5	41	4.6	51	3.9	43	
		No	25338	3510	19630	77	5708	23	1849	7	2	0	3.8	48	5.7	44	5.3	41	6.6	41	4.9	55	4.1	46	
		No Information Provided	70	3568	46	66	24	34	9	13	0	0	4.0	50	6.4	49	5.8	45	6.4	40	5.0	56	4.4	49	
Limited English Proficient		Current LEP	10579	3435	9068	86	1511	14	360	3	0	0	3.5	43	5.2	40	4.9	38	6.2	39	4.5	50	3.9	43	
		Non-LEP (Monitored 1st Year)	158	3492	120	76	38	24	11	7	0	0	3.9	48	5.6	43	5.3	40	6.6	41	4.7	53	4.2	47	
		Non-LEP (Monitored 2nd Year)	209	3640	131	63	78	37	22	11	0	0	4.5	56	6.7	51	6.3	49	7.2	45	5.5	61	4.5	50	
		Non-LEP (Monitored 3rd Year)	215	3652	125	58	90	42	29	13	0	0	4.3	54	6.5	50	6.3	49	7.5	47	5.5	61	4.7	52	
		Non-LEP (Monitored 4th Year)	403	3671	243	60	160	40	53	13	0	0	4.5	56	6.7	52	6.4	49	7.6	47	5.5	61	4.7	52	
		Non-LEP (Post Monitoring)	345	3659	215	62	130	38	49	14	0	0	4.5	57	6.5	50	6.4	49	7.3	46	5.5	61	4.8	53	
		Other Non-LEP	13623	3556	9886	73	3737	27	1337	10	2	0	4.1	51	6.0	46	5.6	43	6.8	43	5.2	58	4.3	48	
		No Information Provided	81	3528	55	68	26	32	9	11	0	0	4.0	50	6.1	47	5.4	42	6.2	39	5.0	55	4.2	46	
Bilingual		Participants	35	3670	23	66	12	34	6	17	0	0	4.7	59	6.6	51	7.1	55	7.2	45	5.2	58	4.4	49	
		Nonparticipants	25506	3510	19775	78	5731	22	1855	7	2	0	3.8	48	5.7	44	5.3	41	6.6	41	4.9	55	4.1	46	
		No Information Provided	72	3569	45	63	27	38	9	13	0	0	4.1	51	6.5	50	5.8	44	6.5	41	5.0	55	4.2	46	
ESL		Participants	9645	3433	8281	86	1364	14	320	3	0	0	3.5	43	5.2	40	4.9	38	6.2	39	4.5	50	3.9	43	
		Nonparticipants	15892	3557	11513	72	4379	28	1541	10	2	0	4.1	51	6.0	46	5.6	43	6.8	43	5.2	58	4.3	48	
		No Information Provided	76	3563	49	64	27	36	9	12	0	0	4.0	50	6.4	49	5.8	44	6.5	41	4.9	55	4.3	47	
Special Education		Yes	1949	3401	1657	85	292	15	93	5	0	0	3.5	44	5.1	39	4.8	37	5.7	35	4.4	49	3.7	41	
		No	23589	3519	18137	77	5452	23	1769	7	2	0	3.9	48	5.7	44	5.4	41	6.7	42	5.0	55	4.2	46	
		No Information Provided	75	3561	49	65	26	35	8	11	0	0	4.1	51	6.4	49	5.7	44	6.3	39	5.1	57	4.2	47	
Gifted/Talented		Participants	114	3696	65	57	49	43	24	21	0	0	4.9	61	7.0	54	6.1	47	7.6	47	5.5	62	4.9	55	
		Nonparticipants	25424	3509	19727	78	5697	22	1838	7	2	0	3.8	48	5.7	44	5.3	41	6.6	41	4.9	55	4.1	46	
		No Information Provided	75	3532	51	68	24	32	8	11	0	0	4.1	51	6.3	48	5.4	42	6.0	38	5.0	56	4.1	46	
At-Risk		Yes	24030	3504	18797	78	5233	22	1654	7	2	0	3.8	48	5.6	43	5.3	41	6.6	41	4.9	54	4.1	46	
		No	1526	3609	1011	66	515	34	208	14	0	0	4.3	54	6.4	49	5.9	45	7.1	44	5.4	60	4.5	50	
		No Information Provided	57	3609	35	61	22	39	8	14	0	0	4.3	54	6.7	52	6.1	47	6.6	41	5.3	59	4.3	48	

* Results for students who took the test with the Braille, American Sign Language videos accommodation, or the paper STAAR with embedded supports are not included in the reporting category results.



STATE OF TEXAS ASSESSMENTS OF ACADEMIC READINESS
Constructed Responses Summary Report
ENGLISH II
Retested Students

STATEWIDE

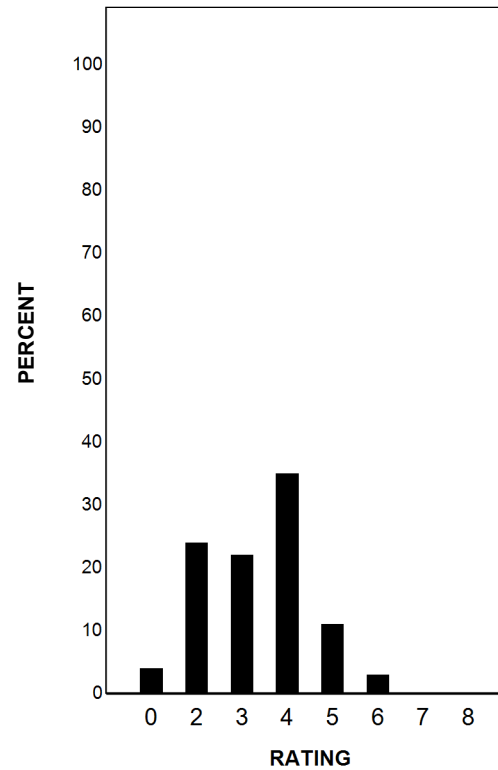
Report Date: SPRING 2021
Date of Testing: SPRING 2021

--- = No Data Reported For Fewer Than Five Students

Written Composition Rating Summary*

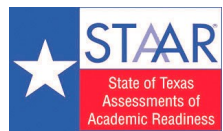
Persuasive Composition

Rating	#	%
0	844	4
2	4918	24
3	4542	22
4	7135	35
5	2152	11
6	707	3
7	91	0
8	7	0
Total	20396	100



Each composition has been scored independently by two readers. The written composition rating of 0-8 represents the summation of these scores.

* Results for students who took the test with the Braille, American Sign Language videos accommodation, or the paper STAAR with embedded supports are not included in this report.



STATE OF TEXAS ASSESSMENTS OF ACADEMIC READINESS Constructed Responses Summary Report - DO (Second Base Form)**

STATEWIDE

ENGLISH II Retested Students

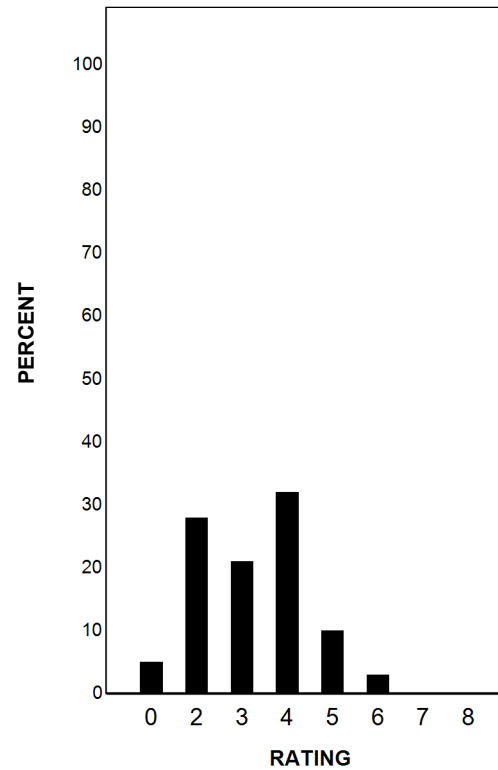
Report Date: SPRING 2021
Date of Testing: SPRING 2021

--- = No Data Reported For Fewer Than Five Students

Written Composition Rating Summary*

Persuasive Composition

Rating	#	%
0	271	5
2	1445	28
3	1103	21
4	1687	32
5	504	10
6	175	3
7	15	0
8	2	0
Total	5202	100



Each composition has been scored independently by two readers. The written composition rating of 0-8 represents the summation of these scores.

* Results for students who took the test with the Braille, American Sign Language videos accommodation, or the paper STAAR with embedded supports are not included in this report.

**Test form version DO specifies that a secondary form was offered to the candidate during the 5 week extended period of testing.