

# STATE OF TEXAS ASSESSMENTS OF ACADEMIC READINESS

## Summary Report

### ENGLISH II

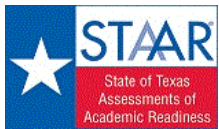
#### All Students

STATEWIDE

Report Date: SUMMER 2018  
Date of Testing: SUMMER 2018

Administration Summary			Number of Students Tested	Average Scale Score	Did Not Meet				Approaches				Meets				Masters				Results for Each Reporting Category*											
																					Number Percent		1		2		3		4		5	
Legend			Number of Points Possible																													
--- = No Data Reported For Fewer Than Five Students			8		13				13				16				9				9											
			Number of Points Scored																													
			#		#		#		#		#		#		#		#		#		#		#		#		#					
<b>All Students</b>			53376	3489	41386	78	11990	22	3693	7	82	0	3.9	49	6.5	50	6.1	47	7.0	44	4.6	51	4.8	53								
Male			32001	3450	25672	80	6329	20	1929	6	22	0	3.7	47	6.3	48	5.9	45	6.7	42	4.5	50	4.6	51								
Female			21368	3547	15710	74	5658	26	1764	8	60	0	4.1	51	6.8	52	6.5	50	7.4	46	4.6	51	5.1	56								
No Information Provided			7	3601	4	57	3	43	0	0	0	0	5.0	63	6.9	53	6.0	46	8.0	50	5.0	56	5.6	62								
Hispanic/Latino			33669	3473	26717	79	6952	21	1941	6	23	0	3.8	48	6.3	49	6.1	47	6.9	43	4.5	50	4.8	53								
American Indian or Alaska Native			185	3517	136	74	49	26	9	5	0	0	4.0	51	6.8	52	6.3	48	6.8	42	4.5	50	5.0	55								
Asian			1113	3529	800	72	313	28	105	9	9	1	4.0	51	6.3	48	6.2	48	7.1	45	4.6	51	5.4	60								
Black or African American			9208	3472	7286	79	1922	21	522	6	4	0	3.9	48	6.4	49	6.0	46	6.9	43	4.5	50	4.8	54								
Native Hawaiian or Other Pacific Islander			84	3476	64	76	20	24	8	10	0	0	3.6	45	6.5	50	6.3	49	6.9	43	4.3	48	5.0	55								
White			8441	3557	5918	70	2523	30	1035	12	40	0	4.2	53	7.1	54	6.3	49	7.2	45	4.9	55	4.8	54								
Two or More Races			621	3560	426	69	195	31	68	11	5	1	4.1	52	6.9	53	6.3	48	7.3	46	4.9	55	4.9	55								
No Information Provided			55	3508	39	71	16	29	5	9	1	2	4.3	54	6.4	49	6.1	47	6.6	41	4.7	52	4.9	54								
Economically Disadvantaged			Yes	38646	3462	31013	80	7633	20	2031	5	19	0	3.8	47	6.3	48	6.0	46	6.8	43	4.5	50	4.7	53							
			No	14679	3558	10335	70	4344	30	1658	11	62	0	4.2	52	7.0	53	6.5	50	7.3	46	4.8	54	5.0	55							
			No Information Provided	51	3499	38	75	13	25	4	8	1	2	4.4	55	6.1	47	6.0	46	6.5	41	4.5	50	5.0	55							
Title I, Part A			Participants	30540	3466	24373	80	6167	20	1747	6	16	0	3.8	47	6.3	48	6.0	46	6.9	43	4.5	50	4.8	53							
			Nonparticipants	22786	3519	16976	75	5810	25	1942	9	65	0	4.0	51	6.7	52	6.2	48	7.1	44	4.7	52	4.9	54							
			No Information Provided	50	3515	37	74	13	26	4	8	1	2	4.4	55	6.4	49	6.0	46	6.5	41	4.6	51	5.0	56							
Migrant			Yes	444	3437	364	82	80	18	26	6	0	0	3.6	45	6.1	47	5.8	45	6.8	42	4.4	49	4.7	52							
			No	52803	3489	40927	78	11876	22	3651	7	80	0	3.9	49	6.5	50	6.1	47	7.0	44	4.6	51	4.8	53							
			No Information Provided	129	3472	95	74	34	26	16	12	2	2	4.1	51	6.2	48	6.0	46	6.4	40	4.4	49	4.9	55							
Limited English Proficient			Current LEP	14905	3376	13113	88	1792	12	350	2	0	0	3.5	44	5.6	43	5.4	42	6.4	40	4.1	46	4.6	51							
			Non-LEP (Monitored 1st Year)	528	3604	340	64	188	36	48	9	0	0	4.1	51	6.9	53	7.2	56	7.6	48	5.1	57	5.2	58							
			Non-LEP (Monitored 2nd Year)	1090	3608	734	67	356	33	87	8	0	0	4.1	51	7.2	55	7.1	55	7.7	48	5.1	57	5.2	58							
			Other Non-LEP	36800	3529	27160	74	9640	26	3202	9	81	0	4.0	50	6.8	52	6.3	49	7.2	45	4.7	53	4.9	54							
			No Information Provided	53	3567	39	74	14	26	6	11	1	2	4.6	58	6.9	53	6.4	49	7.0	44	4.7	52	4.9	55							
Bilingual			Participants	48	3597	34	71	14	29	4	8	0	0	4.3	53	6.6	51	7.2	55	7.8	49	4.7	52	5.6	63							
			Nonparticipants	53269	3488	41309	78	11960	22	3683	7	81	0	3.9	49	6.5	50	6.1	47	7.0	44	4.6	51	4.8	53							
			No Information Provided	59	3543	43	73	16	27	6	10	1	2	4.5	56	6.7	51	6.3	48	6.7	42	4.6	51	5.1	56							
ESL			Participants	14428	3374	12691	88	1737	12	337	2	0	0	3.5	44	5.6	43	5.4	41	6.3	40	4.1	46	4.6	51							
			Nonparticipants	38892	3531	28654	74	10238	26	3350	9	81	0	4.0	50	6.8	52	6.4	49	7.2	45	4.7	53	4.9	54							
			No Information Provided	56	3555	41	73	15	27	6	11	1	2	4.5	57	6.7	52	6.3	48	6.9	43	4.7	52	5.0	56							
Special Education			Yes	8781	3341	7845	89	936	11	198	2	0	0	3.6	45	5.7	44	5.1	40	5.9	37	4.1	45	4.1	45							
			No	44548	3517	33507	75	11041	25	3491	8	81	0	3.9	49	6.6	51	6.3	48	7.2	45	4.7	52	4.9	55							
			No Information Provided	47	3552	34	72	13	28	4	9	1	2	4.6	57	6.6	51	6.4	49	6.8	42	4.5	50	5.1	57							
Gifted/Talented			Participants	373	3979	131	35	242	65	161	43	26	7	5.3	66	9.0	69	8.9	69	9.2	58	6.1	67	6.3	70							
			Nonparticipants	52952	3485	41218	78	11734	22	3527	7	55	0	3.9	49	6.5	50	6.1	47	7.0	43	4.6	51	4.8	53							
			No Information Provided	51	3543	37	73	14	27	5	10	1	2	4.5	56	6.5	50	6.3	48	6.7	42	4.6	51	5.0	56							
At-Risk			Yes	47140	3458	38079	81	9061	19	2350	5	13	0	3.8	48	6.3	48	5.9	45	6.8	43	4.5	50	4.7	52							
			No	6188	3717	3273	53	2915	47	1337	22	68	1	4.6	57	7.8	60	7.6	58	8.1	50	5.4	60	5.6	62							
			No Information Provided	48	3561	34	71	14	29	6	13	1	2	4.5	56	6.5	50	6.2	48	6.8	43	4.8	54	5.1	57							
Career/Technical Education			Participants	41558	3494	32173	77	9385	23	2813	7	46	0	3.9	49	6.5	50	6.1	47	7.0	44	4.6	51	4.8	53							
			Nonparticipants	11754	3469	9163	78	2591	22	874	7	35	0	3.9	48	6.3	49	6.0	46	6.8	43	4.5	50	4.8	53							
			No Information Provided	64	3413	50	78	14	22	6	9	1	2	3.9	49	6.0	46	5.7	44	6.0	38	4.4	49	4.5	51							

\* Students who took the paper STAAR with embedded supports version of the test are not included in the reporting category results.



STATE OF TEXAS ASSESSMENTS OF ACADEMIC READINESS  
*Constructed Responses Summary Report*  
**ENGLISH II**  
**All Students**

STATEWIDE

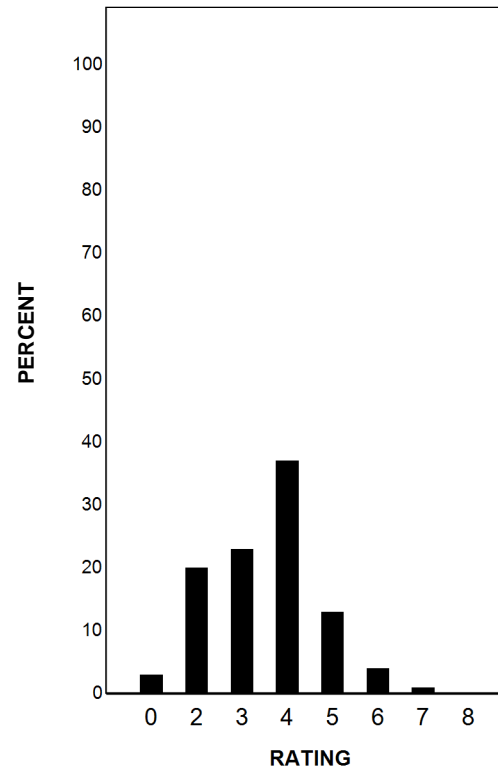
Report Date: SUMMER 2018  
Date of Testing: SUMMER 2018

--- = No Data Reported For Fewer Than Five Students

**Written Composition Rating Summary\***

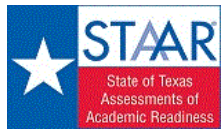
**Persuasive Composition**

Rating	#	%
0	1639	3
2	10556	20
3	12220	23
4	19598	37
5	6807	13
6	2206	4
7	291	1
8	50	0
Total	53367	100



Each composition has been scored independently by two readers. The written composition rating of 0-8 represents the summation of these scores.

\* Students who took the paper STAAR with embedded supports version of the test are not included in this report.



# STATE OF TEXAS ASSESSMENTS OF ACADEMIC READINESS

## Summary Report

### ENGLISH II

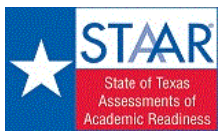
#### First-Time Tested Students

STATEWIDE

Report Date: SUMMER 2018  
Date of Testing: SUMMER 2018

Administration Summary			Number of Students Tested	Average Scale Score	Did Not Meet				Approaches				Meets				Masters				Results for Each Reporting Category*											
																					Number Percent		1		2		3		4		5	
		Understanding/ Analysis Across Genres		Understanding/ Analysis of Literary Texts		Understanding/ Analysis of Informational Texts		Composition		Revision		Editing		8		13		16		9		9										
Legend		Number of Points Possible		Number of Points Scored		#		#		#		#		#		#		#		#		#										
--- = No Data Reported For Fewer Than Five Students				# %		# %		# %		# %		# %		# %		# %		# %		# %		# %										
<b>All Students</b>		1598	3862	652	41	946	59	694	43	77	5	5.1	64	8.4	65	8.2	63	8.4	53	5.8	64	6.0	67									
<b>Male</b>		764	3739	365	48	399	52	287	38	21	3	4.7	59	7.9	61	7.7	59	7.7	48	5.6	62	5.7	63									
<b>Female</b>		827	3977	283	34	544	66	407	49	56	7	5.5	69	8.9	68	8.8	68	9.1	57	6.0	66	6.3	70									
<b>No Information Provided</b>		7	3601	4	57	3	43	0	0	0	0	5.0	63	6.9	53	6.0	46	8.0	50	5.0	56	5.6	62									
<b>Hispanic/Latino</b>		708	3770	335	47	373	53	250	35	22	3	4.8	61	8.0	62	7.8	60	8.1	51	5.5	61	5.7	64									
<b>American Indian or Alaska Native</b>		9	3962	3	33	6	67	4	44	0	0	5.7	71	10.1	78	8.0	62	9.1	57	5.8	64	6.3	70									
<b>Asian</b>		48	4050	15	31	33	69	26	54	8	17	5.0	62	8.4	64	9.1	70	9.5	59	6.2	69	6.8	76									
<b>Black or African American</b>		236	3597	139	59	97	41	60	25	4	2	4.1	51	7.2	55	6.8	52	7.2	45	5.2	57	5.3	59									
<b>Native Hawaiian or Other Pacific Islander</b>		10	3487	8	80	2	20	1	10	0	0	3.6	45	5.9	45	6.2	48	6.6	41	4.2	47	5.2	58									
<b>White</b>		517	4095	122	24	395	76	324	63	37	7	6.0	75	9.6	74	9.4	72	9.4	59	6.5	72	6.7	74									
<b>Two or More Races</b>		42	4080	11	26	31	74	25	60	5	12	5.8	72	9.1	70	9.2	71	9.7	60	5.9	65	6.5	72									
<b>No Information Provided</b>		28	3539	19	68	9	32	4	14	1	4	4.6	58	6.5	50	6.3	48	6.6	42	4.4	49	5.0	56									
<b>Economically Disadvantaged</b>		Yes	907	3698	477	53	430	47	278	31	19	2	4.6	57	7.7	59	7.4	57	7.7	48	5.3	59	5.5	61								
		No	659	4101	153	23	506	77	412	63	57	9	5.9	73	9.5	73	9.5	73	9.5	60	6.4	72	6.7	74								
		No Information Provided	32	3570	22	69	10	31	4	13	3	4.5	57	6.5	50	6.2	48	7.3	45	4.7	52	5.1	57									
<b>Title I, Part A</b>		Participants	731	3726	364	50	367	50	257	35	15	2	4.7	58	7.7	59	7.6	58	7.8	49	5.4	60	5.6	62								
		Nonparticipants	836	3990	267	32	569	68	433	52	61	7	5.5	69	9.1	70	8.9	68	9.0	56	6.1	68	6.4	71								
		No Information Provided	31	3598	21	68	10	32	4	13	1	3	4.6	58	6.8	52	6.4	49	7.2	45	4.8	53	5.3	59								
<b>Migrant</b>		Yes	13	3782	5	38	8	62	6	46	0	0	4.1	51	7.8	60	8.0	62	8.8	55	5.6	62	6.5	73								
		No	1533	3869	614	40	919	60	678	44	75	5	5.1	64	8.4	65	8.3	64	8.5	53	5.8	64	6.0	67								
		No Information Provided	52	3665	33	63	19	37	10	19	2	4	4.8	60	7.3	56	7.0	54	7.3	46	5.1	56	5.4	60								
<b>Limited English Proficient</b>		Current LEP	173	3359	147	85	26	15	15	9	0	0	3.6	46	5.4	41	5.4	42	5.8	36	4.2	46	4.6	51								
		Non-LEP (Monitored 1st Year)	7	3504	4	57	3	43	1	14	0	0	4.6	57	7.4	57	5.6	43	6.6	41	4.7	52	4.3	48								
		Non-LEP (Monitored 2nd Year)	18	3779	5	28	13	72	4	22	0	0	4.7	59	8.1	62	8.2	63	8.7	54	5.8	64	5.6	62								
		Other Non-LEP	1365	3935	471	35	894	65	670	49	76	6	5.3	67	8.8	68	8.6	66	8.8	55	6.0	67	6.2	69								
		No Information Provided	35	3591	25	71	10	29	4	11	3	4.6	57	6.9	53	6.5	50	7.2	45	4.8	53	5.0	56									
<b>Bilingual</b>		Participants	1	---	---	---	---	---	---	---	---	---	---	---	---	---	---	---	---	---	---	---	---	---								
		Nonparticipants	1563	3867	628	40	935	60	689	44	76	5	5.1	64	8.4	65	8.3	64	8.4	53	5.8	64	6.0	67								
		No Information Provided	34	3592	24	71	10	29	4	12	3	4.6	58	6.7	52	6.4	50	7.2	45	4.8	53	5.2	58									
<b>ESL</b>		Participants	170	3350	146	86	24	14	13	8	0	0	3.6	46	5.4	42	5.4	41	5.7	35	4.2	46	4.5	50								
		Nonparticipants	1394	3931	482	35	912	65	677	49	76	5	5.3	66	8.8	68	8.6	66	8.8	55	6.0	66	6.2	69								
		No Information Provided	34	3592	24	71	10	29	4	12	3	4.6	58	6.7	52	6.4	50	7.2	45	4.8	53	5.2	58									
<b>Special Education</b>		Yes	169	3322	131	78	38	22	19	11	0	0	3.8	47	6.2	48	5.6	43	5.4	34	4.2	46	4.0	44								
		No	1398	3932	500	36	898	64	671	48	76	5	5.3	66	8.7	67	8.6	66	8.8	55	6.0	66	6.3	70								
		No Information Provided	31	3606	21	68	10	32	4	13	3	4.6	58	6.8	53	6.5	50	7.3	46	4.8	53	5.2	58									
<b>Gifted/Talented</b>		Participants	104	4587	1	1	103	99	100	96	26	25	6.9	87	11.4	88	11.7	90	12.1	75	7.4	82	8.0	89								
		Nonparticipants	1461	3815	629	43	832	57	589	40	50	3	5.0	63	8.2	63	8.0	62	8.2	51	5.7	63	5.9	65								
		No Information Provided	33	3622	22	67	11	33	5	15	3	4.6	58	6.8	53	6.6	51	7.4	46	4.9	55	5.2	58									
<b>At-Risk</b>		Yes	973	3631	564	58	409	42	254	26	13	1	4.5	56	7.4	57	7.0	54	7.3	46	5.1	57	5.3	59								
		No	593	4253	67	11	526	89	435	73	63	11	6.2	78	10.2	78	10.3	79	10.3	65	6.9	76	7.2	80								
		No Information Provided	32	3618	21	66	11	34	5	16	3	4.6	58	6.8	52	6.5	50	7.4	46	4.9	55	5.3	59									
<b>Career/Technical Education</b>		Participants	1012	3875	399	39	613	61	449	44	45	4	5.1	64	8.4	65	8.3	64	8.5	53	5.8	65	6.0	67								
		Nonparticipants	558	3852	234	42	324	58	241	43	31	6	5.2	65	8.4	65	8.1	63	8.3	52	5.7	63	6.0	66								
		No Information Provided	28	3589	19	68	9	32	4	14	4	4.4	55	6.8	52	6.6	51	7.3	46	4.8	53	4.8	53									

\* Students who took the paper STAAR with embedded supports version of the test are not included in the reporting category results.



STATE OF TEXAS ASSESSMENTS OF ACADEMIC READINESS  
*Constructed Responses Summary Report*  
**ENGLISH II**  
First-Time Tested Students

STATEWIDE

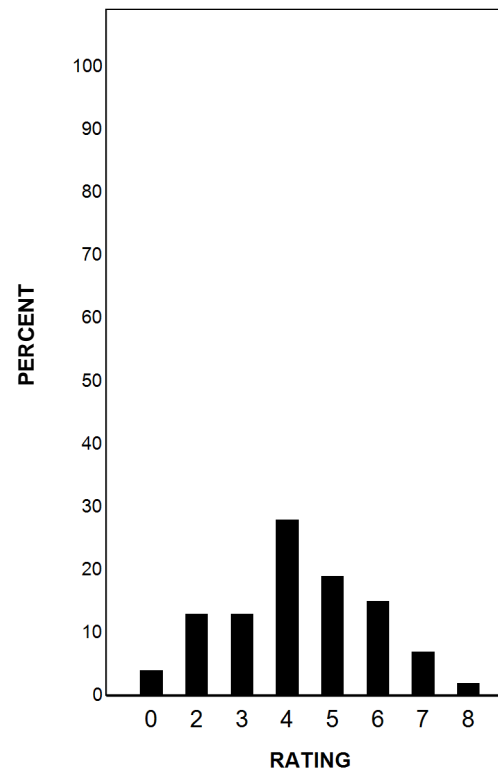
Report Date: SUMMER 2018  
Date of Testing: SUMMER 2018

--- = No Data Reported For Fewer Than Five Students

**Written Composition Rating Summary\***

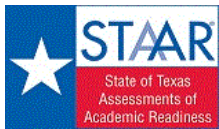
**Persuasive Composition**

Rating	#	%
0	67	4
2	203	13
3	208	13
4	441	28
5	307	19
6	234	15
7	105	7
8	32	2
Total	1597	100



Each composition has been scored independently by two readers. The written composition rating of 0-8 represents the summation of these scores.

\* Students who took the paper STAAR with embedded supports version of the test are not included in this report.



# STATE OF TEXAS ASSESSMENTS OF ACADEMIC READINESS

## Summary Report

### ENGLISH II

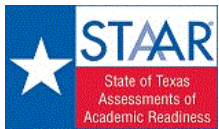
#### Retested Students

STATEWIDE

Report Date: SUMMER 2018  
Date of Testing: SUMMER 2018

Administration Summary			Number of Students Tested	Average Scale Score	Did Not Meet				Approaches				Meets				Masters				Results for Each Reporting Category*											
																					Number Percent		1		2		3		4		5	
		Number Percent		Understanding/ Analysis Across Genres	Understanding/ Analysis of Literary Texts	Understanding/ Analysis of Informational Texts	Composition	Revision	Editing	Number of Points Possible																						
										8		13		13		16		9		9												
		Legend		Number of Points Scored																												
		--- = No Data Reported For Fewer Than Five Students		# %		# %		# %		# %		# %		# %		# %		# %														
<b>All Students</b>			51778	3477	40734	79	11044	21	2999	6	5	0	3.9	48	6.4	49	6.0	46	6.9	43	4.5	50	4.8	53								
Male			31237	3442	25307	81	5930	19	1642	5	1	0	3.7	47	6.2	48	5.8	45	6.6	41	4.5	50	4.6	51								
Female			20541	3530	15427	75	5114	25	1357	7	4	0	4.1	51	6.7	51	6.4	49	7.4	46	4.6	51	5.0	56								
No Information Provided			0	---	---	---	---	---	---	---	---	---	---	---	---	---	---	---	---	---	---	---	---	---								
Hispanic/Latino			32961	3467	26382	80	6579	20	1691	5	1	0	3.8	47	6.3	49	6.0	46	6.9	43	4.5	50	4.7	53								
American Indian or Alaska Native			176	3494	133	76	43	24	5	3	0	0	4.0	50	6.6	51	6.2	48	6.7	42	4.5	50	4.9	54								
Asian			1065	3506	785	74	280	26	79	7	1	0	4.0	50	6.2	47	6.1	47	7.0	44	4.6	51	5.3	59								
Black or African American			8972	3469	7147	80	1825	20	462	5	0	0	3.8	48	6.4	49	6.0	46	6.9	43	4.5	50	4.8	54								
Native Hawaiian or Other Pacific Islander			74	3474	56	76	18	24	7	9	0	0	3.6	45	6.5	50	6.3	49	7.0	44	4.3	48	4.9	55								
White			7924	3522	5796	73	2128	27	711	9	3	0	4.1	52	6.9	53	6.1	47	7.1	44	4.8	54	4.7	53								
Two or More Races			579	3523	415	72	164	28	43	7	0	0	4.0	50	6.8	52	6.1	47	7.2	45	4.8	54	4.8	54								
No Information Provided			27	3475	20	74	7	26	1	4	0	0	4.0	50	6.4	49	5.9	45	6.6	41	4.9	55	4.7	52								
Economically Disadvantaged			Yes 37739	3456	30536	81	7203	19	1753	5	0	0	3.8	47	6.3	48	5.9	46	6.8	43	4.5	49	4.7	52								
			No 14020	3533	10182	73	3838	27	1246	9	5	0	4.1	51	6.8	53	6.3	49	7.2	45	4.8	53	4.9	54								
			No Information Provided 19	3380	16	84	3	16	0	0	0	0	4.1	51	5.5	43	5.6	43	5.3	33	4.1	45	4.7	53								
Title I, Part A			Participants 29809	3459	24009	81	5800	19	1490	5	1	0	3.8	47	6.3	48	6.0	46	6.9	43	4.5	50	4.7	53								
			Nonparticipants 21950	3501	16709	76	5241	24	1509	7	4	0	4.0	50	6.6	51	6.1	47	7.0	44	4.6	52	4.8	53								
			No Information Provided 19	3379	16	84	3	16	0	0	0	0	3.9	49	5.8	45	5.5	42	5.3	33	4.3	48	4.6	51								
Migrant			Yes 431	3427	359	83	72	17	20	5	0	0	3.6	45	6.0	46	5.8	44	6.7	42	4.3	48	4.7	52								
			No 51270	3478	40313	79	10957	21	2973	6	5	0	3.9	48	6.4	49	6.0	46	6.9	43	4.5	50	4.8	53								
			No Information Provided 77	3342	62	81	15	19	6	8	0	0	3.6	45	5.5	42	5.4	41	5.7	36	3.9	44	4.6	51								
Limited English Proficient			Current LEP 14732	3376	12966	88	1766	12	335	2	0	0	3.5	44	5.6	43	5.4	41	6.4	40	4.1	46	4.6	51								
			Non-LEP (Monitored 1st Year) 521	3605	336	64	185	36	47	9	0	0	4.1	51	6.9	53	7.3	56	7.7	48	5.1	57	5.2	58								
			Non-LEP (Monitored 2nd Year) 1072	3606	729	68	343	32	83	8	0	0	4.1	51	7.1	55	7.1	55	7.7	48	5.1	56	5.2	58								
			Other Non-LEP 35435	3513	26689	75	8746	25	2532	7	5	0	4.0	50	6.7	52	6.3	48	7.1	44	4.7	52	4.8	54								
			No Information Provided 18	3521	14	78	4	22	2	11	0	0	4.7	58	6.8	53	6.1	47	6.6	41	4.4	49	4.8	53								
Bilingual			Participants 47	3586	34	72	13	28	3	6	0	0	4.2	53	6.6	51	7.1	55	7.8	49	4.6	51	5.6	62								
			Nonparticipants 51706	3477	40681	79	11025	21	2994	6	5	0	3.9	48	6.4	49	6.0	46	6.9	43	4.5	50	4.8	53								
			No Information Provided 25	3477	19	76	6	24	2	8	0	0	4.2	53	6.6	51	6.0	46	6.1	38	4.4	49	4.8	53								
ESL			Participants 14258	3375	12545	88	1713	12	324	2	0	0	3.5	44	5.6	43	5.4	41	6.3	40	4.1	46	4.6	51								
			Nonparticipants 37498	3516	28172	75	9326	25	2673	7	5	0	4.0	50	6.7	52	6.3	48	7.1	45	4.7	52	4.8	54								
			No Information Provided 22	3499	17	77	5	23	2	9	0	0	4.4	55	6.7	52	6.1	47	6.4	40	4.5	50	4.7	52								
Special Education			Yes 8612	3342	7714	90	898	10	179	2	0	0	3.6	45	5.7	44	5.1	39	5.9	37	4.0	45	4.1	45								
			No 43150	3504	33007	76	10143	24	2820	7	5	0	3.9	49	6.6	50	6.2	48	7.1	45	4.6	52	4.9	54								
			No Information Provided 16	3447	13	81	3	19	0	0	0	0	4.6	57	6.1	47	6.0	46	5.8	36	4.1	45	4.8	53								
Gifted/Talented			Participants 269	3744	130	48	139	52	61	23	0	0	4.7	59	8.1	62	7.9	60	8.1	51	5.6	62	5.7	63								
			Nonparticipants 51491	3476	40589	79	10902	21	2938	6	5	0	3.9	48	6.4	49	6.0	46	6.9	43	4.5	50	4.8	53								
			No Information Provided 18	3398	15	83	3	17	0	0	0	0	4.3	53	5.8	45	5.7	44	5.3	33	4.0	44	4.7	52								
At-Risk			Yes 46167	3455	37515	81	8652	19	2096	5	0	0	3.8	47	6.3	48	5.9	45	6.8	43	4.5	50	4.7	52								
			No 5595	3660	3206	57	2389	43	902	16	5	0	4.4	55	7.6	58	7.3	56	7.8	49	5.2	58	5.4	60								
			No Information Provided 16	3446	13	81	3	19	1	6	0	0	4.2	52	6.0	46	5.5	42	5.8	36	4.6	51	4.8	53								
Career/Technical Education			Participants 40546	3485	31774	78	8772	22	2364	6	1	0	3.9	48	6.5	50	6.1	47	7.0	44	4.6	51	4.8	53								
			Nonparticipants 11196	3450	8929	80	2267	20	633	6	4	0	3.8	47	6.2	48	5.9	45	6.7	42	4.4	49	4.7	52								
			No Information Provided 36	3277	31	86	5	14	2	6	0	0	3.6	45	5.4	42	4.9	38	5.0	31	4.1	45	4.4	49								

\* Students who took the paper STAAR with embedded supports version of the test are not included in the reporting category results.



STATE OF TEXAS ASSESSMENTS OF ACADEMIC READINESS  
*Constructed Responses Summary Report*  
**ENGLISH II**  
Retested Students

STATEWIDE

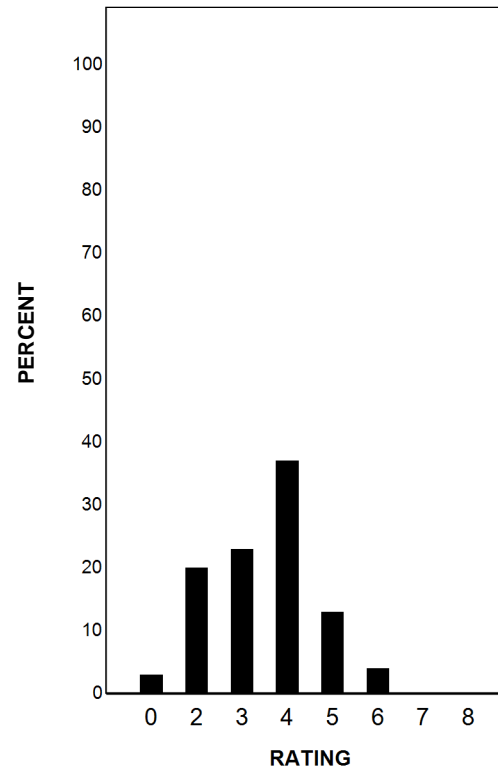
Report Date: SUMMER 2018  
Date of Testing: SUMMER 2018

--- = No Data Reported For Fewer Than Five Students

**Written Composition Rating Summary\***

**Persuasive Composition**

Rating	#	%
0	1572	3
2	10353	20
3	12012	23
4	19157	37
5	6500	13
6	1972	4
7	186	0
8	18	0
Total	51770	100



Each composition has been scored independently by two readers. The written composition rating of 0-8 represents the summation of these scores.

\* Students who took the paper STAAR with embedded supports version of the test are not included in this report.