

# STATE OF TEXAS ASSESSMENTS OF ACADEMIC READINESS

## Summary Report

### ENGLISH II

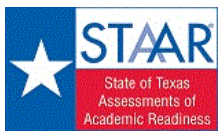
#### All Students

STATEWIDE

Report Date: SUMMER 2017  
Date of Testing: SUMMER 2017

Administration Summary			Number of Students Tested	Average Scale Score	Results for Each Reporting Category*																					
					Number	Percent	Did Not Meet		Approaches		Meets		Masters		1		2		3		4		5		6	
		#					%	#	%	#	%	#	%	Understanding/Analysis Across Genres		Understanding/Analysis of Literary Texts		Understanding/Analysis of Informational Texts		Composition		Revision		Editing		
		Number of Points Possible																								
		8			13		13		16		9		9													
Number of Points Scored																										
		#			%	#	%	#	%	#	%	#	%	#	%	#	%	#	%	#	%	#	%			
<b>All Students</b>					65540	3519	49800	76	15740	24	4056	6	88	0	4.1	52	6.4	49	6.3	48	6.9	43	5.0	55	4.7	52
<b>Male</b>					38874	3483	30505	78	8369	22	2098	5	22	0	4.0	49	6.2	48	6.1	47	6.6	41	4.9	55	4.5	50
<b>Female</b>					26659	3571	19291	72	7368	28	1956	7	66	0	4.4	55	6.6	51	6.5	50	7.3	46	5.1	57	4.9	55
<b>No Information Provided</b>			7	3733	4	57	3	43	2	29	0	0	4.9	61	7.3	56	8.7	67	6.0	38	5.9	65	6.4	71		
<b>Hispanic/Latino</b>			41241	3509	31901	77	9340	23	2155	5	16	0	4.1	51	6.3	49	6.3	48	6.8	43	4.9	54	4.6	51		
<b>American Indian or Alaska Native</b>			207	3541	150	72	57	28	19	9	0	0	4.2	53	6.4	49	6.6	51	6.8	42	5.1	57	4.8	53		
<b>Asian</b>			1400	3540	1013	72	387	28	113	8	8	1	4.0	51	6.3	49	6.4	49	7.0	44	4.8	53	5.1	57		
<b>Black or African American</b>			11284	3492	8888	79	2396	21	519	5	5	0	4.1	51	6.2	47	6.0	47	6.8	42	4.9	55	4.6	52		
<b>Native Hawaiian or Other Pacific Islander</b>			95	3519	74	78	21	22	6	6	0	0	3.9	48	6.3	49	6.3	49	7.3	45	4.6	51	4.7	53		
<b>White</b>			10511	3580	7227	69	3284	31	1166	11	54	1	4.3	53	6.7	52	6.5	50	7.1	45	5.4	60	4.9	54		
<b>Two or More Races</b>			756	3583	521	69	235	31	66	9	4	1	4.3	54	6.8	52	6.5	50	7.2	45	5.5	61	4.9	54		
<b>No Information Provided</b>			46	3698	26	57	20	43	12	26	1	2	4.4	55	7.3	56	7.5	58	7.5	47	5.7	64	5.1	57		
<b>Economically Disadvantaged</b>																										
			Yes	46503	3494	36567	79	9936	21	2202	5	14	0	4.0	51	6.2	48	6.1	47	6.7	42	4.9	54	4.6	51	
			No	18957	3581	13193	70	5764	30	1836	10	72	0	4.3	54	6.7	51	6.6	51	7.2	45	5.3	59	4.9	54	
			No Information Provided	80	3734	40	50	40	50	18	23	2	3	4.3	54	7.7	59	7.7	59	7.5	47	5.7	63	6.2	69	
<b>Title I, Part A</b>																										
			Participants	37378	3498	29213	78	8165	22	1863	5	15	0	4.1	51	6.2	48	6.2	48	6.8	42	4.9	54	4.6	51	
			Nonparticipants	28083	3547	20547	73	7536	27	2176	8	72	0	4.2	52	6.5	50	6.4	49	7.0	44	5.1	57	4.7	53	
			No Information Provided	79	3719	40	51	39	49	17	22	1	1	4.3	54	7.7	59	7.7	59	7.4	46	5.6	62	6.2	68	
<b>Migrant</b>																										
			Yes	593	3457	478	81	115	19	17	3	0	0	4.0	50	5.9	45	6.0	46	6.6	41	4.6	51	4.5	50	
			No	64786	3519	49224	76	15562	24	4008	6	86	0	4.1	52	6.4	49	6.3	48	6.9	43	5.0	55	4.7	52	
			No Information Provided	161	3625	98	61	63	39	31	19	2	1	4.3	54	7.2	55	6.9	53	6.8	43	5.4	60	5.4	60	
<b>Limited English Proficient</b>																										
			Current LEP	16415	3402	14305	87	2110	13	333	2	0	0	3.7	46	5.8	45	5.7	44	6.1	38	4.2	47	4.2	47	
			Non-LEP (Monitored 1st Year)	755	3636	483	64	272	36	57	8	0	0	4.5	57	6.7	52	7.1	55	8.0	50	5.4	60	5.0	56	
			Non-LEP (Monitored 2nd Year)	1321	3641	875	66	446	34	89	7	0	0	4.7	58	7.0	54	7.1	55	7.7	48	5.5	61	5.1	56	
			Other Non-LEP	46967	3554	34095	73	12872	27	3559	8	87	0	4.2	53	6.5	50	6.5	50	7.1	44	5.2	58	4.8	53	
			No Information Provided	82	3713	42	51	40	49	18	22	1	1	4.2	53	7.6	59	7.5	58	7.5	47	5.6	63	6.1	68	
<b>Bilingual</b>																										
			Participants	42	3727	21	50	21	50	9	21	0	0	4.9	61	7.3	56	7.4	57	8.6	54	5.9	65	5.3	59	
			Nonparticipants	65405	3519	49726	76	15679	24	4029	6	87	0	4.1	52	6.4	49	6.3	48	6.9	43	5.0	55	4.7	52	
			No Information Provided	93	3657	53	57	40	43	18	19	1	1	4.1	52	7.4	57	7.3	56	7.1	44	5.4	59	5.8	64	
<b>ESL</b>																										
			Participants	15790	3400	13771	87	2019	13	317	2	0	0	3.7	46	5.8	45	5.7	44	6.1	38	4.2	46	4.2	46	
			Nonparticipants	49660	3557	35979	72	13681	28	3721	7	87	0	4.3	53	6.5	50	6.5	50	7.1	45	5.2	58	4.8	53	
			No Information Provided	90	3673	50	56	40	44	18	20	1	1	4.1	52	7.5	57	7.3	56	7.2	45	5.4	60	5.8	65	
<b>Special Education</b>																										
			Yes	9781	3359	8678	89	1103	11	191	2	3	0	3.5	44	5.8	44	5.4	41	5.5	35	4.3	48	4.0	44	
			No	55674	3547	41076	74	14598	26	3847	7	84	0	4.2	53	6.5	50	6.4	50	7.1	44	5.1	57	4.8	53	
			No Information Provided	85	3680	46	54	39	46	18	21	1	1	4.2	53	7.5	58	7.4	57	7.1	44	5.4	60	6.0	67	
<b>Gifted/Talented</b>																										
			Participants	525	3877	213	41	312	59	167	32	31	6	5.2	65	8.1	62	8.2	63	8.8	55	6.3	70	5.9	66	
			Nonparticipants	64924	3516	49538	76	15386	24	3870	6	55	0	4.1	51	6.3	49	6.3	48	6.9	43	5.0	55	4.6	52	
			No Information Provided	91	3702	49	54	42	46	19	21	2	2	4.3	53	7.6	58	7.5	57	7.1	45	5.5	61	6.1	67	
<b>At-Risk</b>																										
			Yes	56113	3484	44862	80	11251	20	2317	4	11	0	4.0	50	6.2	48	6.1	47	6.7	42	4.8	54	4.5	50	
			No	9346	3726	4897	52	4449	48	1721	18	75	1	4.9	61	7.4	57	7.5	58	8.1	51	5.9	66	5.4	60	
			No Information Provided	81	3745	41	51	40	49	18	22	2	2	4.4	55	7.7	59	7.7	59	7.5	47	5.8	64	6.2	69	
<b>Career/Technical Education</b>																										
			Participants	50391	3527	38145	76	12246	24	3076	6	51	0	4.2	52	6.4	49	6.3	49	6.9	43	5.0	56	4.7	52	
			Nonparticipants	15055	3491	11599	77	3456	23	964	6	36	0	4.0	50	6.3	48	6.1	47	6.7	42	4.8	54	4.6	51	
			No Information Provided	94	3641	56	60	38	40	16	17	1	1	4.1	52	7.3	56	7.0	54	7.0	43	5.3	59	5.8	65	

\* Students who took the paper STAAR with embedded supports version of the test are not included in the reporting category results.



STATE OF TEXAS ASSESSMENTS OF ACADEMIC READINESS  
Constructed Responses Summary Report  
ENGLISH II  
All Students

STATEWIDE

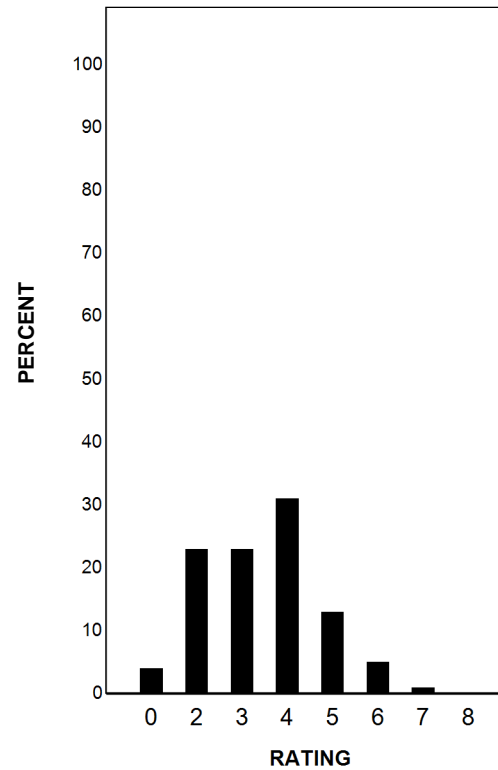
Report Date: SUMMER 2017  
Date of Testing: SUMMER 2017

--- = No Data Reported For Fewer Than Five Students

Written Composition Rating Summary\*

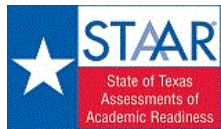
Persuasive Composition

Rating	#	%
0	2397	4
2	14952	23
3	15079	23
4	20309	31
5	8737	13
6	3175	5
7	664	1
8	219	0
Total	65532	100



Each composition has been scored independently by two readers. The written composition rating of 0-8 represents the summation of these scores.

\* Students who took the paper STAAR with embedded supports version of the test are not included in this report.



# STATE OF TEXAS ASSESSMENTS OF ACADEMIC READINESS

## Summary Report

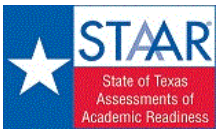
### ENGLISH II

#### First-Time Tested Students

STATEWIDE

Report Date: SUMMER 2017  
Date of Testing: SUMMER 2017

Administration Summary			Number of Students Tested	Average Scale Score	Did Not Meet		Approaches		Meets		Masters		Results for Each Reporting Category													
													1	2	3	4	5	6								
Number	Percent											Understanding/ Analysis Across Genres		Understanding/ Analysis of Literary Texts		Understanding/ Analysis of Informational Texts		Composition		Revision		Editing				
Students Tested			1899	98																						
Students Not Tested																										
Absent			0	0																						
Other			37	2																						
Total Documents Submitted			1936	100																						
Legend			---																							
--- = No Data Reported For Fewer Than Five Students																										
			#		%		#		%		#		%		#		%		#		%		#		%	
<b>All Students</b>			1899	3839	797	42	1102	58	751	40	84	4	5.1	63	8.0	62	8.0	62	8.5	53	6.1	68	5.9	65		
Male			868	3679	464	53	404	47	254	29	20	2	4.7	58	7.4	57	7.4	46	7.4	46	5.7	63	5.3	59		
Female			1024	3975	329	32	695	68	495	48	64	6	5.4	68	8.5	66	8.6	66	9.6	60	6.5	73	6.3	70		
No Information Provided			7	3733	4	57	3	43	2	29	0	0	4.9	61	7.3	56	8.7	67	6.0	38	5.9	65	6.4	71		
Hispanic/Latino			767	3709	402	52	365	48	210	27	15	2	4.8	59	7.4	57	7.4	57	7.9	49	5.7	63	5.4	60		
American Indian or Alaska Native			7	3733	4	57	3	43	3	43	0	0	4.7	59	7.4	57	6.3	48	9.1	57	6.1	68	5.3	59		
Asian			82	4001	25	30	57	70	34	41	7	9	5.0	63	8.7	67	8.5	65	9.4	59	6.5	72	7.2	80		
Black or African American			289	3625	159	55	130	45	76	26	5	2	4.6	57	7.2	55	7.1	55	7.4	46	5.5	61	5.4	60		
Native Hawaiian or Other Pacific Islander			5	3825	2	40	3	60	2	40	0	0	5.2	65	8.8	68	9.0	69	7.2	45	5.6	62	6.0	67		
White			673	4055	172	26	501	74	397	59	52	8	5.6	71	9.1	70	9.1	70	9.7	61	6.8	76	6.5	72		
Two or More Races			46	3908	18	39	28	61	18	39	4	9	5.2	65	8.3	64	8.4	65	9.0	56	6.6	73	5.9	66		
No Information Provided			30	3852	15	50	15	50	11	37	1	3	5.1	63	8.1	62	7.8	60	8.6	54	6.5	72	5.9	65		
Economically Disadvantaged			Yes	953	3642	538	56	415	44	231	24	13	1	4.5	57	7.1	55	7.1	54	7.4	46	5.5	61	5.2	58	
			No	881	4053	232	26	649	74	502	57	69	8	5.7	71	9.0	69	9.1	70	9.8	61	6.8	76	6.5	72	
			No Information Provided	65	3832	27	42	38	58	18	28	2	3	4.7	59	8.2	63	8.0	62	8.1	51	6.1	68	6.8	75	
Title I, Part A			Participants	805	3670	450	56	355	44	207	26	14	2	4.7	59	7.2	56	7.2	55	7.5	47	5.6	62	5.4	60	
			Nonparticipants	1030	3973	320	31	710	69	527	51	69	7	5.4	67	8.6	66	8.7	67	9.4	59	6.6	73	6.2	69	
			No Information Provided	64	3810	27	42	37	58	17	27	1	2	4.6	58	8.2	63	7.9	61	8.0	50	6.1	67	6.7	74	
Migrant			Yes	5	3624	2	40	3	60	0	0	0	0	4.2	53	6.4	49	7.6	58	7.2	45	5.8	64	5.2	58	
			No	1806	3842	755	42	1051	58	724	40	82	5	5.1	64	8.0	62	8.1	62	8.6	54	6.2	68	5.8	65	
			No Information Provided	88	3796	40	45	48	55	27	31	2	2	4.7	59	8.1	62	7.7	59	8.0	50	6.0	66	6.4	71	
Limited English Proficient			Current LEP	142	3391	118	83	24	17	8	6	0	0	3.7	46	5.8	44	5.7	44	5.9	37	4.2	47	4.4	49	
			Non-LEP (Monitored 1st Year)	9	3612	5	56	4	44	0	0	0	0	4.7	58	7.1	55	7.2	56	7.6	47	4.9	54	4.7	52	
			Non-LEP (Monitored 2nd Year)	14	3701	10	71	4	29	3	21	0	0	4.7	59	7.7	59	6.9	53	7.6	47	6.0	67	5.6	62	
			Other Non-LEP	1669	3881	636	38	1033	62	723	43	83	5	5.2	65	8.2	63	8.3	64	8.8	55	6.3	70	6.0	66	
			No Information Provided	65	3793	28	43	37	57	17	26	1	2	4.6	57	8.1	63	7.8	60	7.9	49	6.0	66	6.6	73	
Bilingual			Participants	1	---	---	---	---	---	---	---	---	---	---	---	---	---	---	---	---	---	---	---	---		
			Nonparticipants	1832	3841	768	42	1064	58	734	40	83	5	5.1	64	8.0	62	8.1	62	8.6	54	6.1	68	5.8	65	
			No Information Provided	66	3786	29	44	37	56	17	26	1	2	4.5	57	8.1	62	7.7	59	7.9	49	5.9	66	6.6	73	
ESL			Participants	134	3365	112	84	22	16	6	4	0	0	3.7	46	5.7	44	5.6	43	5.8	36	4.4	46	4.3	48	
			Nonparticipants	1699	3878	656	39	1043	61	728	43	83	5	5.2	65	8.2	63	8.3	63	8.8	55	6.3	70	5.9	66	
			No Information Provided	66	3786	29	44	37	56	17	26	1	2	4.5	57	8.1	62	7.7	59	7.9	49	5.9	66	6.6	73	
Special Education			Yes	207	3363	167	81	40	19	16	8	3	1	3.5	44	6.0	46	5.5	42	5.3	33	4.4	49	4.1	46	
			No	1628	3901	602	37	1026	63	718	44	80	5	5.3	66	8.3	64	8.4	64	9.0	56	6.4	71	6.0	67	
			No Information Provided	64	3797	28	44	36	56	17	27	1	2	4.6	57	8.1	62	7.8	60	7.9	49	6.0	67	6.7	74	
Gifted/Talented			Participants	109	4485	5	5	104	95	95	87	28	26	6.6	82	10.7	82	11.0	84	12.2	76	8.0	89	7.6	85	
			Nonparticipants	1721	3799	762	44	959	56	638	37	54	3	5.0	62	7.9	60	7.9	61	8.3	52	6.0	67	5.7	63	
			No Information Provided	69	3817	30	43	39	57	18	26	2	3	4.7	58	8.1	62	7.8	60	7.9	50	6.1	68	6.6	73	
At-Risk			Yes	1057	3586	658	62	399	38	198	19	10	1	4.4	55	6.9	53	6.8	52	7.0	44	5.3	59	5.1	56	
			No	775	4184	110	14	665	86	535	69	72	9	6.0	75	9.6	74	9.8	75	10.7	67	7.3	81	6.8	76	
			No Information Provided	67	3838	29	43	38	57	18	27	2	3	4.7	59	8.2	63	7.9	61	8.1	51	6.2	68	6.7	75	
Career/Technical Education			Participants	1183	3862	483	41	700	59	484	41	48	4	5.1	64	8.1	62	8.1	62	8.7	55	6.2	69	5.8	65	
			Nonparticipants	651	3803	283	43	368	57	251	39	35	5	5.1	63	7.9	61	8.0	61	8.3	52	6.0	67	5.8	64	
			No Information Provided	65	3776	31	48	34	52	16	25	1	2	4.5	57	8.0	62	7.4	57	7.9	49	5.9	66	6.6	73	



STATE OF TEXAS ASSESSMENTS OF ACADEMIC READINESS  
*Constructed Responses Summary Report*  
**ENGLISH II**  
First-Time Tested Students

STATEWIDE

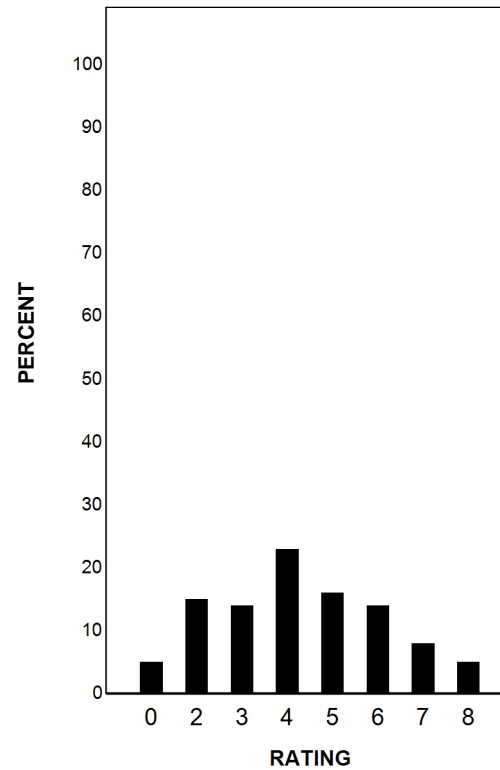
Report Date: SUMMER 2017  
Date of Testing: SUMMER 2017

--- = No Data Reported For Fewer Than Five Students

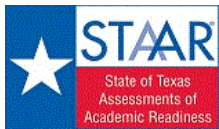
**Written Composition Rating Summary**

**Persuasive Composition**

Rating	#	%
0	87	5
2	285	15
3	264	14
4	441	23
5	305	16
6	260	14
7	153	8
8	104	5
Total	1899	100



Each composition has been scored independently by two readers. The written composition rating of 0-8 represents the summation of these scores.



# STATE OF TEXAS ASSESSMENTS OF ACADEMIC READINESS

## Summary Report

### ENGLISH II

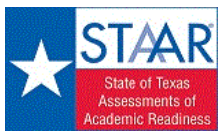
#### Retested Students

STATEWIDE

Report Date: SUMMER 2017  
Date of Testing: SUMMER 2017

Administration Summary			Number of Students Tested	Average Scale Score	Results for Each Reporting Category*																		
					Number	Percent	1		2		3		4		5		6						
Students Tested	63641	99			Did Not Meet	Approaches	Meets	Masters	Understanding/ Analysis Across Genres	Understanding/ Analysis of Literary Texts	Understanding/ Analysis of Informational Texts	Composition	Revision	Editing	Number of Points Possible								
Students Not Tested															8		13		13		16		9
Absent	0	0			#	%	#	%	#	%	#	%	#	%	#	%	#	%					
Other	475	1																	Number of Points Scored		Number of Points Scored		Number of Points Scored
Total Documents Submitted	64116	100			8		13		13		16		9		9								
Legend					#		#		#		#		#		#		#						
--- = No Data Reported For Fewer Than Five Students					#		#		#		#		#		#		#						
<b>All Students</b>	63641	3510			49003	77	14638	23	3305	5	4	0	4.1	51	6.3	49	6.2	48	6.8	43	5.0	55	4.6
<b>Male</b>	38006	3479	30041	79	7965	21	1844	5	2	0	3.9	49	6.2	47	6.1	47	6.6	41	4.9	54	4.5	50	
<b>Female</b>	25635	3555	18962	74	6673	26	1461	6	2	0	4.3	54	6.5	50	6.4	49	7.2	45	5.0	56	4.9	54	
<b>No Information Provided</b>	0	---	---	---	---	---	---	---	---	---	---	---	---	---	---	---	---	---	---	---	---	---	---
<b>Hispanic/Latino</b>	40474	3505	31499	78	8975	22	1945	5	1	0	4.1	51	6.3	48	6.3	48	6.8	43	4.9	54	4.6	51	
<b>American Indian or Alaska Native</b>	200	3534	146	73	54	27	16	8	0	0	4.2	53	6.3	49	6.6	51	6.7	42	5.1	56	4.7	53	
<b>Asian</b>	1318	3512	988	75	330	25	79	6	1	0	4.0	50	6.2	48	6.3	48	6.9	43	4.7	52	5.0	55	
<b>Black or African American</b>	10995	3488	8729	79	2266	21	443	4	0	0	4.1	51	6.1	47	6.0	46	6.7	42	4.9	55	4.6	51	
<b>Native Hawaiian or Other Pacific Islander</b>	90	3502	72	80	18	20	4	4	0	0	3.8	47	6.2	48	6.2	48	7.3	45	4.6	51	4.7	52	
<b>White</b>	9838	3548	7055	72	2783	28	769	8	2	0	4.2	52	6.6	51	6.3	49	7.0	44	5.3	59	4.8	53	
<b>Two or More Races</b>	710	3562	503	71	207	29	48	7	0	0	4.2	53	6.7	51	6.4	49	7.1	44	5.4	60	4.8	54	
<b>No Information Provided</b>	16	3409	11	69	5	31	1	6	0	0	3.3	41	5.9	45	7.0	54	5.5	34	4.3	48	3.8	42	
<b>Economically Disadvantaged</b>	Yes	45550	3490	36029	79	9521	21	1971	4	1	0	4.0	50	6.2	48	6.1	47	6.7	42	4.8	54	4.6	51
	No	18076	3558	12961	72	5115	28	1334	7	3	0	4.2	53	6.6	51	6.5	50	7.1	44	5.2	58	4.8	53
	No Information Provided	15	3309	13	87	2	13	0	0	0	2.7	34	5.4	42	6.5	50	4.7	29	3.9	44	3.7	41	
<b>Title I, Part A</b>	Participants	36573	3494	28763	79	7810	21	1656	5	1	0	4.1	51	6.2	48	6.2	47	6.7	42	4.9	54	4.6	51
	Nonparticipants	27053	3530	20227	75	6826	25	1649	6	3	0	4.1	52	6.5	50	6.3	49	6.9	43	5.1	56	4.7	52
	No Information Provided	15	3335	13	87	2	13	0	0	0	3.1	38	5.7	44	6.7	52	4.7	29	3.6	40	3.9	44	
<b>Migrant</b>	Yes	588	3456	476	81	112	19	17	3	0	0	4.0	50	5.9	45	6.0	46	6.6	41	4.6	51	4.5	50
	No	62980	3510	48469	77	14511	23	3284	5	4	0	4.1	51	6.3	49	6.2	48	6.8	43	5.0	55	4.6	51
	No Information Provided	73	3419	58	79	15	21	4	5	0	3.8	47	6.1	47	6.0	46	5.4	34	4.6	52	4.2	46	
<b>Limited English Proficient</b>	Current LEP	16273	3402	14187	87	2086	13	325	2	0	0	3.7	46	5.8	45	5.7	44	6.1	38	4.2	47	4.2	46
	Non-LEP (Monitored 1st Year)	746	3636	478	64	268	36	57	8	0	0	4.5	57	6.7	52	7.1	55	8.0	50	5.4	60	5.0	56
	Non-LEP (Monitored 2nd Year)	1307	3641	865	66	442	34	86	7	0	0	4.7	58	7.0	54	7.1	55	7.7	48	5.5	61	5.1	56
	Other Non-LEP	45298	3542	33459	74	11839	26	2836	6	4	0	4.2	53	6.5	50	6.4	49	7.0	44	5.2	58	4.8	53
	No Information Provided	17	3409	14	82	3	18	1	6	0	3.1	38	5.7	44	6.5	50	6.0	38	4.4	48	4.2	47	
<b>Bilingual</b>	Participants	41	3722	21	51	20	49	9	22	0	0	4.9	61	7.3	56	7.3	56	8.6	54	5.8	64	5.3	59
	Nonparticipants	63573	3509	48958	77	14615	23	3295	5	4	0	4.1	51	6.3	49	6.2	48	6.8	43	5.0	55	4.6	51
	No Information Provided	27	3340	24	89	3	11	1	4	0	3.1	39	5.8	44	6.1	47	5.0	31	4.0	44	3.8	42	
<b>ESL</b>	Participants	15656	3400	13659	87	1997	13	311	2	0	0	3.7	46	5.8	45	5.7	44	6.1	38	4.2	46	4.2	46
	Nonparticipants	47961	3545	35323	74	12638	26	2993	6	4	0	4.2	53	6.5	50	6.4	49	7.1	44	5.2	58	4.8	53
	No Information Provided	24	3360	21	88	3	13	1	4	0	3.0	38	5.8	44	6.3	48	5.5	34	4.1	46	3.8	43	
<b>Special Education</b>	Yes	9574	3359	8511	89	1063	11	175	2	0	0	3.5	44	5.8	44	5.4	41	5.5	35	4.3	48	3.9	44
	No	54046	3536	40474	75	13572	25	3129	6	4	0	4.2	52	6.4	49	6.4	49	7.1	44	5.1	56	4.7	53
	No Information Provided	21	3325	18	86	3	14	1	5	0	3.0	38	5.8	45	6.2	48	4.6	29	3.7	41	3.9	43	
<b>Gifted/Talented</b>	Participants	416	3717	208	50	208	50	72	17	3	1	4.8	60	7.4	57	7.4	57	7.9	50	5.9	65	5.5	61
	Nonparticipants	63203	3508	48776	77	14427	23	3232	5	1	0	4.1	51	6.3	48	6.2	48	6.8	43	4.9	55	4.6	51
	No Information Provided	22	3342	19	86	3	14	1	5	0	3.0	38	5.9	45	6.4	49	4.5	28	3.6	40	4.4	48	
<b>At-Risk</b>	Yes	55056	3482	44204	80	10852	20	2119	4	1	0	4.0	50	6.2	47	6.1	47	6.7	42	4.8	54	4.5	50
	No	8571	3685	4787	56	3784	44	1186	14	3	0	4.8	60	7.2	55	7.3	56	7.9	49	5.8	65	5.2	58
	No Information Provided	14	3301	12	86	2	14	0	0	0	2.7	34	5.4	42	6.6	51	4.3	27	3.8	42	3.8	42	
<b>Career/Technical Education</b>	Participants	49208	3519	37662	77	11546	23	2592	5	3	0	4.1	52	6.4	49	6.3	48	6.9	43	5.0	56	4.6	52
	Nonparticipants	14404	3477	11316	79	3088	21	713	5	1	0	4.0	49	6.2	48	6.0	46	6.7	42	4.8	53	4.5	50
	No Information Provided	29	3337	25	86	4	14	0	0	0	3.2	41	5.5	42	5.9	45	4.8	30	3.9	44	4.2	47	

\* Students who took the paper STAAR with embedded supports version of the test are not included in the reporting category results.



STATE OF TEXAS ASSESSMENTS OF ACADEMIC READINESS  
*Constructed Responses Summary Report*  
**ENGLISH II**  
Retested Students

STATEWIDE

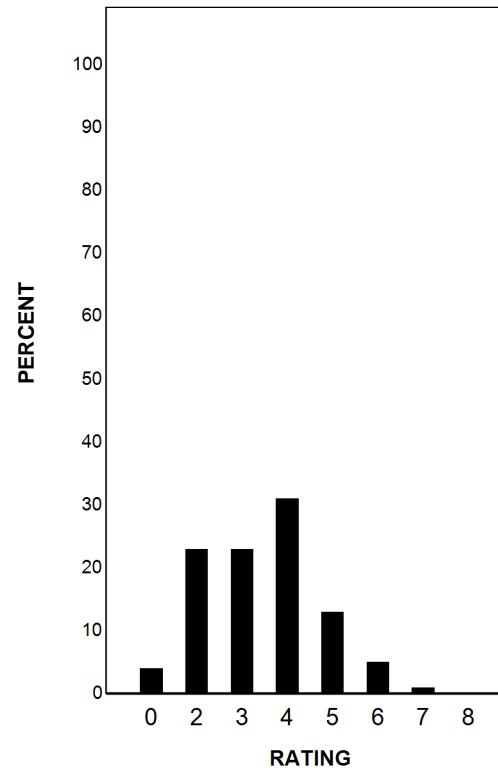
Report Date: SUMMER 2017  
Date of Testing: SUMMER 2017

--- = No Data Reported For Fewer Than Five Students

**Written Composition Rating Summary\***

**Persuasive Composition**

Rating	#	%
0	2310	4
2	14667	23
3	14815	23
4	19868	31
5	8432	13
6	2915	5
7	511	1
8	115	0
Total	63633	100



Each composition has been scored independently by two readers. The written composition rating of 0-8 represents the summation of these scores.

\* Students who took the paper STAAR with embedded supports version of the test are not included in this report.