

STATE OF TEXAS ASSESSMENTS OF ACADEMIC READINESS

Summary Report

ENGLISH I

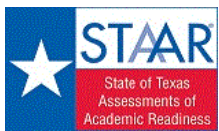
All Students

STATEWIDE

Report Date: SUMMER 2017
Date of Testing: SUMMER 2017

Administration Summary			Number of Students Tested	Average Scale Score	Results for Each Reporting Category*																					
					Number	Percent	Did Not Meet		Approaches		Meets		Masters		1		2		3		4		5		6	
		#					%	#	%	#	%	#	%	Understanding/Analysis Across Genres		Understanding/Analysis of Literary Texts		Understanding/Analysis of Informational Texts		Composition		Revision		Editing		
		Number of Points Possible																								
		8			13		13		16		9		9													
Number of Points Scored																										
		#			%	#	%	#	%	#	%	#	%	#	%	#	%	#	%	#	%	#	%			
All Students					85727	3504	69129	81	16598	19	4057	5	79	0	4.1	52	5.6	43	5.7	44	6.2	39	4.7	52	4.6	51
Male					52810	3475	43513	82	9297	18	2241	4	19	0	4.0	50	5.4	41	5.6	43	6.0	37	4.6	52	4.4	49
Female					32913	3549	25613	78	7300	22	1815	6	60	0	4.3	54	5.9	45	5.9	45	6.7	42	4.7	52	4.9	54
No Information Provided			4	---	---	---	---	---	---	---	---	---	---	---	---	---	---	---	---	---	---	---	---	---		
Hispanic/Latino			54271	3493	44593	82	9678	18	2150	4	19	0	4.0	51	5.5	42	5.7	44	6.2	39	4.6	51	4.5	51		
American Indian or Alaska Native			264	3490	212	80	52	20	16	6	0	0	4.2	52	5.6	43	5.7	44	5.8	36	4.6	51	4.5	50		
Asian			1309	3534	1010	77	299	23	99	8	5	0	4.0	50	5.7	44	5.9	46	6.5	40	4.8	53	4.9	54		
Black or African American			14887	3471	12447	84	2440	16	516	3	0	0	4.1	51	5.4	42	5.5	42	6.0	38	4.5	50	4.5	50		
Native Hawaiian or Other Pacific Islander			89	3545	72	81	17	19	9	10	0	0	4.3	54	5.9	45	5.8	45	6.3	39	4.8	53	5.0	55		
White			13844	3573	10011	72	3833	28	1172	8	46	0	4.5	56	6.1	47	6.2	47	6.5	40	5.0	55	4.8	54		
Two or More Races			1009	3567	746	74	263	26	84	8	5	0	4.5	56	6.0	46	6.1	47	6.5	40	5.0	55	4.8	53		
No Information Provided			54	3585	38	70	16	30	11	20	2	4.7	59	5.9	45	6.5	50	5.9	37	5.1	57	4.6	51			
Economically Disadvantaged			63251	3483	52517	83	10734	17	2334	4	22	0	4.0	50	5.4	42	5.6	43	6.1	38	4.6	51	4.5	50		
Yes			22372	3562	16560	74	5812	26	1689	8	54	0	4.4	55	5.9	46	6.1	47	6.5	41	4.9	55	4.8	54		
No Information Provided			104	3736	52	50	52	50	34	33	3	4.6	58	6.6	51	7.3	56	6.9	43	6.2	69	5.8	64			
Title I, Part A			49886	3485	41083	82	8803	18	2019	4	22	0	4.0	50	5.4	42	5.6	43	6.1	38	4.6	51	4.6	51		
Participants			35735	3529	27993	78	7742	22	2006	6	54	0	4.3	53	5.7	44	5.9	45	6.3	40	4.8	53	4.7	52		
Nonparticipants			106	3714	53	50	53	50	32	30	3	4.5	57	6.5	50	7.1	55	6.8	43	6.2	68	5.7	63			
No Information Provided			764	3436	668	87	96	13	18	2	1	0	3.8	47	5.2	40	5.3	40	5.9	37	4.3	48	4.4	49		
Migrant			84759	3504	68332	81	16427	19	3996	5	74	0	4.1	52	5.6	43	5.7	44	6.2	39	4.7	52	4.6	51		
Yes			204	3593	129	63	75	37	43	21	4	2	4.2	53	6.0	46	6.5	50	6.1	38	5.3	59	5.0	55		
No Information Provided			21801	3415	19573	90	2228	10	327	1	4	0	3.6	45	4.9	38	5.2	40	5.7	36	4.3	47	4.2	47		
Limited English Proficient			1958	3602	1449	74	509	26	105	5	0	0	4.4	55	6.1	47	6.4	49	7.0	44	5.2	58	5.0	56		
Current LEP			927	3631	629	68	298	32	76	8	0	0	4.6	58	6.2	48	6.5	50	7.1	44	5.3	59	5.3	59		
Non-LEP (Monitored 1st Year)			60934	3530	47424	78	13510	22	3514	6	72	0	4.3	54	5.8	44	5.9	45	6.4	40	4.8	53	4.7	52		
Non-LEP (Monitored 2nd Year)			107	3741	54	50	53	50	35	33	3	3	4.7	58	6.6	51	7.2	56	7.0	44	6.3	70	5.8	65		
Other Non-LEP			55	3548	43	78	12	22	4	7	0	0	4.1	51	5.8	45	6.1	47	6.6	41	5.1	57	4.7	52		
No Information Provided			85543	3503	69015	81	16528	19	4017	5	75	0	4.1	52	5.6	43	5.7	44	6.2	39	4.7	52	4.6	51		
Bilingual			129	3689	71	55	58	45	36	28	4	3	4.5	57	6.3	49	6.8	52	6.9	43	5.9	65	5.6	62		
Participants			20725	3414	18621	90	2104	10	313	2	3	0	3.6	45	4.9	38	5.2	40	5.7	36	4.2	47	4.2	47		
Nonparticipants			64884	3532	50446	78	14438	22	3710	6	73	0	4.3	54	5.8	44	5.9	45	6.4	40	4.8	53	4.7	52		
No Information Provided			118	3707	62	53	56	47	34	29	3	3	4.6	57	6.4	49	7.0	54	6.9	43	6.1	67	5.7	63		
ESL			16162	3366	14914	92	1248	8	206	1	3	0	3.6	45	4.8	37	5.0	38	5.2	32	4.0	44	3.9	43		
Yes			69449	3535	54157	78	15292	22	3815	5	72	0	4.3	53	5.7	44	5.9	46	6.5	40	4.8	54	4.8	53		
No Information Provided			116	3715	58	50	58	50	36	31	4	3	4.5	57	6.6	51	7.0	54	6.9	43	6.1	68	5.7	63		
Special Education			535	3770	294	55	241	45	124	23	25	5	5.1	64	7.0	54	7.4	57	7.5	47	5.7	63	5.7	63		
Participants			85066	3502	68770	81	16296	19	3896	5	50	0	4.1	52	5.6	43	5.7	44	6.2	39	4.7	52	4.6	51		
Nonparticipants			126	3708	65	52	61	48	37	29	4	3	4.6	58	6.5	50	7.0	54	6.8	42	6.1	67	5.7	63		
No Information Provided			74459	3481	62029	83	12430	17	2540	3	17	0	4.0	50	5.4	42	5.6	43	6.1	38	4.6	51	4.5	50		
At-Risk			11162	3652	7048	63	4114	37	1482	13	59	1	4.8	60	6.5	50	6.6	51	7.0	44	5.3	59	5.3	58		
Yes			106	3744	52	49	54	51	35	33	3	3	4.7	59	6.7	52	7.3	56	7.0	44	6.2	69	5.8	65		
No Information Provided			60624	3509	48895	81	11729	19	2804	5	37	0	4.2	52	5.6	43	5.8	44	6.3	39	4.7	52	4.6	51		
Career/Technical Education			24960	3488	20145	81	4815	19	1219	5	39	0	4.1	51	5.5	42	5.7	44	6.1	38	4.6	51	4.6	51		
Participants			143	3596	89	62	54	38	34	24	3	2	4.2	52	6.0	46	6.5	50	6.0	38	5.4	60	5.1	57		
Nonparticipants																										
No Information Provided																										

* Students who took the paper STAAR with embedded supports version of the test are not included in the reporting category results.



STATE OF TEXAS ASSESSMENTS OF ACADEMIC READINESS
Constructed Responses Summary Report
ENGLISH I
All Students

STATEWIDE

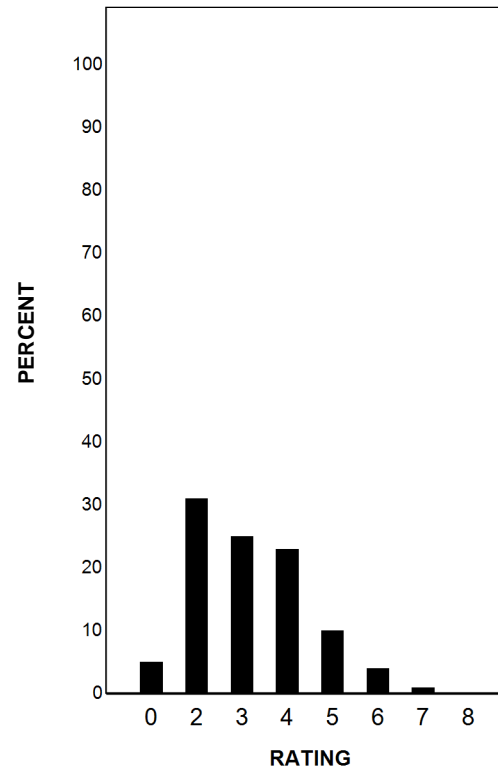
Report Date: SUMMER 2017
Date of Testing: SUMMER 2017

--- = No Data Reported For Fewer Than Five Students

Written Composition Rating Summary*

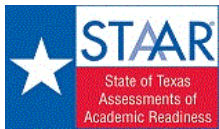
Expository Composition

Rating	#	%
0	4699	5
2	26717	31
3	21301	25
4	20057	23
5	8877	10
6	3392	4
7	552	1
8	113	0
Total	85708	100



Each composition has been scored independently by two readers. The written composition rating of 0-8 represents the summation of these scores.

* Students who took the paper STAAR with embedded supports version of the test are not included in this report.



STATE OF TEXAS ASSESSMENTS OF ACADEMIC READINESS

Summary Report

ENGLISH I

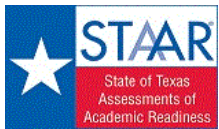
First-Time Tested Students

STATEWIDE

Report Date: SUMMER 2017
Date of Testing: SUMMER 2017

Administration Summary			Number of Students Tested	Average Scale Score	Did Not Meet		Approaches		Meets		Masters		Results for Each Reporting Category*												
													1	2	3	4	5	6							
Number	Percent											Understanding/ Analysis Across Genres		Understanding/ Analysis of Literary Texts		Understanding/ Analysis of Informational Texts		Composition		Revision		Editing			
Students Tested			1395	98																					
Students Not Tested																									
Absent			0	0																					
Other			28	2																					
Total Documents Submitted			1423	100																					
Legend			--- = No Data Reported For Fewer Than Five Students																						
			Number of Points Possible		Number of Points Scored																				
			8		13				13				16				9		9						
			#	%	#	%	#	%	#	%	#	%	#	%	#	%	#	%	#	%	#	%	#	%	
All Students			1395	3712	731	52	664	48	449	32	63	5	4.8	60	7.0	54	7.3	56	7.0	44	5.7	63	5.5	61	
Male			712	3565	441	62	271	38	168	24	15	2	4.4	55	6.3	48	6.6	51	6.0	37	5.4	60	4.9	55	
Female			679	3868	287	42	392	58	280	41	48	7	5.3	66	7.8	60	8.0	62	8.1	51	6.0	67	6.1	68	
No Information Provided			4	---	---	---	---	---	---	---	---	---	---	---	---	---	---	---	---	---	---	---	---	---	
Hispanic/Latino			683	3610	409	60	274	40	166	24	13	2	4.5	56	6.5	50	6.8	52	6.6	41	5.3	59	5.1	56	
American Indian or Alaska Native			3	---	---	---	---	---	---	---	---	---	---	---	---	---	---	---	---	---	---	---	---	---	
Asian			59	4016	14	24	45	76	33	56	5	8	4.7	59	8.1	63	8.8	68	9.0	56	7.5	83	7.2	80	
Black or African American			219	3433	154	70	65	30	29	13	2	1	4.1	51	5.6	43	6.0	46	5.9	37	4.8	53	4.6	51	
Native Hawaiian or Other Pacific Islander			4	---	---	---	---	---	---	---	---	---	---	---	---	---	---	---	---	---	---	---	---	---	
White			373	3985	129	35	244	65	195	52	37	10	5.7	71	8.6	66	8.6	67	8.1	51	6.5	72	6.4	71	
Two or More Races			27	3970	10	37	17	63	10	37	5	19	5.5	69	7.9	61	8.4	64	7.9	49	6.7	75	6.2	69	
No Information Provided			27	3790	14	52	13	48	11	41	1	4	5.4	67	7.1	55	7.6	58	7.1	44	6.3	70	5.4	60	
Economically Disadvantaged			Yes	835	3572	533	64	302	36	178	21	14	2	4.4	55	6.2	48	6.5	50	6.2	39	5.1	57	5.0	55
			No	484	3930	171	35	313	65	238	49	46	10	5.5	69	8.3	64	8.6	66	8.3	52	6.4	71	6.2	69
			No Information Provided	76	3867	27	36	49	64	33	43	4	4.7	59	7.3	56	8.1	62	7.8	49	7.0	78	6.6	73	
Title I, Part A			Participants	727	3588	448	62	279	38	172	24	15	2	4.4	55	6.4	49	6.6	50	6.4	40	5.2	58	5.1	56
			Nonparticipants	592	3847	255	43	337	57	246	42	45	8	5.3	66	7.8	60	8.1	62	7.6	48	6.0	67	5.9	65
			No Information Provided	76	3847	28	37	48	63	31	41	3	4	4.7	58	7.3	56	8.0	61	7.7	48	6.9	77	6.4	71
Migrant			Yes	10	3430	8	80	2	20	0	0	0	3.2	40	5.1	39	5.1	39	5.8	36	4.9	54	4.5	50	
			No	1283	3708	679	53	604	47	411	32	59	5	4.8	60	7.0	54	7.3	56	7.0	44	5.6	62	5.4	60
			No Information Provided	102	3795	44	43	58	57	38	37	4	4	4.7	59	7.1	54	7.6	59	7.3	45	6.5	73	6.1	68
Limited English Proficient			Current LEP	196	3403	165	84	31	16	14	7	1	1	3.5	44	4.9	37	5.5	42	5.1	32	4.5	50	4.0	45
			Non-LEP (Monitored 1st Year)	17	3502	14	82	3	18	1	6	0	0	3.8	47	5.5	42	5.4	41	5.6	35	5.5	61	5.1	57
			Non-LEP (Monitored 2nd Year)	9	4091	1	11	8	89	5	56	0	0	6.3	79	8.8	68	9.7	74	9.3	58	7.1	79	7.3	81
			Other Non-LEP	1092	3758	521	48	571	52	395	36	59	5	5.0	63	7.4	57	7.6	58	7.3	46	5.8	64	5.7	63
			No Information Provided	81	3850	30	37	51	63	34	42	3	4	4.7	59	7.2	55	7.9	61	7.7	48	7.0	77	6.5	72
Bilingual			Participants	0	---	---	---	---	---	---	---	---	---	---	---	---	---	---	---	---	---	---	---	---	
			Nonparticipants	1313	3703	700	53	613	47	415	32	59	4	4.8	60	7.0	54	7.3	56	7.0	44	5.6	62	5.4	60
			No Information Provided	82	3853	31	38	51	62	34	41	4	5	4.7	59	7.2	56	7.9	61	7.7	48	6.9	77	6.5	72
ESL			Participants	195	3395	163	84	32	16	13	7	1	1	3.5	44	4.9	37	5.4	41	5.1	32	4.4	49	4.0	44
			Nonparticipants	1119	3759	537	48	582	52	403	36	59	5	5.0	63	7.4	57	7.6	58	7.3	46	5.8	64	5.7	63
			No Information Provided	81	3834	31	38	50	62	33	41	3	4	4.6	58	7.1	54	7.9	60	7.6	48	6.9	76	6.4	71
Special Education			Yes	172	3296	150	87	22	13	11	6	2	1	3.6	45	4.8	37	5.1	39	4.7	29	4.0	45	3.9	44
			No	1145	3764	553	48	592	52	405	35	57	5	5.0	62	7.3	56	7.6	58	7.3	46	5.8	65	5.6	63
			No Information Provided	78	3864	28	36	50	64	33	42	4	5	4.7	59	7.3	56	8.0	62	7.8	49	7.0	77	6.5	73
Gifted/Talented			Participants	60	4528	2	3	58	97	54	90	23	38	6.9	86	10.8	83	11.1	86	11.3	71	7.9	88	8.0	89
			Nonparticipants	1248	3665	694	56	554	44	361	29	36	3	4.7	59	6.8	53	7.1	54	6.8	42	5.5	61	5.3	59
			No Information Provided	87	3830	35	40	52	60	34	39	4	5	4.7	59	7.1	55	7.8	60	7.5	47	6.8	75	6.4	71
At-Risk			Yes	851	3513	579	68	272	32	151	18	10	1	4.2	53	6.0	46	6.2	48	6.0	38	4.9	55	4.7	53
			No	464	4055	122	26	342	74	265	57	50	11	5.9	73	8.9	68	9.2	71	8.8	55	6.8	76	6.7	74
			No Information Provided	80	3847	30	38	50	63	33	41	3	4	4.8	59	7.3	56	8.0	61	7.6	48	6.9	76	6.5	72
Career/Technical Education			Participants	672	3764	338	50	334	50	235	35	28	4	5.0	63	7.2	56	7.5	58	7.4	46	5.7	63	5.6	62
			Nonparticipants	637	3648	356	56	281	44	182	29	32	5	4.6	58	6.8	52	7.0	54	6.6	41	5.5	61	5.3	58
			No Information Provided	86	3783	37	43	49	57	32	37	3	3	4.5	56	6.9	53	7.7	59	7.2	45	6.5	72	6.1	68

* Students who took the paper STAAR with embedded supports version of the test are not included in the reporting category results.



STATE OF TEXAS ASSESSMENTS OF ACADEMIC READINESS
Constructed Responses Summary Report
ENGLISH I
First-Time Tested Students

STATEWIDE

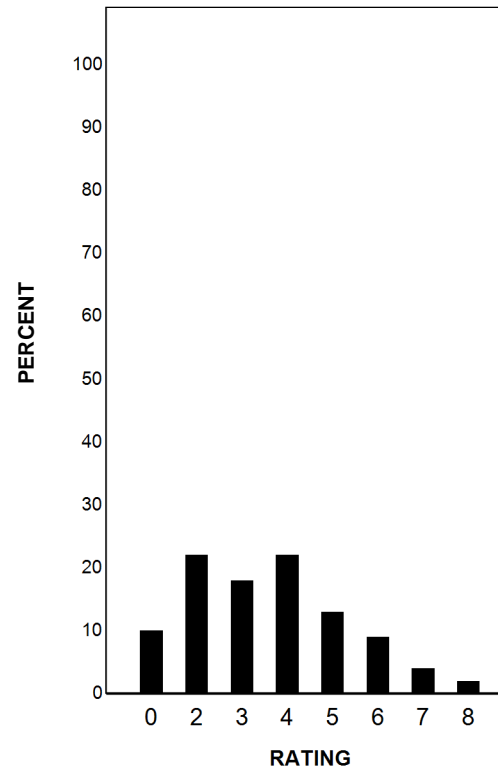
Report Date: SUMMER 2017
Date of Testing: SUMMER 2017

--- = No Data Reported For Fewer Than Five Students

Written Composition Rating Summary*

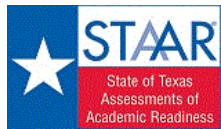
Expository Composition

Rating	#	%
0	142	10
2	305	22
3	244	18
4	300	22
5	185	13
6	130	9
7	57	4
8	30	2
Total	1393	100



Each composition has been scored independently by two readers. The written composition rating of 0-8 represents the summation of these scores.

* Students who took the paper STAAR with embedded supports version of the test are not included in this report.



STATE OF TEXAS ASSESSMENTS OF ACADEMIC READINESS

Summary Report

ENGLISH I

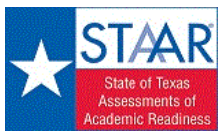
Retested Students

STATEWIDE

Report Date: SUMMER 2017
Date of Testing: SUMMER 2017

Administration Summary			Number of Students Tested	Average Scale Score	Did Not Meet				Approaches				Meets				Masters				Results for Each Reporting Category*											
																					Number Percent		1		2		3		4		5	
				Understanding/Analysis Across Genres		Understanding/Analysis of Literary Texts		Understanding/Analysis of Informational Texts		Composition		Revision		Editing																		
				8		13		13		16		9		9		Number of Points Possible																
																Number of Points Scored																
				# %		# %		# %		# %		# %		# %		# %		# %		# %		# %		# %		# %						
All Students			84332	3500	68398	81	15934	19	3608	4	16	0	4.1	52	5.5	43	5.7	44	6.2	39	4.6	52	4.6	51								
Male			52098	3474	43072	83	9026	17	2073	4	4	0	4.0	50	5.4	41	5.6	43	6.0	37	4.6	51	4.4	49								
Female			32234	3543	25326	79	6908	21	1535	5	12	0	4.3	54	5.8	45	5.9	45	6.6	41	4.7	52	4.9	54								
No Information Provided			0	---	---	---	---	---	---	---	---	---	---	---	---	---	---	---	---	---	---	---	---	---								
Hispanic/Latino			53588	3491	44184	82	9404	18	1984	4	6	0	4.0	50	5.5	42	5.7	44	6.2	39	4.6	51	4.5	50								
American Indian or Alaska Native			261	3482	212	81	49	19	14	5	0	0	4.1	52	5.6	43	5.7	44	5.8	36	4.6	51	4.5	50								
Asian			1250	3512	996	80	254	20	66	5	0	0	4.0	49	5.6	43	5.8	45	6.3	40	4.6	52	4.8	53								
Black or African American			14668	3472	12293	84	2375	16	487	3	1	0	4.1	51	5.4	42	5.5	42	6.0	38	4.5	50	4.5	50								
Native Hawaiian or Other Pacific Islander			85	3526	71	84	14	16	6	7	0	0	4.2	53	5.8	44	5.6	43	6.3	39	4.7	52	4.9	55								
White			13471	3562	9882	73	3589	27	977	7	9	0	4.5	56	6.0	46	6.1	47	6.4	40	4.9	55	4.8	53								
Two or More Races			982	3556	736	75	246	25	74	8	0	0	4.5	56	5.9	46	6.0	46	6.4	40	4.9	55	4.8	53								
No Information Provided			27	3381	24	89	3	11	0	0	0	0	4.1	51	4.6	36	5.5	42	4.7	29	4.0	45	3.8	42								
Economically Disadvantaged			62416	3481	51984	83	10432	17	2156	3	8	0	4.0	50	5.4	42	5.6	43	6.1	38	4.6	51	4.5	50								
Yes			21888	3554	16389	75	5499	25	1451	7	8	0	4.4	55	5.9	45	6.1	47	6.5	41	4.9	54	4.8	53								
No			28	3381	25	89	3	11	1	4	0	0	4.3	53	4.7	36	5.2	40	4.7	29	4.1	45	3.6	40								
No Information Provided			0	---	---	---	---	---	---	---	---	---	---	---	---	---	---	---	---	---	---	---	---	---								
Title I, Part A			49159	3483	40635	83	8524	17	1847	4	7	0	4.0	50	5.4	42	5.6	43	6.1	38	4.6	51	4.5	51								
Participants			35143	3523	27738	79	7405	21	1760	5	9	0	4.2	53	5.7	44	5.9	45	6.3	40	4.8	53	4.6	52								
Nonparticipants			30	3379	25	83	5	17	1	3	0	0	4.2	52	4.7	36	4.9	38	4.7	29	4.2	47	3.7	41								
No Information Provided			0	---	---	---	---	---	---	---	---	---	---	---	---	---	---	---	---	---	---	---	---	---								
Migrant			754	3436	660	88	94	12	18	2	1	0	3.8	47	5.2	40	5.3	40	5.9	37	4.3	48	4.4	49								
Yes			83476	3501	67653	81	15823	19	3585	4	15	0	4.1	52	5.5	43	5.7	44	6.2	39	4.6	52	4.6	51								
No			102	3391	85	83	17	17	5	5	0	0	3.8	47	5.0	39	5.3	41	4.9	31	4.2	46	3.9	43								
No Information Provided			0	---	---	---	---	---	---	---	---	---	---	---	---	---	---	---	---	---	---	---	---	---								
Limited English Proficient			21605	3415	19408	90	2197	10	313	1	3	0	3.6	45	4.9	38	5.2	40	5.7	36	4.2	47	4.2	47								
Current LEP			1941	3602	1435	74	506	26	104	5	0	0	4.4	55	6.1	47	6.4	49	7.0	44	5.2	58	5.0	56								
Non-LEP (Monitored 1st Year)			918	3626	628	68	290	32	71	8	0	0	4.6	57	6.2	48	6.5	50	7.0	44	5.3	59	5.3	59								
Non-LEP (Monitored 2nd Year)			59842	3526	46903	78	12939	22	3119	5	13	0	4.3	53	5.7	44	5.9	45	6.4	40	4.8	53	4.7	52								
Other Non-LEP			26	3403	24	92	2	8	1	4	0	0	4.5	56	4.8	37	5.0	39	5.2	32	4.1	46	3.7	41								
No Information Provided			55	3548	43	78	12	22	4	7	0	0	4.1	51	5.8	45	6.1	47	6.6	41	5.1	57	4.7	52								
Bilingual			84230	3500	68315	81	15915	19	3602	4	16	0	4.1	52	5.5	43	5.7	44	6.2	39	4.6	52	4.6	51								
Participants			47	3402	40	85	7	15	2	4	0	0	4.2	53	4.8	37	4.9	38	5.4	34	4.1	46	4.0	44								
Nonparticipants			20530	3414	18458	90	2072	10	300	1	2	0	3.6	45	4.9	38	5.2	40	5.7	36	4.2	47	4.2	47								
No Information Provided			63765	3528	49909	78	13856	22	3307	5	14	0	4.3	53	5.8	44	5.9	45	6.4	40	4.8	53	4.7	52								
ESL			37	3428	31	84	6	16	1	3	0	0	4.4	55	5.0	39	5.2	40	5.2	33	4.2	47	4.1	46								
Yes			15990	3367	14764	92	1226	8	195	1	1	0	3.6	45	4.8	37	5.0	38	5.2	33	4.0	44	3.9	43								
No			68304	3531	53604	78	14700	22	3410	5	15	0	4.2	53	5.7	44	5.9	45	6.5	40	4.8	53	4.8	53								
No Information Provided			38	3411	30	79	8	21	3	8	0	0	4.2	52	5.1	39	5.0	38	4.9	31	4.4	49	3.9	44								
Gifted/Talented			475	3674	292	61	183	39	70	15	2	0	4.9	61	6.6	50	6.9	53	7.0	44	5.4	60	5.4	59								
Participants			83818	3499	68076	81	15742	19	3535	4	14	0	4.1	51	5.5	43	5.7	44	6.2	39	4.6	52	4.6	51								
Nonparticipants			39	3437	30	77	9	23	3	8	0	0	4.4	55	5.3	40	5.2	40	5.1	32	4.5	50	4.0	44								
No Information Provided			73608	3481	61450	83	12158	17	2389	3	7	0	4.0	50	5.4	42	5.6	43	6.1	38	4.6	51	4.5	50								
Yes			10698	3635	6926	65	3772	35	1217	11	9	0	4.7	59	6.4	49	6.5	50	6.9	43	5.3	59	5.2	58								
No			26	3428	22	85	4	15	2	8	0	0	4.5	56	5.0	38	5.3	41	5.2	32	4.2	47	3.9	43								
No Information Provided			59952	3507	48557	81	11395	19	2569	4	9	0	4.1	52	5.6	43	5.8	44	6.3	39	4.7	52	4.6	51								
Career/Technical Education			24323	3484	19789	81	4534	19	1037	4	7	0	4.1	51	5.5	42	5.6	43	6.1	38	4.6	51	4.5	50								
Participants			57	3312	52	91	5	9	2	4	0	0	3.6	45	4.6	35	4.8	37	4.2	26	3.7	41	3.6	40								
Nonparticipants			0	---	---	---	---	---	---	---	---	---	---	---	---	---	---	---	---	---	---	---	---	---								
No Information Provided			0	---	---	---	---	---	---	---	---	---	---	---	---	---	---	---	---	---	---	---	---	---								

* Students who took the paper STAAR with embedded supports version of the test are not included in the reporting category results.



STATE OF TEXAS ASSESSMENTS OF ACADEMIC READINESS
Constructed Responses Summary Report
ENGLISH I
Retested Students

STATEWIDE

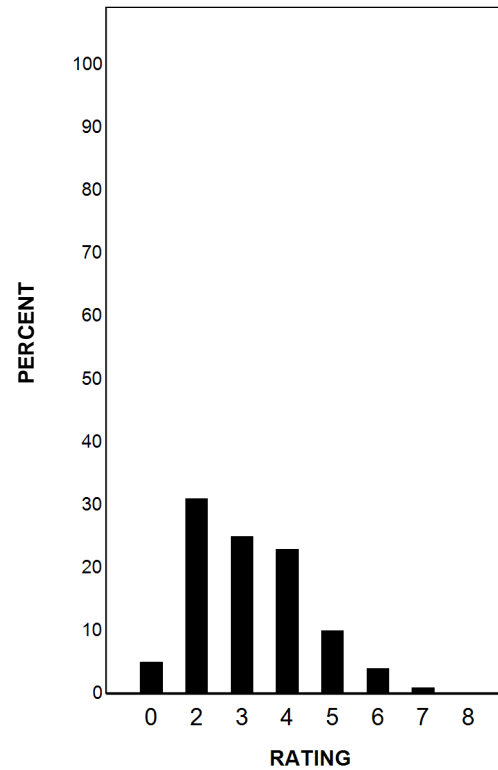
Report Date: SUMMER 2017
Date of Testing: SUMMER 2017

--- = No Data Reported For Fewer Than Five Students

Written Composition Rating Summary*

Expository Composition

Rating	#	%
0	4557	5
2	26412	31
3	21057	25
4	19757	23
5	8692	10
6	3262	4
7	495	1
8	83	0
Total	84315	100



Each composition has been scored independently by two readers. The written composition rating of 0-8 represents the summation of these scores.

* Students who took the paper STAAR with embedded supports version of the test are not included in this report.