

STATE OF TEXAS ASSESSMENTS OF ACADEMIC READINESS

Summary Report

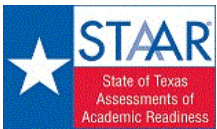
ENGLISH III

All Students

STATEWIDE

Report Date: SUMMER 2017
Date of Testing: SPRING 2017

Administration Summary			Number of Students Tested	Average Scale Score	Did Not Meet				Approaches				Meets				Masters				Results for Each Reporting Category											
																					Number Percent		1		2		3		4		5	
				Understanding/ Analysis Across Genres		Understanding/ Analysis of Literary Texts		Understanding/ Analysis of Informational Texts		Composition		Revision		Editing																		
Students Tested		10076 95																														
Students Not Tested																																
Absent		459 4																														
Other		72 1																														
Total Documents Submitted		10607 100																														
Legend			--- = No Data Reported For Fewer Than Five Students																													
				# %		# %		# %		# %		# %		# %		# %		# %		# %		# %		# %								
All Students			10076	3970	2955	29	7121	71	5149	51	1141	11	4.3	53	7.3	56	7.4	57	7.1	44	5.5	61	5.8	65								
Male			5081	3901	1778	35	3303	65	2298	45	482	9	4.1	51	6.9	53	7.2	55	6.7	42	5.3	59	5.5	61								
Female			4995	4039	1177	24	3818	76	2851	57	659	13	4.5	56	7.6	59	7.7	59	7.6	47	5.7	63	6.2	69								
No Information Provided			0	---	---	---	---	---	---	---	---	---	---	---	---	---	---	---	---	---	---	---	---	---								
Hispanic/Latino			7168	3973	2042	28	5126	72	3677	51	775	11	4.2	53	7.3	56	7.4	57	7.3	45	5.5	61	5.8	65								
American Indian or Alaska Native			17	4004	3	18	14	82	11	65	0	0	4.2	53	7.3	56	8.1	62	7.3	46	5.7	63	6.2	69								
Asian			83	4305	11	13	72	87	66	80	28	34	5.1	64	8.6	66	8.8	68	9.1	57	6.7	74	7.1	79								
Black or African American			1317	3817	549	42	768	58	493	37	81	6	3.9	49	6.5	50	6.8	52	6.0	38	4.9	55	5.4	59								
Native Hawaiian or Other Pacific Islander			3	---	---	---	---	---	---	---	---	---	---	---	---	---	---	---	---	---	---	---	---	---								
White			1407	4071	327	23	1080	77	852	61	244	17	4.7	59	7.8	60	7.9	61	7.2	45	5.9	66	6.3	70								
Two or More Races			81	4019	23	28	58	72	48	59	12	15	4.4	54	7.5	58	7.9	61	7.0	44	5.7	64	5.9	66								
No Information Provided			0	---	---	---	---	---	---	---	---	---	---	---	---	---	---	---	---	---	---	---	---	---								
Economically Disadvantaged		Yes	7250	3937	2280	31	4970	69	3505	48	669	9	4.1	52	7.1	55	7.3	56	7.0	44	5.4	60	5.7	63								
		No	2826	4054	675	24	2151	76	1644	58	472	17	4.6	58	7.7	59	7.8	60	7.3	46	5.8	65	6.2	69								
		No Information Provided	0	---	---	---	---	---	---	---	---	---	---	---	---	---	---	---	---	---	---	---	---	---								
Title I, Part A		Participants	7798	3981	2170	28	5628	72	4066	52	888	11	4.3	53	7.3	56	7.5	57	7.3	46	5.5	61	5.8	65								
		Nonparticipants	2276	3930	784	34	1492	66	1083	48	253	11	4.3	54	7.1	54	7.3	56	6.4	40	5.4	60	5.8	64								
		No Information Provided	2	---	---	---	---	---	---	---	---	---	---	---	---	---	---	---	---	---	---	---	---	---								
Migrant		Yes	144	3832	54	38	90	63	57	40	7	5	3.9	49	6.7	51	6.6	51	6.4	40	5.0	56	5.4	60								
		No	9930	3972	2899	29	7031	71	5092	51	1134	11	4.3	53	7.3	56	7.5	57	7.1	45	5.5	61	5.8	65								
		No Information Provided	2	---	---	---	---	---	---	---	---	---	---	---	---	---	---	---	---	---	---	---	---	---								
Limited English Proficient		Current LEP	889	3591	577	65	312	35	137	15	3	0	2.9	37	5.4	41	5.7	44	5.1	32	3.8	43	4.4	48								
		Non-LEP (Monitored 1st Year)	109	3998	31	28	78	72	60	55	8	7	4.5	56	7.4	57	7.8	60	7.4	47	5.5	61	5.7	63								
		Non-LEP (Monitored 2nd Year)	93	4001	23	25	70	75	47	51	11	12	4.2	53	7.5	57	7.4	57	7.9	49	5.4	60	6.0	66								
		Other Non-LEP	8984	4007	2323	26	6661	74	4905	55	1119	12	4.4	55	7.5	57	7.6	59	7.3	46	5.7	63	6.0	66								
		No Information Provided	1	---	---	---	---	---	---	---	---	---	---	---	---	---	---	---	---	---	---	---	---	---								
Bilingual		Participants	4	---	---	---	---	---	---	---	---	---	---	---	---	---	---	---	---	---	---	---	---	---								
		Nonparticipants	10071	3970	2953	29	7118	71	5146	51	1140	11	4.3	53	7.3	56	7.4	57	7.1	44	5.5	61	5.8	65								
		No Information Provided	1	---	---	---	---	---	---	---	---	---	---	---	---	---	---	---	---	---	---	---	---	---								
ESL		Participants	871	3589	567	65	304	35	132	15	3	0	2.9	36	5.4	41	5.7	44	5.1	32	3.8	43	4.3	48								
		Nonparticipants	9204	4006	2387	26	6817	74	5017	55	1138	12	4.4	55	7.4	57	7.6	59	7.3	46	5.7	63	6.0	66								
		No Information Provided	1	---	---	---	---	---	---	---	---	---	---	---	---	---	---	---	---	---	---	---	---	---								
Special Education		Yes	658	3460	524	80	134	20	57	9	4	1	2.7	33	4.6	36	4.9	38	4.1	26	3.4	38	3.7	41								
		No	9417	4005	2430	26	6987	74	5092	54	1137	12	4.4	55	7.4	57	7.6	59	7.3	46	5.6	63	6.0	67								
		No Information Provided	1	---	---	---	---	---	---	---	---	---	---	---	---	---	---	---	---	---	---	---	---	---								
Gifted/Talented		Participants	739	4349	50	7	689	93	625	85	259	35	5.5	69	9.1	70	9.2	71	8.8	55	7.0	77	7.3	81								
		Nonparticipants	9335	3940	2904	31	6431	69	4523	48	882	9	4.2	52	7.1	55	7.3	56	7.0	44	5.4	60	5.7	64								
		No Information Provided	2	---	---	---	---	---	---	---	---	---	---	---	---	---	---	---	---	---	---	---	---	---								
At-Risk		Yes	5206	3758	2396	46	2810	54	1584	30	144	3	3.6	45	6.2	48	6.5	50	6.0	38	4.6	52	5.0	56								
		No	4869	4196	559	11	4310	89	3564	73	997	20	5.0	63	8.4	64	8.5	65	8.3	52	6.4	71	6.7	74								
		No Information Provided	1	---	---	---	---	---	---	---	---	---	---	---	---	---	---	---	---	---	---	---	---	---								
Career/Technical Education		Participants	7478	3943	2328	31	5150	69	3627	49	752	10	4.2	53	7.1	55	7.3	56	6.9	43	5.4	60	5.8	64								
		Nonparticipants	2595	4045	627	24	1968	76	1519	59	389	15	4.4	55	7.6	59	7.8	60	7.8	49	5.7	64	6.0	67								
		No Information Provided	3	---	---	---	---	---	---	---	---	---	---	---	---	---	---	---	---	---	---	---	---	---								



STATE OF TEXAS ASSESSMENTS OF ACADEMIC READINESS
Constructed Responses Summary Report
ENGLISH III
All Students

STATEWIDE

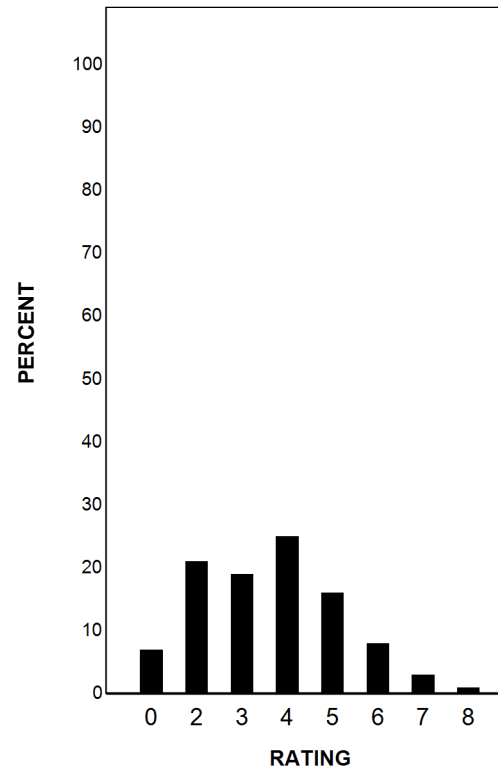
Report Date: SUMMER 2017
Date of Testing: SPRING 2017

--- = No Data Reported For Fewer Than Five Students

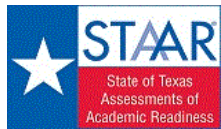
Written Composition Rating Summary

Analytical Composition

Rating	#	%
0	678	7
2	2153	21
3	1933	19
4	2513	25
5	1604	16
6	805	8
7	300	3
8	90	1
Total	10076	100



Each composition has been scored independently by two readers. The written composition rating of 0-8 represents the summation of these scores.



STATE OF TEXAS ASSESSMENTS OF ACADEMIC READINESS

Summary Report

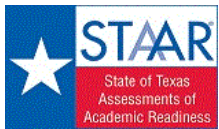
ENGLISH III

First-Time Tested Students

STATEWIDE

Report Date: SUMMER 2017
Date of Testing: SPRING 2017

Administration Summary			Number of Students Tested	Average Scale Score	Did Not Meet		Approaches		Meets		Masters		Results for Each Reporting Category												
													1	2	3	4	5	6							
Number	Percent											Understanding/ Analysis Across Genres		Understanding/ Analysis of Literary Texts		Understanding/ Analysis of Informational Texts		Composition		Revision		Editing			
Students Tested			10057	95																					
Students Not Tested																									
Absent			450	4																					
Other			72	1																					
Total Documents Submitted			10579	100																					
Legend			---																						
--- = No Data Reported For Fewer Than Five Students																									
			#		#		#		#		#		#		#		#		#		#		#		
			%		%		%		%		%		%		%		%		%		%		%		
			8		13		13		16		9		9												
All Students			10057	3971	2941	29	7116	71	5147	51	1141	11	4.3	53	7.3	56	7.4	57	7.1	44	5.5	61	5.8	65	
Male			5066	3902	1766	35	3300	65	2297	45	482	10	4.1	51	6.9	53	7.2	55	6.7	42	5.3	59	5.5	61	
Female			4991	4040	1175	24	3816	76	2850	57	659	13	4.5	56	7.6	59	7.7	59	7.6	47	5.7	63	6.2	69	
No Information Provided			0	---	---	---	---	---	---	---	---	---	---	---	---	---	---	---	---	---	---	---	---	---	
Hispanic/Latino			7150	3974	2029	28	5121	72	3675	51	775	11	4.2	53	7.3	56	7.5	57	7.3	45	5.5	61	5.8	65	
American Indian or Alaska Native			17	4004	3	18	14	82	11	65	0	0	4.2	53	7.3	56	8.1	62	7.3	46	5.7	63	6.2	69	
Asian			83	4305	11	13	72	87	66	80	28	34	5.1	64	8.6	66	8.8	68	9.1	57	6.7	74	7.1	79	
Black or African American			1317	3817	549	42	768	58	493	37	81	6	3.9	49	6.5	50	6.8	52	6.0	38	4.9	55	5.4	59	
Native Hawaiian or Other Pacific Islander			3	---	---	---	---	---	---	---	---	---	---	---	---	---	---	---	---	---	---	---	---	---	
White			1406	4072	326	23	1080	77	852	61	244	17	4.7	59	7.8	60	7.9	61	7.2	45	5.9	66	6.3	70	
Two or More Races			81	4019	23	28	58	72	48	59	12	15	4.4	54	7.5	58	7.9	61	7.0	44	5.7	64	5.9	66	
No Information Provided			0	---	---	---	---	---	---	---	---	---	---	---	---	---	---	---	---	---	---	---	---	---	
Economically Disadvantaged																									
			Yes	7235	3938	2269	31	4966	69	3503	48	669	9	4.1	52	7.1	55	7.3	56	7.0	44	5.4	60	5.7	63
			No	2822	4055	672	24	2150	76	1644	58	472	17	4.6	58	7.7	59	7.8	60	7.3	46	5.8	65	6.2	69
			No Information Provided	0	---	---	---	---	---	---	---	---	---	---	---	---	---	---	---	---	---	---	---	---	---
Title I, Part A																									
			Participants	7782	3982	2158	28	5624	72	4065	52	888	11	4.3	53	7.3	56	7.5	58	7.3	46	5.5	61	5.9	65
			Nonparticipants	2273	3930	782	34	1491	66	1082	48	253	11	4.3	54	7.1	54	7.3	56	6.4	40	5.4	60	5.8	64
			No Information Provided	2	---	---	---	---	---	---	---	---	---	---	---	---	---	---	---	---	---	---	---	---	---
Migrant																									
			Yes	144	3832	54	38	90	63	57	40	7	5	3.9	49	6.7	51	6.6	51	6.4	40	5.0	56	5.4	60
			No	9911	3973	2885	29	7026	71	5090	51	1134	11	4.3	53	7.3	56	7.5	57	7.1	45	5.5	61	5.8	65
			No Information Provided	2	---	---	---	---	---	---	---	---	---	---	---	---	---	---	---	---	---	---	---	---	---
Limited English Proficient																									
			Current LEP	885	3590	575	65	310	35	137	15	3	0	2.9	37	5.4	41	5.7	44	5.1	32	3.8	43	4.3	48
			Non-LEP (Monitored 1st Year)	109	3998	31	28	78	72	60	55	8	7	4.5	56	7.4	57	7.8	60	7.4	47	5.5	61	5.7	63
			Non-LEP (Monitored 2nd Year)	93	4001	23	25	70	75	47	51	11	12	4.2	53	7.5	57	7.4	57	7.9	49	5.4	60	6.0	66
			Other Non-LEP	8969	4007	2311	26	6658	74	4903	55	1119	12	4.4	55	7.5	57	7.6	59	7.3	46	5.7	63	6.0	67
			No Information Provided	1	---	---	---	---	---	---	---	---	---	---	---	---	---	---	---	---	---	---	---	---	---
Bilingual																									
			Participants	4	---	---	---	---	---	---	---	---	---	---	---	---	---	---	---	---	---	---	---	---	---
			Nonparticipants	10052	3971	2939	29	7113	71	5144	51	1140	11	4.3	53	7.3	56	7.4	57	7.1	44	5.5	61	5.8	65
			No Information Provided	1	---	---	---	---	---	---	---	---	---	---	---	---	---	---	---	---	---	---	---	---	---
ESL																									
			Participants	867	3589	565	65	302	35	132	15	3	0	2.9	37	5.4	41	5.7	43	5.1	32	3.8	43	4.3	48
			Nonparticipants	9189	4007	2375	26	6814	74	5015	55	1138	12	4.4	55	7.4	57	7.6	59	7.3	46	5.7	63	6.0	66
			No Information Provided	1	---	---	---	---	---	---	---	---	---	---	---	---	---	---	---	---	---	---	---	---	---
Special Education																									
			Yes	654	3458	522	80	132	20	57	9	4	1	2.7	34	4.6	36	4.9	38	4.1	26	3.4	37	3.7	41
			No	9402	4006	2418	26	6984	74	5090	54	1137	12	4.4	55	7.5	57	7.6	59	7.3	46	5.6	63	6.0	67
			No Information Provided	1	---	---	---	---	---	---	---	---	---	---	---	---	---	---	---	---	---	---	---	---	---
Gifted/Talented																									
			Participants	739	4349	50	7	689	93	625	85	259	35	5.5	69	9.1	70	9.2	71	8.8	55	7.0	77	7.3	81
			Nonparticipants	9316	3941	2890	31	6426	69	4521	49	882	9	4.2	52	7.1	55	7.3	56	7.0	44	5.4	60	5.7	64
			No Information Provided	2	---	---	---	---	---	---	---	---	---	---	---	---	---	---	---	---	---	---	---	---	---
At-Risk																									
			Yes	5191	3759	2384	46	2807	54	1583	30	144	3	3.6	45	6.2	48	6.5	50	6.0	38	4.6	52	5.0	56
			No	4865	4196	557	11	4308	89	3563	73	997	20	5.0	63	8.4	64	8.5	65	8.3	52	6.4	71	6.7	74
			No Information Provided	1	---	---	---	---	---	---	---	---	---	---	---	---	---	---	---	---	---	---	---	---	---
Career/Technical Education																									
			Participants	7465	3944	2319	31	5146	69	3626	49	752	10	4.2	53	7.1	55	7.3	56	6.9	43	5.4	60	5.8	64
			Nonparticipants	2589	4047	622	24	1967	76	1518	59	389	15	4.4	55	7.6	59	7.8	60	7.8	49	5.7	64	6.0	67
			No Information Provided	3	---	---	---	---	---	---	---	---	---	---	---	---	---	---	---	---	---	---	---	---	---



STATE OF TEXAS ASSESSMENTS OF ACADEMIC READINESS
Constructed Responses Summary Report
ENGLISH III
First-Time Tested Students

STATEWIDE

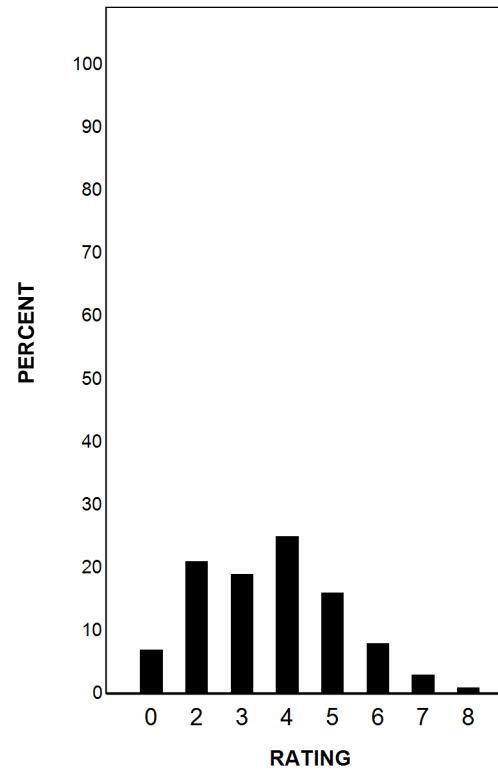
Report Date: SUMMER 2017
Date of Testing: SPRING 2017

--- = No Data Reported For Fewer Than Five Students

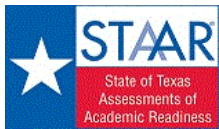
Written Composition Rating Summary

Analytical Composition

Rating	#	%
0	674	7
2	2145	21
3	1931	19
4	2510	25
5	1602	16
6	805	8
7	300	3
8	90	1
Total	10057	100



Each composition has been scored independently by two readers. The written composition rating of 0-8 represents the summation of these scores.



STATE OF TEXAS ASSESSMENTS OF ACADEMIC READINESS

Summary Report

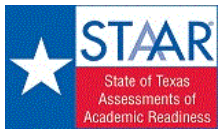
ENGLISH III

Retested Students

STATEWIDE

Report Date: SUMMER 2017
Date of Testing: SPRING 2017

Administration Summary			Number of Students Tested	Average Scale Score	Did Not Meet		Approaches		Meets		Masters		Results for Each Reporting Category																					
													1	2	3	4	5	6																
Number	Percent											Understanding/ Analysis Across Genres		Understanding/ Analysis of Literary Texts		Understanding/ Analysis of Informational Texts		Composition		Revision		Editing												
Legend																																		
--- = No Data Reported For Fewer Than Five Students																																		
			Number of Points Possible																															
			8		13		13		16		9		9																					
			Number of Points Scored																															
			#		#		#		#		#		#		#		#		#		#		#											
			%		%		%		%		%		%		%		%		%		%		%											
All Students			19	3551	14	74	5	26	2	11	0	0	2.3	28	5.0	38	5.9	46	4.6	29	3.7	42	4.7	53										
Male			15	3529	12	80	3	20	1	7	0	0	2.1	27	5.0	38	5.8	45	4.8	30	3.4	38	4.6	51										
Female			4	---	---	---	---	---	---	---	---	---	---	---	---	---	---	---	---	---	---	---	---	---										
No Information Provided			0	---	---	---	---	---	---	---	---	---	---	---	---	---	---	---	---	---	---	---	---	---										
Hispanic/Latino			18	3557	13	72	5	28	2	11	0	0	2.3	28	5.1	39	5.9	46	4.7	29	3.8	43	4.7	52										
American Indian or Alaska Native			0	---	---	---	---	---	---	---	---	---	---	---	---	---	---	---	---	---	---	---	---	---										
Asian			0	---	---	---	---	---	---	---	---	---	---	---	---	---	---	---	---	---	---	---	---	---										
Black or African American			0	---	---	---	---	---	---	---	---	---	---	---	---	---	---	---	---	---	---	---	---	---										
Native Hawaiian or Other Pacific Islander			0	---	---	---	---	---	---	---	---	---	---	---	---	---	---	---	---	---	---	---	---	---										
White			1	---	---	---	---	---	---	---	---	---	---	---	---	---	---	---	---	---	---	---	---	---										
Two or More Races			0	---	---	---	---	---	---	---	---	---	---	---	---	---	---	---	---	---	---	---	---	---										
No Information Provided			0	---	---	---	---	---	---	---	---	---	---	---	---	---	---	---	---	---	---	---	---	---										
Economically Disadvantaged			Yes	15	3534	11	73	4	27	2	13	0	0	2.2	28	5.2	40	5.8	45	4.8	30	3.7	41	4.4	49									
			No	4	---	---	---	---	---	---	---	---	---	---	---	---	---	---	---	---	---	---	---	---	---									
			No Information Provided	0	---	---	---	---	---	---	---	---	---	---	---	---	---	---	---	---	---	---	---	---	---									
Title I, Part A			Participants	16	3536	12	75	4	25	1	6	0	0	2.3	28	5.1	39	5.6	43	4.6	29	3.8	42	4.6	51									
			Nonparticipants	3	---	---	---	---	---	---	---	---	---	---	---	---	---	---	---	---	---	---	---	---	---									
			No Information Provided	0	---	---	---	---	---	---	---	---	---	---	---	---	---	---	---	---	---	---	---	---	---									
Migrant			Yes	0	---	---	---	---	---	---	---	---	---	---	---	---	---	---	---	---	---	---	---	---	---									
			No	19	3551	14	74	5	26	2	11	0	0	2.3	28	5.0	38	5.9	46	4.6	29	3.7	42	4.7	53									
			No Information Provided	0	---	---	---	---	---	---	---	---	---	---	---	---	---	---	---	---	---	---	---	---	---									
Limited English Proficient			Current LEP	4	---	---	---	---	---	---	---	---	---	---	---	---	---	---	---	---	---	---	---	---	---									
			Non-LEP (Monitored 1st Year)	0	---	---	---	---	---	---	---	---	---	---	---	---	---	---	---	---	---	---	---	---	---									
			Non-LEP (Monitored 2nd Year)	0	---	---	---	---	---	---	---	---	---	---	---	---	---	---	---	---	---	---	---	---	---									
			Other Non-LEP	15	3509	12	80	3	20	2	13	0	0	2.4	30	5.1	39	5.7	44	3.9	24	3.6	40	4.5	50									
			No Information Provided	0	---	---	---	---	---	---	---	---	---	---	---	---	---	---	---	---	---	---	---	---	---									
Bilingual			Participants	0	---	---	---	---	---	---	---	---	---	---	---	---	---	---	---	---	---	---	---	---	---									
			Nonparticipants	19	3551	14	74	5	26	2	11	0	0	2.3	28	5.0	38	5.9	46	4.6	29	3.7	42	4.7	53									
			No Information Provided	0	---	---	---	---	---	---	---	---	---	---	---	---	---	---	---	---	---	---	---	---	---									
ESL			Participants	4	---	---	---	---	---	---	---	---	---	---	---	---	---	---	---	---	---	---	---	---	---									
			Nonparticipants	15	3509	12	80	3	20	2	13	0	0	2.4	30	5.1	39	5.7	44	3.9	24	3.6	40	4.5	50									
			No Information Provided	0	---	---	---	---	---	---	---	---	---	---	---	---	---	---	---	---	---	---	---	---	---									
Special Education			Yes	4	---	---	---	---	---	---	---	---	---	---	---	---	---	---	---	---	---	---	---	---	---									
			No	15	3526	12	80	3	20	2	13	0	0	2.3	29	5.2	40	5.6	43	4.3	27	3.8	42	4.5	50									
			No Information Provided	0	---	---	---	---	---	---	---	---	---	---	---	---	---	---	---	---	---	---	---	---	---									
Gifted/Talented			Participants	0	---	---	---	---	---	---	---	---	---	---	---	---	---	---	---	---	---	---	---	---	---									
			Nonparticipants	19	3551	14	74	5	26	2	11	0	0	2.3	28	5.0	38	5.9	46	4.6	29	3.7	42	4.7	53									
			No Information Provided	0	---	---	---	---	---	---	---	---	---	---	---	---	---	---	---	---	---	---	---	---	---									
At-Risk			Yes	15	3509	12	80	3	20	1	7	0	0	2.1	26	4.9	37	5.5	43	4.5	28	3.8	42	4.4	49									
			No	4	---	---	---	---	---	---	---	---	---	---	---	---	---	---	---	---	---	---	---	---	---									
			No Information Provided	0	---	---	---	---	---	---	---	---	---	---	---	---	---	---	---	---	---	---	---	---	---									
Career/Technical Education			Participants	13	3560	9	69	4	31	1	8	0	0	1.8	23	4.8	37	6.3	49	5.2	33	3.8	42	4.6	51									
			Nonparticipants	6	3530	5	83	1	17	1	17	0	0	3.2	40	5.3	41	5.2	40	3.3	21	3.7	41	5.0	56									
			No Information Provided	0	---	---	---	---	---	---	---	---	---	---	---	---	---	---	---	---	---	---	---	---	---									



STATE OF TEXAS ASSESSMENTS OF ACADEMIC READINESS
Constructed Responses Summary Report
ENGLISH III
Retested Students

STATEWIDE

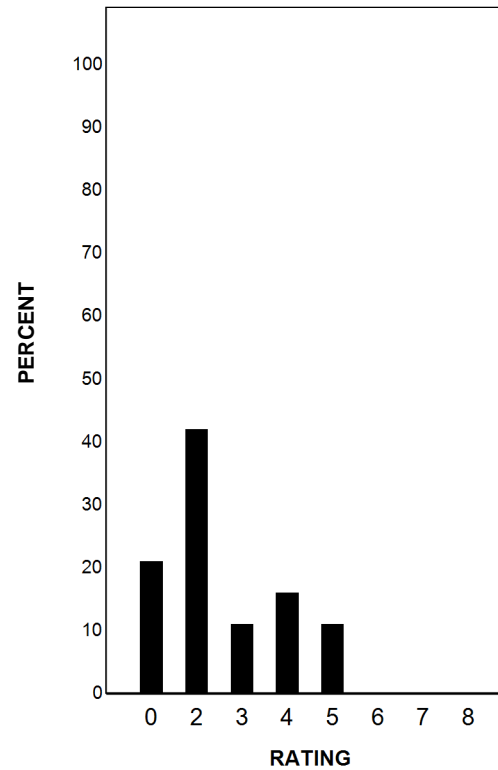
Report Date: SUMMER 2017
Date of Testing: SPRING 2017

--- = No Data Reported For Fewer Than Five Students

Written Composition Rating Summary

Analytical Composition

Rating	#	%
0	4	21
2	8	42
3	2	11
4	3	16
5	2	11
6	0	0
7	0	0
8	0	0
Total	19	100



Each composition has been scored independently by two readers. The written composition rating of 0-8 represents the summation of these scores.