

STATE OF TEXAS ASSESSMENTS OF ACADEMIC READINESS

Summary Report

ENGLISH II

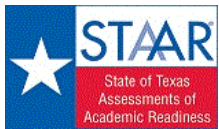
All Students

STATEWIDE

Report Date: SPRING 2017
Date of Testing: SPRING 2017

Administration Summary			Number of Students Tested	Average Scale Score	Did Not Meet		Approaches		Meets		Masters		Results for Each Reporting Category*																				
													Number	Percent	1		2		3		4		5		6								
Students Tested	435855	98											Understanding/ Analysis Across Genres	Understanding/ Analysis of Literary Texts	Understanding/ Analysis of Informational Texts	Composition	Revision	Editing	Number of Points Possible														
	Students Not Tested	Absent																	8714	2	Other	919	0	Total Documents Submitted	445488	100	8		13		13		16
Legend													Number of Points Scored																				
--- = No Data Reported For Fewer Than Five Students													#	%	#	%	#	%	#	%	#	%	#	%	#	%	#	%	#	%	#	%	
All Students	435855	98											3950	164150	38	271705	62	202754	47	28295	6	5.3	66	8.4	64	8.2	63	9.3	58	6.3	70	6.3	70
Male	229071												3860	100232	44	128839	56	91842	40	10410	5	5.1	64	7.9	61	7.8	60	8.7	54	6.2	69	6.0	67
Female	206772												4050	63913	31	142859	69	110909	54	17884	9	5.5	69	8.9	68	8.6	66	10.0	62	6.5	73	6.7	75
No Information Provided	12												3776	5	42	7	58	3	25	1	8	4.8	59	7.3	56	8.0	62	8.3	52	5.3	59	5.9	66
Hispanic/Latino	232375		3838	103787	45	128588	55	88301	38	7729	3	5.0	62	7.8	60	7.7	60	8.8	55	6.0	67	6.0	67										
American Indian or Alaska Native	1644		3901	662	40	982	60	730	44	81	5	5.2	65	8.2	63	8.0	62	9.0	56	6.3	70	6.1	68										
Asian	17632		4372	3242	18	14390	82	12879	73	4333	25	6.2	78	9.8	76	9.7	74	11.5	72	7.2	80	7.5	83										
Black or African American	58883		3776	29343	50	29540	50	19300	33	1511	3	4.9	61	7.6	59	7.4	57	8.4	53	5.9	65	5.8	65										
Native Hawaiian or Other Pacific Islander	642		3926	257	40	385	60	283	44	41	6	5.3	67	8.2	63	7.9	61	9.4	59	6.2	68	6.2	69										
White	116679		4184	24842	21	91837	79	76413	65	13650	12	6.1	76	9.5	73	9.2	71	10.3	64	7.1	79	7.0	78										
Two or More Races	7774		4150	1910	25	5864	75	4778	61	937	12	5.9	74	9.3	71	9.0	70	10.1	63	6.9	77	6.9	76										
No Information Provided	226		3754	107	47	119	53	70	31	13	6	4.8	60	7.4	57	7.4	57	7.9	50	5.8	64	5.5	61										
Economically Disadvantaged	Yes	246027	3786	119587	49	126440	51	83293	34	5934	2	4.8	60	7.6	59	7.5	58	8.5	53	5.9	65	5.9	65										
	No	189590	4163	44434	23	145156	77	119393	63	22346	12	5.9	74	9.3	72	9.1	70	10.3	64	7.0	78	6.9	77										
	No Information Provided	238	3702	129	54	109	46	68	29	15	6	4.5	57	7.2	56	7.1	55	7.8	48	5.6	62	5.4	60										
Title I, Part A	Participants	199578	3828	91324	46	108254	54	74542	37	6773	3	4.9	62	7.8	60	7.7	59	8.7	54	6.0	66	6.0	67										
	Nonparticipants	236040	4053	72701	31	163339	69	128143	54	21506	9	5.6	70	8.8	68	8.6	66	9.8	61	6.6	74	6.6	73										
	No Information Provided	237	3707	125	53	112	47	69	29	16	7	4.5	57	7.1	55	7.2	56	7.8	49	5.6	62	5.4	60										
Migrant	Yes	2647	3645	1624	61	1023	39	598	23	23	1	4.3	54	6.9	53	6.8	52	7.9	49	5.3	59	5.5	61										
	No	432815	3952	162287	37	270528	63	202063	47	28257	7	5.3	66	8.4	64	8.2	63	9.3	58	6.3	71	6.3	71										
	No Information Provided	393	3608	239	61	154	39	93	24	15	4	4.2	53	6.6	51	6.7	52	7.4	46	5.3	59	5.1	57										
Limited English Proficient	Current LEP	55597	3414	46199	83	9398	17	3418	6	66	0	3.4	43	5.5	42	5.7	44	6.9	43	4.4	49	4.6	51										
	Non-LEP (Monitored 1st Year)	3936	3840	1618	41	2318	59	1312	33	63	2	4.9	62	7.9	61	7.9	61	9.1	57	6.0	66	6.3	70										
	Non-LEP (Monitored 2nd Year)	6637	3836	2803	42	3834	58	2052	31	66	1	5.0	62	7.9	61	7.9	61	8.9	56	6.0	67	6.2	69										
	Other Non-LEP	369422	4034	113388	31	256034	69	195897	53	28085	8	5.6	70	8.8	68	8.6	66	9.6	60	6.6	74	6.6	73										
	No Information Provided	263	3704	142	54	121	46	75	29	15	6	4.5	57	7.1	55	7.1	54	7.9	49	5.7	63	5.4	60										
Bilingual	Participants	472	4149	97	21	375	79	316	67	38	8	5.8	72	9.4	72	9.0	69	10.6	66	6.8	76	7.2	80										
	Nonparticipants	435084	3950	163878	38	271206	62	202363	47	28242	6	5.3	66	8.4	64	8.2	63	9.3	58	6.3	70	6.3	70										
	No Information Provided	299	3651	175	59	124	41	75	25	15	5	4.3	54	6.8	52	6.8	53	7.6	48	5.5	61	5.3	59										
ESL	Participants	52317	3411	43588	83	8729	17	3146	6	53	0	3.4	42	5.5	42	5.7	44	6.9	43	4.4	49	4.6	51										
	Nonparticipants	383237	4024	120388	31	262849	69	199531	52	28227	7	5.6	70	8.8	67	8.5	66	9.6	60	6.6	73	6.6	73										
	No Information Provided	301	3656	174	58	127	42	77	26	15	5	4.3	54	6.9	53	6.9	53	7.6	48	5.5	61	5.4	60										
Special Education	Yes	35796	3358	30692	86	5104	14	2251	6	109	0	3.4	43	5.5	42	5.3	41	6.2	39	4.5	50	4.0	44										
	No	399788	4003	133309	33	266479	67	200428	50	28171	7	5.5	68	8.6	66	8.4	65	9.5	60	6.5	72	6.6	73										
	No Information Provided	271	3704	149	55	122	45	75	28	15	6	4.6	57	7.1	55	7.1	55	7.9	49	5.7	63	5.4	60										
Gifted/Talented	Participants	35459	4636	989	3	34470	97	32860	93	11397	32	7.0	88	11.2	86	10.9	84	12.2	76	8.0	89	8.2	91										
	Nonparticipants	400122	3889	163011	41	237111	59	169817	42	16883	4	5.2	64	8.1	62	7.9	61	9.0	56	6.2	69	6.2	69										
	No Information Provided	274	3706	150	55	124	45	77	28	15	5	4.5	57	7.2	55	7.1	55	7.9	49	5.6	62	5.4	60										
At-Risk	Yes	240988	3645	145737	60	95251	40	49669	21	1556	1	4.4	55	6.9	53	6.8	53	7.9	49	5.5	61	5.4	60										
	No	194639	4328	18291	9	176348	91	153019	79	26724	14	6.5	81	10.2	78	9.9	76	11.0	69	7.4	83	7.5	84										
	No Information Provided	228	3724	122	54	106	46	66	29	15	7	4.6	58	7.3	56	7.3	56	7.8	49	5.6	62	5.4	60										
Career/Technical Education	Participants	327902	3940	122661	37	205241	63	150771	46	17903	5	5.3	66	8.4	64	8.2	63	9.2	58	6.3	70	6.3	70										
	Nonparticipants	107704	3979	41351	38	66353	62	51909	48	10377	10	5.3	66	8.4	64	8.2	63	9.4	59	6.3	71	6.4	71										
	No Information Provided	249	3698	138	55	111	45	74	30	15	6	4.5	57	7.1	54	7.1	55	7.7	48	5.5	61	5.4	60										

* Students who took the paper STAAR with embedded supports version of the test are not included in the reporting category results.



STATE OF TEXAS ASSESSMENTS OF ACADEMIC READINESS
Constructed Responses Summary Report
ENGLISH II
All Students

STATEWIDE

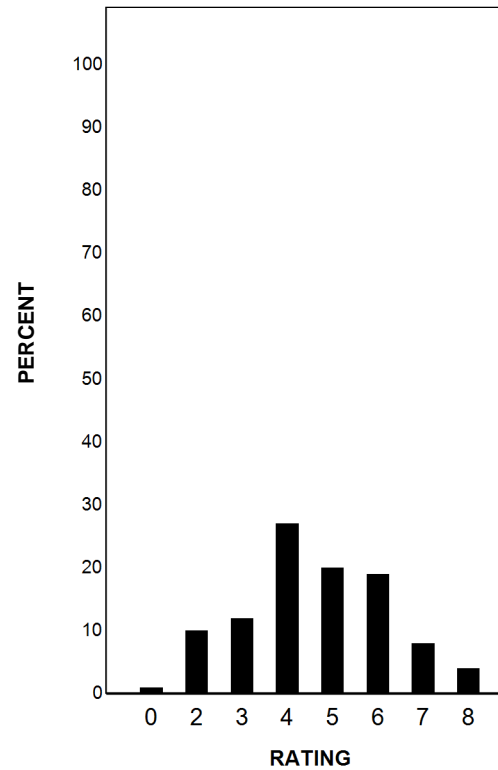
Report Date: SPRING 2017
Date of Testing: SPRING 2017

--- = No Data Reported For Fewer Than Five Students

Written Composition Rating Summary*

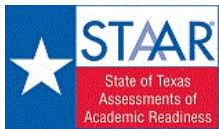
Persuasive Composition

Rating	#	%
0	4261	1
2	42369	10
3	51380	12
4	115762	27
5	85174	20
6	83424	19
7	35218	8
8	18221	4
Total	435809	100



Each composition has been scored independently by two readers. The written composition rating of 0-8 represents the summation of these scores.

* Students who took the Paper STAAR with Embedded Supports version of the test are not included in this report.



STATE OF TEXAS ASSESSMENTS OF ACADEMIC READINESS

Summary Report

ENGLISH II

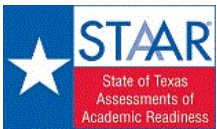
First-Time Tested Students

STATEWIDE

Report Date: SPRING 2017
Date of Testing: SPRING 2017

Administration Summary			Number of Students Tested	Average Scale Score	Results for Each Reporting Category*																					
					Number	Percent	Did Not Meet		Approaches		Meets		Masters		1		2		3		4		5		6	
		#					%	#	%	#	%	#	%	#	%	#	%	#	%	#	%	#	%	#	%	
					Number of Points Possible																					Number of Points Scored
										8		13		13		16		9		9						
Legend																										
--- = No Data Reported For Fewer Than Five Students																										
All Students					368728	4043	108767	29	259961	71	200563	54	28295	8	5.6	70	8.8	68	8.6	66	9.7	61	6.6	74	6.7	74
Male					187609	3956	65702	35	121907	65	90493	48	10410	6	5.5	68	8.4	65	8.3	64	9.1	57	6.5	72	6.4	71
Female					181107	4132	43060	24	138047	76	110067	61	17884	10	5.8	72	9.3	71	9.0	69	10.3	64	6.8	76	7.0	78
No Information Provided			12	3776	5	42	7	58	3	25	1	8	4.8	59	7.3	56	8.0	62	8.3	52	5.3	59	5.9	66		
Hispanic/Latino			188062	3933	66936	36	121126	64	87003	46	7729	4	5.3	66	8.4	64	8.2	63	9.2	58	6.3	70	6.4	71		
American Indian or Alaska Native			1378	4000	434	31	944	69	721	52	81	6	5.5	69	8.7	67	8.5	65	9.4	59	6.6	73	6.5	72		
Asian			16214	4456	2013	12	14201	88	12844	79	4333	27	6.4	81	10.2	79	10.0	77	11.8	74	7.4	82	7.7	86		
Black or African American			46313	3867	18967	41	27346	59	18863	41	1511	3	5.2	65	8.1	62	7.8	60	8.8	55	6.2	68	6.2	68		
Native Hawaiian or Other Pacific Islander			548	4009	178	32	370	68	278	51	41	7	5.6	70	8.7	67	8.3	64	9.8	61	6.4	71	6.5	73		
White			108857	4235	18745	17	90112	83	76032	70	13650	13	6.2	78	9.7	75	9.5	73	10.5	66	7.2	80	7.2	80		
Two or More Races			7161	4209	1412	20	5749	80	4753	66	937	13	6.1	76	9.6	74	9.3	72	10.4	65	7.1	79	7.1	79		
No Information Provided			195	3801	82	42	113	58	69	35	13	7	5.0	62	7.6	59	7.5	58	8.2	51	5.9	66	5.6	63		
Economically Disadvantaged																										
			Yes	195729	3877	77680	40	118049	60	81818	42	5934	3	5.1	64	8.1	63	7.9	61	8.9	56	6.2	68	6.2	69	
			No	172789	4230	30977	18	141812	82	118679	69	22346	13	6.1	77	9.7	74	9.4	72	10.6	66	7.2	80	7.2	80	
			No Information Provided	210	3718	110	52	100	48	66	31	15	7	4.6	58	7.3	56	7.2	55	7.8	49	5.6	62	5.3	59	
Title I, Part A																										
			Participants	159536	3929	57862	36	101674	64	73355	46	6773	4	5.3	66	8.4	64	8.2	63	9.1	57	6.3	70	6.4	71	
			Nonparticipants	208985	4130	50800	24	158185	76	127142	61	21506	10	5.9	73	9.2	71	9.0	69	10.1	63	6.9	76	6.9	76	
			No Information Provided	207	3724	105	51	102	49	66	32	16	8	4.6	58	7.2	56	7.3	56	7.9	49	5.6	62	5.4	60	
Migrant																										
			Yes	1811	3753	903	50	908	50	580	32	23	1	4.7	58	7.6	58	7.3	57	8.3	52	5.6	63	5.9	66	
			No	366625	4044	107706	29	258919	71	199895	55	28257	8	5.6	70	8.9	68	8.6	66	9.7	61	6.6	74	6.7	74	
			No Information Provided	292	3676	158	54	134	46	88	30	15	5	4.5	56	7.0	54	7.1	55	7.6	47	5.5	61	5.3	59	
Limited English Proficient																										
			Current LEP	34271	3455	26849	78	7422	22	3148	9	66	0	3.6	45	5.7	44	5.9	46	7.0	44	4.6	51	4.8	53	
			Non-LEP (Monitored 1st Year)	3521	3886	1276	36	2245	64	1299	37	63	2	5.1	64	8.2	63	8.1	62	9.3	58	6.1	68	6.4	72	
			Non-LEP (Monitored 2nd Year)	6131	3857	2440	40	3691	60	2018	33	66	1	5.0	63	8.1	62	8.0	61	9.0	56	6.1	68	6.3	70	
			Other Non-LEP	324581	4110	78089	24	246492	76	194026	60	28085	9	5.8	73	9.2	71	8.9	69	10.0	62	6.9	76	6.9	76	
			No Information Provided	224	3737	113	50	111	50	72	32	15	7	4.6	58	7.3	56	7.3	56	8.0	50	5.7	64	5.4	60	
Bilingual																										
			Participants	447	4190	76	17	371	83	315	70	38	9	6.0	74	9.6	74	9.2	71	10.8	68	7.0	78	7.3	81	
			Nonparticipants	368035	4043	108559	29	259476	71	200176	54	28242	8	5.6	70	8.8	68	8.6	66	9.7	61	6.6	74	6.7	74	
			No Information Provided	246	3688	132	54	114	46	72	29	15	6	4.4	55	7.1	54	7.0	54	7.7	48	5.6	62	5.4	60	
ESL																										
			Participants	31998	3452	25124	79	6874	21	2891	9	53	0	3.6	45	5.7	44	5.9	45	7.0	44	4.6	51	4.8	53	
			Nonparticipants	336479	4099	83510	25	252969	75	197598	59	28227	8	5.8	73	9.1	70	8.9	68	9.9	62	6.8	76	6.8	76	
			No Information Provided	251	3694	133	53	118	47	74	29	15	6	4.4	55	7.1	55	7.1	54	7.7	48	5.6	63	5.4	60	
Special Education																										
			Yes	26449	3377	22072	83	4377	17	2147	8	109	0	3.5	44	5.6	43	5.5	42	6.2	39	4.6	51	4.1	45	
			No	342050	4094	86578	25	255472	75	198343	58	28171	8	5.8	72	9.1	70	8.9	68	10.0	62	6.8	76	6.9	76	
			No Information Provided	229	3741	117	51	112	49	73	32	15	7	4.7	59	7.3	56	7.3	56	8.0	50	5.8	64	5.4	60	
Gifted/Talented																										
			Participants	35179	4644	794	2	34385	98	32829	93	11397	32	7.0	88	11.2	86	11.0	84	12.2	76	8.1	90	8.3	92	
			Nonparticipants	333313	3979	107851	32	225462	68	167660	50	16883	5	5.5	68	8.6	66	8.4	65	9.4	59	6.5	72	6.5	72	
			No Information Provided	236	3732	122	52	114	48	74	31	15	6	4.6	58	7.3	56	7.3	56	7.9	49	5.7	63	5.4	60	
At-Risk																										
			Yes	177708	3719	93255	52	84453	48	47723	27	1556	1	4.7	58	7.3	56	7.2	55	8.2	51	5.7	64	5.7	63	
			No	190819	4344	15409	8	175410	92	152776	80	26724	14	6.5	81	10.3	79	10.0	77	11.1	69	7.5	83	7.6	84	
			No Information Provided	201	3744	103	51	98	49	64	32	15	7	4.7	59	7.4	57	7.3	56	7.9	49	5.7	63	5.4	60	
Career/Technical Education																										
			Participants	278228	4028	81926	29	196302	71	149170	54	17903	6	5.6	70	8.8	68	8.6	66	9.6	60	6.6	74	6.6	74	
			Nonparticipants	90293	4088	26732	30	63561	70	51324	57	10377	11	5.7	71	8.9	69	8.7	67	9.9	62	6.7	74	6.7	75	
			No Information Provided	207	3724	109	53	98	47	69	33	15	7	4.6	58	7.2	55	7.2	56	7.8	49	5.6	62	5.4	60	

* Students who took the paper STAAR with embedded supports version of the test are not included in the reporting category results.



STATE OF TEXAS ASSESSMENTS OF ACADEMIC READINESS
Constructed Responses Summary Report
ENGLISH II
First-Time Tested Students

STATEWIDE

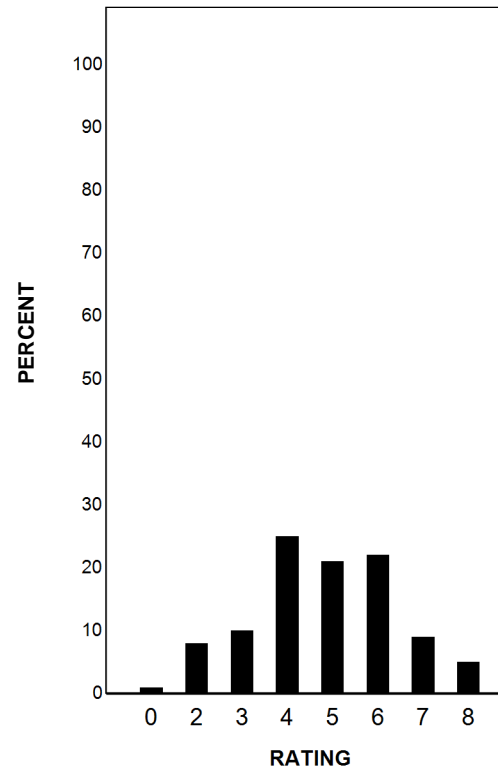
Report Date: SPRING 2017
Date of Testing: SPRING 2017

--- = No Data Reported For Fewer Than Five Students

Written Composition Rating Summary*

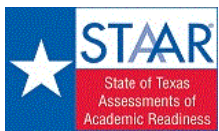
Persuasive Composition

Rating	#	%
0	3067	1
2	28114	8
3	35412	10
4	92175	25
5	76463	21
6	80428	22
7	34861	9
8	18167	5
Total	368687	100



Each composition has been scored independently by two readers. The written composition rating of 0-8 represents the summation of these scores.

* Students who took the Paper STAAR with Embedded Supports version of the test are not included in this report.



STATE OF TEXAS ASSESSMENTS OF ACADEMIC READINESS
Constructed Responses Summary Report
ENGLISH II
Retested Students

STATEWIDE

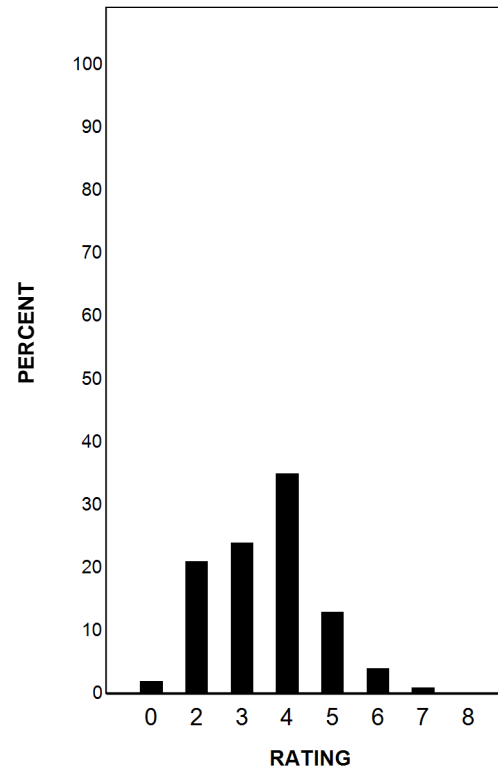
Report Date: SPRING 2017
Date of Testing: SPRING 2017

--- = No Data Reported For Fewer Than Five Students

Written Composition Rating Summary*

Persuasive Composition

Rating	#	%
0	1194	2
2	14255	21
3	15968	24
4	23587	35
5	8711	13
6	2996	4
7	357	1
8	54	0
Total	67122	100



Each composition has been scored independently by two readers. The written composition rating of 0-8 represents the summation of these scores.

* Students who took the Paper STAAR with Embedded Supports version of the test are not included in this report.