

STATE OF TEXAS ASSESSMENTS OF ACADEMIC READINESS

Summary Report

ENGLISH II

All Students

STATEWIDE

Report Date: FALL 2016

Date of Testing: FALL 2016

Administration Summary			Number of Students Tested	Average Scale Score	PASSED		DID NOT PASS		Results for Each Reporting Category*																	
					Level II: Satisfactory	Level III: Advanced	Level I: Unsatisfactory		1				2	3	4	5	6									
Number	Percent							Understanding/ Analysis Across Genres				Understanding/ Analysis of Literary Texts	Understanding/ Analysis of Informational Texts	Composition	Revision	Editing										
Students Tested	104357	94					Short Answer Rating (Single Selection)	Short Answer Rating (Paired Selections)	Multiple Choice	9							9		6		11		11		24	
Legend								Number of Points Possible																		
--- = No Data Reported For Fewer Than Five Students								Number of Points Scored																		
			#	%	#	%	#	%	#	%	#	%	#	%	#	%	#	%	#	%	#	%	#	%		
All Students			104357	3634	37116	36	1035	1	67241	64	3.6	40	3.4	38	3.5	59	4.8	44	5.8	52	11.1	46	6.1	55	6.2	56
Male			62321	3602	20800	33	381	1	41521	67	3.4	38	3.1	34	3.5	58	4.8	44	5.7	51	10.9	46	6.1	55	6.0	55
Female			42029	3680	16313	39	654	2	25716	61	4.0	44	3.8	43	3.6	60	4.9	44	5.9	54	11.4	48	6.0	55	6.4	59
No Information Provided			7	3690	3	43	0	0	4	57	3.4	38	3.0	33	3.9	64	4.6	42	6.3	57	12.0	50	7.0	64	7.0	64
Hispanic/Latino			68671	3622	23934	35	465	1	44737	65	3.6	41	3.4	38	3.5	58	4.7	43	5.7	52	11.0	46	6.0	55	6.2	56
American Indian or Alaska Native			378	3532	99	26	1	0	279	74	3.1	35	3.1	35	3.2	54	4.5	41	5.3	48	10.2	43	5.8	53	5.7	52
Asian			2192	3670	730	33	131	6	1462	67	4.1	45	3.7	42	3.3	56	4.3	39	5.6	51	11.5	48	5.8	52	6.2	57
Black or African American			17272	3578	4998	29	40	0	12274	71	3.5	39	3.1	34	3.5	59	4.6	42	5.5	50	10.9	45	5.8	53	5.8	53
Native Hawaiian or Other Pacific Islander			164	3630	57	35	3	2	107	65	3.5	39	3.4	38	3.4	57	4.8	43	5.6	51	11.6	48	5.9	54	6.0	55
White			14471	3742	6732	47	368	3	7739	53	3.7	41	3.4	38	3.8	64	5.7	52	6.2	56	11.8	49	6.7	61	6.8	61
Two or More Races			1077	3741	487	45	19	2	590	55	3.7	41	3.6	40	3.9	64	5.6	51	6.1	56	11.8	49	6.5	59	6.6	60
No Information Provided			132	3915	79	60	8	6	53	40	4.2	46	3.7	41	4.0	67	5.9	54	7.1	65	13.5	56	7.2	66	7.7	70
Economically Disadvantaged	Yes	74317	3603	24350	33	322	0	49967	67	3.6	40	3.3	37	3.4	57	4.6	42	5.7	51	10.9	45	5.9	54	6.1	55	
	No	29931	3710	12693	42	704	2	17238	58	3.8	42	3.5	39	3.7	62	5.3	48	6.0	55	11.7	49	6.4	58	6.5	59	
	No Information Provided	109	3997	73	67	9	8	36	33	4.3	48	3.9	43	4.2	71	6.4	58	7.5	69	13.9	58	7.6	69	8.2	74	
Title I, Part A	Participants	60691	3619	20617	34	527	1	40074	66	3.6	40	3.4	37	3.5	58	4.7	43	5.7	52	11.0	46	6.0	54	6.1	56	
	Nonparticipants	43557	3653	16428	38	500	1	27129	62	3.7	41	3.4	38	3.6	60	5.0	45	5.8	53	11.3	47	6.2	57	6.3	57	
	No Information Provided	109	4009	71	65	8	7	38	35	4.1	46	3.7	41	4.3	72	6.6	60	7.6	69	13.9	58	7.6	69	8.1	74	
Migrant	Yes	1235	3567	348	28	2	0	887	72	3.5	39	3.3	36	3.3	56	4.3	39	5.4	49	10.7	45	5.7	52	6.0	54	
	No	102975	3634	36691	36	1023	1	66284	64	3.6	40	3.4	38	3.5	59	4.8	44	5.8	52	11.1	46	6.1	55	6.2	56	
	No Information Provided	147	3865	77	52	10	7	70	48	4.0	45	3.4	38	3.8	64	5.9	54	6.9	63	12.9	54	6.8	62	7.4	67	
Limited English Proficient	Current LEP	26423	3459	4809	18	5	0	21614	82	3.2	36	3.0	33	2.9	48	3.8	34	5.0	46	9.7	41	5.2	48	5.4	49	
	Non-LEP (Monitored 1st Year)	1033	3643	386	37	4	0	647	63	3.9	43	3.8	42	3.5	59	4.6	41	5.9	53	11.2	47	6.1	55	6.1	56	
	Non-LEP (Monitored 2nd Year)	1420	3720	652	46	2	0	768	54	4.0	44	4.0	44	3.8	63	5.0	46	6.3	57	11.7	49	6.5	59	6.6	60	
	Other Non-LEP	75356	3693	31191	41	1016	1	44165	59	3.8	42	3.5	39	3.7	62	5.2	47	6.0	55	11.6	48	6.4	58	6.5	59	
	No Information Provided	125	3934	78	62	8	6	47	38	4.1	46	3.6	40	4.2	69	6.3	58	7.3	67	13.3	55	7.5	68	7.8	71	
Bilingual	Participants	99	3837	58	59	2	2	41	41	4.4	49	4.5	49	4.1	68	5.3	48	6.8	61	12.6	52	6.5	59	7.1	64	
	Nonparticipants	104090	3633	36976	36	1025	1	67114	64	3.6	40	3.4	38	3.5	59	4.8	44	5.8	52	11.1	46	6.1	55	6.2	56	
	No Information Provided	168	3786	82	49	8	5	86	51	3.8	42	3.4	38	3.6	60	5.5	50	6.6	60	12.2	51	6.6	60	7.1	64	
ESL	Participants	25420	3457	4588	18	6	0	20832	82	3.2	36	3.0	33	2.9	48	3.8	34	5.0	46	9.7	40	5.2	48	5.4	49	
	Nonparticipants	78777	3691	32448	41	1021	1	46329	59	3.8	42	3.5	39	3.7	62	5.2	47	6.0	55	11.6	48	6.3	58	6.5	59	
	No Information Provided	160	3779	80	50	8	5	80	50	3.8	42	3.3	37	3.6	60	5.5	50	6.6	60	12.2	51	6.6	60	7.1	64	
Special Education	Yes	8173	3427	1349	17	2	0	6824	83	2.8	32	2.5	28	3.0	49	4.1	37	4.9	44	9.5	39	5.4	49	5.1	46	
	No	96066	3651	35692	37	1025	1	60374	63	3.7	41	3.5	38	3.6	60	4.9	44	5.8	53	11.3	47	6.1	56	6.3	57	
	No Information Provided	118	3968	75	64	8	7	43	36	4.2	46	3.6	40	4.2	69	6.3	57	7.3	66	13.7	57	7.4	68	8.0	73	
Gifted/Talented	Participants	1469	4381	1215	83	380	26	254	17	5.5	61	5.5	61	4.9	82	7.8	70	8.4	76	16.0	67	8.3	75	8.9	81	
	Nonparticipants	102762	3623	35822	35	647	1	66940	65	3.6	40	3.4	37	3.5	58	4.8	43	5.7	52	11.1	46	6.0	55	6.2	56	
	No Information Provided	126	3954	79	63	8	6	47	37	4.1	46	3.6	40	4.1	68	6.4	58	7.2	66	13.6	57	7.5	68	7.8	71	
At-Risk	Yes	89491	3587	28097	31	144	0	61394	69	3.5	39	3.2	36	3.4	57	4.6	42	5.6	51	10.8	45	5.9	54	6.0	55	
	No	14763	3917	8950	61	882	6	5813	39	4.4	49	4.2	47	4.2	70	6.1	55	6.9	63	13.1	54	7.1	64	7.4	67	
	No Information Provided	103	3991	69	67	9	9	34	33	4.3	48	3.8	42	4.2	70	6.4	59	7.5	68	13.8	57	7.5	69	8.1	73	
Career/Technical Education	Participants	73056	3635	26233	36	439	1	46823	64	3.7	41	3.4	38	3.6	59	4.8	44	5.8	53	11.2	47	6.1	55	6.2	57	
	Nonparticipants	31189	3630	10817	35	588	2	20372	65	3.6	40	3.3	37	3.5	58	4.8	44	5.7	52	11.1	46	6.0	55	6.1	56	
	No Information Provided	112	3956	66	59	8	7	46	41	4.2	47	3.7	41	4.2	69	6.3	58	7.3	66	13.4	56	7.3	67	7.8	71	

* Students who took the braille version of the test are not included in the reporting category results.



STATE OF TEXAS ASSESSMENTS OF ACADEMIC READINESS

Constructed Responses Summary Report

STATEWIDE

ENGLISH II
All Students

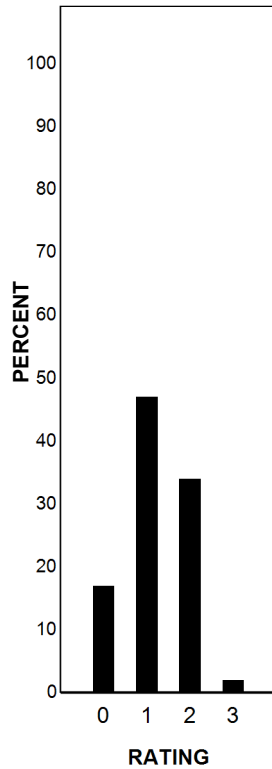
Report Date: FALL 2016
Date of Testing: FALL 2016

--- = No Data Reported For Fewer Than Five Students

Short Answer Rating Summary*

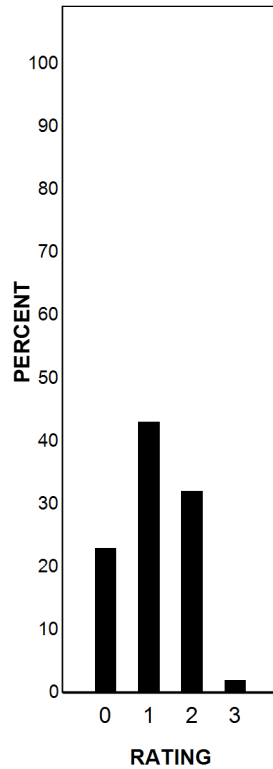
Single Selection

Rating	#	%
0	17596	17
1	49033	47
2	35883	34
3	1838	2
Total	104350	100



Paired Selections

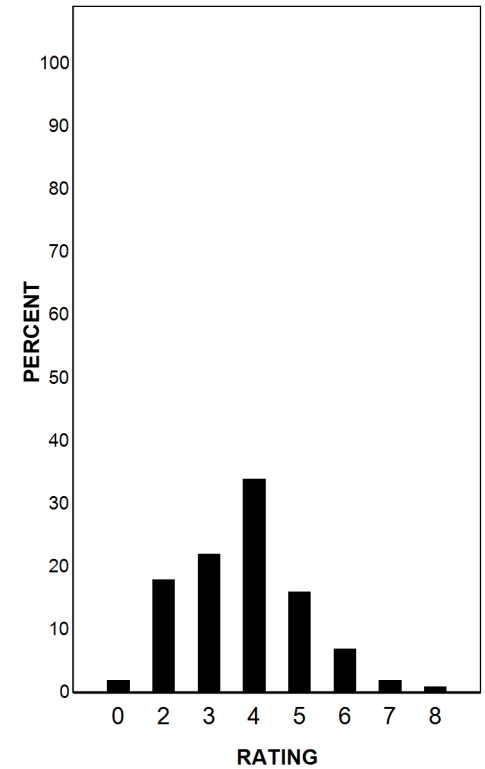
Rating	#	%
0	24003	23
1	44799	43
2	33664	32
3	1884	2
Total	104350	100



Written Composition Rating Summary*

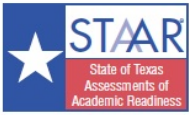
Persuasive Composition

Rating	#	%
0	1830	2
2	18978	18
3	22631	22
4	35097	34
5	16619	16
6	6977	7
7	1671	2
8	547	1
Total	104350	100



Each Composition has been scored independently by two readers. The written composition rating of 0-8 represents the summation of these scores.

* Students who took the braille version of the test are not included in this report.



STATE OF TEXAS ASSESSMENTS OF ACADEMIC READINESS

Summary Report

ENGLISH II

First-Time Tested Students

STATEWIDE

Report Date: FALL 2016

Date of Testing: FALL 2016

Administration Summary			Number of Students Tested	Average Scale Score	PASSED				DID NOT PASS		Results for Each Reporting Category*															
Number	Percent	Level II: Satisfactory			Level III: Advanced	Level I: Unsatisfactory	1						2	3	4	5	6									
Students Tested	12270						94	Understanding/ Analysis Across Genres																		
Students Not Tested					Short Answer Rating (Single Selection)	Short Answer Rating (Paired Selections)	Multiple Choice	Understanding/ Analysis of Literary Texts		Understanding/ Analysis of Informational Texts		Composition	Revision	Editing												
Absent	789	6						Number of Points Possible																		
Other	47	0			9		9		6		11		11		24		11		11							
Total Documents Submitted	13106	100	Number of Points Scored																							
Legend			#	%	#	%	#	%	#	%	#	%	#	%	#	%	#	%	#	%	#	%				
--- = No Data Reported For Fewer Than Five Students																										
All Students			12270	3975	7871	64	1010	8	4399	36	4.5	50	4.4	49	4.3	71	6.3	57	7.1	65	13.3	55	7.2	66	7.6	69
Male			6041	3888	3568	59	363	6	2473	41	4.2	47	3.9	44	4.1	68	6.0	55	6.9	62	12.6	53	7.1	65	7.3	66
Female			6222	4060	4300	69	647	10	1922	31	4.9	54	4.9	54	4.4	74	6.5	59	7.4	67	13.9	58	7.3	67	7.9	72
No Information Provided			7	3690	3	43	0	0	4	57	3.4	38	3.0	33	3.9	64	4.6	42	6.3	57	12.0	50	7.0	64	7.0	64
Hispanic/Latino			8116	3916	4995	62	451	6	3121	38	4.5	50	4.4	49	4.2	69	5.9	54	6.9	63	12.8	54	7.0	64	7.4	68
American Indian or Alaska Native			25	3644	9	36	1	4	16	64	2.6	29	3.2	36	3.5	58	6.0	55	5.7	52	11.3	47	6.4	59	5.7	52
Asian			420	4413	338	80	131	31	82	20	6.0	67	5.8	64	4.8	80	7.3	66	8.3	75	16.4	68	8.2	74	8.7	79
Black or African American			1152	3718	506	44	36	3	646	56	3.7	41	3.4	38	3.7	62	5.4	49	6.1	56	11.7	49	6.4	58	6.4	58
Native Hawaiian or Other Pacific Islander			21	4028	12	57	3	14	9	43	4.1	46	5.0	56	4.5	75	6.6	60	7.5	68	14.3	60	7.1	65	7.7	70
White			2304	4210	1827	79	361	16	477	21	4.9	54	4.7	53	4.8	79	7.6	69	8.1	73	14.8	62	8.1	74	8.5	77
Two or More Races			159	4232	126	79	19	12	33	21	5.0	55	4.9	55	4.7	79	7.7	70	8.2	74	14.9	62	8.2	74	8.4	76
No Information Provided			73	4164	58	79	8	11	15	21	4.7	52	4.3	48	4.6	77	7.1	64	8.1	74	15.4	64	8.1	73	8.9	81
Economically Disadvantaged			7774	3850	4389	56	304	4	3385	44	4.2	47	4.1	46	4.0	67	5.7	52	6.7	61	12.4	52	6.8	62	7.2	65
Yes			4415	4193	3419	77	697	16	996	23	5.1	56	4.9	54	4.7	78	7.3	66	7.9	72	14.8	62	7.9	72	8.4	76
No			81	4120	63	78	9	11	18	22	4.7	52	4.2	47	4.5	75	6.9	63	8.0	73	14.9	62	7.9	72	8.7	79
Title I, Part A			8146	3936	5102	63	514	6	3044	37	4.5	50	4.4	49	4.2	70	6.1	55	7.0	64	13.0	54	7.1	64	7.5	68
Participants			4043	4050	2708	67	488	12	1335	33	4.6	51	4.4	49	4.4	73	6.7	61	7.4	67	13.8	57	7.5	68	7.8	71
Nonparticipants			81	4132	61	75	8	10	20	25	4.6	51	4.0	44	4.5	75	7.0	64	8.0	73	15.0	63	7.9	72	8.7	79
No Information Provided			142	3689	57	40	1	1	85	60	3.8	42	3.8	42	3.9	65	5.1	46	5.8	53	11.4	47	6.3	57	6.2	57
Migrant			12038	3977	7749	64	999	8	4289	36	4.5	50	4.4	49	4.3	71	6.3	57	7.1	65	13.3	55	7.2	66	7.6	69
Yes			90	4107	65	72	10	11	25	28	4.7	52	4.1	45	4.4	74	6.7	61	7.8	71	15.1	63	7.8	71	8.4	76
No			1802	3505	452	25	4	0	1350	75	3.4	37	3.0	34	3.1	51	4.0	36	5.4	49	9.8	41	5.4	49	5.8	52
Limited English Proficient			147	3896	99	67	4	3	48	33	4.9	54	5.0	56	4.1	68	5.3	48	6.8	62	12.9	54	6.8	62	7.4	68
Current LEP			195	3916	128	66	2	1	67	34	4.6	51	4.8	53	4.3	72	5.5	50	7.1	65	12.9	54	7.1	64	7.8	71
Non-LEP (Monitored 1st Year)			10033	4061	7127	71	992	10	2906	29	4.7	53	4.6	52	4.5	75	6.7	61	7.4	68	13.9	58	7.6	69	7.9	72
Non-LEP (Monitored 2nd Year)			93	4040	65	70	8	9	28	30	4.5	49	4.0	44	4.4	73	6.7	61	7.7	70	14.4	60	7.7	70	8.3	75
Other Non-LEP			32	4238	28	88	2	6	4	13	5.4	60	5.8	65	5.2	86	6.8	62	8.2	74	15.1	63	7.8	70	9.1	83
Participants			12139	3974	7779	64	1000	8	4360	36	4.5	50	4.4	49	4.3	71	6.3	57	7.1	65	13.3	55	7.2	66	7.6	69
Nonparticipants			99	3981	64	65	8	8	35	35	4.3	47	3.8	42	4.1	69	6.3	57	7.4	67	13.7	57	7.3	66	8.0	73
No Information Provided			1706	3505	427	25	5	0	1279	75	3.4	37	3.1	34	3.1	51	4.0	36	5.4	49	9.8	41	5.4	49	5.8	52
ESL			10468	4052	7380	71	997	10	3088	29	4.7	52	4.6	51	4.5	74	6.6	60	7.4	67	13.8	58	7.5	68	7.9	72
Participants			96	3970	64	67	8	8	32	33	4.3	47	3.6	40	4.1	69	6.4	58	7.4	67	13.6	57	7.4	67	8.1	74
Nonparticipants			609	3438	135	22	2	0	474	78	2.7	30	2.4	27	3.0	50	4.3	39	5.0	45	9.4	39	5.6	51	5.2	47
Yes			11576	4002	7675	66	1000	9	3901	34	4.6	51	4.5	50	4.3	72	6.4	58	7.2	66	13.5	56	7.3	66	7.7	70
No			85	4096	61	72	8	9	24	28	4.5	50	4.0	44	4.4	73	6.8	61	7.8	70	15.0	62	7.8	70	8.5	77
No Information Provided			924	4728	902	98	376	41	22	2	6.5	72	6.5	72	5.4	91	8.9	81	9.5	86	18.2	76	9.1	83	9.9	90
Gifted/Talented			11255	3912	6904	61	626	6	4351	39	4.4	48	4.2	47	4.2	70	6.1	55	6.9	63	12.9	54	7.1	64	7.4	67
Participants			91	4077	65	71	8	9	26	29	4.5	49	3.9	43	4.4	73	6.8	62	7.7	70	14.7	61	7.8	71	8.3	76
Nonparticipants			7420	3739	3627	49	130	2	3793	51	3.9	43	3.7	41	3.8	64	5.3	48	6.3	57	11.6	48	6.5	59	6.8	61
Yes			4772	4340	4183	88	871	18	589	12	5.6	62	5.5	61	5.0	83	7.7	70	8.4	77	15.8	66	8.3	76	8.9	81
No			78	4122	61	78	9	12	17	22	4.7	53	4.1	45	4.5	75	7.0	63	8.0	73	14.9	62	7.9	72	8.6	79
No Information Provided			7113	3953	4587	64	424	6	2526	36	4.5	50	4.5	49	4.3	71	6.1	56	7.1	64	13.1	55	7.1	65	7.6	69
Career/Technical Education			5080	4003	3228	64	578	11	1852	36	4.5	50	4.3	48	4.2	71	6.5	59	7.2	65	13.5	56	7.3	67	7.6	69
Participants			77	4124	56	73	8	10	21	27	4.7	52	4.0	45	4.5	74	6.9	63	8.0	72	14.8	62	7.9	72	8.5	77
No Information Provided																										

* Students who took the braille version of the test are not included in the reporting category results.



STATE OF TEXAS ASSESSMENTS OF ACADEMIC READINESS

Constructed Responses Summary Report

STATEWIDE

ENGLISH II

First-Time Tested Students

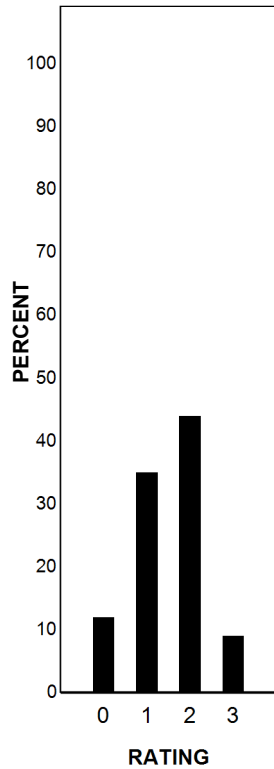
Report Date: FALL 2016
Date of Testing: FALL 2016

--- = No Data Reported For Fewer Than Five Students

Short Answer Rating Summary*

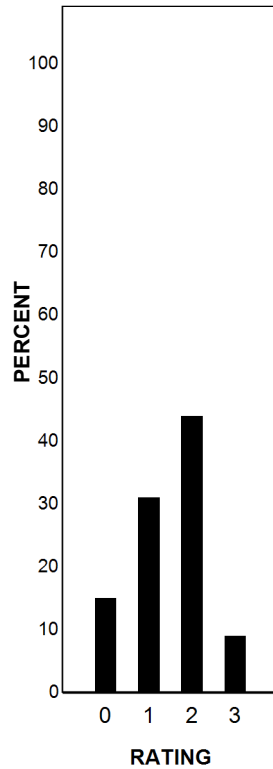
Single Selection

Rating	#	%
0	1426	12
1	4294	35
2	5436	44
3	1111	9
Total	12267	100



Paired Selections

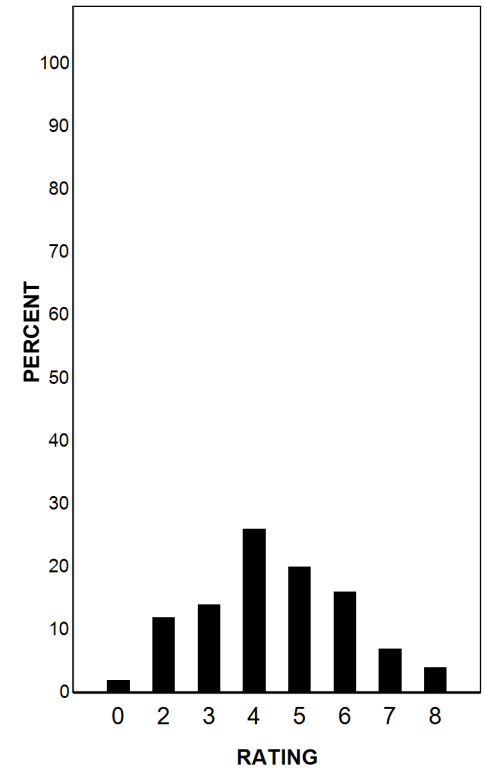
Rating	#	%
0	1889	15
1	3858	31
2	5398	44
3	1122	9
Total	12267	100



Written Composition Rating Summary*

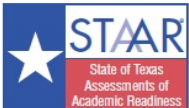
Persuasive Composition

Rating	#	%
0	249	2
2	1488	12
3	1661	14
4	3156	26
5	2400	20
6	1978	16
7	891	7
8	444	4
Total	12267	100



Each Composition has been scored independently by two readers. The written composition rating of 0-8 represents the summation of these scores.

* Students who took the braille version of the test are not included in this report.



STATE OF TEXAS ASSESSMENTS OF ACADEMIC READINESS

Summary Report

ENGLISH II

Retested Students

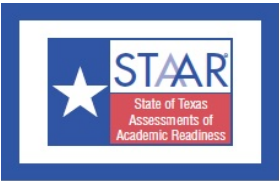
STATEWIDE

Report Date: FALL 2016

Date of Testing: FALL 2016

Administration Summary			Number of Students Tested	Average Scale Score	PASSED				DID NOT PASS		Results for Each Reporting Category*																
Number	Percent	Level II: Satisfactory			Level III: Advanced	Level I: Unsatisfactory	1		2		3		4		5		6										
Students Tested	92087						95	Understanding/ Analysis Across Genres				Understanding/ Analysis of Literary Texts		Understanding/ Analysis of Informational Texts		Composition		Revision		Editing							
Students Not Tested					Short Answer Rating (Single Selection)	Short Answer Rating (Paired Selections)	Multiple Choice	Number of Points Possible		Number of Points Scored		9		9		6		11		11		24		11		11	
Absent	4802	5						#	%	#	%	#	%	#	%	#	%	#	%	#	%	#	%	#	%	#	%
Other	480	0																									
Total Documents Submitted	97369	100																									
Legend																											
--- = No Data Reported For Fewer Than Five Students																											
All Students	92087	3588	29245	32	25	0	62842	68	3.5	39	3.3	36	3.4	57	4.6	42	5.6	51	10.8	45	5.9	54	6.0	55			
Male	56280	3572	17232	31	18	0	39048	69	3.3	37	3.0	33	3.4	56	4.7	42	5.5	50	10.8	45	6.0	54	5.9	54			
Female	35807	3615	12013	34	7	0	23794	66	3.8	42	3.7	41	3.5	58	4.6	42	5.7	51	11.0	46	5.8	53	6.2	56			
No Information Provided	0	--	--	--	--	0	--	--	--	--	--	--	--	--	--	--	--	--	--	--	--	--	--	--			
Hispanic/Latino	60555	3583	18939	31	14	0	41616	69	3.5	39	3.3	37	3.4	56	4.5	41	5.6	51	10.8	45	5.9	53	6.0	55			
American Indian or Alaska Native	353	3524	90	25	0	0	263	75	3.2	35	3.1	35	3.2	53	4.4	40	5.3	48	10.1	42	5.7	52	5.7	52			
Asian	1772	3494	392	22	0	0	1380	78	3.6	40	3.2	36	3.0	50	3.6	33	4.9	45	10.3	43	5.2	47	5.6	51			
Black or African American	16120	3568	4492	28	4	0	11628	72	3.5	38	3.0	34	3.5	59	4.6	42	5.5	50	10.8	45	5.8	53	5.8	53			
Native Hawaiian or Other Pacific Islander	143	3572	45	31	0	0	98	69	3.4	38	3.2	35	3.3	55	4.5	41	5.4	49	11.2	47	5.8	52	5.8	52			
White	12167	3653	4905	40	7	0	7262	60	3.5	38	3.2	35	3.7	61	5.4	49	5.8	53	11.3	47	6.4	58	6.4	58			
Two or More Races	918	3656	361	39	0	0	557	61	3.5	39	3.4	38	3.7	62	5.3	48	5.8	53	11.3	47	6.3	57	6.3	58			
No Information Provided	59	3607	21	36	0	0	38	64	3.5	39	3.0	33	3.3	55	4.4	40	5.9	54	11.2	47	6.2	56	6.2	57			
Economically Disadvantaged	Yes	66543	3574	19961	30	18	0	46582	70	3.5	39	3.2	36	3.4	56	4.5	41	5.5	50	10.7	45	5.8	53	5.9	54		
No Information Provided	No	25516	3626	9274	36	7	0	16242	64	3.6	40	3.3	36	3.5	59	4.9	45	5.7	52	11.2	47	6.2	56	6.2	56		
Title I, Part A	Participants	52545	3570	15515	30	13	0	37030	70	3.5	39	3.2	36	3.4	56	4.5	41	5.5	50	10.7	45	5.8	53	5.9	54		
No Information Provided	Nonparticipants	39514	3613	13720	35	12	0	25794	65	3.6	40	3.3	37	3.5	58	4.8	44	5.7	51	11.0	46	6.1	55	6.1	56		
Migrant	Yes	1093	3551	291	27	1	0	802	73	3.5	39	3.2	36	3.3	54	4.2	38	5.4	49	10.6	44	5.6	51	6.0	54		
No Information Provided	No	90937	3589	28942	32	24	0	61995	68	3.5	39	3.3	36	3.4	57	4.6	42	5.6	51	10.9	45	5.9	54	6.0	55		
Limited English Proficient	Current LEP	24621	3456	4357	18	1	0	20264	82	3.2	36	3.0	33	2.9	48	3.8	34	5.0	46	9.7	41	5.2	48	5.4	49		
No Information Provided	Non-LEP (Monitored 1st Year)	886	3602	287	32	0	0	599	68	3.7	41	3.6	40	3.4	57	4.4	40	5.7	52	11.0	46	6.0	54	5.9	54		
No Information Provided	Non-LEP (Monitored 2nd Year)	1225	3688	524	43	0	0	701	57	3.9	43	3.9	43	3.7	62	4.9	45	6.2	56	11.6	48	6.4	58	6.4	59		
No Information Provided	Other Non-LEP	65323	3636	24064	37	24	0	41259	63	3.6	40	3.3	37	3.6	61	5.0	45	5.8	53	11.3	47	6.2	56	6.2	57		
Bilingual	Participants	67	3645	30	45	0	0	37	55	3.9	44	3.8	42	3.5	58	4.6	42	6.1	55	11.4	47	5.9	53	6.1	55		
No Information Provided	Nonparticipants	91951	3588	29197	32	25	0	62754	68	3.5	39	3.2	36	3.4	57	4.6	42	5.6	51	10.9	45	5.9	54	6.0	55		
ESL	Participants	23714	3454	4161	18	1	0	19553	82	3.2	36	3.0	33	2.9	48	3.7	34	5.0	46	9.7	40	5.2	47	5.4	49		
No Information Provided	Nonparticipants	68309	3635	25068	37	24	0	43241	63	3.6	40	3.3	37	3.6	60	4.9	45	5.8	53	11.2	47	6.2	56	6.2	57		
Special Education	Yes	7564	3426	1214	16	0	0	6350	84	2.9	32	2.5	28	3.0	49	4.1	37	4.9	44	9.5	39	5.4	49	5.1	46		
No Information Provided	No	84490	3603	28017	33	25	0	56473	67	3.6	40	3.3	37	3.5	58	4.7	43	5.6	51	11.0	46	6.0	54	6.1	55		
Gifted/Talented	Participants	545	3792	313	57	4	1	232	43	3.9	43	3.8	43	4.1	68	5.8	52	6.6	60	12.2	51	6.8	62	7.2	66		
No Information Provided	Nonparticipants	91507	3587	28918	32	21	0	62589	68	3.5	39	3.2	36	3.4	57	4.6	42	5.6	51	10.8	45	5.9	54	6.0	55		
At-Risk	Yes	82071	3573	24470	30	14	0	57601	70	3.5	39	3.2	36	3.4	56	4.5	41	5.5	50	10.7	45	5.8	53	5.9	54		
No Information Provided	No	9991	3715	4767	48	11	0	5224	52	3.9	43	3.6	40	3.9	64	5.3	48	6.2	56	11.8	49	6.5	59	6.6	60		
Career/Technical Education	Participants	65943	3601	21646	33	15	0	44297	67	3.6	40	3.3	37	3.5	58	4.7	42	5.6	51	11.0	46	6.0	54	6.1	55		
No Information Provided	Nonparticipants	26109	3558	7589	29	10	0	18520	71	3.4	38	3.1	35	3.3	55	4.5	41	5.4	50	10.6	44	5.8	53	5.9	53		
	No Information Provided	35	3585	10	29	0	0	25	71	3.2	35	3.0	33	3.5	58	5.0	46	5.9	53	10.4	43	6.1	55	6.1	55		

* Students who took the braille version of the test are not included in the reporting category results.



STATE OF TEXAS ASSESSMENTS OF ACADEMIC READINESS
Constructed Responses Summary Report
ENGLISH II
Retested Students

STATEWIDE

Report Date: FALL 2016
 Date of Testing: FALL 2016

--- = No Data Reported For Fewer Than Five Students

Short Answer Rating Summary*

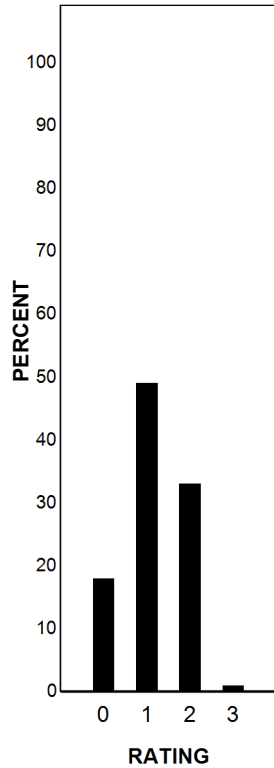
Written Composition Rating Summary*

Single Selection

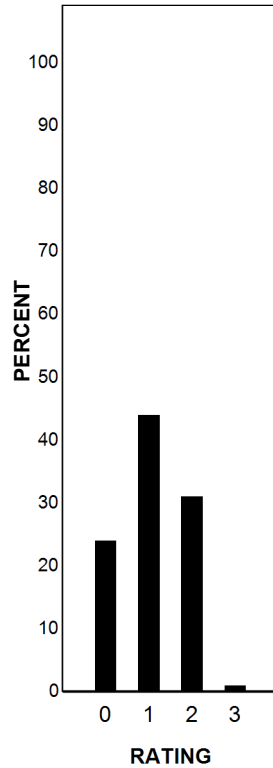
Paired Selections

Persuasive Composition

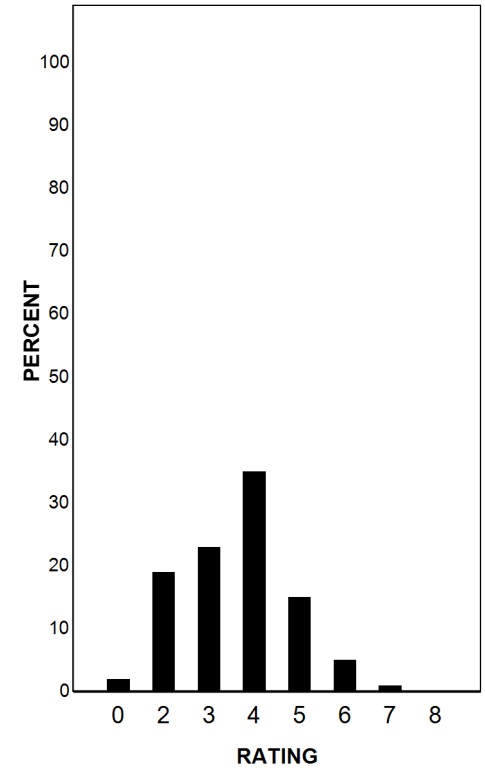
Rating	#	%
0	16170	18
1	44739	49
2	30447	33
3	727	1
Total	92083	100



Rating	#	%
0	22114	24
1	40941	44
2	28266	31
3	762	1
Total	92083	100



Rating	#	%
0	1581	2
2	17490	19
3	20970	23
4	31941	35
5	14219	15
6	4999	5
7	780	1
8	103	0
Total	92083	100



Each Composition has been scored independently by two readers. The written composition rating of 0-8 represents the summation of these scores.

* Students who took the braille version of the test are not included in this report.