





**STATE OF TEXAS ASSESSMENTS OF ACADEMIC READINESS**  
**Constructed Responses Summary Report**  
**ENGLISH I**  
**All Students**

STATEWIDE

Report Date: FALL 2016  
 Date of Testing: FALL 2016

--- = No Data Reported For Fewer Than Five Students

**Short Answer Rating Summary\***

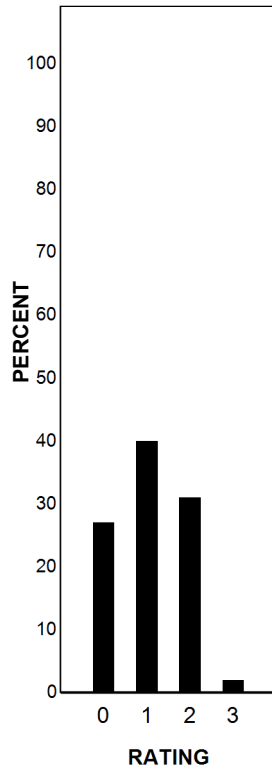
**Written Composition Rating Summary\***

**Single Selection**

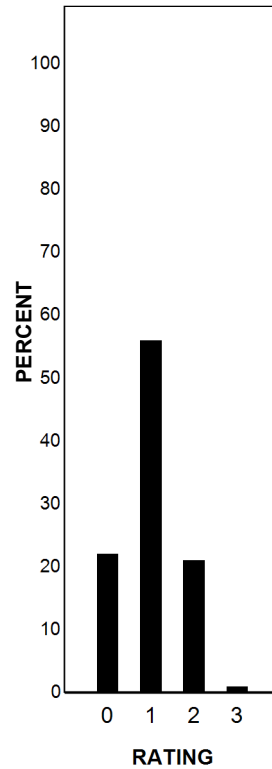
**Paired Selections**

**Expository Composition**

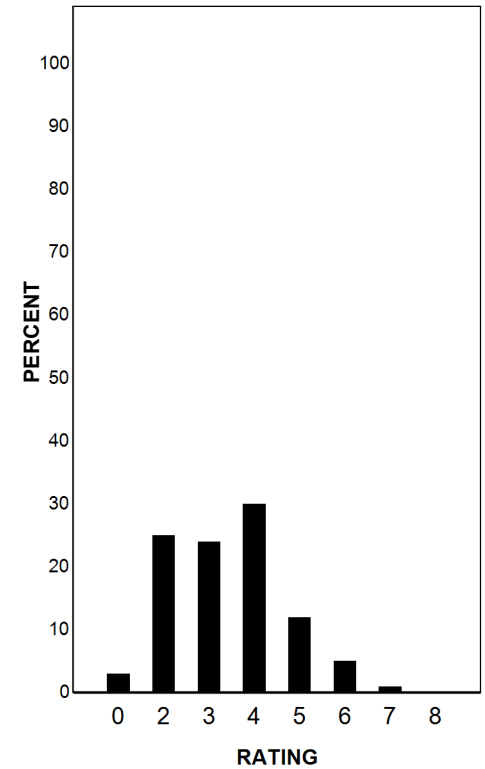
Rating	#	%
0	33622	27
1	51190	40
2	39755	31
3	1975	2
Total	126542	100



Rating	#	%
0	27671	22
1	70717	56
2	26771	21
3	1383	1
Total	126542	100



Rating	#	%
0	4291	3
2	31031	25
3	29954	24
4	37986	30
5	15717	12
6	5918	5
7	1284	1
8	361	0
Total	126542	100



Each Composition has been scored independently by two readers. The written composition rating of 0-8 represents the summation of these scores.

\* Students who took the braille version of the test are not included in this report.





**STATE OF TEXAS ASSESSMENTS OF ACADEMIC READINESS**  
*Constructed Responses Summary Report*  
**ENGLISH I**  
**First-Time Tested Students**

STATEWIDE

Report Date: FALL 2016  
 Date of Testing: FALL 2016

--- = No Data Reported For Fewer Than Five Students

**Short Answer Rating Summary\***

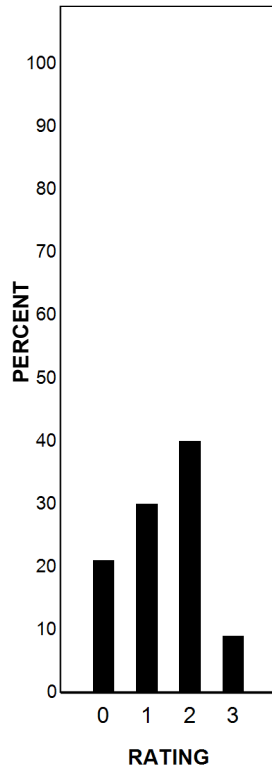
**Written Composition Rating Summary\***

**Single Selection**

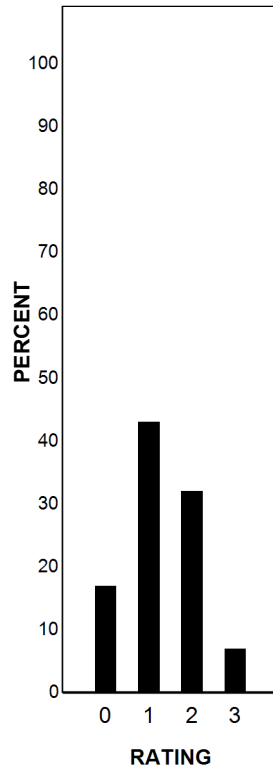
**Paired Selections**

**Expository Composition**

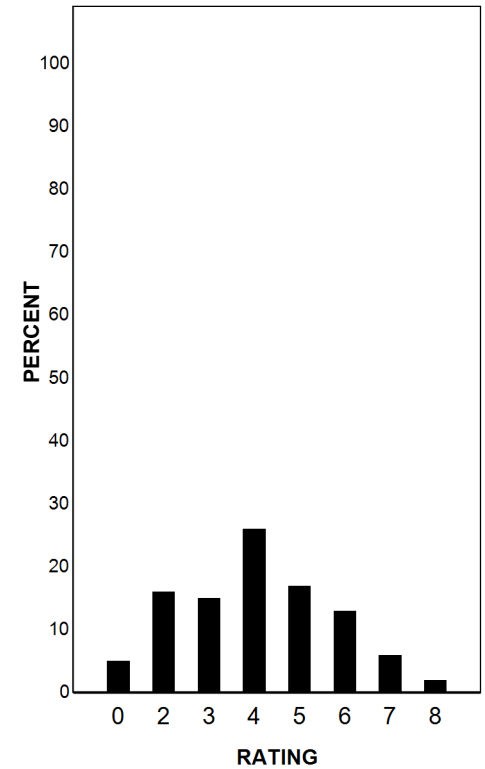
Rating	#	%
0	2471	21
1	3471	30
2	4663	40
3	1046	9
Total	11651	100



Rating	#	%
0	2024	17
1	5009	43
2	3762	32
3	856	7
Total	11651	100



Rating	#	%
0	533	5
2	1916	16
3	1756	15
4	2976	26
5	2030	17
6	1491	13
7	671	6
8	278	2
Total	11651	100



Each Composition has been scored independently by two readers. The written composition rating of 0-8 represents the summation of these scores.

\* Students who took the braille version of the test are not included in this report.





**STATE OF TEXAS ASSESSMENTS OF ACADEMIC READINESS**  
*Constructed Responses Summary Report*  
**ENGLISH I**  
**Retested Students**

STATEWIDE

Report Date: FALL 2016  
 Date of Testing: FALL 2016

--- = No Data Reported For Fewer Than Five Students

**Short Answer Rating Summary\***

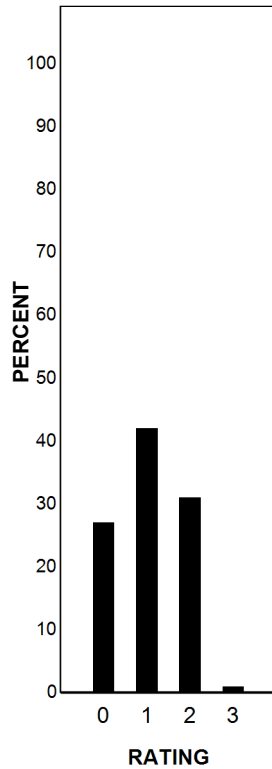
**Written Composition Rating Summary\***

**Single Selection**

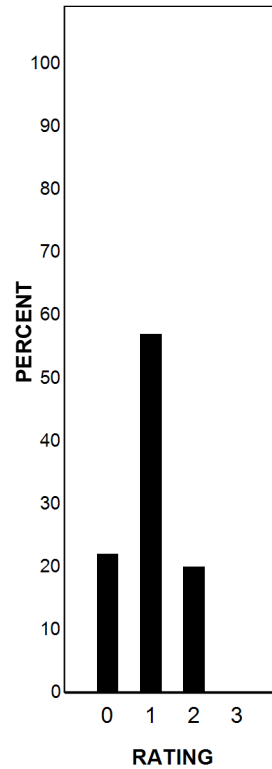
**Paired Selections**

**Expository Composition**

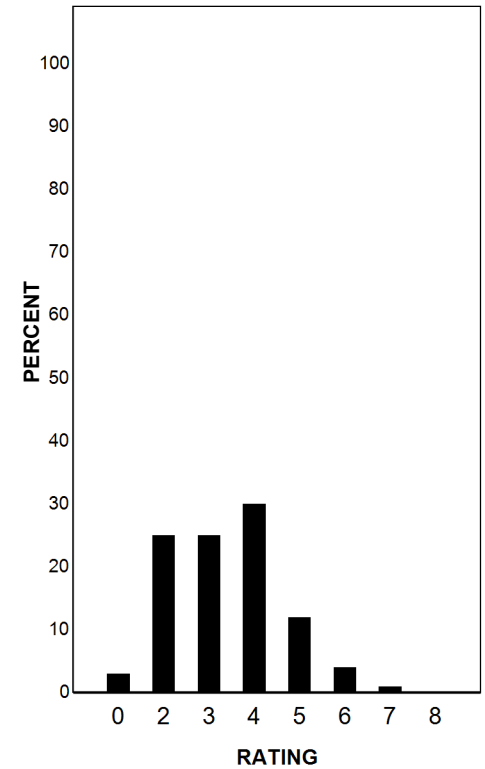
Rating	#	%
0	31151	27
1	47719	42
2	35092	31
3	929	1
Total	114891	100



Rating	#	%
0	25647	22
1	65708	57
2	23009	20
3	527	0
Total	114891	100



Rating	#	%
0	3758	3
2	29115	25
3	28198	25
4	35010	30
5	13687	12
6	4427	4
7	613	1
8	83	0
Total	114891	100



Each Composition has been scored independently by two readers. The written composition rating of 0-8 represents the summation of these scores.

\* Students who took the braille version of the test are not included in this report.