

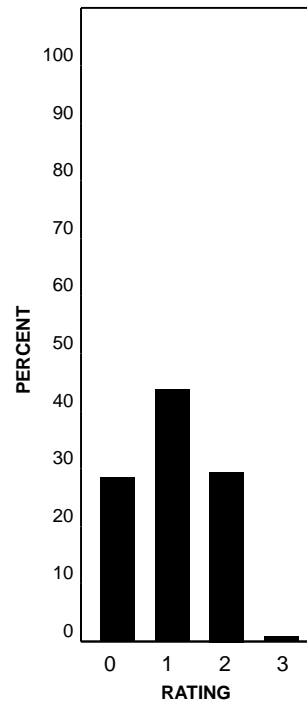


--- = No Data Reported For Fewer Than Five Students

**Short Answer Rating Summary\***

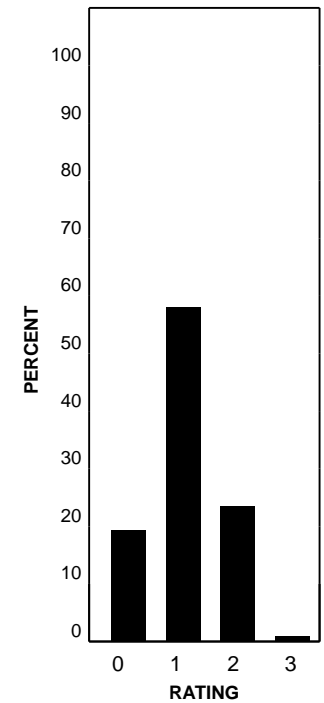
**Single Selection**

Rating	#	%
0	23974	28
1	37024	43
2	24770	29
3	693	1
<b>Total</b>	<b>86461</b>	<b>100</b>



**Paired Selections**

Rating	#	%
0	16347	19
1	49396	57
2	20025	23
3	693	1
<b>Total</b>	<b>86461</b>	<b>100</b>



\* Students who took the braille version of the test are not included in this report.

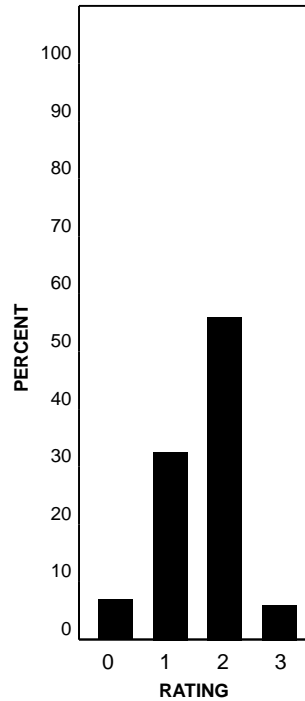


--- = No Data Reported For Fewer Than Five Students

**Short Answer Rating Summary**

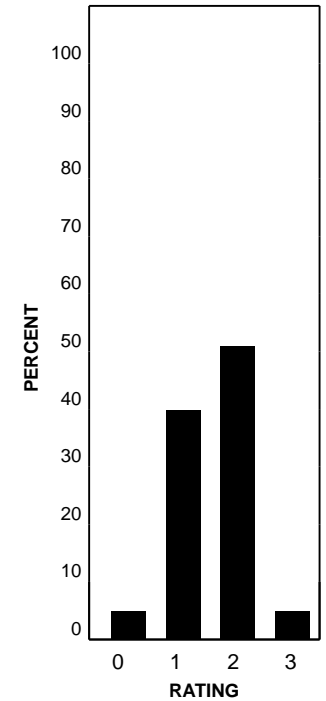
**Single Selection**

Rating	#	%
0	436	7
1	1902	32
2	3301	55
3	370	6
<b>Total</b>	<b>6009</b>	<b>100</b>



**Paired Selections**

Rating	#	%
0	329	5
1	2355	39
2	3019	50
3	306	5
<b>Total</b>	<b>6009</b>	<b>100</b>



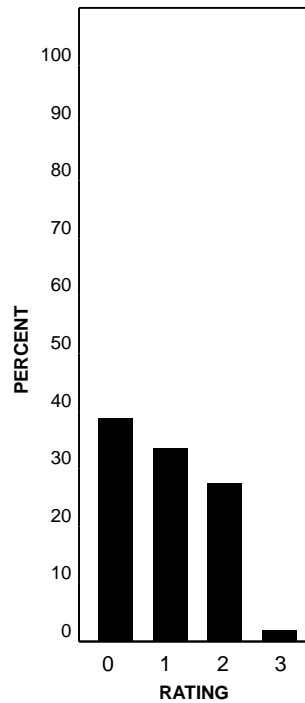


--- = No Data Reported For Fewer Than Five Students

**Short Answer Rating Summary**

**Single Selection**

Rating	#	%
0	50	38
1	43	33
2	36	27
3	2	2
<b>Total</b>	<b>131</b>	<b>100</b>



**Paired Selections**

Rating	#	%
0	54	41
1	52	40
2	25	19
3	0	0
<b>Total</b>	<b>131</b>	<b>100</b>

