

SPPI 11 Calculation

Total number of children whose evaluations were completed within 60 days
(or State-established timeline*)

Divided by

Number of children for whom parental consent to evaluate was received

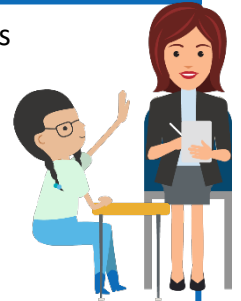
Multiplied by

100

Account for children included in (a), but not included in (b). Indicate the range of days beyond the timeline when the evaluation was completed and any reasons for the delays.

*Texas established timeline found in [Texas Education Code §89.1011](#)

(Data reported in the TSDS Child Find Collection)



SPPI 11 Calculation Example

a. # of children for whom parental consent to evaluate was received		100
b. Total # of children whose evaluations were completed within 60 days (or State-established timeline)		96
b.1. # determined not eligible and whose evaluations and eligibility determinations were completed within 90 days (or State-established timeline)	8	
b.2. # determined eligible and whose evaluations and eligibility determinations were completed within 90 days (or State-established timeline)	88	

Percent Completed Within Timeline Calculation

$$\begin{aligned}
 \text{Percentage} &= [(b.1. + b.2.) / a] \times 100 \\
 &= [(8 + 88) / 100] \times 100 \\
 &= (96 / 100) \times 100 \\
 &= .96 \times 100 \\
 &= 96\%
 \end{aligned}$$

