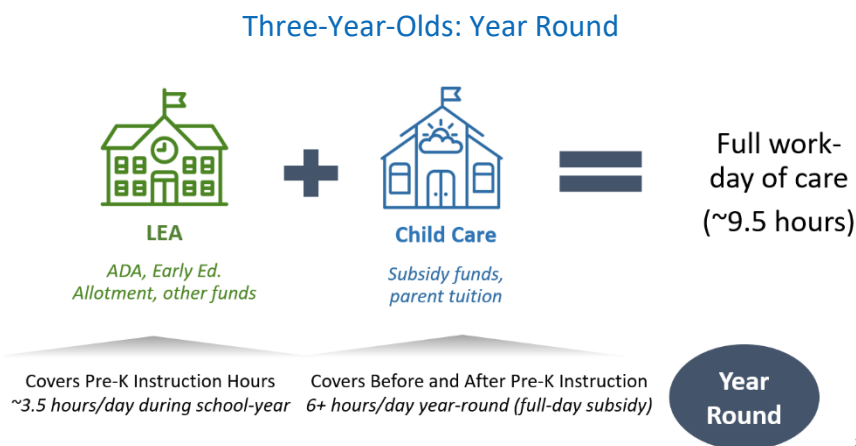


Public-Private Pre-k Partnership Funding Scenarios

PK3 Funding for an extended day partnership classroom:

Local Education Agencies (LEAs) may contribute all or a portion of Average Daily Attendance (ADA) funds, Early Education Allotment funds and other local funds to provide a half-day or full-day prekindergarten program for dually enrolled three-year-olds.

- PK eligible three-year-olds generate half-day ADA Funds from Foundation School Program (FSP) Funds Early Learning Programs (ELPs) may contribute Child Care Subsidy (CCS) and/or parent tuition to provide a half-day or full-day prekindergarten program for dually enrolled three-year-olds.
- PK eligible three-year-olds draw full-day rate CCS to cover costs for providing care before and after the hours of Pre-k instruction (approximately 9.5 hours per day)



PK4 Funding for an extended day partnership classroom:

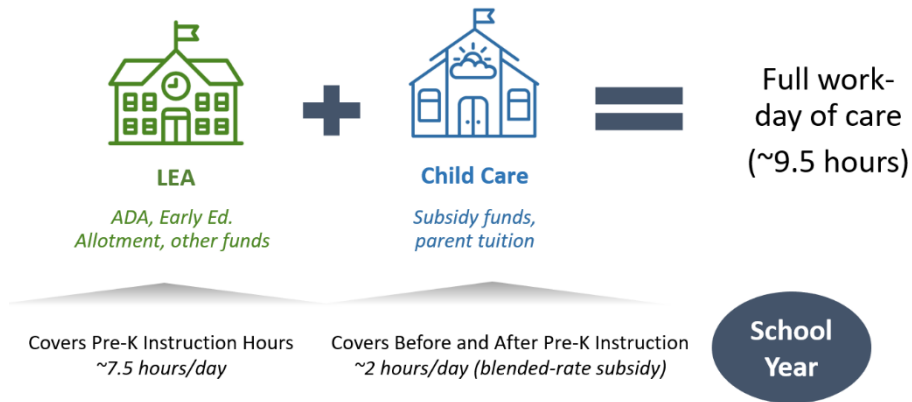
Local Education Agencies (LEAs) may contribute all or a portion of Average Daily Attendance (ADA) funds, Early Education Allotment funds and other local funds to provide the required full-day prekindergarten program for dually enrolled four-year-olds.

- PK eligible four-year-olds generate half-day ADA funds from Foundation School Program (FSP) Funds
- LEAs may use Early Ed. Allotment or other local funds to provide the remaining half of the full-day prekindergarten program

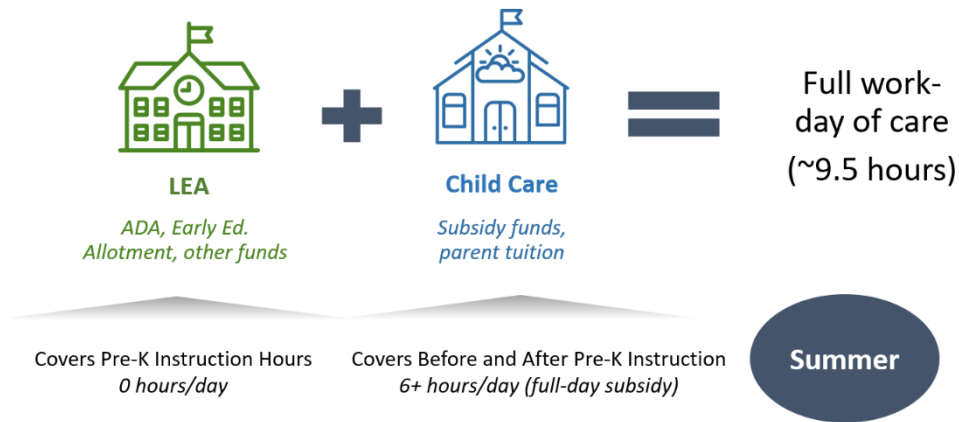
Early Learning Programs (ELPs) may contribute Child Care Subsidy (CCS) and/or parent tuition to provide a full-day prekindergarten program for eligible four-year-olds.

- PK eligible four-year-olds generate partial/blended rate CCS to cover costs for providing care before and after the hours of Pre-K instruction (approximately 9.5 hours per day)
- Partial/Blended rate amount varies between the school year and summer months

Four-Year-Olds: School Year



Four-Year-Olds: Summer



Potential Funding Sources:

Average Daily Allotment funds from Foundation School Program Funds (FSP)

- Average amount for half-day ADA statewide generated by an eligible three or four year old is ***\$4,181.00/year**
- ADA amount varies by district

*TPEIR report 2019-2020

TWC Child Care Subsidy funds

- TWC Child Care Subsidy rates vary. CCS rates are based on the age of the child receiving care, the number of hours of care provided and the quality rating of the ELP.
- LEAs and ELPs can contact their Local Workforce Board to request information about CCS rates.

Resources:

Average Pre School Childcare Costs In Texas

<https://tootris.com/edu/blog/parents/child-care-in-texas-can-cost-up-to-10000/>

The Texas Public Education Information Resource (TPEIR): This website provides reports and data on Texas educational topics and trends.

<https://www.texaseducationinfo.org/>

TPEIR-Prekindergarten Programs: Texas public school prekindergarten programs information including the number of school districts and schools offering full-day and half-day programs as well as student enrollment. Additionally, this report provides enrollment by prekindergarten funding sources and high-level financial information.

<https://www.texaseducationinfo.org/Home/Topic/Prekindergarten%20Programs?br=PK-12>

TWC Pre-k Partnership Overview Page:

<https://davidmc.shinyapps.io/prek-partnership-app/>

Statewide Pre-k Partnership Calculator: This tool can support child care centers to determine potential costs and revenues for classrooms in a partnership with a school district or charter school to provide high quality prekindergarten for eligible 3 or 4 year-old children

<https://davidmc.shinyapps.io/prek-partnership-app/>

Video: How to use the Statewide Pre-k Partnership Calculator

<https://www.youtube.com/watch?v=OvmzpO3GgIU>