

Title I, Part D Subpart 2 PR2000

A photograph of a school staircase with several students walking up and down. The students are wearing backpacks and casual clothing. The staircase has metal railings and is set within a modern building with large windows. The text 'ESSA Compliance Reports' is overlaid in the center of the image.

ESSA Compliance Reports



2022-2023 ESSA Compliance Report Timeline

	Available	Due Date
Gun Free Schools Reports – District and Campus	May 3, 2023	June 29, 2023
ESSA Consolidated Compliance Reports	July 28, 2023	September 29, 2023



Federal Program Compliance Division

Title I, Part D PR2000

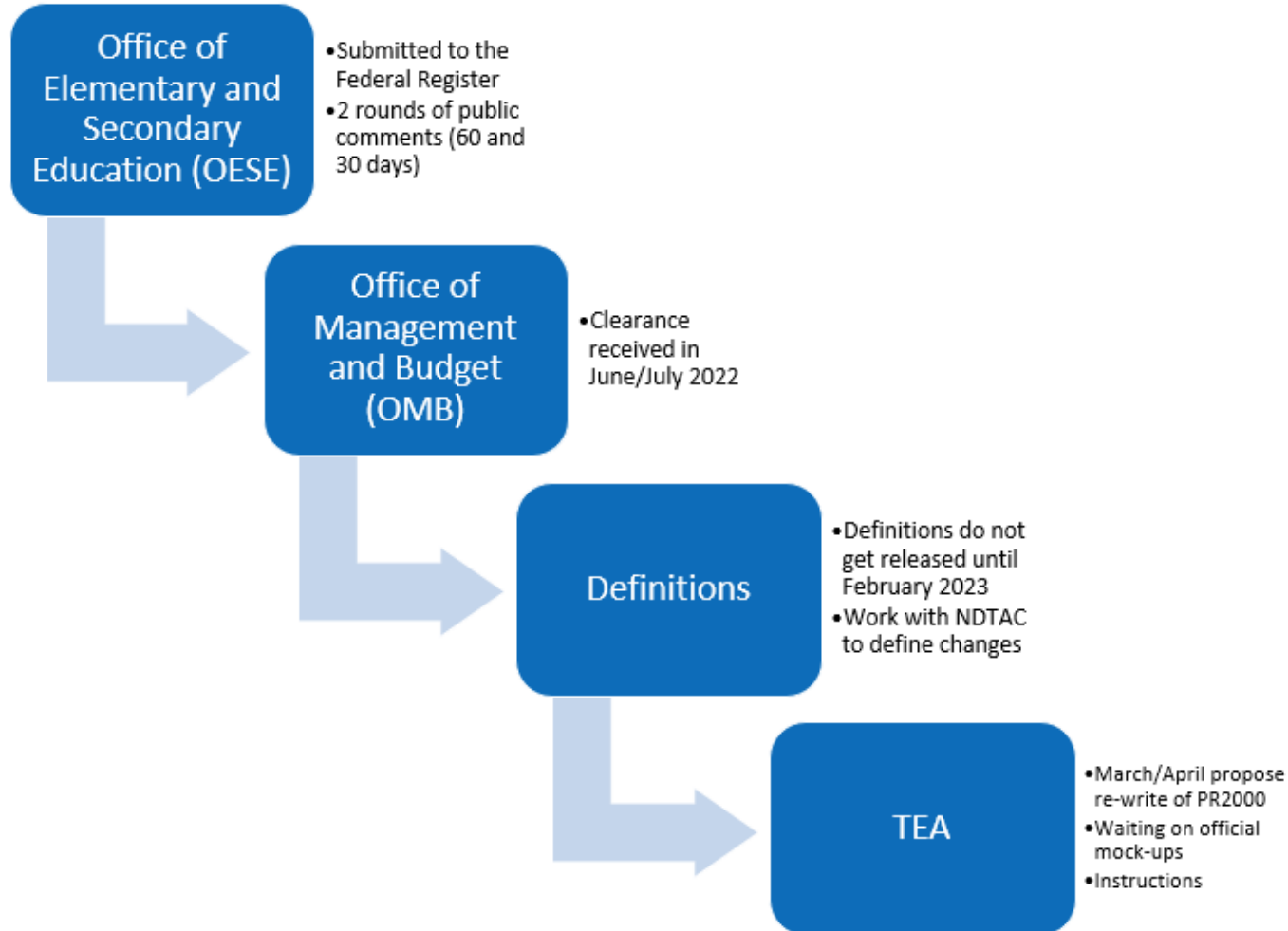


Title I, Part D – PR2000

2021-2022 Program Compliance Self-Check Review

Program Compliance Self-Check Not In Compliance	Number of Requirements	Number of LEAs (96)	Percentage
Overall		2	2.1%
A – Program Coordination/Integration – Subpart 2	2	1	1.0%
B – Use of Funds – Subpart 1	6	0	0%
C – Use of Funds – Subpart 2	3	1	1.0%

How we got here

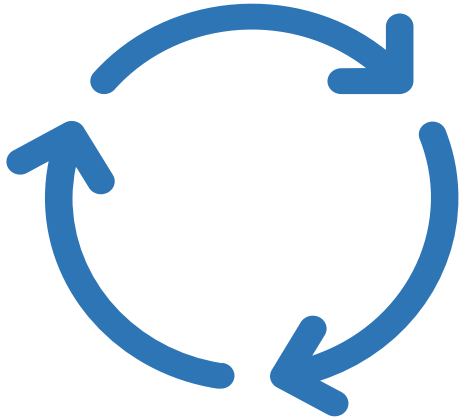


The U.S. Department of Education alongside the Office of Management and Budget have worked on a packet for data collection covering years 22-23, 23-24 and 24-25.

In this packet we see the inclusion of different facility programs:

- Adult Correctional Institutions
- Community Day Programs
- Juvenile Detention Centers
- Shelters
- Group Homes
- Ranch/wilderness Camps
- Residential Treatment Centers
- Long-Term Secure Juvenile Facilities
- Other

Title I, Part D – PR2000 2022-2023 Additions/Changes



	Addition	Change
Part 1: LEA Program/Facility Type		
Part 2: Student Participation		
Part 3: Program and Exit Outcomes		
Part 4: Academic Achievement and Proficiency		
Part 5: Program Compliance Self-Check	NA	NA

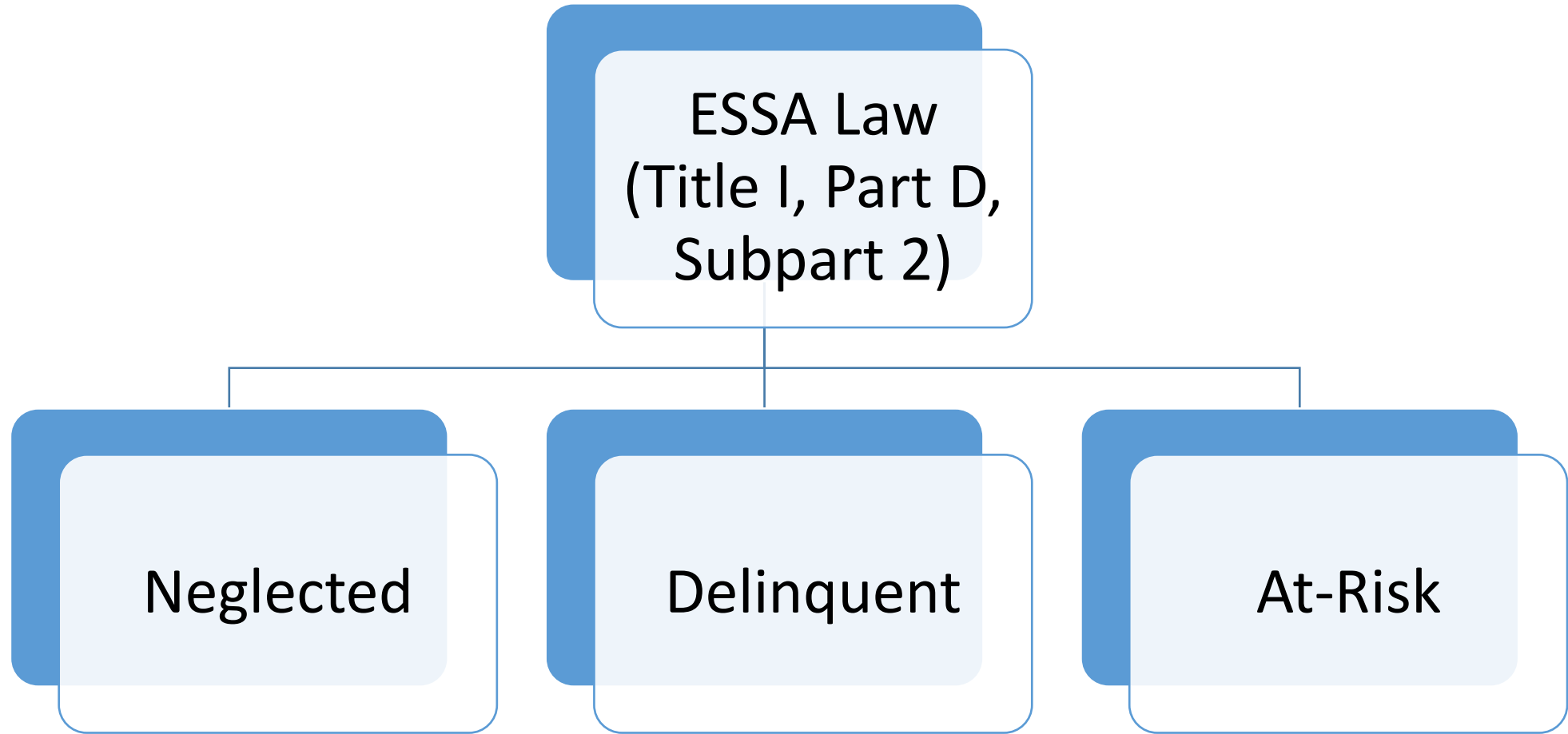
Complete Rewrite



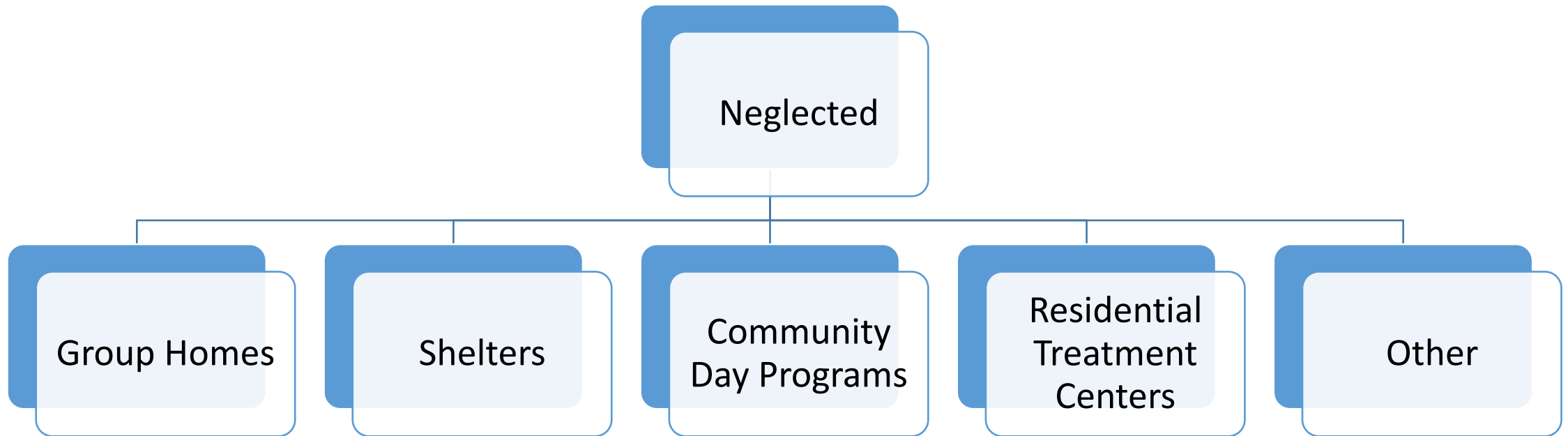
Title I, Part D – PR2000 2022-2023 Additions/Changes

	Program	Facility Type
Program/Facility Types	Neglected Programs (Subpart 1 only)	<ul style="list-style-type: none"> • Group Homes • Shelters • Community Day Programs • Residential Treatment Centers • Other
	Delinquent Programs (Subpart 1 or Subpart 2)	<ul style="list-style-type: none"> • Adult Corrections • Community Day Programs • Juvenile Detention Centers • Shelters • Group Homes • Ranch/Wilderness Camps • Residential Treatment Centers • Long-term Secure Juvenile Facilities • Other
	At-Risk (Subpart 2 only)	<ul style="list-style-type: none"> • At-Risk

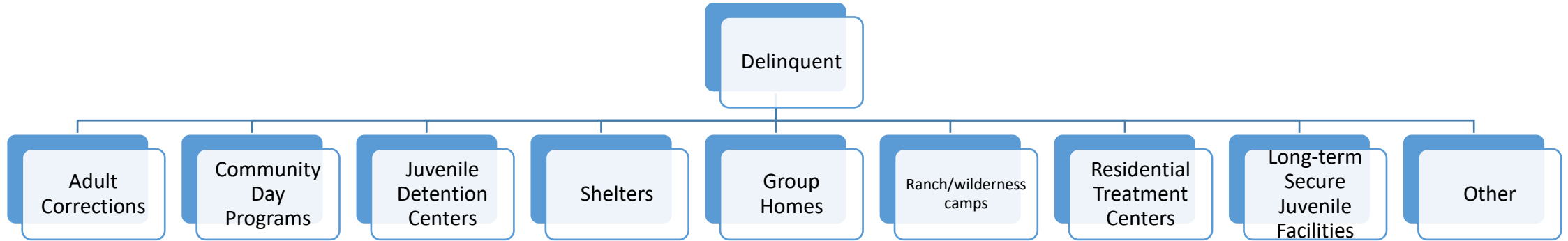
Breaking it down



Neglected (Subpart 1 only)



Delinquent (Subpart 1 and Subpart 2)



Please note!



- The law has not changed.
- Under the Title I, Part D, Subpart 2 program, you still need to meet the definition of Neglected or Delinquent.
- What is new is Facility programs data as is reported on the PR2000.
- Please check the Definitions two pager resource available.

ED Requested Data

This document contains instructions for building files to submit ED*Facts* data groups:

New! Table 1.0-1: ED*Facts* data groups

Data Group Name	DG	Definition
Delinquent programs participation table - LEA	872	The number of students participating in programs for delinquent students under Title I, Part D, Subpart 2 (LEA) of ESEA, as amended.
At-Risk programs participation table - LEA	873	The number of students participating in programs for at-risk students under Title I, Part D, Subpart 2 (LEA) of ESEA, as amended.

The data collected using this file specification are collected under the authority of the Elementary and Secondary Education Act (ESEA) of 1965, as amended by the Every Student Succeeds Act (ESSA).

The ED data stewarding office/s for this file: OESE/SSA/Title I, Part D

Delinquent Programs

Facility Type	Definition
ADULT CORRECTIONAL INSTITUTIONS	An adult correctional institution is a facility in which persons, including persons 21 and under, are confined as a result of conviction for a criminal offense.
COMMUNITY DAY PROGRAMS	The term “community day program” means a regular program of instruction provided at a community day school operated specifically for neglected or delinquent children and youth.
GROUP HOMES	A group home is a long-term facility in which residents are allowed extensive contact with the community, such as attending school or holding a job. Includes halfway houses.

Delinquent Programs



Facility Type	Definition
JUVENILE DETENTION CENTERS	A juvenile detention center is a shorter-term institution that provides care to children who require secure custody pending court adjudication, court disposition, or execution of a court order, or care to children after commitment.
LONG-TERM SECURE JUVENILE FACILITIES	A long-term secure facility is a public or private residential facility that provides confinement of its residents, for the care of children who have been adjudicated to be delinquent or in need of supervision
RANCH/WILDERNESS CAMPS	A ranch/wilderness camp is a long-term residential facility for persons whose behavior does not necessitate the strict confinement of a long-term secure facility, often allowing them greater contact with the community. Includes ranches, forestry camps, wilderness or marine programs, or farms.

Delinquent Programs

Facility Type	Definition
RESIDENTIAL TREATMENT CENTERS	A residential treatment center is a facility that focuses on providing some type of individually planned treatment program for youth (substance abuse, sex offender, mental health, etc.) in conjunction with residential care. The USDE notes that it is unlikely that most treatment centers will meet the definition of an institution for delinquent children and youth.
OTHER PROGRAMS	Any other programs, not defined above, which receive Title I, Part D funds and serve neglected or delinquent children and youth.

Resource available:

Title I, Part D, Subpart 2 - Definitions



Definitions

This document should be used in coordination with other documentation posted in the [Title I, Part D, TEA Webpage](#). The U.S. Department of Education (USDE) has released, via technical guide, the definitions of the types of facilities that will be recognized moving forward.

The following definitions of the Title I, Part D Subpart 2 program types still apply:

TERM	DEFINITION
CHILDREN AND YOUTH	Means the same as "children" as that term is defined in § 200.103(a), [CFR 200.90(a)].
ADULT CORRECTIONAL INSTITUTION	Refers to a facility in which persons (including persons under 21 years of age) are confined as a result of a conviction for a criminal offense. [ESEA Section 1432(1)].
INSTITUTION FOR DELINQUENT CHILDREN AND YOUTH	Refers to a public or private residential facility for the care of children and youth who have been adjudicated to be delinquent or in need of supervision. [ESEA section 1432(4)(B)].
LOCALLY OPERATED CORRECTIONAL FACILITY	Refers to a facility in which persons are confined as a result of a conviction for a criminal offense, including persons under 21 years of age. The term also includes a local public or private institution and community day program or school not operated by the State that serves delinquent children and youth. [34 CFR 200.90(c)].
AT-RISK	The term "at-risk," when used with respect to a child, youth, or student, means a school-aged individual who is at risk of academic failure, dependency adjudication, or delinquency adjudication, has a drug or alcohol problem, is pregnant or is a parent, has come into contact with the juvenile justice system or child welfare system in the past, is at least 1 year behind the expected grade level for the age of the individual, is an English learner, is a gang member, has dropped out of school in the past, or has a high absenteeism rate at school. [ESEA Section 1432(2)].

V 1.0 (5/2023) Copyright © 2023, Texas Education Agency. All Rights Reserved.

- Two Pager resource available!
- Housed in the Statewide Title I Capacity Building website.
- <https://www.esc20.net/apps/pages/statewide-essa-title-i-part-d>



Title I, Part D – PR2000 2022-2023 Additions/Changes

	By LEA Program/Facility Type
Part 1: LEA Program/Facility Type	<ul style="list-style-type: none">• Number of Programs/Facilities• Average Number of Days Served• Average Length of Stay
Part 2: Student Participation	<ul style="list-style-type: none">• Gender• Race/Ethnicity• Age• Student Groups<ul style="list-style-type: none">• Students with Disabilities (IDEA)• English Learners (ELs)• Long-Term

Title I, Part D – PR2000

2022-2023 Additions/Changes

Part 1: LEA Program/Facility Type

LEA Program/Facility Type			
LEA Program/Facility Type	Number of Programs/Facilities	Average Number of Days Served	Average Length of Stay (days)
Neglected Programs (Subpart 1 only)			
1. Group Homes			
2. Shelters			
3. Community Day Programs			
4. Residential Treatment Centers			
5. Other			
Total			
Delinquent Programs (Subpart 1 or Subpart 2)			
1. Adult Corrections			
2. Community Day Programs			
3. Juvenile Detention Centers			
4. Shelters			
5. Group Homes			
6. Ranch/wilderness camps			
7. Residential Treatment Centers			
8. Long-term secure juvenile facilities			
9. Other			
Total			
At-Risk (Subpart 2 only)			
At Risk			

Average number of days students received Program-funded Services from the facility

Title I, Part D – PR2000

2022-2023 Additions/Changes

Part 2: Student Participation											
A. Gender and Race/Ethnicity											
Counts are the number of unique students who benefited from the Title I, Part D funding. Count students only once, even if they were admitted to the same facility or program multiple times.											
Type of Program	Gender			Race/Ethnicity							
Neglected Programs (Subpart 1 only)											
LEA Program/Facility Type	Male	Female	Total	Hispanic/Latino	American Indian or Alaska Native	Asian	Black or African-American	Native Hawaiian or Other	White	Two or More Races	Total
1. Group Homes											
2. Shelters											
3. Community Day Programs											
4. Residential Treatment Centers											
5. Other											
Delinquent Programs (Subpart 1 or Subpart 2)											
1. Adult Corrections											
2. Community Day Programs											
3. Juvenile Detention Centers											
4. Shelters											
5. Group Homes											
6. Ranch/wilderness camps											
7. Residential Treatment Centers											
8. Long-term secure juvenile facilities											
9. Other											
At-Risk (Subpart 2 only)											
At-Risk											
Totals											
Total											

Title I, Part D – PR2000

2022-2023 Additions/Changes

A. Gender and Race/Ethnicity											
Counts are the number of unique students who benefited from the Title I, Part D funding. Count students only once, even if they were admitted to the same facility or program multiple times.											
Type of Program	Gender			Race/Ethnicity							
Neglected Programs (Subpart 1 only)											
LEA Program/Facility Type	Male	Female	Total	Hispanic/ Latino	American Indian or Alaska Native	Asian	Black or African- American	Native Hawaiian or Other	White	Two or More Races	Total
1. Group Homes											
2. Shelters											
3. Community Day Programs											
4. Residential Treatment Centers											
5. Other											

Title I, Part D – PR2000

2022-2023 Additions/Changes

Delinquent Programs (Subpart 1 or Subpart 2)											
1. Adult Corrections											
2. Community Day Programs											
3. Juvenile Detention Centers											
4. Shelters											
5. Group Homes											
6. Ranch/wilderness camps											
7. Residential Treatment Centers											
8. Long-term secure juvenile facilities											
9. Other											
At-Risk (Subpart 2 only)											
At-Risk											
Totals											
Total											

Title I, Part D – PR2000 2022-2023 Additions/Changes

Part 2: Student Participation (Continued)

B. Age																		
Counts are the number of unique students who benefited from the Title I, Part D funding. Count students only once, Even if they were admitted to the same facility or program multiple times.																		
Neglected Programs (Subpart 1 only)	3-5	6	7	8	9	10	11	12	13	14	15	16	17	18	19	20	21	Total
1. Group Homes																		
2. Shelters																		
3. Community Day Programs																		
4. Residential Treatment Centers																		
5. Other																		
Delinquent Programs (Subpart 1 or Subpart 2)																		
1. Adult Corrections																		
2. Community Day Programs																		
3. Juvenile Detention Centers																		
4. Shelters																		
5. Group Homes																		
6. Ranch/wilderness camps																		
7. Residential Treatment Centers																		
8. Long-term secure juvenile facilities																		
9. Other																		
At-Risk (Subpart 2 only)																		
At-Risk																		
Totals																		
Total																		

Title I, Part D – PR2000

2022-2023 Additions/Changes

B. Age																		
Counts are the number of unique students who benefited from the Title I, Part D funding. Count students only once, Even if they were admitted to the same facility or program multiple times.																		
Neglected Programs (Subpart 1 only)	3-5	6	7	8	9	10	11	12	13	14	15	16	17	18	19	20	21	Total
1. Group Homes																		
2. Shelters																		
3. Community Day Programs																		
4. Residential Treatment Centers																		
5. Other																		

Title I, Part D – PR2000

2022-2023 Additions/Changes

Delinquent Programs (Subpart 1 or Subpart 2)															
1. Adult Corrections															
2. Community Day Programs															
3. Juvenile Detention Centers															
4. Shelters															
5. Group Homes															
6. Ranch/wilderness camps															
7. Residential Treatment Centers															
8. Long-term secure juvenile facilities															
9. Other															
At-Risk (Subpart 2 only)															
At-Risk															
Totals															
Total															

Title I, Part D – PR2000 2022-2023 Additions/Changes

Part 2: Student Participation (Continued)

C. Student Groups			
Students may be categorized as both having a disability and being English Learners (ELs), if both apply. Please place wherever appropriate.			
Neglected Programs (Subpart 1 only)	Students with Disabilities (IDEA)	English Learners (ELs)	Long Term
1. Group Homes			
2. Shelters			
3. Community Day Programs			
4. Residential Treatment Centers			
5. Other			
Delinquent Programs (Subpart 1 or Subpart 2)			
1. Adult Corrections			
2. Community Day Programs			
3. Juvenile Detention Centers			
4. Shelters			
5. Group Homes			
6. Ranch/wilderness camps			
7. Residential Treatment Centers			
8. Long-term secure juvenile facilities			
9. Other			
At-Risk (Subpart 2 only)			
At-Risk			





Title I, Part D – PR2000 2022-2023 Additions/Changes

	By Program Neglected, Delinquent and At-Risk (Subpart 1 and Subpart 2)
Part 3: Program and Exit Outcomes	<ul style="list-style-type: none">• Number of Students enrolled in district within 90 days after exit• Number of Students attain academic and career and technical outcomes while enrolled in the program<ul style="list-style-type: none">• Enrolled in Program (In Facility)• 90 Days after exit
Part 4: Academic Achievement and Proficiency	<ul style="list-style-type: none">• Academic Achievement of Long-Term Students<ul style="list-style-type: none">• Reading• Math• Students who showed from initial to follow-up assessment<ul style="list-style-type: none">• Improvement of up to one full grade• Improvement of more than one full grade• Negative grade level• No change• Assessment Proficiency (OPTIONAL)<ul style="list-style-type: none">• Attained Proficiency• Not Proficient

Title I, Part D – PR2000

2022-2023 Additions/Changes

Part 3: Program and Exit Outcomes

Program and Exit Outcomes				
Once per student only after exit	Neglected and Delinquent Programs (Subpart 1)		At-Risk and Delinquent Programs (Subpart 2)	
1. Number of students who enrolled in their local district school within 90 days after exit.				
Outcomes				
Number of students who attain academic and career and technical outcomes while enrolled in the program.	Enrolled in Program (In Facility)	90 Days after Exit	Enrolled in Program (In Facility)	90 Days after Exit
1. Earned a HSED				
2. Obtained high school diploma				
3. Earned high school course credits				
4. Enrolled in HSED program				
5. Accepted and/or enrolled in post-secondary education				
6. Enrolled in job training courses/programs				
7. Obtained Employment				

Title I, Part D – PR2000 2022-2023 Additions/Changes

Part 4: Academic Achievement and Proficiency

A. Achievement of Long Term Students				
Number of the Students who showed	Reading		Math	
	Neglected and Delinquent Programs (Subpart 1)	At-Risk and Delinquent Programs (Subpart 2)	Neglected and Delinquent Programs (Subpart 1)	At-Risk and Delinquent Programs (Subpart 2)
1. Improvement of up to one full grade level from the initial to follow-up assessment				
2. Improvement of more than one full grade level from the initial to follow-up assessment				
3. A negative grade level change from the initial to follow-up assessment				
4. No change from the initial to follow-up assessment				
B. Assessment Proficiency (OPTIONAL)				
Attained Proficiency				
Not Proficient				

Title I, Part D – PR2000 2022-2023 Program Compliance Self-Check

Program Compliance Self-Check	Number of Requirements
A – Program Coordination/Integration – Subpart 2	2
B – Use of Funds – Subpart 1	6
C – Use of Funds – Subpart 2	3



Revised! What if the data cannot be disaggregated between Delinquent programs and At-Risk programs?

If data cannot be disaggregated between delinquent programs and at-risk programs, data will still need to be reported.

Revised! May one LEA subgrant under Title I, Part D, Subpart 2 support multiple programs for facilities? If so, should each of those programs be reported?

Yes, each program or facility that receives funding from a subgrantee LEA should be reported.

Revised! What if my data cannot be disaggregated by all of the specified categories of delinquent programs or facilities?

Report data by category to the extent you are able to. The definitions for each program or facility type allow for some flexibility of interpretation. If you do not have any programs or facilities that fall into a specific category, do not report for that category. You should report all programs. Each program or facility should be reported under the program or facility type that is most applicable, and all programs or facilities should be reported once so that the total adds up to the total number of programs or facilities serving delinquent students funded by Title I, Part D, Subpart 2 in your State.

Are programs funded by Title I, Part A reported in this file?

No. Do not report programs funded solely through Title I, Part A.

What is the definition for Residential Treatment Center? A residential treatment center is a facility that focuses on providing some type of individually planned treatment program for youth (substance abuse, sex offender, mental health, etc.) in conjunction with residential care. The Department notes that it is unlikely that most treatment centers will meet the definition of an institution for delinquent children and youth.

What is the difference between Subpart 1 and Subpart 2? Subpart 1 grants are made to State Agencies while Subpart 2 grants are made to LEAs. Due to their scope of service, SAs programs may look drastically different in contrast to the LEAs. For the purpose of PR2000, follow Subpart 2 guidance.

What is the definition of at risk as it pertains to the PR2000? The term “at-risk”, when used with respect to a child, youth, or student, means a school aged individual who is at-risk of academic failure, dependency adjudication, or delinquency adjudication, has a drug or alcohol problem, is pregnant or is a parent, has come into contact with the juvenile justice system or child welfare system in the past, is at least 1 year behind the expected grade level for the age of the individual, is an English learner, is a gang member, has dropped out of school in the past, or has a high absenteeism rate at school.

Part 3, Program Exit and Outcomes: 90 days after exit: How is the student tracked that returns to a district other than their home LEA? Is it the responsibility of the facility, the LEA, both, or LEA only? It depends. Typically, when a youth goes to a different LEA that is not the home LEA, there will be a record request of some type. At that point, the request may come to the LEA or the facility or in cases both. The fiscal agent receiving Title I, Part D Subpart 2 funds, is the one held responsible for providing the data for the PR2000. However, the LEA may have established other internal controls that may differ.

Part 4 Academic Achievement and Proficiency: Assessment Proficiency (Optional) – what does that mean? Does the LEA decide if they will report this information?

Correct. The guidance states that this an optional method of tracking progress. The LEA is not mandated to use it as part of their progress tracking system.

Contact Information



Gerardo Ramirez
Program Director, Title I, Part D /
Title II, Part A



Desk Phone Number
(512) 463-9390
Division Phone Number
(512) 463-9499



Email Address
Gerardo.Ramirez@TEA.Texas.gov
Division Email Address
ESSASupport@TEA.Texas.gov