A photograph of a female teacher with short dark hair and glasses, wearing a white t-shirt, sitting on the floor and reading a book to three young students. The students are also sitting on the floor, looking at the book. They are in a classroom with bookshelves in the background. The image is semi-transparent, allowing the text to be overlaid.

The Basics of Serving 3's

Agenda

- **Benefits**
- **Considerations**
- **Funding and Attendance**
- **Prekindergarten Eligibility**
- **PK3 Registration and Enrollment**
- **Questions/Answers**

Objectives

- **Participants will learn:**
 - the benefits and considerations when implementing a prekindergarten three-year-old program
 - how prekindergarten differs among three and four-year-olds
 - eligibility, registration, and enrollment information for three-year-olds

Benefits of Serving Three-Year-Olds

Benefits of PK3 Programs

Increased school
readiness

Increased access to
high quality
prekindergarten

Continuity of care
for children and
families

Increased funding

Opportunities to
partner with
community child
care providers

Program flexibility

Considerations

Considerations in planning for PK3



- What is the landscape for three-year-olds?
- What space is available?
- What program options are available?
- How to engage other local early childhood stakeholders?

Landscape Analysis

<https://www.texaseducationinfo.org/Home/Topic/Prekindergarten%20Programs?br=PK-12>



- What is the landscape for three-year-olds?
- Is there a need to serve three-year-olds?
- How many three-year-olds are in the area?
- How many three-year-olds are not being served?

Landscape- Sample Data using Clint ISD

Public Prekindergarten Enrollment by Full or Half-Day Program and ADA Eligibility for 2020-21 School Year

		2020-21					
		Total Enrolled		ADA Eligible		Not Eligible for ADA	
		Students Enrolled	Percent Enrolled	Students Enrolled	Percent Enrolled	Students Enrolled	Percent Enrolled
Age 4	Full-day	0	0.00%	0	0.00%	0	0.00%
	Half-day	359	100.00%	330	100.00%	29	100.00%
Total	Total	359	100.00%	330	100.00%	29	100.00%

Sample Calculation:

$636 - 330 = 306$ estimated
eligible PK students not
served

Public Prekindergarten (PK) Enrollment All Ages and First Grade Enrollment

	School Year				
	2016-17	2017-18	2018-19	2019-20	2020-21
	Number of Students	Number of Students	Number of Students	Number of Students	Number of Students
Prekindergarten Enrollment All Ages	548	641	590	592	359
Prekindergarten Membership	548	641	590	592	359
Prekindergarten Enrollment Age 4	548	*	590	592	359
First Grade Enrollment All Students	778	723	700	722	682
First Grade Enrollment PK Eligible Student Programs	713	652	650	673	636

Notes: 1. Prekindergarten Enrollment is the number of students of all ages enrolled in public prekindergarten. 2. For this report, Prekindergarten Membership is defined as the number of public prekindergarten enrollees of all ages who are served by a district for at least 2 hours per day. 3. First Grade Enrollment PK Eligible Student Programs is the number of first grade students who are either economically disadvantaged, Emergent Bilingual/English learner (EB/EL), in foster care, homeless or are military children.

Program Options

PK-3

- Full-Day
- Full-Day - PreK Partnership
- District Supported
- Tuition Supported
- Half-Day
- Lottery Enrollment
- Enrollment Wait List

PK-4

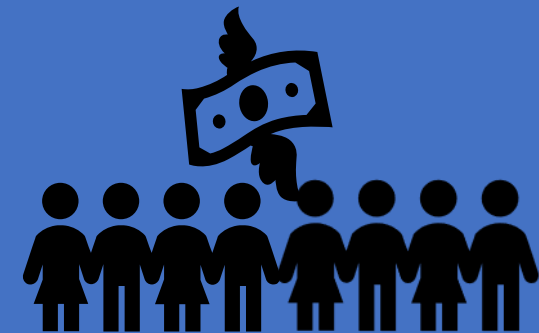
- Full-Day (HB3 requirement)
- Full-Day - Pre-K Partnership
- District Supported
- Tuition Supported

Funding & Attendance

Pre-K 3 Funding Model



LEAs receive half-day ADA funds for enrolled, eligible three-year olds.



Attendance

PK-3

- Once enrolled in prekindergarten, a child must attend school
- All students are subject to compulsory school attendance rules while they are enrolled in school

PK-4

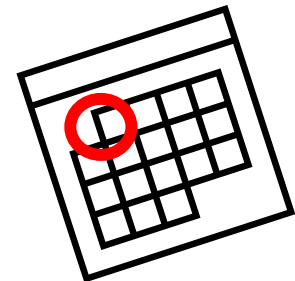
- Once enrolled in prekindergarten, a child must attend school
- All students are subject to compulsory school attendance rules while they are enrolled in school

Prekindergarten Eligibility

Who is eligible to attend prekindergarten? (TEC), §29.153

To be eligible for enrollment in a free prekindergarten class, a child:

- must be at least three years of age on or before September 1 of the current school year (if a 3-year-old program is available) or four years of age on or before September 1 of the current school year
- AND meet at least one of the eligibility requirements



Additional Eligibility Requirements

A child is eligible if the child meets the age requirements and is:

- unable to speak or understand English
- homeless
- a child of an active-member of the armed forces of the United States of America
- a child of a member of the armed forces of the US who was injured or killed while serving on active duty
- or has been in the conservatorship of the Dept. of Family and Protective Services
- educationally disadvantaged (qualify for free or reduced lunch)
- a child of a first responder who is eligible to receive the Star of Texas Award



TEC §29.153 (b)

More Notes on Eligibility

- Three- and four-year old students who are not potty-trained or who have frequent bathroom accidents may not be excluded from eligibility.
- Once a student is determined to be eligible for pre-k, the student remains eligible for the remainder of the current school year in the district in which he or she resides or is otherwise entitled to attend for Foundation School Program benefits.



PK3 Registration and Enrollment

Planning for PK3 Enrollment

What program
model will be
used?

What enrollment
process will be
used?

What registration
procedure will be
used?



What program model will be used?

Free Prekindergarten Model

Serves eligible three-year-olds

LEA receives ½ day ADA funds

Children must meet eligibility

Blended Model

Serves eligible and ineligible three-year-olds

LEA receives ½ day ADA funds for eligible children only

LEA uses tuition-supported or district funds for ineligible students

District/ Tuition-Supported Model

Serves ineligible three-year-olds

LEA does not receive ADA funds

LEA can determine criteria

Other program options to consider

Half-Day

- Serves a greater number of children
- Receives half-day ADA funds
- One teacher can serve two classes

Full-Day

- May require a partnership to provide full-day
- Receives half-day ADA funds
- LEA would fund other half-day or charge tuition

What enrollment process will be used?

First
come,
first
served

- Accept all applications
- Contact families of status
- Create and monitor waiting list

Lottery

- LEAs determine system for lottery process
- Contact families of status
- Create and monitor waiting list

- Establishing an entry and enrollment process for PK3 is a local decision
- TEA does not mandate nor recommend a particular approach

Additional Notes for Enrollment

- A district must verify a student's eligibility for free pre-k in order to receive funding for that student.
- Obtain proof that the student enrolling is three- or four-years-old as of September 1 of the current school year.
- Consult the Student Attendance Accounting Handbook Section 7.3 Enrollment Procedures
- Districts must have the verification document for eligibility as well as any other required documentation on file for their records.

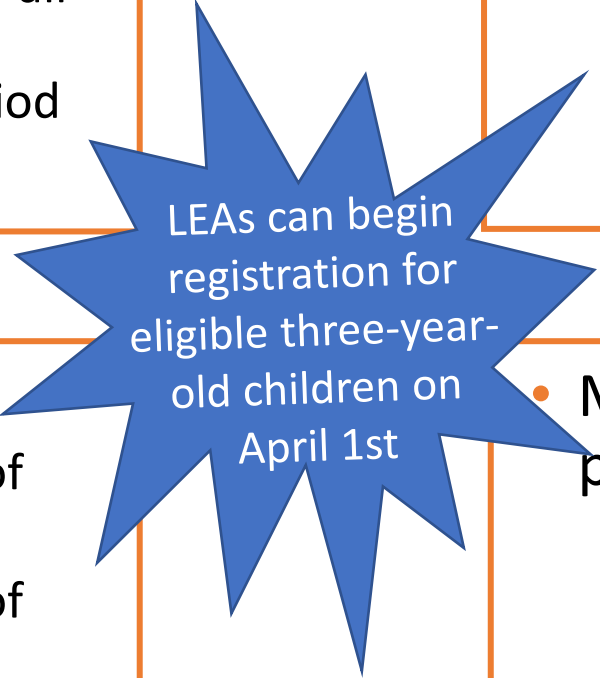
Registration and Waiting List Considerations

- **Waiting list management**

- Will the waiting list be managed at a campus level or centrally for all PK3 classes?
- What will the registration period be?

- **Waiting list order**

- Will parents know where they are on the waiting list?
- How long are children kept on the waiting list?



LEAs can begin
registration for
eligible three-year-
old children on
April 1st

- **Communication**

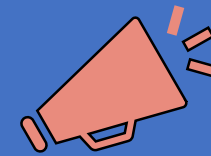
- How will parents be notified of registration?
- How will parents be notified of acceptance?

- **Make the process as painless as possible for**

- Families
- Staff

How will families be notified about PK3 Registration?

- Each school district shall develop a system to notify the population in the district with children who are eligible for enrollment in a prekindergarten class under this section of the availability of the class. The system must include public notices issued in English and Spanish. TEC29.153(e)



Spread the Word!

- Press release to local print and news media outlets
- LEA website notice
- Signage displayed at campuses
- Signage at local partnering child care provider sites
- Neighborhood walk
- Social media platforms

Public-Private Partnership Resources

- **Early Learning Partnerships Page (new updates, visit for the most current information):**
- <https://tea.texas.gov/academics/early-childhood-education/early-learning-public-private-partnerships>
- **Public-Private Prekindergarten Partnership Overview One-Pager:**
<https://tea.texas.gov/sites/default/files/prek-partnership-one-pager.pdf>
- **Public-Private Prekindergarten Partnership Benefits One-Pager:**
<https://tea.texas.gov/sites/default/files/partnership-benefits-one-pager.pdf>
- **Public-Private Partnership Funding Guidance:**
<https://tea.texas.gov/sites/default/files/public-private-prekindergarten-partnership-funding.pdf>
- **Developing the Partnership Contract Agreement/MOU:**
<https://tea.texas.gov/sites/default/files/developing-partnership-agreement-mou.pdf>



Questions/Answers

Frequently Asked Questions

1. Can you serve three and four-year olds in the same classroom?

- Yes, both three-year-olds and four-year-olds may be served in the same pre-k class.

2. Is a certified teacher required for PK3?

- Yes, a certified teacher is required for PK3 and PK4.

3. Do you have to serve eligible three year olds before offering a tuition-based program?

- There is no statute that requires districts to serve eligible three-year olds before ineligible children, but best practice is to serve eligible children first. Remember that ADA funds are not drawn down for ineligible children. Some districts also provide a blended model where both eligible and ineligible children attend the same program.

Frequently Asked Questions cont.

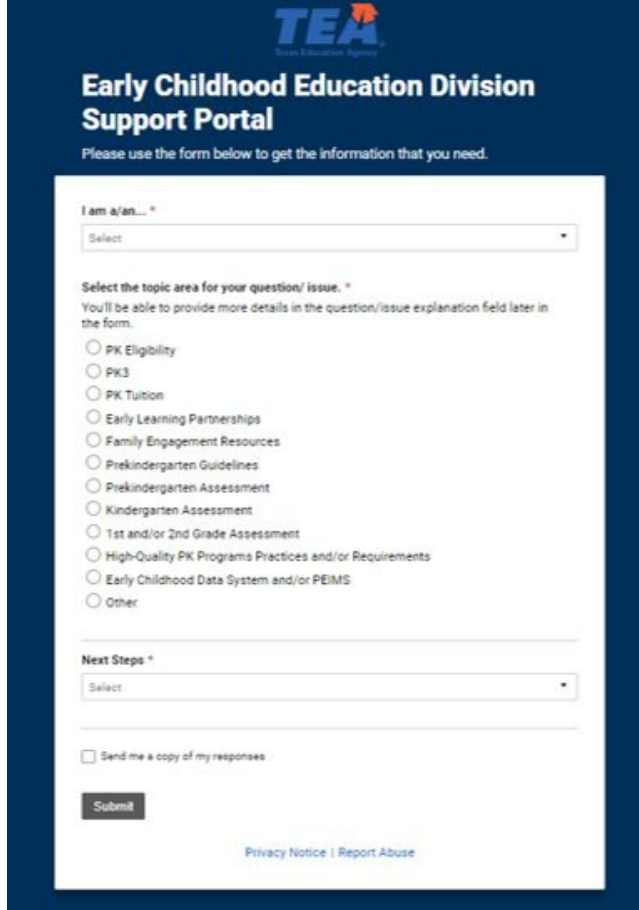
4. What other funding sources can LEAs use to support/implement PK programs?

- Districts fund district supported PK3 programs with ADA funds from the Foundation School Program funding. Some districts use a portion of their Early Education Allotment funds to provide PK. While other districts use "local" funds and resources to support their programs. Outside of ADA, each LEA can make decisions about funding on the local level.

5. Can the Early Education Allotment be used to fund ineligible children?

- Yes, only if serving all 4's in full day.

Contact the Team



The screenshot shows the 'Early Childhood Education Division Support Portal' form. At the top is the TEA logo and the title. Below the title is a instruction: 'Please use the form below to get the information that you need.' The form itself has a white background and includes a dropdown menu for 'I am a/an...' with 'Select' as the placeholder. Below this is a section titled 'Select the topic area for your question/ issue.' with a note: 'You'll be able to provide more details in the question/issue explanation field later in the form.' This section contains a list of radio button options: PK Eligibility, PK3, PK Tuition, Early Learning Partnerships, Family Engagement Resources, Prekindergarten Guidelines, Prekindergarten Assessment, Kindergarten Assessment, 1st and/or 2nd Grade Assessment, High-Quality PK Programs Practices and/or Requirements, Early Childhood Data System and/or PEIMS, and Other. Below the radio buttons is another dropdown menu for 'Next Steps' with 'Select' as the placeholder. At the bottom of the form is a checkbox labeled 'Send me a copy of my responses' and a 'Submit' button. At the very bottom of the form, there are links for 'Privacy Notice' and 'Report Abuse'.

Introducing the new ECE Support Portal

- Offers targeted content, including PK3!
- Consistent and timely responses
- Better tracking from ECE to serve stakeholders

Thank you for joining

