

A photograph of a female teacher with short dark hair and glasses, wearing a white t-shirt, sitting on the floor and reading a book to a group of young students. The students are also sitting on the floor, looking at the book. They are in a library or classroom setting with bookshelves in the background. The image is semi-transparent, allowing the text to be overlaid.

**Decision 8: STRONG SUMMER
SUPPORTS
TCLAS Initiative Kickoff Webinar**

Welcome and Congratulations on your Award!



Brian Doran
Director of Expanded Learning Models
ADSY Team



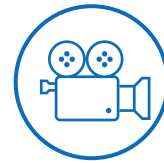
Shaelyn Macedonio
Summer Learning Project Manager
ADSY Team

Agenda and FYIs for Today's Webinar

Agenda

1. Welcome and Introductions
2. TCLAS Award Next Steps
3. Decision Specific Deep Dive
4. Recap Next Steps

FYIs



Please ask questions and drop them in the **Question and Answer** box in Zoom



This **recording and these slides will be posted** on tea.texas.gov/tclas shortly after this webinar concludes

TCLAS Next Steps

1

What: Complete **Award Confirmation Survey** and re-commit to program assurances for all awarded supports
When: Due by 11:59 PM CT on September 10th

← Complete!

2

What: Complete **Program Onboarding** by:

- Attending mandatory support-specific kickoff webinars
- Completing additional onboarding as outlined in pdf attachment to award confirmation survey (also reviewed in this webinar)

When: September 13th- 21st

← You Are Here

3

What: Complete **eGrants Application:**

- Complete eGrants Application to receive your Notice of Grant Agreement (NOGA)
- Optional Supports: TCLAS eGrant Calculator Available for LEAs and eGrants Webinar and Office Hours

When: Open Mid-September; Closes October 29th (Processed on first-come, first served basis)

FYI - All of this information is detailed in your **award confirmation email and the attached PDF!**



Onboarding Webinar Schedule

Key	
	General TCLAS
	eGrants
	Support-Specific

9/6	9/7	9/8	9/9	9/10
[Labor Day]	Award notification & confirmation survey sent		9am-10am: TCLAS Launch Webinar	Confirmation survey due
9/13	9/14	9/15	9/16	9/17
9am-10am: TCLAS Launch	4pm-5pm: Decision 10	<ul style="list-style-type: none"> 9am-10am: Decision 1 10:30am-11:30am: Decision 3B 2:30pm-3:30pm: Print Access (Decisions 2B & 3C) 4-5pm: Digital Access (Decisions 2A, 3A, 3D, & 6) 	<ul style="list-style-type: none"> 9am-10am: Decision 9A 10:30am-11:30am: Decision 9B 1pm-2pm: Decision 9C 2:30pm – 3:30pm: Decision 2A & 2C (CRIMSI) 4pm-5pm: Decision 2A & 2C (SAVL) 	9am-10am: eGrants
9/20	9/21	9/22	9/23	9/24
9am-10am: Decision 3E	<ul style="list-style-type: none"> 9am-10am: Decision 8 1pm-2pm: Decision 5 2:30pm-3:30pm: Decision 4 4pm-5pm: Decision 7 	<div style="border: 2px solid red; padding: 5px; display: inline-block;"> <p style="color: red; margin: 0;">We Are Here</p> </div>		9am-10am: eGrants office hours
<p>All webinar registration links are available on tea.texas.gov/tclas Recordings and slides will also be posted on tea.texas.gov/tclas</p>				10/1, 10/15, and 10/29 9am-10am: eGrants office hours



Optional eGrants Application Webinars

Webinar	Date/Time	Short Registration Link
Overview Webinar	Friday, 9/17 9– 10 am CT	bit.ly/TCLAS_eGrants_Overview
Office Hours #1	Friday, 9/24 9– 10 am CT	bit.ly/TCLAS_eGrants_OH1
Office Hours #2	Friday, 10/1 9– 10 am CT	bit.ly/TCLAS_eGrants_OH2
Office Hours #3	Friday, 10/15 9– 10 am CT	bit.ly/TCLAS_eGrants_OH3
Office Hours #4	Friday, 10/29 9– 10 am CT	bit.ly/TCLAS_eGrants_OH4

Audience: District staff submitting eGrants application



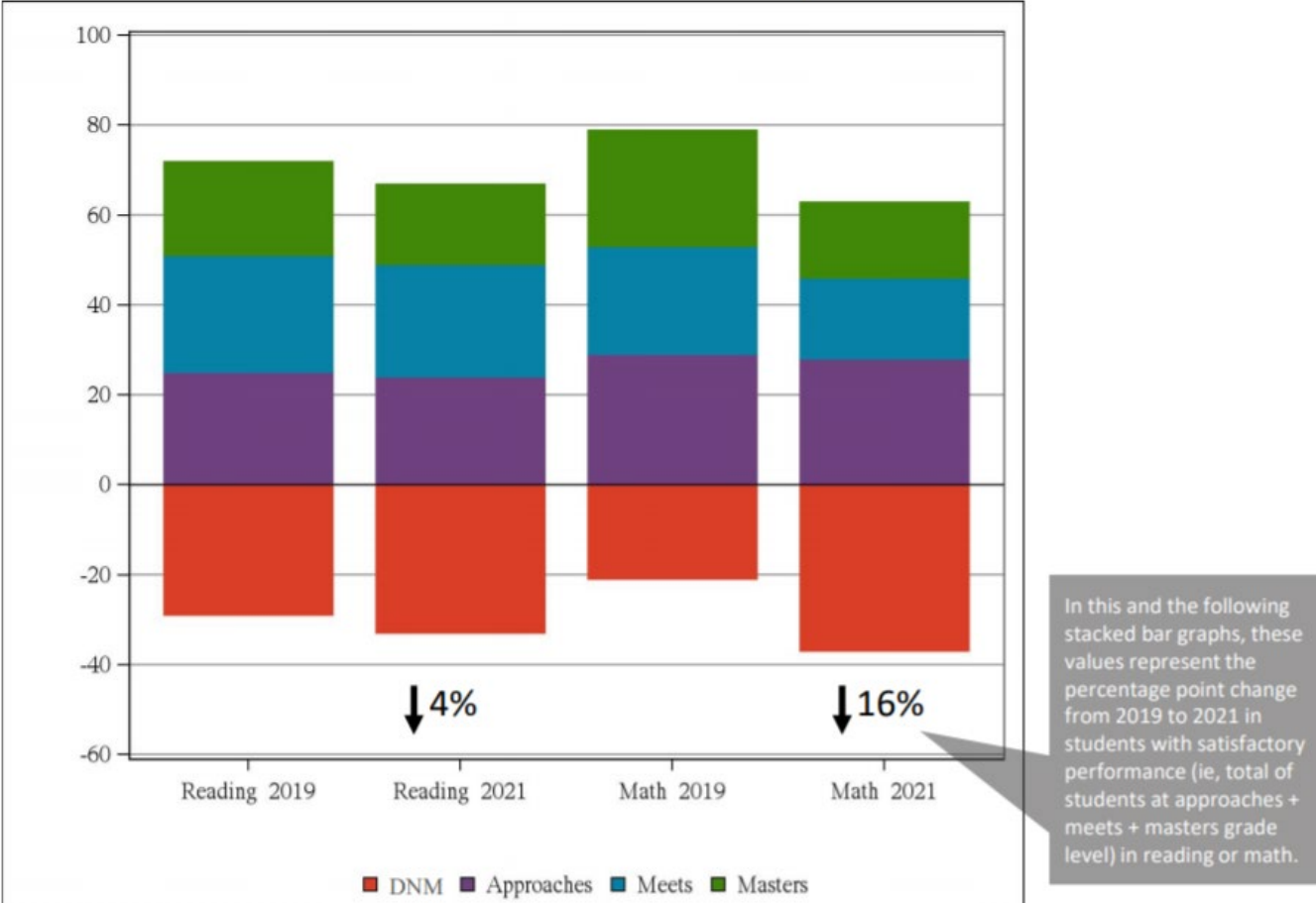
A photograph of a female teacher with short dark hair and glasses, wearing a white t-shirt, sitting on the floor and reading a book to a group of young students. The students are also sitting on the floor, looking at the book. They are in a library or classroom setting with bookshelves in the background. The image is semi-transparent, allowing the text to be overlaid.

**Decision 8: STRONG SUMMER
SUPPORTS
Deep Dive**

2021 STAAR Results: COVID Caused Additional Achievement Setbacks

- Substantial drops in student achievement have resulted from COVID
- Math achievement, specifically, has seen dramatic drops in obtaining a satisfactory score (16% drop)

STAAR Achievement in Math and RLA



Solution: Strong Summer Program

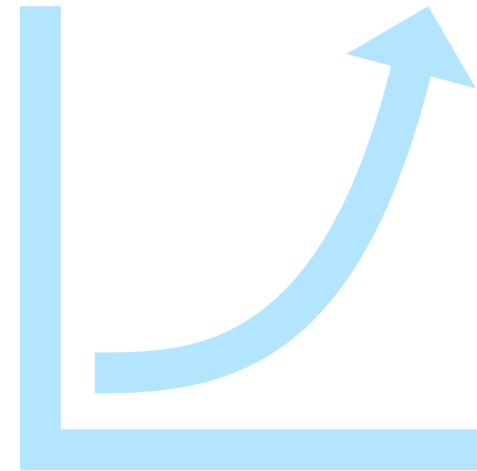
Summer is an opportunity to accelerate learning through implementing evidenced-based strategies.

According to RAND Research, an evidenced based, high quality summer learning program consists of:

- **No cost**, full day program for **5 to 6 days per week**
- **Small classes** of 15 or fewer students
- **Certified teachers** focused on **3 hours of academics per day**
- **Enrichment activities daily**
- **Meals**
- **Transportation**

Resulting Student Outcomes:

- **Short term gains in math** were equivalent to about **15%** of what students learn in math in a calendar year
- After two consecutive summers, students with high attendance (**20 or more days per summer**) outperformed peers in academic and non-academic areas
- Students who received a minimum of **25 hours of math and 34 hours of ELA** performed better on subsequent state math and ELA tests



Solution: Strong Summer Program

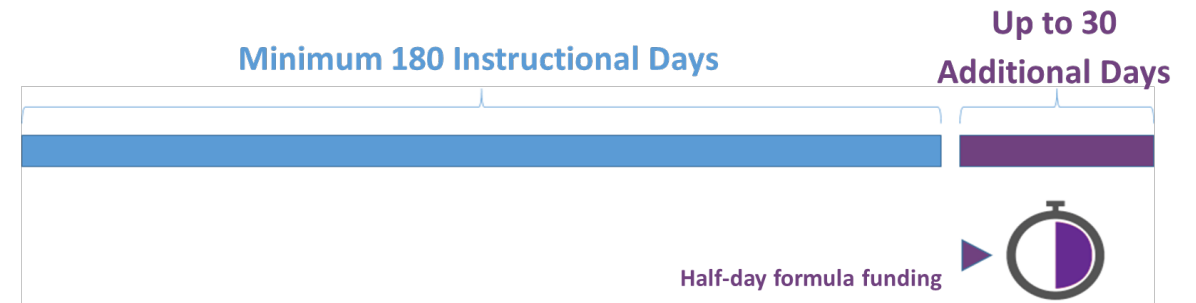
Decision eight aligns LEAs with evidence-based research practices for summer and implements long-term ADSY funding.

A Strong Planning Process

CATEGORY	KEY ACTIVITIES	EARLY APR	LATE APR	EARLY MAY	LATE MAY	EARLY JUN
1. Designing & Planning (Management)	Outline cross-departmental leadership structure for planning	█				
	Determine planning process and timeline	█	█			
1. Designing & Planning (Data)	Develop new or refine existing performance management plan		█	█	█	
	Use data to inform instruction and program development			█	█	█
2. Student Recruitment	Notify parents of enrollment status			█	█	█
	Develop and execute strategies to promote attendance and retention		█	█	█	█
3. Staffing & PD	Determine staffing needs and hiring timeline	█				
	Plan professional development calendar		█	█		
4. Climate and Culture	Define program culture and operating policies and procedures		█	█		
	Prepare campus management procedures			█	█	
5. High Quality Instructional Materials	Identify instructional materials needs for summer program	█				
	Adopt high quality instructional materials for summer program	█	█	█		
6. Enrichment	Recruit or select and contract with enrichment partners, providers, or staff		█	█		
	Plan for quality enrichment		█	█	█	
7. Budgeting	Prepare budget for summer program	█	█			
	Manage and reconcile budget regularly					█
8. Schedules and Rosters	Develop program schedule	█				
	Develop and share campus schedules			█	█	
9. Site Operations	Identify campuses for summer program	█	█			
	Coordinate transportation, food services, and supplies	█	█	█	█	

Benefit from Additional Days School Year Funding (ADSY)

HB 3 adds **half-day formula funding** for school systems that want to add instructional days (beyond a minimum 180 days, **up to 210 days**) to any of their elementary schools (grades **PK-5**).



Supports will be delivered through the ADSY Planning and Execution Program (PEP) Voluntary Summer Learning Grant

ADSY PEP Program Parameters



Serve at least one grade level within **grades PreK-5**



Ensure the **campus academic calendar will have at least 180 instructional days**, not including staff development waivers



Have a **campus academic calendar with at least 75,600 operational minutes**



Be willing to **add 25 to 30 additional half days of instruction (ADSY days)** to the 180 instructional days in a campus's academic calendar



Have a **certified teacher deliver at least three hours of academic instruction and three hours of enrichment** on dedicated ADSY days



Host **ADSY days on separate days** from regular instructional calendar days

Strong Summer Supports: ADSY PEP Cycle 2

The dates below are the key milestones for the ADSY Planning and Execution Program. Time markers are approximate.

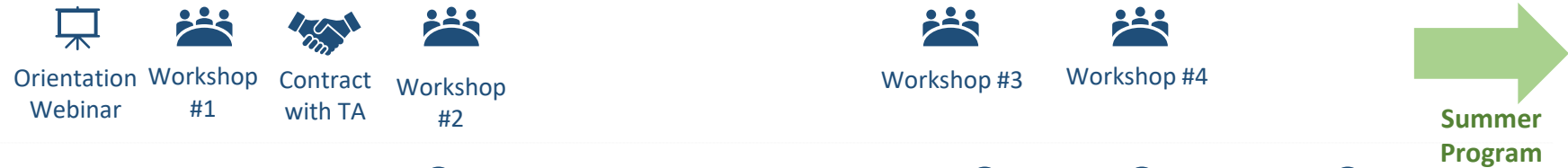
Planning Year (2021-2022)

June | Jul | Aug | Sep | Oct | Nov | Dec | Jan | Feb | Mar | Apr | May

Programming



Supports



Milestones



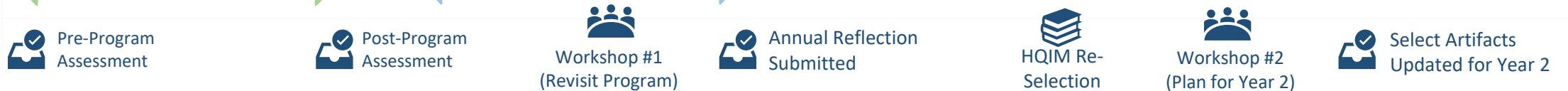
Execution Years (annually starting in 2022-2023)

June | Jul | Aug | Sep | Oct | Nov | Dec | Jan | Feb | Mar | Apr | May

Programming



Supports/
Milestones



TCLAS and ADSY PEP Timing

Depending on each LEA's TCLAS application, they are a part of a specific ADSY PEP cycle with varying timelines.

	Cycle 1 LEAs	Cycle 2 LEAs	Cycle 3 LEAs	Cycle 4 LEAs
What do I need from today?	Welcome back! Focus on next steps for funding 8A, 8B and 8C	Learn about this year's planning process and grants next steps	Learn about next year's planning process and grants next steps	Learn about next year's planning process and grants next steps
When is my planning year (workshops, strategic plan submissions)?	'20-'21	'21-'22	'22-'23	'23-'24
When do I first run an ADSY PEP Summer Program?	Summer '21	Summer '22	Summer '23	Summer '24
What years do I run an ADSY PEP Summer Program?	'21-'24	'22-'25	'23-'26	'24-'27

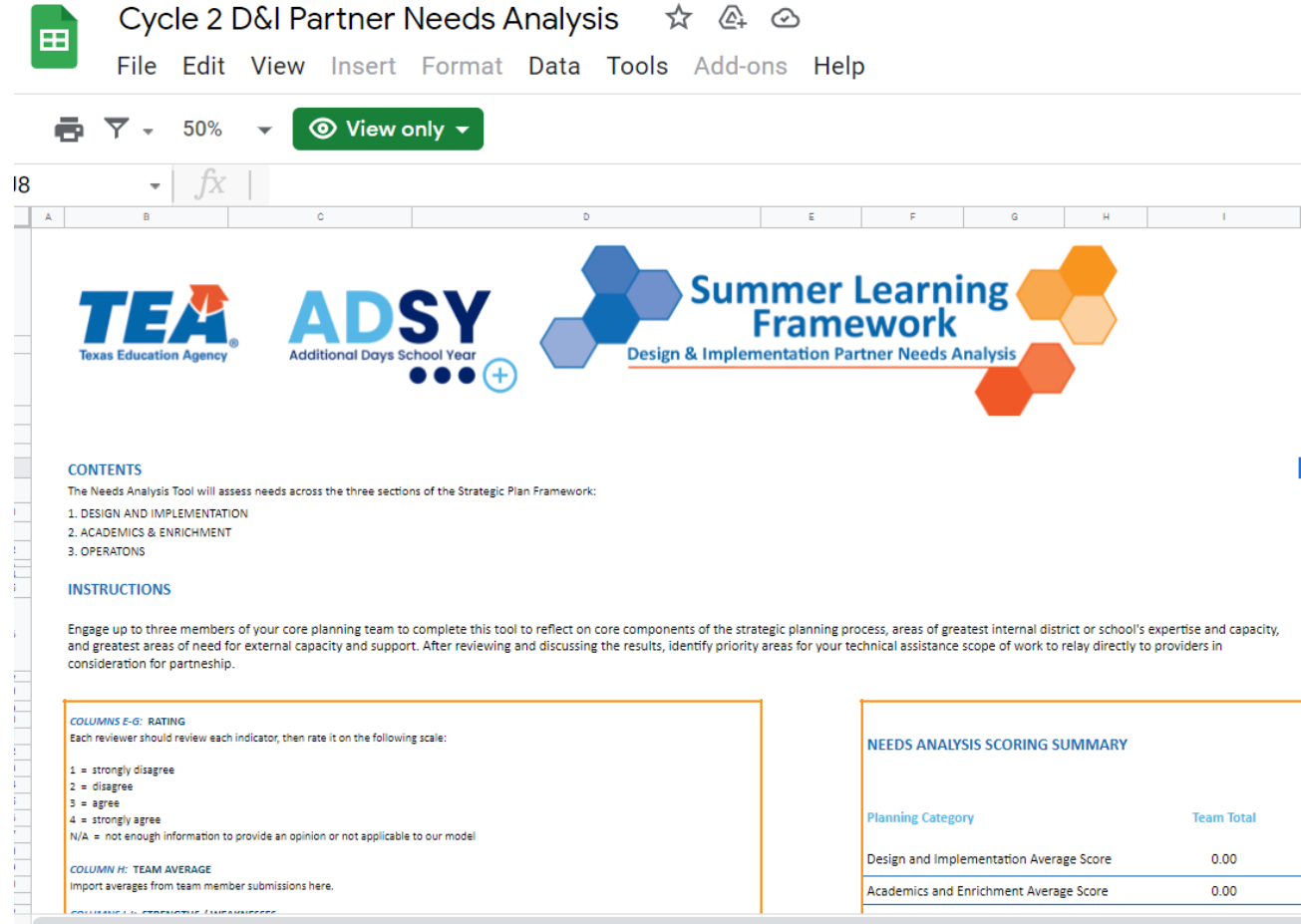
Welcome! You are part of a growing network of districts implementing research-based summer programming!



STEP 1: Meet Your Match (Support 8A)

It's time for each LEA to match with their Design and Implementation Partner for ADSY PEP

1. TEA matches you with a pre-vetted Design & Implementation Partner (DIP) via a Needs Analysis. DIPs support your step-by-step planning process to implement a high-quality summer learning program
2. LEA Budget for DIPs: Base funding of \$50k plus \$10k per campus in planning year



Cycle 2 D&I Partner Needs Analysis

File Edit View Insert Format Data Tools Add-ons Help

50% View only

18

TEA Texas Education Agency

ADSY Additional Days School Year

Summer Learning Framework
Design & Implementation Partner Needs Analysis

CONTENTS
The Needs Analysis Tool will assess needs across the three sections of the Strategic Plan Framework:
1. DESIGN AND IMPLEMENTATION
2. ACADEMICS & ENRICHMENT
3. OPERATIONS

INSTRUCTIONS
Engage up to three members of your core planning team to complete this tool to reflect on core components of the strategic planning process, areas of greatest internal district or school's expertise and capacity, and greatest areas of need for external capacity and support. After reviewing and discussing the results, identify priority areas for your technical assistance scope of work to relay directly to providers in consideration for partnership.

COLUMNS E-G: RATING
Each reviewer should review each indicator, then rate it on the following scale:
1 = strongly disagree
2 = disagree
3 = agree
4 = strongly agree
N/A = not enough information to provide an opinion or not applicable to our model

COLUMN H: TEAM AVERAGE
Import averages from team member submissions here.

NEEDS ANALYSIS SCORING SUMMARY

Planning Category	Team Total
Design and Implementation Average Score	0.00
Academics and Enrichment Average Score	0.00

STEP 1: Match Schedule (Support 8A)

Matching Process

Step 1: ACTION REQUIRED: Following today's webinar the ADSY PEP team will send you a link to the Needs Analysis. Please download a copy, complete it for your LEA, and send it back to the ADSY inbox at adsy@tea.Texas.gov by **Tuesday, September 28th*.**

Step 2: On Friday, October 1st, TEA will send each LEA their recommended DIP based on the Needs Analysis and partner capacity. **DIPs will reach out to LEAs once the recommendation e-mail is received.**

Step 3: ACTION REQUIRED: By **Friday, October 15***: LEA confirms intent to contract with a DIP. As for DIP availability, DIPs confirmed based on first come first served basis. DIPs responsible for notifying TEA who they contract with.

Design and Implementation Partners



*Deadlines
for Cycle 2
Only

Payment for Support 8A

Payment for Support 8A is distributed through the Texas Impact Network (TIN)/ Communities Foundation of Texas (CFT), a funder of districts participating in ADSY PEP.

Support 8A – Funded by TIN:

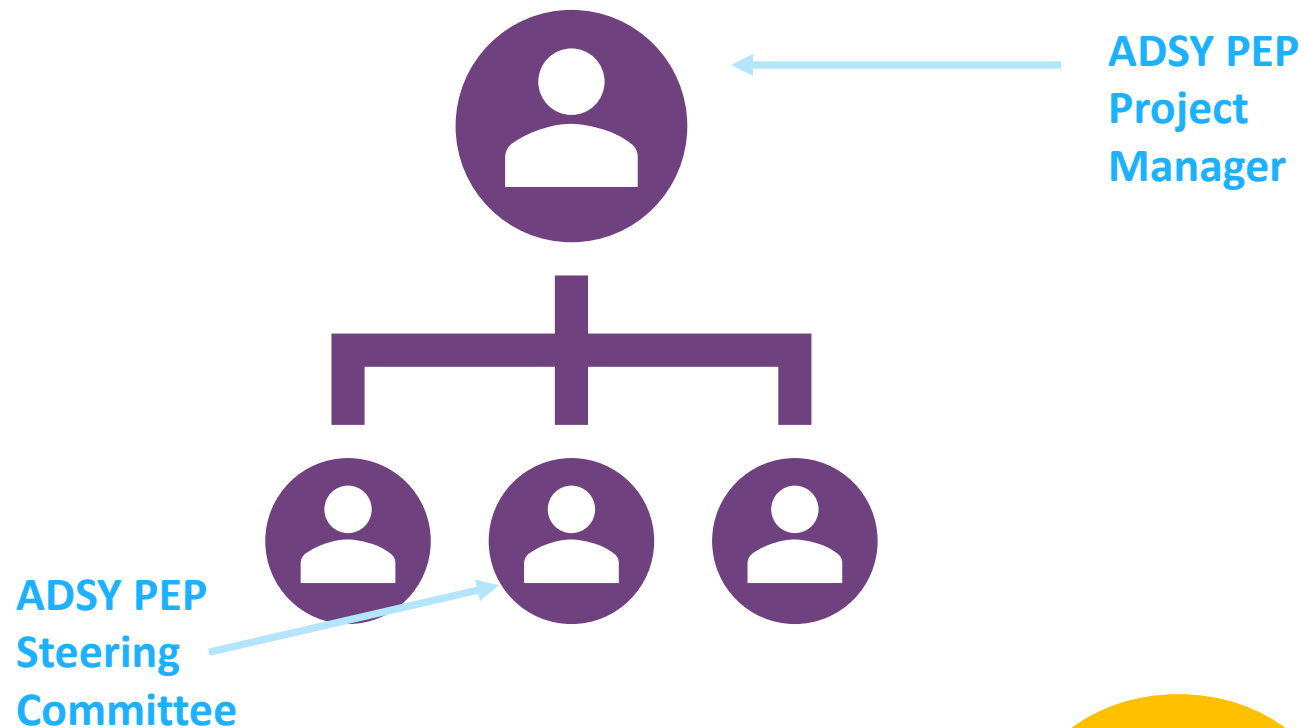
This grant is required to include the cost of a Design and Implementation vendor to partner with your LEA. Other expenses can include one-time, start-up costs such as family engagement and recruitment, professional development, curriculum and materials. The grant will not include indirect/overhead or ongoing program costs such as transportation, student meals, or teacher salaries.

Next Steps: The business contact listed in your TCLAS application will receive instructions for the CFT Grants portal on Wednesday, September 22. **LEAs will need to submit a completed grant budget, due diligence documentation, and contact information for a designee legally authorized to execute the grant by Friday, October 15.** Please reach out to frabbi@cftexas.org with any questions about support 8A.



STEP 2: Designate an ADSY PEP Project Manager (Support 8b)

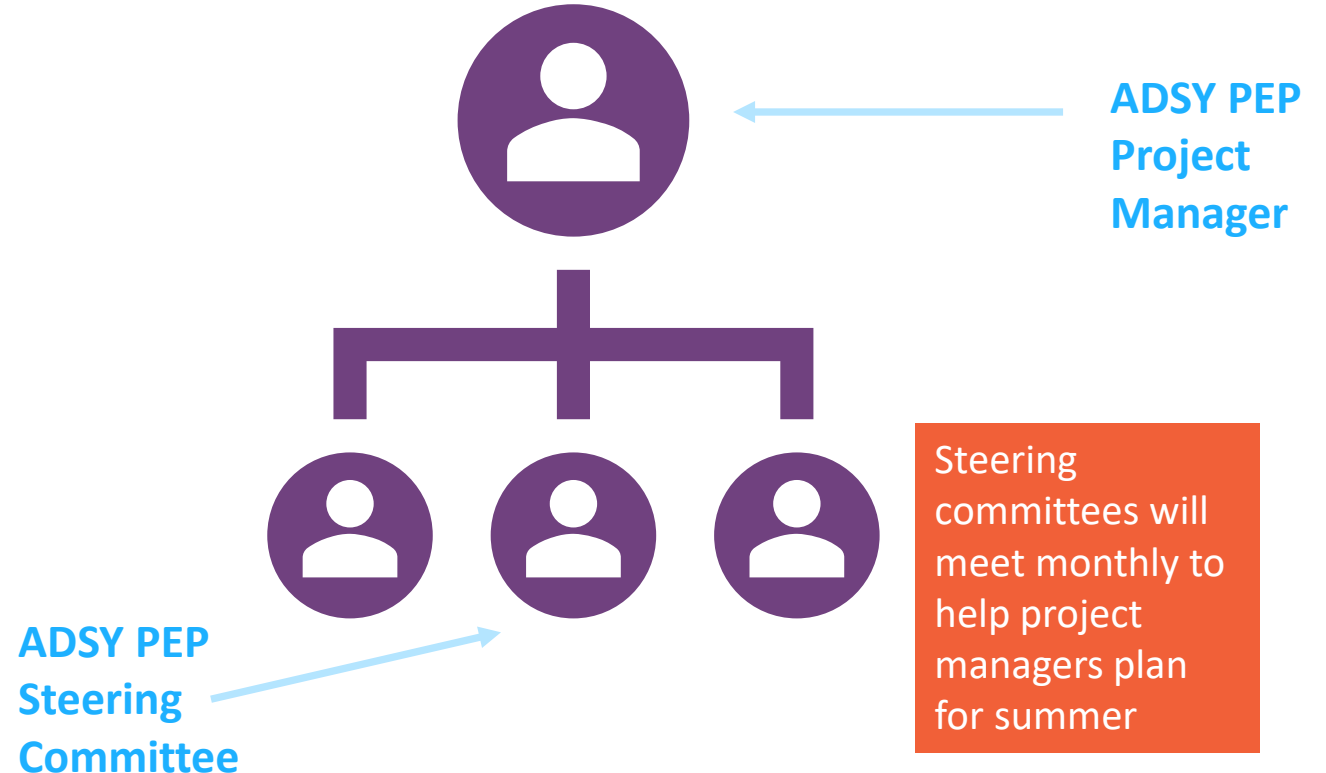
1. **ACTION REQUIRED:** Designate or hire a .5 FTE project manager by **Monday, November 1*** to oversee your ADSY PEP program (if different than your existing Decision 8 point of contact)
 - *Support 8B provides base funding of \$62.5k for the planning year and each additional eligible year*
2. **ACTION REQUIRED:** Have your project manager designate a steering committee of district leaders to oversee ADSY implementation



*Deadlines for Cycle 2 Only

STEP 3: Designate an ADSY PEP Steering Committee (Support 8b)

1. Assurance: Grantees commit to forming a cross-departmental Steering Committee, including a representative from the Finance team, to guide summer planning
2. Potential staff considerations for steering committees:
 - **Required: CFO / LEA finance lead**
 - Teachers
 - Curriculum Specialist
 - Enrichment Partner Coordinator
 - Campus Principal
 - Operations Manager



Operational Funds to get to 180 instructional days (Support 8c)

8c funding is distributed in general revenue dollars. LEAs have total control over how to spend these funds.

1. **TCLAS helps fund LEAs to get to a 180-day calendar**
2. **Total number of students enrolled at participating campuses will be multiplied by 5 days of ADA funding (\$52/student each day)**
3. **Example: A 100-student campus would receive \$26,000 of funding**



Note: LEAs in Cycle 1 and Cycle 2 of ADSY PEP implementing in the summers of 2021 and 2022 were awarded approximately 8 days of ADA funding to support the earlier transition to 180 days

Review the ADSY PEP Assurances: Part One

- Grantees will meet all ADSY eligibility requirements for participating campuses, including:
 - Serve at least one grade level within grades PreK-5
 - Campus academic calendar(s) will have at least 180 instructional days, not including staff development waivers
 - Campus academic calendar(s) will have at least 75,600 operational minutes
 - Host ADSY days on separate days from regular instructional calendar days

- ADSY Planning and Execution Program and Summer Program Support grantees agree to meet additional planning requirements, including:
 - Create a comprehensive Strategic Plan utilizing the planning resources and templates provided in the grant program
 - Add 25 to 30 additional half days of instruction (ADSY days) to the 180 instructional days in a campus's academic calendar
 - Have a certified teacher deliver at least three hours of academic instruction specific to math and reading and three hours of enrichment on dedicated ADSY days, for a minimum of six hours of daily programming
 - Contract with an approved ADSY Design & Implementation vendor (ADSY PEP), or an approved ADSY Design & Implementation vendor or a vendor approved for Design & Implementation through another TEA initiative (Summer Planning Support)
 - Participate in all learning community sessions during the 2021-2022 school year (up to one day per month)
 - Participate in three annual reflection processes following the planning year to continuously improve summer programs based on existing data

Review the ADSY PEP Assurances: Part Two

- Summer learning programs must:
 - Include at least 25 days
 - Include at least 360 operations minutes (6 hours) per day
 - Include at least 180 minutes (3 hours) dedicated to math and reading per day
 - Include additional enrichment activities such as arts, science exploration, and sports
- Instructional minutes must be taught by a certified Texas teacher
- Grantees agree to participate in the Texas Summer Learning Study being conducted by American Institute of Research, a study researching the impact of implementing research-based practices for summer learning at the LEA level The Texas Covid Learning Acceleration Support (TCLAS Program) 53
- Grantees commit to bringing an ADSY calendar to their school board for approval by March 1st of the year prior to their selected year of implementation. Should the board not approve an ADSY calendar that includes a base 180 days, grantee will not receive additional execution funding.
- Operations funding covered by support 8C are intended to support any cost of increasing a base calendar to 180 days in the implementation years. Grantees who do receive local board approval of an ADSY-eligible calendar are not eligible for operations funds.

Review the ADSY PEP Assurances: Part Three


- Grantees should strive to ensure teachers are assigned to students in the same grade level they have taught previously during the school year
- Grantees commit to forming a cross-departmental Steering Committee, including a representative from the Finance team, to guide summer planning
- Grantees agree to conduct an ADSY PEP approved pre- and post-summer assessment and agree to share program effectiveness data with TEA, including student outcomes and stakeholder engagement
- Summer Program Support grantees may be asked to evaluate provide peer feedback on other Strategic Plans using a common rubric
- Grantees commit to utilizing high quality instructional materials during summer programming. TEA defines high quality instructional materials as those that:
 - 1) are aligned to research-based instructional strategies in the content;
 - 2) support all students in accessing grade-level content;
 - 3) include embedded assessments/progress monitoring aligned to the materials; and
 - 4) include implementation supports that are educative for teachers
- LEA understands that to meet this definition for participating campuses, LEAs shall use Math and English materials listed on 1) Texas Home Learning; 2) Texas Resource Review (rated 80% or higher), 3) EdReports (rated Green and then aligned to the TEKS); or 4) materials evaluated by the LEA in partnership with their Technical Assistance provider using established Texas Resource Review rubrics and rated 80% or higher.

Meet the ADSY PEP Partners



Upcoming ADSY PEP Events

- ❖ **NEXT EVENT:** Tuesday, October 5, 9-10am CT: ADSY PEP Kick Off
- ❖ Tuesday, October 26, 9-1pm CT: ADSY PEP Learning Community – Workshop #1
- ❖ Wednesday, November 17: 9-12 pm CT: Cycle 2 Learning Community Workshop #2
- ❖ Friday, December 10, Cycle 2 Strategic Plan Submission Part 1 Due

 All remaining '21-'22 ADSY PEP events are for the Cycle 2 cohort only.

Cycles 3 and 4 – We will see you next year!

The Learning Agenda (TLA), the ADSY PEP Learning Community facilitators, will send out calendar invites for all these events in the coming days. Feel free to forward the calendar invites to key stakeholders at your campus.

Additional Opportunity: Texas CFO Network

Your participation in ADSY PEP opens up an opportunity specifically curated for personnel overseeing school finance systems.

The **Texas CFO Strategy Network** brings together school finance leaders from across Texas who are committed to maximizing the impact of their district's resources in service of students.

Led by Education Resource Strategies (ERS) in partnership with TEA and the Texas Impact Network (TIN), the network will focus on equipping CFOs, finance directors and school business officials to be strategy leaders – to create processes, structures and policies that help their systems align district resources (people, time, and money) with system & school designs that meet the needs of all students.

Districts will be grouped into cohorts of similar-sized districts to facilitate cross-district sharing and to ensure content and discussions feel relevant to system context.

Next steps:

- 1) Look for an email from Bridget.Worley@TexasImpactNetwork.org with information about the program and directions for signing up.
- 2) Share the email with your superintendent and school business official for consideration.





Closing and Next Steps

This support is a heavy lift intended to have a large impact

This support is designed to have a significant and lasting impact on learning acceleration for your students and requires a significant amount of time and effort from you and your staff.

If, after today's webinar, you do not believe that your LEA can fully commit to all requirements and assurances of this TCLAS support, please send an immediately to tclas@tea.texas.gov.



ADSY PEP Orientation Action Items

- ❖ Step 1) **Download and complete the TEA Needs Analysis** you will receive following this orientation and send it back to the ADSY inbox (adsy@tea.texas.gov) **by Tuesday, September 28**
- ❖ Step 2) Each LEA will receive instructions for the CFT Grants Portal on **Wednesday, September 22**. LEAs will need to submit a **completed grant budget, due diligence documentation, and a designee legally authorized to execute the grant by Friday, October 15**.
- ❖ Step 3) **Hire or designate an ADSY PEP project manager by Monday, November 1*** if different from your existing Decision 8 point of contact
- ❖ Step 4) Have the ADSY PEP Project Manager **designate a cross-departmental ADSY PEP steering committee**
- ❖ Step 5) **Make contact with your recommended DIP** (recommendations go out Friday, October 1) by EOD on **Wednesday, October 6**
- ❖ Step 6) **Notify your selected DIP of intent to contract by Friday, October 15**

TCLAS Next Steps

1

What: Complete **Award Confirmation Survey** and re-commit to program assurances for all awarded supports
When: Due by 11:59 PM CT on September 10th

← Complete!

2

What: Complete **Program Onboarding** by:

- Attending mandatory support-specific kickoff webinars
- Completing additional onboarding as outlined in pdf attachment to award confirmation survey (also reviewed in this webinar)

When: September 13th- 21st

← Complete!

← Homework

3

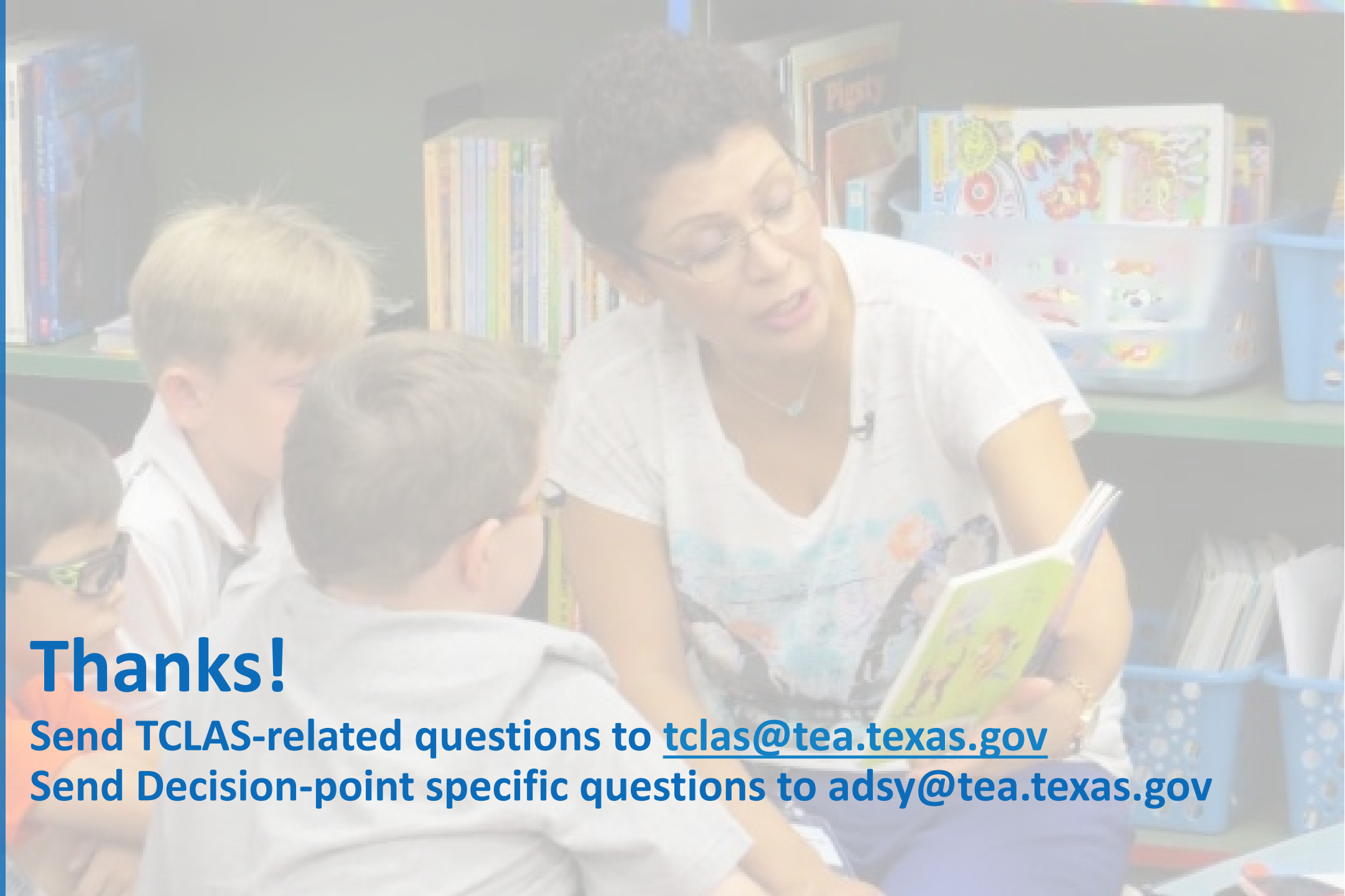
What: Complete **eGrants Application:**

- Complete eGrants Application to receive your Notice of Grant Agreement (NOGA)
- Optional Supports: TCLAS eGrant Calculator Available for LEAs and eGrants Webinar and Office Hours

When: Open Mid-September; Closes October 29th (Processed on first-come, first served basis)

FYI - All of this information is detailed in your **award confirmation email and the attached PDF!**





Thanks!

Send TCLAS-related questions to tclas@tea.texas.gov

Send Decision-point specific questions to adsy@tea.texas.gov