



Census Block Group Calculator Instructions

TEA has created a Census Block Group Calculator that will find the census block group number information for any specific address.

Column Descriptions

Table 1: Column Descriptions

Column	Name	Description	Required
B	UID	Unique Student ID	Yes
C	Street 1	House Number and Street Name	Yes
D	Street 2	Apt, Unit, Ste, etc.	No
E	City		Yes
F	State	State Abbreviation	Yes
G	Zip	Zip code	Yes
H	Zip Extension	Zip code Extension	No
I	Latitude	calculated	n/a
J	Longitude	calculated	n/a

Column	Name	Description	Required
K	Confidence %	calculated	n/a
L	Type	Type of Address (Point, Sub, Street, Postal, etc.)	n/a
M	ST Code	State code	n/a
N	Cty Code	County code	n/a
O	Tract	Census Tract code	n/a
P	Block Group	Block Group code	n/a
Q	12 Digit GEOID	Census Block Group Number (calculated from columns M-P)	n/a

Calculator Instructions

1. After opening the file, you may receive the following security warning. Click or select Enable Content to completely open the file. Macros must be enabled for the calculations to work properly. (See Figure 1.)

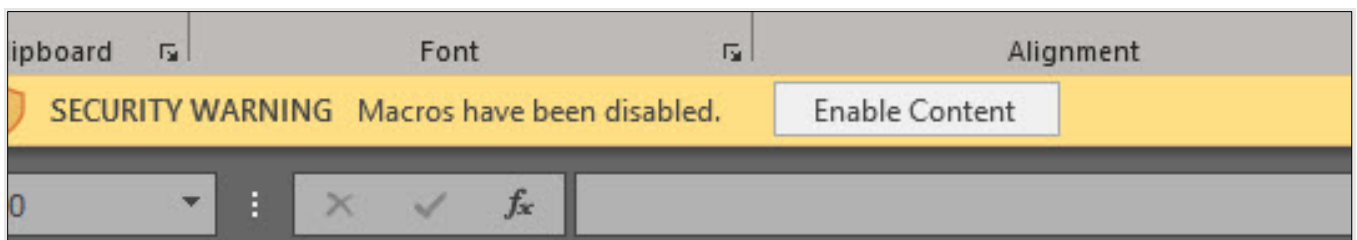


Figure 1: Macros Disabled Warning

2. If you skip step one above and attempt to use the Calculate button without turning on macros, you may receive the

following warning. Click or select OK. Refer to step one above for directions. (See Figure 2.)

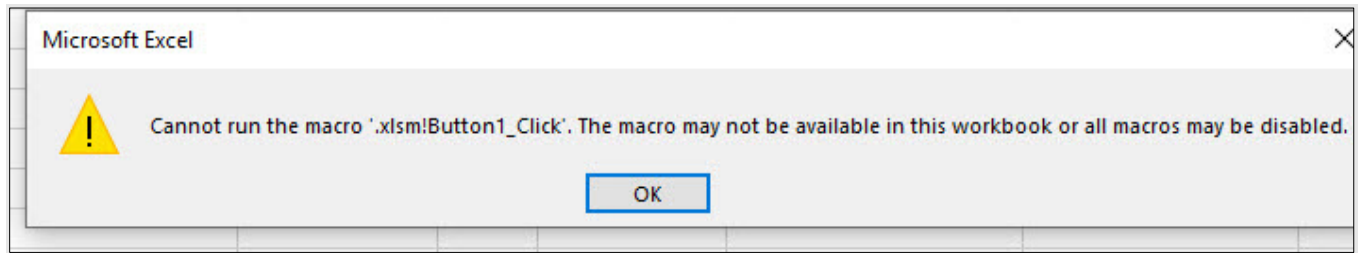



Figure 2: Cannot Run Macro Warning

3. Paste/Enter appropriate information into columns B-H. (Use the Column Description section above as a guide.)



Warning: The more information you include in columns B-H, the more accurate the results will be. Be as accurate as possible when entering the address and include a specific street name (Ave., Cv., Ln., etc.). All columns in red are required. If you do not include a complete address (using the required fields) you may receive inaccurate results.

4. Click the Calculate button in column A and wait for all rows to calculate. (See Figure 3.)

	A	B	C	E	F	G
1	Column 1	UID	Street 1	City	State	Zip
2	Version X.Y	12433	1701 N Congress Ave	Austin	TX	78701
3	Calculate	12434	17750 N US HWY 287	TENNESSEE COLON	TX	75861
4		12435	420 W PALESTINE AVE	PALESTINE	TX	75801
5		12436	1509 ACR 346	PALESTINE	TX	75803
6	Clear	12437	3055 FM 2574	PALESTINE	TX	75803

Figure 3: Calculate Button and Required Fields

Accuracy

Address Type (column L) and the Confidence Percentage (column K) work together to determine the accuracy of the returned data.

Address Type

After hitting the Calculate button, the Calculator will return several types of addresses in the Type column. The following are the most accurate types:

- Point Address – This means that the calculator has found the exact building rooftop.
- Sub Address – This means that the calculator has found the exact building rooftop and has an apartment unit, floor, or individual building within a complex.

If the Calculator does not return a Point or Sub Address, verify the GEOID using the [Census Block Group Map](#).¹ See the Census Block Group Map Instructions for more information.

Confidence Percentage

After hitting the Calculate button, the Calculator will return a percentage score in the Confidence Percentage column. Any rows that returned a Point or Sub Address and have a confidence level less than 100%, should be verified using the Census Block Group

Changed as of 2020-2021

¹<https://tea-texas.maps.arcgis.com/apps/webappviewer/index.html?id=90eaceb0831a4eda96434231e652591b>

Map. See the Census Block Group Map Instructions for more information.

Filter

You can filter any column in Excel. Below is an example using the Confidence Percentage column.

1. Click or select the Data tab in the top ribbon.
2. Select all the header rows. Notice that header rows do not have arrows inside them yet. (See Figure 4.)

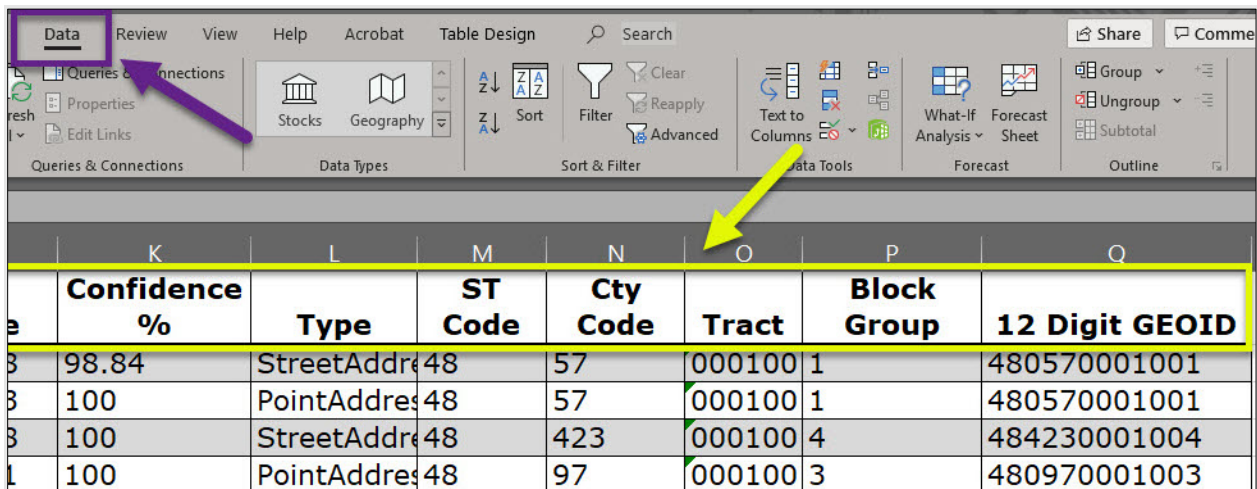


Figure 4: Select Data Tab

3. Click or select Filter. Notice that the header rows now contain arrows inside them.
4. In the Confidence % column, click or select the down arrow and sort smallest to largest. (See Figure 5.)

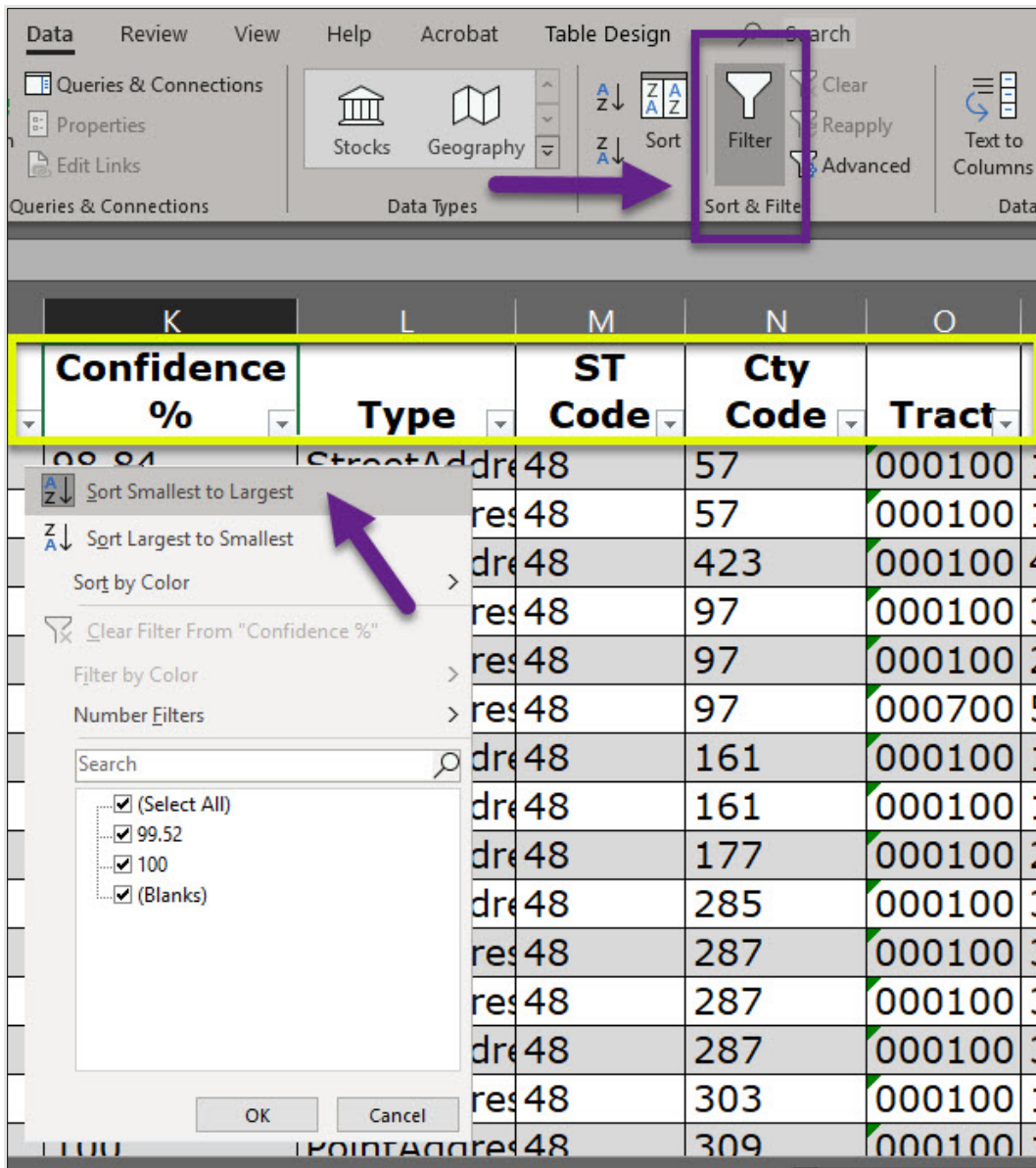


Figure 5: Filter Confidence Column

Recalculate Rows

If you need to recalculate a few rows after the initial run, remove the data in columns I-Q in those rows and click or select the Calculate button again. The Calculator will only recalculate those specific rows.

If you need to recalculate the entire data set, you can use the Clear button (column A). (See Figure 6.)

Note: If you click or select the Clear button, the data in all calculated fields will be deleted.

	A	B
1	Column 1 <input type="button" value="v"/>	UID <input type="button" value="v"/>
2	Version X.Y	12433
3	<input type="button" value="Calculate"/>	12434
4		12435
5		12436
6	<input type="button" value="Clear"/>	12437
7		12438
8		12439

Figure 6: Clear Button

Technical Issues

If you have any technical issues with the Census Block Group Calculator, please submit a [TIMS ticket](#)².

² <https://www.texasstudentdatasystem.org/content.aspx?id=25769811432>