

# STATE OF TEXAS ASSESSMENTS OF ACADEMIC READINESS

## Summary Report

### ENGLISH II

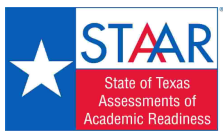
#### All Students

STATEWIDE

Report Date: FALL 2020  
Date of Testing: FALL 2020

Administration Summary			Number of Students Tested	Average Scale Score	Results for Each Reporting Category*																					
					Number	Percent	Did Not Meet		Approaches		Meets		Masters		Number of Points Possible						Number of Points Scored					
		#					%	#	%	#	%	#	%	1		2		3		4		5		6		
											Understanding/Analysis Across Genres		Understanding/Analysis of Literary Texts		Understanding/Analysis of Informational Texts		Composition		Revision		Editing					
											8		13		13		16		9		9					
													#	%	#	%	#	%	#	%	#	%	#	%		
<b>All Students</b>					42714	3665	27130	64	15584	36	8512	20	1114	3	4.7	59	7.1	54	6.3	49	6.9	43	5.1	57	5.3	59
<b>Male</b>					25632	3632	16622	65	9010	35	4756	19	491	2	4.7	59	6.9	53	6.3	48	6.5	41	5.1	56	5.2	58
<b>Female</b>					17081	3715	10507	62	6574	38	3756	22	623	4	4.8	60	7.3	56	6.4	49	7.5	47	5.1	57	5.6	62
<b>No Information Provided</b>					1	---	---	---	---	---	---	---	---	---	---	---	---	---	---	---	---	---	---	---	---	---
<b>Hispanic/Latino</b>			28248	3646	18299	65	9949	35	5321	19	535	2	4.7	59	7.0	54	6.2	48	6.8	43	5.1	56	5.2	58		
<b>American Indian or Alaska Native</b>			126	3653	84	67	42	33	24	19	1	1	5.0	62	7.0	54	6.2	48	6.8	43	5.2	58	5.4	60		
<b>Asian</b>			1107	3969	558	50	549	50	429	39	191	17	5.2	65	8.1	62	7.8	60	8.4	53	5.6	63	5.9	66		
<b>Black or African American</b>			6369	3552	4692	74	1677	26	679	11	36	1	4.4	56	6.6	50	5.7	44	6.4	40	4.6	51	5.1	57		
<b>Native Hawaiian or Other Pacific Islander</b>			77	3645	49	64	28	36	12	16	1	1	4.8	60	6.8	52	6.0	46	7.0	44	5.1	56	5.4	60		
<b>White</b>			6101	3803	3075	50	3026	50	1855	30	320	5	5.1	64	7.8	60	7.0	54	7.5	47	5.6	62	6.0	67		
<b>Two or More Races</b>			611	3797	322	53	289	47	177	29	28	5	5.1	63	7.7	59	7.0	53	7.6	47	5.5	62	5.9	65		
<b>No Information Provided</b>			75	3650	51	68	24	32	15	20	2	3	4.7	59	7.0	54	6.1	47	6.7	42	5.3	59	5.8	64		
<b>Economically Disadvantaged</b>																										
			Yes	29660	3613	20003	67	9657	33	4801	16	376	1	4.6	58	6.8	53	6.0	47	6.7	42	4.9	55	5.2	57	
			No	12960	3785	7069	55	5891	45	3688	28	734	6	5.0	63	7.6	59	7.0	54	7.5	47	5.4	60	5.7	64	
			No Information Provided	94	3667	58	62	36	38	23	24	4	4.6	58	7.1	55	6.4	49	6.8	42	5.1	57	5.6	63		
<b>Title I, Part A</b>																										
			Participants	24306	3650	15779	65	8527	35	4718	19	556	2	4.7	59	7.0	54	6.3	48	6.9	43	5.0	56	5.3	58	
			Nonparticipants	18320	3684	11301	62	7019	38	3769	21	554	3	4.8	60	7.2	55	6.4	49	7.0	44	5.2	57	5.4	60	
			No Information Provided	88	3688	50	57	38	43	25	28	4	4.8	60	7.2	55	6.4	49	6.9	43	5.1	57	5.7	64		
<b>Migrant</b>																										
			Yes	276	3572	195	71	81	29	38	14	3	1	4.4	54	6.8	52	5.9	45	6.3	40	4.9	54	4.9	55	
			No	42335	3666	26874	63	15461	37	8446	20	1107	3	4.7	59	7.1	54	6.3	49	6.9	43	5.1	57	5.3	59	
			No Information Provided	103	3714	61	59	42	41	28	27	4	4.8	60	7.4	57	6.5	50	7.1	44	5.3	59	5.8	65		
<b>Limited English Proficient</b>																										
			Current LEP	12469	3460	10269	82	2200	18	688	6	15	0	4.1	51	5.9	46	5.2	40	6.0	37	4.4	49	4.4	49	
			Non-LEP (Monitored 1st Year)	255	3591	170	67	85	33	39	15	0	0	4.5	57	6.8	53	6.3	48	6.4	40	4.9	55	4.9	54	
			Non-LEP (Monitored 2nd Year)	438	3792	223	51	215	49	122	28	6	1	5.3	66	7.8	60	7.2	55	7.6	47	5.7	64	5.9	65	
			Non-LEP (Monitored 3rd Year)	457	3792	218	48	239	52	128	28	8	2	5.3	66	7.9	61	7.2	55	7.7	48	5.6	63	5.9	65	
			Non-LEP (Monitored 4th Year)	840	3863	350	42	490	58	288	34	24	3	5.4	68	8.3	64	7.6	58	8.0	50	5.9	65	6.1	67	
			Non-LEP (Post Monitoring)	785	4051	197	25	588	75	443	56	56	7	5.9	74	9.2	71	8.7	67	8.8	55	6.4	71	6.7	75	
			Other Non-LEP	27357	3738	15634	57	11723	43	6775	25	1001	4	5.0	62	7.5	58	6.7	51	7.2	45	5.3	59	5.7	63	
			No Information Provided	113	3673	69	61	44	39	29	26	4	4.7	58	7.3	56	6.3	49	6.7	42	5.3	59	5.6	62		
<b>Bilingual</b>																										
			Participants	152	4120	41	27	111	73	93	61	20	13	5.9	74	9.2	71	8.9	69	9.0	56	6.5	72	6.8	75	
			Nonparticipants	42445	3664	27016	64	15429	36	8389	20	1090	3	4.7	59	7.1	54	6.3	49	6.9	43	5.1	57	5.3	59	
			No Information Provided	117	3654	73	62	44	38	30	26	4	3	4.5	56	7.2	55	6.3	49	6.6	41	5.2	57	5.6	62	
<b>ESL</b>																										
			Participants	12033	3452	9974	83	2059	17	633	5	13	0	4.0	50	5.9	45	5.2	40	5.9	37	4.4	48	4.3	48	
			Nonparticipants	30573	3749	17090	56	13483	44	7851	26	1097	4	5.0	63	7.6	58	6.8	52	7.3	46	5.4	60	5.7	64	
			No Information Provided	108	3658	66	61	42	39	28	26	4	4.5	56	7.2	55	6.3	49	6.6	41	5.3	58	5.6	62		
<b>Special Education</b>																										
			Yes	4124	3433	3400	82	724	18	259	6	18	0	4.0	50	6.0	46	5.1	39	5.5	34	4.3	48	4.4	48	
			No	38490	3690	23669	61	14821	39	8227	21	1092	3	4.8	60	7.2	55	6.5	50	7.1	44	5.2	58	5.4	60	
			No Information Provided	100	3684	61	61	39	39	26	26	4	4.8	59	7.3	56	6.3	48	6.8	42	5.2	58	5.8	64		
<b>Gifted/Talented</b>																										
			Participants	1397	4570	119	9	1278	91	1193	85	491	35	6.8	85	10.9	84	10.8	83	10.9	68	7.5	83	7.8	87	
			Nonparticipants	41220	3634	26952	65	14268	35	7294	18	620	2	4.7	58	7.0	53	6.2	47	6.8	42	5.0	56	5.2	58	
			No Information Provided	97	3671	59	61	38	39	25	26	3	3	4.7	59	7.2	55	6.2	48	6.9	43	5.1	57	5.6	63	
<b>At-Risk</b>																										
			Yes	35393	3578	24834	70	10559	30	4537	13	151	0	4.5	56	6.7	51	5.9	45	6.5	41	4.8	54	5.1	56	
			No	7234	4093	2246	31	4988	69	3952	55	959	13	5.8	73	9.1	70	8.6	66	8.9	56	6.4	71	6.7	74	
			No Information Provided	87	3685	50	57	37	43	23	26	4	5	4.7	59	7.3	56	6.4	50	6.9	43	5.4	60	5.7	63	

\* Results for students who took the test with the Braille, American Sign Language videos accommodation, or the paper STAAR with embedded supports are not included in the reporting category results.



**STATE OF TEXAS ASSESSMENTS OF ACADEMIC READINESS**  
*Constructed Responses Summary Report*  
**ENGLISH II**  
**All Students**

STATEWIDE

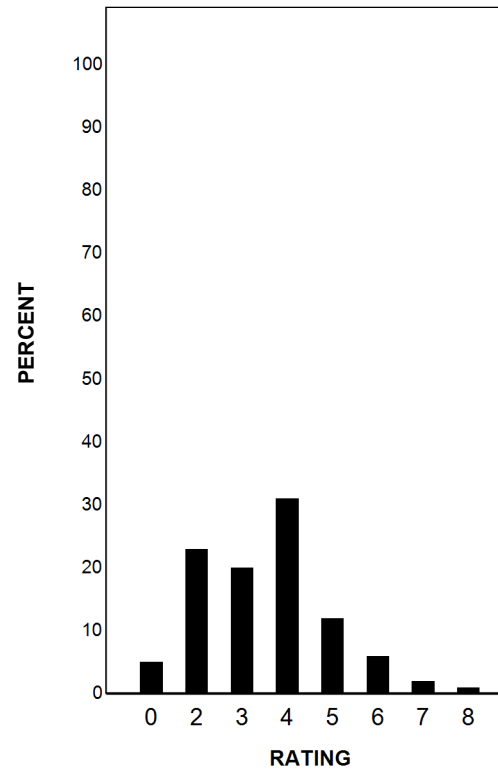
Report Date: FALL 2020  
 Date of Testing: FALL 2020

--- = No Data Reported For Fewer Than Five Students

**Written Composition Rating Summary\***

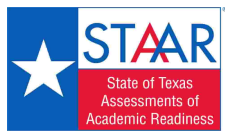
**Persuasive Composition**

Rating	#	%
0	2193	5
2	9738	23
3	8663	20
4	13350	31
5	5111	12
6	2616	6
7	714	2
8	300	1
Total	42685	100



Each composition has been scored independently by two readers. The written composition rating of 0-8 represents the summation of these scores.

\* Results for students who took the test with the Braille, American Sign Language videos accommodation, or the paper STAAR with embedded supports are not included in this report.



# STATE OF TEXAS ASSESSMENTS OF ACADEMIC READINESS

## Summary Report

### ENGLISH II

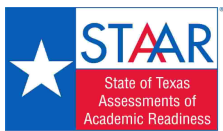
#### First-Time Tested Students

STATEWIDE

Report Date: FALL 2020  
Date of Testing: FALL 2020

Administration Summary			Number of Students Tested	Average Scale Score	Did Not Meet		Approaches		Meets		Masters		Results for Each Reporting Category*													
													1	2	3	4	5	6								
Number	Percent	Understanding/Analysis Across Genres			Understanding/Analysis of Literary Texts	Understanding/Analysis of Informational Texts	Composition	Revision	Editing	Number of Points Possible																
										8	13		13		16		9		9							
Legend					Number of Points Scored																					
--- = No Data Reported For Fewer Than Five Students					#	%	#	%	#	%	#	%	#	%	#	%	#	%	#	%	#	%				
<b>All Students</b>					16216	3846	7530	46	8686	54	6313	39	1110	7	5.2	65	8.0	61	7.4	57	7.5	47	5.7	63	5.9	66
<b>Male</b>					9440	3766	4884	52	4556	48	3214	34	488	5	5.0	63	7.6	59	7.2	55	6.8	43	5.5	61	5.6	62
<b>Female</b>					6775	3957	2645	39	4130	61	3099	46	622	9	5.4	68	8.5	65	7.8	60	8.4	52	6.0	66	6.4	71
<b>No Information Provided</b>					1	---	---	---	---	---	---	---	---	---	---	---	---	---	---	---	---	---	---	---	---	---
<b>Hispanic/Latino</b>			10777	3813	5175	48	5602	52	3988	37	533	5	5.1	64	7.9	60	7.3	56	7.4	46	5.7	63	5.8	65		
<b>American Indian or Alaska Native</b>			42	3785	21	50	21	50	16	38	1	2	5.3	66	8.0	62	7.4	57	6.7	42	5.8	65	5.9	66		
<b>Asian</b>			528	4468	101	19	427	81	388	73	191	36	6.4	80	10.3	79	10.1	78	10.6	66	6.9	77	7.2	80		
<b>Black or African American</b>			1818	3603	1173	65	645	35	380	21	35	2	4.5	57	6.9	53	6.1	47	6.2	39	4.9	54	5.3	58		
<b>Native Hawaiian or Other Pacific Islander</b>			30	3728	18	60	12	40	7	23	1	3	5.0	62	7.6	58	6.9	53	6.5	41	5.5	61	5.3	59		
<b>White</b>			2673	4013	902	34	1771	66	1384	52	319	12	5.6	70	8.8	67	8.3	64	8.2	51	6.1	68	6.6	73		
<b>Two or More Races</b>			303	3968	114	38	189	62	136	45	28	9	5.4	68	8.6	66	7.9	61	8.1	51	6.0	66	6.3	70		
<b>No Information Provided</b>			45	3718	26	58	19	42	14	31	2	4	4.9	62	7.4	57	6.7	52	7.2	45	5.5	61	5.8	64		
<b>Economically Disadvantaged</b>																										
Yes			10860	3742	5716	53	5144	47	3453	32	376	3	4.9	62	7.5	58	6.9	53	7.0	43	5.4	60	5.6	63		
No			5294	4061	1782	34	3512	66	2839	54	730	14	5.7	71	8.9	69	8.5	65	8.5	53	6.2	69	6.6	73		
No Information Provided			62	3742	32	52	30	48	21	34	4	6	4.8	60	7.5	58	6.9	53	7.3	46	5.3	59	5.8	64		
<b>Title I, Part A</b>																										
Participants			9406	3843	4352	46	5054	54	3696	39	554	6	5.2	65	8.0	61	7.5	57	7.5	47	5.7	63	5.9	65		
Nonparticipants			6751	3851	3151	47	3600	53	2594	38	552	8	5.2	65	8.0	62	7.4	57	7.4	46	5.7	63	6.0	67		
No Information Provided			59	3781	27	46	32	54	23	39	4	7	5.0	63	7.7	60	7.0	54	7.5	47	5.4	60	5.9	66		
<b>Migrant</b>																										
Yes			83	3613	53	64	30	36	20	24	3	4	4.6	58	7.0	54	6.2	48	6.1	38	5.2	58	5.1	56		
No			16065	3847	7444	46	8621	54	6267	39	1103	7	5.2	65	8.0	62	7.4	57	7.5	47	5.7	63	5.9	66		
No Information Provided			68	3807	33	49	35	51	26	38	4	6	5.1	64	7.9	61	7.1	55	7.7	48	5.6	62	6.0	67		
<b>Limited English Proficient</b>																										
Current LEP			3197	3441	2527	79	670	21	311	10	14	0	4.0	49	5.9	45	5.3	41	5.5	34	4.4	49	4.3	48		
Non-LEP (Monitored 1st Year)			100	3696	52	52	48	48	30	30	0	0	4.8	60	7.2	55	7.1	54	6.8	42	5.2	58	5.3	59		
Non-LEP (Monitored 2nd Year)			235	3917	84	36	151	64	98	42	6	3	5.6	70	8.4	65	8.1	62	8.0	50	6.3	70	6.3	70		
Non-LEP (Monitored 3rd Year)			216	3913	77	36	139	64	94	44	8	4	5.6	69	8.5	65	8.2	63	8.0	50	6.0	67	6.3	70		
Non-LEP (Monitored 4th Year)			389	4082	77	20	312	80	233	60	24	6	6.0	75	9.4	72	8.9	69	8.7	54	6.6	73	6.8	76		
Non-LEP (Post Monitoring)			603	4143	104	17	499	83	401	67	56	9	6.1	77	9.6	74	9.2	71	9.2	57	6.7	74	7.0	78		
Other Non-LEP			11401	3935	4572	40	6829	60	5118	45	998	9	5.4	68	8.4	65	7.8	60	7.9	49	6.0	66	6.3	70		
No Information Provided			75	3777	37	49	38	51	28	37	4	5	5.0	63	7.8	60	7.0	54	7.3	45	5.6	62	5.8	65		
<b>Bilingual</b>																										
Participants			122	4247	19	16	103	84	89	73	20	16	6.2	77	9.8	75	9.7	75	9.6	60	6.9	77	7.1	79		
Nonparticipants			16024	3843	7477	47	8547	53	6197	39	1086	7	5.2	65	8.0	61	7.4	57	7.5	47	5.7	63	5.9	66		
No Information Provided			70	3784	34	49	36	51	27	39	4	6	4.9	62	7.9	61	7.0	54	7.4	46	5.6	62	5.9	66		
<b>ESL</b>																										
Participants			2949	3435	2342	79	607	21	277	9	13	0	3.9	49	5.8	45	5.3	41	5.5	34	4.4	49	4.3	48		
Nonparticipants			13202	3938	5158	39	8044	61	6010	46	1093	8	5.5	68	8.5	65	7.9	61	7.9	49	6.0	67	6.3	70		
No Information Provided			65	3791	30	46	35	54	26	40	4	6	4.9	62	7.9	60	7.0	54	7.5	47	5.6	62	6.0	66		
<b>Special Education</b>																										
Yes			1670	3409	1348	81	322	19	152	9	18	1	3.9	48	5.8	45	5.1	39	4.9	31	4.3	47	4.3	47		
No			14481	3897	6149	42	8332	58	6137	42	1088	8	5.3	67	8.2	63	7.7	59	7.8	49	5.9	65	6.1	68		
No Information Provided			65	3769	33	51	32	49	24	37	4	6	5.0	63	7.7	59	6.9	53	7.4	46	5.5	61	5.8	65		
<b>Gifted/Talented</b>																										
Participants			1286	4647	56	4	1230	96	1176	91	491	38	7.0	87	11.2	86	11.2	86	11.2	70	7.7	85	8.0	89		
Nonparticipants			14866	3777	7441	50	7425	50	5114	34	616	4	5.0	63	7.7	59	7.1	55	7.1	45	5.5	61	5.8	64		
No Information Provided			64	3756	33	52	31	48	23	36	3	5	5.0	63	7.6	59	6.8	52	7.5	47	5.4	60	5.8	65		
<b>At-Risk</b>																										
Yes			11153	3642	6704	60	4449	40	2628	24	148	1	4.7	58	7.1	54	6.4	49	6.4	40	5.1	57	5.3	59		
No			5007	4301	800	16	4207	84	3664	73	958	19	6.3	79	10.0	77	9.8	75	9.8	61	6.9	77	7.3	81		
No Information Provided			56	3787	26	46	30	54	21	38	4	7	4.9	61	7.7	59	7.0	54	7.5	47	5.7	63	6.0	67		

\* Results for students who took the test with the Braille, American Sign Language videos accommodation, or the paper STAAR with embedded supports are not included in the reporting category results.



**STATE OF TEXAS ASSESSMENTS OF ACADEMIC READINESS**  
*Constructed Responses Summary Report*  
**ENGLISH II**  
**First-Time Tested Students**

STATEWIDE

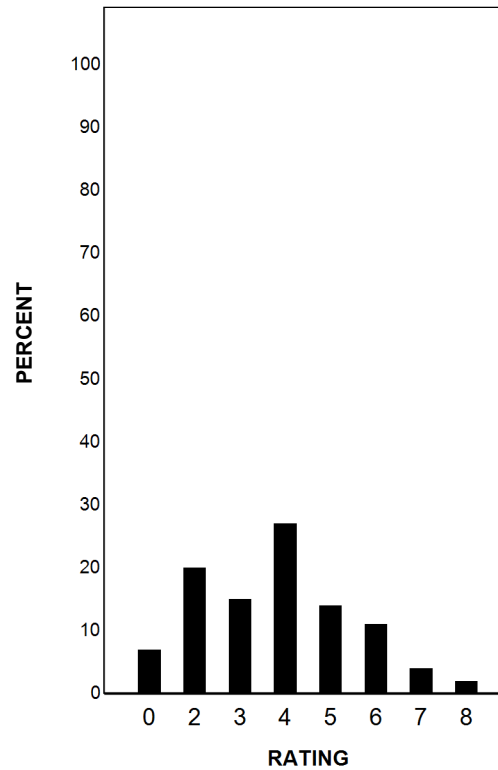
Report Date: FALL 2020  
 Date of Testing: FALL 2020

--- = No Data Reported For Fewer Than Five Students

**Written Composition Rating Summary\***

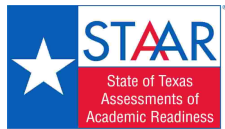
**Persuasive Composition**

Rating	#	%
0	1068	7
2	3292	20
3	2436	15
4	4360	27
5	2334	14
6	1796	11
7	637	4
8	289	2
Total	16212	100



Each composition has been scored independently by two readers. The written composition rating of 0-8 represents the summation of these scores.

\* Results for students who took the test with the Braille, American Sign Language videos accommodation, or the paper STAAR with embedded supports are not included in this report.



# STATE OF TEXAS ASSESSMENTS OF ACADEMIC READINESS

## Summary Report

### ENGLISH II

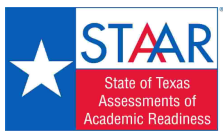
#### Retested Students

STATEWIDE

Report Date: FALL 2020  
Date of Testing: FALL 2020

Administration Summary			Number of Students Tested	Average Scale Score	Did Not Meet		Approaches		Meets		Masters		Results for Each Reporting Category*											
													1	2	3	4	5	6						
Number	Percent	Understanding/ Analysis Across Genres			Understanding/ Analysis of Literary Texts	Understanding/ Analysis of Informational Texts	Composition	Revision	Editing	Number of Points Possible						Number of Points Scored								
8	13									13	16	9	9	#	%	#	%	#	%	#	%	#	%	
Legend			--- = No Data Reported For Fewer Than Five Students																					
<b>All Students</b>	26498	71	3554	19600	74	6898	26	2199	8	4	0	4.5	56	6.5	50	5.6	43	6.6	41	4.7	52	5.0	55	
<b>Male</b>	16192		3554	11738	72	4454	28	1542	10	3	0	4.5	56	6.5	50	5.8	44	6.3	40	4.8	53	4.9	55	
<b>Female</b>	10306		3555	7862	76	2444	24	657	6	1	0	4.4	55	6.5	50	5.4	42	6.9	43	4.6	51	5.0	56	
<b>No Information Provided</b>	0		---	---	---	---	---	---	---	---	---	---	---	---	---	---	---	---	---	---	---	---	---	
<b>Hispanic/Latino</b>	17471		3544	13124	75	4347	25	1333	8	2	0	4.4	56	6.5	50	5.6	43	6.5	41	4.7	52	4.8	54	
<b>American Indian or Alaska Native</b>	84		3587	63	75	21	25	8	10	0	0	4.8	60	6.5	50	5.6	43	6.9	43	4.9	55	5.1	57	
<b>Asian</b>	579		3514	457	79	122	21	41	7	0	0	4.2	52	6.1	47	5.7	44	6.5	40	4.4	49	4.8	53	
<b>Black or African American</b>	4551		3531	3519	77	1032	23	299	7	1	0	4.4	55	6.4	49	5.5	43	6.4	40	4.5	50	5.0	56	
<b>Native Hawaiian or Other Pacific Islander</b>	47		3592	31	66	16	34	5	11	0	0	4.7	59	6.3	48	5.4	42	7.4	46	4.7	53	5.4	60	
<b>White</b>	3428		3639	2173	63	1255	37	471	14	1	0	4.7	59	7.0	54	6.0	47	7.0	44	5.1	57	5.5	61	
<b>Two or More Races</b>	308		3628	208	68	100	32	41	13	0	0	4.7	58	6.9	53	6.0	46	7.1	44	5.1	57	5.4	60	
<b>No Information Provided</b>	30		3549	25	83	5	17	1	3	0	0	4.4	55	6.6	50	5.2	40	6.0	38	5.0	56	5.8	64	
<b>Economically Disadvantaged</b>		Yes	18800	3538	14287	76	4513	24	1348	7	0	4.4	55	6.4	49	5.5	43	6.5	41	4.7	52	4.9	54	
		No	7666	3595	5287	69	2379	31	849	11	4	4.6	58	6.8	52	5.9	45	6.8	42	4.9	54	5.1	57	
		No Information Provided	32	3523	26	81	6	19	2	6	0	4.2	53	6.4	50	5.3	41	5.7	36	4.8	53	5.4	60	
<b>Title I, Part A</b>		Participants	14900	3529	11427	77	3473	23	1022	7	2	4.4	55	6.4	49	5.5	42	6.4	40	4.6	51	4.9	54	
		Nonparticipants	11569	3587	8150	70	3419	30	1175	10	2	4.6	57	6.7	52	5.8	45	6.7	42	4.8	54	5.1	57	
		No Information Provided	29	3497	23	79	6	21	2	7	0	4.2	53	6.0	46	5.1	39	5.7	36	4.6	51	5.3	59	
<b>Migrant</b>		Yes	193	3554	142	74	51	26	18	9	0	4.2	53	6.7	52	5.7	44	6.4	40	4.7	53	4.9	54	
		No	26270	3554	19430	74	6840	26	2179	8	4	4.5	56	6.5	50	5.6	43	6.6	41	4.7	52	5.0	55	
		No Information Provided	35	3535	28	80	7	20	2	6	0	4.3	53	6.6	51	5.2	40	5.9	37	4.8	53	5.5	61	
<b>Limited English Proficient</b>		Current LEP	9272	3466	7742	83	1530	17	377	4	1	4.1	51	6.0	46	5.2	40	6.1	38	4.4	49	4.4	49	
		Non-LEP (Monitored 1st Year)	155	3523	118	76	37	24	9	6	0	4.4	55	6.6	51	5.8	45	6.1	38	4.8	53	4.7	52	
		Non-LEP (Monitored 2nd Year)	203	3647	139	68	64	32	24	12	0	4.9	61	7.1	54	6.1	47	7.2	45	5.1	56	5.4	60	
		Non-LEP (Monitored 3rd Year)	241	3683	141	59	100	41	34	14	0	5.0	63	7.3	56	6.3	48	7.4	46	5.3	58	5.5	61	
		Non-LEP (Monitored 4th Year)	451	3675	273	61	178	39	55	12	0	4.9	61	7.3	56	6.4	49	7.4	46	5.3	59	5.4	60	
		Non-LEP (Post Monitoring)	182	3744	93	51	89	49	42	23	0	5.3	66	7.9	60	6.9	53	7.4	46	5.5	62	5.7	64	
		Other Non-LEP	15956	3597	11062	69	4894	31	1657	10	3	4.6	58	6.8	52	5.9	45	6.8	42	4.9	54	5.3	58	
		No Information Provided	38	3469	32	84	6	16	1	3	0	4.0	50	6.4	49	5.0	38	5.5	34	4.8	53	5.1	57	
<b>Bilingual</b>		Participants	30	3602	22	73	8	27	4	13	0	4.7	59	6.9	53	5.9	45	6.7	42	4.8	53	5.3	59	
		Nonparticipants	26421	3555	19539	74	6882	26	2192	8	4	4.5	56	6.5	50	5.6	43	6.6	41	4.7	52	5.0	55	
		No Information Provided	47	3461	39	83	8	17	3	6	0	3.9	48	6.2	47	5.2	40	5.4	34	4.6	51	5.0	56	
<b>ESL</b>		Participants	9084	3458	7632	84	1452	16	356	4	0	4.1	51	5.9	45	5.2	40	6.1	38	4.3	48	4.4	48	
		Nonparticipants	17371	3605	11932	69	5439	31	1841	11	4	4.7	59	6.8	53	5.9	45	6.8	43	4.9	55	5.3	59	
		No Information Provided	43	3457	36	84	7	16	2	5	0	3.9	48	6.1	47	5.3	40	5.2	33	4.7	52	5.0	56	
<b>Special Education</b>		Yes	2454	3449	2052	84	402	16	107	4	0	4.1	51	6.1	47	5.1	39	5.8	36	4.3	48	4.4	49	
		No	24009	3565	17520	73	6489	27	2090	9	4	4.5	56	6.6	51	5.7	44	6.6	42	4.8	53	5.0	56	
		No Information Provided	35	3524	28	80	7	20	2	6	0	4.3	54	6.4	49	5.2	40	5.6	35	4.7	53	5.6	62	
<b>Gifted/Talented</b>		Participants	111	3680	63	57	48	43	17	15	0	5.0	62	7.3	56	6.1	47	7.2	45	5.4	60	5.5	61	
		Nonparticipants	26354	3554	19511	74	6843	26	2180	8	4	4.5	56	6.5	50	5.6	43	6.6	41	4.7	52	5.0	55	
		No Information Provided	33	3508	26	79	7	21	2	6	0	4.1	51	6.4	49	5.1	39	5.8	36	4.6	51	5.3	59	
<b>At-Risk</b>		Yes	24240	3548	18130	75	6110	25	1909	8	3	4.4	56	6.5	50	5.6	43	6.5	41	4.7	52	4.9	55	
		No	2227	3627	1446	65	781	35	288	13	1	4.7	59	7.0	54	6.1	47	7.0	44	5.0	56	5.4	60	
		No Information Provided	31	3502	24	77	7	23	2	6	0	4.3	53	6.5	50	5.4	42	5.7	36	4.8	53	5.1	57	

\* Results for students who took the test with the Braille, American Sign Language videos accommodation, or the paper STAAR with embedded supports are not included in the reporting category results.



# STATE OF TEXAS ASSESSMENTS OF ACADEMIC READINESS

## Constructed Responses Summary Report

### ENGLISH II

#### Retested Students

STATEWIDE

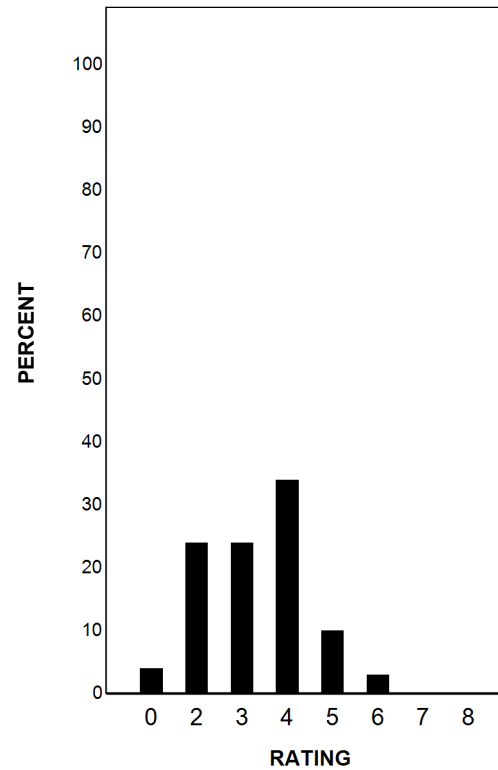
Report Date: FALL 2020  
Date of Testing: FALL 2020

--- = No Data Reported For Fewer Than Five Students

### Written Composition Rating Summary\*

#### Persuasive Composition

Rating	#	%
0	1125	4
2	6446	24
3	6227	24
4	8990	34
5	2777	10
6	820	3
7	77	0
8	11	0
Total	26473	100



Each composition has been scored independently by two readers. The written composition rating of 0-8 represents the summation of these scores.

\* Results for students who took the test with the Braille, American Sign Language videos accommodation, or the paper STAAR with embedded supports are not included in this report.