

STATE OF TEXAS ASSESSMENTS OF ACADEMIC READINESS

Summary Report

ENGLISH II

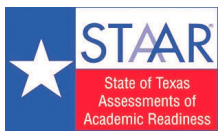
All Students

STATEWIDE

Report Date: SUMMER 2019
Date of Testing: SUMMER 2019

Administration Summary			Number of Students Tested	Average Scale Score	Did Not Meet		Approaches		Meets		Masters		Results for Each Reporting Category*															
					#	%	#	%	#	%	#	%	1		2		3		4		5		6					
Number	Percent													Understanding/ Analysis Across Genres		Understanding/ Analysis of Literary Texts		Understanding/ Analysis of Informational Texts		Composition		Revision		Editing				
Legend			--- = No Data Reported For Fewer Than Five Students																									
			Number of Points Possible		Number of Points Scored																							
			8		13				13				16				9		9									
			#	%	#	%	#	%	#	%	#	%	#	%	#	%	#	%	#	%	#	%	#	%	#	%		
All Students			49260	3522	36864	75	12396	25	4194	9	136	0	4.1	51	6.4	49	5.7	44	6.4	40	4.7	52	4.9	55				
Male			29846	3495	22696	76	7150	24	2452	8	59	0	4.0	50	6.1	47	5.7	44	6.1	38	4.6	52	4.8	53				
Female			19414	3564	14168	73	5246	27	1742	9	77	0	4.2	53	6.7	52	5.7	44	6.9	43	4.7	53	5.2	57				
No Information Provided			0	---	---	---	---	---	---	---	---	---	---	---	---	---	---	---	---	---	---	---	---	---	---	---		
Hispanic/Latino			30957	3504	23816	77	7141	23	2248	7	37	0	4.1	51	6.3	48	5.6	43	6.4	40	4.6	52	4.8	53				
American Indian or Alaska Native			173	3564	127	73	46	27	12	7	0	0	4.3	54	6.6	51	5.8	45	6.6	42	4.9	54	5.3	59				
Asian			944	3569	676	72	268	28	122	13	18	2	4.1	51	6.4	49	6.2	47	6.9	43	4.6	51	4.9	55				
Black or African American			8173	3494	6343	78	1830	22	507	6	4	0	4.0	50	6.3	49	5.6	43	6.2	39	4.5	50	4.9	55				
Native Hawaiian or Other Pacific Islander			74	3502	56	76	18	24	4	5	0	0	4.1	51	6.2	48	5.6	43	6.2	39	4.5	50	4.8	53				
White			8248	3601	5406	66	2842	34	1195	14	65	1	4.4	55	6.7	52	6.3	48	6.7	42	5.0	56	5.3	59				
Two or More Races			615	3613	391	64	224	36	87	14	7	1	4.5	56	7.0	54	6.2	48	6.7	42	5.0	56	5.3	59				
No Information Provided			76	3708	49	64	27	36	19	25	5	7	4.6	57	7.0	54	6.8	52	7.1	45	5.3	59	5.4	60				
Economically Disadvantaged	Yes		35751	3492	27872	78	7879	22	2406	7	30	0	4.0	50	6.2	48	5.5	43	6.3	39	4.6	51	4.8	53				
	No		13414	3601	8929	67	4485	33	1767	13	102	1	4.4	55	6.8	52	6.2	48	6.8	42	5.0	56	5.3	59				
	No Information Provided		95	3664	63	66	32	34	21	22	4	4	4.4	55	7.1	55	6.5	50	6.8	43	4.9	55	5.2	57				
Title I, Part A	Participants		28297	3496	21839	77	6458	23	1973	7	39	0	4.0	50	6.2	48	5.6	43	6.3	40	4.6	51	4.8	54				
	Nonparticipants		20852	3556	14956	72	5896	28	2196	11	93	0	4.2	53	6.6	50	5.9	46	6.5	41	4.8	53	5.1	56				
	No Information Provided		111	3669	69	62	42	38	25	23	4	4	4.4	55	7.2	55	6.4	49	7.1	44	5.0	55	5.2	58				
Migrant	Yes		371	3465	305	82	66	18	17	5	0	0	3.9	48	6.0	46	5.4	42	6.0	38	4.6	51	4.8	53				
	No		48749	3522	36459	75	12290	25	4154	9	132	0	4.1	51	6.4	49	5.7	44	6.4	40	4.7	52	4.9	55				
	No Information Provided		140	3581	100	71	40	29	23	16	4	3	4.2	52	6.7	51	6.0	46	6.4	40	4.7	53	4.9	54				
Limited English Proficient	Current LEP		14462	3402	12635	87	1827	13	374	3	1	0	3.7	46	5.6	43	5.1	39	5.8	37	4.2	46	4.3	47				
	Non-LEP (Monitored 1st Year)		454	3555	314	69	140	31	48	11	0	0	4.2	52	6.6	51	6.0	46	6.6	41	5.0	55	5.0	56				
	Non-LEP (Monitored 2nd Year)		1207	3669	738	61	469	39	163	14	0	0	4.6	58	7.5	58	6.6	51	7.4	46	5.3	59	5.4	61				
	Non-LEP (Monitored 3rd Year)		467	3662	278	60	189	40	65	14	0	0	4.7	59	7.4	57	6.5	50	7.3	46	5.2	57	5.5	61				
	Non-LEP (Monitored 4th Year)		431	3703	240	56	191	44	67	16	1	0	4.7	59	7.6	58	6.7	52	7.4	46	5.5	62	5.7	64				
	Other Non-LEP		32105	3565	22568	70	9537	30	3453	11	130	0	4.3	53	6.7	51	5.9	46	6.6	41	4.9	54	5.2	58				
	No Information Provided		134	3630	91	68	43	32	24	18	4	3	4.4	56	6.8	53	6.3	48	6.7	42	5.0	55	5.1	56				
Bilingual	Participants		54	3557	38	70	16	30	9	17	0	0	4.0	50	6.9	53	5.9	45	6.6	41	4.9	54	5.1	57				
	Nonparticipants		49073	3522	36734	75	12339	25	4161	8	132	0	4.1	51	6.4	49	5.7	44	6.4	40	4.7	52	4.9	55				
	No Information Provided		133	3622	92	69	41	31	24	18	4	3	4.3	54	6.9	53	6.3	48	6.7	42	4.9	54	5.0	56				
ESL	Participants		14052	3399	12290	87	1762	13	360	3	1	0	3.7	46	5.5	43	5.1	39	5.8	36	4.2	46	4.2	47				
	Nonparticipants		35079	3571	24484	70	10595	30	3811	11	131	0	4.3	54	6.7	52	6.0	46	6.7	42	4.9	54	5.2	58				
	No Information Provided		129	3623	90	70	39	30	23	18	4	3	4.3	54	6.9	53	6.3	48	6.7	42	4.9	54	5.0	56				
Special Education	Yes		8449	3389	7379	87	1070	13	250	3	2	0	3.7	46	5.7	44	4.9	38	5.5	34	4.1	46	4.2	47				
	No		40701	3549	29413	72	11288	28	3923	10	130	0	4.2	52	6.5	50	5.9	45	6.6	41	4.8	53	5.1	56				
	No Information Provided		110	3639	72	65	38	35	21	19	4	4	4.3	54	7.1	55	6.3	49	6.8	43	4.8	54	4.9	55				
Gifted/Talented	Participants		349	4074	114	33	235	67	166	48	51	15	5.7	71	8.9	68	8.6	66	8.9	55	6.4	71	6.9	77				
	Nonparticipants		48788	3518	36668	75	12120	25	4004	8	81	0	4.1	51	6.4	49	5.7	44	6.4	40	4.7	52	4.9	55				
	No Information Provided		123	3637	82	67	41	33	24	20	4	3	4.3	54	7.1	55	6.3	49	6.7	42	4.9	55	5.0	55				
At-Risk	Yes		42918	3485	33814	79	9104	21	2533	6	18	0	4.0	50	6.2	47	5.5	42	6.2	39	4.5	51	4.8	53				
	No		6253	3771	2998	48	3255	52	1636	26	114	2	4.9	62	7.9	61	7.3	56	7.6	47	5.6	62	5.9	66				
	No Information Provided		89	3733	52	58	37	42	25	28	4	4	4.7	58	7.5	58	6.9	53	7.3	46	5.2	58	5.4	60				
Career/Technical Education	Participants		39250	3530	29183	74	10067	26	3365	9	80	0	4.1	52	6.4	49	5.8	44	6.5	40	4.7	52	5.0	55				
	Nonparticipants		9912	3490	7610	77	2302	23	814	8	52	1	4.0	50	6.2	47	5.6	43	6.2	39	4.5	50	4.8	53				
	No Information Provided		98	3583	71	72	27	28	15	15	4	4	4.2	52	6.5	50	6.0	46	6.5	41	4.7	52	4.9	55				

* Results for students who took the test with the Braille, American Sign Language videos accommodation, or the paper STAAR with embedded supports are not included in the reporting category results.



STATE OF TEXAS ASSESSMENTS OF ACADEMIC READINESS
Constructed Responses Summary Report
ENGLISH II
All Students

STATEWIDE

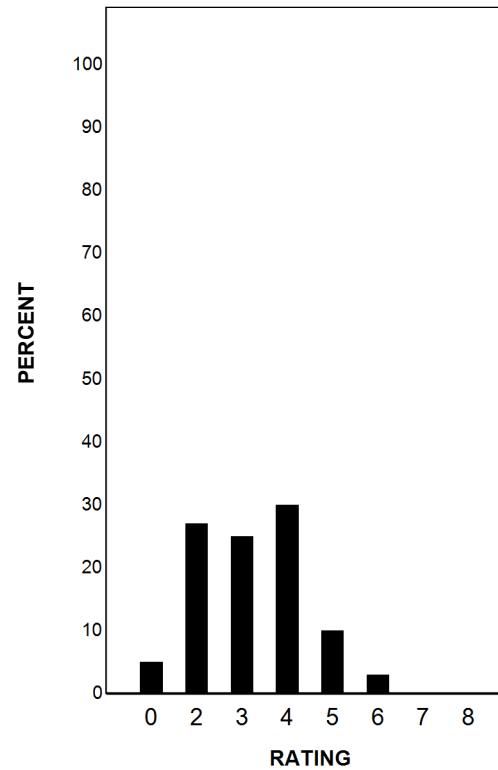
Report Date: SUMMER 2019
Date of Testing: SUMMER 2019

--- = No Data Reported For Fewer Than Five Students

Written Composition Rating Summary*

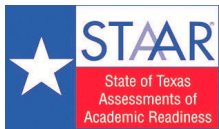
Persuasive Composition

Rating	#	%
0	2336	5
2	13060	27
3	12257	25
4	14896	30
5	4959	10
6	1461	3
7	220	0
8	42	0
Total	49231	100



Each composition has been scored independently by two readers. The written composition rating of 0-8 represents the summation of these scores.

* Results for students who took the test with the Braille, American Sign Language videos accommodation, or the paper STAAR with embedded supports are not included in this report.



STATE OF TEXAS ASSESSMENTS OF ACADEMIC READINESS

Summary Report

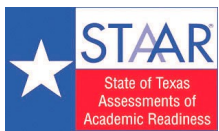
ENGLISH II

First-Time Tested Students

STATEWIDE

Report Date: SUMMER 2019
Date of Testing: SUMMER 2019

Administration Summary			Number of Students Tested	Average Scale Score	Did Not Meet		Approaches		Meets		Masters		Results for Each Reporting Category*													
													1		2		3		4		5		6			
Number	Percent											Understanding/ Analysis Across Genres		Understanding/ Analysis of Literary Texts		Understanding/ Analysis of Informational Texts		Composition		Revision		Editing				
Students Tested			1559	94																						
Students Not Tested																										
Absent			0	0																						
Other			100	6																						
Total Documents Submitted			1659	100																						
Legend			--- = No Data Reported For Fewer Than Five Students																							
			Number of Points Possible		8		13		13		16		9		9											
			Number of Points Scored																							
			#	%	#	%	#	%	#	%	#	%	#	%	#	%	#	%	#	%	#	%	#	%		
All Students			1559	3913	613	39	946	61	693	44	126	8	5.2	66	8.3	64	8.0	62	8.0	50	6.0	67	6.3	70		
Male			733	3799	342	47	391	53	281	38	53	7	5.0	63	7.7	59	7.6	59	7.3	46	5.6	63	5.9	66		
Female			826	4015	271	33	555	67	412	50	73	9	5.5	68	8.9	68	8.4	64	8.6	54	6.3	70	6.6	73		
No Information Provided			0	---	---	---	---	---	---	---	---	---	---	---	---	---	---	---	---	---	---	---	---	---		
Hispanic/Latino			723	3799	335	46	388	54	257	36	33	5	5.0	62	7.8	60	7.4	57	7.5	47	5.7	63	5.9	66		
American Indian or Alaska Native			8	3751	3	38	5	63	2	25	0	0	4.5	66	6.4	49	7.4	57	8.0	50	7.3	81	5.8	64		
Asian			49	4332	14	29	35	71	33	67	17	35	5.7	71	9.6	74	9.3	72	10.0	62	6.8	76	7.0	78		
Black or African American			208	3678	105	50	103	50	63	30	4	2	4.6	58	7.5	58	6.9	53	7.1	44	5.3	59	5.5	62		
Native Hawaiian or Other Pacific Islander			3	---	---	---	---	---	---	---	---	---	---	---	---	---	---	---	---	---	---	---	---	---		
White			486	4123	123	25	363	75	291	60	60	12	5.9	73	9.2	71	9.2	71	8.9	55	6.6	73	7.0	78		
Two or More Races			47	4124	14	30	33	70	29	62	7	15	5.4	68	9.1	70	9.2	71	8.4	52	6.6	73	7.0	78		
No Information Provided			35	3963	17	49	18	51	17	49	5	14	5.2	65	8.3	64	7.7	60	8.3	52	5.9	65	6.1	67		
Economically Disadvantaged			862	3698	445	52	417	48	249	29	26	3	4.7	59	7.4	57	6.9	53	7.0	44	5.4	60	5.6	62		
Yes			862	3698	445	52	417	48	249	29	26	3	4.7	59	7.4	57	6.9	53	7.0	44	5.4	60	5.6	62		
No			655	4195	148	23	507	77	425	65	96	15	6.0	75	9.6	74	9.4	72	9.3	58	6.8	75	7.2	80		
No Information Provided			42	3937	20	48	22	52	19	45	4	10	5.2	65	8.4	64	7.7	60	8.4	53	5.9	65	5.9	66		
Title I, Part A			652	3766	299	46	353	54	231	35	34	5	4.9	61	7.7	59	7.3	56	7.3	46	5.7	63	5.8	65		
Participants			652	3766	299	46	353	54	231	35	34	5	4.9	61	7.7	59	7.3	56	7.3	46	5.7	63	5.8	65		
Nonparticipants			862	4024	293	34	569	66	440	51	88	10	5.5	69	8.8	68	8.6	66	8.5	53	6.2	69	6.6	74		
No Information Provided			45	3930	21	47	24	53	22	49	4	9	5.3	66	8.4	64	7.6	58	8.3	52	6.1	67	5.9	65		
Migrant			5	3555	3	60	2	40	2	40	0	0	4.6	58	6.4	49	8.0	62	4.8	30	4.0	44	5.2	58		
Yes			5	3555	3	60	2	40	2	40	0	0	4.6	58	6.4	49	8.0	62	4.8	30	4.0	44	5.2	58		
No			1505	3916	584	39	921	61	671	45	122	8	5.2	66	8.3	64	8.0	62	8.0	50	6.0	67	6.3	70		
No Information Provided			49	3868	26	53	23	47	20	41	4	8	5.2	66	8.0	61	7.3	56	7.8	49	5.8	65	5.7	63		
Limited English Proficient			143	3417	114	80	29	20	8	6	1	1	3.8	47	5.6	43	5.3	41	5.5	34	4.4	49	4.2	47		
Current LEP			143	3417	114	80	29	20	8	6	1	1	3.8	47	5.6	43	5.3	41	5.5	34	4.4	49	4.2	47		
Non-LEP (Monitored 1st Year)			27	3670	15	56	12	44	5	19	0	0	4.3	54	7.3	56	6.6	51	7.3	45	5.3	59	5.7	64		
Non-LEP (Monitored 2nd Year)			23	3664	13	57	10	43	6	26	0	0	4.7	59	7.6	58	6.0	46	7.6	47	5.1	57	5.3	58		
Non-LEP (Monitored 3rd Year)			8	3950	2	25	6	75	5	63	0	0	5.9	73	8.5	65	8.1	63	9.0	56	6.9	76	6.1	68		
Non-LEP (Monitored 4th Year)			17	3981	5	29	12	71	6	35	1	6	5.7	71	8.9	69	8.2	63	9.2	57	6.2	69	6.0	67		
Other Non-LEP			1292	3978	439	34	853	66	642	50	120	9	5.4	68	8.7	67	8.4	65	8.3	52	6.2	69	6.6	73		
No Information Provided			49	3883	25	51	24	49	21	43	4	8	5.3	67	8.0	61	7.4	57	7.8	49	5.9	65	5.7	64		
Bilingual			0	---	---	---	---	---	---	---	---	---	---	---	---	---	---	---	---	---	---	---	---	---		
Participants			0	---	---	---	---	---	---	---	---	---	---	---	---	---	---	---	---	---	---	---	---	---		
Nonparticipants			1512	3914	589	39	923	61	672	44	122	8	5.2	66	8.3	64	8.0	62	8.0	50	6.0	67	6.3	70		
No Information Provided			47	3905	24	51	23	49	21	45	4	9	5.2	65	8.3	64	7.6	58	8.0	50	6.0	66	5.8	65		
ESL			155	3430	121	78	34	22	10	6	1	1	3.8	48	5.7	44	5.4	41	5.6	35	4.4	49	4.3	48		
Participants			155	3430	121	78	34	22	10	6	1	1	3.8	48	5.7	44	5.4	41	5.6	35	4.4	49	4.3	48		
Nonparticipants			1357	3970	467	34	890	66	663	49	121	9	5.4	68	8.6	66	8.3	64	8.3	52	6.2	69	6.5	72		
No Information Provided			47	3886	25	53	22	47	20	43	4	9	5.2	65	8.2	63	7.5	57	7.8	49	5.9	65	5.7	63		
Special Education			148	3385	113	76	35	24	17	11	2	1	3.7	46	5.7	44	5.5	42	5.0	31	4.2	47	4.2	47		
Yes			148	3385	113	76	35	24	17	11	2	1	3.7	46	5.7	44	5.5	42	5.0	31	4.2	47	4.2	47		
No			1369	3970	480	35	889	65	657	48	120	9	5.4	68	8.6	66	8.3	64	8.3	52	6.2	69	6.5	72		
No Information Provided			42	3935	20	48	22	52	19	45	4	10	5.3	67	8.4	64	7.7	60	8.3	52	5.8	65	5.8	65		
Gifted/Talented			109	4752	2	2	107	98	104	95	49	45	7.1	89	11.4	88	11.7	90	11.9	74	7.9	88	8.4	93		
Participants			109	4752	2	2	107	98	104	95	49	45	7.1	89	11.4	88	11.7	90	11.9	74	7.9	88	8.4	93		
Nonparticipants			1403	3849	587	42	816	58	568	40	73	5	5.1	64	8.1	62	7.7	59	7.7	48	5.8	65	6.1	68		
No Information Provided			47	3902	24	51	23	49	21	45	4	9	5.2	65	8.3	64	7.6	58	7.9	49	5.9	66	5.7	63		
At-Risk			887	3624	510	57	377	43	200	23	13	1	4.5	56	7.0	54	6.5	50	6.6	41	5.3	58	5.4	60		
Yes			887	3624	510	57	377	43	200	23	13	1	4.5	56	7.0	54	6.5	50	6.6	41	5.3	58	5.4	60		
No			628	4320	84	13	544	87	471	75	109	17	6.3	79	10.2	79	10.1	78	9.9	62	7.0	78	7.5	83		
No Information Provided			44	3956	19	43	25	57	22	50	4	9	5.3	66	8.6	66	7.8	60	8.5	53	6.0	66	6.0	67		
Career/Technical Education			1093	3925	406	37	687	63	495	45	71	6	5.3	66	8.4	65	8.1	63	8.1	51	6.0	67	6.3	70		
Participants			1093	3925	406	37	687	63	495	45	71	6	5.3	66												



STATE OF TEXAS ASSESSMENTS OF ACADEMIC READINESS
Constructed Responses Summary Report
ENGLISH II
First-Time Tested Students

STATEWIDE

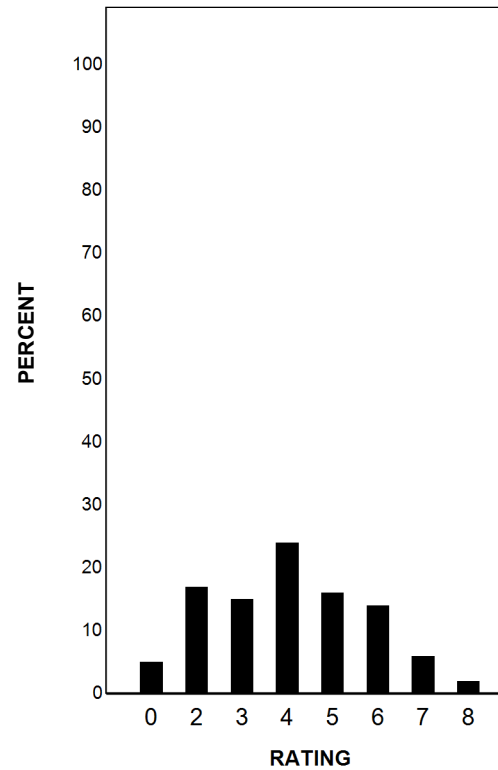
Report Date: SUMMER 2019
Date of Testing: SUMMER 2019

--- = No Data Reported For Fewer Than Five Students

Written Composition Rating Summary*

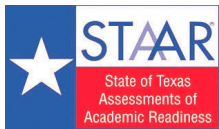
Persuasive Composition

Rating	#	%
0	85	5
2	264	17
3	227	15
4	381	24
5	254	16
6	224	14
7	88	6
8	35	2
Total	1558	100



Each composition has been scored independently by two readers. The written composition rating of 0-8 represents the summation of these scores.

* Results for students who took the test with the Braille, American Sign Language videos accommodation, or the paper STAAR with embedded supports are not included in this report.



STATE OF TEXAS ASSESSMENTS OF ACADEMIC READINESS

Summary Report

ENGLISH II

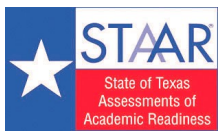
Retested Students

STATEWIDE

Report Date: SUMMER 2019
Date of Testing: SUMMER 2019

Administration Summary			Number of Students Tested	Average Scale Score	Did Not Meet		Approaches		Meets		Masters		Results for Each Reporting Category*													
					#	%	#	%	#	%	#	%	1		2		3		4		5		6			
Number	Percent													Understanding/ Analysis Across Genres		Understanding/ Analysis of Literary Texts		Understanding/ Analysis of Informational Texts		Composition		Revision		Editing		
Legend			--- = No Data Reported For Fewer Than Five Students																							
			Number of Points Possible		Number of Points Scored																					
			8		13				13				16				9		9							
			#	%	#	%	#	%	#	%	#	%	#	%	#	%	#	%	#	%	#	%	#	%	#	%
All Students			47701	3509	36251	76	11450	24	3501	7	10	0	4.1	51	6.3	49	5.7	43	6.4	40	4.6	52	4.9	54		
Male			29113	3487	22354	77	6759	23	2171	7	6	0	4.0	50	6.1	47	5.7	44	6.1	38	4.6	51	4.8	53		
Female			18588	3544	13897	75	4691	25	1330	7	4	0	4.2	52	6.6	51	5.6	43	6.8	43	4.7	52	5.1	57		
No Information Provided			0	---	---	---	---	---	---	---	---	---	---	---	---	---	---	---	---	---	---	---	---	---	---	---
Hispanic/Latino			30234	3497	23481	78	6753	22	1991	7	4	0	4.0	50	6.2	48	5.5	43	6.3	40	4.6	51	4.8	53		
American Indian or Alaska Native			165	3555	124	75	41	25	10	6	0	0	4.3	54	6.7	51	5.8	44	6.6	41	4.8	53	5.2	58		
Asian			895	3527	662	74	233	26	89	10	1	0	4.0	50	6.2	48	6.0	46	6.7	42	4.5	50	4.8	54		
Black or African American			7965	3489	6238	78	1727	22	444	6	0	0	4.0	50	6.3	48	5.6	43	6.2	39	4.4	49	4.9	55		
Native Hawaiian or Other Pacific Islander			71	3500	54	76	17	24	3	4	0	0	4.1	51	6.2	48	5.5	43	6.2	39	4.5	50	4.7	53		
White			7762	3569	5283	68	2479	32	904	12	5	0	4.3	53	6.6	51	6.1	47	6.5	41	4.9	55	5.2	58		
Two or More Races			568	3570	377	66	191	34	58	10	0	0	4.4	55	6.8	52	6.0	46	6.5	41	4.9	54	5.2	58		
No Information Provided			41	3490	32	78	9	22	2	5	0	0	4.0	50	5.9	46	5.9	45	6.1	38	4.7	53	4.8	53		
Economically Disadvantaged	Yes		34889	3487	27427	79	7462	21	2157	6	4	0	4.0	50	6.2	48	5.5	42	6.3	39	4.5	50	4.8	53		
	No		12759	3571	8781	69	3978	31	1342	11	6	0	4.3	54	6.6	51	6.0	46	6.6	41	4.9	55	5.2	58		
	No Information Provided		53	3448	43	81	10	19	2	4	0	0	3.8	47	6.1	47	5.6	43	5.5	34	4.2	47	4.5	51		
Title I, Part A	Participants		27645	3490	21540	78	6105	22	1742	6	5	0	4.0	50	6.2	48	5.5	43	6.3	39	4.6	51	4.8	53		
	Nonparticipants		19990	3535	14663	73	5327	27	1756	9	5	0	4.2	52	6.5	50	5.8	45	6.4	40	4.7	53	5.0	56		
	No Information Provided		66	3492	48	73	18	27	3	5	0	0	3.8	48	6.4	49	5.6	43	6.3	39	4.3	47	4.7	52		
Migrant	Yes		366	3464	302	83	64	17	15	4	0	0	3.9	48	6.0	46	5.4	42	6.1	38	4.6	51	4.8	53		
	No		47244	3510	35875	76	11369	24	3483	7	10	0	4.1	51	6.3	49	5.7	43	6.4	40	4.6	52	4.9	54		
	No Information Provided		91	3426	74	81	17	19	3	3	0	0	3.6	45	5.9	46	5.4	41	5.6	35	4.2	46	4.4	49		
Limited English Proficient	Current LEP		14319	3402	12521	87	1798	13	366	3	0	0	3.7	46	5.6	43	5.1	39	5.8	37	4.2	46	4.3	47		
	Non-LEP (Monitored 1st Year)		427	3547	299	70	128	30	43	10	0	0	4.1	52	6.5	50	5.9	46	6.5	41	4.9	55	5.0	55		
	Non-LEP (Monitored 2nd Year)		1184	3669	725	61	459	39	157	13	0	0	4.6	58	7.5	57	6.6	51	7.4	46	5.3	59	5.4	61		
	Non-LEP (Monitored 3rd Year)		459	3657	276	60	183	40	60	13	0	0	4.7	59	7.4	57	6.5	50	7.3	46	5.1	57	5.5	61		
	Non-LEP (Monitored 4th Year)		414	3692	235	57	179	43	61	15	0	0	4.7	59	7.5	58	6.7	51	7.3	46	5.5	61	5.7	64		
	Other Non-LEP		30813	3548	22129	72	8684	28	2811	9	10	0	4.2	53	6.6	51	5.8	45	6.5	41	4.8	53	5.1	57		
	No Information Provided		85	3484	66	78	19	22	3	4	0	0	3.9	49	6.2	48	5.6	43	6.0	37	4.5	50	4.7	52		
Bilingual	Participants		54	3557	38	70	16	30	9	17	0	0	4.0	50	6.9	53	5.9	45	6.6	41	4.9	54	5.1	57		
	Nonparticipants		47561	3509	36145	76	11416	24	3489	7	10	0	4.1	51	6.3	49	5.7	43	6.4	40	4.6	52	4.9	54		
	No Information Provided		86	3467	68	79	18	21	3	3	0	0	3.8	48	6.1	47	5.5	42	6.0	38	4.3	48	4.6	51		
ESL	Participants		13897	3399	12169	88	1728	12	350	3	0	0	3.7	46	5.5	43	5.1	39	5.8	36	4.2	46	4.2	47		
	Nonparticipants		33722	3554	24017	71	9705	29	3148	9	10	0	4.2	53	6.6	51	5.9	45	6.6	41	4.8	54	5.1	57		
	No Information Provided		82	3472	65	79	17	21	3	4	0	0	3.9	48	6.1	47	5.6	43	6.0	38	4.3	48	4.6	51		
Special Education	Yes		8301	3389	7266	88	1035	12	233	3	0	0	3.7	46	5.7	44	4.9	38	5.5	34	4.1	46	4.2	47		
	No		39332	3534	28933	74	10399	26	3266	8	10	0	4.2	52	6.4	50	5.8	45	6.5	41	4.7	53	5.0	56		
	No Information Provided		68	3456	52	76	16	24	2	3	0	0	3.7	46	6.4	49	5.5	42	5.9	37	4.2	47	4.4	49		
Gifted/Talented	Participants		240	3766	112	47	128	53	62	26	2	1	5.0	63	7.7	60	7.1	55	7.5	47	5.7	64	6.2	69		
	Nonparticipants		47385	3508	36081	76	11304	24	3436	7	8	0	4.1	51	6.3	49	5.6	43	6.4	40	4.6	51	4.9	54		
	No Information Provided		76	3474	58	76	18	24	3	4	0	0	3.8	47	6.4	49	5.6	43	6.0	37	4.3	48	4.6	51		
At-Risk	Yes		42031	3482	33304	79	8727	21	2333	6	5	0	4.0	50	6.1	47	5.5	42	6.2	39	4.5	50	4.8	53		
	No		5625	3709	2914	52	2711	48	1165	21	5	0	4.8	60	7.6	58	6.9	53	7.3	46	5.4	60	5.8	64		
	No Information Provided		45	3514	33	73	12	27	3	7	0	0	4.1	51	6.5	50	5.9	46	6.1	38	4.5	50	4.8	53		
Career/Technical Education	Participants		38157	3518	28777	75	9380	25	2870	8	9	0	4.1	51	6.4	49	5.7	44	6.4	40	4.7	52	4.9	55		
	Nonparticipants		9484	3472	7424	78	2060	22	631	7	1	0	3.9	49	6.1	47	5.5	42	6.2	39	4.5	50	4.7	53		
	No Information Provided		60	3400	50	83	10	17	0	0	0	0	3.5	44	5.7	43	5.2	40	5.7	36	4.0	45	4.3	48		

* Results for students who took the test with the Braille, American Sign Language videos accommodation, or the paper STAAR with embedded supports are not included in the reporting category results.



STATE OF TEXAS ASSESSMENTS OF ACADEMIC READINESS
Constructed Responses Summary Report
ENGLISH II
Retested Students

STATEWIDE

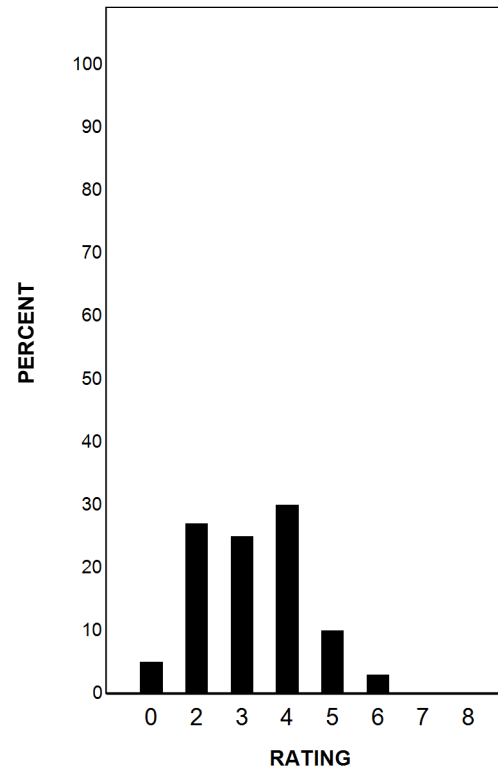
Report Date: SUMMER 2019
Date of Testing: SUMMER 2019

--- = No Data Reported For Fewer Than Five Students

Written Composition Rating Summary*

Persuasive Composition

Rating	#	%
0	2251	5
2	12796	27
3	12030	25
4	14515	30
5	4705	10
6	1237	3
7	132	0
8	7	0
Total	47673	100



Each composition has been scored independently by two readers. The written composition rating of 0-8 represents the summation of these scores.

* Results for students who took the test with the Braille, American Sign Language videos accommodation, or the paper STAAR with embedded supports are not included in this report.