

Modeling Data For Discussion Only

DRAFT

Student Achievement Domain

DRAFT

**2017 Student Performance Domain - STAAR Performance
State**

DRAFT - For Discussion Only

	All	African American	Hispanic	White	American Indian	Asian	Pacific Islander	Two or More Races	Econ Disadv	Special Ed (Current)	Special Ed (Former)	ELL (Current)	ELL (Current & Former)	Cont Enroll	Non-Cont Enroll
All Tests															
# Tests	8,606,435	1,079,851	4,567,532	2,389,160	29,173	348,671	11,611	179,944	5,111,965	853,801	63,834	1,466,671	2,135,796	6,141,636	2,464,799
% Approaches Grade Level	75.1%	64.6%	70.9%	84.9%	74.6%	92.4%	77.1%	81.9%	67.5%	41.2%	74.2%	57.0%	66.4%	76.6%	71.6%
% Meets Grade Level	45.5%	32.2%	38.5%	59.4%	44.3%	77.5%	47.5%	55.2%	34.5%	20.9%	40.9%	24.1%	33.4%	47.1%	41.4%
% Masters Grade Level	19.9%	11.1%	14.4%	29.3%	18.4%	50.7%	20.2%	27.4%	12.2%	6.8%	19.1%	8.7%	12.9%	20.9%	17.5%
Reading															
# Tests	3,296,002	415,963	1,761,037	902,112	11,213	132,944	4,443	68,088	1,969,499	327,573	23,618	576,429	820,093	2,349,815	946,187
% Approaches Grade Level	71.9%	61.2%	66.9%	83.4%	71.1%	90.1%	73.2%	80.5%	63.4%	34.9%	71.9%	50.1%	60.6%	73.4%	68.3%
% Meets Grade Level	44.4%	32.1%	36.7%	59.8%	43.4%	74.3%	45.5%	56.1%	32.9%	19.0%	38.9%	20.2%	29.6%	45.9%	40.8%
% Masters Grade Level	18.6%	10.9%	13.1%	28.4%	17.2%	45.4%	17.9%	27.3%	11.1%	5.9%	19.1%	8.0%	11.7%	19.3%	17.0%
Mathematics															
# Tests	2,640,533	333,211	1,407,021	727,508	8,906	103,458	3,531	56,747	1,599,242	269,579	21,631	491,365	697,877	1,862,514	778,019
% Approaches Grade Level	79.2%	67.9%	76.4%	87.2%	78.8%	95.4%	81.9%	83.8%	73.1%	48.5%	81.2%	68.8%	75.4%	80.6%	75.9%
% Meets Grade Level	46.4%	31.2%	40.6%	58.8%	45.5%	82.5%	49.8%	53.8%	36.5%	22.9%	47.2%	32.0%	40.2%	48.0%	42.4%
% Masters Grade Level	22.1%	11.6%	17.1%	30.9%	20.4%	60.3%	23.7%	28.3%	14.5%	8.2%	23.3%	12.7%	17.5%	23.2%	19.5%

**Student Performance Domain
Distribution of Domain Score by Campus Type**

The UNIVARIATE Procedure

Variable: cd1

grdtype2 = AEA

Moments			
N	272	Sum Weights	272
Mean	22.4816176	Sum Observations	6115
Std Deviation	8.56318131	Variance	73.3280741
Skewness	0.68759002	Kurtosis	0.59495369
Uncorrected SS	157347	Corrected SS	19871.9081
Coeff Variation	38.0897026	Std Error Mean	0.51921913

Basic Statistical Measures			
Location		Variability	
Mean	22.48162	Std Deviation	8.56318
Median	21.00000	Variance	73.32807
Mode	21.00000	Range	46.00000
		Interquartile Range	10.00000

Quantiles (Definition 5)	
Level	Quantile
100% Max	50
99%	47
95%	40
90%	34
75% Q3	27
50% Median	21
25% Q1	17
10%	13
5%	10
1%	5
0% Min	4

**Student Performance Domain
Distribution of Domain Score by Campus Type**

The UNIVARIATE Procedure

Variable: cd1

grdtype2 = K-12

Moments			
N	331	Sum Weights	331
Mean	47.5558912	Sum Observations	15741
Std Deviation	14.9961324	Variance	224.883988
Skewness	0.31658245	Kurtosis	-0.0921394
Uncorrected SS	822789	Corrected SS	74211.716
Coeff Variation	31.5337007	Std Error Mean	0.82426198

Basic Statistical Measures			
Location		Variability	
Mean	47.55589	Std Deviation	14.99613
Median	46.00000	Variance	224.88399
Mode	55.00000	Range	82.00000
		Interquartile Range	22.00000

Quantiles (Definition 5)	
Level	Quantile
100% Max	88
99%	86
95%	74
90%	68
75% Q3	58
50% Median	46
25% Q1	36
10%	30
5%	25
1%	19
0% Min	6

**Student Performance Domain
Distribution of Domain Score by Campus Type**

**The UNIVARIATE Procedure
Variable: cd1
grdtype2 = Elementary**

Moments			
N	4340	Sum Weights	4340
Mean	47.0412442	Sum Observations	204159
Std Deviation	12.3235518	Variance	151.869928
Skewness	0.51563113	Kurtosis	0.11793746
Uncorrected SS	10262857	Corrected SS	658963.617
Coeff Variation	26.1973338	Std Error Mean	0.18706435

Basic Statistical Measures			
Location		Variability	
Mean	47.04124	Std Deviation	12.32355
Median	46.00000	Variance	151.86993
Mode	41.00000	Range	80.00000
		Interquartile Range	17.00000

Quantiles (Definition 5)	
Level	Quantile
100% Max	94
99%	80
95%	70
90%	64
75% Q3	55
50% Median	46
25% Q1	38
10%	33
5%	29
1%	23
0% Min	14

**Student Performance Domain
Distribution of Domain Score by Campus Type**

**The UNIVARIATE Procedure
Variable: cd1
grdtype2 = Middle School**

Moments			
N	1653	Sum Weights	1653
Mean	44.6412583	Sum Observations	73792
Std Deviation	12.4778803	Variance	155.697498
Skewness	0.69078517	Kurtosis	0.18844417
Uncorrected SS	3551380	Corrected SS	257212.266
Coeff Variation	27.951453	Std Error Mean	0.3069053

Basic Statistical Measures			
Location		Variability	
Mean	44.64126	Std Deviation	12.47788
Median	43.00000	Variance	155.69750
Mode	43.00000	Range	71.00000
		Interquartile Range	16.00000

Quantiles (Definition 5)	
Level	Quantile
100% Max	90
99%	78
95%	69
90%	62
75% Q3	52
50% Median	43
25% Q1	36
10%	30
5%	27
1%	22
0% Min	19

**Student Performance Domain
Distribution of Domain Score by Campus Type**

**The UNIVARIATE Procedure
Variable: cd1
grdtype2 = High School**

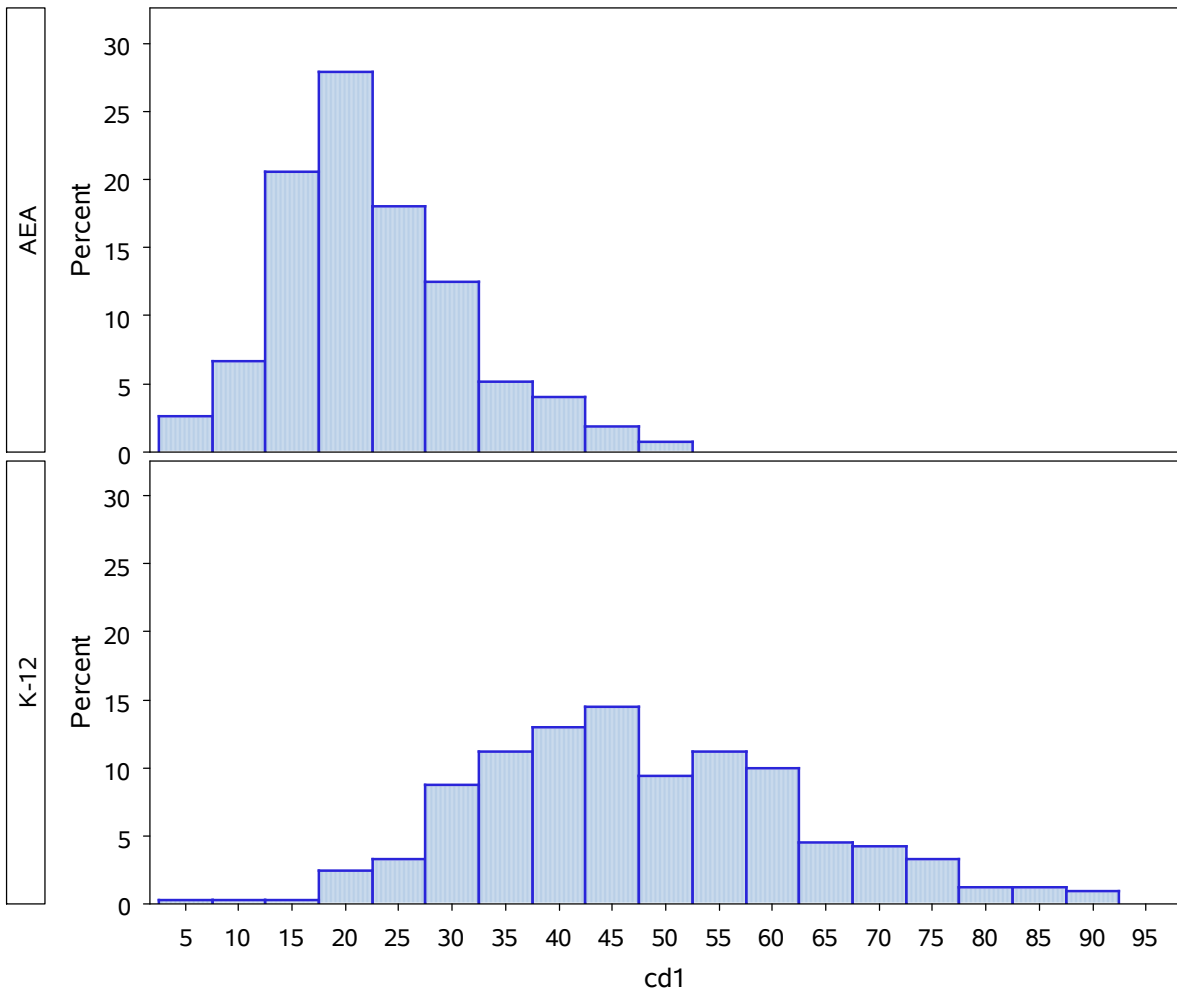
Moments			
N	1272	Sum Weights	1272
Mean	49.577044	Sum Observations	63062
Std Deviation	14.1208243	Variance	199.397679
Skewness	0.83228309	Kurtosis	0.60791666
Uncorrected SS	3379862	Corrected SS	253434.45
Coeff Variation	28.4825862	Std Error Mean	0.39592825

Basic Statistical Measures			
Location		Variability	
Mean	49.57704	Std Deviation	14.12082
Median	47.00000	Variance	199.39768
Mode	45.00000	Range	80.00000
		Interquartile Range	17.00000

Quantiles (Definition 5)	
Level	Quantile
100% Max	96
99%	89
95%	79
90%	70
75% Q3	57
50% Median	47
25% Q1	40
10%	34
5%	30
1%	24
0% Min	16

Student Performance Domain

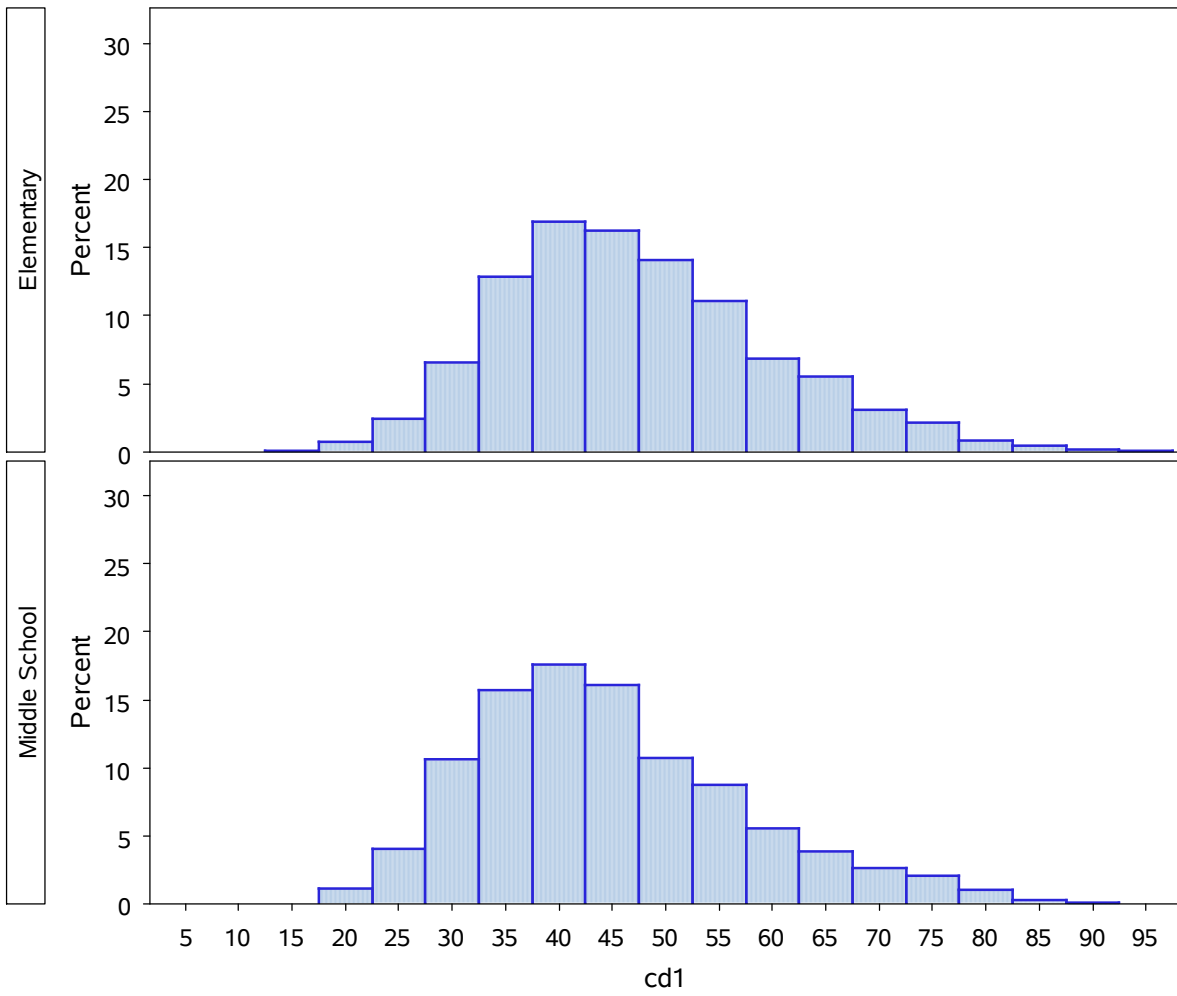
Distribution of Domain Score by Campus Type



DRAFT - For discussion only

Student Performance Domain

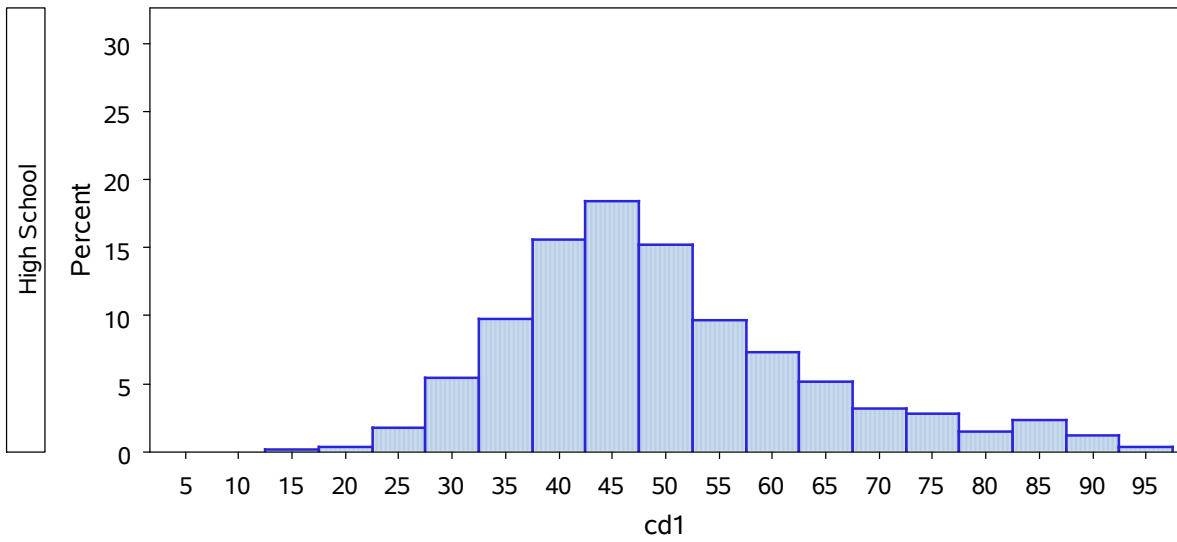
Distribution of Domain Score by Campus Type



DRAFT - For discussion only

Student Performance Domain

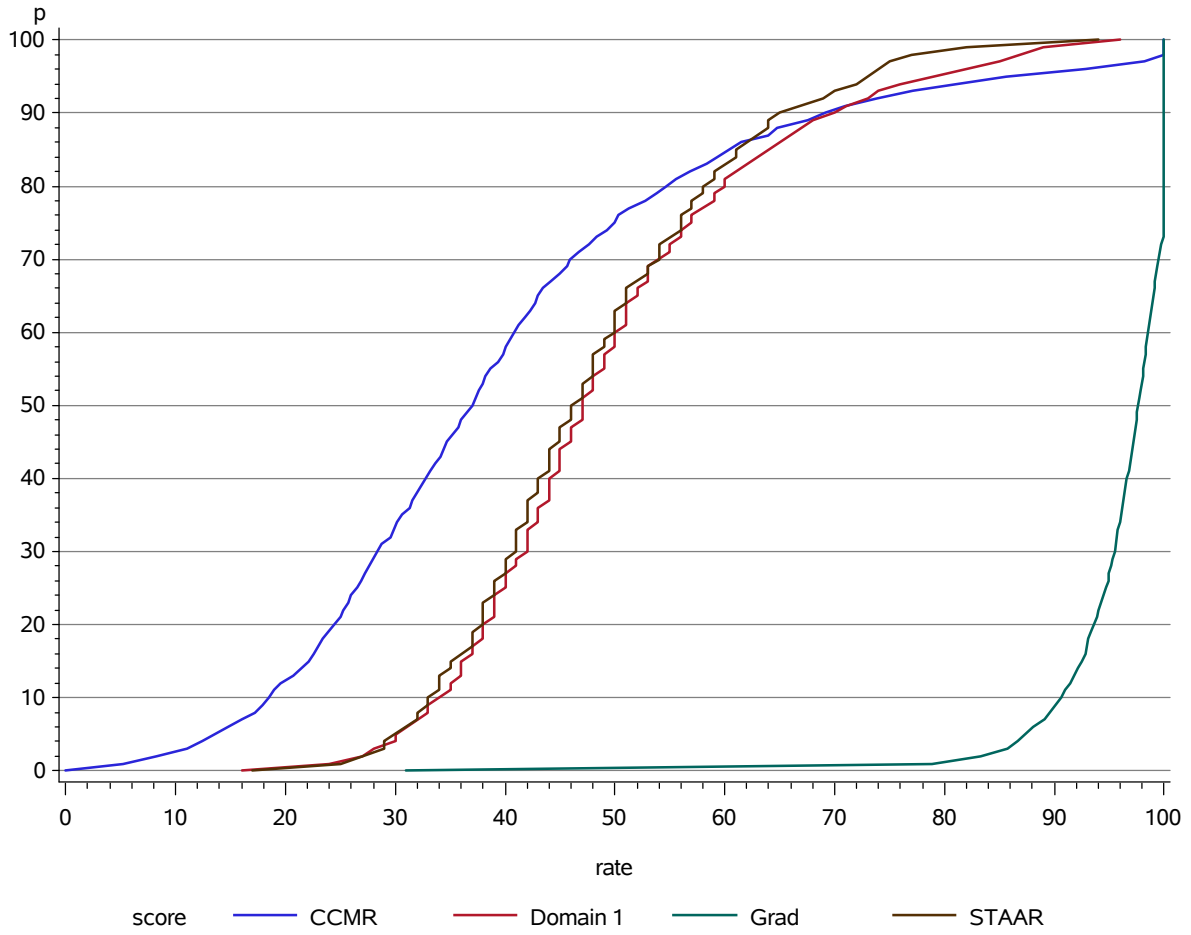
Distribution of Domain Score by Campus Type



DRAFT - For discussion only

Student Performance Domain

Cumulative Distribution
High School



DRAFT - For discussion only

School Progress Domain

Part A: Student Growth

DRAFT

Domain Ila with proxy PM_ELL. PEIMS enrollment grade 04-08 State level student count

Math, all campuses:

		cy_ma_grp						Total
		0		1		2	3	
py_ma_grp		pm=0	pm=1	pm=0.5	pm=1			
0	Frequency	116254	138935	767	160845	22896	1736	441433
	Row Pct	26.34	31.47	0.17	36.44	5.19	0.39	
1	Frequency	100949	10*	142370	180229	155380	29720	608658
	Row Pct	16.59	0	23.39	29.61	25.53	4.88	
				pm=0	pm=1			
2	Frequency	7998	0	93530	0	192855	116113	410496
	Row Pct	1.95	0	22.78	0	46.98	28.29	
3	Frequency	521	0	12115	0	74338	244700	331674
	Row Pct	0.16	0	3.65	0	22.41	73.78	
Total		364667		589856		445469	392269	1792261

*These 10 students skipped one testing grade in the current year

Reading, all campuses:

		cy_re_grp						Total
		0		1		2	3	
py_re_grp		pm=0	pm=1	pm=0.5	pm=1			
0	Frequency	140457	165828	0	139002	18168	2497	465952
	Row Pct	30.14	35.59	0	29.83	3.9	0.54	
1	Frequency	102641	0	146582	150830	126276	37045	563374
	Row Pct	18.22	0	26.02	26.77	22.41	6.58	
				pm=0	pm=1			
2	Frequency	11342	0	101357	0	149593	109628	371920
	Row Pct	3.05	0	27.25	0	40.22	29.48	
3	Frequency	1685	0	27084	0	94560	263065	386394
	Row Pct	0.44	0	7.01	0	24.47	68.08	
Total		421953		564855		388597	412235	1787640

Both subject, all campuses:

		cy_allsubj_grp						Total
		0		1		2	3	
py_allsubj_grp		pm=0	pm=1	pm=0.5	pm=1			
0	Frequency	256711	304763	767	299847	41064	4233	907385
	Row Pct	28.29	33.59	0.08	33.05	4.53	0.47	
1	Frequency	203590	10	288952	331059	281656	66765	1172032
	Row Pct	17.37	0	24.65	28.25	24.03	5.7	
				pm=0	pm=1			
2	Frequency	19340	0	194887	0	342448	225741	782416
	Row Pct	2.47	0	24.91	0	43.77	28.85	
3	Frequency	2206	0	39199	0	168898	507765	718068
	Row Pct	0.31	0	5.46	0	23.52	70.71	
Total		786620		1154711		834066	804504	3579901

Elementary School

Math, Elementary School:

		cy_ma_grp						Total
		0		1		2	3	
py_ma_grp		pm=0	pm=1	pm=0.5	pm=1			
0	Frequency	45402	58606	27	68482	8600	1106	182223
	Row Pct	24.92	32.16	0.01	37.58	4.72	0.61	
1	Frequency	30474	0	53110	73982	66162	20054	243782
	Row Pct	12.5	0	21.79	30.35	27.14	8.23	
				pm=0	pm=1			
2	Frequency	2583	0	34345	0	64110	57389	158427
	Row Pct	1.63	0	21.68	0	40.47	36.22	
3	Frequency	193	0	5761	0	28331	109714	143999
	Row Pct	0.13	0	4	0	19.67	76.19	
Total		137258		235707		167203	188263	728431

Reading, Elementary School:

		cy_re_grp						Total
		0		1		2	3	
py_re_grp		pm=0	pm=1	pm=0.5	pm=1			
0	Frequency	56942	65298	0	47516	7126	1246	178128
	Row Pct	31.97	36.66	0	26.68	4	0.7	
1	Frequency	40870	0	60971	55007	53390	18881	229119
	Row Pct	17.84	0	26.61	24.01	23.3	8.24	
				pm=0	pm=1			
2	Frequency	4195	0	35793	0	54990	46382	141360
	Row Pct	2.97	0	25.32	0	38.9	32.81	
3	Frequency	707	0	10382	0	35339	108370	154798
	Row Pct	0.46	0	6.71	0	22.83	70.01	
Total		168012		209669		150845	174879	703405

Both subject, Elementary School:

		cy_allsubj_grp						Total
		0		1		2	3	
py_allsubj_grp		pm=0	pm=1	pm=0.5	pm=1			
0	Frequency	102344	123904	27	115998	15726	2352	360351
	Row Pct	28.4	34.38	0.01	32.19	4.36	0.65	
1	Frequency	71344	0	114081	128989	119552	38935	472901
	Row Pct	15.09	0	24.12	27.28	25.28	8.23	
				pm=0	pm=1			
2	Frequency	6778	0	70138	0	119100	103771	299787
	Row Pct	2.26	0	23.4	0	39.73	34.61	
3	Frequency	900	0	16143	0	63670	218084	298797
	Row Pct	0.3	0	5.4	0	21.31	72.99	
Total		305270		445376		318048	363142	1431836

Middle School

Math, Middle School:

		cy_ma_grp						Total
		0		1		2	3	
py_ma_grp		pm=0	pm=1	pm=0.5	pm=1			
0	Frequency	66175	74929	513	86976	13581	564	242738
	Row Pct	27.26	30.87	0.21	35.83	5.59	0.23	
1	Frequency	66298	8	83631	99932	83630	8914	342413
	Row Pct	19.36	0	24.42	29.18	24.42	2.6	
				pm=0	pm=1			
2	Frequency	5072	0	55377	0	121393	55007	236849
	Row Pct	2.14	0	23.38	0	51.25	23.22	
3	Frequency	284	0	5837	0	43198	126979	176298
	Row Pct	0.16	0	3.31	0	24.5	72.03	
Total		212766		332266		261802	191464	998298

Reading, Middle School:

		cy_re_grp						Total
		0		1		2	3	
py_re_grp		pm=0	pm=1	pm=0.5	pm=1			
0	Frequency	78900	94765	0	86021	10385	1173	271244
	Row Pct	29.09	34.94	0	31.71	3.83	0.43	
1	Frequency	58211	0	80363	89863	67932	16900	313269
	Row Pct	18.58	0	25.65	28.69	21.68	5.39	
				pm=0	pm=1			
2	Frequency	6728	0	61604	0	88895	59177	216404
	Row Pct	3.11	0	28.47	0	41.08	27.35	
3	Frequency	920	0	15693	0	55498	145657	217768
	Row Pct	0.42	0	7.21	0	25.48	66.89	
Total		239524		333544		222710	222907	1018685

Both subject, Middle School:

		cy_allsubj_grp						Total
		0		1		2	3	
py_allsubj_grp		pm=0	pm=1	pm=0.5	pm=1			
0	Frequency	145075	169694	513	172997	23966	1737	513982
	Row Pct	28.23	33.02	0.1	33.66	4.66	0.34	
1	Frequency	124509	8	163994	189795	151562	25814	655682
	Row Pct	18.99	0	25.01	28.95	23.12	3.94	
				pm=0	pm=1			
2	Frequency	11800	0	116981	0	210288	114184	453253
	Row Pct	2.6	0	25.81	0	46.4	25.19	
3	Frequency	1204	0	21530	0	98696	272636	394066
	Row Pct	0.31	0	5.46	0	25.05	69.19	
Total		452290		665810		484512	414371	2016983

K-12

Math, K-12:

		cy_ma_grp						Total
		0		1		2	3	
py_ma_grp		pm=0	pm=1	pm=0.5	pm=1			
0	Frequency	3620	4077	205	4323	588	61	12874
	Row Pct	28.12	31.67	1.59	33.58	4.57	0.47	
1	Frequency	3508	1	4876	5428	4927	679	19419
	Row Pct	18.06	0.01	25.11	27.95	25.37	3.5	
				pm=0	pm=1			
2	Frequency	285	0	3333	0	6437	3339	13394
	Row Pct	2.13	0	24.88	0	48.06	24.93	
3	Frequency	35	0	457	0	2466	7185	10143
	Row Pct	0.35	0	4.51	0	24.31	70.84	
Total		11526		18622		14418	11264	55830

Reading, K-12:

		cy_re_grp						Total
		0		1		2	3	
py_re_grp		pm=0	pm=1	pm=0.5	pm=1			
0	Frequency	3666	4439	0	4374	540	68	13087
	Row Pct	28.01	33.92	0	33.42	4.13	0.52	
1	Frequency	3127	0	4521	5128	4267	1115	18158
	Row Pct	17.22	0	24.9	28.24	23.5	6.14	
				pm=0	pm=1			
2	Frequency	371	0	3537	0	5034	3560	12502
	Row Pct	2.97	0	28.29	0	40.27	28.48	
3	Frequency	48	0	902	0	3335	8146	12431
	Row Pct	0.39	0	7.26	0	26.83	65.53	
Total		11651		18462		13176	12889	56178

Both subject, K-12:

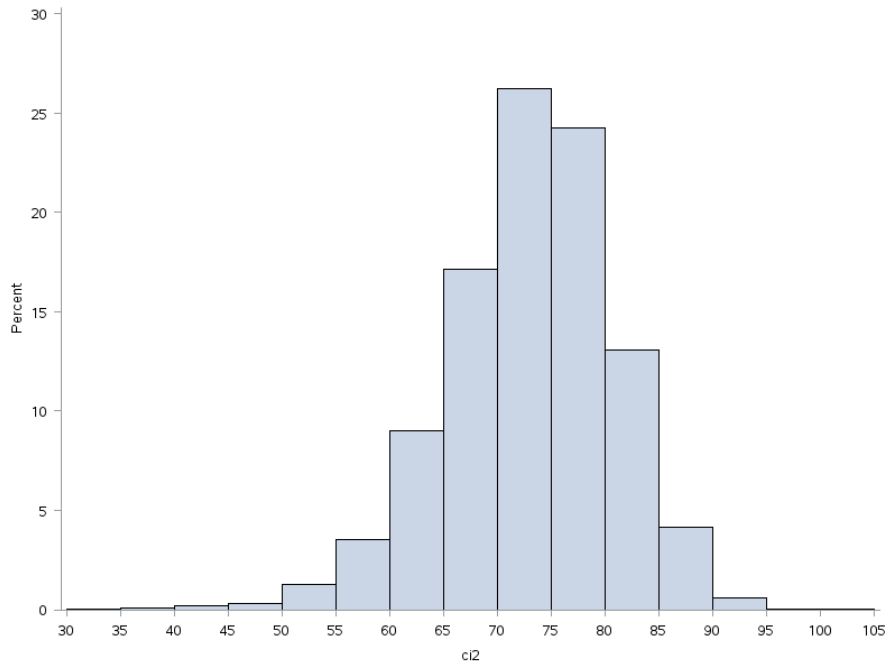
		cy_allsubj_grp						Total
		0		1		2	3	
py_allsubj_grp		pm=0	pm=1	pm=0.5	pm=1			
0	Frequency	7286	8516	205	8697	1128	129	25961
	Row Pct	28.07	32.8	0.79	33.5	4.34	0.5	
1	Frequency	6635	1	9397	10556	9194	1794	37577
	Row Pct	17.66	0	25.01	28.09	24.47	4.77	
				pm=0	pm=1			
2	Frequency	656	0	6870	0	11471	6899	25896
	Row Pct	2.53	0	26.53	0	44.3	26.64	
3	Frequency	83	0	1359	0	5801	15331	22574
	Row Pct	0.37	0	6.02	0	25.7	67.91	
Total		23177		37084		27594	24153	112008

Domain Ila score frequencies for different campus type:

Elementary Schools:

			Cumulative	Cumulative
ci2	Frequency	Percent	Frequency	Percent
100	2	0.05	2	0.05
98	1	0.02	3	0.07
96	1	0.02	4	0.09
93	1	0.02	5	0.12
92	6	0.14	11	0.26
91	4	0.09	15	0.36
90	15	0.36	30	0.71
89	11	0.26	41	0.97
88	26	0.62	67	1.59
87	43	1.02	110	2.61
86	38	0.90	148	3.51
85	58	1.37	206	4.88
84	59	1.40	265	6.28
83	90	2.13	355	8.41
82	93	2.20	448	10.62
81	141	3.34	589	13.96
80	169	4.01	758	17.97
79	157	3.72	915	21.69
78	187	4.43	1102	26.12
77	237	5.62	1339	31.74
76	213	5.05	1552	36.79
75	229	5.43	1781	42.21
74	258	6.12	2039	48.33
73	230	5.45	2269	53.78
72	212	5.02	2481	58.81
71	224	5.31	2705	64.11
70	183	4.34	2888	68.45
69	164	3.89	3052	72.34
68	174	4.12	3226	76.46
67	156	3.70	3382	80.16
66	123	2.92	3505	83.08
65	106	2.51	3611	85.59
64	98	2.32	3709	87.91
63	91	2.16	3800	90.07
62	73	1.73	3873	91.80
61	58	1.37	3931	93.17
60	59	1.40	3990	94.57
59	41	0.97	4031	95.54
58	39	0.92	4070	96.47
57	22	0.52	4092	96.99
56	25	0.59	4117	97.58
55	22	0.52	4139	98.10
54	15	0.36	4154	98.46

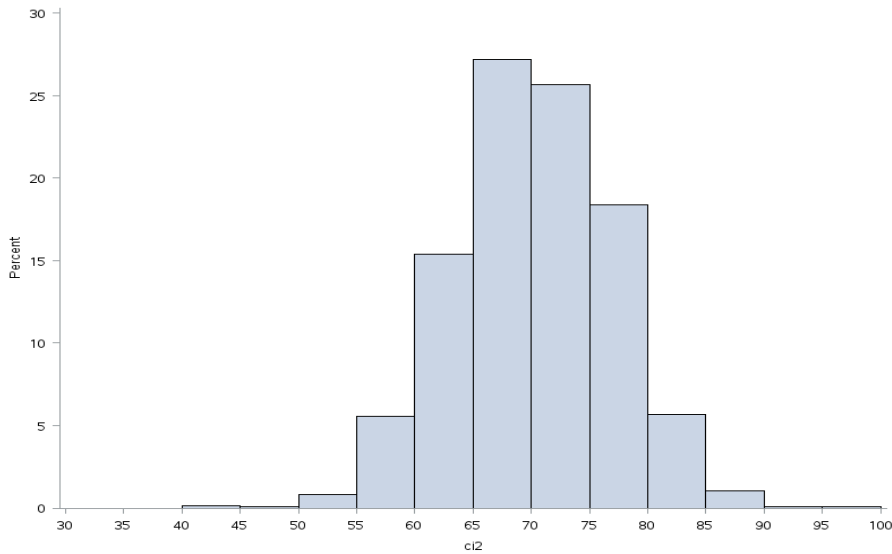
			Cumulative	Cumulative
ci2	Frequency	Percent	Frequency	Percent
53	14	0.33	4168	98.79
52	11	0.26	4179	99.05
51	4	0.09	4183	99.15
50	10	0.24	4193	99.38
49	5	0.12	4198	99.50
48	3	0.07	4201	99.57
47	2	0.05	4203	99.62
46	3	0.07	4206	99.69
45	1	0.02	4207	99.72
44	1	0.02	4208	99.74
42	3	0.07	4211	99.81
41	3	0.07	4214	99.88
40	1	0.02	4215	99.91
38	1	0.02	4216	99.93
37	1	0.02	4217	99.95
35	1	0.02	4218	99.98
34	1	0.02	4219	100.00



Middle Schools:

			CumulativeCumulative	
ci2	Frequency	Percent	Frequency	Percent
96	1	0.06	1	0.06
90	1	0.06	2	0.12
89	1	0.06	3	0.18
88	2	0.12	5	0.30
87	5	0.30	10	0.60
86	3	0.18	13	0.79
85	6	0.36	19	1.15
84	10	0.60	29	1.75
83	18	1.09	47	2.84
82	14	0.85	61	3.69
81	29	1.75	90	5.44
80	23	1.39	113	6.84
79	45	2.72	158	9.56
78	49	2.96	207	12.52
77	59	3.57	266	16.09
76	78	4.72	344	20.81
75	73	4.42	417	25.23
74	66	3.99	483	29.22
73	88	5.32	571	34.54
72	85	5.14	656	39.69
71	93	5.63	749	45.31
70	92	5.57	841	50.88
69	95	5.75	936	56.62
68	102	6.17	1038	62.79
67	87	5.26	1125	68.06
66	90	5.44	1215	73.50
65	75	4.54	1290	78.04
64	74	4.48	1364	82.52
63	62	3.75	1426	86.27
62	43	2.60	1469	88.87
61	37	2.24	1506	91.11
60	38	2.30	1544	93.41
59	30	1.81	1574	95.22
58	21	1.27	1595	96.49
57	20	1.21	1615	97.70
56	8	0.48	1623	98.19
55	13	0.79	1636	98.97
54	6	0.36	1642	99.33
53	3	0.18	1645	99.52
52	3	0.18	1648	99.70
51	2	0.12	1650	99.82
49	1	0.06	1651	99.88
41	2	0.12	1653	100.00

(Cont. for Middle School)

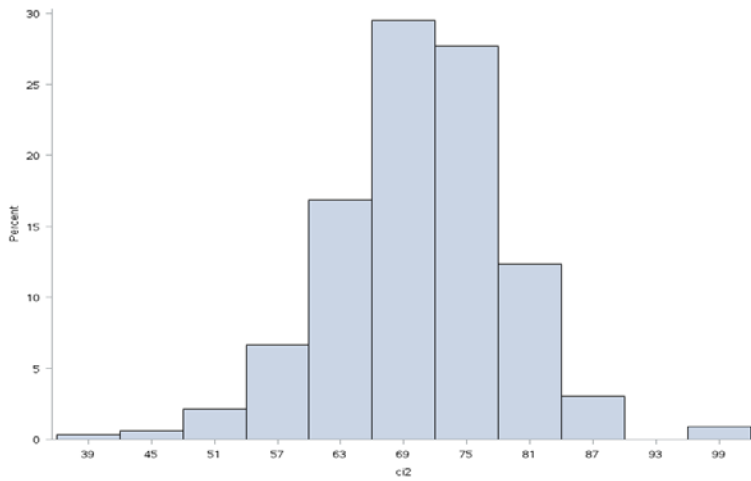


K-12:

ci2	Frequency	Percent	Cumulative Frequency	Cumulative Percent
100	3	0.90	3	0.90
87	2	0.60	5	1.50
86	2	0.60	7	2.10
85	2	0.60	9	2.69
84	4	1.20	13	3.89
83	4	1.20	17	5.09
82	6	1.80	23	6.89
81	5	1.50	28	8.38
80	8	2.40	36	10.78
79	8	2.40	44	13.17
78	10	2.99	54	16.17
77	17	5.09	71	21.26
76	13	3.89	84	25.15
75	19	5.69	103	30.84
74	13	3.89	116	34.73
73	15	4.49	131	39.22
72	15	4.49	146	43.71
71	16	4.79	162	48.50
70	18	5.39	180	53.89
69	24	7.19	204	61.08
68	17	5.09	221	66.17
67	9	2.69	230	68.86
66	14	4.19	244	73.05

Draft – For discussion only

	ci2	Frequency	Percent	Cumulative Frequency	Cumulative Percent
	65	6	1.80	250	74.85
	64	13	3.89	263	78.74
	63	13	3.89	276	82.63
	62	11	3.29	287	85.93
	61	5	1.50	292	87.43
	60	8	2.40	300	89.82
	59	6	1.80	306	91.62
	58	8	2.40	314	94.01
	57	3	0.90	317	94.91
	56	2	0.60	319	95.51
	55	1	0.30	320	95.81
	54	2	0.60	322	96.41
	53	2	0.60	324	97.01
	52	1	0.30	325	97.31
	50	3	0.90	328	98.20
	48	1	0.30	329	98.50
	47	1	0.30	330	98.80
	45	1	0.30	331	99.10
	38	1	0.30	332	99.40
	24	1	0.30	333	99.70
	0	1	0.30	334	100.00



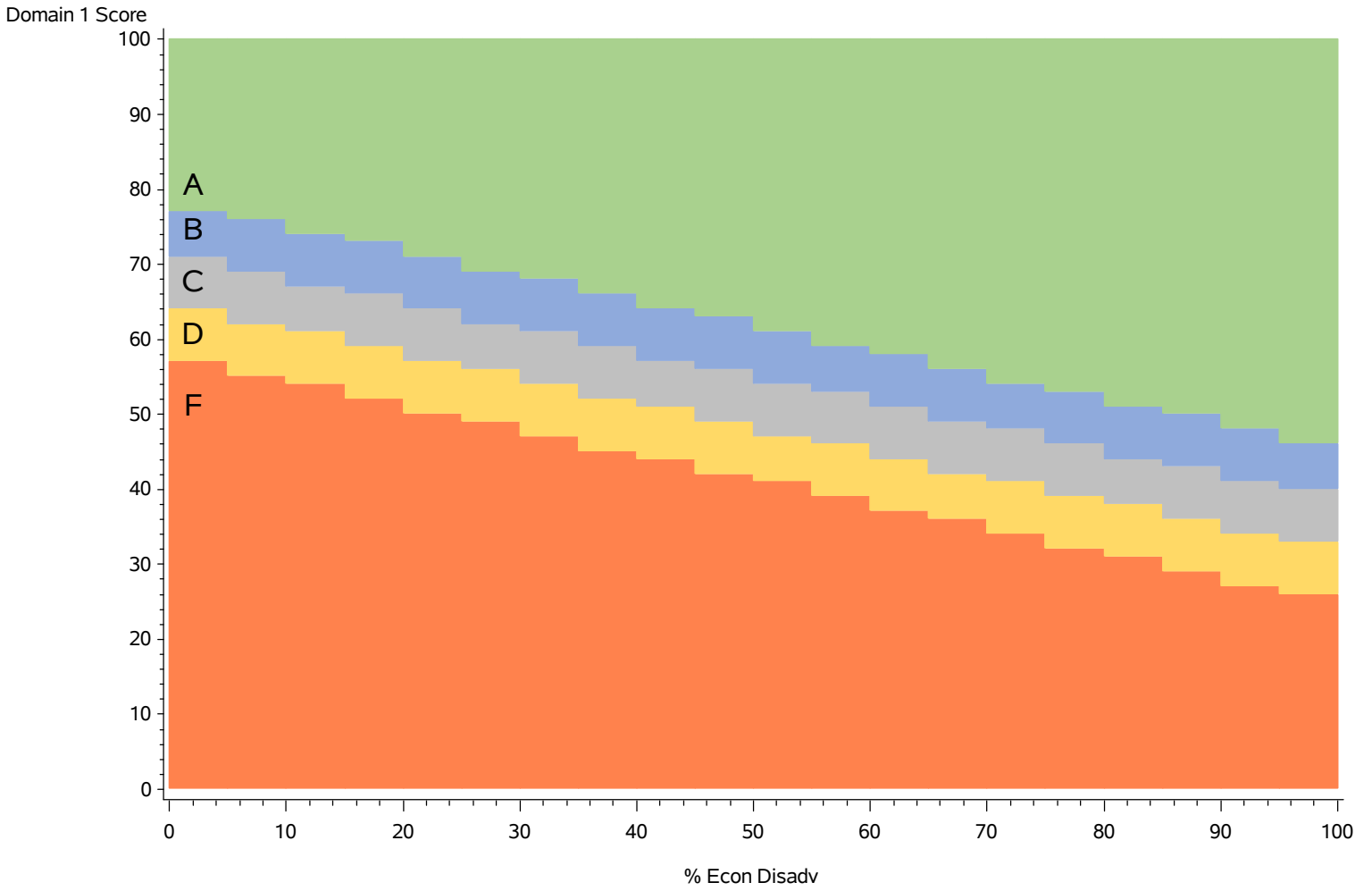
School Progress Domain

Part B: Relative Performance

DRAFT

School Progress

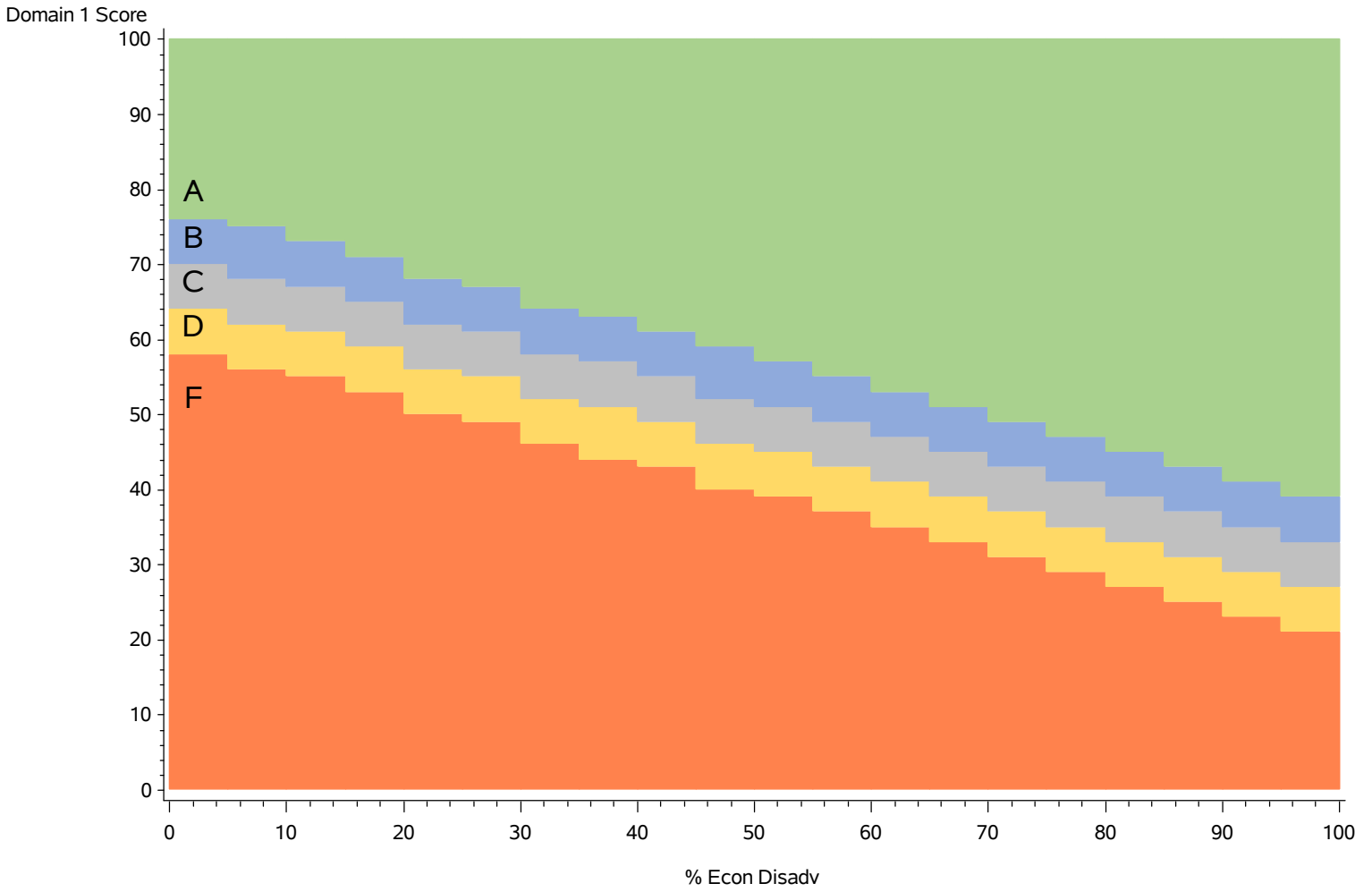
Econ Disadvantaged with Variable Targets
Elementary



DRAFT - For discussion only

School Progress

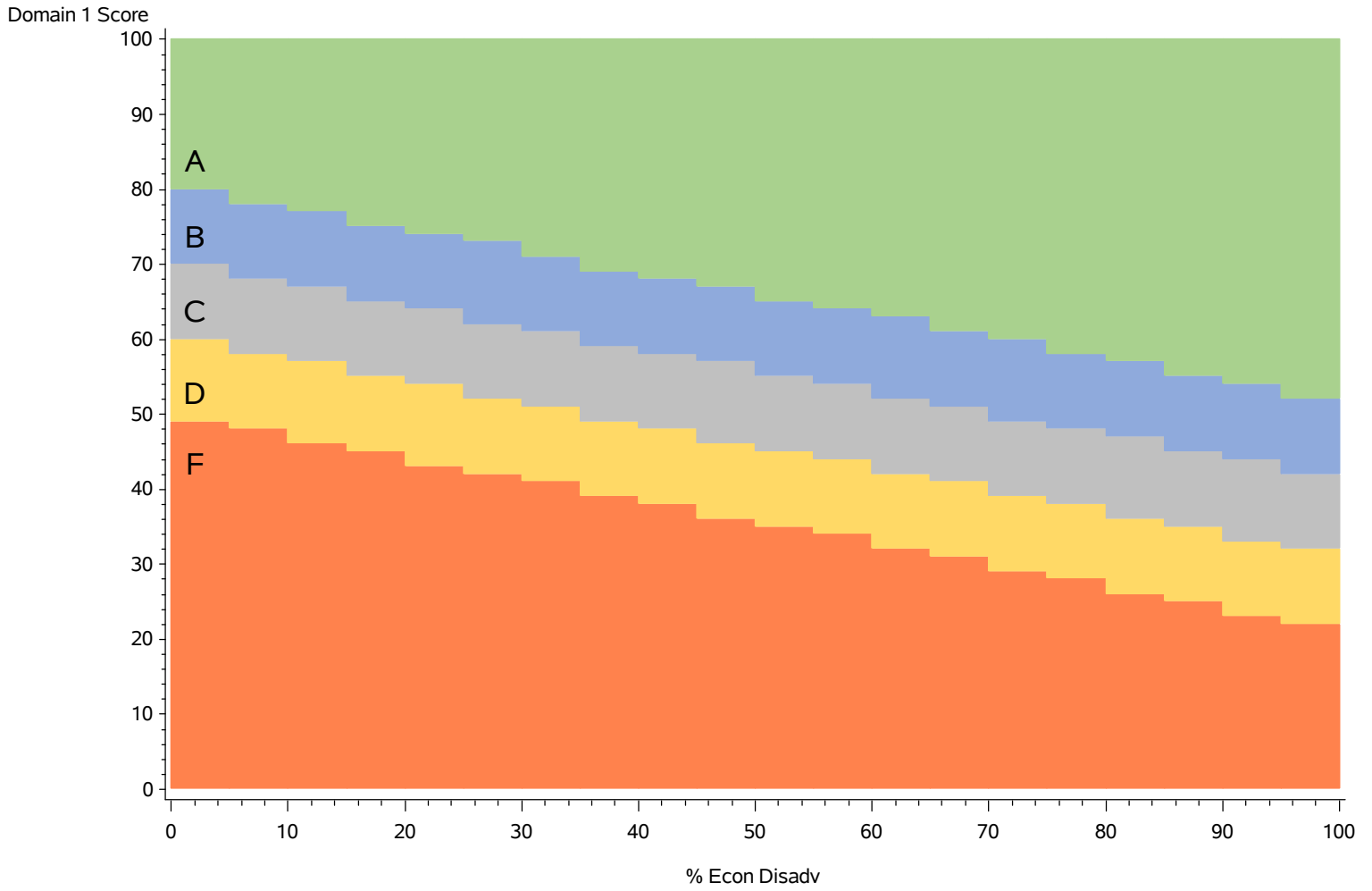
Econ Disadvantaged with Variable Targets
Middle School



DRAFT - For discussion only

School Progress

Econ Disadvantaged with Variable Targets
High School/K-12



DRAFT - For discussion only

***School Progress
Econ Disadvantaged with Variable Targets
Cut Point Table***

Econ Disadv %	Elementary				Middle School				High School K-12			
	A	B	C	D	A	B	C	D	A	B	C	D
0 to 5	77	71	64	57	76	70	64	58	80	70	60	49
5.1 to 10	76	69	62	55	75	68	62	56	78	68	58	48
10.1 to 15	74	67	61	54	73	67	61	55	77	67	57	46
15.1 to 20	73	66	59	52	71	65	59	53	75	65	55	45
20.1 to 25	71	64	57	50	68	62	56	50	74	64	54	43
25.1 to 30	69	62	56	49	67	61	55	49	73	62	52	42
30.1 to 35	68	61	54	47	64	58	52	46	71	61	51	41
35.1 to 40	66	59	52	45	63	57	51	44	69	59	49	39
40.1 to 45	64	57	51	44	61	55	49	43	68	58	48	38
45.1 to 50	63	56	49	42	59	52	46	40	67	57	46	36
50.1 to 55	61	54	47	41	57	51	45	39	65	55	45	35
55.1 to 60	59	53	46	39	55	49	43	37	64	54	44	34
60.1 to 65	58	51	44	37	53	47	41	35	63	52	42	32
65.1 to 70	56	49	42	36	51	45	39	33	61	51	41	31
70.1 to 75	54	48	41	34	49	43	37	31	60	49	39	29
75.1 to 80	53	46	39	32	47	41	35	29	58	48	38	28
80.1 to 85	51	44	38	31	45	39	33	27	57	47	36	26
85.1 to 90	50	43	36	29	43	37	31	25	55	45	35	25
90.1 to 95	48	41	34	27	41	35	29	23	54	44	33	23
95.1 to 100	46	40	33	26	39	33	27	21	52	42	32	22