

The background of the slide is a photograph of a young student with brown hair, wearing a grey hoodie, sitting at a desk in a classroom. The student is leaning forward, focused on writing in a notebook with a yellow pencil. The classroom is filled with other students at desks, and a teacher is visible in the background, slightly out of focus. The overall atmosphere is one of a busy, active learning environment.

2022 Academic Accountability Overview

Performance Reporting | Texas Education Agency

Supplemental Materials Available Online

Download a copy of this presentation

- Copies of this presentation, additional webinars, and FAQs are located at <https://tea.texas.gov/perfreport/resources/index.html>

Performance Reporting Resources

This page contains links to frequently asked questions, presentations, and other materials developed by Performance Reporting to help school administrators, teachers, parents, and the public understand and benefit from the state's accountability information.

Popular Resources and Updates

- Scaled Score Conversion Tool
- TSIA in CCMR in 2022 and Beyond August 11, 2021
- 2023 Accountability System Reset Timeline (PDF) May 4, 2021
- Inclusion of SAT/ACT for Accelerated Testers Methodology (PDF) April 4, 2021
- Academic Accountability Data Sources (PDF) January 19, 2021

Frequently Asked Questions Documents

2022 Accountability Ratings	College, Career, and Military Readiness (CCMR)	Recent Communications
-----------------------------	--	-----------------------

2022 Accountability System Framework: Summary of updates to the 2022 academic accountability system
Senate Bill 1365 Accountability System Impact: Review of changes related to the academic accountability system from SB 1365
2021-22 Identification of Schools for Improvement FAQ: Answers to questions about the identification of schools for improvement for 2021-22
Academic Accountability Data Sources: Data sources for academic accountability indicators

Additional Resources

- Archived 2021 Accountability Materials
- Archived Presentations
- Webinar Recordings



Current News

The 2020-21 school report cards are available. For further information, please view the February 3, 2022, [Letter to Superintendents](#).

Popular Webpages

- 2021-22 STAAR Raw Score Conversion Tables
- TXschools.gov
- TexasAssessment.gov
- 2022 STAAR Progress Measures

Upcoming Releases

- March: Final 2022 Accelerated Testers Listing released
- March: Part 1 of College, Career, and Military Readiness (CCMR) Tracker released
- March 28-April 8: 2022 alternative education accountability registration
- April 25-May 6: 2022 campus pairing registration
- May 2022: 2023 accountability system reset framework released
- June: Part 2 of CCMR Tracker released

TETN Sessions

- April 14, 2022 (ESC only)

Agenda

- **General 2022 Accountability Updates** ▾
- 2022 Accountability Updates by Domain
- Resources + Questions & Answers

2022 Accountability System Design

- As the agency will implement an accountability system reset in August 2023, the 2022 accountability system remains largely stable from 2019.
- The agency met with accountability advisory groups to discuss minor changes to the system. The [2022 accountability framework document](#) provides a summary of updates.
- To view advisory group meeting materials and summaries, visit the [2022 accountability development webpage](#).

A-F Accountability Rating Labels

2018

Districts



A, B, C, D, or F

2019

Districts



A, B, C, D, or F

2020

Districts



*Not Rated:
Declared State
of Disaster*

2021

Districts



*Not Rated:
Declared State
of Disaster*

2022

Districts



*A-C or Not
Rated: Senate
Bill 1365*

Campuses



*Met Standard/
Met Alternative Standard or
Improvement Required*

Campuses



A, B, C, D, or F

Campuses



*Not Rated:
Declared State
of Disaster*

Campuses



*Not Rated:
Declared State
of Disaster*

Campuses



*A-C or Not
Rated: Senate
Bill 1365*

2022 Accountability Rating Labels

- Districts and campuses receive an overall rating, as well as a rating for each domain.
- Senate Bill (SB) 1365 requires a *Not Rated* label for 2022 unless the district or campus earns an *A*, *B*, or *C*.
 - Scaled scores will be displayed on accountability reports even if a *Not Rated: Senate Bill 1365* label is applied.
 - Scaled scores will be used to determine special provisions. (e.g., District is limited to a *B* if a campus receives an overall or domain rating less than 70.)

Rating Label Cut Points	
<u>Rating Label</u>	<u>Scaled Score</u>
<i>A</i>	scaled score 90–100
<i>B</i>	scaled score 80–89
<i>C</i>	scaled score 70–79
<i>Not Rated: Senate Bill 1365</i>	scaled score ≤69

General 2022 Updates

- As prescribed by House Bill 4545, retest opportunities for grades 5 and 8 have been eliminated.
- Grades 4 and 7 writing assessments have also been eliminated.
- Scaling and student group targets will remain the same for 2022 and will be adjusted in 2023 with the reset.
 - Districts can utilize the online [Scaling Tool](#) to convert raw scores to scaled scores.

Agenda

- General 2022 Accountability Updates
- **2022 Accountability Updates by Domain** ◀
- Resources + Questions & Answers

Student Achievement—STAAR

STAAR

As prescribed by HB 4545, retest opportunities for grades 5 and 8 have been eliminated. Grades 4 and 7 writing are no longer assessed.

Example Middle School	
Approaches	64%
Meets	43%
Masters	21%
Total Percentage Points	128
Component Score (Total % Points ÷ 3)	43
Scaled Score	75 (C)

Student Achievement—CCMR

College Ready



- Meet criteria of 3 on AP or 4 on IB examinations
- Meet Texas Success Initiative (TSI) criteria (SAT, ACT, [TSIA1](#) and/or [TSIA2](#), or a College Prep course) in reading and mathematics
- Complete a course for dual credit (9 hours or more in any subject or 3 hours or more in ELAR/mathematics)
- Earn an associate degree
- Complete an OnRamps dual enrollment course and qualify for at least 3 hrs credit



Military Ready

Enlist in the United States Armed Forces**

Career Ready



- Earn an industry-based certification
- Graduate with completed IEP and workforce readiness (graduation type codes 04, 05, 54, or 55)
- Earn a Level I or Level II certificate
- Graduate under an advanced diploma plan and be identified as a current special education student

**Due to discrepancies between annual enlistment counts for Texas military enlistees aged 17–19 released by the United States Department of Defense and TSDS PEIMS military enlistment data for 2017 and 2018 annual graduates, military enlistment data is excluded from accountability calculations until such data can be obtained directly from the United States Armed Forces.

Student Achievement—CCMR

- The newly designed Texas Success Initiative assessment (TSIA2) will be considered for College, Career, and Military Readiness (CCMR) credit for 2020–21 graduates and non-graduating 12th graders in addition to prior TSIA1 records.
- To meet TSI criteria for accountability purposes, a student must meet the minimum scores in both English language arts/reading (ELAR) and mathematics via the SAT, ACT, TSIA or by earning credit for a college prep course. The student does not necessarily need to meet criteria for both subjects on the same assessment.

Student Achievement—CCMR

Subject	Assessment Version	Score Requirements for CCMR				
English Language Arts and Reading (ELAR)	TSIA1	Score \geq 351 on Reading				
	TSIA2	Score \geq 945 on the ELAR College Readiness Classification (CRC)	AND		Score \geq 5 on the essay	
		OR				
		Score $<$ 945 on the ELAR CRC	AND	Score \geq 5 on the diagnostic	AND	Score \geq 5 on the essay
	Combination	Score \geq 945 on the ELAR CRC on the TSIA2	AND		Score \geq 5 on the TSIA1 essay	
		OR				
	Score $<$ 945 on the ELAR CRC on the TSIA2	AND	Score \geq 5 on the diagnostic on the TSIA2	AND	Score \geq 5 on the TSIA1 essay	
Mathematics	TSIA1	Score \geq 350 on Mathematics				
	TSIA2	Score \geq 950 on the Mathematics CRC				
		OR				
	Score $<$ 950 on the Mathematics CRC	AND	Score = 6 on the diagnostic			

Student Achievement—Graduation Rate

Graduation Rate

No changes

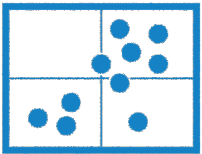
Example Calculation: Graduation Rate	
Graduation Rate	All Students
Class of 2021, 4-year	85.2%
Class of 2020, 5-year	87.3%
Class of 2019, 6-year	85.0%
Graduation Rate Score (Highest of 4-year, 5-year & 6-year graduation rates)	87.3

School Progress



Part A: Academic Growth

Compare available 2021 results to 2022 results

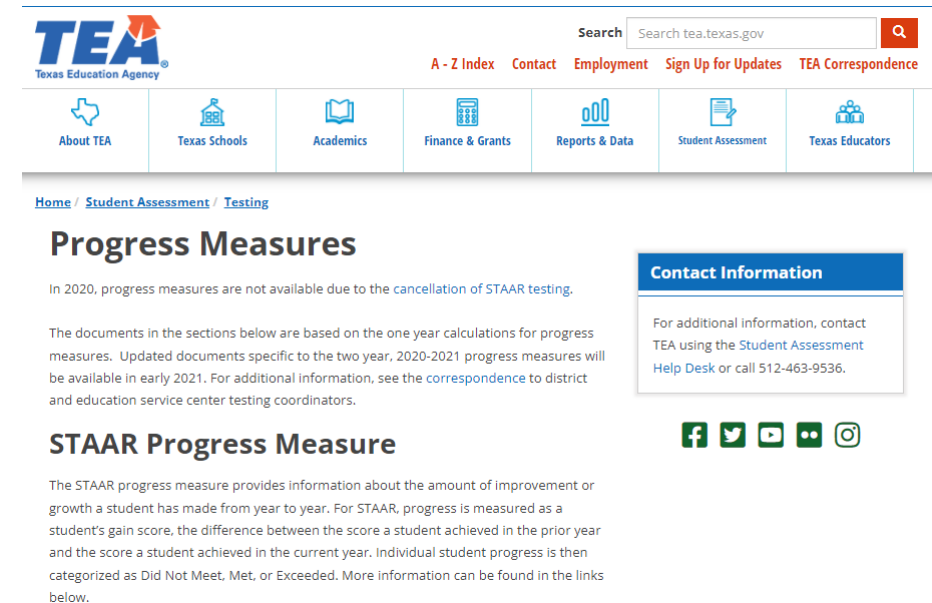


Part B: Relative Performance

No changes

School Progress Part A: Academic Growth

- The prior year to current-year methodology that was used in 2019 will return. Performance from 2021 will be compared to 2022.
- Calculations will consider assessment results eligible for a STAAR progress measure.
- Updated documents explaining how STAAR progress measures are calculated are available on the [Progress Measures webpage](#).



The screenshot shows the TEA website's "Progress Measures" page. At the top, there is a search bar with the text "Search tea.texas.gov" and a magnifying glass icon. Below the search bar is a navigation menu with links for "A - Z Index", "Contact", "Employment", "Sign Up for Updates", and "TEA Correspondence". A secondary navigation bar contains icons and labels for "About TEA", "Texas Schools", "Academics", "Finance & Grants", "Reports & Data", "Student Assessment", and "Texas Educators". The main content area features a breadcrumb trail: "Home / Student Assessment / Testing". The heading "Progress Measures" is prominently displayed. Below it, a notice states: "In 2020, progress measures are not available due to the cancellation of STAAR testing." A paragraph explains that documents are based on one-year calculations for 2020-2021, with updated documents for 2020-2021 progress measures available in early 2021. A "Contact Information" box on the right provides contact details for the Student Assessment Help Desk (512-463-9536). Below this box are social media icons for Facebook, Twitter, YouTube, LinkedIn, and Instagram. The section "STAAR Progress Measure" follows, with a paragraph explaining that the measure tracks student improvement from year to year, calculated as the difference between a student's score in the prior year and the current year, categorized as Did Not Meet, Met, or Exceeded.

School Progress Part A: Academic Growth

STAAR

Current Year

Previous Year

	Did Not Meet Grade Level	Approaches Grade Level	Meets Grade Level	Masters Grade Level
Did Not Meet Grade Level	Met/Exceeded Growth Measure = 1 pt Did not meet = 0 pts	Met/Exceeded Growth Measure = 1 pt Else = .5 pts	1 pt	1 pt
Approaches Grade Level	Met/Exceeded Growth Measure = 1 pt Did not meet = 0 pts	Met/Exceeded Growth Measure = 1 pt Else = .5 pts	1 pt	1 pt
Meets Grade Level	0 pts	0 pts	Met/Exceeded Growth Measure = 1 pt Else = .5 pts	1 pt
Masters Grade Level	0 pts	0 pts	0 pts	1 pt

School Progress Part A: Academic Growth

STAAR Alternate 2

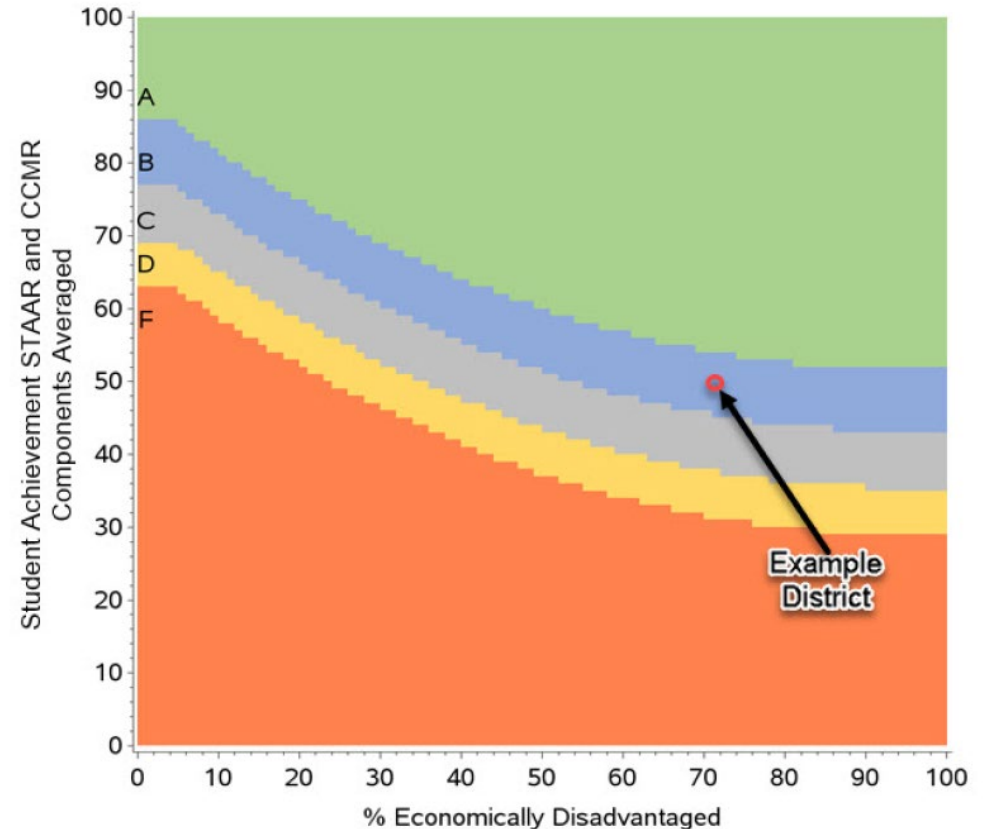
..... Current Year

..... Previous Year

	Level I: Developing	Level II: Satisfactory	Level III: Accomplished
Level I: Developing	Met/Exceeded Growth Measure = 1 pt Did not meet = 0 pts	1 pt	1 pt
Level II: Satisfactory	0 pts	Met/Exceeded Growth Measure = 1 pt Else = .5 pts	1 pt
Level III: Accomplished	0 pts	0 pts	1 pt

School Progress Part B: Relative Performance

- No changes.
- School Progress, Part B evaluates the overall student performance on the STAAR and CCMR (if available) compared to campuses/districts with similar percentages of economically disadvantaged students, as reported in the TSDS PEIMS October snapshot.



Closing the Gaps Components



Academic Achievement

STAAR performance at the Meets Grade Level standard or above in English language arts (ELA)/reading and mathematics



Academic Growth

School Progress, Part A domain data for elementary and middle schools



Graduation Rate

Four-year federal graduation rate (without exclusions) for high schools, K-12s, and districts with graduation rates



English Language Proficiency (ELP)

Emergent bilingual student/English learner progress on TELPAS



CCMR

Students' preparedness for college, the workforce, or the military for high schools, K-12s, and districts



STAAR Component

STAAR performance at the Approaches Grade Level, Meets Grade Level, and Masters Grade Level standards in all subjects for elementary and middle schools

2022 Closing the Gaps Updates



Academic Achievement

As prescribed by HB 4545, retest opportunities for grades 5 and 8 have been eliminated.



Academic Growth

Compare available 2021 results to 2022 results.



Graduation Rate

No changes; continue using the updated methodology.



English Language Proficiency

Updated to account for the impact of COVID on 2021 and 2020 TELPAS administrations.



CCMR

No changes; continue to exclude military enlistment data until we receive source data.



STAAR Component

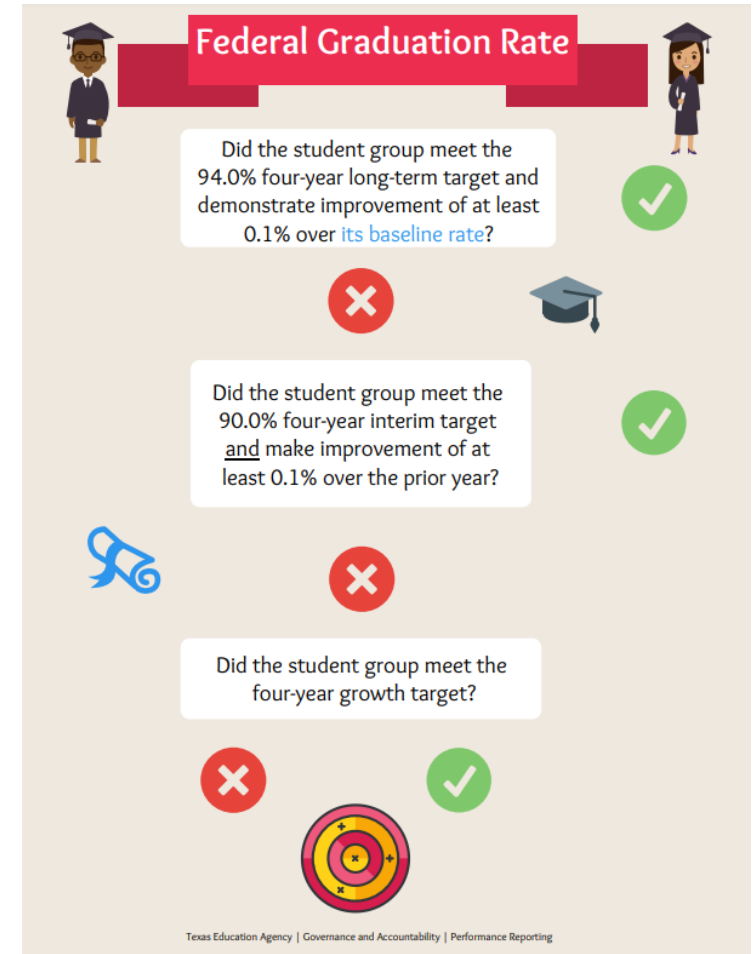
Retest opportunities for grades 5 and 8 have been eliminated. Grades 4 and 7 writing are no longer assessed.

2022 English Language Proficiency Update

- The ELP methodology is updated to account for the impact of COVID on 2021 and 2020 TELPAS administrations.
 - A student is considered having made progress if the student advances by at least one score of the composite rating from the prior year to the current year, or the student's 2022 result is Advanced High or Basic Fluency.
 - If the composite rating from 2021 is not available, the 2020 composite rating is compared to the 2022 composite rating. As the completion of TELPAS was optional in 2020, if the 2020 composite rating is available but does not show progress, the 2019 composite rating is compared to the 2022 composite rating.
 - If the composite rating from 2020 is not available, the 2019 composite rating is compared to the 2022 composite rating.
 - If the composite rating from 2019 is not available, the 2018 composite rating is compared to the 2022 composite rating.
- The ELP component will evaluate three years of TELPAS Alternate data in addition to TELPAS data. Current year TELPAS Alternate composite scores will be compared to the 2021, 2020, or 2019 (if 2020 is not available).

Graduation Rate Methodology

1. Did the student group meet the four-year long-term graduation rate target of 94.0% and demonstrate improvement of at least 0.1% over the group's statewide baseline (Class of 2015) rate?
2. Did the student group meet the four-year interim graduation rate target of 90.0% and demonstrate improvement of at least 0.1% over the prior year rate?
3. Did the student group meet or exceed its four-year graduation rate growth target?



Current Closing the Gaps Targets

Academic Achievement (Percentage at Meets Grade Level or above)														
Subject	All Students	African American	Hispanic	White	American Indian	Asian	Pacific Islander	Two or More Races	Special Educ.	Econ. Disadv.	EL (Current and Monitored)	Special Ed (Former)	Cont. Enrolled	Non-Cont. Enrolled
ELA/Reading	44%	32%	37%	60%	43%	74%	45%	56%	19%	33%	29%	36%	46%	42%
Mathematics	46%	31%	40%	59%	45%	82%	50%	54%	23%	36%	40%	44%	47%	45%

Subject	Academic Growth Status (Elementary and Middle Schools)													
ELA/Reading	66%	62%	65%	69%	67%	77%	67%	68%	59%	64%	64%	65%	66%	67%
Mathematics	71%	67%	69%	74%	71%	86%	74%	73%	61%	68%	68%	70%	71%	70%

Federal Graduation Status (High Schools, K-12s, and Districts) ¹														
90%	90%	90%	90%	90%	90%	90%	90%	90%	90%	90%	90%	n/a	n/a	n/a

Student Achievement Domain Score: STAAR Component Only (Elementary and Middle Schools)														
47%	36%	41%	58%	46%	73%	48%	55%	23%	38%	37%	43%	48%	45%	

College, Career, and Military Readiness Performance Status (High Schools, K-12s, and Districts)														
47%	31%	41%	58%	42%	76%	39%	53%	27%	39%	30%	43%	50%	31%	

English Language Proficiency Status ²														
											36%			

Distinction Designations

- Distinction designations will be awarded for 2022. Campus comparison groups will be generated and distinction data will be published.
- For 2022, distinction designations are awarded in the following areas:
 - Academic Achievement in English Language Arts/Reading (campus only)
 - Academic Achievement in Mathematics (campus only)
 - Academic Achievement in Science (campus only)
 - Academic Achievement in Social Studies (campus only)
 - Top 25 Percent: Comparative Academic Growth (campus only)
 - Top 25 Percent: Comparative Closing the Gaps (campus only)
 - Postsecondary Readiness (district and campus)

Agenda

- General 2022 Accountability Updates
- 2022 Accountability Updates by Domain
- **Resources + Questions & Answers ◀**

Scaling Tool

- In order to align letter grades and scores used in the A–F academic accountability system to the common conception of letter grades, raw domain and component scores are adjusted, or “scaled.”
- Performance Reporting has an [online scaling tool](#) to assist with the conversion of raw domain and component scores to scaled scores.
- Please note, as required by Senate Bill 1365, campuses and districts will receive a *Not Rated: Senate Bill 1365* label instead of *D* or *F* ratings in 2022.

[Home](#) > [Performance Reporting Division](#) > [Texas Accountability Rating System](#) > Scaled Score Conversion

Scaled Score Conversion Tool

This tool can be used to determine the scaled score that will be used in accountability for a domain or component. This tool is best viewed using Chrome or Firefox.

Please note, as required by Senate Bill 1365, campuses and districts will receive a *Not Rated* label instead of *D* or *F* ratings in 2022.

Do you want to see a scaled score for a campus or a district?

- Campus
 District

For which type of campus or district do you want to see a scaled score?

- Elementary School
 Middle/Junior High School
 High School or Elementary/Secondary (K-12)
 Alternative Education Accountability Campus or District

For which domain or component do you want to see a scaled score?

- Student Achievement - STAAR Component
 School Progress - Academic Growth
 School Progress - Relative Performance
 Closing the Gaps

Find Scaled Score

Domain or component score:

50

Compute Scaled Score

A-F Estimator

- The A-F Estimator is available on the following [webpage](#). This tool provides a way to calculate and estimate the performance of a district or campus in each domain and overall.
- The tool currently prepopulates domain and component values with 2019 results. You can enter new component values to estimate the corresponding domain and overall results. The accuracy and validity of the estimation is based solely on the data input by the user.
- Please note, as required by Senate Bill 1365, campuses and districts will receive a *Not Rated: Senate Bill 1365* label instead of *D* or *F* ratings in 2022.

[Home](#) > [Performance Reporting Department](#) > [Texas Accountability Rating System](#) > A-F Estimator

A-F Estimator

The A-F Estimator provides a way to calculate and estimate the performance of a district or campus in each domain and overall. The tool currently prepopulates domain and component values with 2019 results. You can enter new component values to estimate the corresponding domain and overall results. The accuracy and validity of the estimation is based solely on the data input by the user. The tool does not include AEA bonus points and Local Accountability, which may affect the overall rating.

Please note, as required by Senate Bill 1365, campuses and districts will receive a *Not Rated* label instead of *D* or *F* ratings in 2022.

What report level would you like?

- Campus Report
- District Report

How do you wish to search?

- Campus Name (full or partial name)
- Campus Number
- Campus by District Name (full or partial name)
- Campus by County Name (full or partial name)
- Campus by Region Number

2022 Accountability Ratings Webpage

- Additional explanatory materials and resources will be available later this spring on the [2022 Accountability Ratings System webpage](#).

The screenshot displays the TEA website's navigation and content for the 2022 Accountability Rating System. At the top left is the TEA logo (Texas Education Agency). To the right is a search bar with the text "Search tea.texas.gov" and a magnifying glass icon. Below the search bar are links for "A - Z Index", "Contact", "Employment", "Sign Up for Updates", and "TEA Correspondence". A horizontal menu contains icons and labels for "About TEA", "Texas Schools", "Academics", "Finance & Grants", "Reports & Data", "Student Assessment", and "Texas Educators". Below this is a breadcrumb trail: "Home / Texas Schools / Accountability / Academic Accountability / Performance Reporting". To the right of the breadcrumb are links for "View", "Edit", "Latest version", "History", "Revisions", "Preview Link", and "Usage". The main heading is "2022 Accountability Rating System". Below it is a paragraph: "The 2022 accountability reports and resources will be available on this page as they are released." Another paragraph follows: "The TXSchools.gov website contains interactive accountability rating reports and detailed reports for each district, campus, and open-enrollment charter school in the state of Texas (TXSchools.gov is optimized for Chrome, Firefox, and Safari)." The next section is titled "Explanatory Materials & Resources" and contains two paragraphs: "The 2022 Accountability System Framework, which will provide a brief summary of changes to the 2022 accountability rating system, will be released Friday, February 25." and "The proposed 2022 Accountability Manual, which will provide technical details about the system, will be published for a 30-day public comment period from April 8–May 9." Below this is a "Print" button. On the right side, there are two blue-bordered boxes. The first is titled "Related Content" and lists: "Previous Accountability Systems", "A-F Estimator", "Scaled Score Conversion Tool", "2022 Accountability Development", "Public Education Grant", "TEAL Accountability Application Request", and "Performance Reporting Resources". The second box is titled "Contact Information" and lists: "Division of Performance Reporting", "Phone: (512) 463-9704", and "performance.reporting@tea.texas.gov".

Performance Reporting Resources

- Visit the [Performance Reporting Resources](#) page for links to frequently asked questions, presentations, and other explanatory materials.
- Subscribe to our [weekly newsletter](#) to get the latest updates regarding state and federal accountability.

[Home](#) / [Texas Schools](#) / [Accountability](#) / [Academic Accountability](#) / [Performance Reporting](#)

Performance Reporting Resources

This page contains links to frequently asked questions, presentations, and other materials developed by Performance Reporting to help school administrators, teachers, parents, and the public understand and benefit from the state's accountability information.

Popular Resources and Updates

- [Senate Bill 1365 Accountability System Impact](#) November 15, 2021
- [TSIA in CCMR In 2022 and Beyond](#) August 11, 2021
- [Adopted 2021 Accountability Manual](#) July 13, 2021
- [Assessment Management System Transition Timelines](#) June 8, 2021
- [Accessing 2021 Accountability Longitudinal Cohort and Dropout Information through TEAL](#) June 3, 2021
- [Long-Term and Interim Goals for ESSA Federal Accountability \(PDF\)](#) May 5, 2021
- [Accountability System Reset Timeline \(PDF\)](#) May 4, 2021
- [Inclusion of SAT/ACT for Accelerated Testers Methodology \(PDF\)](#) April 4, 2021
- [Accelerated Testers Timeline \(PDF\)](#) September 21, 2021
- [Academic Accountability Data Sources \(PDF\)](#) January 19, 2021

Frequently Asked Questions Documents

2021 Accountability Ratings

College, Career, and Military Readiness (CCMR)

Recent Communications

[2021 Alternative Evaluation FAQs](#): Answers to questions about the 2021 alternative evaluation as a method for campuses to break the chain of consecutive years of unacceptable performance

[2021 Academic Accountability Reporting](#): Overview of which data will and will not be available for 2021 reporting

[2021 Academic Accountability System Framework FAQs](#): Answers to questions that are commonly asked about the 2021 accountability system

[2021 Academic Accountability System Framework](#): Overview of the 2021 accountability system

Current News

The [Texas Performance Reporting System](#) is available and will be updated on a rolling basis throughout fall.

SB 1365 (87th Texas Legislature) established a 2021 alternative evaluation option for certain campuses that meet participation requirements and earned an unacceptable rating for the most recent year they were rated. To learn more, see the [2021 Alternative Evaluation FAQs](#).

The full [2021 Accountability Manual](#) is available. Chapters 1-11 have been adopted.

Popular Webpages

[2020-21 STAAR Raw Score Conversion Tables](#)

[TXschools.gov](#)

[TexasAssessment.gov](#)

[Texas Academic Performance Report \(TAPR\)](#)

Upcoming Releases

Mid-January: Final TAPR PDF released (only)

Division of Performance Reporting

Phone: (512) 463-9704

Performance.Reporting@tea.texas.gov

For Education Service Center (ESC) regional support, please contact the appropriate specialist shown in our list of [ESC Accountability Contacts](#).