

TO: Governor Abbott
Lieutenant Governor Patrick
Speaker Bonnen of the House of Representatives
Members of the 86th Texas Legislature

FROM: Texas Education Agency

DATE: August 30, 2019

RE: Postsecondary Readiness Assessment Instruments

House Bill 5 passed by the 83rd Texas Legislature added Section 39.0238 to the Texas Education Code requiring the adoption and administration of postsecondary readiness assessment instruments for English III and Algebra II that a school district may administer at the district's option. The statute also requires the agency to provide the legislature a report on the summary of student performance on the preceding year's postsecondary readiness assessment instruments.

Attached are the summary reports from the spring 2016, 2017, 2018, and 2019 administrations of the State of Texas Assessments of Academic Readiness (STAAR®) English III and Algebra II end-of-course (EOC) assessments.

Please contact Governmental Relations at GovRel@tea.texas.gov or 512-463-9682 if you have any questions.

Postsecondary Readiness Assessments

Summary Information	2016	2017	2018	2019
Number of 11th Graders in Texas*	351,888	363,655	371,871	373,213
STAAR English III EOC Assessment				
Number of 11th Grade Students Assessed	10,337	10,076	9,179	4,624
Percent of 11th Grade Students Assessed*	2.9%	2.8%	2.5%	1.2%
Percent of Test Takers at Approaches Grade Level**	70%	71%	72%	75%
Percent of Test Takers at Masters Grade Level***	13%	11%	13%	15%
Number of Districts/Charters Participating	74	53	47	27
Percent of Districts/Charters Participating	6.1%	4.4%	3.9%	2.3%
STAAR Algebra II EOC Assessment				
Number of 11th Grade Students Assessed	14,252	13,326	11,965	8,490
Percent of 11th Grade Students Assessed*	4.1%	3.7%	3.2%	2.3%
Percent of Test Takers at Approaches Grade Level**	79%	81%	77%	78%
Percent of Test Takers at Masters Grade Level***	18%	23%	25%	22%
Number of Districts/Charters Participating	85	60	52	31
Percent of Districts/Charters Participating	7.0%	5.0%	4.3%	2.6%

*Students generally, but not exclusively, take English III in 11th grade. Students take Algebra II in a mix of grades. These percentages are included to give a sense of scope in terms of the percent of Texas students who take these assessments. These percentages are not meant to precisely reflect the percentage of students who take an EOC assessment as a function of the percent of students who participate in those classes.

**In the 2015–2016 school year, STAAR results were reported with the term “Level II: Satisfactory”. In the 2016–2017 school year, this terminology was changed to “Approaches Grade Level”. This is the minimum passing standard required for the other STAAR EOC assessments, which are required for graduation.

***In the 2015–2016 school year, STAAR results were reported with the term “Level III: Advanced”. In the 2016–2017 school year, this terminology was changed to “Masters Grade Level”. This standard is roughly equivalent to the college readiness criteria recommended for the SAT and the ACT.



STATE OF TEXAS ASSESSMENTS OF ACADEMIC READINESS

Summary Report

ENGLISH III

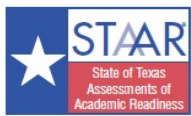
All Students

STATEWIDE

Report Date: SUMMER 2016

Date of Testing: SPRING 2016

Administration Summary			Number of Students Tested	Average Scale Score	PASSED				DID NOT PASS		Results for Each Reporting Category															
Number	Percent	Level II: Satisfactory				Level III: Advanced		Level I: Unsatisfactory		1				2		3		4		5		6				
Students Tested	10337									88	Understanding/ Analysis Across Genres				Understanding/ Analysis of Literary Texts		Understanding/ Analysis of Informational Texts		Composition		Revision		Editing			
											Short Answer Rating (Single Selection)	Short Answer Rating (Paired Selections)	Multiple Choice													
Students Not Tested					Number of Points Possible																					
Absent	1357	12			9		9		6		11		11		24		11		11							
Other	26	0			Number of Points Scored																					
Total Documents Submitted	11720	100			#	%	#	%	#	%	#	%	#	%	#	%	#	%	#	%	#	%	#	%		
Legend																										
--- = No Data Reported For Fewer Than Five Students																										
All Students	10337	3985	7211	70	1380	13	3126	30	4.5	50	3.9	44	3.6	61	5.9	53	6.5	59	11.0	46	6.7	61	7.0	64		
Male	5343	3886	3315	62	518	10	2028	38	3.9	43	3.5	39	3.4	57	5.5	50	6.2	56	10.2	43	6.5	59	6.6	60		
Female	4993	4092	3895	78	862	17	1098	22	5.1	57	4.4	49	3.9	65	6.3	57	6.8	62	11.8	49	7.0	64	7.4	68		
No Information Provided	1	---	---	---	---	---	---	---	---	---	---	---	---	---	---	---	---	---	---	---	---	---	---	---		
Hispanic/Latino	7188	3973	4990	69	899	13	2198	31	4.5	50	4.0	44	3.6	60	5.8	53	6.4	58	11.0	46	6.6	60	6.9	63		
American Indian or Alaska Native	25	3879	15	60	4	16	10	40	4.2	47	4.2	47	3.0	51	5.5	50	5.8	52	11.3	47	6.3	57	6.3	57		
Asian	92	4244	71	77	33	36	21	23	5.0	56	4.3	47	4.2	70	6.6	60	7.2	66	13.2	55	7.6	69	8.0	73		
Black or African American	789	3858	462	59	69	9	327	41	4.2	47	3.6	40	3.4	56	5.3	48	5.9	54	10.0	41	6.1	56	6.5	59		
Native Hawaiian or Other Pacific Islander	10	3941	7	70	0	0	3	30	4.8	53	3.3	37	3.7	62	5.7	52	6.6	60	12.3	51	5.4	49	6.3	57		
White	2135	4061	1594	75	365	17	541	25	4.6	51	3.9	44	3.9	65	6.3	58	6.9	63	11.2	47	7.2	66	7.5	68		
Two or More Races	92	4002	68	74	9	10	24	26	4.5	50	3.8	42	3.7	62	6.0	55	6.3	57	11.2	46	6.8	62	6.9	63		
No Information Provided	6	4103	4	67	1	17	2	33	5.5	61	5.5	61	3.3	56	6.2	56	7.0	64	13.0	54	5.7	52	7.0	64		
Economically Disadvantaged	Yes	6796	3938	4529	67	741	11	2267	33	4.4	48	3.9	43	3.5	58	5.7	52	6.3	57	10.7	44	6.5	59	6.8	61	
	No	3540	4076	2682	76	639	18	858	24	4.7	52	4.1	46	3.9	65	6.3	57	6.8	62	11.6	48	7.2	65	7.5	68	
No Information Provided	1	---	---	---	---	---	---	---	---	---	---	---	---	---	---	---	---	---	---	---	---	---	---	---		
Title I, Part A	Participants	7534	3990	5302	70	1021	14	2232	30	4.6	51	4.0	45	3.6	61	5.8	53	6.5	59	11.1	46	6.7	61	7.0	63	
	Nonparticipants	2802	3971	1909	68	359	13	893	32	4.3	48	3.7	41	3.6	60	5.9	54	6.5	59	10.7	45	6.8	62	7.1	64	
No Information Provided	1	---	---	---	---	---	---	---	---	---	---	---	---	---	---	---	---	---	---	---	---	---	---	---		
Migrant	Yes	173	3783	97	56	5	3	76	44	3.7	41	3.4	38	3.2	53	5.1	46	5.7	52	9.1	38	6.1	55	6.2	56	
	No	10158	3989	7111	70	1375	14	3047	30	4.5	50	3.9	44	3.6	61	5.9	54	6.5	59	11.0	46	6.7	61	7.0	64	
No Information Provided	6	3753	3	50	0	0	3	50	2.5	28	3.0	33	2.8	47	5.7	52	5.7	52	9.5	40	6.2	56	6.3	58		
Limited English Proficient	Current LEP	803	3541	256	32	7	1	547	68	2.6	29	2.7	30	2.4	40	4.2	38	4.7	43	7.5	31	4.5	41	5.1	46	
	Non-LEP (Monitored 1st Year)	88	3908	58	66	3	3	30	34	4.3	48	4.0	44	3.5	59	5.6	51	6.3	57	10.4	43	6.2	57	6.2	56	
	Non-LEP (Monitored 2nd Year)	129	3940	90	70	9	7	39	30	4.8	53	4.4	49	3.4	56	5.5	50	6.2	56	10.7	44	6.4	58	6.5	59	
	Other Non-LEP	9316	4025	6807	73	1361	15	2509	27	4.6	51	4.0	45	3.7	62	6.0	55	6.6	60	11.3	47	6.9	63	7.2	65	
No Information Provided	1	---	---	---	---	---	---	---	---	---	---	---	---	---	---	---	---	---	---	---	---	---	---	---		
Bilingual	Participants	2	---	---	---	---	---	---	---	---	---	---	---	---	---	---	---	---	---	---	---	---	---	---		
	Nonparticipants	10331	3985	7208	70	1380	13	3123	30	4.5	50	3.9	44	3.6	61	5.9	53	6.5	59	11.0	46	6.7	61	7.0	64	
No Information Provided	4	---	---	---	---	---	---	---	---	---	---	---	---	---	---	---	---	---	---	---	---	---	---	---		
ESL	Participants	783	3549	253	32	8	1	530	68	2.7	29	2.8	31	2.4	40	4.3	39	4.7	43	7.6	32	4.6	41	5.1	46	
	Nonparticipants	9550	4021	6957	73	1372	14	2593	27	4.6	51	4.0	45	3.7	62	6.0	55	6.6	60	11.3	47	6.9	63	7.1	65	
No Information Provided	4	---	---	---	---	---	---	---	---	---	---	---	---	---	---	---	---	---	---	---	---	---	---	---		
Special Education	Yes	608	3406	114	19	5	1	494	81	2.0	22	1.7	19	2.2	37	3.7	34	4.2	39	6.8	28	4.1	37	4.4	40	
	No	9728	4021	7097	73	1375	14	2631	27	4.6	51	4.1	45	3.7	62	6.0	55	6.6	60	11.3	47	6.9	63	7.2	65	
No Information Provided	1	---	---	---	---	---	---	---	---	---	---	---	---	---	---	---	---	---	---	---	---	---	---	---		
Gifted/Talented	Participants	820	4426	755	92	338	41	65	8	6.0	66	5.1	56	4.7	78	7.3	67	8.0	72	14.4	60	8.6	78	8.8	80	
	Nonparticipants	9516	3947	6456	68	1042	11	3060	32	4.3	48	3.8	43	3.5	59	5.7	52	6.3	58	10.7	45	6.6	60	6.8	62	
No Information Provided	1	---	---	---	---	---	---	---	---	---	---	---	---	---	---	---	---	---	---	---	---	---	---	---		
At-Risk	Yes	4911	3726	2491	51	143	3	2420	49	3.5	39	3.2	35	3.0	50	4.9	45	5.5	50	9.0	37	5.6	51	5.9	54	
	No	5426	4220	4720	87	1237	23	706	13	5.4	59	4.6	52	4.2	70	6.7	61	7.4	67	12.8	53	7.8	71	8.0	73	
No Information Provided	0	---	---	---	---	---	---	---	---	---	---	---	---	---	---	---	---	---	---	---	---	---	---	---		
Career/Technical Education	Participants	7343	3957	5003	68	853	12	2340	32	4.3	48	3.8	42	3.6	60	5.8	52	6.4	58	10.8	45	6.6	60	6.9	63	
	Nonparticipants	2992	4054	2207	74	527	18	785	26	4.8	53	4.3	47	3.8	63	6.1	56	6.7	61	11.6	48	7.0	64	7.1	65	
No Information Provided	2	---	---	---	---	---	---	---	---	---	---	---	---	---	---	---	---	---	---	---	---	---	---	---		



STATE OF TEXAS ASSESSMENTS OF ACADEMIC READINESS

Constructed Responses Summary Report

ENGLISH III

All Students

STATEWIDE

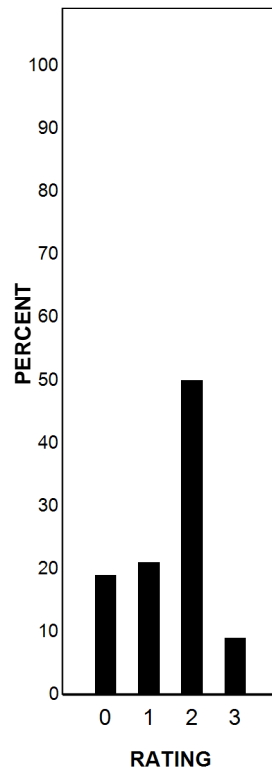
Report Date: SUMMER 2016
Date of Testing: SPRING 2016

--- = No Data Reported For Fewer Than Five Students

Short Answer Rating Summary

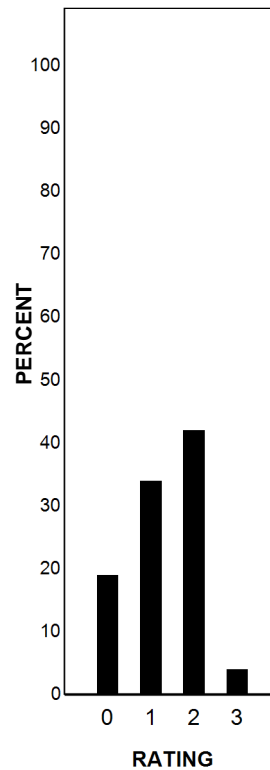
Single Selection

Rating	#	%
0	1991	19
1	2220	21
2	5169	50
3	957	9
Total	10337	100



Paired Selections

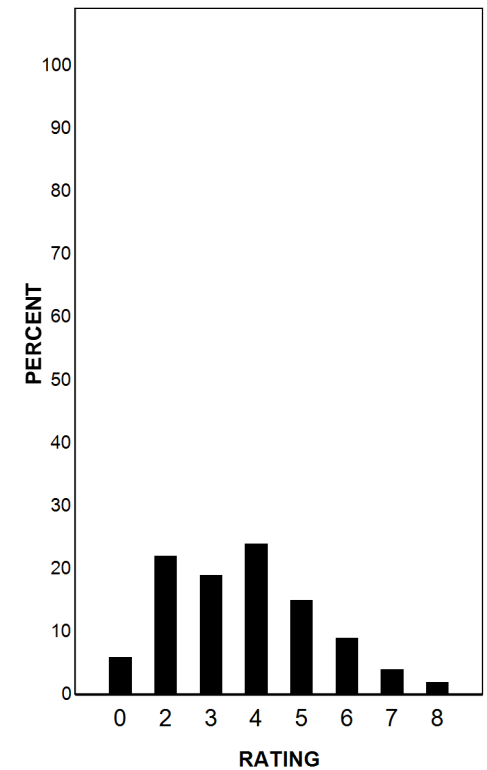
Rating	#	%
0	2005	19
1	3551	34
2	4328	42
3	453	4
Total	10337	100



Written Composition Rating Summary

Analytical Composition

Rating	#	%
0	591	6
2	2265	22
3	1935	19
4	2468	24
5	1564	15
6	932	9
7	405	4
8	177	2
Total	10337	100



Each Composition has been scored independently by two readers. The written composition rating of 0-8 represents the summation of these scores.



STATE OF TEXAS ASSESSMENTS OF ACADEMIC READINESS

Summary Report

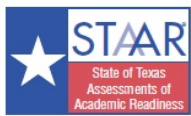
ENGLISH III

First-Time Tested Students

STATEWIDE

Report Date: SUMMER 2016
Date of Testing: SPRING 2016

Administration Summary			Number of Students Tested	Average Scale Score	PASSED				DID NOT PASS		Results for Each Reporting Category															
Number	Percent	Level II: Satisfactory			Level III: Advanced		Level I: Unsatisfactory		1				2		3		4		5		6					
Students Tested	10337								88	Understanding/ Analysis Across Genres				Understanding/ Analysis of Literary Texts		Understanding/ Analysis of Informational Texts		Composition		Revision		Editing				
Students Not Tested										Short Answer Rating (Single Selection)		Short Answer Rating (Paired Selections)												Multiple Choice		
Absent	1357								12																	
Other	26								0																	
Total Documents Submitted	11720								100																	
Legend																										
--- = No Data Reported For Fewer Than Five Students																										
Number of Points Possible																										
9		9		6		11		11		24		11		11												
Number of Points Scored																										
#	%	#	%	#	%	#	%	#	%	#	%	#	%	#	%	#	%	#	%	#	%					
All Students	10337	3985	7211	70	1380	13	3126	30	4.5	50	3.9	44	3.6	61	5.9	53	6.5	59	11.0	46	6.7	61	7.0	64		
Male	5343	3886	3315	62	518	10	2028	38	3.9	43	3.5	39	3.4	57	5.5	50	6.2	56	10.2	43	6.5	59	6.6	60		
Female	4993	4092	3895	78	862	17	1098	22	5.1	57	4.4	49	3.9	65	6.3	57	6.8	62	11.8	49	7.0	64	7.4	68		
No Information Provided	1	---	---	---	---	---	---	---	---	---	---	---	---	---	---	---	---	---	---	---	---	---	---	---		
Hispanic/Latino	7188	3973	4990	69	899	13	2198	31	4.5	50	4.0	44	3.6	60	5.8	53	6.4	58	11.0	46	6.6	60	6.9	63		
American Indian or Alaska Native	25	3879	15	60	4	16	10	40	4.2	47	4.2	47	3.0	51	5.5	50	5.8	52	11.3	47	6.3	57	6.3	57		
Asian	92	4244	71	77	33	36	21	23	5.0	56	4.3	47	4.2	70	6.6	60	7.2	66	13.2	55	7.6	69	8.0	73		
Black or African American	789	3858	462	59	69	9	327	41	4.2	47	3.6	40	3.4	56	5.3	48	5.9	54	10.0	41	6.1	56	6.5	59		
Native Hawaiian or Other Pacific Islander	10	3941	7	70	0	0	3	30	4.8	53	3.3	37	3.7	62	5.7	52	6.6	60	12.3	51	5.4	49	6.3	57		
White	2135	4061	1594	75	365	17	541	25	4.6	51	3.9	44	3.9	65	6.3	58	6.9	63	11.2	47	7.2	66	7.5	68		
Two or More Races	92	4002	68	74	9	10	24	26	4.5	50	3.8	42	3.7	62	6.0	55	6.3	57	11.2	46	6.8	62	6.9	63		
No Information Provided	6	4103	4	67	1	17	2	33	5.5	61	5.5	61	3.3	56	6.2	56	7.0	64	13.0	54	5.7	52	7.0	64		
Economically Disadvantaged	Yes	6796	3938	4529	67	741	11	2267	33	4.4	48	3.9	43	3.5	58	5.7	52	6.3	57	10.7	44	6.5	59	6.8	61	
	No	3540	4076	2682	76	639	18	858	24	4.7	52	4.1	46	3.9	65	6.3	57	6.8	62	11.6	48	7.2	65	7.5	68	
No Information Provided	1	---	---	---	---	---	---	---	---	---	---	---	---	---	---	---	---	---	---	---	---	---	---	---		
Title I, Part A	Participants	7534	3990	5302	70	1021	14	2232	30	4.6	51	4.0	45	3.6	61	5.8	53	6.5	59	11.1	46	6.7	61	7.0	63	
	Nonparticipants	2802	3971	1909	68	359	13	893	32	4.3	48	3.7	41	3.6	60	5.9	54	6.5	59	10.7	45	6.8	62	7.1	64	
No Information Provided	1	---	---	---	---	---	---	---	---	---	---	---	---	---	---	---	---	---	---	---	---	---	---	---		
Migrant	Yes	173	3783	97	56	5	3	76	44	3.7	41	3.4	38	3.2	53	5.1	46	5.7	52	9.1	38	6.1	55	6.2	56	
	No	10158	3989	7111	70	1375	14	3047	30	4.5	50	3.9	44	3.6	61	5.9	54	6.5	59	11.0	46	6.7	61	7.0	64	
No Information Provided	6	3753	3	50	0	0	3	50	2.5	28	3.0	33	2.8	47	5.7	52	5.7	52	9.5	40	6.2	56	6.3	58		
Limited English Proficient	Current LEP	803	3541	256	32	7	1	547	68	2.6	29	2.7	30	2.4	40	4.2	38	4.7	43	7.5	31	4.5	41	5.1	46	
	Non-LEP (Monitored 1st Year)	88	3908	58	66	3	3	30	34	4.3	48	4.0	44	3.5	59	5.6	51	6.3	57	10.4	43	6.2	57	6.2	56	
	Non-LEP (Monitored 2nd Year)	129	3940	90	70	9	7	39	30	4.8	53	4.4	49	3.4	56	5.5	50	6.2	56	10.7	44	6.4	58	6.5	59	
	Other Non-LEP	9316	4025	6807	73	1361	15	2509	27	4.6	51	4.0	45	3.7	62	6.0	55	6.6	60	11.3	47	6.9	63	7.2	65	
No Information Provided	1	---	---	---	---	---	---	---	---	---	---	---	---	---	---	---	---	---	---	---	---	---	---	---		
Bilingual	Participants	2	---	---	---	---	---	---	---	---	---	---	---	---	---	---	---	---	---	---	---	---	---	---		
	Nonparticipants	10331	3985	7208	70	1380	13	3123	30	4.5	50	3.9	44	3.6	61	5.9	53	6.5	59	11.0	46	6.7	61	7.0	64	
No Information Provided	4	---	---	---	---	---	---	---	---	---	---	---	---	---	---	---	---	---	---	---	---	---	---	---		
ESL	Participants	783	3549	253	32	8	1	530	68	2.7	29	2.8	31	2.4	40	4.3	39	4.7	43	7.6	32	4.6	41	5.1	46	
	Nonparticipants	9550	4021	6957	73	1372	14	2593	27	4.6	51	4.0	45	3.7	62	6.0	55	6.6	60	11.3	47	6.9	63	7.1	65	
No Information Provided	4	---	---	---	---	---	---	---	---	---	---	---	---	---	---	---	---	---	---	---	---	---	---	---		
Special Education	Yes	608	3406	114	19	5	1	494	81	2.0	22	1.7	19	2.2	37	3.7	34	4.2	39	6.8	28	4.1	37	4.4	40	
	No	9728	4021	7097	73	1375	14	2631	27	4.6	51	4.1	45	3.7	62	6.0	55	6.6	60	11.3	47	6.9	63	7.2	65	
No Information Provided	1	---	---	---	---	---	---	---	---	---	---	---	---	---	---	---	---	---	---	---	---	---	---	---		
Gifted/Talented	Participants	820	4426	755	92	338	41	65	8	6.0	66	5.1	56	4.7	78	7.3	67	8.0	72	14.4	60	8.6	78	8.8	80	
	Nonparticipants	9516	3947	6456	68	1042	11	3060	32	4.3	48	3.8	43	3.5	59	5.7	52	6.3	58	10.7	45	6.6	60	6.8	62	
No Information Provided	1	---	---	---	---	---	---	---	---	---	---	---	---	---	---	---	---	---	---	---	---	---	---	---		
At-Risk	Yes	4911	3726	2491	51	143	3	2420	49	3.5	39	3.2	35	3.0	50	4.9	45	5.5	50	9.0	37	5.6	51	5.9	54	
	No	5426	4220	4720	87	1237	23	706	13	5.4	59	4.6	52	4.2	70	6.7	61	7.4	67	12.8	53	7.8	71	8.0	73	
No Information Provided	0	---	---	---	---	---	---	---	---	---	---	---	---	---	---	---	---	---	---	---	---	---	---	---		
Career/Technical Education	Participants	7343	3957	5003	68	853	12	2340	32	4.3	48	3.8	42	3.6	60	5.8	52	6.4	58	10.8	45	6.6	60	6.9	63	
	Nonparticipants	2992	4054	2207	74	527	18	785	26	4.8	53	4.3	47	3.8	63	6.1	56	6.7	61	11.6	48	7.0	64	7.1	65	
No Information Provided	2	---	---	---	---	---	---	---	---	---	---	---	---	---	---	---	---	---	---	---	---	---	---	---		



STATE OF TEXAS ASSESSMENTS OF ACADEMIC READINESS

Constructed Responses Summary Report

ENGLISH III

First-Time Tested Students

STATEWIDE

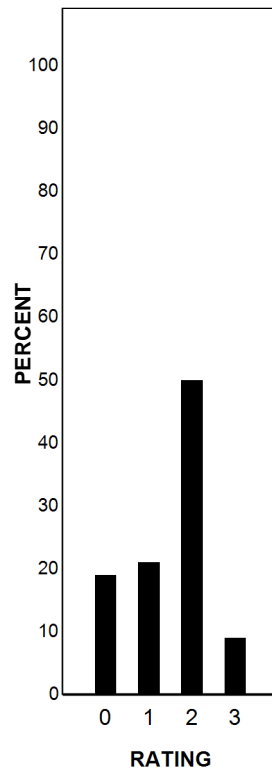
Report Date: SUMMER 2016
Date of Testing: SPRING 2016

--- = No Data Reported For Fewer Than Five Students

Short Answer Rating Summary

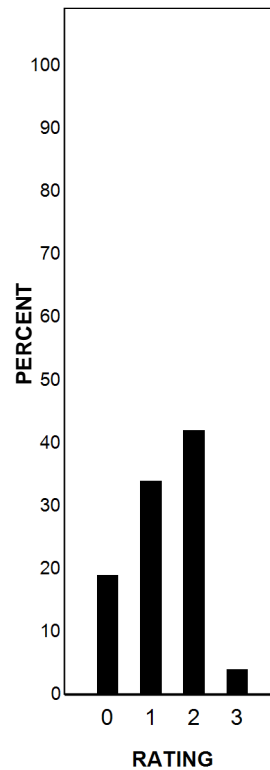
Single Selection

Rating	#	%
0	1991	19
1	2220	21
2	5169	50
3	957	9
Total	10337	100



Paired Selections

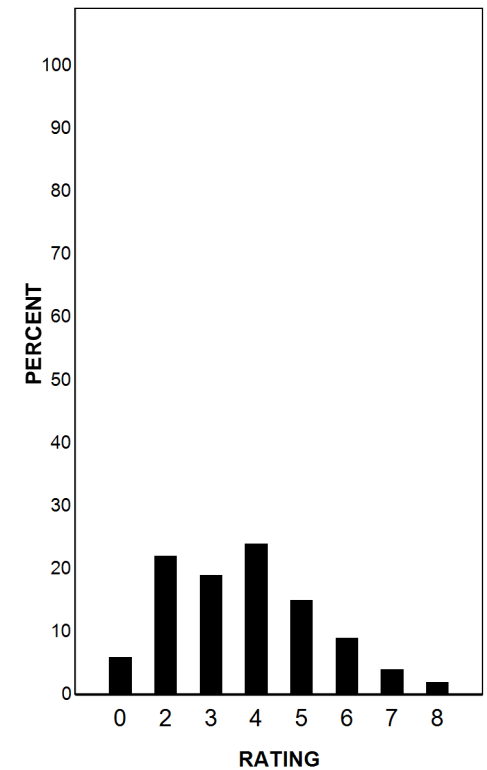
Rating	#	%
0	2005	19
1	3551	34
2	4328	42
3	453	4
Total	10337	100



Written Composition Rating Summary

Analytical Composition

Rating	#	%
0	591	6
2	2265	22
3	1935	19
4	2468	24
5	1564	15
6	932	9
7	405	4
8	177	2
Total	10337	100



Each Composition has been scored independently by two readers. The written composition rating of 0-8 represents the summation of these scores.



STATE OF TEXAS ASSESSMENTS OF ACADEMIC READINESS

Combined Summary Report

ENGLISH III

All Students

STATEWIDE

Report Date: SUMMER 2016
Date of Testing: SPRING 2016

Legend		STAAR			Total		
--- = No Data Reported For Fewer Than Five Students		Number of Students Tested	Level II: Satisfactory		Number of Students Tested	Level II: Satisfactory	
			#	%		#	%
All Students		10337	7211	70	10337	7211	70
Male		5343	3315	62	5343	3315	62
Female		4993	3895	78	4993	3895	78
No Information Provided		1	---	---	1	---	---
Hispanic/Latino		7188	4990	69	7188	4990	69
American Indian or Alaska Native		25	15	60	25	15	60
Asian		92	71	77	92	71	77
Black or African American		789	462	59	789	462	59
Native Hawaiian or Other Pacific Islander		10	7	70	10	7	70
White		2135	1594	75	2135	1594	75
Two or More Races		92	68	74	92	68	74
No Information Provided		6	4	67	6	4	67
Economically Disadvantaged		6796	4529	67	6796	4529	67
Yes		3540	2682	76	3540	2682	76
No		1	---	---	1	---	---
No Information Provided							
Title I, Part A		7534	5302	70	7534	5302	70
Participants		2802	1909	68	2802	1909	68
Nonparticipants		1	---	---	1	---	---
No Information Provided							
Migrant		173	97	56	173	97	56
Yes		10158	7111	70	10158	7111	70
No		6	3	50	6	3	50
No Information Provided							
Limited English Proficient		803	256	32	803	256	32
Current LEP		88	58	66	88	58	66
Non-LEP (Monitored 1st Year)		129	90	70	129	90	70
Non-LEP (Monitored 2nd Year)		9316	6807	73	9316	6807	73
Other Non-LEP		1	---	---	1	---	---
No Information Provided							
Bilingual		2	---	---	2	---	---
Participants		10331	7208	70	10331	7208	70
Nonparticipants		4	---	---	4	---	---
No Information Provided							
ESL		783	253	32	783	253	32
Participants		9550	6957	73	9550	6957	73
Nonparticipants		4	---	---	4	---	---
No Information Provided							
Special Education		608	114	19	608	114	19
Yes		9728	7097	73	9728	7097	73
No		1	---	---	1	---	---
No Information Provided							
Gifted/Talented		820	755	92	820	755	92
Participants		9516	6456	68	9516	6456	68
Nonparticipants		1	---	---	1	---	---
No Information Provided							
At-Risk		4911	2491	51	4911	2491	51
Yes		5426	4720	87	5426	4720	87
No		0	---	---	0	---	---
No Information Provided							
Career/Technical Education		7343	5003	68	7343	5003	68
Participants		2992	2207	74	2992	2207	74
Nonparticipants		2	---	---	2	---	---
No Information Provided							



STATE OF TEXAS ASSESSMENTS OF ACADEMIC READINESS

Combined Summary Report

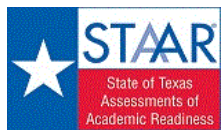
ENGLISH III

First-Time Tested Students

STATEWIDE

Report Date: SUMMER 2016
Date of Testing: SPRING 2016

Legend		STAAR			Total		
--- = No Data Reported For Fewer Than Five Students		Number of Students Tested	Level II: Satisfactory		Number of Students Tested	Level II: Satisfactory	
			#	%		#	%
All Students		10337	7211	70	10337	7211	70
Male		5343	3315	62	5343	3315	62
Female		4993	3895	78	4993	3895	78
No Information Provided		1	---	---	1	---	---
Hispanic/Latino		7188	4990	69	7188	4990	69
American Indian or Alaska Native		25	15	60	25	15	60
Asian		92	71	77	92	71	77
Black or African American		789	462	59	789	462	59
Native Hawaiian or Other Pacific Islander		10	7	70	10	7	70
White		2135	1594	75	2135	1594	75
Two or More Races		92	68	74	92	68	74
No Information Provided		6	4	67	6	4	67
Economically Disadvantaged		6796	4529	67	6796	4529	67
Yes		3540	2682	76	3540	2682	76
No		1	---	---	1	---	---
No Information Provided		1	---	---	1	---	---
Title I, Part A		7534	5302	70	7534	5302	70
Participants		2802	1909	68	2802	1909	68
Nonparticipants		1	---	---	1	---	---
No Information Provided		1	---	---	1	---	---
Migrant		173	97	56	173	97	56
Yes		10158	7111	70	10158	7111	70
No		6	3	50	6	3	50
No Information Provided		6	3	50	6	3	50
Limited English Proficient		803	256	32	803	256	32
Current LEP		88	58	66	88	58	66
Non-LEP (Monitored 1st Year)		129	90	70	129	90	70
Non-LEP (Monitored 2nd Year)		9316	6807	73	9316	6807	73
Other Non-LEP		1	---	---	1	---	---
No Information Provided		1	---	---	1	---	---
Bilingual		2	---	---	2	---	---
Participants		10331	7208	70	10331	7208	70
Nonparticipants		4	---	---	4	---	---
No Information Provided		4	---	---	4	---	---
ESL		783	253	32	783	253	32
Participants		9550	6957	73	9550	6957	73
Nonparticipants		4	---	---	4	---	---
No Information Provided		4	---	---	4	---	---
Special Education		608	114	19	608	114	19
Yes		9728	7097	73	9728	7097	73
No		1	---	---	1	---	---
No Information Provided		1	---	---	1	---	---
Gifted/Talented		820	755	92	820	755	92
Participants		9516	6456	68	9516	6456	68
Nonparticipants		1	---	---	1	---	---
No Information Provided		1	---	---	1	---	---
At-Risk		4911	2491	51	4911	2491	51
Yes		5426	4720	87	5426	4720	87
No		0	---	---	0	---	---
No Information Provided		0	---	---	0	---	---
Career/Technical Education		7343	5003	68	7343	5003	68
Participants		2992	2207	74	2992	2207	74
Nonparticipants		2	---	---	2	---	---
No Information Provided		2	---	---	2	---	---



STATEWIDE

STATE OF TEXAS ASSESSMENTS OF ACADEMIC READINESS

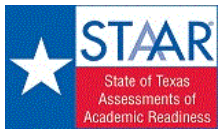
Summary Report

ENGLISH III

All Students

Report Date: SUMMER 2017
Date of Testing: SPRING 2017

Administration Summary			Number of Students Tested	Average Scale Score	Did Not Meet	Approaches	Meets	Masters	Results for Each Reporting Category																	
									1		2		3		4		5		6							
Number	Percent	Understanding/ Analysis Across Genres							Understanding/ Analysis of Literary Texts	Understanding/ Analysis of Informational Texts	Composition	Revision	Editing													
Students Tested	10076													95												
Students Not Tested																										
Absent	459													4												
Other	72	1																								
Total Documents Submitted	10607	100																								
Legend									Number of Students Tested	Average Scale Score	Did Not Meet	Approaches	Meets	Masters	Number of Points Possible											
--- = No Data Reported For Fewer Than Five Students															8		13		13		16		9		9	
			Number of Points Scored																							
			#	%	#	%	#	%							#	%	#	%	#	%						
All Students			10076	3970	2955	29	7121	71	5149	51	1141	11	4.3	53	7.3	56	7.4	57	7.1	44	5.5	61	5.8	65		
Male			5081	3901	1778	35	3303	65	2298	45	482	9	4.1	51	6.9	53	7.2	55	6.7	42	5.3	59	5.5	61		
Female			4995	4039	1177	24	3818	76	2851	57	659	13	4.5	56	7.6	59	7.7	59	7.6	47	5.7	63	6.2	69		
No Information Provided			0	---	---	---	---	---	---	---	---	---	---	---	---	---	---	---	---	---	---	---	---	---		
Hispanic/Latino			7168	3973	2042	28	5126	72	3677	51	775	11	4.2	53	7.3	56	7.4	57	7.3	45	5.5	61	5.8	65		
American Indian or Alaska Native			17	4004	3	18	14	82	11	65	0	0	4.2	53	7.3	56	8.1	62	7.3	46	5.7	63	6.2	69		
Asian			83	4305	11	13	72	87	66	80	28	34	5.1	64	8.6	66	8.8	68	9.1	57	6.7	74	7.1	79		
Black or African American			1317	3817	549	42	768	58	493	37	81	6	3.9	49	6.5	50	6.8	52	6.0	38	4.9	55	5.4	59		
Native Hawaiian or Other Pacific Islander			3	---	---	---	---	---	---	---	---	---	---	---	---	---	---	---	---	---	---	---	---	---		
White			1407	4071	327	23	1080	77	852	61	244	17	4.7	59	7.8	60	7.9	61	7.2	45	5.9	66	6.3	70		
Two or More Races			81	4019	23	28	58	72	48	59	12	15	4.4	54	7.5	58	7.9	61	7.0	44	5.7	64	5.9	66		
No Information Provided			0	---	---	---	---	---	---	---	---	---	---	---	---	---	---	---	---	---	---	---	---	---		
Economically Disadvantaged	Yes		7250	3937	2280	31	4970	69	3505	48	669	9	4.1	52	7.1	55	7.3	56	7.0	44	5.4	60	5.7	63		
	No		2826	4054	675	24	2151	76	1644	58	472	17	4.6	58	7.7	59	7.8	60	7.3	46	5.8	65	6.2	69		
	No Information Provided		0	---	---	---	---	---	---	---	---	---	---	---	---	---	---	---	---	---	---	---	---	---		
Title I, Part A	Participants		7798	3981	2170	28	5628	72	4066	52	888	11	4.3	53	7.3	56	7.5	57	7.3	46	5.5	61	5.8	65		
	Nonparticipants		2276	3930	784	34	1492	66	1083	48	253	11	4.3	54	7.1	54	7.3	56	6.4	40	5.4	60	5.8	64		
	No Information Provided		2	---	---	---	---	---	---	---	---	---	---	---	---	---	---	---	---	---	---	---	---	---		
Migrant	Yes		144	3832	54	38	90	63	57	40	7	5	3.9	49	6.7	51	6.6	51	6.4	40	5.0	56	5.4	60		
	No		9930	3972	2899	29	7031	71	5092	51	1134	11	4.3	53	7.3	56	7.5	57	7.1	45	5.5	61	5.8	65		
	No Information Provided		2	---	---	---	---	---	---	---	---	---	---	---	---	---	---	---	---	---	---	---	---	---		
Limited English Proficient	Current LEP		889	3591	577	65	312	35	137	15	3	0	2.9	37	5.4	41	5.7	44	5.1	32	3.8	43	4.4	48		
	Non-LEP (Monitored 1st Year)		109	3998	31	28	78	72	60	55	8	7	4.5	56	7.4	57	7.8	60	7.4	47	5.5	61	5.7	63		
	Non-LEP (Monitored 2nd Year)		93	4001	23	25	70	75	47	51	11	12	4.2	53	7.5	57	7.4	57	7.9	49	5.4	60	6.0	66		
	Other Non-LEP		8984	4007	2323	26	6661	74	4905	55	1119	12	4.4	55	7.5	57	7.6	59	7.3	46	5.7	63	6.0	66		
	No Information Provided		1	---	---	---	---	---	---	---	---	---	---	---	---	---	---	---	---	---	---	---	---	---		
Bilingual	Participants		4	---	---	---	---	---	---	---	---	---	---	---	---	---	---	---	---	---	---	---	---	---		
	Nonparticipants		10071	3970	2953	29	7118	71	5146	51	1140	11	4.3	53	7.3	56	7.4	57	7.1	44	5.5	61	5.8	65		
	No Information Provided		1	---	---	---	---	---	---	---	---	---	---	---	---	---	---	---	---	---	---	---	---	---		
ESL	Participants		871	3589	567	65	304	35	132	15	3	0	2.9	36	5.4	41	5.7	44	5.1	32	3.8	43	4.3	48		
	Nonparticipants		9204	4006	2387	26	6817	74	5017	55	1138	12	4.4	55	7.4	57	7.6	59	7.3	46	5.7	63	6.0	66		
	No Information Provided		1	---	---	---	---	---	---	---	---	---	---	---	---	---	---	---	---	---	---	---	---	---		
Special Education	Yes		658	3460	524	80	134	20	57	9	4	1	2.7	33	4.6	36	4.9	38	4.1	26	3.4	38	3.7	41		
	No		9417	4005	2430	26	6987	74	5092	54	1137	12	4.4	55	7.4	57	7.6	59	7.3	46	5.6	63	6.0	67		
	No Information Provided		1	---	---	---	---	---	---	---	---	---	---	---	---	---	---	---	---	---	---	---	---	---		
Gifted/Talented	Participants		739	4349	50	7	689	93	625	85	259	35	5.5	69	9.1	70	9.2	71	8.8	55	7.0	77	7.3	81		
	Nonparticipants		9335	3940	2904	31	6431	69	4523	48	882	9	4.2	52	7.1	55	7.3	56	7.0	44	5.4	60	5.7	64		
	No Information Provided		2	---	---	---	---	---	---	---	---	---	---	---	---	---	---	---	---	---	---	---	---	---		
At-Risk	Yes		5206	3758	2396	46	2810	54	1584	30	144	3	3.6	45	6.2	48	6.5	50	6.0	38	4.6	52	5.0	56		
	No		4869	4196	559	11	4310	89	3564	73	997	20	5.0	63	8.4	64	8.5	65	8.3	52	6.4	71	6.7	74		
	No Information Provided		1	---	---	---	---	---	---	---	---	---	---	---	---	---	---	---	---	---	---	---	---	---		
Career/Technical Education	Participants		7478	3943	2328	31	5150	69	3627	49	752	10	4.2	53	7.1	55	7.3	56	6.9	43	5.4	60	5.8	64		
	Nonparticipants		2595	4045	627	24	1968	76	1519	59	389	15	4.4	55	7.6	59	7.8	60	7.8	49	5.7	64	6.0	67		
	No Information Provided		3	---	---	---	---	---	---	---	---	---	---	---	---	---	---	---	---	---	---	---	---	---		



STATEWIDE

STATE OF TEXAS ASSESSMENTS OF ACADEMIC READINESS
Constructed Responses Summary Report
ENGLISH III
All Students

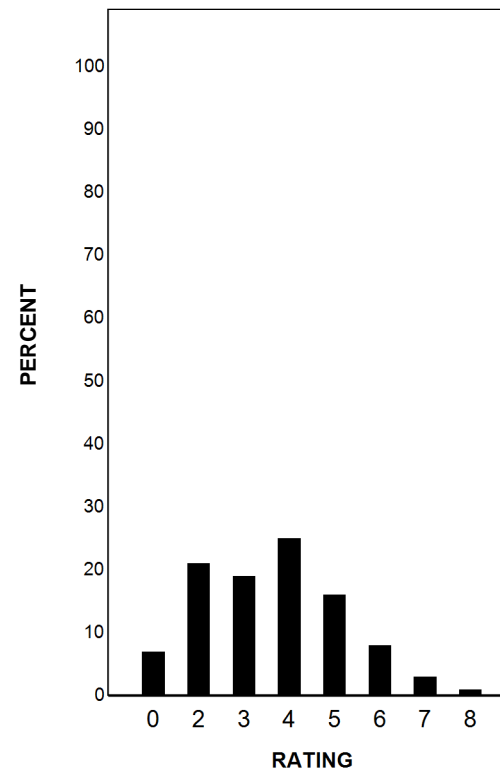
Report Date: SUMMER 2017
Date of Testing: SPRING 2017

--- = No Data Reported For Fewer Than Five Students

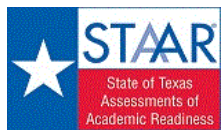
Written Composition Rating Summary

Analytical Composition

Rating	#	%
0	678	7
2	2153	21
3	1933	19
4	2513	25
5	1604	16
6	805	8
7	300	3
8	90	1
Total	10076	100



Each composition has been scored independently by two readers. The written composition rating of 0-8 represents the summation of these scores.



STATEWIDE

STATE OF TEXAS ASSESSMENTS OF ACADEMIC READINESS

Summary Report

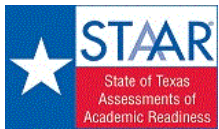
ENGLISH III

First-Time Tested Students

Report Date: SUMMER 2017

Date of Testing: SPRING 2017

Administration Summary			Number of Students Tested	Average Scale Score	Did Not Meet		Approaches		Meets		Masters		Results for Each Reporting Category																					
													1		2		3		4		5		6											
													Understanding/ Analysis Across Genres		Understanding/ Analysis of Literary Texts		Understanding/ Analysis of Informational Texts		Composition		Revision		Editing											
													Number of Points Possible																					
													8		13		13		16		9		9											
													Number of Points Scored																					
Legend													#	%	#	%	#	%	#	%	#	%	#	%	#	%	#	%	#	%	#	%		
--- = No Data Reported For Fewer Than Five Students																																		
All Students													10057	3971	2941	29	7116	71	5147	51	1141	11	4.3	53	7.3	56	7.4	57	7.1	44	5.5	61	5.8	65
Male													5066	3902	1766	35	3300	65	2297	45	482	10	4.1	51	6.9	53	7.2	55	6.7	42	5.3	59	5.5	61
Female			4991	4040	1175	24	3816	76	2850	57	659	13	4.5	56	7.6	59	7.7	59	7.6	47	5.7	63	6.2	69										
No Information Provided			0	---	---	---	---	---	---	---	---	---	---	---	---	---	---	---	---	---	---	---	---	---										
Hispanic/Latino			7150	3974	2029	28	5121	72	3675	51	775	11	4.2	53	7.3	56	7.5	57	7.3	45	5.5	61	5.8	65										
American Indian or Alaska Native			17	4004	3	18	14	82	11	65	0	0	4.2	53	7.3	56	8.1	62	7.3	46	5.7	63	6.2	69										
Asian			83	4305	11	13	72	87	66	80	28	34	5.1	64	8.6	66	8.8	68	9.1	57	6.7	74	7.1	79										
Black or African American			1317	3817	549	42	768	58	493	37	81	6	3.9	49	6.5	50	6.8	52	6.0	38	4.9	55	5.4	59										
Native Hawaiian or Other Pacific Islander			3	---	---	---	---	---	---	---	---	---	---	---	---	---	---	---	---	---	---	---	---	---										
White			1406	4072	326	23	1080	77	852	61	244	17	4.7	59	7.8	60	7.9	61	7.2	45	5.9	66	6.3	70										
Two or More Races			81	4019	23	28	58	72	48	59	12	15	4.4	54	7.5	58	7.9	61	7.0	44	5.7	64	5.9	66										
No Information Provided			0	---	---	---	---	---	---	---	---	---	---	---	---	---	---	---	---	---	---	---	---	---										
Economically Disadvantaged			Yes	7235	3938	2269	31	4966	69	3503	48	669	9	4.1	52	7.1	55	7.3	56	7.0	44	5.4	60	5.7	63									
			No	2822	4055	672	24	2150	76	1644	58	472	17	4.6	58	7.7	59	7.8	60	7.3	46	5.8	65	6.2	69									
No Information Provided			0	---	---	---	---	---	---	---	---	---	---	---	---	---	---	---	---	---	---	---	---	---										
Title I, Part A			Participants	7782	3982	2158	28	5624	72	4065	52	888	11	4.3	53	7.3	56	7.5	58	7.3	46	5.5	61	5.9	65									
			Nonparticipants	2273	3930	782	34	1491	66	1082	48	253	11	4.3	54	7.1	54	7.3	56	6.4	40	5.4	60	5.8	64									
No Information Provided			2	---	---	---	---	---	---	---	---	---	---	---	---	---	---	---	---	---	---	---	---	---										
Migrant			Yes	144	3832	54	38	90	63	57	40	7	5	3.9	49	6.7	51	6.6	51	6.4	40	5.0	56	5.4	60									
			No	9911	3973	2885	29	7026	71	5090	51	1134	11	4.3	53	7.3	56	7.5	57	7.1	45	5.5	61	5.8	65									
No Information Provided			2	---	---	---	---	---	---	---	---	---	---	---	---	---	---	---	---	---	---	---	---	---										
Limited English Proficient			Current LEP	885	3590	575	65	310	35	137	15	3	0	2.9	37	5.4	41	5.7	44	5.1	32	3.8	43	4.3	48									
			Non-LEP (Monitored 1st Year)	109	3998	31	28	78	72	60	55	8	7	4.5	56	7.4	57	7.8	60	7.4	47	5.5	61	5.7	63									
			Non-LEP (Monitored 2nd Year)	93	4001	23	25	70	75	47	51	11	12	4.2	53	7.5	57	7.4	57	7.9	49	5.4	60	6.0	66									
			Other Non-LEP	8969	4007	2311	26	6658	74	4903	55	1119	12	4.4	55	7.5	57	7.6	59	7.3	46	5.7	63	6.0	67									
No Information Provided			1	---	---	---	---	---	---	---	---	---	---	---	---	---	---	---	---	---	---	---	---	---										
Bilingual			Participants	4	---	---	---	---	---	---	---	---	---	---	---	---	---	---	---	---	---	---	---	---										
			Nonparticipants	10052	3971	2939	29	7113	71	5144	51	1140	11	4.3	53	7.3	56	7.4	57	7.1	44	5.5	61	5.8	65									
No Information Provided			1	---	---	---	---	---	---	---	---	---	---	---	---	---	---	---	---	---	---	---	---	---										
ESL			Participants	867	3589	565	65	302	35	132	15	3	0	2.9	37	5.4	41	5.7	43	5.1	32	3.8	43	4.3	48									
			Nonparticipants	9189	4007	2375	26	6814	74	5015	55	1138	12	4.4	55	7.4	57	7.6	59	7.3	46	5.7	63	6.0	66									
No Information Provided			1	---	---	---	---	---	---	---	---	---	---	---	---	---	---	---	---	---	---	---	---	---										
Special Education			Yes	654	3458	522	80	132	20	57	9	4	1	2.7	34	4.6	36	4.9	38	4.1	26	3.4	37	3.7	41									
			No	9402	4006	2418	26	6984	74	5090	54	1137	12	4.4	55	7.5	57	7.6	59	7.3	46	5.6	63	6.0	67									
No Information Provided			1	---	---	---	---	---	---	---	---	---	---	---	---	---	---	---	---	---	---	---	---	---										
Gifted/Talented			Participants	739	4349	50	7	689	93	625	85	259	35	5.5	69	9.1	70	9.2	71	8.8	55	7.0	77	7.3	81									
			Nonparticipants	9316	3941	2890	31	6426	69	4521	49	882	9	4.2	52	7.1	55	7.3	56	7.0	44	5.4	60	5.7	64									
No Information Provided			2	---	---	---	---	---	---	---	---	---	---	---	---	---	---	---	---	---	---	---	---	---										
At-Risk			Yes	5191	3759	2384	46	2807	54	1583	30	144	3	3.6	45	6.2	48	6.5	50	6.0	38	4.6	52	5.0	56									
			No	4865	4196	557	11	4308	89	3563	73	997	20	5.0	63	8.4	64	8.5	65	8.3	52	6.4	71	6.7	74									
No Information Provided			1	---	---	---	---	---	---	---	---	---	---	---	---	---	---	---	---	---	---	---	---	---										
Career/Technical Education			Participants	7465	3944	2319	31	5146	69	3626	49	752	10	4.2	53	7.1	55	7.3	56	6.9	43	5.4	60	5.8	64									
			Nonparticipants	2589	4047	622	24	1967	76	1518	59	389	15	4.4	55	7.6	59	7.8	60	7.8	49	5.7	64	6.0	67									
No Information Provided			3	---	---	---	---	---	---	---	---	---	---	---	---	---	---	---	---	---	---	---	---	---										



STATEWIDE

STATE OF TEXAS ASSESSMENTS OF ACADEMIC READINESS
Constructed Responses Summary Report
ENGLISH III
First-Time Tested Students

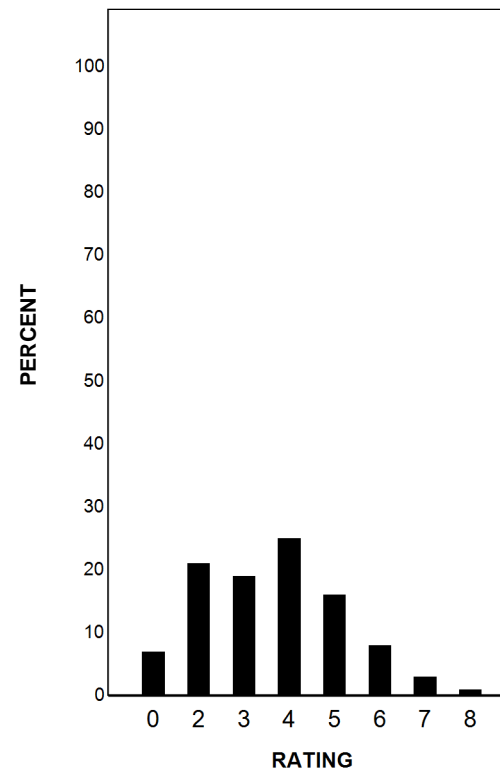
Report Date: SUMMER 2017
Date of Testing: SPRING 2017

--- = No Data Reported For Fewer Than Five Students

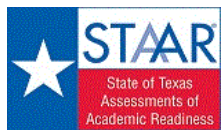
Written Composition Rating Summary

Analytical Composition

Rating	#	%
0	674	7
2	2145	21
3	1931	19
4	2510	25
5	1602	16
6	805	8
7	300	3
8	90	1
Total	10057	100



Each composition has been scored independently by two readers. The written composition rating of 0-8 represents the summation of these scores.



STATEWIDE

STATE OF TEXAS ASSESSMENTS OF ACADEMIC READINESS

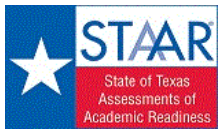
Summary Report

ENGLISH III

Retested Students

Report Date: SUMMER 2017
Date of Testing: SPRING 2017

Administration Summary			Number of Students Tested	Average Scale Score	Did Not Meet		Approaches		Meets		Masters		Results for Each Reporting Category											
													1		2		3		4		5		6	
Number	Percent	Understanding/ Analysis Across Genres											Understanding/ Analysis of Literary Texts	Understanding/ Analysis of Informational Texts	Composition	Revision	Editing							
Students Tested	19																	68						
Students Not Tested																								
Absent	9																	32						
Other	0	0																						
Total Documents Submitted	28	100																						
Legend																								
--- = No Data Reported For Fewer Than Five Students																								
#	%	#	%	#	%	#	%	#	%	#	%	#	%	#	%	#	%	#	%	#	%			
All Students	19	3551	14	74	5	26	2	11	0	0	2.3	28	5.0	38	5.9	46	4.6	29	3.7	42	4.7	53		
Male	15	3529	12	80	3	20	1	7	0	0	2.1	27	5.0	38	5.8	45	4.8	30	3.4	38	4.6	51		
Female	4	---	---	---	---	---	---	---	---	---	---	---	---	---	---	---	---	---	---	---	---	---		
No Information Provided	0	---	---	---	---	---	---	---	---	---	---	---	---	---	---	---	---	---	---	---	---	---		
Hispanic/Latino	18	3557	13	72	5	28	2	11	0	0	2.3	28	5.1	39	5.9	46	4.7	29	3.8	43	4.7	52		
American Indian or Alaska Native	0	---	---	---	---	---	---	---	---	---	---	---	---	---	---	---	---	---	---	---	---	---		
Asian	0	---	---	---	---	---	---	---	---	---	---	---	---	---	---	---	---	---	---	---	---	---		
Black or African American	0	---	---	---	---	---	---	---	---	---	---	---	---	---	---	---	---	---	---	---	---	---		
Native Hawaiian or Other Pacific Islander	0	---	---	---	---	---	---	---	---	---	---	---	---	---	---	---	---	---	---	---	---	---		
White	1	---	---	---	---	---	---	---	---	---	---	---	---	---	---	---	---	---	---	---	---	---		
Two or More Races	0	---	---	---	---	---	---	---	---	---	---	---	---	---	---	---	---	---	---	---	---	---		
No Information Provided	0	---	---	---	---	---	---	---	---	---	---	---	---	---	---	---	---	---	---	---	---	---		
Economically Disadvantaged	Yes	15	3534	11	73	4	27	2	13	0	0	2.2	28	5.2	40	5.8	45	4.8	30	3.7	41	4.4	49	
	No	4	---	---	---	---	---	---	---	---	---	---	---	---	---	---	---	---	---	---	---	---	---	
	No Information Provided	0	---	---	---	---	---	---	---	---	---	---	---	---	---	---	---	---	---	---	---	---	---	
Title I, Part A	Participants	16	3536	12	75	4	25	1	6	0	0	2.3	28	5.1	39	5.6	43	4.6	29	3.8	42	4.6	51	
	Nonparticipants	3	---	---	---	---	---	---	---	---	---	---	---	---	---	---	---	---	---	---	---	---	---	
	No Information Provided	0	---	---	---	---	---	---	---	---	---	---	---	---	---	---	---	---	---	---	---	---	---	
Migrant	Yes	0	---	---	---	---	---	---	---	---	---	---	---	---	---	---	---	---	---	---	---	---	---	
	No	19	3551	14	74	5	26	2	11	0	0	2.3	28	5.0	38	5.9	46	4.6	29	3.7	42	4.7	53	
	No Information Provided	0	---	---	---	---	---	---	---	---	---	---	---	---	---	---	---	---	---	---	---	---	---	
Limited English Proficient	Current LEP	4	---	---	---	---	---	---	---	---	---	---	---	---	---	---	---	---	---	---	---	---	---	
	Non-LEP (Monitored 1st Year)	0	---	---	---	---	---	---	---	---	---	---	---	---	---	---	---	---	---	---	---	---	---	
	Non-LEP (Monitored 2nd Year)	0	---	---	---	---	---	---	---	---	---	---	---	---	---	---	---	---	---	---	---	---	---	
	Other Non-LEP	15	3509	12	80	3	20	2	13	0	0	2.4	30	5.1	39	5.7	44	3.9	24	3.6	40	4.5	50	
	No Information Provided	0	---	---	---	---	---	---	---	---	---	---	---	---	---	---	---	---	---	---	---	---	---	
Bilingual	Participants	0	---	---	---	---	---	---	---	---	---	---	---	---	---	---	---	---	---	---	---	---	---	
	Nonparticipants	19	3551	14	74	5	26	2	11	0	0	2.3	28	5.0	38	5.9	46	4.6	29	3.7	42	4.7	53	
	No Information Provided	0	---	---	---	---	---	---	---	---	---	---	---	---	---	---	---	---	---	---	---	---	---	
ESL	Participants	4	---	---	---	---	---	---	---	---	---	---	---	---	---	---	---	---	---	---	---	---	---	
	Nonparticipants	15	3509	12	80	3	20	2	13	0	0	2.4	30	5.1	39	5.7	44	3.9	24	3.6	40	4.5	50	
	No Information Provided	0	---	---	---	---	---	---	---	---	---	---	---	---	---	---	---	---	---	---	---	---	---	
Special Education	Yes	4	---	---	---	---	---	---	---	---	---	---	---	---	---	---	---	---	---	---	---	---	---	
	No	15	3526	12	80	3	20	2	13	0	0	2.3	29	5.2	40	5.6	43	4.3	27	3.8	42	4.5	50	
	No Information Provided	0	---	---	---	---	---	---	---	---	---	---	---	---	---	---	---	---	---	---	---	---	---	
Gifted/Talented	Participants	0	---	---	---	---	---	---	---	---	---	---	---	---	---	---	---	---	---	---	---	---	---	
	Nonparticipants	19	3551	14	74	5	26	2	11	0	0	2.3	28	5.0	38	5.9	46	4.6	29	3.7	42	4.7	53	
	No Information Provided	0	---	---	---	---	---	---	---	---	---	---	---	---	---	---	---	---	---	---	---	---	---	
At-Risk	Yes	15	3509	12	80	3	20	1	7	0	0	2.1	26	4.9	37	5.5	43	4.5	28	3.8	42	4.4	49	
	No	4	---	---	---	---	---	---	---	---	---	---	---	---	---	---	---	---	---	---	---	---	---	
	No Information Provided	0	---	---	---	---	---	---	---	---	---	---	---	---	---	---	---	---	---	---	---	---	---	
Career/Technical Education	Participants	13	3560	9	69	4	31	1	8	0	0	1.8	23	4.8	37	6.3	49	5.2	33	3.8	42	4.6	51	
	Nonparticipants	6	3530	5	83	1	17	1	17	0	0	3.2	40	5.3	41	5.2	40	3.3	21	3.7	41	5.0	56	
	No Information Provided	0	---	---	---	---	---	---	---	---	---	---	---	---	---	---	---	---	---	---	---	---	---	



STATEWIDE

STATE OF TEXAS ASSESSMENTS OF ACADEMIC READINESS
Constructed Responses Summary Report
ENGLISH III
Retested Students

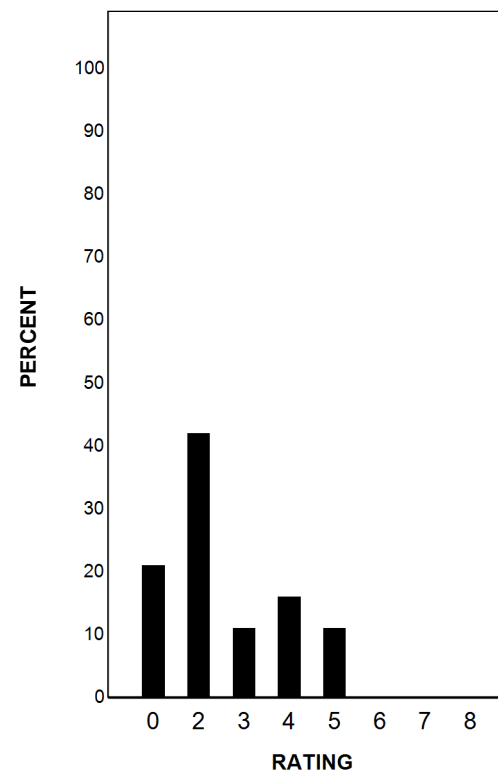
Report Date: SUMMER 2017
Date of Testing: SPRING 2017

--- = No Data Reported For Fewer Than Five Students

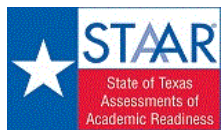
Written Composition Rating Summary

Analytical Composition

Rating	#	%
0	4	21
2	8	42
3	2	11
4	3	16
5	2	11
6	0	0
7	0	0
8	0	0
Total	19	100



Each composition has been scored independently by two readers. The written composition rating of 0-8 represents the summation of these scores.



STATEWIDE

STATE OF TEXAS ASSESSMENTS OF ACADEMIC READINESS

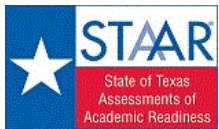
Summary Report

ENGLISH III

All Students

Report Date: SUMMER 2018
Date of Testing: SPRING 2018

Administration Summary			Number of Students Tested	Average Scale Score	Did Not Meet		Approaches		Meets		Masters		Results for Each Reporting Category											
													1		2		3		4		5		6	
													Understanding/ Analysis Across Genres	Understanding/ Analysis of Literary Texts	Understanding/ Analysis of Informational Texts	Composition	Revision	Editing						
Number of Points Possible																								
8		13											13		16		9		9					
Number of Points Scored																								
#	%	#	%	#	%	#	%	#	%	#	%													
All Students	9179	4012	2540	28	6639	72	5069	55	1185	13	4.4	55	7.5	58	7.7	59	7.3	46	5.6	62	6.0	67		
Male	4587	3936	1550	34	3037	66	2255	49	478	10	4.2	52	7.1	55	7.4	57	6.8	42	5.4	60	5.6	63		
Female	4591	4088	990	22	3601	78	2814	61	707	15	4.6	57	7.9	61	8.0	61	7.8	49	5.7	64	6.4	71		
No Information Provided	1	---	---	---	---	---	---	---	---	---	---	---	---	---	---	---	---	---	---	---	---	---		
Hispanic/Latino	7015	4011	1915	27	5100	73	3878	55	863	12	4.4	55	7.5	58	7.7	59	7.4	46	5.5	62	6.0	67		
American Indian or Alaska Native	27	3990	6	22	21	78	13	48	2	7	4.4	55	7.6	58	7.9	60	7.1	44	5.4	60	5.9	65		
Asian	75	4262	12	16	63	84	51	68	26	35	4.9	61	8.3	64	8.5	65	9.0	56	6.3	70	7.1	79		
Black or African American	806	3928	275	34	531	66	383	48	78	10	4.2	53	7.1	55	7.4	57	6.6	41	5.4	60	5.7	63		
Native Hawaiian or Other Pacific Islander	4	---	---	---	---	---	---	---	---	---	---	---	---	---	---	---	---	---	---	---	---	---		
White	1178	4053	313	27	865	73	695	59	201	17	4.6	58	7.8	60	7.7	59	7.4	46	5.8	65	6.2	69		
Two or More Races	72	4085	18	25	54	75	45	63	13	18	4.6	57	8.3	63	8.1	63	7.3	45	5.9	66	5.9	66		
No Information Provided	2	---	---	---	---	---	---	---	---	---	---	---	---	---	---	---	---	---	---	---	---	---		
Economically Disadvantaged	Yes No No Information Provided	6936 2239 4	3982 4104 ---	2041 499 ---	29 22 ---	4895 1740 ---	71 78 ---	3651 1416 ---	53 63 ---	787 397 ---	11 18 ---	4.3 4.8 ---	53 59 ---	7.3 8.0 ---	56 62 ---	7.6 8.1 ---	58 62 ---	7.2 7.6 ---	45 47 ---	5.5 5.9 ---	61 66 ---	5.9 6.4 ---		
Title I, Part A	Participants Nonparticipants No Information Provided	8206 971 2	4012 4008 ---	2259 281 ---	28 29 ---	5947 690 ---	72 71 ---	4541 527 ---	55 54 ---	1053 132 ---	13 14 ---	4.4 4.4 ---	55 56 ---	7.5 7.6 ---	58 58 ---	7.7 7.5 ---	59 58 ---	7.3 7.1 ---	46 44 ---	5.6 5.6 ---	62 63 ---	6.0 6.1 ---		
Migrant	Yes No No Information Provided	148 9023 8	3757 4016 3896	72 2466 2	49 27 25	76 6557 6	51 73 75	45 5022 2	30 56 25	8 1176 1	5 13 13	3.5 4.4 5.1	44 55 64	6.4 7.5 6.8	49 58 52	6.5 7.7 7.1	50 59 55	6.5 7.3 6.0	40 46 38	4.3 5.6 5.3	48 62 58	5.0 6.0 5.0		
Limited English Proficient	Current LEP Non-LEP (Monitored 1st Year) Non-LEP (Monitored 2nd Year) Other Non-LEP No Information Provided	1151 156 154 7714 4	3669 4030 4003 4063 ---	668 32 30 1809 ---	58 21 19 23 ---	483 124 124 5905 ---	42 79 81 77 ---	269 92 80 4627 ---	23 59 52 60 ---	19 9 15 1142 ---	2 6 10 15 ---	3.3 4.2 4.2 4.6 ---	42 52 52 57 ---	5.9 7.6 7.7 7.7 ---	45 58 59 60 ---	6.1 8.1 7.9 7.9 ---	47 62 60 61 ---	5.4 7.8 7.6 7.6 ---	34 48 47 47 ---	4.1 5.5 5.5 5.8 ---	46 61 61 64 ---	4.8 6.2 5.9 6.2 ---	53 68 65 69 ---	
Bilingual	Participants Nonparticipants No Information Provided	1 9175 3	---	---	---	---	---	---	---	---	---	---	---	---	---	---	---	---	---	---	---	---		
ESL	Participants Nonparticipants No Information Provided	1130 8046 3	3678 4059 ---	652 1888 ---	58 23 ---	478 6158 ---	42 77 ---	274 4794 ---	24 60 ---	20 1165 ---	2 14 ---	3.3 4.5 ---	42 57 ---	5.9 7.7 ---	45 59 ---	6.1 7.9 ---	47 61 ---	5.4 7.6 ---	34 47 ---	4.1 5.8 ---	46 64 ---	4.8 6.2 ---		
Special Education	Yes No No Information Provided	519 8656 4	3490 4043 ---	394 2146 ---	76 25 ---	125 6510 ---	24 75 ---	49 5018 ---	9 58 ---	5 1180 ---	1 14 ---	2.8 4.5 ---	35 56 ---	4.9 7.7 ---	37 59 ---	5.1 7.8 ---	40 60 ---	4.3 7.5 ---	27 47 ---	3.5 5.7 ---	38 63 ---	3.9 6.1 ---		
Gifted/Talented	Participants Nonparticipants No Information Provided	517 8658 4	4386 3989 ---	34 2506 ---	7 29 ---	483 6152 ---	93 71 ---	450 4617 ---	87 53 ---	191 994 ---	37 11 ---	5.5 4.3 ---	69 54 ---	9.2 7.4 ---	71 57 ---	9.4 7.6 ---	72 58 ---	9.1 7.2 ---	57 45 ---	7.0 5.5 ---	78 61 ---	7.5 5.9 ---		
At-Risk	Yes No No Information Provided	4683 4492 4	3789 4243 ---	2074 466 ---	44 10 ---	2609 4026 ---	56 90 ---	1585 3482 ---	34 78 ---	146 1039 ---	3 23 ---	3.7 5.1 ---	46 64 ---	6.4 8.6 ---	49 66 ---	6.7 8.7 ---	51 67 ---	6.2 8.5 ---	38 53 ---	4.7 6.5 ---	52 72 ---	5.2 6.8 ---		
Career/Technical Education	Participants Nonparticipants No Information Provided	6327 2849 3	3973 4096 ---	1942 598 ---	31 21 ---	4385 2251 ---	69 79 ---	3261 1805 ---	52 63 ---	679 505 ---	11 18 ---	4.3 4.6 ---	54 57 ---	7.3 7.9 ---	57 60 ---	7.5 8.1 ---	58 62 ---	6.9 8.2 ---	43 51 ---	5.5 5.8 ---	61 65 ---	5.9 6.2 ---		



STATE OF TEXAS ASSESSMENTS OF ACADEMIC READINESS
Constructed Responses Summary Report
ENGLISH III
All Students

Report Date: SUMMER 2018
Date of Testing: SPRING 2018

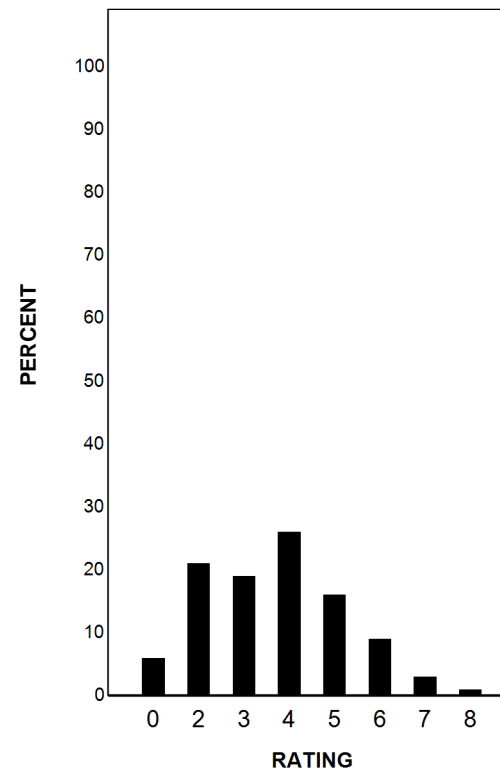
STATEWIDE

--- = No Data Reported For Fewer Than Five Students

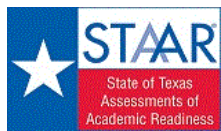
Written Composition Rating Summary

Analytical Composition

Rating	#	%
0	507	6
2	1898	21
3	1719	19
4	2386	26
5	1437	16
6	842	9
7	268	3
8	122	1
Total	9179	100



Each composition has been scored independently by two readers. The written composition rating of 0-8 represents the summation of these scores.



STATEWIDE

STATE OF TEXAS ASSESSMENTS OF ACADEMIC READINESS

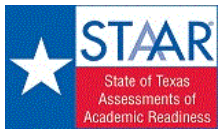
Summary Report

ENGLISH III

First-Time Tested Students

Report Date: SUMMER 2018
Date of Testing: SPRING 2018

Administration Summary			Number of Students Tested	Average Scale Score	Did Not Meet	Approaches	Meets	Masters	Results for Each Reporting Category														
									1		2		3		4		5		6				
Number	Percent	Understanding/ Analysis Across Genres							Understanding/ Analysis of Literary Texts		Understanding/ Analysis of Informational Texts		Composition		Revision		Editing						
Students Tested	9154	94																					
Students Not Tested																							
Absent	556	6																					
Other	8	0																					
Total Documents Submitted	9718	100																					
Legend																							
--- = No Data Reported For Fewer Than Five Students																							
			#	%	#	%	#	%	#	%	#	%	#	%	#	%	#	%	#	%	#	%	
All Students	9154	4013	2525	28	6629	72	5063	55	1185	13	4.4	55	7.5	58	7.7	59	7.3	46	5.6	62	6.0	67	
Male	4567	3937	1539	34	3028	66	2250	49	478	10	4.2	53	7.1	55	7.4	57	6.8	43	5.4	60	5.7	63	
Female	4586	4088	986	22	3600	78	2813	61	707	15	4.6	57	7.9	61	8.0	61	7.8	49	5.7	64	6.4	71	
No Information Provided	1	---	---	---	---	---	---	---	---	---	---	---	---	---	---	---	---	---	---	---	---	---	
Hispanic/Latino	6993	4012	1902	27	5091	73	3872	55	863	12	4.4	55	7.5	58	7.7	59	7.4	46	5.5	62	6.0	67	
American Indian or Alaska Native	27	3990	6	22	21	78	13	48	2	7	4.4	55	7.6	58	7.9	60	7.1	44	5.4	60	5.9	65	
Asian	75	4262	12	16	63	84	51	68	26	35	4.9	61	8.3	64	8.5	65	9.0	56	6.3	70	7.1	79	
Black or African American	804	3928	274	34	530	66	383	48	78	10	4.2	53	7.1	55	7.4	57	6.6	41	5.4	60	5.7	63	
Native Hawaiian or Other Pacific Islander	4	---	---	---	---	---	---	---	---	---	---	---	---	---	---	---	---	---	---	---	---	---	
White	1178	4053	313	27	865	73	695	59	201	17	4.6	58	7.8	60	7.7	59	7.4	46	5.8	65	6.2	69	
Two or More Races	71	4096	17	24	54	76	45	63	13	18	4.6	57	8.3	64	8.2	63	7.3	46	6.0	66	5.9	66	
No Information Provided	2	---	---	---	---	---	---	---	---	---	---	---	---	---	---	---	---	---	---	---	---	---	
Economically Disadvantaged	Yes	6914	3983	2029	29	4885	71	3645	53	787	11	4.3	53	7.3	57	7.6	58	7.2	45	5.5	61	5.9	66
	No	2236	4105	496	22	1740	78	1416	63	397	18	4.8	60	8.0	62	8.1	62	7.6	47	5.9	66	6.4	71
	No Information Provided	4	---	---	---	---	---	---	---	---	---	---	---	---	---	---	---	---	---	---	---	---	---
Title I, Part A	Participants	8181	4013	2244	27	5937	73	4535	55	1053	13	4.4	55	7.5	58	7.7	59	7.4	46	5.6	62	6.0	67
	Nonparticipants	971	4008	281	29	690	71	527	54	132	14	4.4	56	7.6	58	7.5	58	7.1	44	5.6	63	6.1	68
	No Information Provided	2	---	---	---	---	---	---	---	---	---	---	---	---	---	---	---	---	---	---	---	---	---
Migrant	Yes	148	3757	72	49	76	51	45	30	8	5	3.5	44	6.4	49	6.5	50	6.5	40	4.3	48	5.0	55
	No	8999	4017	2452	27	6547	73	5016	56	1176	13	4.4	55	7.5	58	7.7	59	7.3	46	5.6	62	6.0	67
	No Information Provided	7	3995	1	14	6	86	2	29	1	14	5.3	66	7.1	55	7.6	58	6.9	43	5.6	62	5.6	62
Limited English Proficient	Current LEP	1142	3670	663	58	479	42	267	23	19	2	3.3	42	5.9	45	6.1	47	5.4	34	4.1	46	4.8	53
	Non-LEP (Monitored 1st Year)	156	4030	32	21	124	79	92	59	9	6	4.2	52	7.6	58	8.1	62	7.8	48	5.5	61	6.2	68
	Non-LEP (Monitored 2nd Year)	154	4003	30	19	124	81	80	52	15	10	4.2	52	7.7	59	7.9	60	7.6	47	5.5	61	5.9	65
	Other Non-LEP	7698	4063	1799	23	5899	77	4623	60	1142	15	4.6	57	7.8	60	7.9	61	7.6	48	5.8	64	6.2	69
	No Information Provided	4	---	---	---	---	---	---	---	---	---	---	---	---	---	---	---	---	---	---	---	---	---
Bilingual	Participants	1	---	---	---	---	---	---	---	---	---	---	---	---	---	---	---	---	---	---	---	---	---
	Nonparticipants	9150	4013	2525	28	6625	72	5062	55	1185	13	4.4	55	7.5	58	7.7	59	7.3	46	5.6	62	6.0	67
	No Information Provided	3	---	---	---	---	---	---	---	---	---	---	---	---	---	---	---	---	---	---	---	---	---
ESL	Participants	1121	3678	647	58	474	42	272	24	20	2	3.3	42	5.9	45	6.1	47	5.4	34	4.1	46	4.8	53
	Nonparticipants	8030	4059	1878	23	6152	77	4790	60	1165	15	4.5	57	7.7	60	7.9	61	7.6	47	5.8	64	6.2	69
	No Information Provided	3	---	---	---	---	---	---	---	---	---	---	---	---	---	---	---	---	---	---	---	---	---
Special Education	Yes	517	3492	392	76	125	24	49	9	5	1	2.8	36	4.9	38	5.1	40	4.3	27	3.5	39	3.9	43
	No	8633	4044	2133	25	6500	75	5012	58	1180	14	4.5	56	7.7	59	7.8	60	7.5	47	5.7	63	6.2	68
	No Information Provided	4	---	---	---	---	---	---	---	---	---	---	---	---	---	---	---	---	---	---	---	---	---
Gifted/Talented	Participants	516	4387	34	7	482	93	450	87	191	37	5.5	69	9.2	71	9.4	72	9.1	57	7.0	78	7.5	83
	Nonparticipants	8634	3990	2491	29	6143	71	4611	53	994	12	4.3	54	7.4	57	7.6	58	7.2	45	5.5	61	5.9	66
	No Information Provided	4	---	---	---	---	---	---	---	---	---	---	---	---	---	---	---	---	---	---	---	---	---
At-Risk	Yes	4665	3790	2063	44	2602	56	1582	34	146	3	3.7	46	6.4	49	6.7	51	6.2	39	4.7	52	5.2	58
	No	4485	4244	462	10	4023	90	3479	78	1039	23	5.1	64	8.6	66	8.8	67	8.5	53	6.5	72	6.9	76
	No Information Provided	4	---	---	---	---	---	---	---	---	---	---	---	---	---	---	---	---	---	---	---	---	---
Career/Technical Education	Participants	6316	3974	1935	31	4381	69	3259	52	679	11	4.3	54	7.4	57	7.5	58	6.9	43	5.5	61	5.9	66
	Nonparticipants	2835	4098	590	21	2245	79	1801	64	505	18	4.6	57	7.9	60	8.1	62	8.2	51	5.8	65	6.2	69
	No Information Provided	3	---	---	---	---	---	---	---	---	---	---	---	---	---	---	---	---	---	---	---	---	---



STATE OF TEXAS ASSESSMENTS OF ACADEMIC READINESS
Constructed Responses Summary Report
ENGLISH III
First-Time Tested Students

Report Date: SUMMER 2018
Date of Testing: SPRING 2018

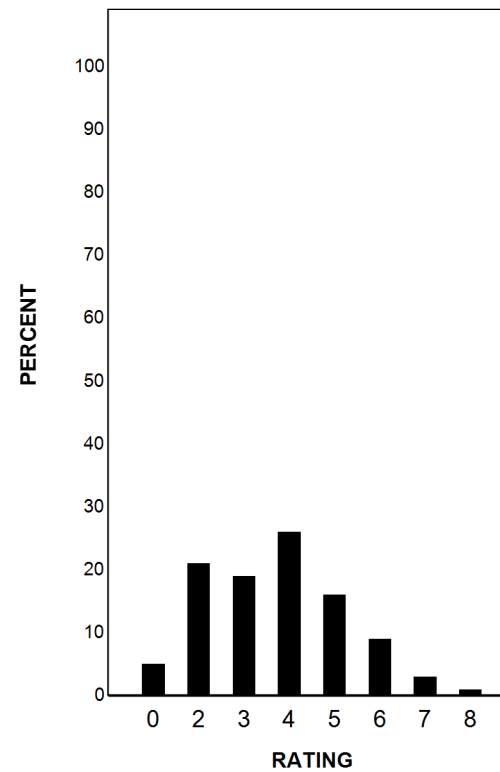
STATEWIDE

--- = No Data Reported For Fewer Than Five Students

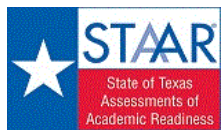
Written Composition Rating Summary

Analytical Composition

Rating	#	%
0	503	5
2	1887	21
3	1716	19
4	2380	26
5	1436	16
6	842	9
7	268	3
8	122	1
Total	9154	100



Each composition has been scored independently by two readers. The written composition rating of 0-8 represents the summation of these scores.



STATEWIDE

STATE OF TEXAS ASSESSMENTS OF ACADEMIC READINESS

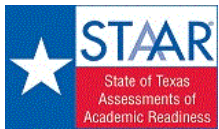
Summary Report

ENGLISH III

Retested Students

Report Date: SUMMER 2018
Date of Testing: SPRING 2018

Administration Summary			Number of Students Tested	Average Scale Score	Did Not Meet		Approaches		Meets		Masters		Results for Each Reporting Category																											
													1		2		3		4		5		6																	
Number	Percent	Understanding/ Analysis Across Genres											Understanding/ Analysis of Literary Texts	Understanding/ Analysis of Informational Texts	Composition	Revision	Editing																							
Students Tested	25																	61																						
Students Not Tested																																								
Absent	16																	39																						
Other	0	0																																						
Total Documents Submitted	41	100																																						
Legend													--- = No Data Reported For Fewer Than Five Students	#	%	#	%	#	%	#	%	#	%	#	%	#	%	#	%	#	%									
Number of Points Possible																																								
8												13																				13		16		9		9		
Number of Points Scored																																								
All Students			25	3640	15	60	10	40	6	24	0	0	3.3	41	5.6	43	6.0	46	4.8	30	4.6	51	4.4	49																
Male			20	3662	11	55	9	45	5	25	0	0	3.5	44	5.9	45	6.2	48	4.6	29	4.8	53	4.4	48																
Female			5	3551	4	80	1	20	1	20	0	0	2.4	30	4.8	37	5.0	38	5.6	35	3.6	40	4.8	53																
No Information Provided			0	---	---	---	---	---	---	---	---	---	---	---	---	---	---	---	---	---	---	---	---	---																
Hispanic/Latino			22	3637	13	59	9	41	6	27	0	0	3.2	40	5.6	43	6.1	47	4.8	30	4.5	50	4.3	47																
American Indian or Alaska Native			0	---	---	---	---	---	---	---	---	---	---	---	---	---	---	---	---	---	---	---	---	---																
Asian			0	---	---	---	---	---	---	---	---	---	---	---	---	---	---	---	---	---	---	---	---	---																
Black or African American			2	---	---	---	---	---	---	---	---	---	---	---	---	---	---	---	---	---	---	---	---	---																
Native Hawaiian or Other Pacific Islander			0	---	---	---	---	---	---	---	---	---	---	---	---	---	---	---	---	---	---	---	---	---																
White			0	---	---	---	---	---	---	---	---	---	---	---	---	---	---	---	---	---	---	---	---	---																
Two or More Races			1	---	---	---	---	---	---	---	---	---	---	---	---	---	---	---	---	---	---	---	---	---																
No Information Provided			0	---	---	---	---	---	---	---	---	---	---	---	---	---	---	---	---	---	---	---	---	---																
Economically Disadvantaged	Yes		22	3663	12	55	10	45	6	27	0	0	3.4	42	5.8	45	6.4	49	4.7	30	4.7	52	4.4	48																
	No		3	---	---	---	---	---	---	---	---	---	---	---	---	---	---	---	---	---	---	---	---	---																
	No Information Provided		0	---	---	---	---	---	---	---	---	---	---	---	---	---	---	---	---	---	---	---	---	---																
Title I, Part A	Participants		25	3640	15	60	10	40	6	24	0	0	3.3	41	5.6	43	6.0	46	4.8	30	4.6	51	4.4	49																
	Nonparticipants		0	---	---	---	---	---	---	---	---	---	---	---	---	---	---	---	---	---	---	---	---	---																
	No Information Provided		0	---	---	---	---	---	---	---	---	---	---	---	---	---	---	---	---	---	---	---	---	---																
Migrant	Yes		0	---	---	---	---	---	---	---	---	---	---	---	---	---	---	---	---	---	---	---	---	---																
	No		24	3658	14	58	10	42	6	25	0	0	3.3	41	5.7	44	6.0	46	5.0	31	4.6	51	4.6	51																
	No Information Provided		1	---	---	---	---	---	---	---	---	---	---	---	---	---	---	---	---	---	---	---	---	---																
Limited English Proficient	Current LEP		9	3585	5	56	4	44	2	22	0	0	3.0	38	6.0	46	6.4	50	4.7	29	3.7	41	3.7	41																
	Non-LEP (Monitored 1st Year)		0	---	---	---	---	---	---	---	---	---	---	---	---	---	---	---	---	---	---	---	---	---																
	Non-LEP (Monitored 2nd Year)		0	---	---	---	---	---	---	---	---	---	---	---	---	---	---	---	---	---	---	---	---	---																
	Other Non-LEP		16	3671	10	63	6	38	4	25	0	0	3.4	43	5.4	42	5.7	44	4.9	30	5.1	56	4.9	54																
	No Information Provided		0	---	---	---	---	---	---	---	---	---	---	---	---	---	---	---	---	---	---	---	---	---																
Bilingual	Participants		0	---	---	---	---	---	---	---	---	---	---	---	---	---	---	---	---	---	---	---	---	---																
	Nonparticipants		25	3640	15	60	10	40	6	24	0	0	3.3	41	5.6	43	6.0	46	4.8	30	4.6	51	4.4	49																
	No Information Provided		0	---	---	---	---	---	---	---	---	---	---	---	---	---	---	---	---	---	---	---	---	---																
ESL	Participants		9	3585	5	56	4	44	2	22	0	0	3.0	38	6.0	46	6.4	50	4.7	29	3.7	41	3.7	41																
	Nonparticipants		16	3671	10	63	6	38	4	25	0	0	3.4	43	5.4	42	5.7	44	4.9	30	5.1	56	4.9	54																
	No Information Provided		0	---	---	---	---	---	---	---	---	---	---	---	---	---	---	---	---	---	---	---	---	---																
Special Education	Yes		2	---	---	---	---	---	---	---	---	---	---	---	---	---	---	---	---	---	---	---	---	---																
	No		23	3686	13	57	10	43	6	26	0	0	3.5	43	6.0	46	6.0	46	5.0	32	4.8	54	4.6	51																
	No Information Provided		0	---	---	---	---	---	---	---	---	---	---	---	---	---	---	---	---	---	---	---	---	---																
Gifted/Talented	Participants		1	---	---	---	---	---	---	---	---	---	---	---	---	---	---	---	---	---	---	---	---	---																
	Nonparticipants		24	3630	15	63	9	38	6	25	0	0	3.2	40	5.6	43	5.9	45	4.7	29	4.6	51	4.5	50																
	No Information Provided		0	---	---	---	---	---	---	---	---	---	---	---	---	---	---	---	---	---	---	---	---	---																
At-Risk	Yes		18	3600	11	61	7	39	3	17	0	0	3.1	39	5.6	43	6.2	48	4.3	27	4.3	48	4.1	45																
	No		7	3744	4	57	3	43	3	43	0	0	3.7	46	5.9	45	5.3	41	6.0	38	5.3	59	5.4	60																
	No Information Provided		0	---	---	---	---	---	---	---	---	---	---	---	---	---	---	---	---	---	---	---	---	---																
Career/Technical Education	Participants		11	3558	7	64	4	36	2	18	0	0	3.3	41	4.7	36	5.5	42	4.0	25	4.5	49	4.4	48																
	Nonparticipants		14	3704	8	57	6	43	4	29	0	0	3.3	41	6.4	49	6.4	49	5.4	34	4.6	52	4.5	50																
	No Information Provided		0	---	---	---	---	---	---	---	---	---	---	---	---	---	---	---	---	---	---	---	---	---																



STATEWIDE

STATE OF TEXAS ASSESSMENTS OF ACADEMIC READINESS
Constructed Responses Summary Report
ENGLISH III
Retested Students

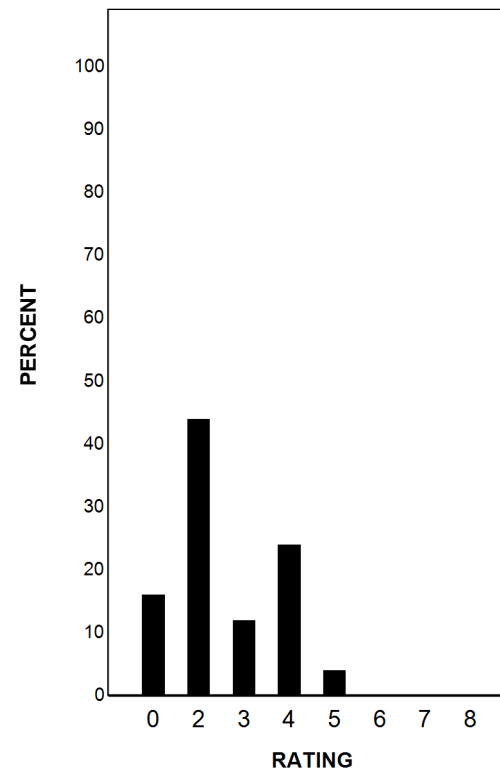
Report Date: SUMMER 2018
Date of Testing: SPRING 2018

--- = No Data Reported For Fewer Than Five Students

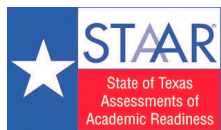
Written Composition Rating Summary

Analytical Composition

Rating	#	%
0	4	16
2	11	44
3	3	12
4	6	24
5	1	4
6	0	0
7	0	0
8	0	0
Total	25	100



Each composition has been scored independently by two readers. The written composition rating of 0-8 represents the summation of these scores.



STATE OF TEXAS ASSESSMENTS OF ACADEMIC READINESS

Summary Report

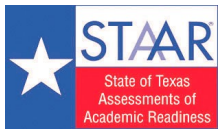
ENGLISH III

All Students

STATEWIDE PRELIMINARY

Report Date: SUMMER 2019
Date of Testing: SPRING 2019

Administration Summary			Number of Students Tested	Average Scale Score	Did Not Meet	Approaches	Meets	Masters	Results for Each Reporting Category																	
									1		2		3		4		5		6							
Number	Percent	Understanding/ Analysis Across Genres							Understanding/ Analysis of Literary Texts	Understanding/ Analysis of Informational Texts	Composition	Revision	Editing													
Students Tested	4624													98												
Students Not Tested																										
Absent	72													2												
Other	2	0																								
Total Documents Submitted	4698	100																								
Legend									Number of Points Possible																	
--- = No Data Reported For Fewer Than Five Students									8		13				16				9		9					
			Number of Points Scored																							
			#	%	#	%	#	%	#	%	#	%	#	%	#	%	#	%	#	%						
All Students			4624	4044	1145	25	3479	75	2592	56	680	15	4.6	57	7.7	59	7.9	60	7.9	49	5.7	63	6.1	68		
Male			2334	3979	696	30	1638	70	1174	50	278	12	4.4	55	7.3	56	7.6	59	7.4	46	5.6	62	5.8	64		
Female			2287	4111	449	20	1838	80	1416	62	402	18	4.7	59	8.0	62	8.1	62	8.4	53	5.8	64	6.4	72		
No Information Provided			3	---	---	---	---	---	---	---	---	---	---	---	---	---	---	---	---	---	---	---	---	---		
Hispanic/Latino			3360	4044	826	25	2534	75	1865	56	490	15	4.5	57	7.7	59	7.9	60	8.0	50	5.7	64	6.1	67		
American Indian or Alaska Native			7	4256	1	14	6	86	6	86	3	43	5.1	64	9.6	74	9.3	71	7.7	48	6.4	71	6.7	75		
Asian			46	4267	8	17	38	83	33	72	14	30	5.2	65	8.7	67	8.8	68	8.5	53	6.5	72	7.1	79		
Black or African American			737	3958	217	29	520	71	367	50	66	9	4.4	55	7.2	56	7.6	58	7.3	45	5.3	59	5.9	66		
Native Hawaiian or Other Pacific Islander			5	4072	1	20	4	80	4	80	0	0	4.6	58	7.8	60	7.8	60	8.0	50	5.6	62	7.0	78		
White			428	4160	81	19	347	81	291	68	102	24	5.1	63	8.2	63	8.3	64	8.4	52	6.1	68	6.5	73		
Two or More Races			34	4044	11	32	23	68	21	62	4	12	5.0	63	7.9	61	7.4	57	7.7	48	5.8	64	5.9	66		
No Information Provided			7	4288	0	0	7	100	5	71	1	14	5.9	73	9.4	73	8.6	66	7.1	45	6.1	68	7.9	87		
Economically Disadvantaged	Yes	3353	3996	922	27	2431	73	1735	52	398	12	4.4	55	7.4	57	7.7	59	7.7	48	5.5	61	5.9	66			
	No	1263	4171	222	18	1041	82	851	67	281	22	5.0	63	8.3	64	8.4	64	8.5	53	6.1	68	6.5	73			
	No Information Provided	8	4268	1	13	7	88	6	75	1	13	5.8	72	9.6	74	9.1	70	6.8	42	5.8	64	7.6	85			
Title I, Part A	Participants	4148	4030	1051	25	3097	75	2279	55	567	14	4.5	57	7.6	59	7.8	60	7.8	49	5.7	63	6.1	67			
	Nonparticipants	468	4164	93	20	375	80	307	66	112	24	5.1	64	8.2	63	8.3	64	8.5	53	6.0	67	6.4	71			
	No Information Provided	8	4268	1	13	7	88	6	75	1	13	5.8	72	9.6	74	9.1	70	6.8	42	5.8	64	7.6	85			
Migrant	Yes	25	3756	13	52	12	48	6	24	1	4	3.6	46	6.6	50	6.9	53	5.8	36	4.5	50	5.0	56			
	No	4590	4045	1131	25	3459	75	2579	56	678	15	4.6	57	7.7	59	7.9	60	7.9	49	5.7	63	6.1	68			
	No Information Provided	9	4281	1	11	8	89	7	78	1	11	5.7	71	9.6	74	9.2	71	7.1	44	5.9	65	7.7	85			
Limited English Proficient	Current LEP	603	3696	322	53	281	47	135	22	2	0	3.4	42	5.9	46	6.3	48	5.9	37	4.5	50	4.9	55			
	Non-LEP (Monitored 1st Year)	56	3976	13	23	43	77	26	46	2	4	4.3	54	7.3	56	7.7	59	7.9	49	5.4	60	5.9	65			
	Non-LEP (Monitored 2nd Year)	75	4028	13	17	62	83	41	55	4	5	4.2	52	7.7	59	7.8	60	8.2	52	5.7	63	6.1	68			
	Non-LEP (Monitored 3rd Year)	143	3986	33	23	110	77	80	56	5	3	4.2	53	7.2	56	7.7	59	8.1	51	5.6	62	5.8	65			
	Non-LEP (Monitored 4th Year)	76	4108	12	16	64	84	49	64	11	14	4.8	61	8.4	64	8.3	64	7.8	49	6.0	67	6.4	71			
	Other Non-LEP	3663	4103	751	21	2912	79	2255	62	655	18	4.8	60	8.0	61	8.1	62	8.2	51	5.9	65	6.3	70			
	No Information Provided	8	4268	1	13	7	88	6	75	1	13	5.8	72	9.6	74	9.1	70	6.8	42	5.8	64	7.6	85			
Bilingual	Participants	0	---	---	---	---	---	---	---	---	---	---	---	---	---	---	---	---	---	---	---	---	---	---		
	Nonparticipants	4616	4044	1144	25	3472	75	2586	56	679	15	4.6	57	7.7	59	7.9	60	7.9	49	5.7	63	6.1	68			
	No Information Provided	8	4268	1	13	7	88	6	75	1	13	5.8	72	9.6	74	9.1	70	6.8	42	5.8	64	7.6	85			
ESL	Participants	607	3699	324	53	283	47	136	22	2	0	3.4	42	6.0	46	6.3	48	6.0	37	4.4	49	4.9	55			
	Nonparticipants	4009	4096	820	20	3189	80	2450	61	677	17	4.8	60	7.9	61	8.1	62	8.2	51	5.9	65	6.3	70			
	No Information Provided	8	4268	1	13	7	88	6	75	1	13	5.8	72	9.6	74	9.1	70	6.8	42	5.8	64	7.6	85			
Special Education	Yes	301	3496	229	76	72	24	35	12	1	0	3.0	37	4.7	36	5.0	39	4.6	29	3.8	42	4.1	46			
	No	4315	4082	915	21	3400	79	2551	59	678	16	4.7	59	7.9	61	8.1	62	8.1	51	5.8	65	6.2	69			
	No Information Provided	8	4268	1	13	7	88	6	75	1	13	5.8	72	9.6	74	9.1	70	6.8	42	5.8	64	7.6	85			
Gifted/Talented	Participants	216	4467	17	8	199	92	184	85	109	50	5.8	73	9.6	74	9.5	73	9.9	62	7.2	80	7.5	84			
	Nonparticipants	4400	4023	1127	26	3273	74	2402	55	570	13	4.5	56	7.6	58	7.8	60	7.8	49	5.6	62	6.0	67			
	No Information Provided	8	4268	1	13	7	88	6	75	1	13	5.8	72	9.6	74	9.1	70	6.8	42	5.8	64	7.6	85			
At-Risk	Yes	2071	3802	900	43	1171	57	674	33	84	4	3.8	48	6.5	50	6.7	52	6.6	41	4.8	53	5.3	59			
	No	2545	4240	244	10	2301	90	1912	75	595	23	5.2	65	8.7	67	8.8	68	9.0	56	6.4	71	6.8	75			
	No Information Provided	8	4268	1	13	7	88	6	75	1	13	5.8	72	9.6	74	9.1	70	6.8	42	5.8	64	7.6	85			
Career/Technical Education	Participants	2950	4051	728	25	2222	75	1664	56	450	15	4.7	59	7.7	59	7.9	60	7.8	49	5.7	63	6.2	69			
	Nonparticipants	1671	4031	417	25	1254	75	925	55	229	14	4.4	55	7.6	59	7.9	61	8.1	50	5.6	63	5.9	65			
	No Information Provided	3	---	---	---	---	---	---	---	---	---	---	---	---	---	---	---	---	---	---	---	---	---	---		



STATE OF TEXAS ASSESSMENTS OF ACADEMIC READINESS
Constructed Responses Summary Report
ENGLISH III
All Students

STATEWIDE PRELIMINARY

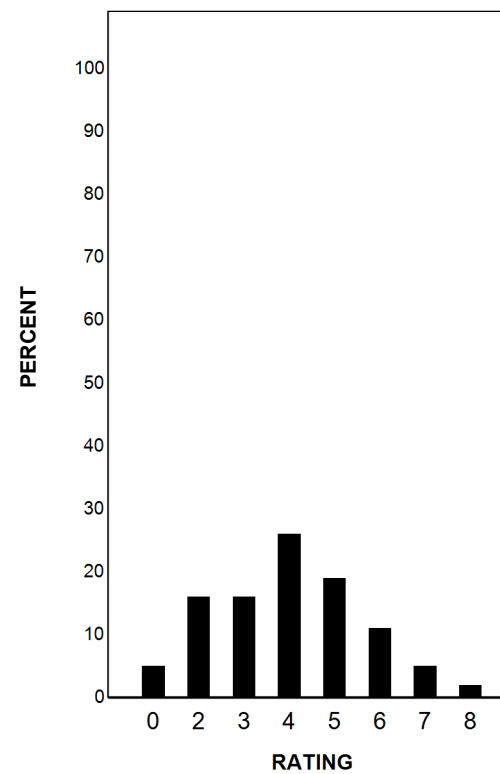
Report Date: SUMMER 2019
Date of Testing: SPRING 2019

--- = No Data Reported For Fewer Than Five Students

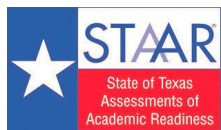
Written Composition Rating Summary

Analytical Composition

Rating	#	%
0	226	5
2	744	16
3	747	16
4	1218	26
5	868	19
6	513	11
7	237	5
8	71	2
Total	4624	100



Each composition has been scored independently by two readers. The written composition rating of 0-8 represents the summation of these scores.



STATE OF TEXAS ASSESSMENTS OF ACADEMIC READINESS

Summary Report

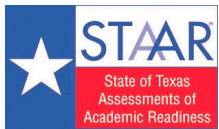
ENGLISH III

First-Time Tested Students

STATEWIDE PRELIMINARY

Report Date: SUMMER 2019
Date of Testing: SPRING 2019

Administration Summary			Number of Students Tested	Average Scale Score	Did Not Meet	Approaches	Meets	Masters	Results for Each Reporting Category																			
									1		2		3		4		5		6									
Number	Percent	Understanding/ Analysis Across Genres							Understanding/ Analysis of Literary Texts		Understanding/ Analysis of Informational Texts		Composition		Revision		Editing											
Students Tested	4609	98																										
Students Not Tested																												
Absent	72	2																										
Other	2	0																										
Total Documents Submitted	4683	100																										
Legend																												
--- = No Data Reported For Fewer Than Five Students																												
#	%	#	%	#	%	#	%	#	%	#	%	#	%	#	%	#	%	#	%	#	%							
All Students	4609	4046	1134	25	3475	75	2590	56	680	15	4.6	57	7.7	59	7.9	61	7.9	49	5.7	63	6.1	68						
Male	2322	3981	687	30	1635	70	1173	51	278	12	4.4	55	7.3	56	7.7	59	7.4	46	5.6	62	5.8	64						
Female	2284	4111	447	20	1837	80	1415	62	402	18	4.7	59	8.0	62	8.1	62	8.4	53	5.8	64	6.4	72						
No Information Provided	3	---	---	---	---	---	---	---	---	---	---	---	---	---	---	---	---	---	---	---	---	---						
Hispanic/Latino	3345	4047	815	24	2530	76	1863	56	490	15	4.6	57	7.7	59	7.9	61	8.0	50	5.7	64	6.1	67						
American Indian or Alaska Native	7	4256	1	14	6	86	6	86	3	43	5.1	64	9.6	74	9.3	71	7.7	48	6.4	71	6.7	75						
Asian	46	4267	8	17	38	83	33	72	14	30	5.2	65	8.7	67	8.8	68	8.5	53	6.5	72	7.1	79						
Black or African American	737	3958	217	29	520	71	367	50	66	9	4.4	55	7.2	56	7.6	58	7.3	45	5.3	59	5.9	66						
Native Hawaiian or Other Pacific Islander	5	4072	1	20	4	80	4	80	0	0	4.6	58	7.8	60	7.8	60	8.0	50	5.6	62	7.0	78						
White	428	4160	81	19	347	81	291	68	102	24	5.1	63	8.2	63	8.3	64	8.4	52	6.1	68	6.5	73						
Two or More Races	34	4044	11	32	23	68	21	62	4	12	5.0	63	7.9	61	7.4	57	7.7	48	5.8	64	5.9	66						
No Information Provided	7	4288	0	0	7	100	5	71	1	14	5.9	73	9.4	73	8.6	66	7.1	45	6.1	68	7.9	87						
Economically Disadvantaged	Yes	3341	3998	912	27	2429	73	1733	52	398	12	4.4	55	7.4	57	7.7	59	7.7	48	5.5	61	5.9	66					
	No	1260	4172	221	18	1039	82	851	68	281	22	5.0	63	8.3	64	8.4	65	8.5	53	6.1	68	6.5	73					
	No Information Provided	8	4268	1	13	7	88	6	75	1	13	5.8	72	9.6	74	9.1	70	6.8	42	5.8	64	7.6	85					
Title I, Part A	Participants	4133	4032	1040	25	3093	75	2277	55	567	14	4.5	57	7.6	59	7.8	60	7.8	49	5.7	63	6.1	68					
	Nonparticipants	468	4164	93	20	375	80	307	66	112	24	5.1	64	8.2	63	8.3	64	8.5	53	6.0	67	6.4	71					
	No Information Provided	8	4268	1	13	7	88	6	75	1	13	5.8	72	9.6	74	9.1	70	6.8	42	5.8	64	7.6	85					
Migrant	Yes	25	3756	13	52	12	48	6	24	1	4	3.6	46	6.6	50	6.9	53	5.8	36	4.5	50	5.0	56					
	No	4575	4047	1120	24	3455	76	2577	56	678	15	4.6	57	7.7	59	7.9	61	7.9	49	5.7	63	6.1	68					
	No Information Provided	9	4281	1	11	8	89	7	78	1	11	5.7	71	9.6	74	9.2	71	7.1	44	5.9	65	7.7	85					
Limited English Proficient	Current LEP	598	3699	318	53	280	47	135	23	2	0	3.4	42	5.9	46	6.3	48	5.9	37	4.5	50	4.9	55					
	Non-LEP (Monitored 1st Year)	56	3976	13	23	43	77	26	46	2	4	4.3	54	7.3	56	7.7	59	7.9	49	5.4	60	5.9	65					
	Non-LEP (Monitored 2nd Year)	75	4028	13	17	62	83	41	55	4	5	4.2	52	7.7	59	7.8	60	8.2	52	5.7	63	6.1	68					
	Non-LEP (Monitored 3rd Year)	143	3986	33	23	110	77	80	56	5	3	4.2	53	7.2	56	7.7	59	8.1	51	5.6	62	5.8	65					
	Non-LEP (Monitored 4th Year)	76	4108	12	16	64	84	49	64	11	14	4.8	61	8.4	64	8.3	64	7.8	49	6.0	67	6.4	71					
	Other Non-LEP	3653	4105	744	20	2909	80	2253	62	655	18	4.8	60	8.0	61	8.1	63	8.2	51	5.9	66	6.3	70					
	No Information Provided	8	4268	1	13	7	88	6	75	1	13	5.8	72	9.6	74	9.1	70	6.8	42	5.8	64	7.6	85					
Bilingual	Participants	0	---	---	---	---	---	---	---	---	---	---	---	---	---	---	---	---	---	---	---	---	---					
	Nonparticipants	4601	4045	1133	25	3468	75	2584	56	679	15	4.6	57	7.7	59	7.9	61	7.9	49	5.7	63	6.1	68					
	No Information Provided	8	4268	1	13	7	88	6	75	1	13	5.8	72	9.6	74	9.1	70	6.8	42	5.8	64	7.6	85					
ESL	Participants	602	3701	320	53	282	47	136	23	2	0	3.4	42	6.0	46	6.3	48	6.0	37	4.5	50	4.9	55					
	Nonparticipants	3999	4097	813	20	3186	80	2448	61	677	17	4.8	60	7.9	61	8.1	62	8.2	51	5.9	65	6.3	70					
	No Information Provided	8	4268	1	13	7	88	6	75	1	13	5.8	72	9.6	74	9.1	70	6.8	42	5.8	64	7.6	85					
Special Education	Yes	300	3497	228	76	72	24	35	12	1	0	3.0	37	4.7	36	5.0	39	4.6	29	3.8	42	4.1	46					
	No	4301	4084	905	21	3396	79	2549	59	678	16	4.7	59	7.9	61	8.1	62	8.1	51	5.8	65	6.2	69					
	No Information Provided	8	4268	1	13	7	88	6	75	1	13	5.8	72	9.6	74	9.1	70	6.8	42	5.8	64	7.6	85					
Gifted/Talented	Participants	216	4467	17	8	199	92	184	85	109	50	5.8	73	9.6	74	9.5	73	9.9	62	7.2	80	7.5	84					
	Nonparticipants	4385	4025	1116	25	3269	75	2400	55	570	13	4.5	57	7.6	58	7.8	60	7.8	49	5.6	62	6.0	67					
	No Information Provided	8	4268	1	13	7	88	6	75	1	13	5.8	72	9.6	74	9.1	70	6.8	42	5.8	64	7.6	85					
At-Risk	Yes	2061	3804	893	43	1168	57	673	33	84	4	3.8	48	6.5	50	6.7	52	6.6	41	4.8	53	5.3	59					
	No	2540	4242	240	9	2300	91	1911	75	595	23	5.2	65	8.7	67	8.8	68	9.0	56	6.4	71	6.8	75					
	No Information Provided	8	4268	1	13	7	88	6	75	1	13	5.8	72	9.6	74	9.1	70	6.8	42	5.8	64	7.6	85					
Career/Technical Education	Participants	2944	4052	724	25	2220	75	1663	56	450	15	4.7	59	7.7	59	7.9	60	7.8	49	5.7	64	6.2	69					
	Nonparticipants	1662	4034	410	25	1252	75	924	56	229	14	4.4	55	7.6	59	7.9	61	8.1	51	5.7	63	5.9	66					
	No Information Provided	3	---	---	---	---	---	---	---	---	---	---	---	---	---	---	---	---	---	---	---	---	---					



STATE OF TEXAS ASSESSMENTS OF ACADEMIC READINESS
Constructed Responses Summary Report
ENGLISH III
First-Time Tested Students

STATEWIDE PRELIMINARY

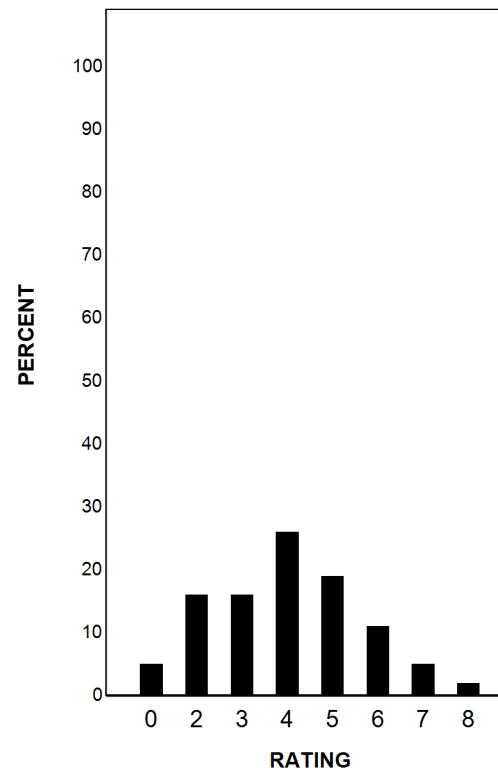
Report Date: SUMMER 2019
Date of Testing: SPRING 2019

--- = No Data Reported For Fewer Than Five Students

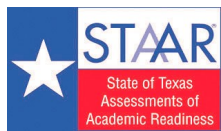
Written Composition Rating Summary

Analytical Composition

Rating	#	%
0	224	5
2	739	16
3	745	16
4	1214	26
5	867	19
6	512	11
7	237	5
8	71	2
Total	4609	100



Each composition has been scored independently by two readers. The written composition rating of 0-8 represents the summation of these scores.



STATE OF TEXAS ASSESSMENTS OF ACADEMIC READINESS

Summary Report

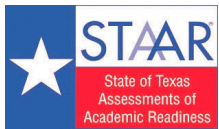
ENGLISH III

Retested Students

STATEWIDE PRELIMINARY

Report Date: SUMMER 2019
Date of Testing: SPRING 2019

Administration Summary			Number of Students Tested	Average Scale Score	Did Not Meet		Approaches		Meets		Masters		Results for Each Reporting Category										
													1		2		3		4		5		6
Number	Percent	Understanding/ Analysis Across Genres											Understanding/ Analysis of Literary Texts	Understanding/ Analysis of Informational Texts	Composition	Revision	Editing						
Students Tested	15																	100					
Students Not Tested																							
Absent	0																	0					
Other	0																	0					
Total Documents Submitted	15	100																					
Legend			Number of Points Possible																				
--- = No Data Reported For Fewer Than Five Students			8		13		13		16		9		9										
			Number of Points Scored																				
			#	%	#	%	#	%	#	%	#	%	#	%	#	%	#	%	#	%			
All Students	15	3524	11	73	4	27	2	13	0	0	2.8	35	5.2	40	4.7	36	5.7	36	3.5	39	4.3	47	
Male	12	3503	9	75	3	25	1	8	0	0	2.7	33	5.3	41	4.6	35	5.7	35	3.3	36	4.0	44	
Female	3	---	---	---	---	---	---	---	---	---	---	---	---	---	---	---	---	---	---	---	---	---	
No Information Provided	0	---	---	---	---	---	---	---	---	---	---	---	---	---	---	---	---	---	---	---	---	---	
Hispanic/Latino	15	3524	11	73	4	27	2	13	0	0	2.8	35	5.2	40	4.7	36	5.7	36	3.5	39	4.3	47	
American Indian or Alaska Native	0	---	---	---	---	---	---	---	---	---	---	---	---	---	---	---	---	---	---	---	---	---	
Asian	0	---	---	---	---	---	---	---	---	---	---	---	---	---	---	---	---	---	---	---	---	---	
Black or African American	0	---	---	---	---	---	---	---	---	---	---	---	---	---	---	---	---	---	---	---	---	---	
Native Hawaiian or Other Pacific Islander	0	---	---	---	---	---	---	---	---	---	---	---	---	---	---	---	---	---	---	---	---	---	
White	0	---	---	---	---	---	---	---	---	---	---	---	---	---	---	---	---	---	---	---	---	---	
Two or More Races	0	---	---	---	---	---	---	---	---	---	---	---	---	---	---	---	---	---	---	---	---	---	
No Information Provided	0	---	---	---	---	---	---	---	---	---	---	---	---	---	---	---	---	---	---	---	---	---	
Economically Disadvantaged	Yes 12 3 0	3500	10	83	2	17	2	17	0	0	2.7	33	4.8	37	4.8	37	5.5	34	3.3	36	4.3	47	
	No	---	---	---	---	---	---	---	---	---	---	---	---	---	---	---	---	---	---	---	---	---	
	No Information Provided	---	---	---	---	---	---	---	---	---	---	---	---	---	---	---	---	---	---	---	---	---	
Title I, Part A	Participants 15 0 0	3524	11	73	4	27	2	13	0	0	2.8	35	5.2	40	4.7	36	5.7	36	3.5	39	4.3	47	
	Nonparticipants	---	---	---	---	---	---	---	---	---	---	---	---	---	---	---	---	---	---	---	---	---	
	No Information Provided	---	---	---	---	---	---	---	---	---	---	---	---	---	---	---	---	---	---	---	---	---	
Migrant	Yes 0 15 0	3524	11	73	4	27	2	13	0	0	2.8	35	5.2	40	4.7	36	5.7	36	3.5	39	4.3	47	
	No	---	---	---	---	---	---	---	---	---	---	---	---	---	---	---	---	---	---	---	---	---	
	No Information Provided	---	---	---	---	---	---	---	---	---	---	---	---	---	---	---	---	---	---	---	---	---	
Limited English Proficient	Current LEP 5 0 0 0 0 0 10 0	3379	4	80	1	20	0	0	0	0	2.2	28	4.8	37	4.2	32	4.4	28	2.8	31	3.8	42	
	Non-LEP (Monitored 1st Year)	---	---	---	---	---	---	---	---	---	---	---	---	---	---	---	---	---	---	---	---	---	
	Non-LEP (Monitored 2nd Year)	---	---	---	---	---	---	---	---	---	---	---	---	---	---	---	---	---	---	---	---	---	
	Non-LEP (Monitored 3rd Year)	---	---	---	---	---	---	---	---	---	---	---	---	---	---	---	---	---	---	---	---	---	
	Non-LEP (Monitored 4th Year)	---	---	---	---	---	---	---	---	---	---	---	---	---	---	---	---	---	---	---	---	---	
	Other Non-LEP	10	3596	7	70	3	30	2	20	0	0	3.1	39	5.4	42	4.9	38	6.4	40	3.8	42	4.5	50
	No Information Provided	---	---	---	---	---	---	---	---	---	---	---	---	---	---	---	---	---	---	---	---	---	
Bilingual	Participants 0 15 0	3524	11	73	4	27	2	13	0	0	2.8	35	5.2	40	4.7	36	5.7	36	3.5	39	4.3	47	
	Nonparticipants	---	---	---	---	---	---	---	---	---	---	---	---	---	---	---	---	---	---	---	---	---	
	No Information Provided	---	---	---	---	---	---	---	---	---	---	---	---	---	---	---	---	---	---	---	---	---	
ESL	Participants 5 10 0	3379 3596	4 7	80 70	1 3	20 30	0 2	0 20	0 0	0 0	2.2 3.1	28 39	4.8 5.4	37 42	4.2 4.9	32 38	4.4 6.4	28 40	2.8 3.8	31 42	3.8 4.5	42 50	
	Nonparticipants	---	---	---	---	---	---	---	---	---	---	---	---	---	---	---	---	---	---	---	---	---	
	No Information Provided	---	---	---	---	---	---	---	---	---	---	---	---	---	---	---	---	---	---	---	---	---	
Special Education	Yes 1 14 0	3536	10	71	4	29	2	14	0	0	2.9	36	5.3	41	4.7	36	5.9	37	3.6	40	4.2	47	
	No	---	---	---	---	---	---	---	---	---	---	---	---	---	---	---	---	---	---	---	---	---	
	No Information Provided	---	---	---	---	---	---	---	---	---	---	---	---	---	---	---	---	---	---	---	---	---	
Gifted/Talented	Participants 0 15 0	3524	11	73	4	27	2	13	0	0	2.8	35	5.2	40	4.7	36	5.7	36	3.5	39	4.3	47	
	Nonparticipants	---	---	---	---	---	---	---	---	---	---	---	---	---	---	---	---	---	---	---	---	---	
	No Information Provided	---	---	---	---	---	---	---	---	---	---	---	---	---	---	---	---	---	---	---	---	---	
At-Risk	Yes 10 5 0	3484 3603	7 4	70 80	3 1	30 20	1 1	10 20	0 0	0 0	2.5 3.4	31 43	5.1 5.4	39 42	4.4 5.2	34 40	5.4 6.4	34 40	3.5 3.4	39 38	4.2 4.4	47 49	
	No	---	---	---	---	---	---	---	---	---	---	---	---	---	---	---	---	---	---	---	---	---	
	No Information Provided	---	---	---	---	---	---	---	---	---	---	---	---	---	---	---	---	---	---	---	---	---	
Career/Technical Education	Participants 6 9 0	3764 3364	4 7	67 78	2 2	33 22	1 1	17 11	0 0	0 0	4.2 1.9	52 24	6.3 4.4	49 34	5.7 4.0	44 31	7.0 4.9	44 31	4.2 3.0	46 33	5.2 3.7	57 41	
	Nonparticipants	---	---	---	---	---	---	---	---	---	---	---	---	---	---	---	---	---	---	---	---	---	
	No Information Provided	---	---	---	---	---	---	---	---	---	---	---	---	---	---	---	---	---	---	---	---	---	



STATE OF TEXAS ASSESSMENTS OF ACADEMIC READINESS
Constructed Responses Summary Report
ENGLISH III
Retested Students

STATEWIDE PRELIMINARY

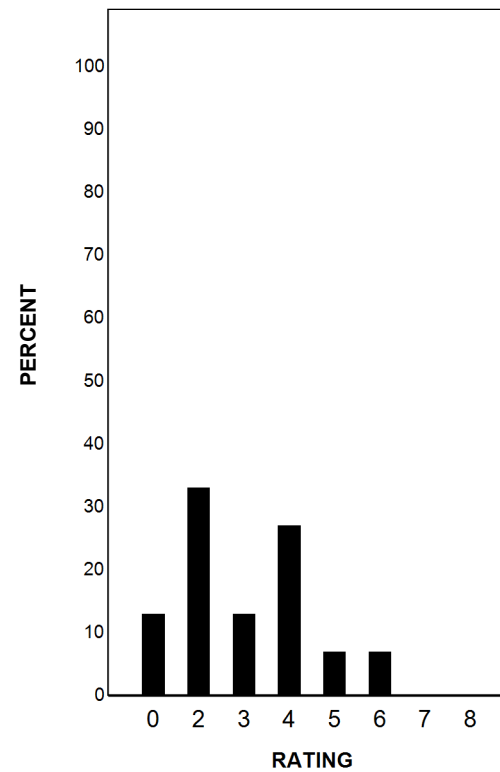
Report Date: SUMMER 2019
Date of Testing: SPRING 2019

--- = No Data Reported For Fewer Than Five Students

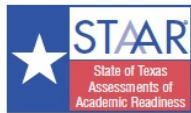
Written Composition Rating Summary

Analytical Composition

Rating	#	%
0	2	13
2	5	33
3	2	13
4	4	27
5	1	7
6	1	7
7	0	0
8	0	0
Total	15	100



Each composition has been scored independently by two readers. The written composition rating of 0-8 represents the summation of these scores.



STATEWIDE

STATE OF TEXAS ASSESSMENTS OF ACADEMIC READINESS

Summary Report

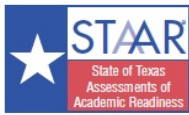
ALGEBRA II

All Students

Report Date: SPRING 2016

Date of Testing: SPRING 2016

Administration Summary			Number of Students Tested	Average Scale Score	PASSED				DID NOT PASS		Results for Each Reporting Category											
											1		2		3		4		5		6	
Number	Percent	Level II: Satisfactory			Level III: Advanced	Level I: Unsatisfactory	Number and Algebraic Methods	Describing and Graphing Functions and Their Inverses	Writing and Solving Systems of Equations and Inequalities	Quadratic and Square Root Functions, Equations, and Inequalities	Exponential and Logarithmic Functions and Equations	Other Functions, Equations, and Inequalities										
Students Tested	14252												93									
Students Not Tested																						
Absent	1107												7									
Other	17												0									
Total Documents Submitted	15376	100																				
Legend					Number of Items Tested																	
--- = No Data Reported For Fewer Than Five Students					9		8		7		10		6		10							
			Avg. # of Items / % Correct																			
			#	%	#	%	#	%	#	%	#	%	#	%	#	%	#	%				
All Students			14252	3912	11265	79	2532	18	2987	21	5.2	58	4.1	51	3.8	55	5.4	54	3.3	55	5.1	51
Male			7056	3908	5491	78	1318	19	1565	22	5.2	58	4.1	52	3.7	54	5.3	53	3.3	56	5.1	51
Female			7193	3917	5772	80	1214	17	1421	20	5.2	58	4.1	51	3.9	56	5.4	54	3.3	55	5.2	52
No Information Provided			3	---	---	---	---	---	---	---	---	---	---	---	---	---	---	---	---	---	---	---
Hispanic/Latino			8787	3874	6751	77	1408	16	2036	23	5.0	56	4.0	50	3.8	54	5.2	52	3.2	53	5.0	50
American Indian or Alaska Native			52	3875	38	73	8	15	14	27	5.2	58	4.6	57	3.6	51	5.2	52	3.0	50	4.9	49
Asian			273	4383	252	92	134	49	21	8	6.6	73	5.4	68	4.9	70	7.2	72	4.3	71	6.8	68
Black or African American			1082	3735	731	68	97	9	351	32	4.5	50	3.5	44	3.5	49	4.6	46	2.8	47	4.5	45
Native Hawaiian or Other Pacific Islander			13	4070	12	92	2	15	1	8	5.8	65	4.9	62	4.6	66	5.7	57	4.1	68	5.6	56
White			3857	4015	3325	86	852	22	532	14	5.7	63	4.4	55	4.0	57	5.9	59	3.6	60	5.5	55
Two or More Races			183	3944	153	84	30	16	30	16	5.3	59	4.1	51	3.9	56	5.4	54	3.4	56	5.3	53
No Information Provided			5	3889	3	60	1	20	2	40	5.4	60	4.0	50	4.2	60	5.0	50	3.0	50	4.8	48
Economically Disadvantaged	Yes		7988	3845	5957	75	1191	15	2031	25	4.9	55	3.9	49	3.7	53	5.1	51	3.1	52	4.9	49
	No		6263	3998	5307	85	1340	21	956	15	5.6	62	4.3	54	4.0	57	5.8	58	3.5	59	5.5	55
	No Information Provided		1	---	---	---	---	---	---	---	---	---	---	---	---	---	---	---	---	---	---	---
Title I, Part A	Participants		8491	3873	6422	76	1395	16	2069	24	5.0	56	4.0	50	3.8	55	5.2	52	3.2	53	4.9	49
	Nonparticipants		5760	3971	4842	84	1136	20	918	16	5.5	61	4.3	53	3.9	55	5.7	57	3.5	58	5.4	54
	No Information Provided		1	---	---	---	---	---	---	---	---	---	---	---	---	---	---	---	---	---	---	---
Migrant	Yes		145	3683	89	61	15	10	56	39	4.2	47	3.4	43	3.3	47	4.4	44	2.6	44	4.3	43
	No		14105	3915	11175	79	2516	18	2930	21	5.2	58	4.1	51	3.9	55	5.4	54	3.3	55	5.1	51
	No Information Provided		2	---	---	---	---	---	---	---	---	---	---	---	---	---	---	---	---	---	---	---
Limited English Proficient	Current LEP		848	3612	472	56	61	7	376	44	4.1	45	3.3	41	3.0	43	4.1	41	2.5	42	4.0	40
	Non-LEP (Monitored 1st Year)		141	3995	126	89	31	22	15	11	5.6	62	4.1	51	4.1	59	5.7	57	3.6	60	5.3	53
	Non-LEP (Monitored 2nd Year)		169	3839	129	76	26	15	40	24	4.9	55	3.8	47	3.7	53	5.1	51	3.0	51	5.0	50
	Other Non-LEP		13093	3932	10537	80	2413	18	2556	20	5.3	59	4.1	52	3.9	56	5.5	55	3.4	56	5.2	52
	No Information Provided		1	---	---	---	---	---	---	---	---	---	---	---	---	---	---	---	---	---	---	---
Bilingual	Participants		1	---	---	---	---	---	---	---	---	---	---	---	---	---	---	---	---	---	---	---
	Nonparticipants		14248	3912	11262	79	2530	18	2986	21	5.2	58	4.1	51	3.8	55	5.4	54	3.3	55	5.1	51
	No Information Provided		3	---	---	---	---	---	---	---	---	---	---	---	---	---	---	---	---	---	---	---
ESL	Participants		839	3626	473	56	67	8	366	44	4.1	46	3.3	41	3.1	44	4.1	41	2.5	42	4.0	40
	Nonparticipants		13411	3930	10790	80	2463	18	2621	20	5.3	58	4.1	52	3.9	56	5.5	55	3.4	56	5.2	52
	No Information Provided		2	---	---	---	---	---	---	---	---	---	---	---	---	---	---	---	---	---	---	---
Special Education	Yes		401	3478	170	42	12	3	231	58	3.5	39	3.0	38	2.5	36	3.3	33	2.2	37	3.5	35
	No		13850	3925	11094	80	2519	18	2756	20	5.2	58	4.1	51	3.9	55	5.4	54	3.3	56	5.2	52
	No Information Provided		1	---	---	---	---	---	---	---	---	---	---	---	---	---	---	---	---	---	---	---
Gifted/Talented	Participants		1334	4355	1251	94	636	48	83	6	6.6	73	5.4	68	5.0	71	7.1	71	4.2	70	6.7	67
	Nonparticipants		12917	3867	10013	78	1895	15	2904	22	5.1	56	3.9	49	3.7	53	5.2	52	3.2	54	5.0	50
	No Information Provided		1	---	---	---	---	---	---	---	---	---	---	---	---	---	---	---	---	---	---	---
At-Risk	Yes		5579	3653	3593	64	304	5	1986	36	4.3	48	3.4	42	3.1	45	4.2	42	2.7	45	4.2	42
	No		8670	4079	7669	88	2227	26	1001	12	5.8	64	4.6	57	4.3	61	6.1	61	3.7	62	5.7	57
	No Information Provided		3	---	---	---	---	---	---	---	---	---	---	---	---	---	---	---	---	---	---	---
Career/Technical Education	Participants		9425	3861	7225	77	1404	15	2200	23	5.0	56	3.9	49	3.7	53	5.2	52	3.2	53	4.9	49
	Nonparticipants		4826	4013	4039	84	1127	23	787	16	5.6	62	4.4	55	4.2	59	5.8	58	3.5	59	5.5	55
	No Information Provided		1	---	---	---	---	---	---	---	---	---	---	---	---	---	---	---	---	---	---	---



STATEWIDE

STATE OF TEXAS ASSESSMENTS OF ACADEMIC READINESS

Summary Report

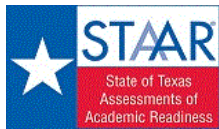
ALGEBRA II

First-Time Tested Students

Report Date: SPRING 2016

Date of Testing: SPRING 2016

Administration Summary			Number of Students Tested	Average Scale Score	PASSED				DID NOT PASS		Results for Each Reporting Category											
											1		2		3		4		5		6	
Number	Percent	Level II: Satisfactory			Level III: Advanced	Level I: Unsatisfactory	Number and Algebraic Methods	Describing and Graphing Functions and Their Inverses	Writing and Solving Systems of Equations and Inequalities	Quadratic and Square Root Functions, Equations, and Inequalities	Exponential and Logarithmic Functions and Equations	Other Functions, Equations, and Inequalities										
Students Tested	14252												93									
Students Not Tested																						
Absent	1107												7									
Other	17												0									
Total Documents Submitted	15376	100																				
Legend					Number of Items Tested																	
--- = No Data Reported For Fewer Than Five Students					9		8		7		10		6		10							
					Avg. # of Items / % Correct																	
			#	%	#	%	#	%	#	%	#	%	#	%	#	%	#	%				
All Students			14252	3912	11265	79	2532	18	2987	21	5.2	58	4.1	51	3.8	55	5.4	54	3.3	55	5.1	51
Male			7056	3908	5491	78	1318	19	1565	22	5.2	58	4.1	52	3.7	54	5.3	53	3.3	56	5.1	51
Female			7193	3917	5772	80	1214	17	1421	20	5.2	58	4.1	51	3.9	56	5.4	54	3.3	55	5.2	52
No Information Provided			3	---	---	---	---	---	---	---	---	---	---	---	---	---	---	---	---	---	---	---
Hispanic/Latino			8787	3874	6751	77	1408	16	2036	23	5.0	56	4.0	50	3.8	54	5.2	52	3.2	53	5.0	50
American Indian or Alaska Native			52	3875	38	73	8	15	14	27	5.2	58	4.6	57	3.6	51	5.2	52	3.0	50	4.9	49
Asian			273	4383	252	92	134	49	21	8	6.6	73	5.4	68	4.9	70	7.2	72	4.3	71	6.8	68
Black or African American			1082	3735	731	68	97	9	351	32	4.5	50	3.5	44	3.5	49	4.6	46	2.8	47	4.5	45
Native Hawaiian or Other Pacific Islander			13	4070	12	92	2	15	1	8	5.8	65	4.9	62	4.6	66	5.7	57	4.1	68	5.6	56
White			3857	4015	3325	86	852	22	532	14	5.7	63	4.4	55	4.0	57	5.9	59	3.6	60	5.5	55
Two or More Races			183	3944	153	84	30	16	30	16	5.3	59	4.1	51	3.9	56	5.4	54	3.4	56	5.3	53
No Information Provided			5	3889	3	60	1	20	2	40	5.4	60	4.0	50	4.2	60	5.0	50	3.0	50	4.8	48
Economically Disadvantaged	Yes		7988	3845	5957	75	1191	15	2031	25	4.9	55	3.9	49	3.7	53	5.1	51	3.1	52	4.9	49
	No		6263	3998	5307	85	1340	21	956	15	5.6	62	4.3	54	4.0	57	5.8	58	3.5	59	5.5	55
	No Information Provided		1	---	---	---	---	---	---	---	---	---	---	---	---	---	---	---	---	---	---	---
Title I, Part A	Participants		8491	3873	6422	76	1395	16	2069	24	5.0	56	4.0	50	3.8	55	5.2	52	3.2	53	4.9	49
	Nonparticipants		5760	3971	4842	84	1136	20	918	16	5.5	61	4.3	53	3.9	55	5.7	57	3.5	58	5.4	54
	No Information Provided		1	---	---	---	---	---	---	---	---	---	---	---	---	---	---	---	---	---	---	---
Migrant	Yes		145	3683	89	61	15	10	56	39	4.2	47	3.4	43	3.3	47	4.4	44	2.6	44	4.3	43
	No		14105	3915	11175	79	2516	18	2930	21	5.2	58	4.1	51	3.9	55	5.4	54	3.3	55	5.1	51
	No Information Provided		2	---	---	---	---	---	---	---	---	---	---	---	---	---	---	---	---	---	---	---
Limited English Proficient	Current LEP		848	3612	472	56	61	7	376	44	4.1	45	3.3	41	3.0	43	4.1	41	2.5	42	4.0	40
	Non-LEP (Monitored 1st Year)		141	3995	126	89	31	22	15	11	5.6	62	4.1	51	4.1	59	5.7	57	3.6	60	5.3	53
	Non-LEP (Monitored 2nd Year)		169	3839	129	76	26	15	40	24	4.9	55	3.8	47	3.7	53	5.1	51	3.0	51	5.0	50
	Other Non-LEP		13093	3932	10537	80	2413	18	2556	20	5.3	59	4.1	52	3.9	56	5.5	55	3.4	56	5.2	52
	No Information Provided		1	---	---	---	---	---	---	---	---	---	---	---	---	---	---	---	---	---	---	---
Bilingual	Participants		1	---	---	---	---	---	---	---	---	---	---	---	---	---	---	---	---	---	---	---
	Nonparticipants		14248	3912	11262	79	2530	18	2986	21	5.2	58	4.1	51	3.8	55	5.4	54	3.3	55	5.1	51
	No Information Provided		3	---	---	---	---	---	---	---	---	---	---	---	---	---	---	---	---	---	---	---
ESL	Participants		839	3626	473	56	67	8	366	44	4.1	46	3.3	41	3.1	44	4.1	41	2.5	42	4.0	40
	Nonparticipants		13411	3930	10790	80	2463	18	2621	20	5.3	58	4.1	52	3.9	56	5.5	55	3.4	56	5.2	52
	No Information Provided		2	---	---	---	---	---	---	---	---	---	---	---	---	---	---	---	---	---	---	---
Special Education	Yes		401	3478	170	42	12	3	231	58	3.5	39	3.0	38	2.5	36	3.3	33	2.2	37	3.5	35
	No		13850	3925	11094	80	2519	18	2756	20	5.2	58	4.1	51	3.9	55	5.4	54	3.3	56	5.2	52
	No Information Provided		1	---	---	---	---	---	---	---	---	---	---	---	---	---	---	---	---	---	---	---
Gifted/Talented	Participants		1334	4355	1251	94	636	48	83	6	6.6	73	5.4	68	5.0	71	7.1	71	4.2	70	6.7	67
	Nonparticipants		12917	3867	10013	78	1895	15	2904	22	5.1	56	3.9	49	3.7	53	5.2	52	3.2	54	5.0	50
	No Information Provided		1	---	---	---	---	---	---	---	---	---	---	---	---	---	---	---	---	---	---	---
At-Risk	Yes		5579	3653	3593	64	304	5	1986	36	4.3	48	3.4	42	3.1	45	4.2	42	2.7	45	4.2	42
	No		8670	4079	7669	88	2227	26	1001	12	5.8	64	4.6	57	4.3	61	6.1	61	3.7	62	5.7	57
	No Information Provided		3	---	---	---	---	---	---	---	---	---	---	---	---	---	---	---	---	---	---	---
Career/Technical Education	Participants		9425	3861	7225	77	1404	15	2200	23	5.0	56	3.9	49	3.7	53	5.2	52	3.2	53	4.9	49
	Nonparticipants		4826	4013	4039	84	1127	23	787	16	5.6	62	4.4	55	4.2	59	5.8	58	3.5	59	5.5	55
	No Information Provided		1	---	---	---	---	---	---	---	---	---	---	---	---	---	---	---	---	---	---	---



STATEWIDE

STATE OF TEXAS ASSESSMENTS OF ACADEMIC READINESS

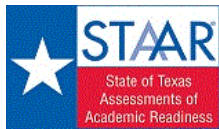
Summary Report

ALGEBRA II

All Students

Report Date: SPRING 2017
Date of Testing: SPRING 2017

Administration Summary			Number of Students Tested	Average Scale Score	Did Not Meet	Approaches		Meets	Masters	Results for Each Reporting Category														
										1		2		3		4		5		6				
										Number and Algebraic Methods		Describing and Graphing Functions and Their Inverses		Writing and Solving Systems of Equations and Inequalities		Quadratic and Square Root Functions, Equations, and Inequalities		Exponential and Logarithmic Functions and Equations		Other Functions, Equations, and Inequalities				
Number	Percent	Number of Items Tested																						
Legend			9		8		7		10		6		10											
--- = No Data Reported For Fewer Than Five Students			Avg. # of Items / % Correct																					
			#	%	#	%	#	%	#	%	#	%	#	%	#	%								
All Students			13326	4015	2572	19	10754	81	6477	49	3105	23	5.7	64	4.1	51	3.7	53	6.0	60	3.3	55	5.9	59
Male			6575	3998	1446	22	5129	78	3103	47	1526	23	5.6	62	4.1	51	3.7	52	5.9	59	3.3	56	5.8	58
Female			6750	4031	1126	17	5624	83	3374	50	1579	23	5.9	65	4.2	52	3.8	55	6.2	62	3.3	55	5.9	59
No Information Provided			1	---	---	---	---	---	---	---	---	---	---	---	---	---	---	---	---	---	---	---	---	---
Hispanic/Latino			8676	4024	1610	19	7066	81	4319	50	2061	24	5.8	64	4.1	52	3.7	53	6.1	61	3.3	56	6.0	60
American Indian or Alaska Native			33	4021	9	27	24	73	20	61	10	30	5.8	65	4.4	55	3.8	55	6.2	62	3.2	54	5.8	58
Asian			217	4530	13	6	204	94	169	78	112	52	7.2	80	5.5	69	4.7	67	7.6	76	4.4	73	7.4	74
Black or African American			1395	3739	494	35	901	65	374	27	144	10	4.9	54	3.3	42	3.2	46	5.0	50	2.6	43	4.7	47
Native Hawaiian or Other Pacific Islander			6	4554	0	0	6	100	6	100	2	33	7.5	83	5.3	67	6.0	86	7.5	75	4.5	75	8.0	80
White			2842	4079	418	15	2424	85	1511	53	742	26	5.9	66	4.3	53	4.0	57	6.3	63	3.6	59	6.0	60
Two or More Races			154	4054	28	18	126	82	76	49	34	22	5.9	65	4.1	51	4.0	58	6.2	62	3.5	58	5.8	58
No Information Provided			3	---	---	---	---	---	---	---	---	---	---	---	---	---	---	---	---	---	---	---	---	---
Economically Disadvantaged	Yes		8348	3980	1735	21	6613	79	3882	47	1791	21	5.6	63	4.0	50	3.7	52	5.9	59	3.2	53	5.8	58
	No		4976	4074	837	17	4139	83	2594	52	1314	26	5.9	66	4.3	53	3.9	56	6.2	62	3.5	59	6.0	60
	No Information Provided		2	---	---	---	---	---	---	---	---	---	---	---	---	---	---	---	---	---	---	---	---	---
Title I, Part A	Participants		8819	4017	1716	19	7103	81	4361	49	2074	24	5.8	64	4.1	52	3.7	53	6.0	60	3.3	55	6.0	60
	Nonparticipants		4504	4009	856	19	3648	81	2114	47	1031	23	5.7	64	4.1	51	3.8	54	6.1	61	3.4	56	5.7	57
	No Information Provided		3	---	---	---	---	---	---	---	---	---	---	---	---	---	---	---	---	---	---	---	---	---
Migrant	Yes		142	3803	39	27	103	73	48	34	18	13	5.1	56	3.7	47	3.1	44	5.3	53	2.8	46	5.5	55
	No		13181	4017	2533	19	10648	81	6428	49	3087	23	5.8	64	4.1	51	3.7	54	6.1	61	3.3	56	5.9	59
	No Information Provided		3	---	---	---	---	---	---	---	---	---	---	---	---	---	---	---	---	---	---	---	---	---
Limited English Proficient	Current LEP		1031	3823	327	32	704	68	371	36	147	14	5.1	57	3.7	46	3.2	45	5.3	53	2.9	48	5.3	53
	Non-LEP (Monitored 1st Year)		211	4170	26	12	185	88	119	56	69	33	6.4	71	4.7	58	3.9	55	6.6	66	3.7	61	6.4	64
	Non-LEP (Monitored 2nd Year)		172	4256	17	10	155	90	113	66	64	37	6.4	71	4.8	60	4.3	62	6.8	68	3.8	63	6.8	68
	Other Non-LEP		11910	4025	2202	18	9708	82	5873	49	2825	24	5.8	64	4.1	52	3.8	54	6.1	61	3.4	56	5.9	59
	No Information Provided		2	---	---	---	---	---	---	---	---	---	---	---	---	---	---	---	---	---	---	---	---	---
Bilingual	Participants		3	---	---	---	---	---	---	---	---	---	---	---	---	---	---	---	---	---	---	---	---	---
	Nonparticipants		13321	4015	2571	19	10750	81	6474	49	3105	23	5.7	64	4.1	51	3.7	53	6.0	60	3.3	55	5.9	59
	No Information Provided		2	---	---	---	---	---	---	---	---	---	---	---	---	---	---	---	---	---	---	---	---	---
ESL	Participants		1011	3823	324	32	687	68	366	36	145	14	5.1	57	3.7	46	3.2	45	5.3	53	2.9	48	5.3	53
	Nonparticipants		12313	4030	2248	18	10065	82	6110	50	2960	24	5.8	64	4.1	52	3.8	54	6.1	61	3.4	56	5.9	59
	No Information Provided		2	---	---	---	---	---	---	---	---	---	---	---	---	---	---	---	---	---	---	---	---	---
Special Education	Yes		479	3531	264	55	215	45	75	16	20	4	3.9	43	3.0	37	2.3	33	4.3	43	2.1	36	4.1	41
	No		12845	4033	2308	18	10537	82	6401	50	3085	24	5.8	65	4.2	52	3.8	54	6.1	61	3.4	56	5.9	59
	No Information Provided		2	---	---	---	---	---	---	---	---	---	---	---	---	---	---	---	---	---	---	---	---	---
Gifted/Talented	Participants		1121	4494	67	6	1054	94	881	79	593	53	7.1	78	5.4	67	4.8	68	7.5	75	4.4	73	7.4	74
	Nonparticipants		12202	3971	2505	21	9697	79	5594	46	2512	21	5.6	63	4.0	50	3.6	52	5.9	59	3.2	54	5.7	57
	No Information Provided		3	---	---	---	---	---	---	---	---	---	---	---	---	---	---	---	---	---	---	---	---	---
At-Risk	Yes		5693	3775	1748	31	3945	69	1759	31	573	10	5.0	55	3.5	44	3.1	44	5.2	52	2.7	46	5.1	51
	No		7631	4194	824	11	6807	89	4717	62	2532	33	6.3	70	4.6	57	4.2	60	6.7	67	3.8	63	6.5	65
	No Information Provided		2	---	---	---	---	---	---	---	---	---	---	---	---	---	---	---	---	---	---	---	---	---
Career/Technical Education	Participants		8893	3924	2046	23	6847	77	3692	42	1599	18	5.5	61	3.9	48	3.5	50	5.8	58	3.1	52	5.5	55
	Nonparticipants		4427	4197	523	12	3904	88	2782	63	1506	34	6.3	70	4.6	58	4.2	59	6.6	66	3.8	63	6.6	66
	No Information Provided		6	3749	3	50	3	50	3	50	0	0	4.5	50	3.5	44	3.2	45	4.5	45	3.2	53	5.5	55



STATEWIDE

STATE OF TEXAS ASSESSMENTS OF ACADEMIC READINESS

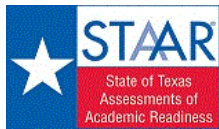
Summary Report

ALGEBRA II

First-Time Tested Students

Report Date: SPRING 2017
Date of Testing: SPRING 2017

Administration Summary			Number of Students Tested	Average Scale Score	Did Not Meet	Approaches	Meets	Masters	Results for Each Reporting Category															
									1		2		3		4		5		6					
Number	Percent	Number and Algebraic Methods							Describing and Graphing Functions and Their Inverses	Writing and Solving Systems of Equations and Inequalities	Quadratic and Square Root Functions, Equations, and Inequalities	Exponential and Logarithmic Functions and Equations	Other Functions, Equations, and Inequalities											
Students Tested	13263													95										
Students Not Tested																								
Absent	607													4										
Other	130	1																						
Total Documents Submitted	14000	100																						
Legend									Number of Items Tested															
--- = No Data Reported For Fewer Than Five Students									9		8		7		10		6		10					
			Avg. # of Items / % Correct																					
			#	%	#	%	#	%	#	%	#	%	#	%	#	%								
All Students			13263	4016	2555	19	10708	81	6453	49	3098	23	5.8	64	4.1	51	3.7	53	6.1	61	3.3	55	5.9	59
Male			6535	3999	1435	22	5100	78	3088	47	1521	23	5.6	62	4.1	51	3.7	52	5.9	59	3.3	56	5.8	58
Female			6727	4031	1120	17	5607	83	3365	50	1577	23	5.9	65	4.2	52	3.8	55	6.2	62	3.3	55	5.9	59
No Information Provided			1	---	---	---	---	---	---	---	---	---	---	---	---	---	---	---	---	---	---	---	---	---
Hispanic/Latino			8620	4026	1594	18	7026	82	4299	50	2056	24	5.8	64	4.2	52	3.7	53	6.1	61	3.3	56	6.0	60
American Indian or Alaska Native			33	4021	9	27	24	73	20	61	10	30	5.8	65	4.4	55	3.8	55	6.2	62	3.2	54	5.8	58
Asian			216	4531	13	6	203	94	168	78	112	52	7.2	80	5.5	69	4.7	67	7.6	76	4.4	73	7.4	74
Black or African American			1392	3738	493	35	899	65	372	27	143	10	4.9	54	3.3	42	3.2	46	5.0	50	2.6	43	4.7	47
Native Hawaiian or Other Pacific Islander			6	4554	0	0	6	100	6	100	2	33	7.5	83	5.3	67	6.0	86	7.5	75	4.5	75	8.0	80
White			2839	4078	418	15	2421	85	1510	53	741	26	5.9	66	4.3	53	4.0	57	6.3	63	3.6	59	6.0	60
Two or More Races			154	4054	28	18	126	82	76	49	34	22	5.9	65	4.1	51	4.0	58	6.2	62	3.5	58	5.8	58
No Information Provided			3	---	---	---	---	---	---	---	---	---	---	---	---	---	---	---	---	---	---	---	---	---
Economically Disadvantaged	Yes		8295	3981	1722	21	6573	79	3862	47	1786	22	5.6	63	4.0	50	3.7	52	5.9	59	3.2	53	5.8	58
	No		4966	4074	833	17	4133	83	2590	52	1312	26	5.9	66	4.3	53	3.9	56	6.2	62	3.5	59	6.0	60
	No Information Provided		2	---	---	---	---	---	---	---	---	---	---	---	---	---	---	---	---	---	---	---	---	---
Title I, Part A	Participants		8760	4019	1700	19	7060	81	4338	50	2068	24	5.8	64	4.1	52	3.7	53	6.0	60	3.3	55	6.0	60
	Nonparticipants		4500	4009	855	19	3645	81	2113	47	1030	23	5.7	64	4.1	51	3.8	54	6.1	61	3.4	56	5.7	57
	No Information Provided		3	---	---	---	---	---	---	---	---	---	---	---	---	---	---	---	---	---	---	---	---	---
Migrant	Yes		140	3824	37	26	103	74	48	34	18	13	5.1	57	3.8	47	3.1	44	5.3	53	2.8	46	5.5	55
	No		13120	4018	2518	19	10602	81	6404	49	3080	23	5.8	64	4.1	51	3.8	54	6.1	61	3.3	56	5.9	59
	No Information Provided		3	---	---	---	---	---	---	---	---	---	---	---	---	---	---	---	---	---	---	---	---	---
Limited English Proficient	Current LEP		1025	3823	326	32	699	68	369	36	146	14	5.1	57	3.7	46	3.1	45	5.3	53	2.9	48	5.3	53
	Non-LEP (Monitored 1st Year)		211	4170	26	12	185	88	119	56	69	33	6.4	71	4.7	58	3.9	55	6.6	66	3.7	61	6.4	64
	Non-LEP (Monitored 2nd Year)		170	4265	16	9	154	91	113	66	64	38	6.4	72	4.8	60	4.4	62	6.8	68	3.8	64	6.8	68
	Other Non-LEP		11855	4026	2187	18	9668	82	5851	49	2819	24	5.8	64	4.1	52	3.8	54	6.1	61	3.4	56	5.9	59
	No Information Provided		2	---	---	---	---	---	---	---	---	---	---	---	---	---	---	---	---	---	---	---	---	---
Bilingual	Participants		3	---	---	---	---	---	---	---	---	---	---	---	---	---	---	---	---	---	---	---	---	---
	Nonparticipants		13258	4016	2554	19	10704	81	6450	49	3098	23	5.8	64	4.1	51	3.7	53	6.1	61	3.3	55	5.9	59
	No Information Provided		2	---	---	---	---	---	---	---	---	---	---	---	---	---	---	---	---	---	---	---	---	---
ESL	Participants		1005	3822	323	32	682	68	364	36	144	14	5.1	57	3.7	46	3.1	45	5.3	53	2.9	48	5.3	53
	Nonparticipants		12256	4031	2232	18	10024	82	6088	50	2954	24	5.8	65	4.2	52	3.8	54	6.1	61	3.4	56	5.9	59
	No Information Provided		2	---	---	---	---	---	---	---	---	---	---	---	---	---	---	---	---	---	---	---	---	---
Special Education	Yes		478	3532	263	55	215	45	75	16	20	4	3.9	43	3.0	37	2.3	33	4.3	43	2.2	36	4.1	41
	No		12783	4034	2292	18	10491	82	6377	50	3078	24	5.8	65	4.2	52	3.8	54	6.1	61	3.4	56	5.9	59
	No Information Provided		2	---	---	---	---	---	---	---	---	---	---	---	---	---	---	---	---	---	---	---	---	---
Gifted/Talented	Participants		1118	4495	67	6	1051	94	879	79	592	53	7.1	78	5.4	67	4.8	68	7.5	75	4.4	73	7.4	74
	Nonparticipants		12142	3971	2488	20	9654	80	5572	46	2506	21	5.6	63	4.0	50	3.6	52	5.9	59	3.2	54	5.7	57
	No Information Provided		3	---	---	---	---	---	---	---	---	---	---	---	---	---	---	---	---	---	---	---	---	---
At-Risk	Yes		5648	3775	1733	31	3915	69	1746	31	569	10	5.0	55	3.5	44	3.1	44	5.2	52	2.7	46	5.1	51
	No		7613	4194	822	11	6791	89	4706	62	2529	33	6.3	70	4.6	57	4.2	60	6.7	67	3.8	63	6.5	65
	No Information Provided		2	---	---	---	---	---	---	---	---	---	---	---	---	---	---	---	---	---	---	---	---	---
Career/Technical Education	Participants		8857	3925	2034	23	6823	77	3680	42	1595	18	5.5	61	3.9	48	3.5	51	5.8	58	3.1	52	5.5	55
	Nonparticipants		4400	4199	518	12	3882	88	2770	63	1503	34	6.3	70	4.6	58	4.2	59	6.6	66	3.8	63	6.6	66
	No Information Provided		6	3749	3	50	3	50	3	50	0	0	4.5	50	3.5	44	3.2	45	4.5	45	3.2	53	5.5	55



STATEWIDE

STATE OF TEXAS ASSESSMENTS OF ACADEMIC READINESS

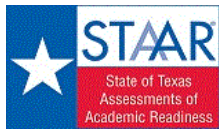
Summary Report

ALGEBRA II

Retested Students

Report Date: SPRING 2017
Date of Testing: SPRING 2017

Administration Summary			Number of Students Tested	Average Scale Score	Did Not Meet	Approaches	Meets	Masters	Results for Each Reporting Category															
									1		2		3		4		5		6					
Number	Percent	Number and Algebraic Methods							Describing and Graphing Functions and Their Inverses	Writing and Solving Systems of Equations and Inequalities	Quadratic and Square Root Functions, Equations, and Inequalities	Exponential and Logarithmic Functions and Equations	Other Functions, Equations, and Inequalities											
Students Tested	63													90										
Students Not Tested																								
Absent	7													10										
Other	0	0																						
Total Documents Submitted	70	100																						
Legend									Number of Items Tested															
--- = No Data Reported For Fewer Than Five Students									9		8		7		10		6		10					
			Avg. # of Items / % Correct																					
			#	%	#	%	#	%	#	%	#	%	#	%	#	%								
All Students			63	3840	17	27	46	73	24	38	7	11	5.0	56	3.5	44	3.3	47	5.5	55	3.2	54	5.3	53
Male			40	3841	11	28	29	73	15	38	5	13	5.1	56	3.6	45	3.3	46	5.5	55	3.4	56	5.3	53
Female			23	3838	6	26	17	74	9	39	2	9	5.0	56	3.5	43	3.4	49	5.7	57	3.0	50	5.3	53
No Information Provided			0	---	---	---	---	---	---	---	---	---	---	---	---	---	---	---	---	---	---	---	---	---
Hispanic/Latino			56	3778	16	29	40	71	20	36	5	9	4.9	55	3.4	43	3.3	47	5.3	53	3.2	53	5.0	50
American Indian or Alaska Native			0	---	---	---	---	---	---	---	---	---	---	---	---	---	---	---	---	---	---	---	---	---
Asian			1	---	---	---	---	---	---	---	---	---	---	---	---	---	---	---	---	---	---	---	---	---
Black or African American			3	---	---	---	---	---	---	---	---	---	---	---	---	---	---	---	---	---	---	---	---	---
Native Hawaiian or Other Pacific Islander			0	---	---	---	---	---	---	---	---	---	---	---	---	---	---	---	---	---	---	---	---	---
White			3	---	---	---	---	---	---	---	---	---	---	---	---	---	---	---	---	---	---	---	---	---
Two or More Races			0	---	---	---	---	---	---	---	---	---	---	---	---	---	---	---	---	---	---	---	---	---
No Information Provided			0	---	---	---	---	---	---	---	---	---	---	---	---	---	---	---	---	---	---	---	---	---
Economically Disadvantaged	Yes		53	3828	13	25	40	75	20	38	5	9	5.1	56	3.5	44	3.4	49	5.4	54	3.2	53	5.2	52
	No		10	3903	4	40	6	60	4	40	2	20	5.0	56	3.6	45	2.8	40	6.0	60	3.4	57	5.8	58
	No Information Provided		0	---	---	---	---	---	---	---	---	---	---	---	---	---	---	---	---	---	---	---	---	---
Title I, Part A	Participants		59	3805	16	27	43	73	23	39	6	10	5.0	56	3.5	43	3.3	47	5.4	54	3.2	53	5.3	53
	Nonparticipants		4	---	---	---	---	---	---	---	---	---	---	---	---	---	---	---	---	---	---	---	---	---
	No Information Provided		0	---	---	---	---	---	---	---	---	---	---	---	---	---	---	---	---	---	---	---	---	---
Migrant	Yes		2	---	---	---	---	---	---	---	---	---	---	---	---	---	---	---	---	---	---	---	---	---
	No		61	3890	15	25	46	75	24	39	7	11	5.1	57	3.6	45	3.4	49	5.6	56	3.3	55	5.4	54
	No Information Provided		0	---	---	---	---	---	---	---	---	---	---	---	---	---	---	---	---	---	---	---	---	---
Limited English Proficient	Current LEP		6	3891	1	17	5	83	2	33	1	17	5.3	59	3.8	48	3.5	50	5.7	57	3.7	61	5.2	52
	Non-LEP (Monitored 1st Year)		0	---	---	---	---	---	---	---	---	---	---	---	---	---	---	---	---	---	---	---	---	---
	Non-LEP (Monitored 2nd Year)		2	---	---	---	---	---	---	---	---	---	---	---	---	---	---	---	---	---	---	---	---	---
	Other Non-LEP		55	3847	15	27	40	73	22	40	6	11	5.1	56	3.5	44	3.3	47	5.5	55	3.2	54	5.4	54
	No Information Provided		0	---	---	---	---	---	---	---	---	---	---	---	---	---	---	---	---	---	---	---	---	---
Bilingual	Participants		0	---	---	---	---	---	---	---	---	---	---	---	---	---	---	---	---	---	---	---	---	---
	Nonparticipants		63	3840	17	27	46	73	24	38	7	11	5.0	56	3.5	44	3.3	47	5.5	55	3.2	54	5.3	53
	No Information Provided		0	---	---	---	---	---	---	---	---	---	---	---	---	---	---	---	---	---	---	---	---	---
ESL	Participants		6	3891	1	17	5	83	2	33	1	17	5.3	59	3.8	48	3.5	50	5.7	57	3.7	61	5.2	52
	Nonparticipants		57	3834	16	28	41	72	22	39	6	11	5.0	56	3.5	44	3.3	47	5.5	55	3.2	53	5.3	53
	No Information Provided		0	---	---	---	---	---	---	---	---	---	---	---	---	---	---	---	---	---	---	---	---	---
Special Education	Yes		1	---	---	---	---	---	---	---	---	---	---	---	---	---	---	---	---	---	---	---	---	---
	No		62	3851	16	26	46	74	24	39	7	11	5.1	56	3.6	45	3.4	48	5.5	55	3.3	54	5.4	54
	No Information Provided		0	---	---	---	---	---	---	---	---	---	---	---	---	---	---	---	---	---	---	---	---	---
Gifted/Talented	Participants		3	---	---	---	---	---	---	---	---	---	---	---	---	---	---	---	---	---	---	---	---	---
	Nonparticipants		60	3826	17	28	43	72	22	37	6	10	5.0	55	3.5	44	3.3	47	5.5	55	3.2	53	5.2	52
	No Information Provided		0	---	---	---	---	---	---	---	---	---	---	---	---	---	---	---	---	---	---	---	---	---
At-Risk	Yes		45	3711	15	33	30	67	13	29	4	9	4.6	52	3.3	41	3.0	43	5.1	51	2.9	49	4.9	49
	No		18	4163	2	11	16	89	11	61	3	17	6.1	67	4.2	52	4.1	58	6.6	66	3.9	66	6.2	62
	No Information Provided		0	---	---	---	---	---	---	---	---	---	---	---	---	---	---	---	---	---	---	---	---	---
Career/Technical Education	Participants		36	3759	12	33	24	67	12	33	4	11	4.7	52	3.3	41	2.9	42	5.3	53	3.1	52	5.0	50
	Nonparticipants		27	3948	5	19	22	81	12	44	3	11	5.5	61	3.9	49	3.8	54	5.8	58	3.3	56	5.7	57
	No Information Provided		0	---	---	---	---	---	---	---	---	---	---	---	---	---	---	---	---	---	---	---	---	---



STATEWIDE

STATE OF TEXAS ASSESSMENTS OF ACADEMIC READINESS

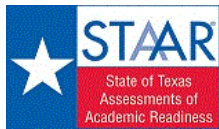
Summary Report

ALGEBRA II

All Students

Report Date: SUMMER 2018
Date of Testing: SPRING 2018

Administration Summary			Number of Students Tested	Average Scale Score	Did Not Meet	Approaches	Meets	Masters	Results for Each Reporting Category															
									1		2		3		4		5		6					
Number	Percent	Number and Algebraic Methods							Describing and Graphing Functions and Their Inverses	Writing and Solving Systems of Equations and Inequalities	Quadratic and Square Root Functions, Equations, and Inequalities	Exponential and Logarithmic Functions and Equations	Other Functions, Equations, and Inequalities											
Students Tested	11965													95										
Students Not Tested																								
Absent	568													5										
Other	3													0										
Total Documents Submitted	12536	100																						
Legend									Number of Items Tested															
--- = No Data Reported For Fewer Than Five Students									9		8		7		10		6		10					
									Avg. # of Items / % Correct															
									#	%	#	%	#	%	#	%	#	%	#	%	#	%		
All Students			11965	4009	2729	23	9236	77	5822	49	2945	25	5.0	55	3.8	47	4.4	62	6.4	64	2.7	45	5.8	58
Male			5840	3983	1504	26	4336	74	2733	47	1409	24	4.9	54	3.8	47	4.3	61	6.2	62	2.7	44	5.6	56
Female			6122	4034	1223	20	4899	80	3089	50	1536	25	5.1	56	3.8	47	4.5	64	6.5	65	2.7	45	5.9	59
No Information Provided			3	---	---	---	---	---	---	---	---	---	---	---	---	---	---	---	---	---	---	---	---	---
Hispanic/Latino			8355	4019	1842	22	6513	78	4124	49	2085	25	5.0	56	3.8	47	4.4	63	6.4	64	2.7	45	5.8	58
American Indian or Alaska Native			31	4015	8	26	23	74	14	45	7	23	5.0	56	3.6	46	3.9	55	6.5	65	2.6	44	6.2	62
Asian			153	4582	5	3	148	97	120	78	89	58	6.6	73	5.2	65	5.3	76	8.0	80	4.2	69	7.8	78
Black or African American			905	3740	357	39	548	61	276	30	112	12	4.1	46	3.2	40	3.6	52	5.2	52	2.0	34	4.8	48
Native Hawaiian or Other Pacific Islander			9	3601	4	44	5	56	3	33	1	11	3.7	41	2.7	33	3.7	52	4.8	48	2.3	39	4.2	42
White			2344	4045	478	20	1866	80	1209	52	612	26	5.0	55	3.9	49	4.5	64	6.5	65	2.9	48	5.9	59
Two or More Races			160	3998	31	19	129	81	75	47	39	24	4.9	55	3.6	44	4.3	62	6.5	65	2.7	45	5.9	59
No Information Provided			8	3614	4	50	4	50	1	13	0	0	4.1	46	2.8	34	3.3	46	5.0	50	1.3	21	4.1	41
Economically Disadvantaged	Yes		7899	3969	1966	25	5933	75	3637	46	1771	22	4.9	54	3.7	46	4.3	61	6.2	62	2.6	43	5.6	56
	No		4056	4089	759	19	3297	81	2184	54	1174	29	5.2	57	4.0	50	4.6	65	6.7	67	2.9	49	6.0	60
	No Information Provided		10	3607	4	40	6	60	1	10	0	0	4.3	48	2.7	34	3.3	47	4.5	45	1.4	23	4.1	41
Title I, Part A	Participants		8705	4006	1986	23	6719	77	4198	48	2117	24	5.0	56	3.8	47	4.3	62	6.3	63	2.6	44	5.7	57
	Nonparticipants		3252	4018	739	23	2513	77	1623	50	828	25	4.9	54	3.8	47	4.4	63	6.4	64	2.8	47	5.8	58
	No Information Provided		8	3614	4	50	4	50	1	13	0	0	4.1	46	2.8	34	3.3	46	5.0	50	1.3	21	4.1	41
Migrant	Yes		103	3684	44	43	59	57	26	25	11	11	4.1	46	2.9	37	3.6	51	5.1	51	1.9	31	4.4	44
	No		11849	4013	2679	23	9170	77	5794	49	2933	25	5.0	55	3.8	47	4.4	62	6.4	64	2.7	45	5.8	58
	No Information Provided		13	3664	6	46	7	54	2	15	1	8	4.4	49	2.5	31	3.6	52	5.1	51	1.5	24	4.5	45
Limited English Proficient	Current LEP		1346	3784	476	35	870	65	433	32	164	12	4.3	48	3.2	40	3.6	52	5.6	56	2.1	35	4.9	49
	Non-LEP (Monitored 1st Year)		212	4102	37	17	175	83	121	57	70	33	5.3	59	4.2	52	4.5	65	6.8	68	2.8	47	6.1	61
	Non-LEP (Monitored 2nd Year)		314	4150	33	11	281	89	183	58	86	27	5.5	62	4.1	52	4.7	67	6.9	69	2.9	49	6.3	63
	Other Non-LEP		10084	4033	2179	22	7905	78	5084	50	2625	26	5.0	56	3.8	48	4.4	64	6.5	65	2.8	46	5.8	58
	No Information Provided		9	3613	4	44	5	56	1	11	0	0	4.2	47	2.7	33	3.4	49	4.7	47	1.3	22	4.1	41
Bilingual	Participants		2	---	---	---	---	---	---	---	---	---	---	---	---	---	---	---	---	---	---	---	---	---
	Nonparticipants		11954	4010	2725	23	9229	77	5820	49	2945	25	5.0	55	3.8	47	4.4	62	6.4	64	2.7	45	5.8	58
	No Information Provided		9	3613	4	44	5	56	1	11	0	0	4.2	47	2.7	33	3.4	49	4.7	47	1.3	22	4.1	41
ESL	Participants		1313	3786	464	35	849	65	425	32	161	12	4.4	49	3.2	40	3.6	52	5.6	56	2.1	35	4.9	49
	Nonparticipants		10643	4037	2261	21	8382	79	5396	51	2784	26	5.0	56	3.8	48	4.5	64	6.5	65	2.8	46	5.9	59
	No Information Provided		9	3613	4	44	5	56	1	11	0	0	4.2	47	2.7	33	3.4	49	4.7	47	1.3	22	4.1	41
Special Education	Yes		440	3463	282	64	158	36	54	12	21	5	3.2	36	2.5	31	2.6	37	4.0	40	1.5	25	3.7	37
	No		11516	4030	2443	21	9073	79	5767	50	2924	25	5.0	56	3.8	48	4.4	63	6.5	65	2.7	46	5.8	58
	No Information Provided		9	3613	4	44	5	56	1	11	0	0	4.2	47	2.7	33	3.4	49	4.7	47	1.3	22	4.1	41
Gifted/Talented	Participants		876	4496	69	8	807	92	684	78	485	55	6.3	70	5.1	63	5.5	79	7.8	78	3.9	64	7.4	74
	Nonparticipants		11080	3971	2656	24	8424	76	5137	46	2460	22	4.9	54	3.7	46	4.3	61	6.3	63	2.6	43	5.6	56
	No Information Provided		9	3613	4	44	5	56	1	11	0	0	4.2	47	2.7	33	3.4	49	4.7	47	1.3	22	4.1	41
At-Risk	Yes		5364	3769	1917	36	3447	64	1680	31	621	12	4.3	48	3.1	39	3.7	53	5.5	55	2.1	35	4.8	48
	No		6592	4205	808	12	5784	88	4141	63	2324	35	5.5	61	4.3	54	4.9	70	7.1	71	3.2	53	6.5	65
	No Information Provided		9	3613	4	44	5	56	1	11	0	0	4.2	47	2.7	33	3.4	49	4.7	47	1.3	22	4.1	41
Career/Technical Education	Participants		8000	3968	1988	25	6012	75	3665	46	1794	22	4.8	54	3.7	46	4.3	61	6.3	63	2.6	43	5.6	56
	Nonparticipants		3961	4093	739	19	3222	81	2156	54	1151	29	5.2	58	4.0	50	4.6	65	6.6	66	2.9	48	6.1	61
	No Information Provided		4	---	---	---	---	---	---	---	---	---	---	---	---	---	---	---	---	---	---	---	---	---



STATEWIDE

STATE OF TEXAS ASSESSMENTS OF ACADEMIC READINESS

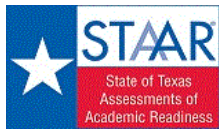
Summary Report

ALGEBRA II

First-Time Tested Students

Report Date: SUMMER 2018
Date of Testing: SPRING 2018

Administration Summary			Number of Students Tested	Average Scale Score	Did Not Meet	Approaches	Meets	Masters	Results for Each Reporting Category															
									1		2		3		4		5		6					
Number	Percent	Number and Algebraic Methods							Describing and Graphing Functions and Their Inverses	Writing and Solving Systems of Equations and Inequalities	Quadratic and Square Root Functions, Equations, and Inequalities	Exponential and Logarithmic Functions and Equations	Other Functions, Equations, and Inequalities											
Students Tested	11890													95										
Students Not Tested																								
Absent	558													4										
Other	3	0																						
Total Documents Submitted	12451	100																						
Legend									Number of Items Tested															
--- = No Data Reported For Fewer Than Five Students									9		8		7		10		6		10					
									Avg. # of Items / % Correct															
			#	%	#	%	#	%	#	%	#	%	#	%	#	%								
All Students			11890	4012	2693	23	9197	77	5809	49	2942	25	5.0	55	3.8	47	4.4	62	6.4	64	2.7	45	5.8	58
Male			5792	3987	1479	26	4313	74	2726	47	1407	24	4.9	54	3.8	47	4.3	61	6.2	62	2.7	45	5.6	56
Female			6095	4036	1212	20	4883	80	3083	51	1535	25	5.1	56	3.8	47	4.5	64	6.5	65	2.7	45	5.9	59
No Information Provided			3	---	---	---	---	---	---	---	---	---	---	---	---	---	---	---	---	---	---	---	---	---
Hispanic/Latino			8298	4022	1818	22	6480	78	4111	50	2082	25	5.0	56	3.8	47	4.4	63	6.4	64	2.7	45	5.8	58
American Indian or Alaska Native			31	4015	8	26	23	74	14	45	7	23	5.0	56	3.6	46	3.9	55	6.5	65	2.6	44	6.2	62
Asian			153	4582	5	3	148	97	120	78	89	58	6.6	73	5.2	65	5.3	76	8.0	80	4.2	69	7.8	78
Black or African American			892	3747	347	39	545	61	276	31	112	13	4.1	46	3.2	40	3.6	52	5.2	52	2.1	34	4.8	48
Native Hawaiian or Other Pacific Islander			9	3601	4	44	5	56	3	33	1	11	3.7	41	2.7	33	3.7	52	4.8	48	2.3	39	4.2	42
White			2340	4046	477	20	1863	80	1209	52	612	26	5.0	55	3.9	49	4.5	64	6.5	65	2.9	48	5.9	59
Two or More Races			159	4003	30	19	129	81	75	47	39	25	4.9	55	3.6	45	4.4	62	6.5	65	2.7	45	5.9	59
No Information Provided			8	3614	4	50	4	50	1	13	0	0	4.1	46	2.8	34	3.3	46	5.0	50	1.3	21	4.1	41
Economically Disadvantaged	Yes		7839	3972	1938	25	5901	75	3626	46	1769	23	4.9	54	3.7	46	4.3	61	6.2	62	2.6	43	5.6	56
	No		4041	4091	751	19	3290	81	2182	54	1173	29	5.2	57	4.0	50	4.6	65	6.7	67	2.9	49	6.0	60
	No Information Provided		10	3607	4	40	6	60	1	10	0	0	4.3	48	2.7	34	3.3	47	4.5	45	1.4	23	4.1	41
Title I, Part A	Participants		8638	4010	1954	23	6684	77	4185	48	2114	24	5.0	56	3.8	47	4.4	62	6.4	64	2.6	44	5.8	58
	Nonparticipants		3244	4020	735	23	2509	77	1623	50	828	26	4.9	54	3.8	47	4.4	63	6.4	64	2.8	47	5.8	58
	No Information Provided		8	3614	4	50	4	50	1	13	0	0	4.1	46	2.8	34	3.3	46	5.0	50	1.3	21	4.1	41
Migrant	Yes		101	3689	43	43	58	57	26	26	11	11	4.1	46	2.9	37	3.6	51	5.1	51	1.8	31	4.5	45
	No		11776	4015	2644	22	9132	78	5781	49	2930	25	5.0	55	3.8	47	4.4	63	6.4	64	2.7	45	5.8	58
	No Information Provided		13	3664	6	46	7	54	2	15	1	8	4.4	49	2.5	31	3.6	52	5.1	51	1.5	24	4.5	45
Limited English Proficient	Current LEP		1334	3786	471	35	863	65	431	32	164	12	4.4	48	3.2	40	3.6	52	5.6	56	2.1	35	4.9	49
	Non-LEP (Monitored 1st Year)		210	4104	37	18	173	82	120	57	70	33	5.4	59	4.2	52	4.5	65	6.8	68	2.8	47	6.1	61
	Non-LEP (Monitored 2nd Year)		312	4157	32	10	280	90	183	59	86	28	5.6	62	4.2	52	4.7	67	6.9	69	2.9	49	6.3	63
	Other Non-LEP		10025	4036	2149	21	7876	79	5074	51	2622	26	5.0	56	3.8	48	4.5	64	6.5	65	2.8	46	5.9	59
	No Information Provided		9	3613	4	44	5	56	1	11	0	0	4.2	47	2.7	33	3.4	49	4.7	47	1.3	22	4.1	41
Bilingual	Participants		2	---	---	---	---	---	---	---	---	---	---	---	---	---	---	---	---	---	---	---	---	---
	Nonparticipants		11879	4012	2689	23	9190	77	5807	49	2942	25	5.0	55	3.8	47	4.4	62	6.4	64	2.7	45	5.8	58
	No Information Provided		9	3613	4	44	5	56	1	11	0	0	4.2	47	2.7	33	3.4	49	4.7	47	1.3	22	4.1	41
ESL	Participants		1301	3788	459	35	842	65	423	33	161	12	4.4	49	3.2	40	3.6	52	5.6	56	2.1	35	4.9	49
	Nonparticipants		10580	4040	2230	21	8350	79	5385	51	2781	26	5.1	56	3.9	48	4.5	64	6.5	65	2.8	46	5.9	59
	No Information Provided		9	3613	4	44	5	56	1	11	0	0	4.2	47	2.7	33	3.4	49	4.7	47	1.3	22	4.1	41
Special Education	Yes		436	3467	278	64	158	36	54	12	21	5	3.2	36	2.5	31	2.6	37	4.0	40	1.5	25	3.8	38
	No		11445	4033	2411	21	9034	79	5754	50	2921	26	5.0	56	3.8	48	4.4	63	6.5	65	2.7	46	5.8	58
	No Information Provided		9	3613	4	44	5	56	1	11	0	0	4.2	47	2.7	33	3.4	49	4.7	47	1.3	22	4.1	41
Gifted/Talented	Participants		875	4497	68	8	807	92	684	78	485	55	6.3	70	5.1	63	5.5	79	7.8	78	3.9	64	7.4	74
	Nonparticipants		11006	3974	2621	24	8385	76	5124	47	2457	22	4.9	54	3.7	46	4.3	61	6.3	63	2.6	43	5.6	56
	No Information Provided		9	3613	4	44	5	56	1	11	0	0	4.2	47	2.7	33	3.4	49	4.7	47	1.3	22	4.1	41
At-Risk	Yes		5320	3771	1894	36	3426	64	1673	31	620	12	4.3	48	3.1	39	3.7	53	5.5	55	2.1	35	4.8	48
	No		6561	4208	795	12	5766	88	4135	63	2322	35	5.5	61	4.3	54	4.9	70	7.1	71	3.2	53	6.5	65
	No Information Provided		9	3613	4	44	5	56	1	11	0	0	4.2	47	2.7	33	3.4	49	4.7	47	1.3	22	4.1	41
Career/Technical Education	Participants		7963	3970	1967	25	5996	75	3661	46	1793	23	4.8	54	3.7	46	4.3	61	6.3	63	2.6	44	5.6	56
	Nonparticipants		3923	4098	724	18	3199	82	2147	55	1149	29	5.3	58	4.0	50	4.6	65	6.6	66	2.9	48	6.1	61
	No Information Provided		4	---	---	---	---	---	---	---	---	---	---	---	---	---	---	---	---	---	---	---	---	---



STATEWIDE

STATE OF TEXAS ASSESSMENTS OF ACADEMIC READINESS

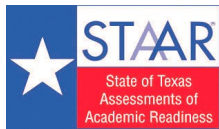
Summary Report

ALGEBRA II

Retested Students

Report Date: SUMMER 2018
Date of Testing: SPRING 2018

Administration Summary			Number of Students Tested	Average Scale Score	Results for Each Reporting Category																	
					1		2		3		4		5		6							
Number		Percent			Number and Algebraic Methods	Describing and Graphing Functions and Their Inverses	Writing and Solving Systems of Equations and Inequalities	Quadratic and Square Root Functions, Equations, and Inequalities	Exponential and Logarithmic Functions and Equations	Other Functions, Equations, and Inequalities												
Students Tested		Students Not Tested																				
Absent		Other																				
Total Documents Submitted																						
Legend					Number of Items Tested																	
--- = No Data Reported For Fewer Than Five Students					9		8		7		10		6		10							
					Avg. # of Items / % Correct																	
					#	%	#	%	#	%	#	%	#	%	#	%	#	%				
All Students	75	3552	36	48	39	52	13	17	3	4	3.8	42	2.7	34	3.1	44	4.5	45	1.6	27	3.8	38
Male	48	3513	25	52	23	48	7	15	2	4	3.8	42	2.7	34	3.0	42	4.2	42	1.5	26	3.6	36
Female	27	3623	11	41	16	59	6	22	1	4	3.9	43	2.7	34	3.3	47	4.9	49	1.8	30	4.2	42
No Information Provided	0	---	---	---	---	---	---	---	---	---	---	---	---	---	---	---	---	---	---	---	---	---
Hispanic/Latino	57	3623	24	42	33	58	13	23	3	5	4.1	45	2.9	36	3.2	46	4.8	48	1.8	31	4.2	42
American Indian or Alaska Native	0	---	---	---	---	---	---	---	---	---	---	---	---	---	---	---	---	---	---	---	---	---
Asian	0	---	---	---	---	---	---	---	---	---	---	---	---	---	---	---	---	---	---	---	---	---
Black or African American	13	3281	10	77	3	23	0	0	0	0	2.6	29	2.2	28	2.6	37	3.2	32	0.8	13	2.5	25
Native Hawaiian or Other Pacific Islander	0	---	---	---	---	---	---	---	---	---	---	---	---	---	---	---	---	---	---	---	---	---
White	4	---	---	---	---	---	---	---	---	---	---	---	---	---	---	---	---	---	---	---	---	---
Two or More Races	1	---	---	---	---	---	---	---	---	---	---	---	---	---	---	---	---	---	---	---	---	---
No Information Provided	0	---	---	---	---	---	---	---	---	---	---	---	---	---	---	---	---	---	---	---	---	---
Economically Disadvantaged	Yes	60	28	47	32	53	11	18	2	3	3.9	44	2.7	34	3.1	44	4.4	44	1.6	27	3.9	39
	No	15	8	53	7	47	2	13	1	7	3.3	37	2.5	32	3.1	45	4.9	49	1.7	28	3.5	35
	No Information Provided	0	---	---	---	---	---	---	---	---	---	---	---	---	---	---	---	---	---	---	---	---
Title I, Part A	Participants	67	32	48	35	52	13	19	3	4	3.8	42	2.8	35	3.1	44	4.4	44	1.7	28	3.9	39
	Nonparticipants	8	4	50	4	50	0	0	0	0	3.6	40	2.1	27	2.9	41	4.8	48	1.5	25	3.0	30
	No Information Provided	0	---	---	---	---	---	---	---	---	---	---	---	---	---	---	---	---	---	---	---	---
Migrant	Yes	2	---	---	---	---	---	---	---	---	---	---	---	---	---	---	---	---	---	---	---	---
	No	73	35	48	38	52	13	18	3	4	3.8	42	2.7	34	3.1	44	4.5	45	1.6	27	3.8	38
	No Information Provided	0	---	---	---	---	---	---	---	---	---	---	---	---	---	---	---	---	---	---	---	---
Limited English Proficient	Current LEP	12	5	42	7	58	2	17	0	0	4.0	44	2.3	29	3.3	48	4.7	47	1.6	26	4.0	40
	Non-LEP (Monitored 1st Year)	2	---	---	---	---	---	---	---	---	---	---	---	---	---	---	---	---	---	---	---	---
	Non-LEP (Monitored 2nd Year)	2	---	---	---	---	---	---	---	---	---	---	---	---	---	---	---	---	---	---	---	---
	Other Non-LEP	59	30	51	29	49	10	17	3	5	3.7	42	2.7	33	3.0	43	4.4	44	1.6	27	3.7	37
	No Information Provided	0	---	---	---	---	---	---	---	---	---	---	---	---	---	---	---	---	---	---	---	---
Bilingual	Participants	0	---	---	---	---	---	---	---	---	---	---	---	---	---	---	---	---	---	---	---	---
	Nonparticipants	75	36	48	39	52	13	17	3	4	3.8	42	2.7	34	3.1	44	4.5	45	1.6	27	3.8	38
	No Information Provided	0	---	---	---	---	---	---	---	---	---	---	---	---	---	---	---	---	---	---	---	---
ESL	Participants	12	5	42	7	58	2	17	0	0	4.0	44	2.3	29	3.3	48	4.7	47	1.6	26	4.0	40
	Nonparticipants	63	31	49	32	51	11	17	3	5	3.8	42	2.8	35	3.0	43	4.4	44	1.7	28	3.8	38
	No Information Provided	0	---	---	---	---	---	---	---	---	---	---	---	---	---	---	---	---	---	---	---	---
Special Education	Yes	4	---	---	---	---	---	---	---	---	---	---	---	---	---	---	---	---	---	---	---	---
	No	71	32	45	39	55	13	18	3	4	3.8	43	2.8	35	3.2	45	4.6	46	1.7	28	3.9	39
	No Information Provided	0	---	---	---	---	---	---	---	---	---	---	---	---	---	---	---	---	---	---	---	---
Gifted/Talented	Participants	1	---	---	---	---	---	---	---	---	---	---	---	---	---	---	---	---	---	---	---	---
	Nonparticipants	74	35	47	39	53	13	18	3	4	3.8	42	2.7	34	3.1	44	4.5	45	1.6	27	3.9	39
	No Information Provided	0	---	---	---	---	---	---	---	---	---	---	---	---	---	---	---	---	---	---	---	---
At-Risk	Yes	44	23	52	21	48	7	16	1	2	3.5	39	2.7	34	2.9	41	4.3	43	1.3	22	3.9	39
	No	31	13	42	18	58	6	19	2	6	4.2	47	2.6	33	3.3	47	4.7	47	2.1	34	3.7	37
	No Information Provided	0	---	---	---	---	---	---	---	---	---	---	---	---	---	---	---	---	---	---	---	---
Career/Technical Education	Participants	37	21	57	16	43	4	11	1	3	3.5	39	2.5	31	2.9	42	4.5	45	1.6	27	3.4	34
	Nonparticipants	38	15	39	23	61	9	24	2	5	4.1	46	2.9	37	3.2	45	4.5	45	1.7	28	4.2	42
	No Information Provided	0	---	---	---	---	---	---	---	---	---	---	---	---	---	---	---	---	---	---	---	---



STATE OF TEXAS ASSESSMENTS OF ACADEMIC READINESS

Summary Report

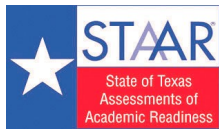
ALGEBRA II

All Students

STATEWIDE PRELIMINARY

Report Date: SUMMER 2019
Date of Testing: SPRING 2019

Administration Summary			Number of Students Tested	Average Scale Score	Did Not Meet	Approaches	Meets	Masters	Results for Each Reporting Category														
									1		2		3		4		5		6				
Number	Percent	Number and Algebraic Methods							Describing and Graphing Functions and Their Inverses	Writing and Solving Systems of Equations and Inequalities	Quadratic and Square Root Functions, Equations, and Inequalities	Exponential and Logarithmic Functions and Equations	Other Functions, Equations, and Inequalities										
Students Tested	8490													99									
Students Not Tested																							
Absent	97													1									
Other	7													0									
Total Documents Submitted	8594	100																					
Legend			--- = No Data Reported For Fewer Than Five Students																				
Number of Items Tested																							
9		8		7		10		6		10													
Avg. # of Items / % Correct																							
#	%	#	%	#	%	#	%	#	%	#	%	#	%										
All Students	8490	3981	1897	22	6593	78	3989	47	1852	22	5.0	56	3.6	45	4.2	60	6.4	64	2.6	44	5.8	58	
Male	4116	3945	1077	26	3039	74	1838	45	871	21	4.9	54	3.6	45	4.1	58	6.2	62	2.6	43	5.5	55	
Female	4373	4015	820	19	3553	81	2151	49	981	22	5.1	57	3.6	45	4.3	61	6.5	65	2.6	44	6.0	60	
No Information Provided	1	---	---	---	---	---	---	---	---	---	---	---	---	---	---	---	---	---	---	---	---	---	
Hispanic/Latino	6142	3968	1380	22	4762	78	2815	46	1278	21	4.9	55	3.6	45	4.1	59	6.3	63	2.6	43	5.7	57	
American Indian or Alaska Native	17	4107	2	12	15	88	11	65	6	35	6.1	67	3.6	45	4.5	65	7.4	74	2.6	43	6.3	63	
Asian	108	4298	14	13	94	87	72	67	46	43	5.7	63	4.4	55	4.9	70	7.2	72	3.6	60	6.9	69	
Black or African American	1187	3834	367	31	820	69	449	38	159	13	4.7	52	3.1	39	3.8	55	5.7	57	2.2	37	5.3	53	
Native Hawaiian or Other Pacific Islander	10	3993	1	10	9	90	4	40	2	20	5.9	66	2.9	36	4.1	59	6.6	66	3.0	50	5.5	55	
White	919	4202	115	13	804	87	573	62	323	35	5.6	62	4.2	52	4.7	67	7.3	73	3.2	54	6.5	65	
Two or More Races	104	4132	18	17	86	83	63	61	36	35	5.1	57	4.3	54	4.6	66	7.0	70	3.0	51	6.4	64	
No Information Provided	3	---	---	---	---	---	---	---	---	---	---	---	---	---	---	---	---	---	---	---	---	---	
Economically Disadvantaged	Yes	5830	3921	1473	25	4357	75	2488	43	1076	18	4.8	54	3.4	43	4.0	58	6.1	61	2.5	41	5.5	55
	No	2655	4113	422	16	2233	84	1499	56	774	29	5.3	59	4.0	49	4.5	64	6.9	69	3.0	50	6.3	63
	No Information Provided	5	3833	2	40	3	60	2	40	2	40	4.8	53	3.0	38	3.8	54	5.0	50	3.0	50	4.8	48
Title I, Part A	Participants	6967	3934	1698	24	5269	76	3034	44	1335	19	4.9	54	3.5	43	4.1	58	6.1	61	2.5	41	5.6	56
	Nonparticipants	1519	4195	198	13	1321	87	953	63	515	34	5.5	62	4.2	52	4.6	65	7.3	73	3.2	54	6.5	65
	No Information Provided	4	---	---	---	---	---	---	---	---	---	---	---	---	---	---	---	---	---	---	---	---	---
Migrant	Yes	33	3907	10	30	23	70	15	45	7	21	4.9	54	3.2	40	4.1	59	6.1	61	2.4	40	5.6	56
	No	8453	3981	1886	22	6567	78	3972	47	1843	22	5.0	56	3.6	45	4.2	60	6.4	64	2.6	44	5.8	58
	No Information Provided	4	---	---	---	---	---	---	---	---	---	---	---	---	---	---	---	---	---	---	---	---	---
Limited English Proficient	Current LEP	941	3667	400	43	541	57	220	23	61	6	4.0	45	2.9	36	3.1	45	5.0	50	1.9	32	4.5	45
	Non-LEP (Monitored 1st Year)	61	3816	14	23	47	77	20	33	4	7	4.4	49	3.2	40	3.7	52	6.1	61	2.1	35	5.1	51
	Non-LEP (Monitored 2nd Year)	178	3936	37	21	141	79	70	39	33	19	4.9	54	3.4	42	4.1	59	6.1	61	2.7	45	5.6	56
	Non-LEP (Monitored 3rd Year)	289	3957	55	19	234	81	132	46	59	20	5.0	56	3.6	45	4.2	60	6.3	63	2.6	43	5.6	56
	Non-LEP (Monitored 4th Year)	165	4041	20	12	145	88	90	55	39	24	5.2	58	3.8	48	4.5	64	6.6	66	2.7	45	6.1	61
	Other Non-LEP	6852	4026	1370	20	5482	80	3455	50	1654	24	5.1	57	3.7	46	4.3	62	6.5	65	2.7	45	5.9	59
	No Information Provided	4	---	---	---	---	---	---	---	---	---	---	---	---	---	---	---	---	---	---	---	---	---
Bilingual	Participants	0	---	---	---	---	---	---	---	---	---	---	---	---	---	---	---	---	---	---	---	---	---
	Nonparticipants	8486	3981	1896	22	6590	78	3987	47	1850	22	5.0	56	3.6	45	4.2	60	6.4	64	2.6	44	5.8	58
	No Information Provided	4	---	---	---	---	---	---	---	---	---	---	---	---	---	---	---	---	---	---	---	---	---
ESL	Participants	937	3662	399	43	538	57	212	23	59	6	4.0	45	2.9	36	3.1	44	5.0	50	1.9	32	4.5	45
	Nonparticipants	7549	4021	1497	20	6052	80	3775	50	1791	24	5.1	57	3.7	46	4.3	61	6.5	65	2.7	45	5.9	59
	No Information Provided	4	---	---	---	---	---	---	---	---	---	---	---	---	---	---	---	---	---	---	---	---	---
Special Education	Yes	346	3437	232	67	114	33	35	10	5	1	3.3	36	2.4	30	2.5	36	3.9	39	1.4	23	3.6	36
	No	8140	4004	1664	20	6476	80	3952	49	1845	23	5.1	56	3.6	46	4.2	61	6.5	65	2.7	45	5.9	59
	No Information Provided	4	---	---	---	---	---	---	---	---	---	---	---	---	---	---	---	---	---	---	---	---	---
Gifted/Talented	Participants	580	4595	23	4	557	96	497	86	368	63	6.7	74	5.2	66	5.7	82	8.2	82	4.1	68	7.8	78
	Nonparticipants	7906	3936	1873	24	6033	76	3490	44	1482	19	4.9	54	3.5	43	4.1	58	6.2	62	2.5	42	5.6	56
	No Information Provided	4	---	---	---	---	---	---	---	---	---	---	---	---	---	---	---	---	---	---	---	---	---
At-Risk	Yes	3557	3734	1291	36	2266	64	1001	28	295	8	4.3	47	3.0	37	3.5	50	5.4	54	2.0	34	4.8	48
	No	4929	4159	605	12	4324	88	2986	61	1555	32	5.5	61	4.1	51	4.6	66	7.1	71	3.1	51	6.5	65
	No Information Provided	4	---	---	---	---	---	---	---	---	---	---	---	---	---	---	---	---	---	---	---	---	---
Career/Technical Education	Participants	6224	3994	1317	21	4907	79	3021	49	1394	22	5.0	56	3.6	45	4.2	60	6.5	65	2.6	44	5.8	58
	Nonparticipants	2265	3944	580	26	1685	74	967	43	457	20	4.8	54	3.6	45	4.0	57	5.9	59	2.6	44	5.6	56
	No Information Provided	1	---	---	---	---	---	---	---	---	---	---	---	---	---	---	---	---	---	---	---	---	---



STATE OF TEXAS ASSESSMENTS OF ACADEMIC READINESS

Summary Report

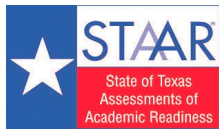
ALGEBRA II

First-Time Tested Students

STATEWIDE PRELIMINARY

Report Date: SUMMER 2019
Date of Testing: SPRING 2019

Administration Summary			Number of Students Tested	Average Scale Score	Did Not Meet	Approaches		Meets		Masters		Results for Each Reporting Category												
Number	Percent	1										2		3		4		5		6				
Students Tested	8437	99										Number and Algebraic Methods	Describing and Graphing Functions and Their Inverses	Writing and Solving Systems of Equations and Inequalities	Quadratic and Square Root Functions, Equations, and Inequalities	Exponential and Logarithmic Functions and Equations	Other Functions, Equations, and Inequalities							
Students Not Tested																								
Absent	94	1																						
Other	7	0																						
Total Documents Submitted	8538	100										Number of Items Tested												
Legend												9		8		7		10		6		10		
--- = No Data Reported For Fewer Than Five Students												Avg. # of Items / % Correct												
												#	%	#	%	#	%	#	%	#	%	#	%	#
All Students			8437	3984	1869	22	6568	78	3987	47	1852	22	5.0	56	3.6	45	4.2	60	6.4	64	2.6	44	5.8	58
Male			4088	3949	1059	26	3029	74	1837	45	871	21	4.9	54	3.6	45	4.1	58	6.2	62	2.6	44	5.5	55
Female			4348	4017	810	19	3538	81	2150	49	981	23	5.1	57	3.6	45	4.3	61	6.6	66	2.7	44	6.0	60
No Information Provided			1	---	---	---	---	---	---	---	---	---	---	---	---	---	---	---	---	---	---	---	---	---
Hispanic/Latino			6094	3971	1355	22	4739	78	2813	46	1278	21	5.0	55	3.6	45	4.1	59	6.3	63	2.6	43	5.7	57
American Indian or Alaska Native			17	4107	2	12	15	88	11	65	6	35	6.1	67	3.6	45	4.5	65	7.4	74	2.6	43	6.3	63
Asian			108	4298	14	13	94	87	72	67	46	43	5.7	63	4.4	55	4.9	70	7.2	72	3.6	60	6.9	69
Black or African American			1183	3835	364	31	819	69	449	38	159	13	4.7	52	3.1	39	3.8	55	5.7	57	2.2	37	5.3	53
Native Hawaiian or Other Pacific Islander			10	3993	1	10	9	90	4	40	2	20	5.9	66	2.9	36	4.1	59	6.6	66	3.0	50	5.5	55
White			918	4202	115	13	803	87	573	62	323	35	5.6	62	4.2	52	4.7	67	7.3	73	3.2	54	6.5	65
Two or More Races			104	4132	18	17	86	83	63	61	36	35	5.1	57	4.3	54	4.6	66	7.0	70	3.0	51	6.4	64
No Information Provided			3	---	---	---	---	---	---	---	---	---	---	---	---	---	---	---	---	---	---	---	---	---
Economically Disadvantaged	Yes		5789	3924	1449	25	4340	75	2487	43	1076	19	4.9	54	3.4	43	4.0	58	6.1	61	2.5	41	5.5	55
	No		2643	4115	418	16	2225	84	1498	57	774	29	5.3	59	4.0	49	4.5	64	6.9	69	3.0	50	6.3	63
	No Information Provided		5	3833	2	40	3	60	2	40	2	40	4.8	53	3.0	38	3.8	54	5.0	50	3.0	50	4.8	48
Title I, Part A	Participants		6914	3938	1670	24	5244	76	3032	44	1335	19	4.9	54	3.5	44	4.1	58	6.2	62	2.5	42	5.6	56
	Nonparticipants		1519	4195	198	13	1321	87	953	63	515	34	5.5	62	4.2	52	4.6	65	7.3	73	3.2	54	6.5	65
	No Information Provided		4	---	---	---	---	---	---	---	---	---	---	---	---	---	---	---	---	---	---	---	---	---
Migrant	Yes		33	3907	10	30	23	70	15	45	7	21	4.9	54	3.2	40	4.1	59	6.1	61	2.4	40	5.6	56
	No		8400	3984	1858	22	6542	78	3970	47	1843	22	5.0	56	3.6	45	4.2	60	6.4	64	2.6	44	5.8	58
	No Information Provided		4	---	---	---	---	---	---	---	---	---	---	---	---	---	---	---	---	---	---	---	---	---
Limited English Proficient	Current LEP		926	3668	392	42	534	58	220	24	61	7	4.0	45	2.9	36	3.1	45	5.0	50	1.9	32	4.6	46
	Non-LEP (Monitored 1st Year)		61	3816	14	23	47	77	20	33	4	7	4.4	49	3.2	40	3.7	52	6.1	61	2.1	35	5.1	51
	Non-LEP (Monitored 2nd Year)		177	3937	37	21	140	79	70	40	33	19	4.9	54	3.4	42	4.1	59	6.2	62	2.7	45	5.6	56
	Non-LEP (Monitored 3rd Year)		288	3957	55	19	233	81	132	46	59	20	5.0	56	3.6	45	4.2	60	6.3	63	2.6	43	5.6	56
	Non-LEP (Monitored 4th Year)		163	4044	20	12	143	88	90	55	39	24	5.2	58	3.8	48	4.5	64	6.6	66	2.7	45	6.2	62
	Other Non-LEP		6818	4029	1350	20	5468	80	3453	51	1654	24	5.1	57	3.7	46	4.3	62	6.6	66	2.7	46	6.0	60
	No Information Provided		4	---	---	---	---	---	---	---	---	---	---	---	---	---	---	---	---	---	---	---	---	---
Bilingual	Participants		0	---	---	---	---	---	---	---	---	---	---	---	---	---	---	---	---	---	---	---	---	---
	Nonparticipants		8433	3984	1868	22	6565	78	3985	47	1850	22	5.0	56	3.6	45	4.2	60	6.4	64	2.6	44	5.8	58
	No Information Provided		4	---	---	---	---	---	---	---	---	---	---	---	---	---	---	---	---	---	---	---	---	---
ESL	Participants		922	3663	391	42	531	58	212	23	59	6	4.0	45	2.9	36	3.1	45	5.0	50	1.9	32	4.5	45
	Nonparticipants		7511	4023	1477	20	6034	80	3773	50	1791	24	5.1	57	3.7	46	4.3	62	6.5	65	2.7	45	5.9	59
	No Information Provided		4	---	---	---	---	---	---	---	---	---	---	---	---	---	---	---	---	---	---	---	---	---
Special Education	Yes		344	3437	230	67	114	33	35	10	5	1	3.3	36	2.4	30	2.5	36	3.9	39	1.4	23	3.6	36
	No		8089	4007	1638	20	6451	80	3950	49	1845	23	5.1	56	3.7	46	4.2	61	6.5	65	2.7	45	5.9	59
	No Information Provided		4	---	---	---	---	---	---	---	---	---	---	---	---	---	---	---	---	---	---	---	---	---
Gifted/Talented	Participants		580	4595	23	4	557	96	497	86	368	63	6.7	74	5.2	66	5.7	82	8.2	82	4.1	68	7.8	78
	Nonparticipants		7853	3939	1845	23	6008	77	3488	44	1482	19	4.9	54	3.5	44	4.1	58	6.2	62	2.5	42	5.6	56
	No Information Provided		4	---	---	---	---	---	---	---	---	---	---	---	---	---	---	---	---	---	---	---	---	---
At-Risk	Yes		3522	3736	1275	36	2247	64	1000	28	295	8	4.3	47	3.0	37	3.5	50	5.4	54	2.0	34	4.8	48
	No		4911	4162	593	12	4318	88	2985	61	1555	32	5.5	61	4.1	51	4.7	66	7.1	71	3.1	51	6.5	65
	No Information Provided		4	---	---	---	---	---	---	---	---	---	---	---	---	---	---	---	---	---	---	---	---	---
Career/Technical Education	Participants		6205	3996	1302	21	4903	79	3021	49	1394	22	5.1	56	3.6	45	4.2	60	6.5	65	2.6	44	5.8	58
	Nonparticipants		2231	3950	567	25	1664	75	965	43	457	20	4.9	54	3.6	45	4.0	57	6.0	60	2.6	44	5.6	56
	No Information Provided		1	---	---	---	---	---	---	---	---	---	---	---	---	---	---	---	---	---	---	---	---	---



STATE OF TEXAS ASSESSMENTS OF ACADEMIC READINESS

Summary Report

ALGEBRA II

Retested Students

STATEWIDE PRELIMINARY

Report Date: SUMMER 2019
Date of Testing: SPRING 2019

Administration Summary			Number of Students Tested	Average Scale Score	Did Not Meet		Approaches		Meets		Masters		Results for Each Reporting Category											
													1		2		3		4		5		6	
Number	Percent	Number and Algebraic Methods											Describing and Graphing Functions and Their Inverses	Writing and Solving Systems of Equations and Inequalities	Quadratic and Square Root Functions, Equations, and Inequalities	Exponential and Logarithmic Functions and Equations	Other Functions, Equations, and Inequalities							
Students Tested	53																	95						
Students Not Tested																								
Absent	3																	5						
Other	0	0																						
Total Documents Submitted	56	100																						
Legend			--- = No Data Reported For Fewer Than Five Students									Number of Items Tested												
9		8										7		10		6		10						
Avg. # of Items / % Correct																								
#	%	#										%	#	%	#	%	#	%	#	%				
All Students	53	3510	28	53	25	47	2	4	0	0	3.5	39	2.1	26	2.8	40	4.3	43	1.7	29	3.8	38		
Male	28	3449	18	64	10	36	1	4	0	0	3.2	36	2.0	25	2.7	38	4.2	42	1.6	27	3.4	34		
Female	25	3578	10	40	15	60	1	4	0	0	3.8	43	2.2	28	2.9	41	4.4	44	1.8	31	4.4	44		
No Information Provided	0	---	---	---	---	---	---	---	---	---	---	---	---	---	---	---	---	---	---	---	---	---		
Hispanic/Latino	48	3523	25	52	23	48	2	4	0	0	3.7	41	2.0	25	2.9	42	4.4	44	1.8	30	3.8	38		
American Indian or Alaska Native	0	---	---	---	---	---	---	---	---	---	---	---	---	---	---	---	---	---	---	---	---	---		
Asian	0	---	---	---	---	---	---	---	---	---	---	---	---	---	---	---	---	---	---	---	---	---		
Black or African American	4	---	---	---	---	---	---	---	---	---	---	---	---	---	---	---	---	---	---	---	---	---		
Native Hawaiian or Other Pacific Islander	0	---	---	---	---	---	---	---	---	---	---	---	---	---	---	---	---	---	---	---	---	---		
White	1	---	---	---	---	---	---	---	---	---	---	---	---	---	---	---	---	---	---	---	---	---		
Two or More Races	0	---	---	---	---	---	---	---	---	---	---	---	---	---	---	---	---	---	---	---	---	---		
No Information Provided	0	---	---	---	---	---	---	---	---	---	---	---	---	---	---	---	---	---	---	---	---	---		
Economically Disadvantaged	Yes	41	3487	24	59	17	41	1	2	0	0	3.6	40	2.0	25	2.6	38	4.3	43	1.6	26	3.7	37	
	No	12	3588	4	33	8	67	1	8	0	0	3.3	37	2.6	32	3.3	46	4.3	43	2.3	38	4.3	43	
	No Information Provided	0	---	---	---	---	---	---	---	---	---	---	---	---	---	---	---	---	---	---	---	---	---	
Title I, Part A	Participants	53	3510	28	53	25	47	2	4	0	0	3.5	39	2.1	26	2.8	40	4.3	43	1.7	29	3.8	38	
	Nonparticipants	0	---	---	---	---	---	---	---	---	---	---	---	---	---	---	---	---	---	---	---	---	---	
	No Information Provided	0	---	---	---	---	---	---	---	---	---	---	---	---	---	---	---	---	---	---	---	---	---	
Migrant	Yes	0	---	---	---	---	---	---	---	---	---	---	---	---	---	---	---	---	---	---	---	---	---	
	No	53	3510	28	53	25	47	2	4	0	0	3.5	39	2.1	26	2.8	40	4.3	43	1.7	29	3.8	38	
	No Information Provided	0	---	---	---	---	---	---	---	---	---	---	---	---	---	---	---	---	---	---	---	---	---	
Limited English Proficient	Current LEP	15	3581	8	53	7	47	0	0	0	0	4.0	44	1.9	24	2.7	39	4.7	47	2.0	33	4.2	42	
	Non-LEP (Monitored 1st Year)	0	---	---	---	---	---	---	---	---	---	---	---	---	---	---	---	---	---	---	---	---	---	
	Non-LEP (Monitored 2nd Year)	1	---	---	---	---	---	---	---	---	---	---	---	---	---	---	---	---	---	---	---	---	---	
	Non-LEP (Monitored 3rd Year)	1	---	---	---	---	---	---	---	---	---	---	---	---	---	---	---	---	---	---	---	---	---	
	Non-LEP (Monitored 4th Year)	2	---	---	---	---	---	---	---	---	---	---	---	---	---	---	---	---	---	---	---	---	---	
	Other Non-LEP	34	3444	20	59	14	41	2	6	0	0	3.2	36	2.1	26	2.6	38	4.1	41	1.5	25	3.5	35	
	No Information Provided	0	---	---	---	---	---	---	---	---	---	---	---	---	---	---	---	---	---	---	---	---	---	
Bilingual	Participants	0	---	---	---	---	---	---	---	---	---	---	---	---	---	---	---	---	---	---	---	---	---	
	Nonparticipants	53	3510	28	53	25	47	2	4	0	0	3.5	39	2.1	26	2.8	40	4.3	43	1.7	29	3.8	38	
	No Information Provided	0	---	---	---	---	---	---	---	---	---	---	---	---	---	---	---	---	---	---	---	---	---	
ESL	Participants	15	3581	8	53	7	47	0	0	0	0	4.0	44	1.9	24	2.7	39	4.7	47	2.0	33	4.2	42	
	Nonparticipants	38	3481	20	53	18	47	2	5	0	0	3.3	37	2.2	27	2.8	40	4.2	42	1.6	27	3.7	37	
	No Information Provided	0	---	---	---	---	---	---	---	---	---	---	---	---	---	---	---	---	---	---	---	---	---	
Special Education	Yes	2	---	---	---	---	---	---	---	---	---	---	---	---	---	---	---	---	---	---	---	---	---	
	No	51	3515	26	51	25	49	2	4	0	0	3.5	39	2.2	27	2.8	40	4.4	44	1.7	29	3.8	38	
	No Information Provided	0	---	---	---	---	---	---	---	---	---	---	---	---	---	---	---	---	---	---	---	---	---	
Gifted/Talented	Participants	0	---	---	---	---	---	---	---	---	---	---	---	---	---	---	---	---	---	---	---	---	---	
	Nonparticipants	53	3510	28	53	25	47	2	4	0	0	3.5	39	2.1	26	2.8	40	4.3	43	1.7	29	3.8	38	
	No Information Provided	0	---	---	---	---	---	---	---	---	---	---	---	---	---	---	---	---	---	---	---	---	---	
At-Risk	Yes	35	3558	16	46	19	54	1	3	0	0	3.6	40	2.2	28	2.9	42	4.5	45	1.8	30	4.1	41	
	No	18	3416	12	67	6	33	1	6	0	0	3.3	37	1.9	24	2.4	35	3.9	39	1.6	26	3.4	34	
	No Information Provided	0	---	---	---	---	---	---	---	---	---	---	---	---	---	---	---	---	---	---	---	---	---	
Career/Technical Education	Participants	19	3390	15	79	4	21	0	0	0	0	3.1	35	1.6	20	2.4	35	3.9	39	1.4	24	3.4	34	
	Nonparticipants	34	3577	13	38	21	62	2	6	0	0	3.7	42	2.4	30	3.0	42	4.6	46	1.9	31	4.1	41	
	No Information Provided	0	---	---	---	---	---	---	---	---	---	---	---	---	---	---	---	---	---	---	---	---	---	