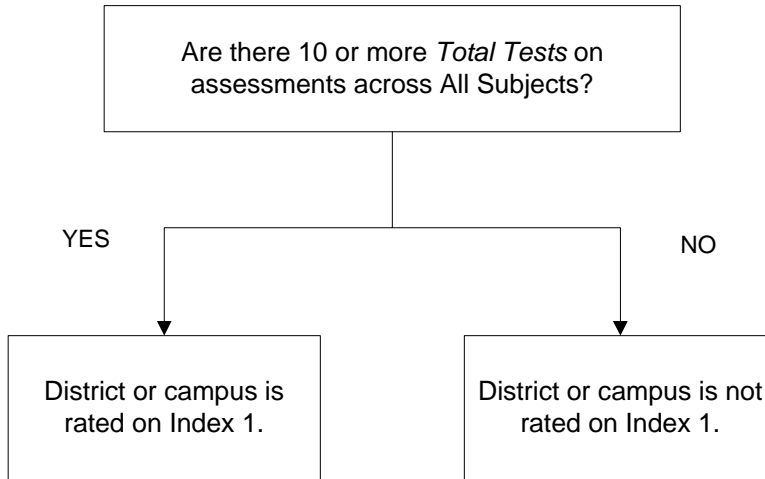


2016 Small Numbers Analysis Index 1: Student Achievement

ALL DISTRICTS AND CAMPUS TYPES

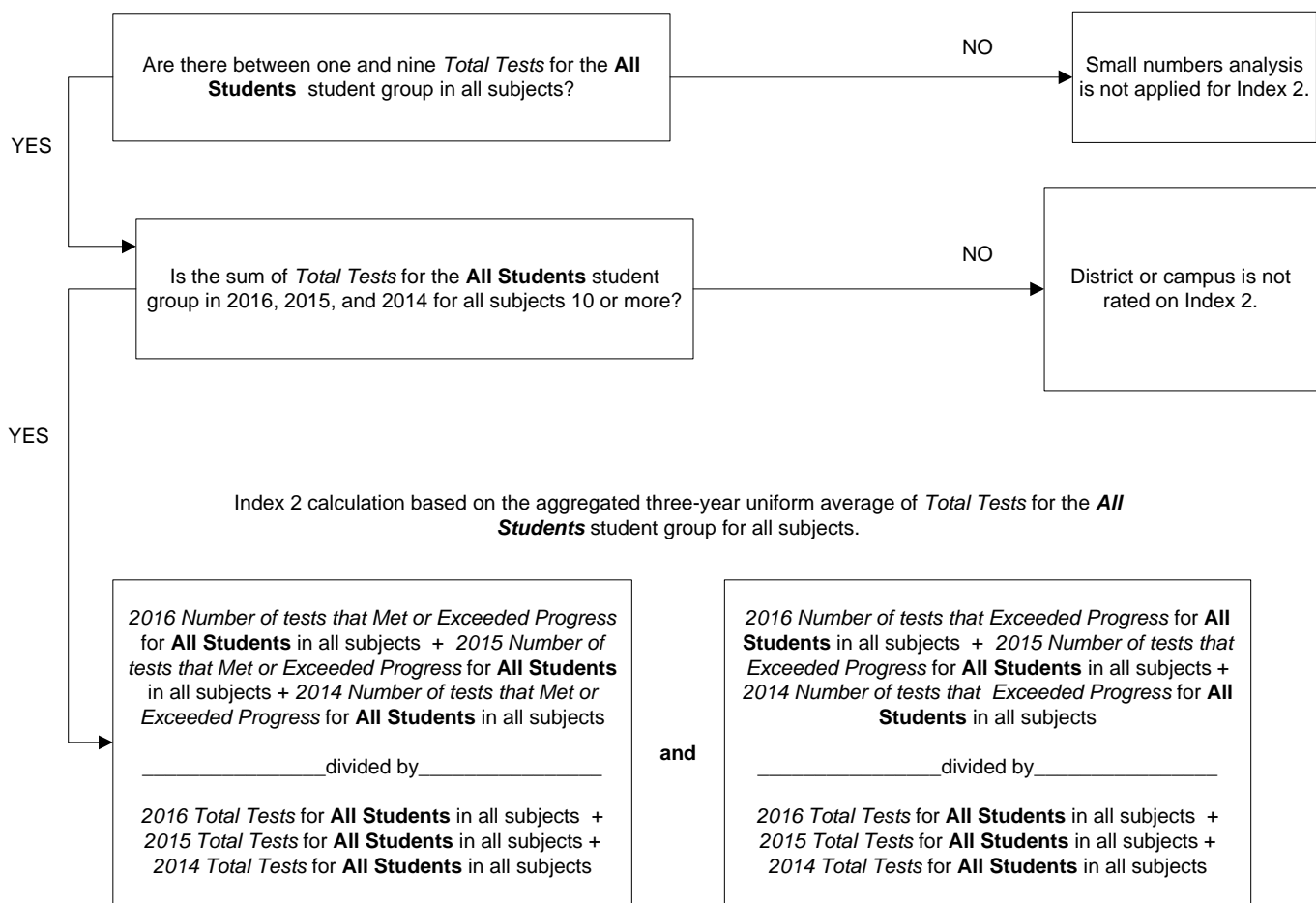
Small numbers analysis is not applied to Index 1. A district or campus with fewer than 10 total tests across all subjects will not be rated for Index 1.



2016 Small Numbers Analysis Index 2: Student Progress

ALL DISTRICTS AND CAMPUS TYPES

Small numbers analysis is applied for the **All Students** student group across the subjects of ELA/reading and mathematics if there are between one and nine *Total Tests* in 2016. There must be at least one test in order for Index 2 to be evaluated.

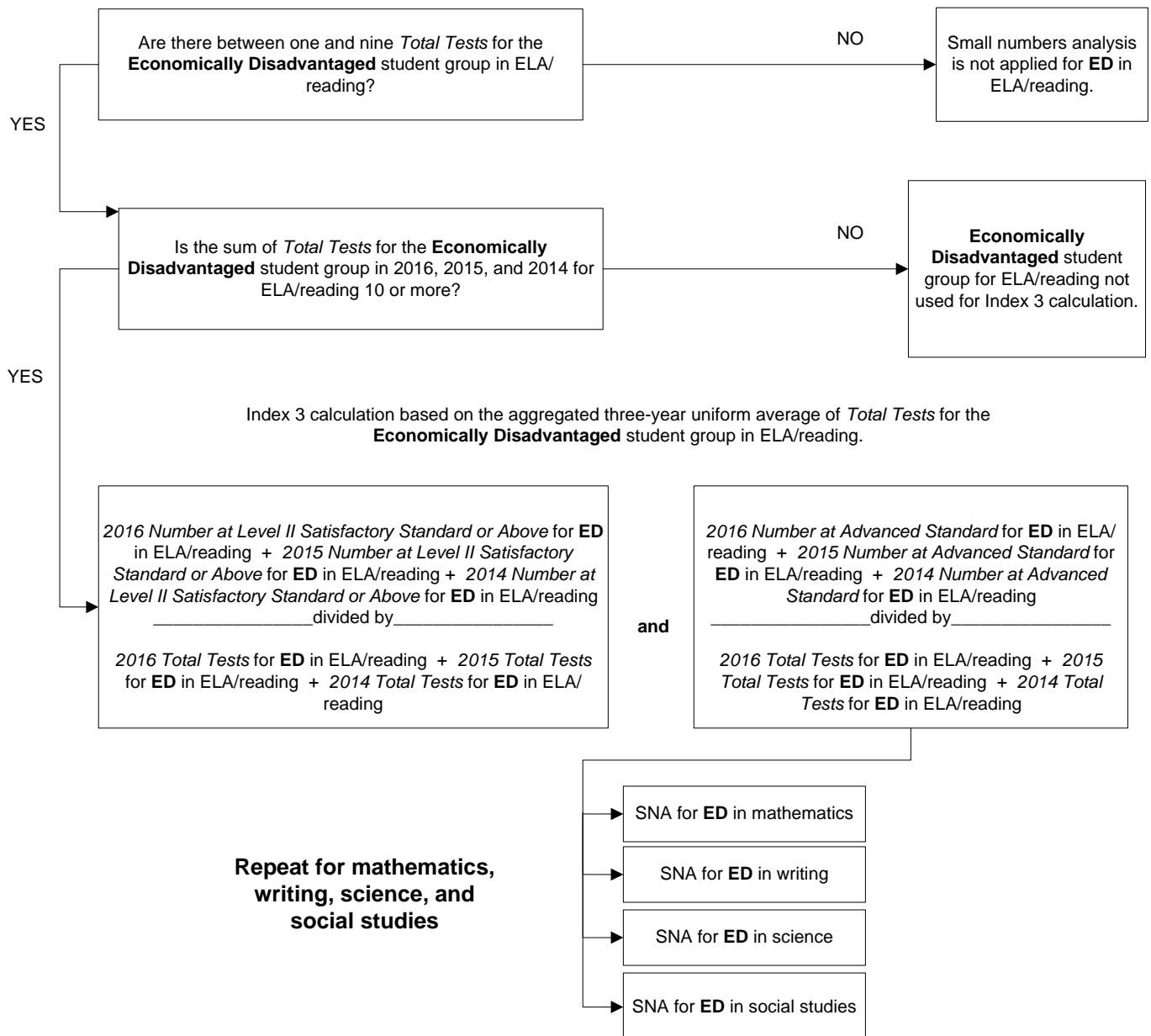


2016 Small Numbers Analysis Index 3: Closing Performance Gaps

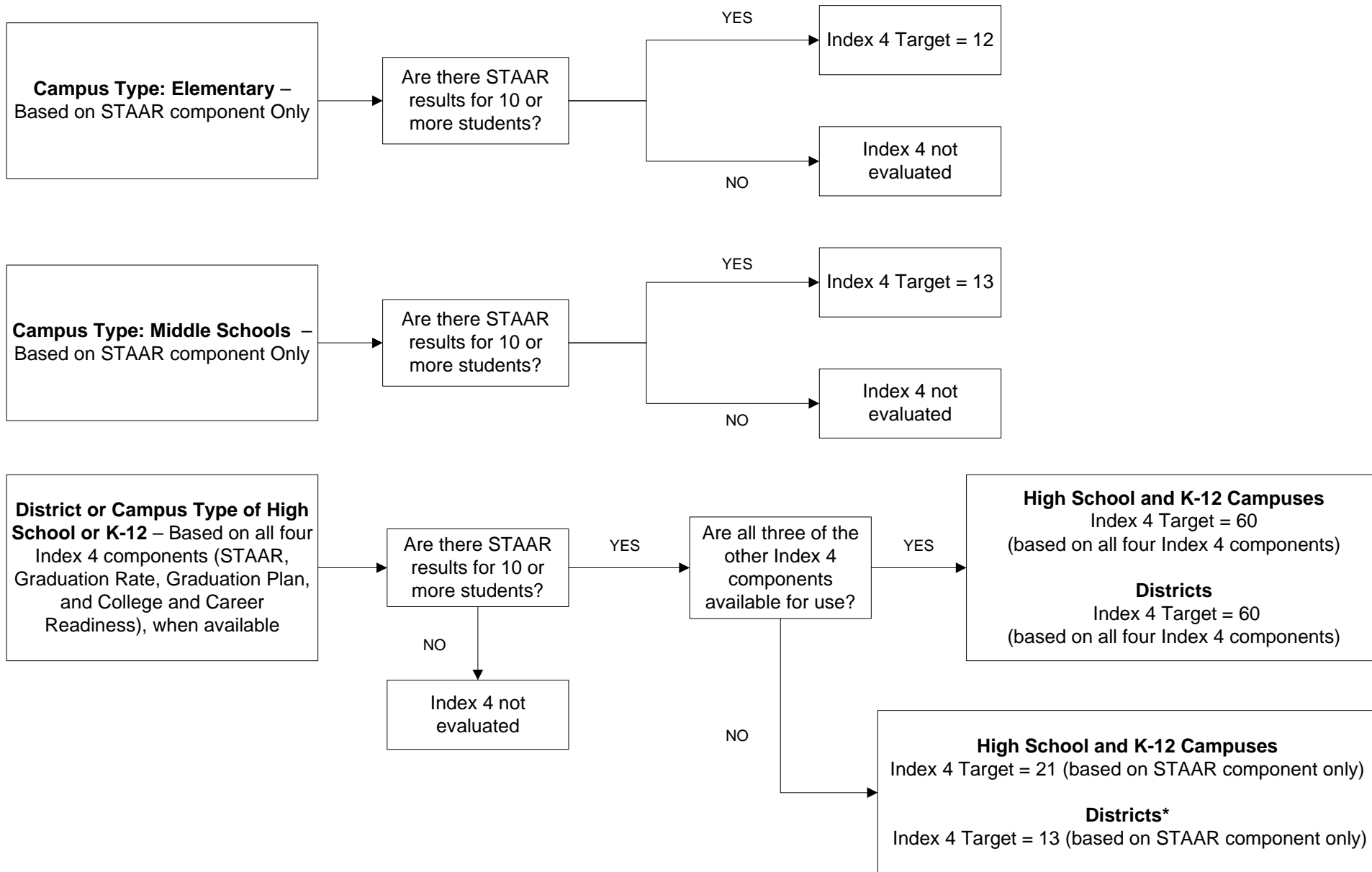
ALL DISTRICTS AND CAMPUS TYPES

Small numbers analysis is applied for the **Economically Disadvantaged (ED)** student group by subject (ELA/reading, mathematics, writing, science, and social studies) if there are between one and nine *Total Tests* in 2016. There must be at least one test in order for Index 3 to be evaluated.

ELA/Reading



Index 4 Target Determination For Non-AEA (Standard) Districts and Campuses



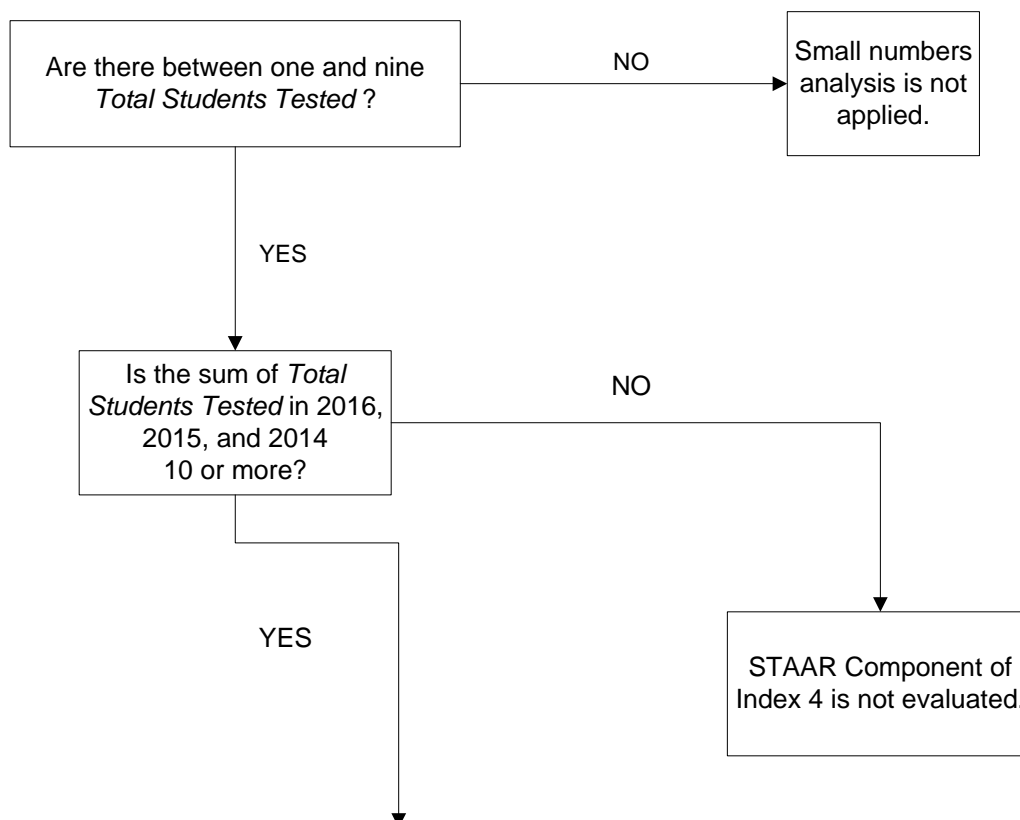
*A district or charter comprised of only one campus that shares the same 2016 performance data with that campus must meet the index target required for the campus in order to demonstrate acceptable performance.

2016 Small Numbers Analysis Index 4: Postsecondary Readiness

Part One—STAAR Component

ALL DISTRICTS AND CAMPUS TYPES

Small numbers analysis is applied if the *Total Students Tested* in 2016 is between one and nine. There must be at least one student tested in order for Index 4 STAAR component to be evaluated.



Index 4 STAAR Component calculation based on the aggregated
three-year uniform average

2016 Number of students meeting Postsecondary Readiness Standard in two or more subject areas (or one subject area if only one subject was tested) + 2015 Number of students meeting Postsecondary Readiness Standard in two or more subject areas (or one subject area if only one subject was tested) + 2014 Number of students meeting Postsecondary Readiness Standard in two or more subject areas (or one subject area if only one subject was tested)

_____ divided by _____

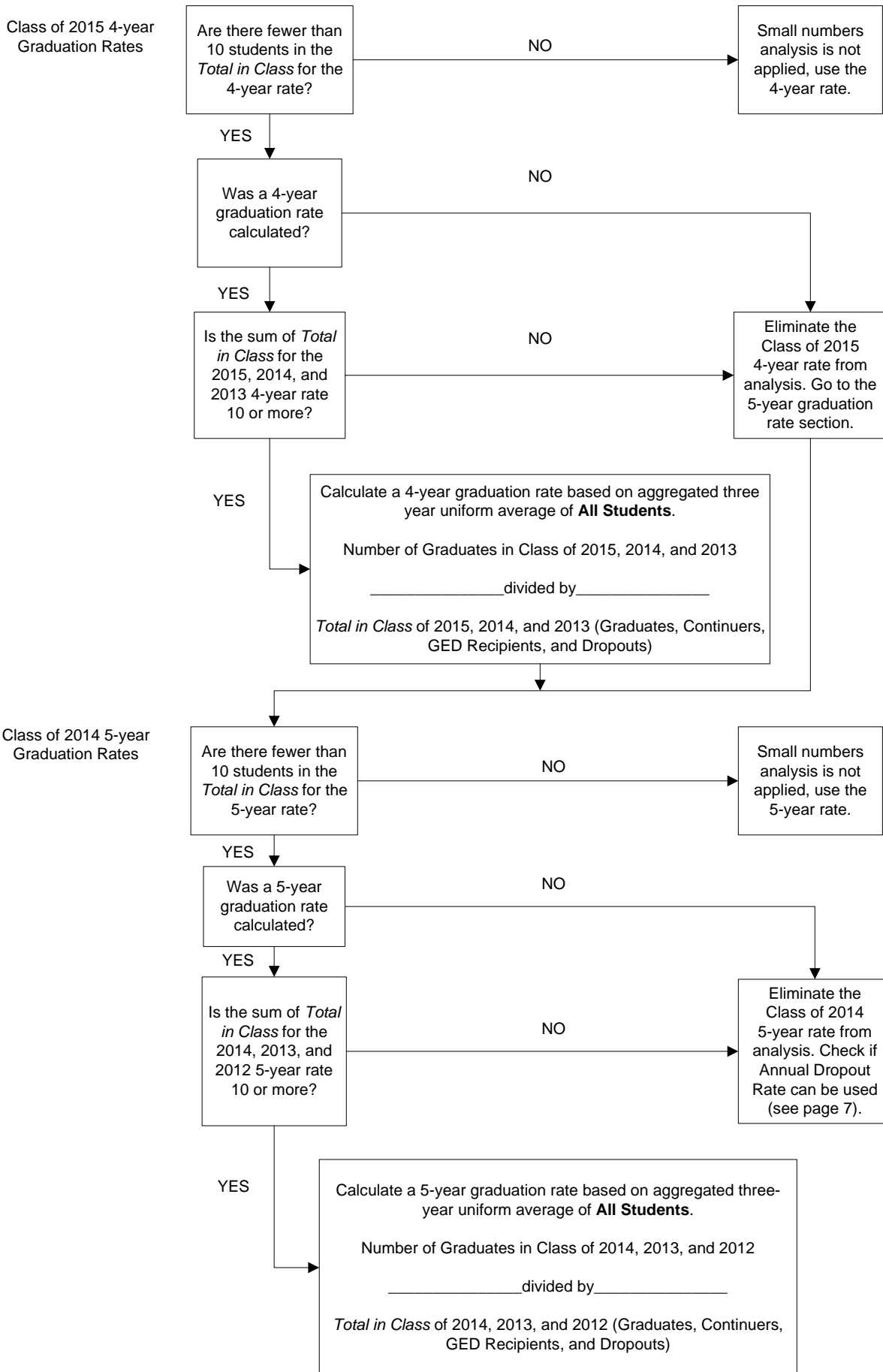
2016 Total number of students with test results in two or more subject areas (or one subject area if only one subject was tested) + 2015 Total number of students with test results in two or more subject areas (or one subject area if only one subject was tested) + 2014 Total number of students with test results in two or more subject areas (or one subject area if only one subject was tested)

2016 Small Numbers Analysis

Index 4: Postsecondary Readiness

Part Two—Graduation Rate Component STANDARD DISTRICTS AND CAMPUSES

Graduation Rate: Small numbers analysis is applied to the **All Students** student group if the *Total in Class* for the 4-year (Class of 2015) or 5-year (Class of 2014) is fewer than 10 students.



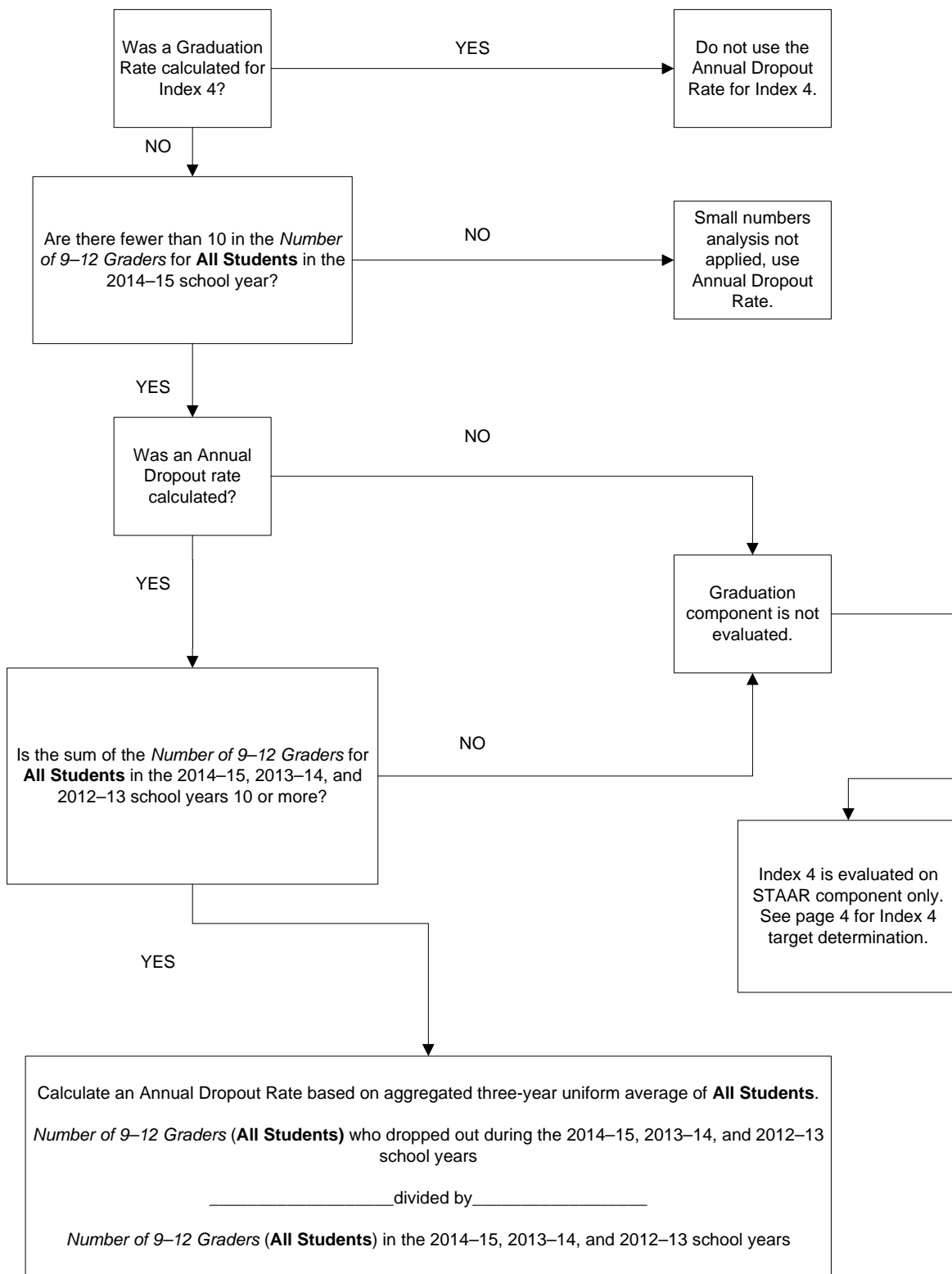
2016 Small Numbers Analysis

Index 4: Postsecondary Readiness

Part Two—Graduation Rate Component (Annual Dropouts)

ALL DISTRICTS AND CAMPUS TYPES

Annual Dropout Rate (Gr 9–12): Small numbers analysis is applied to the **All Students** student group if the *Number of 9–12 Graders* in the 2014–15 school year is fewer than 10 and **if no Graduation Rate is calculated.**

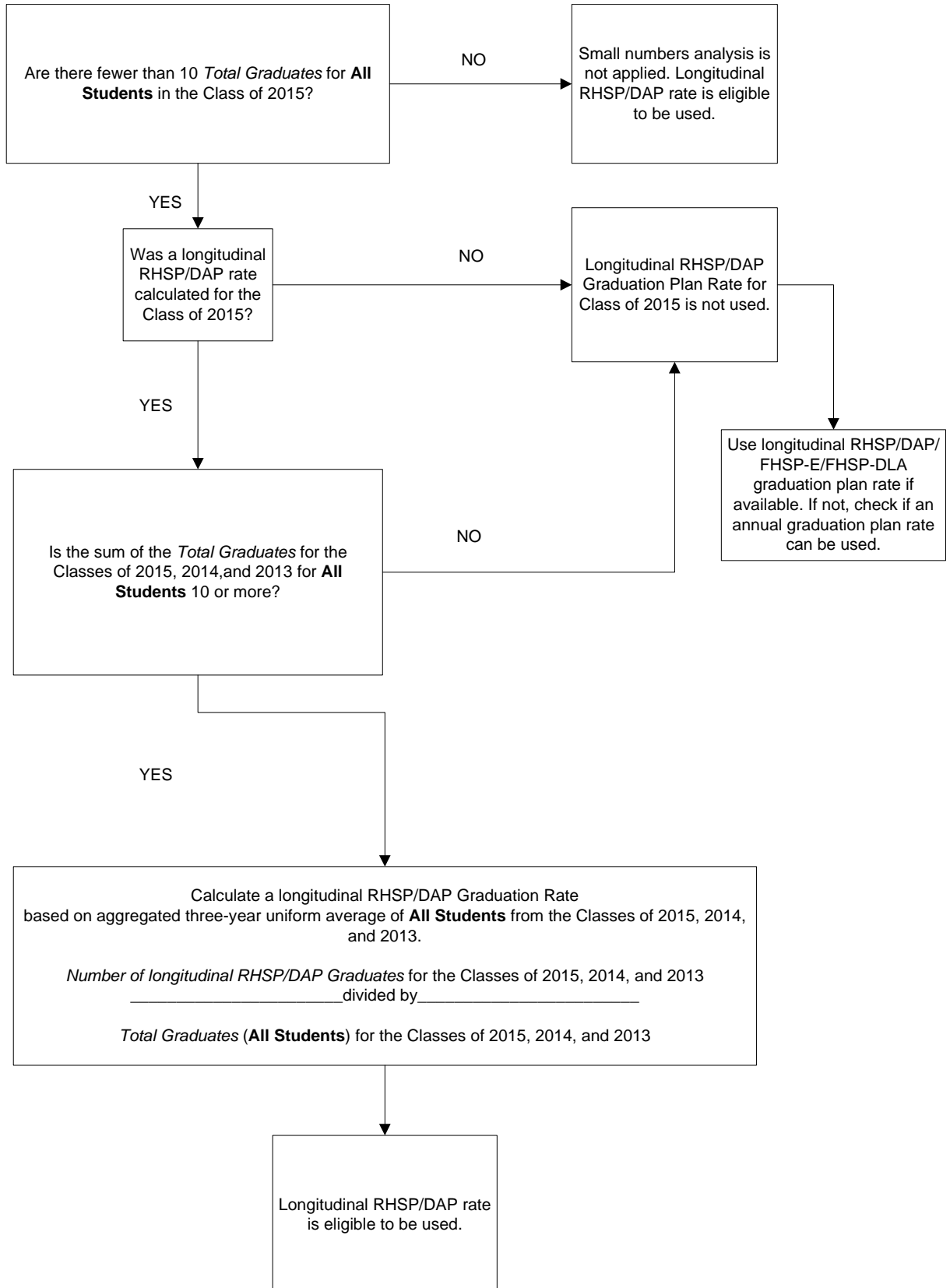


**2016 Small Numbers Analysis
Index 4: Postsecondary Readiness
Part Three—Graduation Plan Component**

STANDARD DISTRICTS AND CAMPUS TYPES

**Recommended High School Program/Distinguished Achievement Program (RHSP/DAP)
Longitudinal Rates (without Foundation High School Program graduates)**

Small numbers analysis is applied to the **All Students** student group if the *Number of Total Graduates* in the Class of 2015 is fewer than 10.

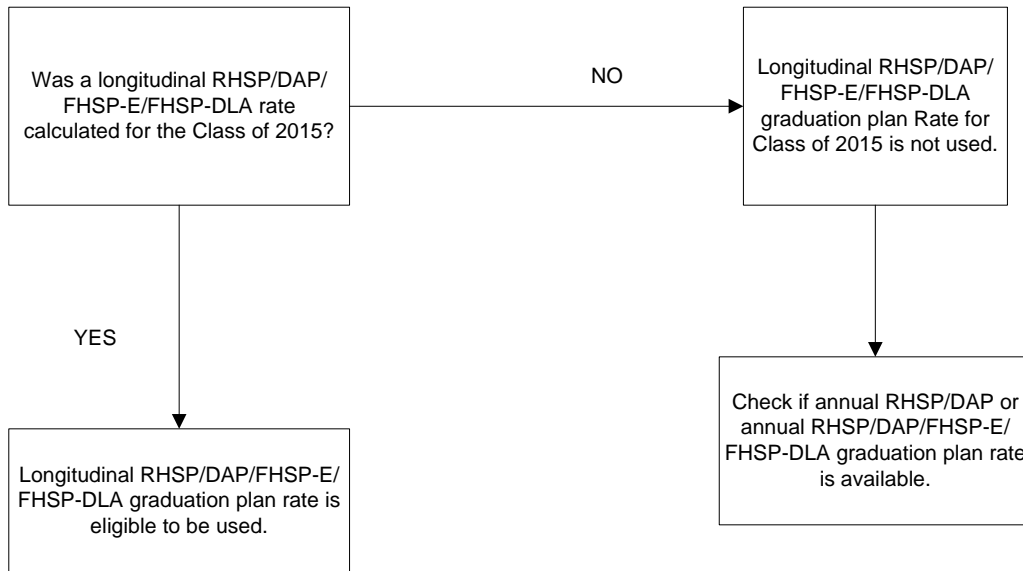


2016 Small Numbers Analysis
Index 4: Postsecondary Readiness
Part Three—Graduation Plan Component

STANDARD DISTRICTS AND CAMPUS TYPES

Recommended High School Program/Distinguished Achievement Program/Foundation High School Plan with Endorsements/Foundation High School Plan – Distinguished Level of Achievement (RHSP/DAP/FHSP-E/FHSP-DLA) Longitudinal Rates

Two-year averages for the longitudinal RHSP/DAP/FHSP-E/FHSP-DLA rate cannot be calculated because only one year of data is available in 2016.



2016 Small Numbers Analysis

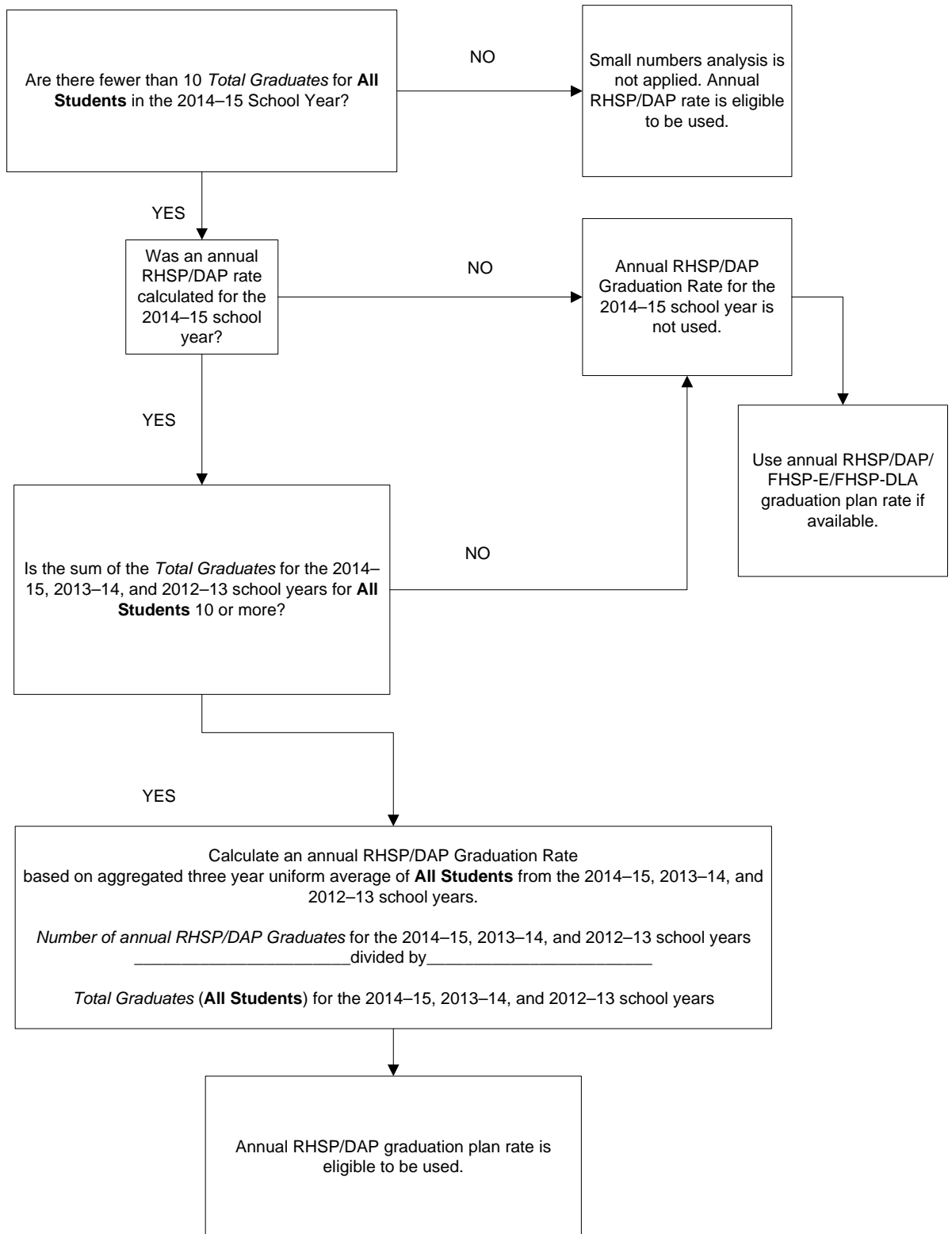
Index 4: Postsecondary Readiness

Part Three—Graduation Plan Component

STANDARD DISTRICTS AND CAMPUS TYPES

Recommended High School Program/Distinguished Achievement Program (RHSP/DAP) Annual Rates (without FHSP graduates)

Small numbers analysis is applied to the **All Students** student group if the *Number of Total Graduates* in the 2014–15 school year is fewer than 10 and there is no longitudinal RHSP/DAP or longitudinal RHSP/DAP/FHSP-E/FHSP-DLA rate available.

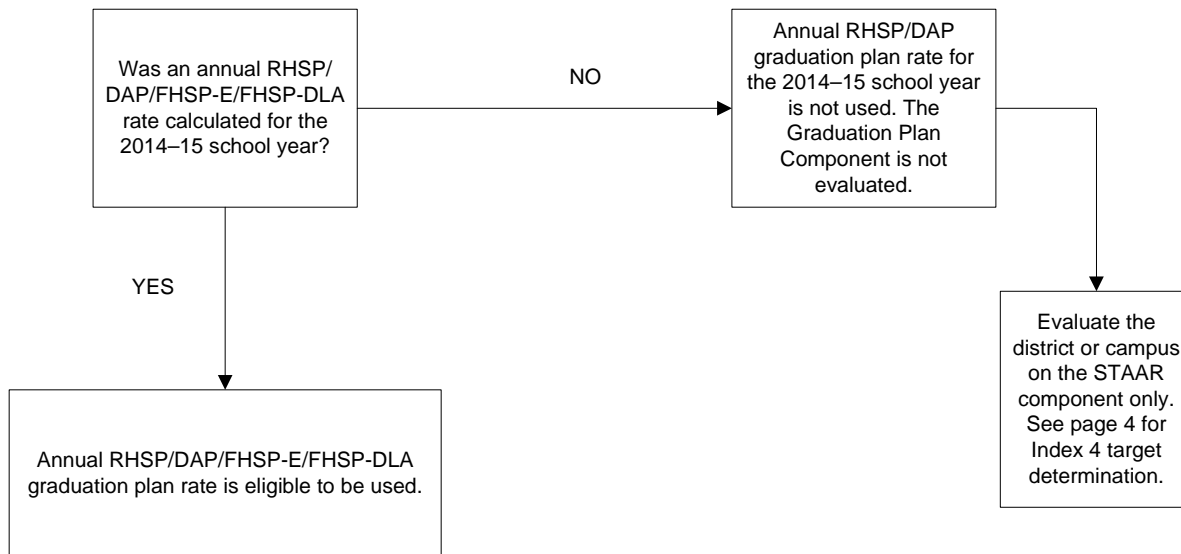


2016 Small Numbers Analysis
Index 4: Postsecondary Readiness
Part Three—Graduation Plan Component

STANDARD DISTRICTS AND CAMPUS TYPES

**Recommended High School Program/Distinguished Achievement Program (RHSP/DAP)/
Foundation High School Plan – Endorsement (FHSP-E)/Foundation High School Plan –
Distinguished Level of Achievement (FHSP-DLA) Annual Rates**

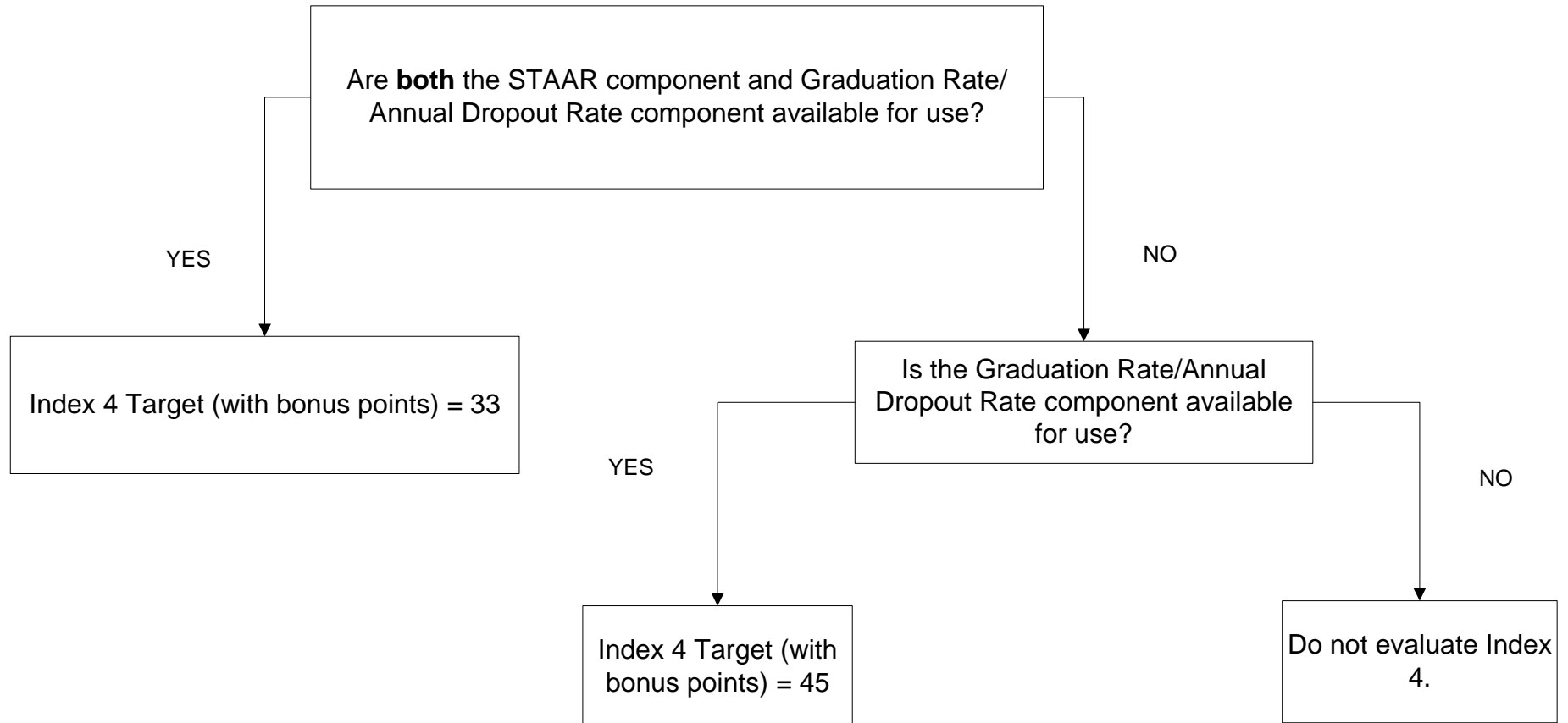
Two-year averages for the annual RHSP/DAP/FHSP-E/FHSP-DLA rate of Index 4 Bonus Points cannot be calculated because only one year of data is available in 2016.



2016 Small Numbers Analysis
Index 4: Postsecondary Component
Part Four—College and Career Readiness
STANDARD DISTRICTS AND CAMPUS TYPES

Two-year averages for the Postsecondary Component of Index 4 cannot be calculated due to a change in methodology beginning in 2016.

Index 4 Target Determination For AEA Districts and Campuses

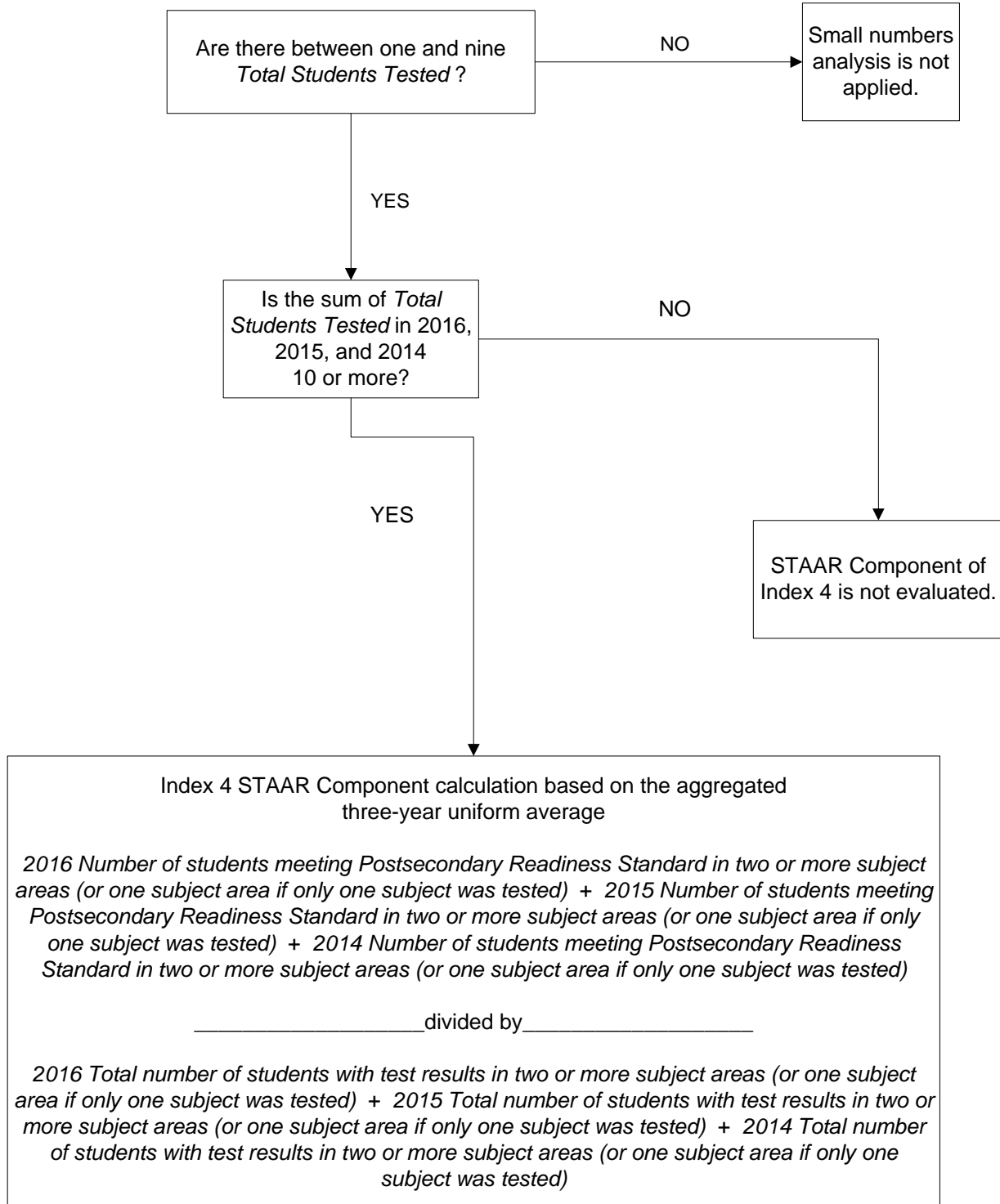


2016 Small Numbers Analysis Index 4: Postsecondary Readiness

Part One—STAAR Component

AEA DISTRICTS AND CAMPUSES

Small numbers analysis is applied if the *Total Students Tested* in 2016 is between one and nine. There must be at least one student tested in order for Index 4 STAAR component to be evaluated.

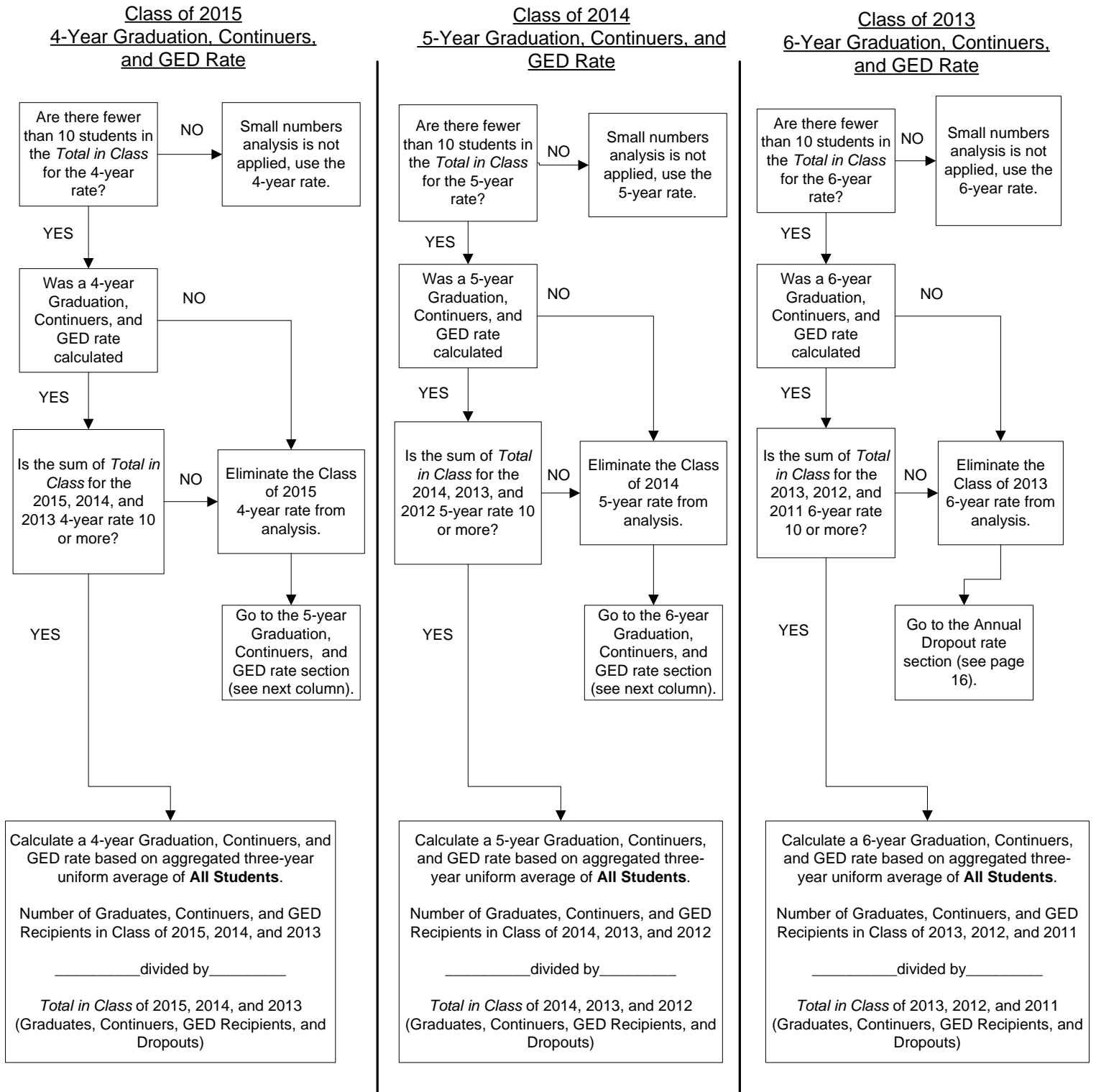


2016 Small Numbers Analysis Index 4: Postsecondary Readiness

Part Two—Graduation Rate Component

AEA DISTRICTS AND CAMPUSES

Graduation, Continuers, and GED Rate: Small numbers analysis is applied to the **All Students** student group if the *Total in Class* for the 4-year (Class of 2015), 5-year (Class of 2014), or 6-year (Class of 2013) is fewer than 10 students. AEA campuses use Graduation, Continuers, and GED rates for Index 4.



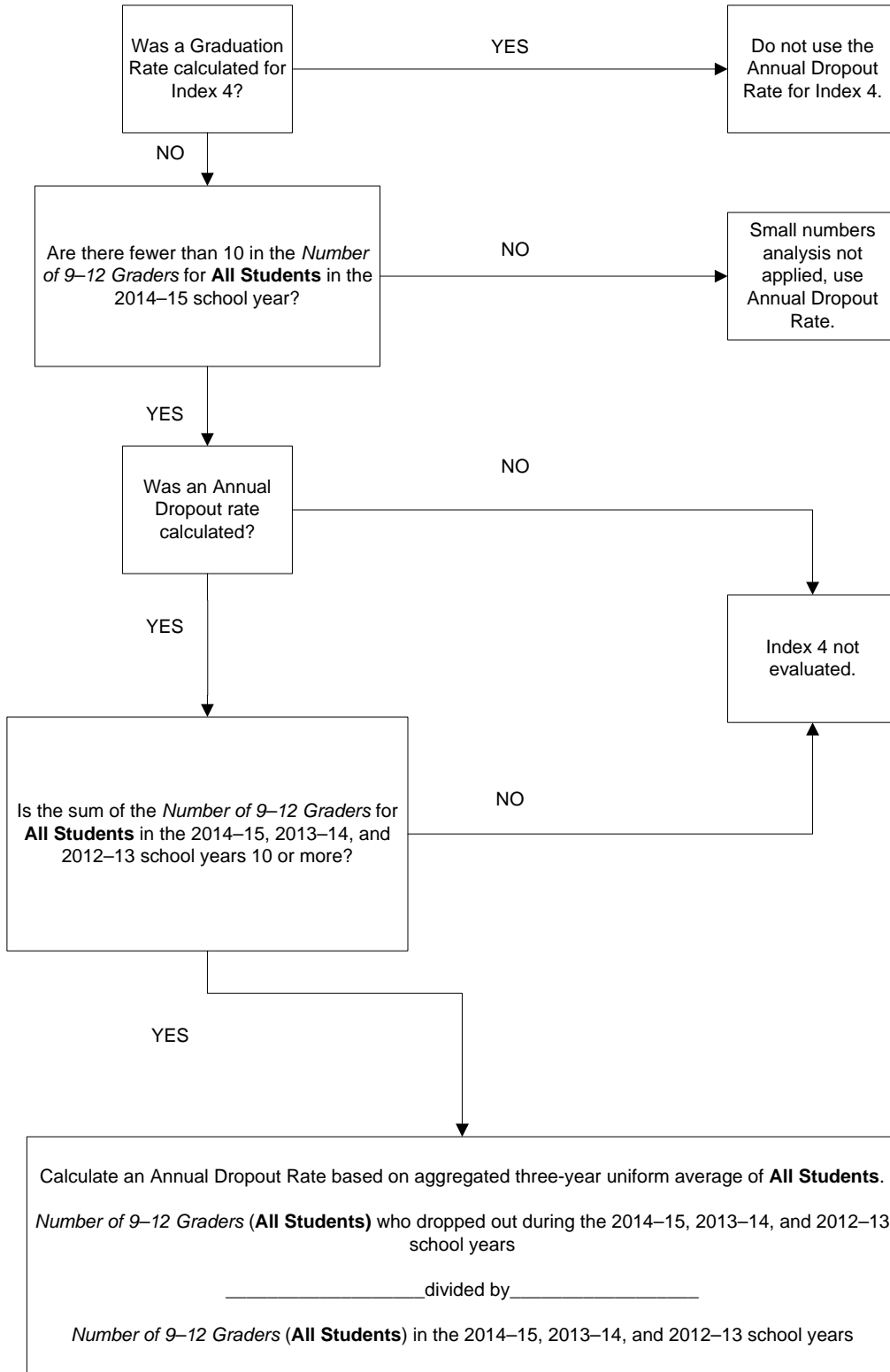
2016 Small Numbers Analysis

Index 4: Postsecondary Readiness

Part Two—Graduation Rate Component (Annual Dropouts)

AEA DISTRICTS AND CAMPUSES

Annual Dropout Rate (Gr 9–12): Small numbers analysis is applied to the **All Students** student group if the *Number of 9–12 Graders* in the 2014–15 school year is fewer than 10 and **if no Graduation Rate is calculated.**

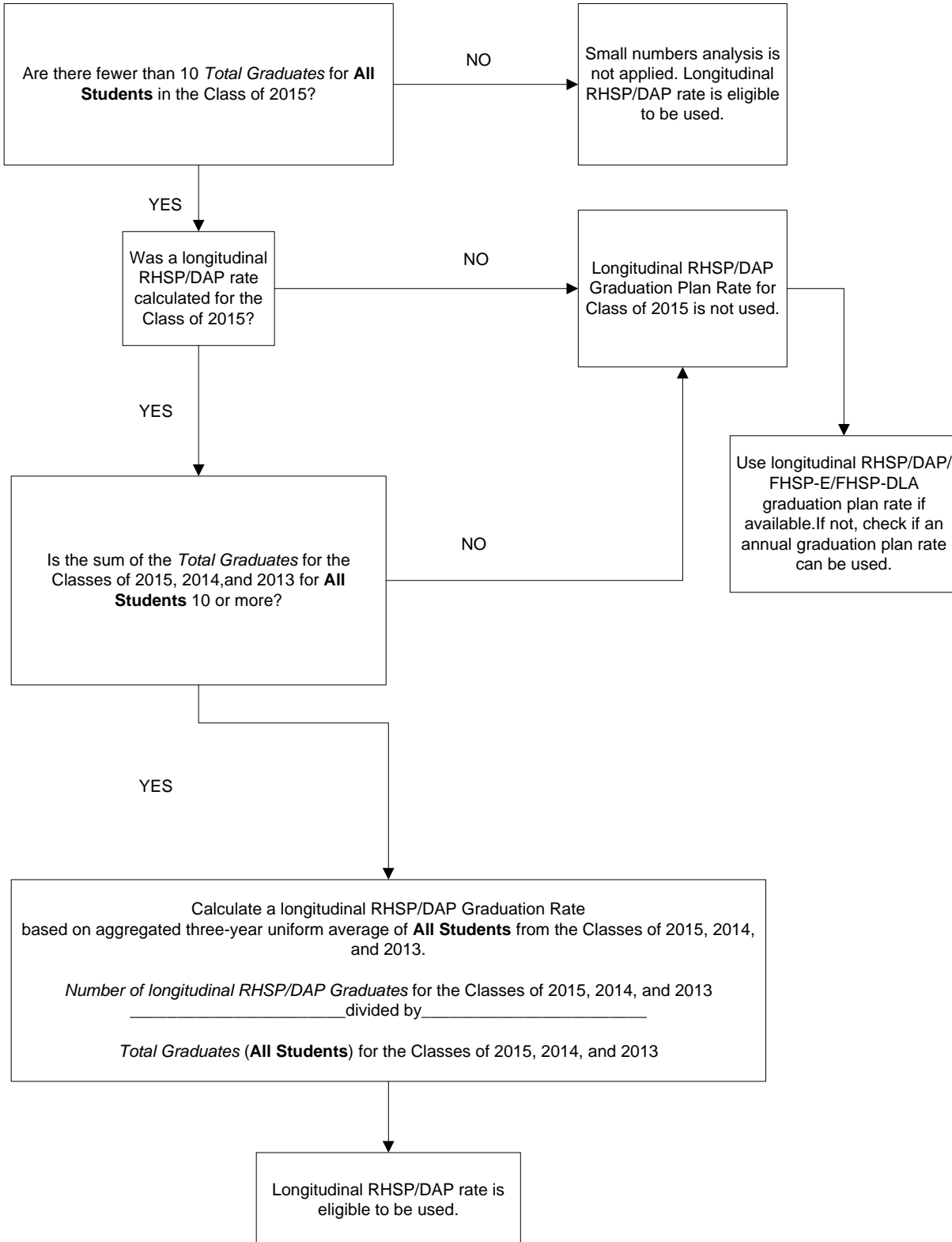


2016 Small Numbers Analysis

Index 4: Postsecondary Readiness

**Bonus Points—Recommended High School Program/Distinguished Achievement Program (RHSP/DAP)
Longitudinal Rates (Without Foundation High School Plan Graduates)**

AEA DISTRICTS AND CAMPUSES



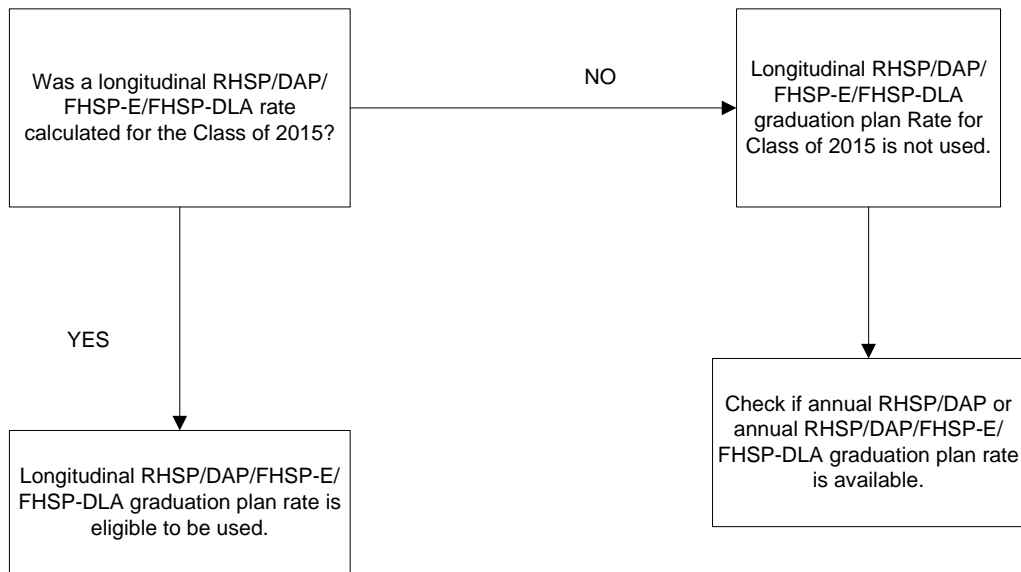
2016 Small Numbers Analysis

Index 4: Postsecondary Readiness

Bonus Points—Recommended High School Program/Distinguished Achievement Program (RHSP/DAP)/
Foundation High School Plan—Endorsement/Foundation High School Plan-Distinguished Level of
Achievement (DLA) Longitudinal Rates

AEA DISTRICTS AND CAMPUSES

Two-year averages for the longitudinal RHSP/DAP/FHSP-E/FHSP-DLA rate of Index 4 Bonus
Points cannot be calculated because only one year of data is available in 2016.



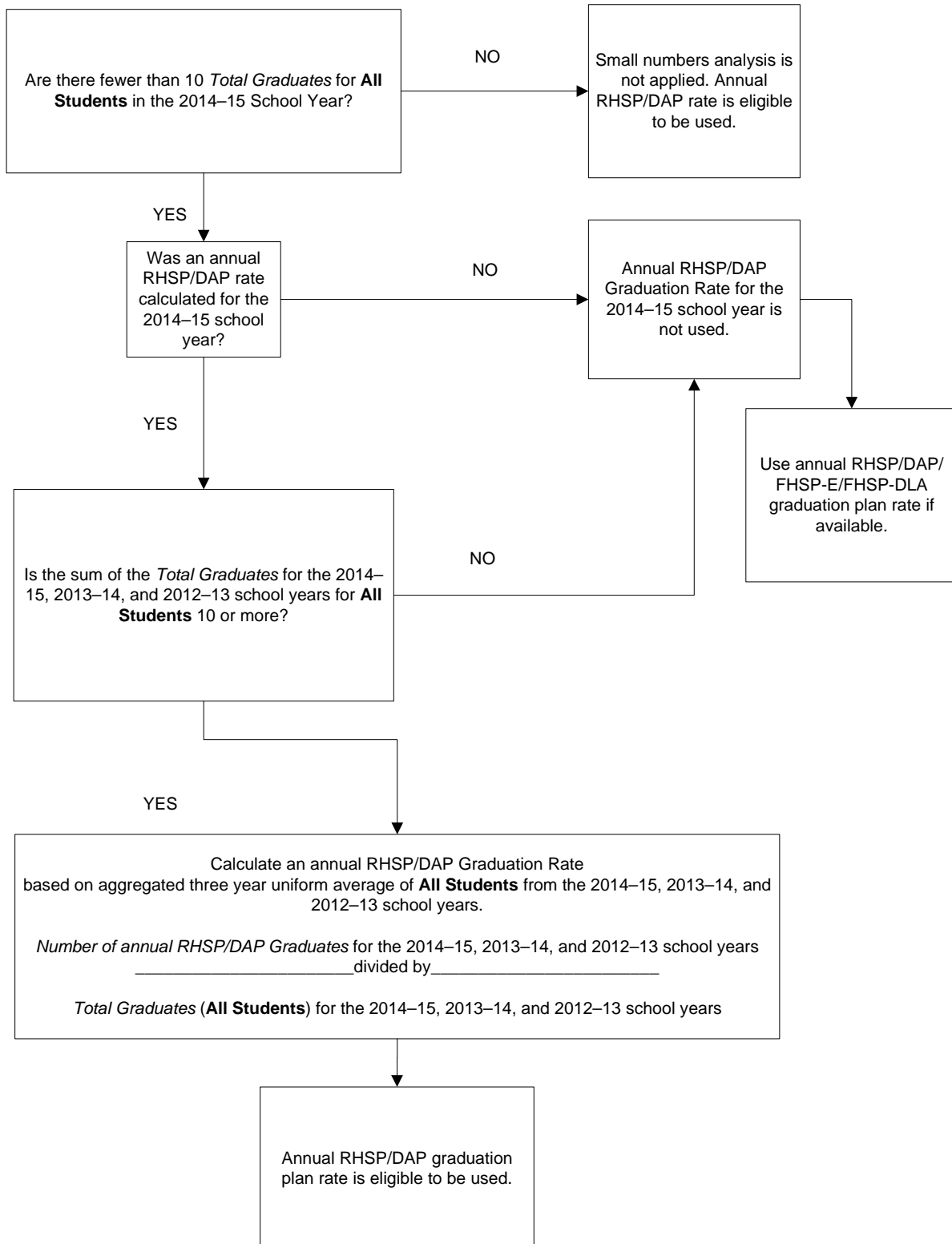
2016 Small Numbers Analysis

Index 4: Postsecondary Readiness

Bonus Points—Recommended High School Program/Distinguished Achievement Program (RHSP/DAP) Annual Rates (Without Foundation High School Plan Graduates)

AEA DISTRICTS AND CAMPUSES

Small numbers analysis is applied to the **All Students** student group if the *Number of Total Graduates* in the 2014–15 school year is fewer than 10.



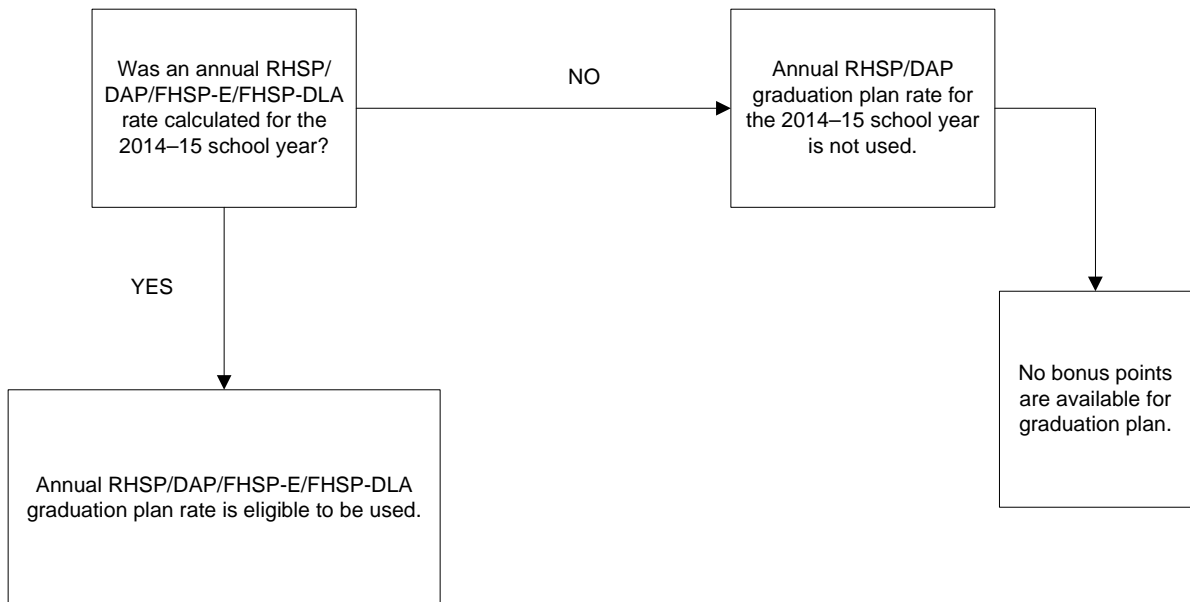
2016 Small Numbers Analysis

Index 4: Postsecondary Readiness

Bonus Points—Recommended High School Program/Distinguished Achievement Program (RHSP/DAP)/
Foundation High School Plan—Endorsement/Foundation High School Plan-Distinguished Level of
Achievement (DLA) Annual Rates

AEA DISTRICTS AND CAMPUSES

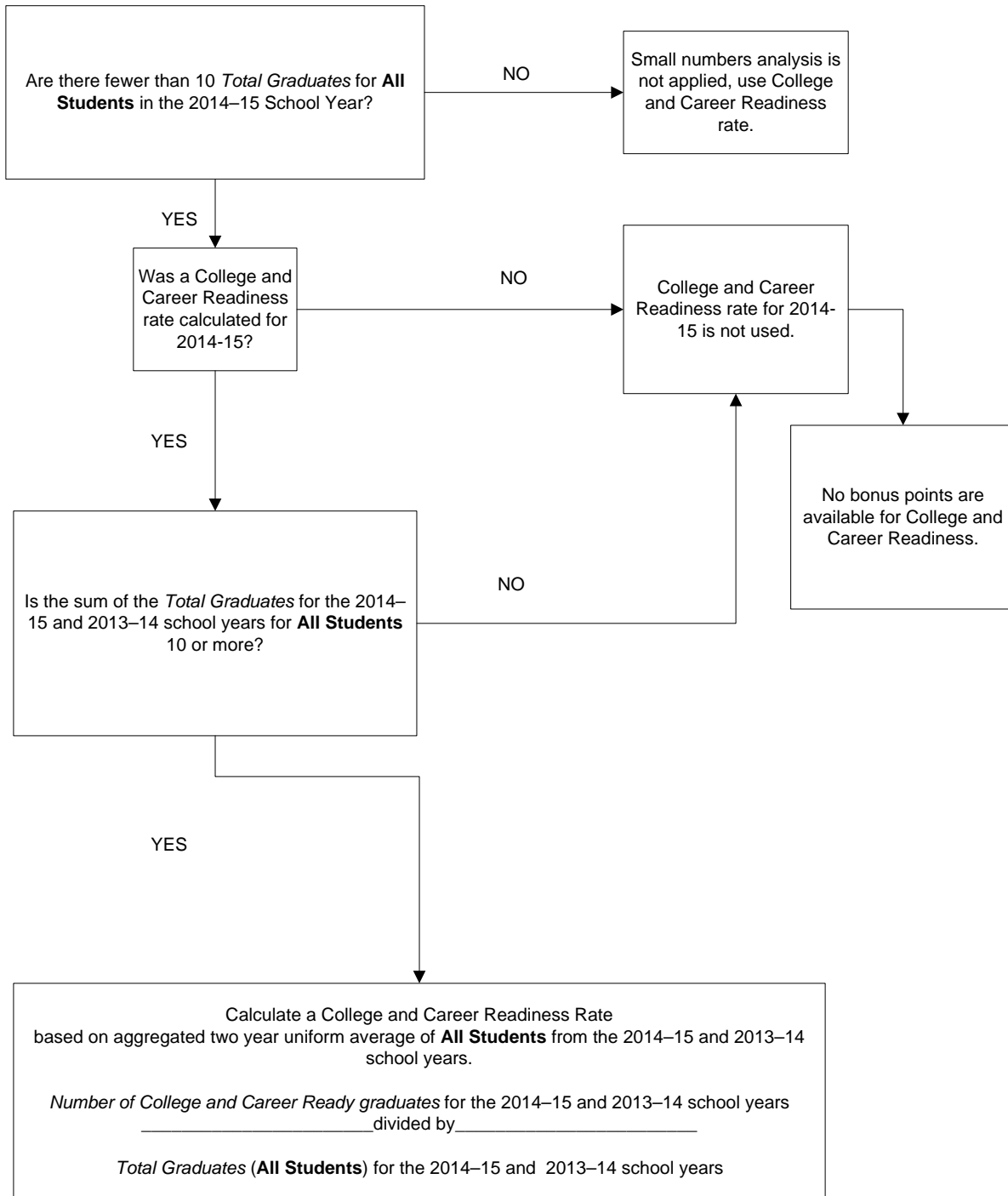
Two-year averages for the annual RHSP/DAP/FHSP-E/FHSP-DLA rate of Index 4 Bonus
Points cannot be calculated because only one year of data is available in 2016.



2016 Small Numbers Analysis Index 4: Postsecondary Component

Bonus Points—College and Career Readiness

AEA DISTRICTS AND CAMPUSES



**2016 Small Numbers Analysis
Index 4: Postsecondary Readiness**

Bonus Points—Excluded Students

AEA DISTRICTS AND CAMPUSES

Small numbers analysis is not applied to Excluded Students bonus points for Index 4.