



# **State Board of Education (SBOE)**

Phase 1 of LRP – Draft Design

September 2016

THE BOSTON CONSULTING GROUP

# Project overview and interview status

## Project Overview

Two-phase process underway to create a Long-Range Plan (LRP) for public primary and secondary education in Texas

Currently near the end of Phase 1, running from mid June to mid September

### Phase 1 activities include

- Gather input across stakeholders, including SBOE members and other individuals who are representative of other key groups
- Develop and finalize a design for creating the LRP

## Interview Status

<u>Category</u>	<u>Description</u>
SBOE Members	<ul style="list-style-type: none"><li>• 15 interviews</li></ul>
Other stakeholders	<ul style="list-style-type: none"><li>• 18 interviews w/ associations representing teachers, principals, school administrators, districts, parents and state government</li><li>• 45 interviews with LEAs</li></ul>

# Guiding principles related to design of developing the LRP

---

**Addresses most pressing issues facing public education in Texas**

**Conveys one consistent vision on statewide priorities across SBOE and TEA**

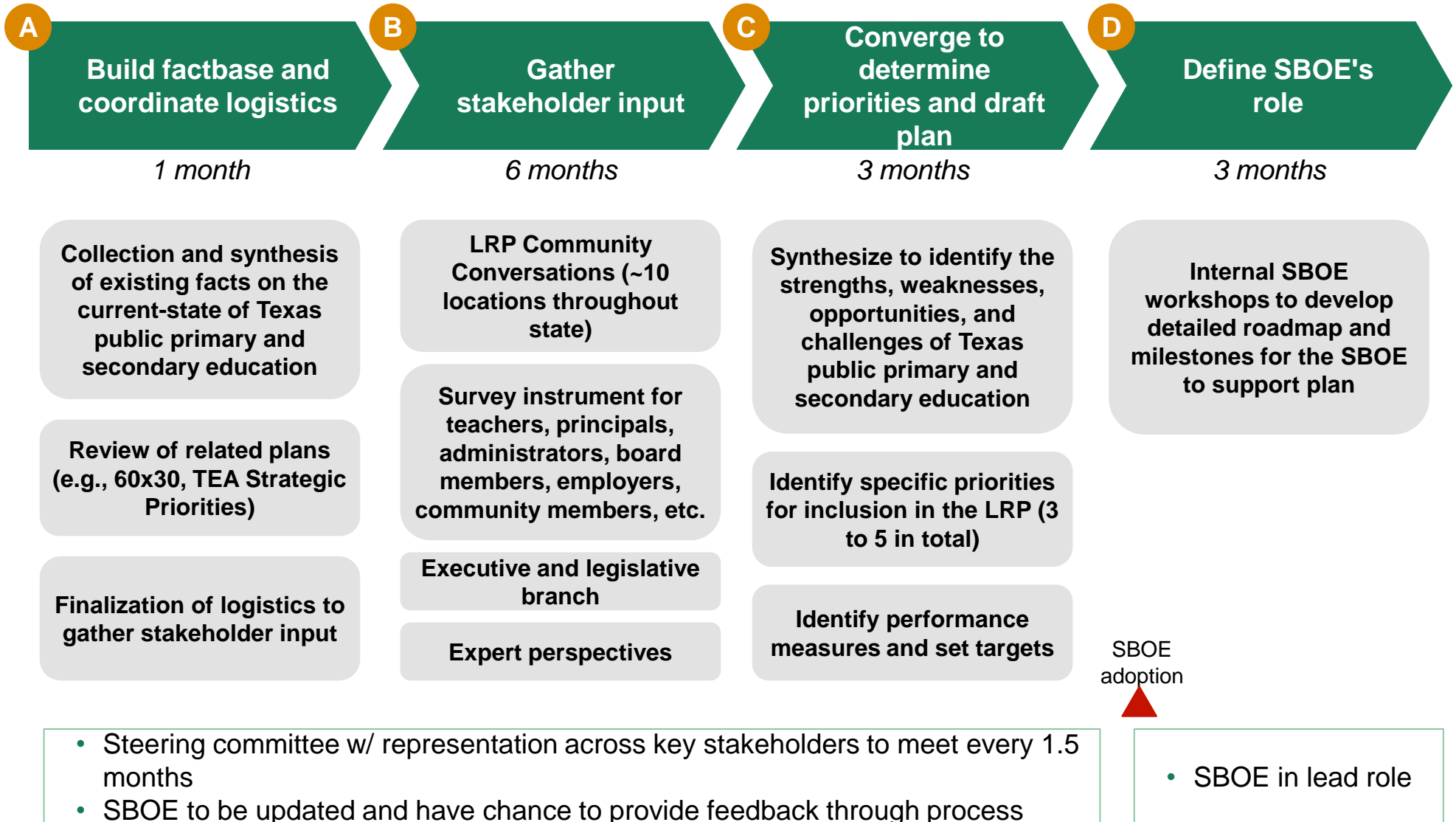
**Outlines clearly SBOE's role in supporting the priorities**

**Considers broad stakeholder input**

**Contains specific targets and processes to assess progress**

**Appropriately balances depth and coverage with fiscal responsibility**

# To meet principles, recommend four-phase process guided by a steering committee



# Proposed steering committee composition and schedule

## Overview

### 18 total members with representation from across state

- 5 SBOE members (including the Board Chair and the chair of the School Initiatives Committee)
- 3 members selected by the commissioners of TEA, THECB and TWC
- 10 members with each nominated by SBOE members not serving on steering committee

### Intent is to achieve representation across

- Urban and rural
- Different regions of the state
- Different stakeholder groups

### Group to meet in-person every 4 to 6 weeks for half-day long sessions

## Proposed Schedule

Meeting #	Key Agenda Items	SBOE
1	<ul style="list-style-type: none"> <li>• Kick-off (joint with SBOE)</li> </ul>	▲ Kick-off
2	<ul style="list-style-type: none"> <li>• Review of current-state</li> <li>• Synthesis on related plans/priorities (e.g., 60x30, TEA strategic priorities)</li> </ul>	
3	<ul style="list-style-type: none"> <li>• Update on stakeholder input</li> <li>• Deep-dive on critical topics – Teacher Recruitment and Support and Development of Learning Standards and Assessments</li> </ul>	
4	<ul style="list-style-type: none"> <li>• Update on stakeholder input</li> <li>• Deep-dive on critical topic – Instructional Materials and School Funding</li> </ul>	▲ Update/feedback
5	<ul style="list-style-type: none"> <li>• Update on stakeholder input</li> <li>• Deep-dive on critical topic – &lt;Placeholder Topics&gt;</li> </ul>	
6	<ul style="list-style-type: none"> <li>• Synthesize to identify the strengths, weaknesses, opportunities, and challenges of Texas public primary and secondary education</li> <li>• Determine specific priorities for inclusion in LRP</li> </ul>	
7	<ul style="list-style-type: none"> <li>• Identify performance measures and preliminary targets</li> <li>• Review draft plan</li> </ul>	▲ Adoption

Topics based on Phase 1 stakeholder input  
 Deep-dives to include

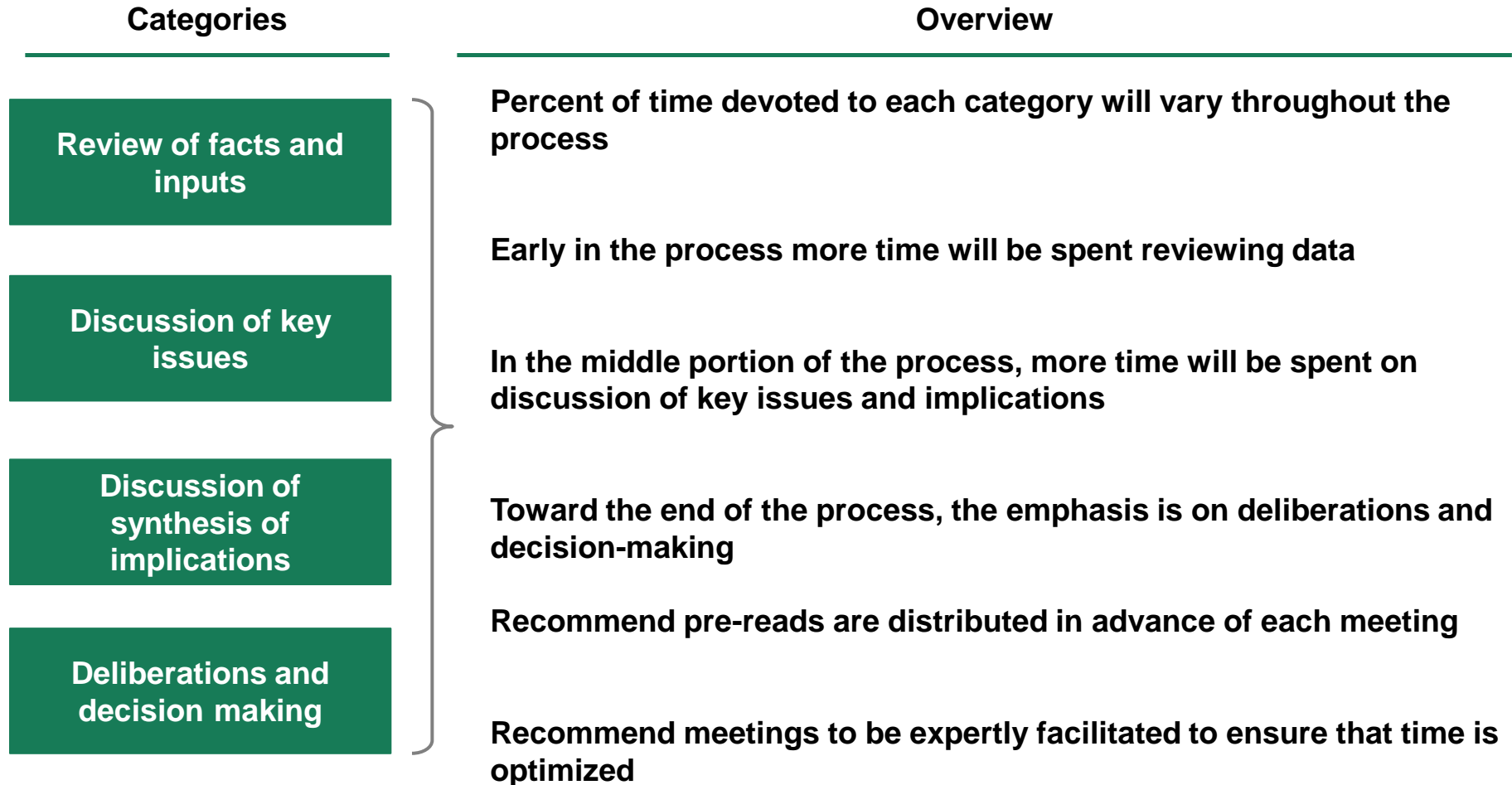
- Expert speakers
- Synthesis and discussion

▲ Adoption

# Detailed composition and criteria for selection

	# of members	Overview	Criteria for selection
<b>SBOE</b>	5	<ul style="list-style-type: none"> <li>Includes the Board Chair and the chair of the School Initiatives Committee</li> <li>Other 3 members selected by the Board</li> </ul>	<ul style="list-style-type: none"> <li>Active and experienced member of stakeholder group that they are chosen to represent</li> <li>Willingness and ability to think about the state as a whole</li> <li>Committed to attend all meetings and actively participate in process</li> <li>Ability to work collaboratively and courageously,</li> <li>Possesses high willingness to listen and ability to develop thoughtful perspectives on the education system</li> </ul>
<b>Stakeholders</b>	10	<ul style="list-style-type: none"> <li>Each SBOE member not on steering committee (10 of 15) to nominate individual from particularly stakeholder group</li> <li>Members to draw card identifying their stakeholder group</li> <li>Cards include                             <ul style="list-style-type: none"> <li>Urban student</li> <li>Rural parent</li> <li>Urban teacher</li> <li>Rural teacher</li> <li>Urban principal</li> <li>Rural principal</li> <li>Urban superintendent</li> <li>Rural board member</li> <li>Urban business leader</li> <li>Rural statewide education leader</li> </ul> </li> </ul>	
<b>Tri Agency (TEA, THECB, TWC)</b>	3	<ul style="list-style-type: none"> <li>Selected by the commissioners of TEA, THECB and TWC</li> </ul>	

# Steering committee meetings to comprise of different categories of activities



# Phase A: key activities and deliverables

## Key Activities

**Collect and synthesize existing facts on the current-state of Texas public primary and secondary education, leveraging completed reports and analyses**

- Academic performance
- Accountability and assessment
- College and career success
- Early learning
- Teacher and principal recruitment and support
- Technology

**Review relevant strategic plans and priorities (e.g., THECB's 60x30 and TEA's Strategic Priorities)**

**Identify logistical needs throughout process and finalize details**

- Schedule steering committee meetings
- Schedule joint steering committee and SBOE meetings
- Schedule LRP Community Conversations
- Schedule interviews with executive and legislative branches
- Schedule interviews with experts

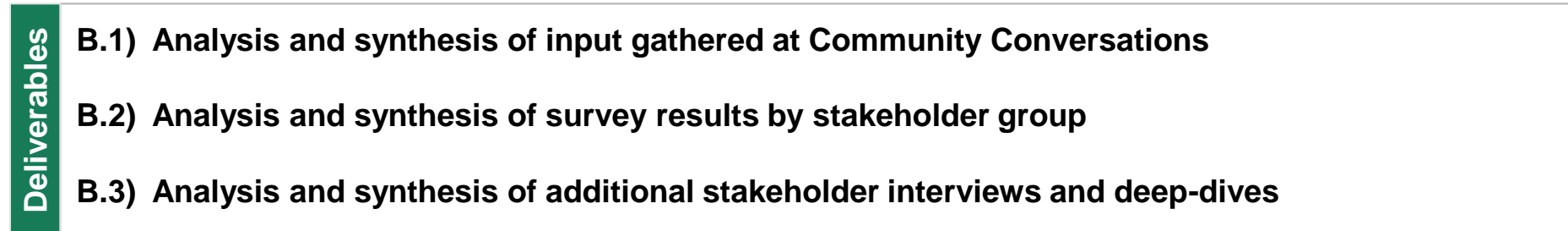
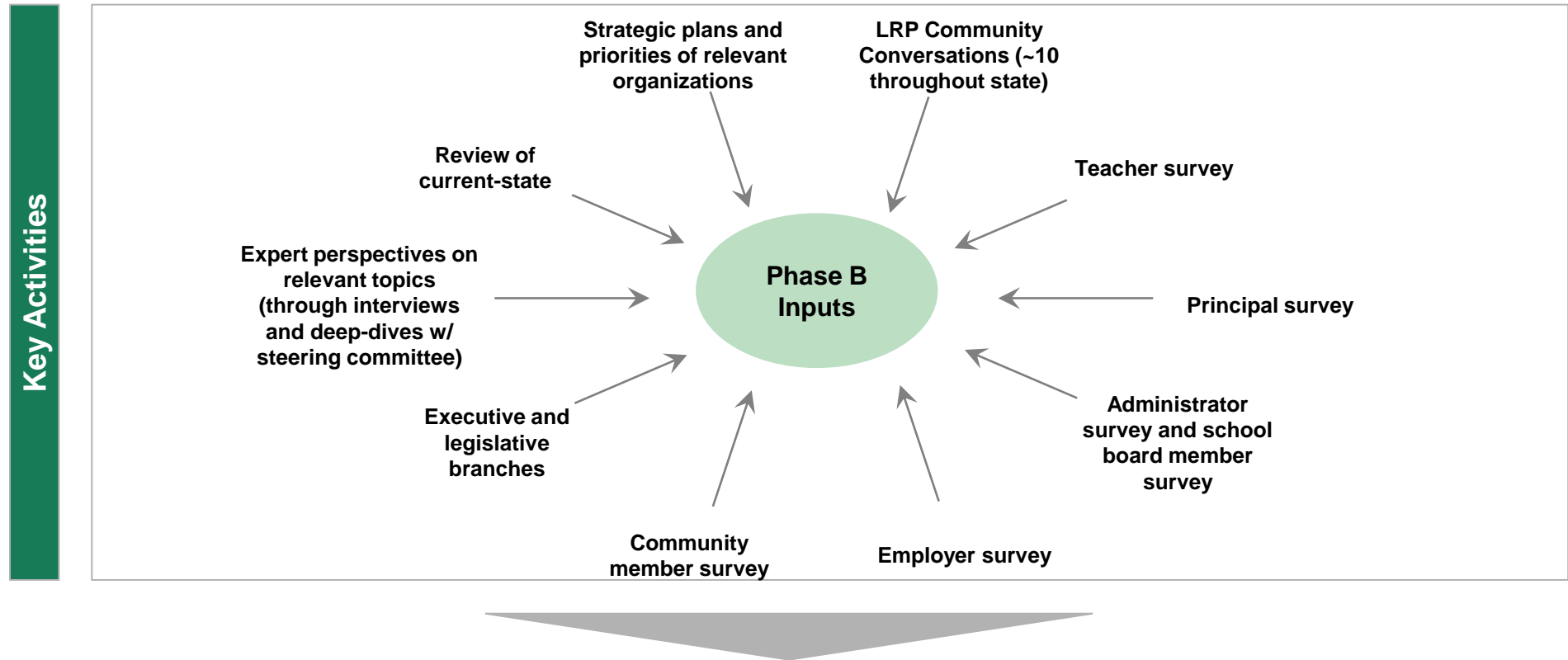
## Deliverables

**A.1) Review of current-state**

**A.2) Master calendar for LRP design process**



# Phase B: key activities and deliverables



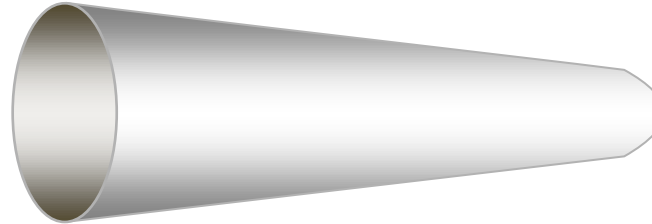
# Phase C: key activities and deliverables

## Key Activities

**Synthesize across stakeholder input and current-state to identify the strengths, weaknesses, opportunities, and challenges of Texas public primary and secondary education**

**Conduct workshop with Steering Committee to identify specific priorities**

**List of potential priorities identified through Phases A and B**



**Identify specific priorities for inclusion in the LRP (3 to 5 total)**

**Prioritize based on:**

- Impact on fulfilling the mission of Texas public education
- Feasibility to execute

**For each priority, identify performance measures and targets, including gathering of stakeholder input (e.g., survey instrument)**

## Deliverables

**C.1) Definition of 3 to 5 specific priorities for inclusion in the LRP and identification of performance measures and setting of targets**

# Phase D: key activities and deliverables

**Key Activities**

**Conduct series of workshops internal to SBOE to develop detailed roadmap and set milestones specific to SBOE's role in supporting the LRP**

**Workshops to answer set of questions**

- What is the internal vision of the SBOE regarding its role in fulfilling the mission of Texas public education?**
- For each priority, what are specific actions the SBOE can take consistent with its primary areas of responsibility?**
- For each priority, what are specific ways the SBOE can collaborate with other entities to achieve progress?**
- For each priority, what are milestones for the SBOE to track progress towards?**

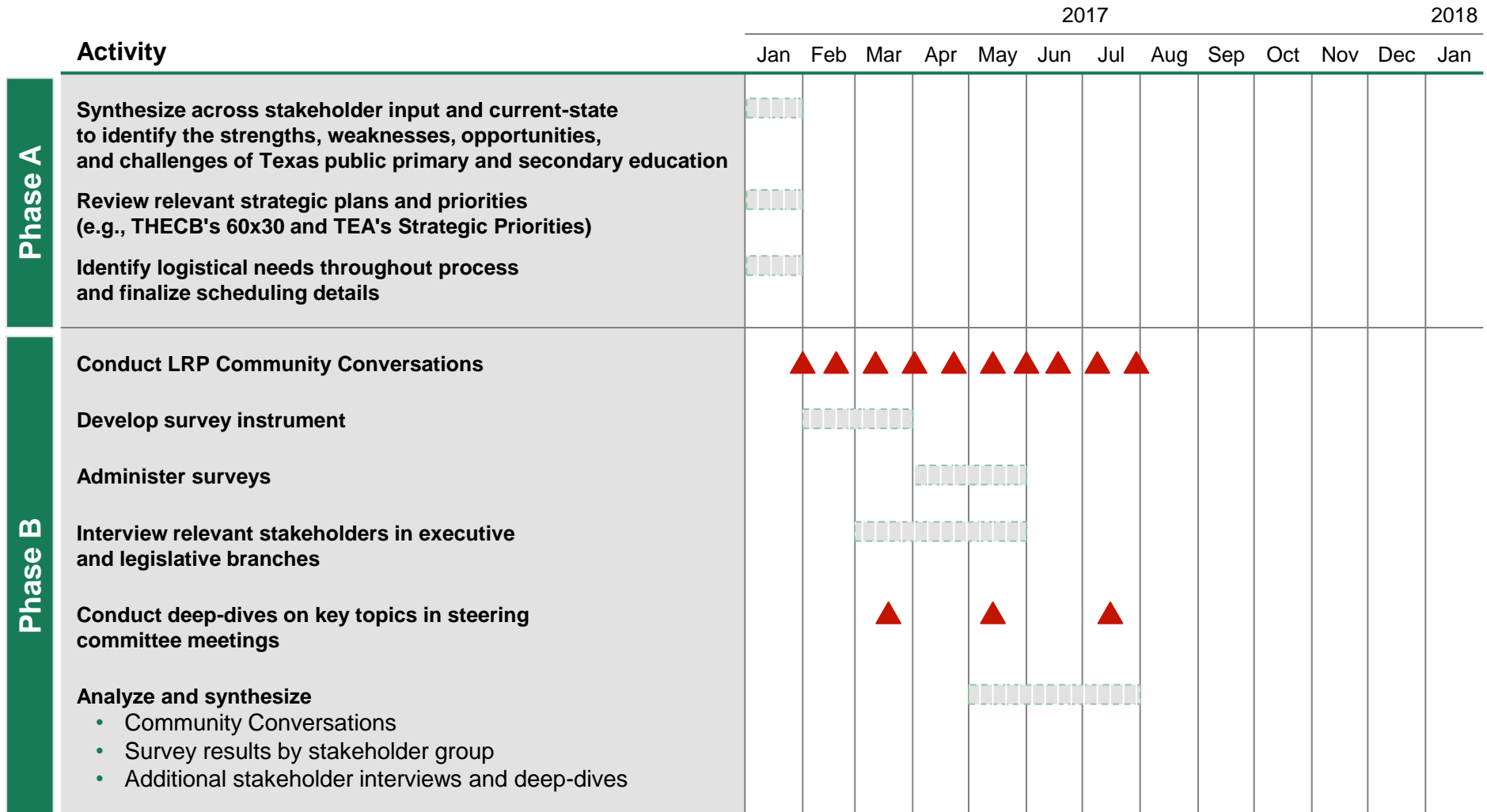


**Deliverables**

**D.1) SBOE Roadmap and Milestones to Support the LRP**

## Appendix – Timeline for Work Plan for Developing the LRP

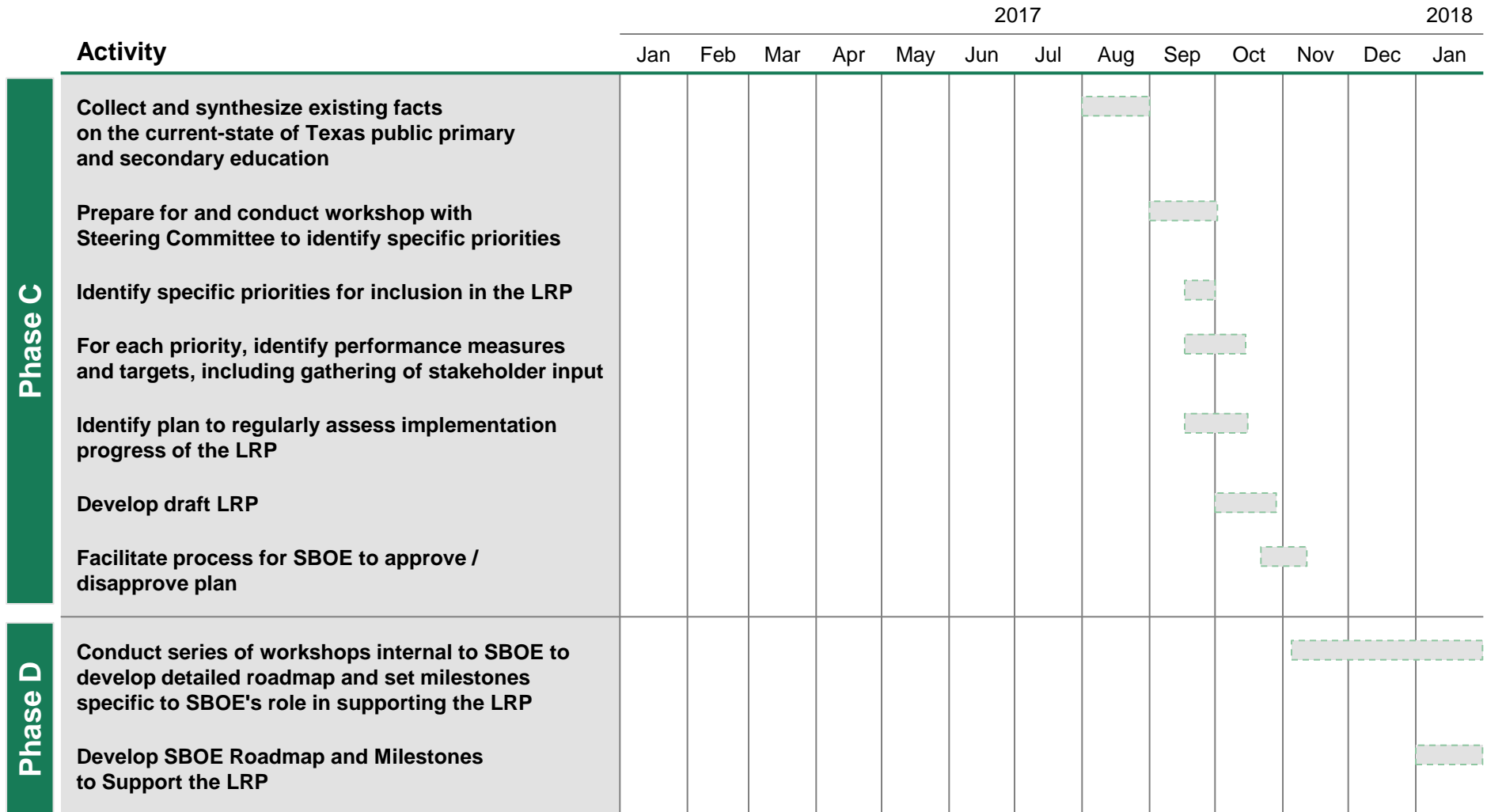
# Timeline (I)



Note: Assumes start of Phase A in January 2017

2016 09 16 SBOE LRP summary design vF.pptx

# Timeline (II)



Note: Assumes start of Phase A in January 2017