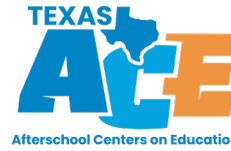


# Texas ACE

## Highlights and Key Takeaways from the 2022–23 Programming Period

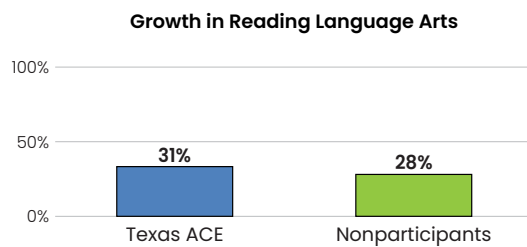


### Texas ACE Centers Statewide Performance on Key Federal Monitoring Measures (GPRA): 2022–23



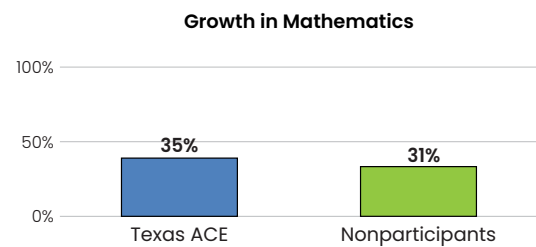
#### 1A. READING

**Definition:** The percentage of students in grades 4–8 participating in 21st CCLC programming during the school year and summer who demonstrate **growth<sup>1</sup> in reading language arts** on state assessments.<sup>2</sup>



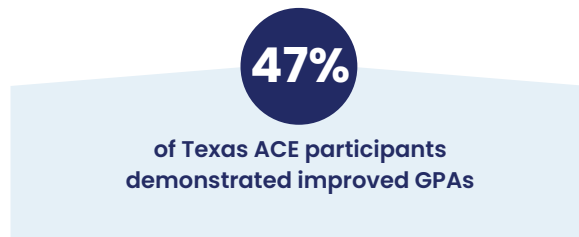
#### 1B. MATHEMATICS

**Definition:** The percentage of students in grades 4–8 participating in 21st CCLC programming during the school year and summer who demonstrate **growth<sup>1</sup> in mathematics** on state assessments.



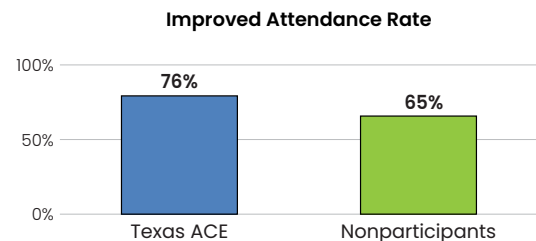
#### 2. GRADE POINT AVERAGE (GPA)

**Definition:** The percentage of students in grades 7 and 8 and grades 10–12 attending 21st CCLC programming during the school year and summer with a prior-year unweighted GPA of less than 3.0 who demonstrated **improvement in their GPA**.<sup>3</sup>



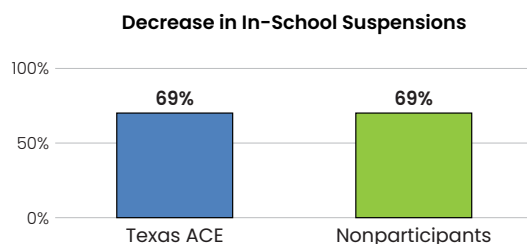
#### 3. SCHOOL DAY ATTENDANCE

**Definition:** The percentage of students in grades 1–12 participating in 21st CCLC during the school year who had a school-day attendance rate at or below 90% in the prior school year and demonstrated **improvement in their attendance** rate in the current school year.



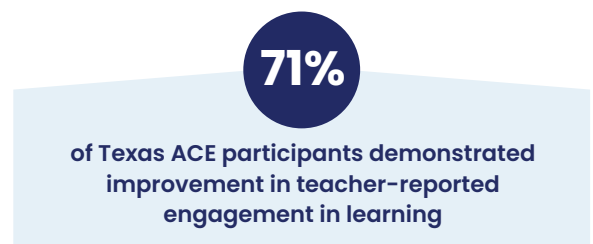
#### 4. IN-SCHOOL SUSPENSION

**Definition:** The percentage of students in grades 1–12 attending 21st CCLC programming during the school year and summer who experienced a **decrease in in-school suspensions** compared with the previous school year.



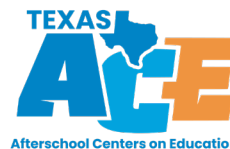
#### 5. ENGAGEMENT IN LEARNING

**Definition:** The percentage of students in grades 1–5 participating in 21st CCLC programming in the school year and summer who demonstrated an **improvement in teacher-reported engagement in learning**.<sup>4</sup>



# Texas ACE

## Highlights and Key Takeaways from the 2022–23 Programming Period



**Source.** Tx21st Student Tracking System data from 2022–23.

**Acronyms.** Texas ACE: Texas Afterschool Centers on Education. GPRA: Government Performance and Results Act.

**Notes.** Texas ACE is funded by the Nita M. Lowey 21st Century Community Learning Center (21st CCLC) federal grant and administered by the Texas Education Agency. Some graphs include fewer centers for some GPRA indicators that may have not been reported for students who attended a given center. The full sample of Texas ACE centers with GPRA data includes data from 353 centers in the Cycle 10 grant competition and 359 centers in the Cycle 11 competition. For all GPRA measures presented in this report, Texas ACE participants are defined as students who participated in 21st CCLC programming for at least 45 hours during the 2022–23 school year. Nonparticipating students include students who were enrolled in campuses served by Cycle 10 and 11 Texas ACE centers.

### Endnotes

1. For GPRA, growth represents meeting the State of Texas Assessments of Academic Readiness (STAAR) passing standard in 2022–23 for those students who did not meet the STAAR passing standard in the prior year. This statewide growth measure is calculated as the average of center-level growth measures for students who participated in 21st CCLC programming for at least 45 hours.
2. Throughout this report, “nonparticipants” are students who were enrolled in schools served by Cycle 10 and Cycle 11 Texas ACE programs but who did not participate in Texas ACE activities.
3. Improved GPA was reported only for those students participating in Texas ACE programming; therefore, comparison data are not available for nonparticipants.
4. Teacher-reported engagement was reported only for participants in Texas ACE programming; therefore, comparison data are not available for nonparticipants.