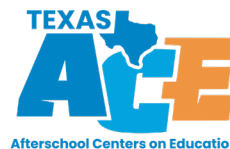


Texas ACE

Highlights and key takeaways from the 2023–24 programming period

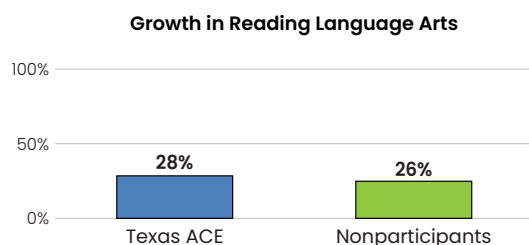


Texas ACE Centers Statewide Performance on Key Federal Monitoring Measures (GPRA), 2023–24¹



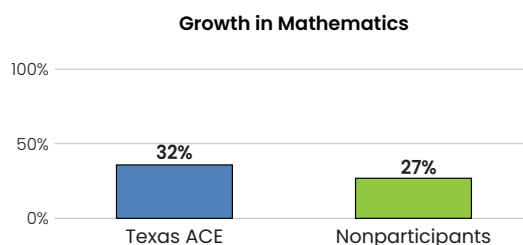
1A. READING

Definition: Percentage of students in Grades 4–8 participating in 21st CCLC programming during the school year and summer who demonstrate **growth² in reading and language arts** on state assessments.³



1B. MATHEMATICS

Definition: Percentage of students in Grades 4–8 participating in 21st CCLC programming during the school year and summer who demonstrate **growth in mathematics** on state assessments.



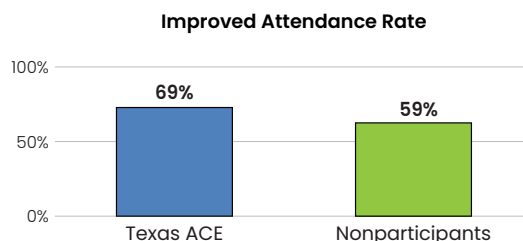
2. GRADE POINT AVERAGE (GPA)

Definition: Percentage of students in Grades 7 and 8 and Grades 10–12 attending 21st CCLC programming during the school year and summer with a prior-year unweighted GPA of less than 3.0 who demonstrated an **improved GPA⁴**.



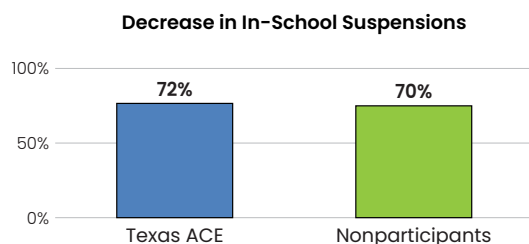
3. SCHOOL DAY ATTENDANCE

Definition: Percentage of students in Grades 1–12 participating in 21st CCLC during the school year who had a school-day attendance rate at or below 90% in the prior school year and demonstrated an **improved attendance rate** in the current school year.



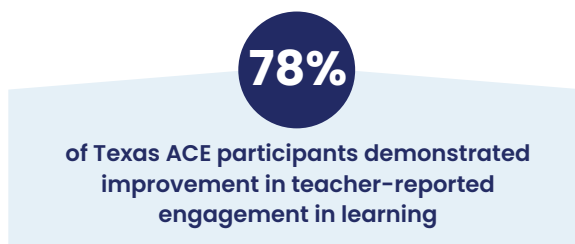
4. IN-SCHOOL SUSPENSION

Definition: Percentage of students in Grades 1–12 attending 21st CCLC programming during the school year and summer who experienced a **decrease of in-school suspensions** compared with the previous school year.



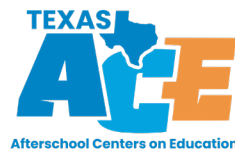
5. ENGAGEMENT IN LEARNING

Definition: Percentage of students in Grades 1–5 participating in 21st CCLC programming in the school year and summer who demonstrated an **improvement in teacher-reported engagement in learning⁵**.



Texas ACE

Highlights and key takeaways from the 2023–24 programming period



Source. Tx21st Student Tracking System data from 2023–24.

Acronyms: Texas ACE: Texas Afterschool Centers on Education. GPRA: Government Performance and Results Act.

Notes. Texas ACE is funded by the Nita M. Lowey 21st Century Community Learning Center (21st CCLC) federal grant and administered by the Texas Education Agency. Some graphs include fewer centers for some GPRA indicators because centers did not report the measure or did not serve students in the grade range associated with the measure. Students may have been counted more than once if they attended multiple centers or multiple feeders. The full sample of Texas ACE centers includes data from 356 centers in the Cycle 11 grant competition and 323 centers in the Cycle 12 competition. For all GPRA measures presented in this report, Texas ACE participants are defined as students who participated in 21st CCLC programming for at least 45 hours during the 2023–24 school year. Nonparticipating students include students who were enrolled in campuses that were served by Cycle 11 and Cycle 12 Texas ACE centers.

Endnotes

1. The number of students included for each of the figures are: 1A: 14,447 participants and 42,202 nonparticipants; 1B: 16,471 participants and 49,364 nonparticipants; 2: 4,317 participants; 3: 22,657 participants and 92,000 nonparticipants; 4: 6,612 participants and 25,951 nonparticipants; 5: 55,790 participants.
2. For GPRA, growth represents meeting the State of Texas Assessments of Academic Readiness (STAAR) passing standard in 2023–24 for the students who did not meet the STAAR passing standard in the prior year. This statewide growth measure is calculated as the average of center-level growth measures for students who participated in 21st CCLC programming for at least 45 hours.
3. Throughout this report, “nonparticipants” are students who were enrolled in schools served by Cycle 11 and Cycle 12 Texas ACE programs but who did not participate in Texas ACE activities.
4. Improved GPA was reported only for those students participating in Texas ACE programming; therefore, comparison data are not available for nonparticipants.
5. Teacher-reported engagement was reported only for participants in Texas ACE programming. Therefore, no comparison data are available for nonparticipants.