

TO: Governor Abbott,
Lieutenant Governor Patrick
Speaker Straus of the House of Representatives
Members of the 85th Texas Legislature

From: Texas Education Agency

Date: December 13, 2017

RE: Postsecondary Readiness Assessment Instruments

House Bill 5, passed by the 83rd Texas Legislature added new Section 39.0238 to the Texas Education Code requiring the adoption and administration of postsecondary readiness assessment instruments. The statute also required the agency to provide the legislature a report on the summary of student performance on the preceding year's post-secondary readiness assessment instruments.

Attached are the summary reports from the Spring 2016 and Spring 2017 administrations of the STAAR Algebra II and English III End-of-Course assessments.

Please contact Governmental Relations at GovRel@tea.texas.gov or 512/463-9682 if you have any questions.

Postsecondary Readiness Assessments Summary Information

	<u>Spring 2016</u>	<u>Spring 2017</u>
# of 11th Graders in Texas*	351,888	363,655
English III EOC Assessment		
# of Students Assessed	10,337	10,076
% of 11th Grade Students Given English III*	2.9%	2.8%
% of Test Takers at Approaches Grade Level**	70%	71%
% of Test Takers at Masters Grade Level***	13%	11%
Algebra II EOC Assessment		
# of Students Assessed	14,252	13,326
% of 11th Grade Students Given Algebra II*	4.1%	3.7%
% of Test Takers at Approaches Grade Level**	79%	81%
% of Test Takers at Masters Grade Level***	18%	23%

* Students generally, but not exclusively, take English III in 11th grade. Students take Algebra II in a mix of grades. These percentages are included to give a sense of scope in terms of the percent of Texas students who take these assessments. These percentages are not meant to precisely reflect the percentage of students who take an End-of-Course (EOC) assessment as a function of the percent of students who participate in those classes.

** In the 2015-2016 school year, STAAR results were reported with the term “Level II: Satisfactory”. In the 2016-2017 school year, this terminology was changed to “Approaches Grade Level”. This is the minimum standard required for the other EOC assessments required for graduation.

*** In the 2015-2016 school year, STAAR results were reported with the term “Level III: Advanced”. In the 2016-2017 school year, this terminology was changed to “Masters Grade Level”. This standard is roughly equivalent to the college readiness criteria recommended for the SAT (a score of 480 on Reading and Writing and 530 on Math) and the ACT (a score of 18 on English, 22 on Reading, and 22 on Math).



STATE OF TEXAS ASSESSMENTS OF ACADEMIC READINESS
Constructed Responses Summary Report
ENGLISH III
All Students

STATEWIDE

Report Date: SUMMER 2016
 Date of Testing: SPRING 2016

--- = No Data Reported For Fewer Than Five Students

Short Answer Rating Summary

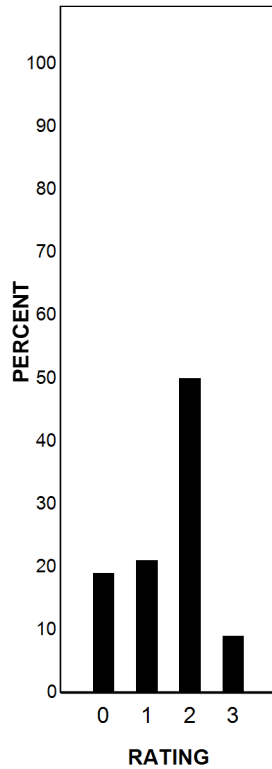
Written Composition Rating Summary

Single Selection

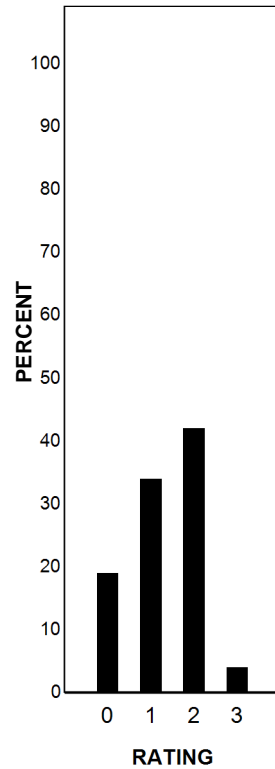
Paired Selections

Analytical Composition

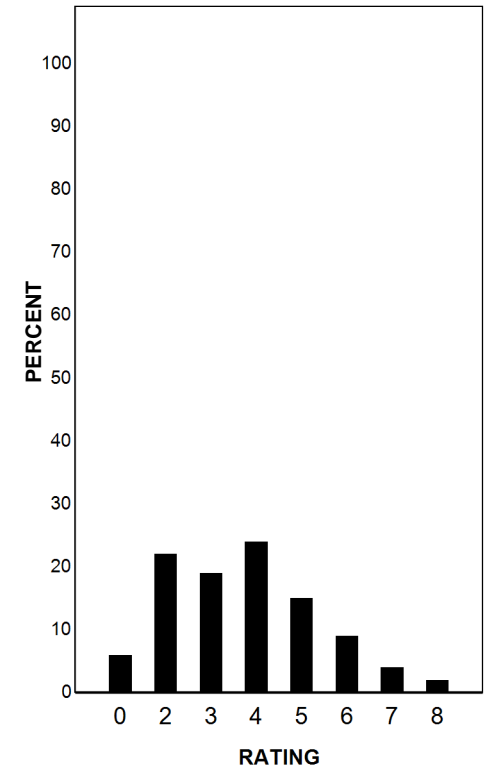
Rating	#	%
0	1991	19
1	2220	21
2	5169	50
3	957	9
Total	10337	100



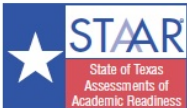
Rating	#	%
0	2005	19
1	3551	34
2	4328	42
3	453	4
Total	10337	100



Rating	#	%
0	591	6
2	2265	22
3	1935	19
4	2468	24
5	1564	15
6	932	9
7	405	4
8	177	2
Total	10337	100



Each Composition has been scored independently by two readers. The written composition rating of 0-8 represents the summation of these scores.



STATE OF TEXAS ASSESSMENTS OF ACADEMIC READINESS

Summary Report

ENGLISH III

First-Time Tested Students

STATEWIDE

Report Date: SUMMER 2016

Date of Testing: SPRING 2016

Administration Summary			Number of Students Tested	Average Scale Score	PASSED				DID NOT PASS		Results for Each Reporting Category															
Number	Percent	Level II: Satisfactory			Level III: Advanced	Level I: Unsatisfactory	1						2		3		4		5		6					
Students Tested	10337						88	Understanding/ Analysis Across Genres						Understanding/ Analysis of Literary Texts		Understanding/ Analysis of Informational Texts		Composition		Revision		Editing				
Students Not Tested					Short Answer Rating (Single Selection)	Short Answer Rating (Paired Selections)	Multiple Choice	Number of Points Possible						9		11		24		11		11				
Absent	1357	12						Number of Points Scored						# %		# %		# %		# %		# %				
Other	26	0			#	%	#	%	#	%	#	%	#	%	#	%	#	%	#	%	#	%	#	%		
Total Documents Submitted	11720	100																								
Legend																										
--- = No Data Reported For Fewer Than Five Students																										
All Students	10337	3985	7211	70	1380	13	3126	30	4.5	50	3.9	44	3.6	61	5.9	53	6.5	59	11.0	46	6.7	61	7.0	64		
Male	5343	3886	3315	62	518	10	2028	38	3.9	43	3.5	39	3.4	57	5.5	50	6.2	56	10.2	43	6.5	59	6.6	60		
Female	4993	4092	3895	78	862	17	1098	22	5.1	57	4.4	49	3.9	65	6.3	57	6.8	62	11.8	49	7.0	64	7.4	68		
No Information Provided	1																									
Hispanic/Latino	7188	3973	4990	69	899	13	2198	31	4.5	50	4.0	44	3.6	60	5.8	53	6.4	58	11.0	46	6.6	60	6.9	63		
American Indian or Alaska Native	25	3879	15	60	4	16	10	40	4.2	47	4.2	47	3.0	51	5.5	50	5.8	52	11.3	47	6.3	57	6.3	57		
Asian	92	4244	71	77	33	36	21	23	5.0	56	4.3	47	4.2	70	6.6	60	7.2	66	13.2	55	7.6	69	8.0	73		
Black or African American	789	3858	462	59	69	9	327	41	4.2	47	3.6	40	3.4	56	5.3	48	5.9	54	10.0	41	6.1	56	6.5	59		
Native Hawaiian or Other Pacific Islander	10	3941	7	70	0	0	3	30	4.8	53	3.3	37	3.7	62	5.7	52	6.6	60	12.3	51	5.4	49	6.3	57		
White	2135	4061	1594	75	365	17	541	25	4.6	51	3.9	44	3.9	65	6.3	58	6.9	63	11.2	47	7.2	66	7.5	68		
Two or More Races	92	4002	68	74	9	10	24	26	4.5	50	3.8	42	3.7	62	6.0	55	6.3	57	11.2	46	6.8	62	6.9	63		
No Information Provided	6	4103	4	67	1	17	2	33	5.5	61	5.5	61	3.3	56	6.2	56	7.0	64	13.0	54	5.7	52	7.0	64		
Economically Disadvantaged	Yes 6796 No 3540 No Information Provided 1	3938 4076	4529 2682	67 76	741 639	11 18	2267 858	33 24	4.4 4.7	48 52	3.9 4.1	43 46	3.5 3.9	58 65	5.7 6.3	52 57	6.3 6.8	57 62	10.7 11.6	44 48	6.5 7.2	59 65	6.8 7.5	61 68		
Title I, Part A	Participants 7534 Nonparticipants 2802 No Information Provided 1	3990 3971	5302 1909	70 68	1021 359	14 13	2232 893	30 32	4.6 4.3	51 48	4.0 3.7	45 41	3.6 3.6	61 60	5.8 5.9	53 54	6.5 6.5	59 59	11.1 10.7	46 45	6.7 6.8	61 62	7.0 7.1	63 64		
Migrant	Yes 173 No 10158 No Information Provided 6	3783 3989 3753	97 7111 3	56 70 50	5 1375 0	3 14 0	76 3047 3	44 30 50	3.7 4.5 2.5	41 50 28	3.4 3.9 3.0	38 44 33	3.2 3.6 2.8	53 61 47	5.1 5.9 5.7	46 54 52	5.7 6.5 5.7	52 59 52	9.1 11.0 9.5	38 46 40	6.1 6.7 6.2	55 61 56	6.2 7.0 6.3	56 64 58		
Limited English Proficient	Current LEP 803 Non-LEP (Monitored 1st Year) 88 Non-LEP (Monitored 2nd Year) 129 Other Non-LEP 9316 No Information Provided 1	3541 3908 3940 4025	256 58 90 6807	32 66 70 73	7 3 9 1361	1 3 7 15	547 30 39 2509	68 34 30 27	2.6 4.3 4.8 4.6	29 48 53 51	2.7 4.0 4.4 4.0	30 44 49 45	2.4 3.5 3.4 3.7	40 59 56 62	4.2 5.6 5.5 6.0	38 51 60 50	4.7 6.3 6.2 6.6	43 57 56 60	7.5 10.4 10.7 11.3	31 43 44 47	4.5 6.2 6.4 6.9	41 57 58 63	5.1 6.2 6.5 7.2	46 56 59 65		
Bilingual	Participants 2 Nonparticipants 10331 No Information Provided 4																									
ESL	Participants 783 Nonparticipants 9550 No Information Provided 4	3549 4021	253 6957	32 73	8 1372	1 14	530 2593	68 27	2.7 4.6	29 51	2.8 4.0	31 45	2.4 3.7	40 62	4.3 6.0	39 55	4.7 6.6	43 60	7.6 11.3	32 47	4.6 6.9	41 63	5.1 7.1	46 65		
Special Education	Yes 608 No 9728 No Information Provided 1	3406 4021	114 7097	19 73	5 1375	1 14	494 2631	81 27	2.0 4.6	22 51	1.7 4.1	19 45	2.2 3.7	37 62	3.7 6.0	34 55	4.2 6.6	39 60	6.8 11.3	28 47	4.1 6.9	37 63	4.4 7.2	40 65		
Gifted/Talented	Participants 820 Nonparticipants 9516 No Information Provided 1	4426 3947	755 6456	92 68	338 1042	41 11	65 3060	8 32	6.0 4.3	66 48	5.1 3.8	56 43	4.7 3.5	78 59	7.3 5.7	67 52	8.0 6.3	72 58	14.4 10.7	60 45	8.6 6.6	78 60	8.8 6.8	80 62		
At-Risk	Yes 4911 No 5426 No Information Provided 0	3726 4220	2491 7097	51 87	143 1237	3 23	2420 706	49 13	3.5 5.4	39 59	3.2 4.6	35 52	3.0 4.2	50 70	4.9 6.7	45 61	5.5 7.4	50 67	9.0 12.8	37 53	5.6 7.8	51 71	5.9 8.0	54 73		
Career/Technical Education	Participants 7343 Nonparticipants 2992 No Information Provided 2	3957 4054	5003 2207	68 74	853 527	12 18	2340 785	32 26	4.3 4.8	48 53	3.8 4.3	42 47	3.6 3.8	60 63	5.8 6.1	52 56	6.4 6.7	58 61	10.8 11.6	45 48	6.6 7.0	60 64	6.9 7.1	63 65		



STATE OF TEXAS ASSESSMENTS OF ACADEMIC READINESS
Constructed Responses Summary Report
ENGLISH III
First-Time Tested Students

STATEWIDE

Report Date: SUMMER 2016
 Date of Testing: SPRING 2016

--- = No Data Reported For Fewer Than Five Students

Short Answer Rating Summary

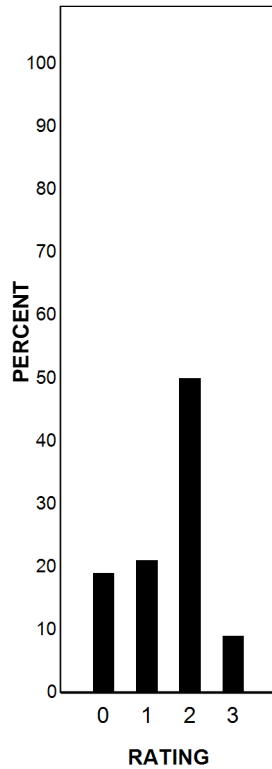
Written Composition Rating Summary

Single Selection

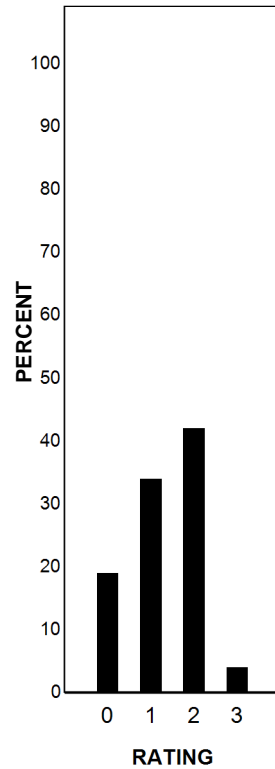
Paired Selections

Analytical Composition

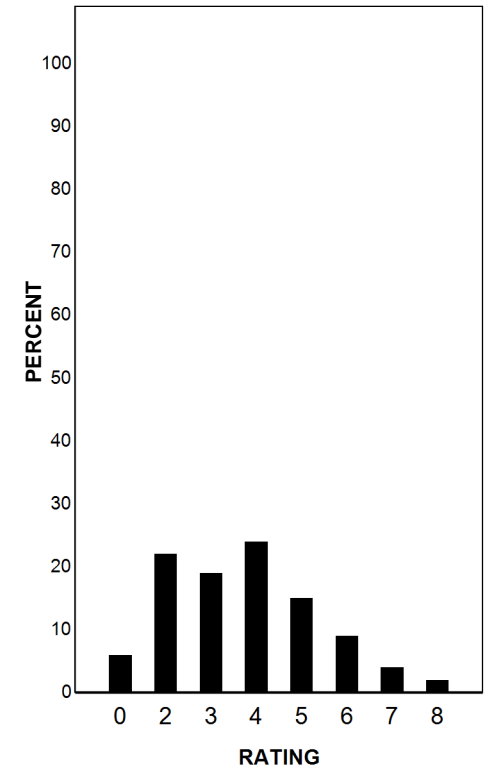
Rating	#	%
0	1991	19
1	2220	21
2	5169	50
3	957	9
Total	10337	100



Rating	#	%
0	2005	19
1	3551	34
2	4328	42
3	453	4
Total	10337	100



Rating	#	%
0	591	6
2	2265	22
3	1935	19
4	2468	24
5	1564	15
6	932	9
7	405	4
8	177	2
Total	10337	100



Each Composition has been scored independently by two readers. The written composition rating of 0-8 represents the summation of these scores.



STATE OF TEXAS ASSESSMENTS OF ACADEMIC READINESS
Combined Summary Report
ENGLISH III
All Students

STATEWIDE

Report Date: SUMMER 2016
 Date of Testing: SPRING 2016

Legend --- = No Data Reported For Fewer Than Five Students	STAAR			Total		
	Number of Students Tested	Level II: Satisfactory		Number of Students Tested	Level II: Satisfactory	
		#	%		#	%
All Students	10337	7211	70	10337	7211	70
Male	5343	3315	62	5343	3315	62
Female	4993	3895	78	4993	3895	78
No Information Provided	1	---	---	1	---	---
Hispanic/Latino	7188	4990	69	7188	4990	69
American Indian or Alaska Native	25	15	60	25	15	60
Asian	92	71	77	92	71	77
Black or African American	789	462	59	789	462	59
Native Hawaiian or Other Pacific Islander	10	7	70	10	7	70
White	2135	1594	75	2135	1594	75
Two or More Races	92	68	74	92	68	74
No Information Provided	6	4	67	6	4	67
Economically Disadvantaged	6796	4529	67	6796	4529	67
Yes	3540	2682	76	3540	2682	76
No	1	---	---	1	---	---
No Information Provided	1	---	---	1	---	---
Title I, Part A	7534	5302	70	7534	5302	70
Participants	2802	1909	68	2802	1909	68
Nonparticipants	1	---	---	1	---	---
No Information Provided	1	---	---	1	---	---
Migrant	173	97	56	173	97	56
Yes	10158	7111	70	10158	7111	70
No	6	3	50	6	3	50
No Information Provided	6	3	50	6	3	50
Limited English Proficient	803	256	32	803	256	32
Current LEP	88	58	66	88	58	66
Non-LEP (Monitored 1st Year)	129	90	70	129	90	70
Non-LEP (Monitored 2nd Year)	9316	6807	73	9316	6807	73
Other Non-LEP	1	---	---	1	---	---
No Information Provided	1	---	---	1	---	---
Bilingual	2	---	---	2	---	---
Participants	10331	7208	70	10331	7208	70
Nonparticipants	4	---	---	4	---	---
No Information Provided	4	---	---	4	---	---
ESL	783	253	32	783	253	32
Participants	9550	6957	73	9550	6957	73
Nonparticipants	4	---	---	4	---	---
No Information Provided	4	---	---	4	---	---
Special Education	608	114	19	608	114	19
Yes	9728	7097	73	9728	7097	73
No	1	---	---	1	---	---
No Information Provided	1	---	---	1	---	---
Gifted/Talented	820	755	92	820	755	92
Participants	9516	6456	68	9516	6456	68
Nonparticipants	1	---	---	1	---	---
No Information Provided	1	---	---	1	---	---
At-Risk	4911	2491	51	4911	2491	51
Yes	5426	4720	87	5426	4720	87
No	0	---	---	0	---	---
No Information Provided	0	---	---	0	---	---
Career/Technical Education	7343	5003	68	7343	5003	68
Participants	2992	2207	74	2992	2207	74
Nonparticipants	2	---	---	2	---	---
No Information Provided	2	---	---	2	---	---

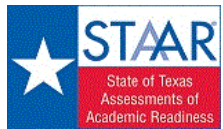


STATE OF TEXAS ASSESSMENTS OF ACADEMIC READINESS
Combined Summary Report
ENGLISH III
First-Time Tested Students

STATEWIDE

Report Date: SUMMER 2016
 Date of Testing: SPRING 2016

Legend --- = No Data Reported For Fewer Than Five Students	STAAR			Total		
	Number of Students Tested	Level II: Satisfactory		Number of Students Tested	Level II: Satisfactory	
		#	%		#	%
All Students	10337	7211	70	10337	7211	70
Male	5343	3315	62	5343	3315	62
Female	4993	3895	78	4993	3895	78
No Information Provided	1	---	---	1	---	---
Hispanic/Latino	7188	4990	69	7188	4990	69
American Indian or Alaska Native	25	15	60	25	15	60
Asian	92	71	77	92	71	77
Black or African American	789	462	59	789	462	59
Native Hawaiian or Other Pacific Islander	10	7	70	10	7	70
White	2135	1594	75	2135	1594	75
Two or More Races	92	68	74	92	68	74
No Information Provided	6	4	67	6	4	67
Economically Disadvantaged	6796	4529	67	6796	4529	67
Yes	3540	2682	76	3540	2682	76
No	1	---	---	1	---	---
No Information Provided	1	---	---	1	---	---
Title I, Part A	7534	5302	70	7534	5302	70
Participants	2802	1909	68	2802	1909	68
Nonparticipants	1	---	---	1	---	---
No Information Provided	1	---	---	1	---	---
Migrant	173	97	56	173	97	56
Yes	10158	7111	70	10158	7111	70
No	6	3	50	6	3	50
No Information Provided	6	3	50	6	3	50
Limited English Proficient	803	256	32	803	256	32
Current LEP	88	58	66	88	58	66
Non-LEP (Monitored 1st Year)	129	90	70	129	90	70
Non-LEP (Monitored 2nd Year)	9316	6807	73	9316	6807	73
Other Non-LEP	1	---	---	1	---	---
No Information Provided	1	---	---	1	---	---
Bilingual	2	---	---	2	---	---
Participants	10331	7208	70	10331	7208	70
Nonparticipants	4	---	---	4	---	---
No Information Provided	4	---	---	4	---	---
ESL	783	253	32	783	253	32
Participants	9550	6957	73	9550	6957	73
Nonparticipants	4	---	---	4	---	---
No Information Provided	4	---	---	4	---	---
Special Education	608	114	19	608	114	19
Yes	9728	7097	73	9728	7097	73
No	1	---	---	1	---	---
No Information Provided	1	---	---	1	---	---
Gifted/Talented	820	755	92	820	755	92
Participants	9516	6456	68	9516	6456	68
Nonparticipants	1	---	---	1	---	---
No Information Provided	1	---	---	1	---	---
At-Risk	4911	2491	51	4911	2491	51
Yes	5426	4720	87	5426	4720	87
No	0	---	---	0	---	---
No Information Provided	0	---	---	0	---	---
Career/Technical Education	7343	5003	68	7343	5003	68
Participants	2992	2207	74	2992	2207	74
Nonparticipants	2	---	---	2	---	---
No Information Provided	2	---	---	2	---	---



STATE OF TEXAS ASSESSMENTS OF ACADEMIC READINESS

Summary Report

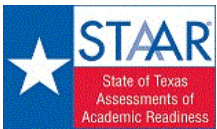
ENGLISH III

All Students

STATEWIDE

Report Date: SUMMER 2017
Date of Testing: SPRING 2017

Administration Summary			Number of Students Tested	Average Scale Score	Did Not Meet	Approaches	Meets	Masters	Results for Each Reporting Category																					
									Number	Percent	1		2		3		4		5		6									
Students Tested	10076	95							Understanding/ Analysis Across Genres	Understanding/ Analysis of Literary Texts	Understanding/ Analysis of Informational Texts	Composition	Revision	Editing	Number of Points Possible															
Students Not Tested																														
Absent	459	4													8		13		13		16		9		9					
Other	72	1													Number of Points Scored															
Total Documents Submitted	10607	100													#	%	#	%	#	%	#	%	#	%	#	%	#	%	#	%
Legend									--- = No Data Reported For Fewer Than Five Students																					
All Students									10076	3970	2955	29	7121	71	5149	51	1141	11	4.3	53	7.3	56	7.4	57	7.1	44	5.5	61	5.8	65
Male									5081	3901	1778	35	3303	65	2298	45	482	9	4.1	51	6.9	53	7.2	55	6.7	42	5.3	59	5.5	61
Female									4995	4039	1177	24	3818	76	2851	57	659	13	4.5	56	7.6	59	7.7	59	7.6	47	5.7	63	6.2	69
No Information Provided			0	---	---	---	---	---	---	---	---	---	---	---	---	---	---	---	---	---	---	---	---	---						
Hispanic/Latino			7168	3973	2042	28	5126	72	3677	51	775	11	4.2	53	7.3	56	7.4	57	7.3	45	5.5	61	5.8	65						
American Indian or Alaska Native			17	4004	3	18	14	82	11	65	0	0	4.2	53	7.3	56	8.1	62	7.3	46	5.7	63	6.2	69						
Asian			83	4305	11	13	72	87	66	80	28	34	5.1	64	8.6	66	8.8	68	9.1	57	6.7	74	7.1	79						
Black or African American			1317	3817	549	42	768	58	493	37	81	6	3.9	49	6.5	50	6.8	52	6.0	38	4.9	55	5.4	59						
Native Hawaiian or Other Pacific Islander			3	---	---	---	---	---	---	---	---	---	---	---	---	---	---	---	---	---	---	---	---	---						
White			1407	4071	327	23	1080	77	852	61	244	17	4.7	59	7.8	60	7.9	61	7.2	45	5.9	66	6.3	70						
Two or More Races			81	4019	23	28	58	72	48	59	12	15	4.4	54	7.5	58	7.9	61	7.0	44	5.7	64	5.9	66						
No Information Provided			0	---	---	---	---	---	---	---	---	---	---	---	---	---	---	---	---	---	---	---	---	---						
Economically Disadvantaged																														
			Yes	7250	3937	2280	31	4970	69	3505	48	669	9	4.1	52	7.1	55	7.3	56	7.0	44	5.4	60	5.7	63					
			No	2826	4054	675	24	2151	76	1644	58	472	17	4.6	58	7.7	59	7.8	60	7.3	46	5.8	65	6.2	69					
			No Information Provided	0	---	---	---	---	---	---	---	---	---	---	---	---	---	---	---	---	---	---	---	---	---					
Title I, Part A																														
			Participants	7798	3981	2170	28	5628	72	4066	52	888	11	4.3	53	7.3	56	7.5	57	7.3	46	5.5	61	5.8	65					
			Nonparticipants	2276	3930	784	34	1492	66	1083	48	253	11	4.3	54	7.1	54	7.3	56	6.4	40	5.4	60	5.8	64					
			No Information Provided	2	---	---	---	---	---	---	---	---	---	---	---	---	---	---	---	---	---	---	---	---	---					
Migrant																														
			Yes	144	3832	54	38	90	63	57	40	7	5	3.9	49	6.7	51	6.6	51	6.4	40	5.0	56	5.4	60					
			No	9930	3972	2899	29	7031	71	5092	51	1134	11	4.3	53	7.3	56	7.5	57	7.1	45	5.5	61	5.8	65					
			No Information Provided	2	---	---	---	---	---	---	---	---	---	---	---	---	---	---	---	---	---	---	---	---	---					
Limited English Proficient																														
			Current LEP	889	3591	577	65	312	35	137	15	3	0	2.9	37	5.4	41	5.7	44	5.1	32	3.8	43	4.4	48					
			Non-LEP (Monitored 1st Year)	109	3998	31	28	78	72	60	55	8	7	4.5	56	7.4	57	7.8	60	7.4	47	5.5	61	5.7	63					
			Non-LEP (Monitored 2nd Year)	93	4001	23	25	70	75	47	51	11	12	4.2	53	7.5	57	7.4	57	7.9	49	5.4	60	6.0	66					
			Other Non-LEP	8984	4007	2323	26	6661	74	4905	55	1119	12	4.4	55	7.5	57	7.6	59	7.3	46	5.7	63	6.0	66					
			No Information Provided	1	---	---	---	---	---	---	---	---	---	---	---	---	---	---	---	---	---	---	---	---	---					
Bilingual																														
			Participants	4	---	---	---	---	---	---	---	---	---	---	---	---	---	---	---	---	---	---	---	---	---					
			Nonparticipants	10071	3970	2953	29	7118	71	5146	51	1140	11	4.3	53	7.3	56	7.4	57	7.1	44	5.5	61	5.8	65					
			No Information Provided	1	---	---	---	---	---	---	---	---	---	---	---	---	---	---	---	---	---	---	---	---	---					
ESL																														
			Participants	871	3589	567	65	304	35	132	15	3	0	2.9	36	5.4	41	5.7	44	5.1	32	3.8	43	4.3	48					
			Nonparticipants	9204	4006	2387	26	6817	74	5017	55	1138	12	4.4	55	7.4	57	7.6	59	7.3	46	5.7	63	6.0	66					
			No Information Provided	1	---	---	---	---	---	---	---	---	---	---	---	---	---	---	---	---	---	---	---	---	---					
Special Education																														
			Yes	658	3460	524	80	134	20	57	9	4	1	2.7	33	4.6	36	4.9	38	4.1	26	3.4	38	3.7	41					
			No	9417	4005	2430	26	6987	74	5092	54	1137	12	4.4	55	7.4	57	7.6	59	7.3	46	5.6	63	6.0	67					
			No Information Provided	1	---	---	---	---	---	---	---	---	---	---	---	---	---	---	---	---	---	---	---	---	---					
Gifted/Talented																														
			Participants	739	4349	50	7	689	93	625	85	259	35	5.5	69	9.1	70	9.2	71	8.8	55	7.0	77	7.3	81					
			Nonparticipants	9335	3940	2904	31	6431	69	4523	48	882	9	4.2	52	7.1	55	7.3	56	7.0	44	5.4	60	5.7	64					
			No Information Provided	2	---	---	---	---	---	---	---	---	---	---	---	---	---	---	---	---	---	---	---	---	---					
At-Risk																														
			Yes	5206	3758	2396	46	2810	54	1584	30	144	3	3.6	45	6.2	48	6.5	50	6.0	38	4.6	52	5.0	56					
			No	4869	4196	559	11	4310	89	3564	73	997	20	5.0	63	8.4	64	8.5	65	8.3	52	6.4	71	6.7	74					
			No Information Provided	1	---	---	---	---	---	---	---	---	---	---	---	---	---	---	---	---	---	---	---	---	---					
Career/Technical Education																														
			Participants	7478	3943	2328	31	5150	69	3627	49	752	10	4.2	53	7.1	55	7.3	56	6.9	43	5.4	60	5.8	64					
			Nonparticipants	2595	4045	627	24	1968	76	1519	59	389	15	4.4	55	7.6	59	7.8	60	7.8	49	5.7	64	6.0	67					
			No Information Provided	3	---	---	---	---	---	---	---	---	---	---	---	---	---	---	---	---	---	---	---	---	---					



STATE OF TEXAS ASSESSMENTS OF ACADEMIC READINESS

Constructed Responses Summary Report

ENGLISH III

All Students

STATEWIDE

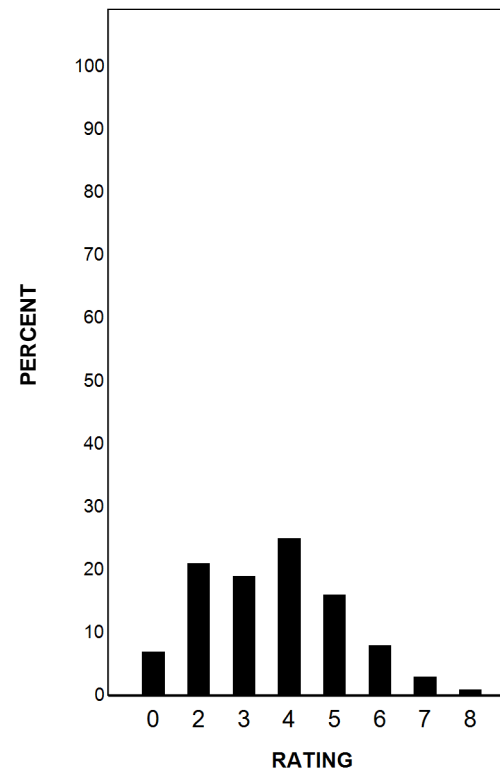
Report Date: SUMMER 2017
Date of Testing: SPRING 2017

--- = No Data Reported For Fewer Than Five Students

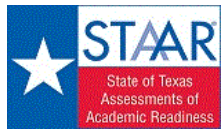
Written Composition Rating Summary

Analytical Composition

Rating	#	%
0	678	7
2	2153	21
3	1933	19
4	2513	25
5	1604	16
6	805	8
7	300	3
8	90	1
Total	10076	100



Each composition has been scored independently by two readers. The written composition rating of 0-8 represents the summation of these scores.



STATE OF TEXAS ASSESSMENTS OF ACADEMIC READINESS

Summary Report

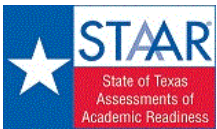
ENGLISH III

First-Time Tested Students

STATEWIDE

Report Date: SUMMER 2017
Date of Testing: SPRING 2017

Administration Summary			Number of Students Tested	Average Scale Score	Did Not Meet				Approaches				Meets				Masters				Results for Each Reporting Category											
																					1	2	3	4	5	6						
Number	Percent	Understanding/ Analysis Across Genres			Understanding/ Analysis of Literary Texts	Understanding/ Analysis of Informational Texts	Composition	Revision	Editing	Number of Points Possible																						
										8		13		13		16		9		9												
Legend		Number of Points Scored																														
--- = No Data Reported For Fewer Than Five Students		#			%	#	%	#	%	#	%	#	%	#	%	#	%	#	%	#	%	#	%	#	%							
All Students		10057			3971	2941	29	7116	71	5147	51	1141	11	4.3	53	7.3	56	7.4	57	7.1	44	5.5	61	5.8	65							
Male		5066			3902	1766	35	3300	65	2297	45	482	10	4.1	51	6.9	53	7.2	55	6.7	42	5.3	59	5.5	61							
Female		4991			4040	1175	24	3816	76	2850	57	659	13	4.5	56	7.6	59	7.7	59	7.6	47	5.7	63	6.2	69							
No Information Provided		0			---	---	---	---	---	---	---	---	---	---	---	---	---	---	---	---	---	---	---	---	---							
Hispanic/Latino		7150	3974	2029	28	5121	72	3675	51	775	11	4.2	53	7.3	56	7.5	57	7.3	45	5.5	61	5.8	65									
American Indian or Alaska Native		17	4004	3	18	14	82	11	65	0	0	4.2	53	7.3	56	8.1	62	7.3	46	5.7	63	6.2	69									
Asian		83	4305	11	13	72	87	66	80	28	34	5.1	64	8.6	66	8.8	68	9.1	57	6.7	74	7.1	79									
Black or African American		1317	3817	549	42	768	58	493	37	81	6	3.9	49	6.5	50	6.8	52	6.0	38	4.9	55	5.4	59									
Native Hawaiian or Other Pacific Islander		3	---	---	---	---	---	---	---	---	---	---	---	---	---	---	---	---	---	---	---	---	---									
White		1406	4072	326	23	1080	77	852	61	244	17	4.7	59	7.8	60	7.9	61	7.2	45	5.9	66	6.3	70									
Two or More Races		81	4019	23	28	58	72	48	59	12	15	4.4	54	7.5	58	7.9	61	7.0	44	5.7	64	5.9	66									
No Information Provided		0	---	---	---	---	---	---	---	---	---	---	---	---	---	---	---	---	---	---	---	---	---									
Economically Disadvantaged	Yes	7235	3938	2269	31	4966	69	3503	48	669	9	4.1	52	7.1	55	7.3	56	7.0	44	5.4	60	5.7	63									
	No	2822	4055	672	24	2150	76	1644	58	472	17	4.6	58	7.7	59	7.8	60	7.3	46	5.8	65	6.2	69									
	No Information Provided	0	---	---	---	---	---	---	---	---	---	---	---	---	---	---	---	---	---	---	---	---	---									
Title I, Part A	Participants	7782	3982	2158	28	5624	72	4065	52	888	11	4.3	53	7.3	56	7.5	58	7.3	46	5.5	61	5.9	65									
	Nonparticipants	2273	3930	782	34	1491	66	1082	48	253	11	4.3	54	7.1	54	7.3	56	6.4	40	5.4	60	5.8	64									
	No Information Provided	2	---	---	---	---	---	---	---	---	---	---	---	---	---	---	---	---	---	---	---	---	---									
Migrant	Yes	144	3832	54	38	90	63	57	40	7	5	3.9	49	6.7	51	6.6	51	6.4	40	5.0	56	5.4	60									
	No	9911	3973	2885	29	7026	71	5090	51	1134	11	4.3	53	7.3	56	7.5	57	7.1	45	5.5	61	5.8	65									
	No Information Provided	2	---	---	---	---	---	---	---	---	---	---	---	---	---	---	---	---	---	---	---	---	---									
Limited English Proficient	Current LEP	885	3590	575	65	310	35	137	15	3	0	2.9	37	5.4	41	5.7	44	5.1	32	3.8	43	4.3	48									
	Non-LEP (Monitored 1st Year)	109	3998	31	28	78	72	60	55	8	7	4.5	56	7.4	57	7.8	60	7.4	47	5.5	61	5.7	63									
	Non-LEP (Monitored 2nd Year)	93	4001	23	25	70	75	47	51	11	12	4.2	53	7.5	57	7.4	57	7.9	49	5.4	60	6.0	66									
	Other Non-LEP	8969	4007	2311	26	6658	74	4903	55	1119	12	4.4	55	7.5	57	7.6	59	7.3	46	5.7	63	6.0	67									
	No Information Provided	1	---	---	---	---	---	---	---	---	---	---	---	---	---	---	---	---	---	---	---	---	---									
Bilingual	Participants	4	---	---	---	---	---	---	---	---	---	---	---	---	---	---	---	---	---	---	---	---	---									
	Nonparticipants	10052	3971	2939	29	7113	71	5144	51	1140	11	4.3	53	7.3	56	7.4	57	7.1	44	5.5	61	5.8	65									
	No Information Provided	1	---	---	---	---	---	---	---	---	---	---	---	---	---	---	---	---	---	---	---	---	---									
ESL	Participants	867	3589	565	65	302	35	132	15	3	0	2.9	37	5.4	41	5.7	43	5.1	32	3.8	43	4.3	48									
	Nonparticipants	9189	4007	2375	26	6814	74	5015	55	1138	12	4.4	55	7.4	57	7.6	59	7.3	46	5.7	63	6.0	66									
	No Information Provided	1	---	---	---	---	---	---	---	---	---	---	---	---	---	---	---	---	---	---	---	---	---									
Special Education	Yes	654	3458	522	80	132	20	57	9	4	1	2.7	34	4.6	36	4.9	38	4.1	26	3.4	37	3.7	41									
	No	9402	4006	2418	26	6984	74	5090	54	1137	12	4.4	55	7.5	57	7.6	59	7.3	46	5.6	63	6.0	67									
	No Information Provided	1	---	---	---	---	---	---	---	---	---	---	---	---	---	---	---	---	---	---	---	---	---									
Gifted/Talented	Participants	739	4349	50	7	689	93	625	85	259	35	5.5	69	9.1	70	9.2	71	8.8	55	7.0	77	7.3	81									
	Nonparticipants	9316	3941	2890	31	6426	69	4521	49	882	9	4.2	52	7.1	55	7.3	56	7.0	44	5.4	60	5.7	64									
	No Information Provided	2	---	---	---	---	---	---	---	---	---	---	---	---	---	---	---	---	---	---	---	---	---									
At-Risk	Yes	5191	3759	2384	46	2807	54	1583	30	144	3	3.6	45	6.2	48	6.5	50	6.0	38	4.6	52	5.0	56									
	No	4865	4196	557	11	4308	89	3563	73	997	20	5.0	63	8.4	64	8.5	65	8.3	52	6.4	71	6.7	74									
	No Information Provided	1	---	---	---	---	---	---	---	---	---	---	---	---	---	---	---	---	---	---	---	---	---									
Career/Technical Education	Participants	7465	3944	2319	31	5146	69	3626	49	752	10	4.2	53	7.1	55	7.3	56	6.9	43	5.4	60	5.8	64									
	Nonparticipants	2589	4047	622	24	1967	76	1518	59	389	15	4.4	55	7.6	59	7.8	60	7.8	49	5.7	64	6.0	67									
	No Information Provided	3	---	---	---	---	---	---	---	---	---	---	---	---	---	---	---	---	---	---	---	---	---									



STATE OF TEXAS ASSESSMENTS OF ACADEMIC READINESS
Constructed Responses Summary Report
ENGLISH III
First-Time Tested Students

STATEWIDE

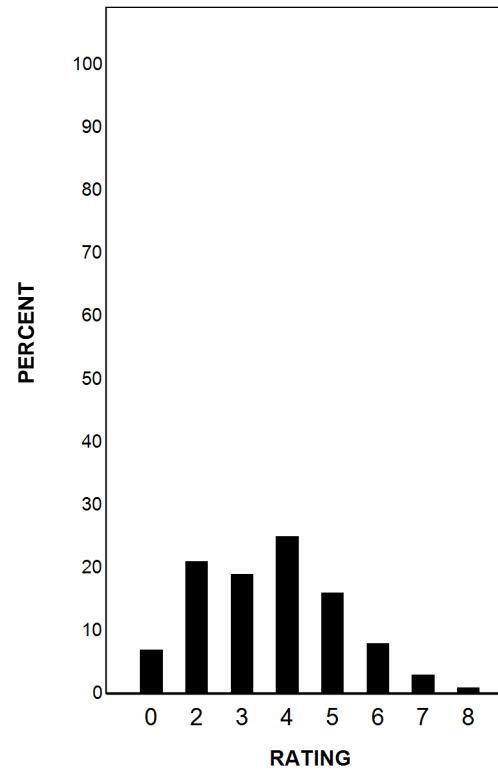
Report Date: SUMMER 2017
Date of Testing: SPRING 2017

--- = No Data Reported For Fewer Than Five Students

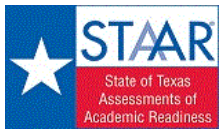
Written Composition Rating Summary

Analytical Composition

Rating	#	%
0	674	7
2	2145	21
3	1931	19
4	2510	25
5	1602	16
6	805	8
7	300	3
8	90	1
Total	10057	100



Each composition has been scored independently by two readers. The written composition rating of 0-8 represents the summation of these scores.



STATE OF TEXAS ASSESSMENTS OF ACADEMIC READINESS

Summary Report

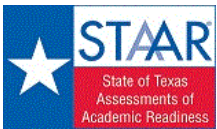
ENGLISH III

Retested Students

STATEWIDE

Report Date: SUMMER 2017
Date of Testing: SPRING 2017

Administration Summary			Number of Students Tested	Average Scale Score	Results for Each Reporting Category																		
					Did Not Meet		Approaches		Meets		Masters		1		2		3		4		5		6
Number	Percent		#	%	#	%	#	%	#	%	#	%	#	%	#	%	#	%	#	%	#	%	
Legend																							
--- = No Data Reported For Fewer Than Five Students																							
Students Tested	19	68																					
Students Not Tested																							
Absent	9	32																					
Other	0	0																					
Total Documents Submitted	28	100																					
Number of Points Possible																							
8 13 13 16 9 9																							
Number of Points Scored																							
# % # % # % # % # %																							
All Students	19	3551	14	74	5	26	2	11	0	0	2.3	28	5.0	38	5.9	46	4.6	29	3.7	42	4.7	53	
Male	15	3529	12	80	3	20	1	7	0	0	2.1	27	5.0	38	5.8	45	4.8	30	3.4	38	4.6	51	
Female	4	---	---	---	---	---	---	---	---	---	---	---	---	---	---	---	---	---	---	---	---	---	
No Information Provided	0	---	---	---	---	---	---	---	---	---	---	---	---	---	---	---	---	---	---	---	---	---	
Hispanic/Latino	18	3557	13	72	5	28	2	11	0	0	2.3	28	5.1	39	5.9	46	4.7	29	3.8	43	4.7	52	
American Indian or Alaska Native	0	---	---	---	---	---	---	---	---	---	---	---	---	---	---	---	---	---	---	---	---	---	
Asian	0	---	---	---	---	---	---	---	---	---	---	---	---	---	---	---	---	---	---	---	---	---	
Black or African American	0	---	---	---	---	---	---	---	---	---	---	---	---	---	---	---	---	---	---	---	---	---	
Native Hawaiian or Other Pacific Islander	0	---	---	---	---	---	---	---	---	---	---	---	---	---	---	---	---	---	---	---	---	---	
White	1	---	---	---	---	---	---	---	---	---	---	---	---	---	---	---	---	---	---	---	---	---	
Two or More Races	0	---	---	---	---	---	---	---	---	---	---	---	---	---	---	---	---	---	---	---	---	---	
No Information Provided	0	---	---	---	---	---	---	---	---	---	---	---	---	---	---	---	---	---	---	---	---	---	
Economically Disadvantaged	Yes	15	3534	11	73	4	27	2	13	0	0	2.2	28	5.2	40	5.8	45	4.8	30	3.7	41	4.4	49
	No	4	---	---	---	---	---	---	---	---	---	---	---	---	---	---	---	---	---	---	---	---	---
	No Information Provided	0	---	---	---	---	---	---	---	---	---	---	---	---	---	---	---	---	---	---	---	---	---
Title I, Part A	Participants	16	3536	12	75	4	25	1	6	0	0	2.3	28	5.1	39	5.6	43	4.6	29	3.8	42	4.6	51
	Nonparticipants	3	---	---	---	---	---	---	---	---	---	---	---	---	---	---	---	---	---	---	---	---	---
	No Information Provided	0	---	---	---	---	---	---	---	---	---	---	---	---	---	---	---	---	---	---	---	---	---
Migrant	Yes	0	---	---	---	---	---	---	---	---	---	---	---	---	---	---	---	---	---	---	---	---	---
	No	19	3551	14	74	5	26	2	11	0	0	2.3	28	5.0	38	5.9	46	4.6	29	3.7	42	4.7	53
	No Information Provided	0	---	---	---	---	---	---	---	---	---	---	---	---	---	---	---	---	---	---	---	---	---
Limited English Proficient	Current LEP	4	---	---	---	---	---	---	---	---	---	---	---	---	---	---	---	---	---	---	---	---	---
	Non-LEP (Monitored 1st Year)	0	---	---	---	---	---	---	---	---	---	---	---	---	---	---	---	---	---	---	---	---	---
	Non-LEP (Monitored 2nd Year)	0	---	---	---	---	---	---	---	---	---	---	---	---	---	---	---	---	---	---	---	---	---
	Other Non-LEP	15	3509	12	80	3	20	2	13	0	0	2.4	30	5.1	39	5.7	44	3.9	24	3.6	40	4.5	50
	No Information Provided	0	---	---	---	---	---	---	---	---	---	---	---	---	---	---	---	---	---	---	---	---	---
Bilingual	Participants	0	---	---	---	---	---	---	---	---	---	---	---	---	---	---	---	---	---	---	---	---	---
	Nonparticipants	19	3551	14	74	5	26	2	11	0	0	2.3	28	5.0	38	5.9	46	4.6	29	3.7	42	4.7	53
	No Information Provided	0	---	---	---	---	---	---	---	---	---	---	---	---	---	---	---	---	---	---	---	---	---
ESL	Participants	4	---	---	---	---	---	---	---	---	---	---	---	---	---	---	---	---	---	---	---	---	---
	Nonparticipants	15	3509	12	80	3	20	2	13	0	0	2.4	30	5.1	39	5.7	44	3.9	24	3.6	40	4.5	50
	No Information Provided	0	---	---	---	---	---	---	---	---	---	---	---	---	---	---	---	---	---	---	---	---	---
Special Education	Yes	4	---	---	---	---	---	---	---	---	---	---	---	---	---	---	---	---	---	---	---	---	---
	No	15	3526	12	80	3	20	2	13	0	0	2.3	29	5.2	40	5.6	43	4.3	27	3.8	42	4.5	50
	No Information Provided	0	---	---	---	---	---	---	---	---	---	---	---	---	---	---	---	---	---	---	---	---	---
Gifted/Talented	Participants	0	---	---	---	---	---	---	---	---	---	---	---	---	---	---	---	---	---	---	---	---	---
	Nonparticipants	19	3551	14	74	5	26	2	11	0	0	2.3	28	5.0	38	5.9	46	4.6	29	3.7	42	4.7	53
	No Information Provided	0	---	---	---	---	---	---	---	---	---	---	---	---	---	---	---	---	---	---	---	---	---
At-Risk	Yes	15	3509	12	80	3	20	1	7	0	0	2.1	26	4.9	37	5.5	43	4.5	28	3.8	42	4.4	49
	No	4	---	---	---	---	---	---	---	---	---	---	---	---	---	---	---	---	---	---	---	---	---
	No Information Provided	0	---	---	---	---	---	---	---	---	---	---	---	---	---	---	---	---	---	---	---	---	---
Career/Technical Education	Participants	13	3560	9	69	4	31	1	8	0	0	1.8	23	4.8	37	6.3	49	5.2	33	3.8	42	4.6	51
	Nonparticipants	6	3530	5	83	1	17	1	17	0	0	3.2	40	5.3	41	5.2	40	3.3	21	3.7	41	5.0	56
	No Information Provided	0	---	---	---	---	---	---	---	---	---	---	---	---	---	---	---	---	---	---	---	---	---



STATE OF TEXAS ASSESSMENTS OF ACADEMIC READINESS
Constructed Responses Summary Report
ENGLISH III
Retested Students

STATEWIDE

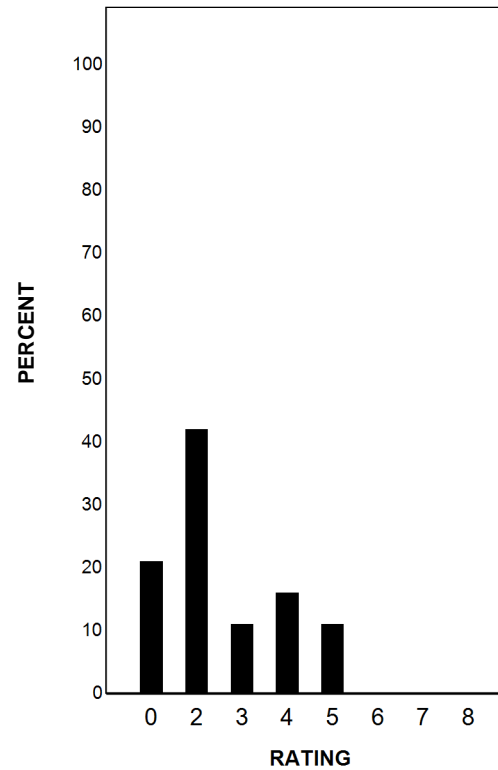
Report Date: SUMMER 2017
Date of Testing: SPRING 2017

--- = No Data Reported For Fewer Than Five Students

Written Composition Rating Summary

Analytical Composition

Rating	#	%
0	4	21
2	8	42
3	2	11
4	3	16
5	2	11
6	0	0
7	0	0
8	0	0
Total	19	100



Each composition has been scored independently by two readers. The written composition rating of 0-8 represents the summation of these scores.



STATE OF TEXAS ASSESSMENTS OF ACADEMIC READINESS

Summary Report

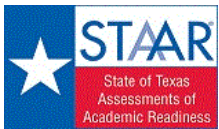
ALGEBRA II

First-Time Tested Students

STATEWIDE

Report Date: SPRING 2016
Date of Testing: SPRING 2016

Administration Summary			Number of Students Tested	Average Scale Score	PASSED				DID NOT PASS		Results for Each Reporting Category											
					Level II: Satisfactory		Level III: Advanced		Level I: Unsatisfactory				1		2		3		4		5	
Number		Percent																				
Students Tested	14252	93																				
Students Not Tested																						
Absent	1107	7																				
Other	17	0																				
Total Documents Submitted	15376	100																				
Legend			--- = No Data Reported For Fewer Than Five Students																			
Number of Items Tested																						
		9		8		7		10		6		10										
Avg. # of Items / % Correct																						
		#	%	#	%	#	%	#	%	#	%	#	%	#	%	#	%	#	%	#	%	
All Students		14252	3912	11265	79	2532	18	2987	21	5.2	58	4.1	51	3.8	55	5.4	54	3.3	55	5.1	51	
Male		7056	3908	5491	78	1318	19	1565	22	5.2	58	4.1	52	3.7	54	5.3	53	3.3	56	5.1	51	
Female		7193	3917	5772	80	1214	17	1421	20	5.2	58	4.1	51	3.9	56	5.4	54	3.3	55	5.2	52	
No Information Provided		3	---	---	---	---	---	---	---	---	---	---	---	---	---	---	---	---	---	---	---	
Hispanic/Latino		8787	3874	6751	77	1408	16	2036	23	5.0	56	4.0	50	3.8	54	5.2	52	3.2	53	5.0	50	
American Indian or Alaska Native		52	3875	38	73	8	15	14	27	5.2	58	4.6	57	3.6	51	5.2	52	3.0	50	4.9	49	
Asian		273	4383	252	92	134	49	21	8	6.6	73	5.4	68	4.9	70	7.2	72	4.3	71	6.8	68	
Black or African American		1082	3735	731	68	97	9	351	32	4.5	50	3.5	44	3.5	49	4.6	46	2.8	47	4.5	45	
Native Hawaiian or Other Pacific Islander		13	4070	12	92	2	15	1	8	5.8	65	4.9	62	4.6	66	5.7	57	4.1	68	5.6	56	
White		3857	4015	3325	86	852	22	532	14	5.7	63	4.4	55	4.0	57	5.9	59	3.6	60	5.5	55	
Two or More Races		183	3944	153	84	30	16	30	16	5.3	59	4.1	51	3.9	56	5.4	54	3.4	56	5.3	53	
No Information Provided		5	3889	3	60	1	20	2	40	5.4	60	4.0	50	4.2	60	5.0	50	3.0	50	4.8	48	
Economically Disadvantaged	Yes	7988	3845	5957	75	1191	15	2031	25	4.9	55	3.9	49	3.7	53	5.1	51	3.1	52	4.9	49	
	No	6263	3998	5307	85	1340	21	956	15	5.6	62	4.3	54	4.0	57	5.8	58	3.5	59	5.5	55	
	No Information Provided	1	---	---	---	---	---	---	---	---	---	---	---	---	---	---	---	---	---	---	---	
Title I, Part A	Participants	8491	3873	6422	76	1395	16	2069	24	5.0	56	4.0	50	3.8	55	5.2	52	3.2	53	4.9	49	
	Nonparticipants	5760	3971	4842	84	1136	20	918	16	5.5	61	4.3	53	3.9	55	5.7	57	3.5	58	5.4	54	
	No Information Provided	1	---	---	---	---	---	---	---	---	---	---	---	---	---	---	---	---	---	---	---	
Migrant	Yes	145	3683	89	61	15	10	56	39	4.2	47	3.4	43	3.3	47	4.4	44	2.6	44	4.3	43	
	No	14105	3915	11175	79	2516	18	2930	21	5.2	58	4.1	51	3.9	55	5.4	54	3.3	55	5.1	51	
	No Information Provided	2	---	---	---	---	---	---	---	---	---	---	---	---	---	---	---	---	---	---	---	
Limited English Proficient	Current LEP	848	3612	472	56	61	7	376	44	4.1	45	3.3	41	3.0	43	4.1	41	2.5	42	4.0	40	
	Non-LEP (Monitored 1st Year)	141	3995	126	89	31	22	15	11	5.6	62	4.1	51	4.1	59	5.7	57	3.6	60	5.3	53	
	Non-LEP (Monitored 2nd Year)	169	3839	129	76	26	15	40	24	4.9	55	3.8	47	3.7	53	5.1	51	3.0	51	5.0	50	
	Other Non-LEP	13093	3932	10537	80	2413	18	2556	20	5.3	59	4.1	52	3.9	56	5.5	55	3.4	56	5.2	52	
	No Information Provided	1	---	---	---	---	---	---	---	---	---	---	---	---	---	---	---	---	---	---	---	
Bilingual	Participants	1	---	---	---	---	---	---	---	---	---	---	---	---	---	---	---	---	---	---	---	
	Nonparticipants	14248	3912	11262	79	2530	18	2986	21	5.2	58	4.1	51	3.8	55	5.4	54	3.3	55	5.1	51	
	No Information Provided	3	---	---	---	---	---	---	---	---	---	---	---	---	---	---	---	---	---	---	---	
ESL	Participants	839	3626	473	56	67	8	366	44	4.1	46	3.3	41	3.1	44	4.1	41	2.5	42	4.0	40	
	Nonparticipants	13411	3930	10790	80	2463	18	2621	20	5.3	58	4.1	52	3.9	56	5.5	55	3.4	56	5.2	52	
	No Information Provided	2	---	---	---	---	---	---	---	---	---	---	---	---	---	---	---	---	---	---	---	
Special Education	Yes	401	3478	170	42	12	3	231	58	3.5	39	3.0	38	2.5	36	3.3	33	2.2	37	3.5	35	
	No	13850	3925	11094	80	2519	18	2756	20	5.2	58	4.1	51	3.9	55	5.4	54	3.3	56	5.2	52	
	No Information Provided	1	---	---	---	---	---	---	---	---	---	---	---	---	---	---	---	---	---	---	---	
Gifted/Talented	Participants	1334	4355	1251	94	636	48	83	6	6.6	73	5.4	68	5.0	71	7.1	71	4.2	70	6.7	67	
	Nonparticipants	12917	3867	10013	78	1895	15	2904	22	5.1	56	3.9	49	3.7	53	5.2	52	3.2	54	5.0	50	
	No Information Provided	1	---	---	---	---	---	---	---	---	---	---	---	---	---	---	---	---	---	---	---	
At-Risk	Yes	5579	3653	3593	64	304	5	1986	36	4.3	48	3.4	42	3.1	45	4.2	42	2.7	45	4.2	42	
	No	8670	4079	7669	88	2227	26	1001	12	5.8	64	4.6	57	4.3	61	6.1	61	3.7	62	5.7	57	
	No Information Provided	3	---	---	---	---	---	---	---	---	---	---	---	---	---	---	---	---	---	---	---	
Career/Technical Education	Participants	9425	3861	7225	77	1404	15	2200	23	5.0	56	3.9	49	3.7	53	5.2	52	3.2	53	4.9	49	
	Nonparticipants	4826	4013	4039	84	1127	23	787	16	5.6	62	4.4	55	4.2	59	5.8	58	3.5	59	5.5	55	
	No Information Provided	1	---	---	---	---	---	---	---	---	---	---	---	---	---	---	---	---	---	---	---	



STATEWIDE

STATE OF TEXAS ASSESSMENTS OF ACADEMIC READINESS
Summary Report
ALGEBRA II
First-Time Tested Students

Report Date: SPRING 2017
Date of Testing: SPRING 2017

Table with columns: Administration Summary, Number of Students Tested, Average Scale Score, Did Not Meet, Approaches, Meets, Masters, Results for Each Reporting Category (1-6), and Avg. # of Items / % Correct. Rows include categories like All Students, Male/Female, Hispanic/Latino, and various demographic groups.



STATE OF TEXAS ASSESSMENTS OF ACADEMIC READINESS

Summary Report

ALGEBRA II

Retested Students

STATEWIDE

Report Date: SPRING 2017
Date of Testing: SPRING 2017

Administration Summary			Number of Students Tested	Average Scale Score	Results for Each Reporting Category																	
					Number		1		2		3		4		5		6					
Percent	Number and Algebraic Methods				Describing and Graphing Functions and Their Inverses		Writing and Solving Systems of Equations and Inequalities		Quadratic and Square Root Functions, Equations, and Inequalities		Exponential and Logarithmic Functions and Equations		Other Functions, Equations, and Inequalities									
Students Tested	Number of Items Tested								Avg. # of Items / % Correct													
Students Not Tested	9				8		7		10		6		10									
Absent	#	%	#	%	#	%	#	%	#	%	#	%	#	%	#	%						
Other	Other	Other	Other	Other	Other	Other	Other	Other	Other	Other	Other	Other	Other	Other	Other	Other						
Total Documents Submitted	Legend																					
70	--- = No Data Reported For Fewer Than Five Students																					
100																						
All Students	63	3840	17	27	46	73	24	38	7	11	5.0	56	3.5	44	3.3	47	5.5	55	3.2	54	5.3	53
Male	40	3841	11	28	29	73	15	38	5	13	5.1	56	3.6	45	3.3	46	5.5	55	3.4	56	5.3	53
Female	23	3838	6	26	17	74	9	39	2	9	5.0	56	3.5	43	3.4	49	5.7	57	3.0	50	5.3	53
No Information Provided	0																					
Hispanic/Latino	56	3778	16	29	40	71	20	36	5	9	4.9	55	3.4	43	3.3	47	5.3	53	3.2	53	5.0	50
American Indian or Alaska Native	0																					
Asian	1																					
Black or African American	3																					
Native Hawaiian or Other Pacific Islander	0																					
White	3																					
Two or More Races	0																					
No Information Provided	0																					
Economically Disadvantaged																						
Yes	53	3828	13	25	40	75	20	38	5	9	5.1	56	3.5	44	3.4	49	5.4	54	3.2	53	5.2	52
No	10	3903	4	40	6	60	4	40	2	20	5.0	56	3.6	45	2.8	40	6.0	60	3.4	57	5.8	58
No Information Provided	0																					
Title I, Part A																						
Participants	59	3805	16	27	43	73	23	39	6	10	5.0	56	3.5	43	3.3	47	5.4	54	3.2	53	5.3	53
Nonparticipants	4																					
No Information Provided	0																					
Migrant																						
Yes	2																					
No	61	3890	15	25	46	75	24	39	7	11	5.1	57	3.6	45	3.4	49	5.6	56	3.3	55	5.4	54
No Information Provided	0																					
Limited English Proficient																						
Current LEP	6	3891	1	17	5	83	2	33	1	17	5.3	59	3.8	48	3.5	50	5.7	57	3.7	61	5.2	52
Non-LEP (Monitored 1st Year)	0																					
Non-LEP (Monitored 2nd Year)	2																					
Other Non-LEP	55	3847	15	27	40	73	22	40	6	11	5.1	56	3.5	44	3.3	47	5.5	55	3.2	54	5.4	54
No Information Provided	0																					
Bilingual																						
Participants	0																					
Nonparticipants	63	3840	17	27	46	73	24	38	7	11	5.0	56	3.5	44	3.3	47	5.5	55	3.2	54	5.3	53
No Information Provided	0																					
ESL																						
Participants	6	3891	1	17	5	83	2	33	1	17	5.3	59	3.8	48	3.5	50	5.7	57	3.7	61	5.2	52
Nonparticipants	57	3834	16	28	41	72	22	39	6	11	5.0	56	3.5	44	3.3	47	5.5	55	3.2	53	5.3	53
No Information Provided	0																					
Special Education																						
Yes	1																					
No	62	3851	16	26	46	74	24	39	7	11	5.1	56	3.6	45	3.4	48	5.5	55	3.3	54	5.4	54
No Information Provided	0																					
Gifted/Talented																						
Participants	3																					
Nonparticipants	60	3826	17	28	43	72	22	37	6	10	5.0	55	3.5	44	3.3	47	5.5	55	3.2	53	5.2	52
No Information Provided	0																					
At-Risk																						
Yes	45	3711	15	33	30	67	13	29	4	9	4.6	52	3.3	41	3.0	43	5.1	51	2.9	49	4.9	49
No	18	4163	2	11	16	89	11	61	3	17	6.1	67	4.2	52	4.1	58	6.6	66	3.9	66	6.2	62
No Information Provided	0																					
Career/Technical Education																						
Participants	36	3759	12	33	24	67	12	33	4	11	4.7	52	3.3	41	2.9	42	5.3	53	3.1	52	5.0	50
Nonparticipants	27	3948	5	19	22	81	12	44	3	11	5.5	61	3.9	49	3.8	54	5.8	58	3.3	56	5.7	57
No Information Provided	0																					