

# Targeted Assistance Program – Selection Criteria

**2024-2025 Program Monitoring Validation  
Federal Program Compliance Division**

# Title I, Part A Program Requirement Selected



Documenting overall compliance for a program requirement may require several forms of documentation to be maintained locally and available upon request by TEA and/or an auditor.

# Title I, Part A Program Requirement Selected



To ensure overall compliance with program requirements, LEAs should refer to the Program Guide and/or other program-related resources that reference the multiple forms of documentation required to be maintained locally.

# Title I, Part A Program Requirement Selected



The documentation requested for submission during the program monitoring validation process may not include all forms of documentation that are required to be maintained locally.

# Title I, Part A Program Requirement

## Targeted Assistance Program – Student Selection Criteria

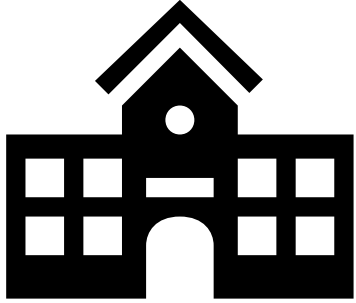
ELIGIBLE POPULATION.— (A) IN GENERAL.—The eligible population for services under this section is—

- (i) children not older than age 21 who are entitled to a free public education through grade 12; and
- (ii) children who are not yet at a grade level at which the local educational agency provides a free public education.

ELIGIBLE CHILDREN FROM ELIGIBLE POPULATION.—

From the population described in subparagraph (A), eligible children are children identified by the school as failing, or most at risk of failing, to meet the challenging State academic standards on the basis of multiple, educationally related, objective criteria established by the local educational agency and supplemented by the school, except that children from preschool through grade 2 shall be selected solely on the basis of criteria, including objective criteria, established by the local educational agency and supplemented by the school. [Section 1115(c)(1)(B)]

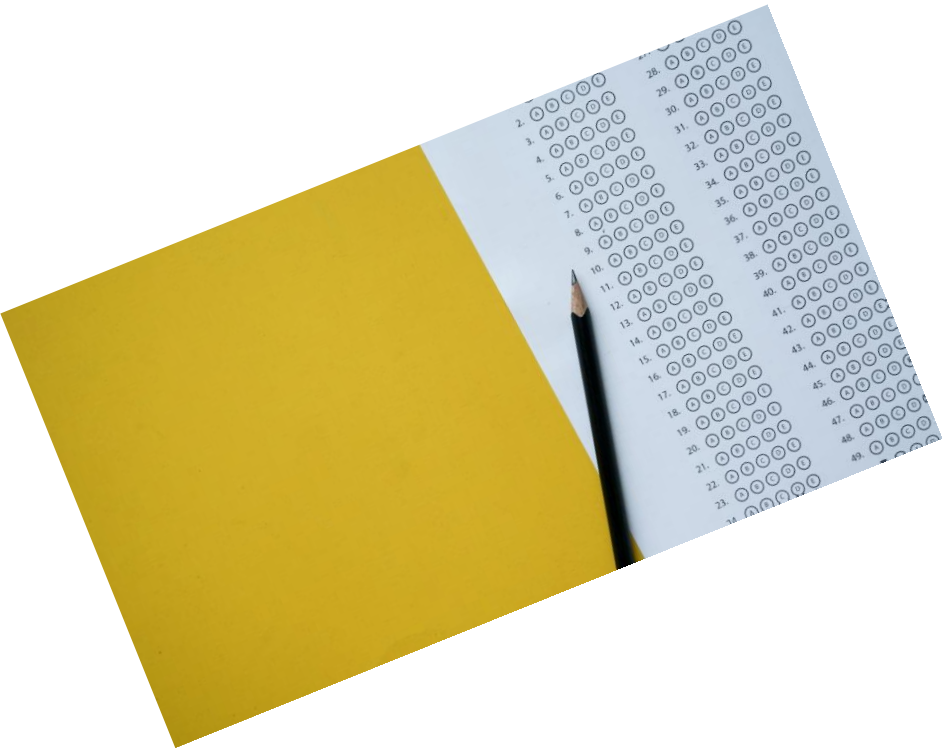
# Targeted Assistance Program Participants



Only students identified as most at risk of failing to meet state academic standards.

- Not whole school
- Not whole grade level

# Student Selection Criteria Set by LEA

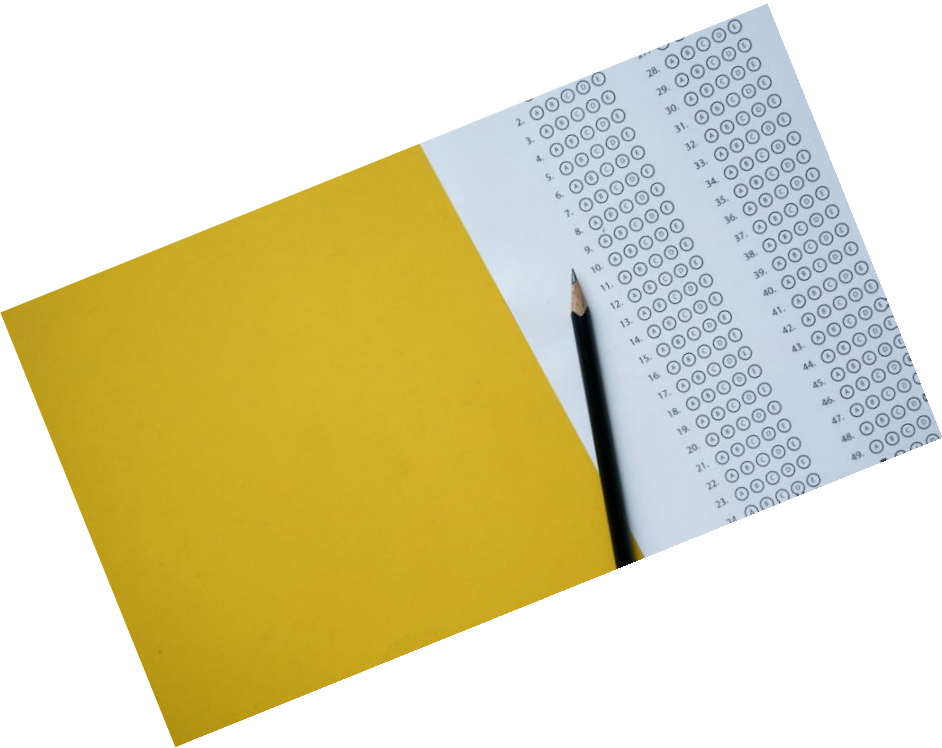


Multiple, educationally related, objective

- More than one assessment
  - STAAR Reading
  - STAAR Math
  - End-of-Course
- For PK-2, multiple criteria (developmentally appropriate; may include teacher judgment, parent interviews, checklists)

Examples Only

# Supplemented by the Campus



Use LEA's selection criteria.

- Campus may choose to supplement the LEA's criteria (include in Campus Improvement Plan)
- Create one list of students based on the multiple criteria so that campus serves those students most in need of assistance.



## ***Documentation Required – Selection Criteria Item 1.1***

Evidence of the LEA's Selection Criteria.



### ***Acceptable Documentation***

- Relevant pages from the LEA's District Improvement Plan describing the LEA's selection criteria (the criteria must be multiple, educationally related, objective criteria, except that children in preschool through grade 2 shall be selected solely on the basis of criteria, including objective criteria established by the LEA which may include teacher judgment, interviews with parents, or other developmentally appropriate measures); AND
- Relevant pages from the Campus Improvement Plan describing how the campus has supplemented the LEA's criteria, if applicable



## ***Documentation Required – Selection Criteria Item 1.1***

Evidence of the LEA's Selection Criteria.



### ***Issues that may result in an “Improvement Needed” status***

- Auditable documentation was not submitted.
- Documentation submitted does not reflect the use of multiple, educationally related objective criteria for grades 3 – 12 .
- Documentation submitted does not reflect developmentally appropriate criteria for grades PK – 2, if those grades are included in the LEA's Targeted Assistance program(s).
- Documentation is not for the school year specified in the validation.



# Contact Information



**Vivian Smyrl**  
Program Director – Title I, Part A



**Desk Phone Number**  
(512) 936-6216



**Email Address**  
[Vivian.Smyrl@TEA.Texas.gov](mailto:Vivian.Smyrl@TEA.Texas.gov)

**Division Phone Number:** (512) 463-9499

**Division Email Address:** [ESSASupport@TEA.Texas.gov](mailto:ESSASupport@TEA.Texas.gov)