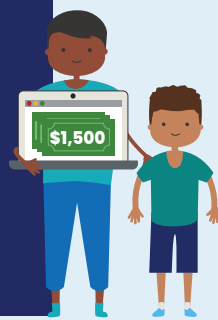




Program Overview: Parent-Directed Special Education Services (PDESES)



The 2025-2026
school year
application
window opens:



What is PDESES?


PDESES provides a **\$1,500 one-time grant** to parents of students who are both enrolled in a Texas public school and receive special education services. Parents can use PDESES grant funds to purchase educational goods and services for their student on the online marketplace.

How do I apply?

Parents can only apply during the annual application window. You must have a My SPEDTex account in order to apply when the application opens. You can create a My SPEDTex account on the [SPEDTex website](#) at any time. Learn more about the [application process](#) on the PDESES website.

Where can I get more information or help?

 PDESESHelp@Region10.org

 1-855-773-3839

 PDESES.TEA.TEXAS.GOV



Sign up for [PDESES email updates](#)

Who is eligible?

To be eligible for a PDESES grant, students must:

- be currently enrolled in a Texas public school (grades PK-12th),
- receive special education services through an individualized education program (IEP), **and**
- have **NOT** received a Supplemental Special Education Services (SSES) or PDESES grant in the past – PDESES is a **one-time only grant**.



What can we purchase?



With PDESES accounts, parents are able to purchase educational goods and services from the PDESES online marketplace.

Educational goods such as:

Books	Tablets	Sensory Items
Laptops	School Supplies	Therapeutic Items
Headphones	Education Games	Printers

Services such as:

Tutoring	Social Skills	Counseling
Therapy	Camps	Adaptive Fitness

This is a first come, first served grant. If you believe your student is eligible, we encourage you to apply when the application opens.