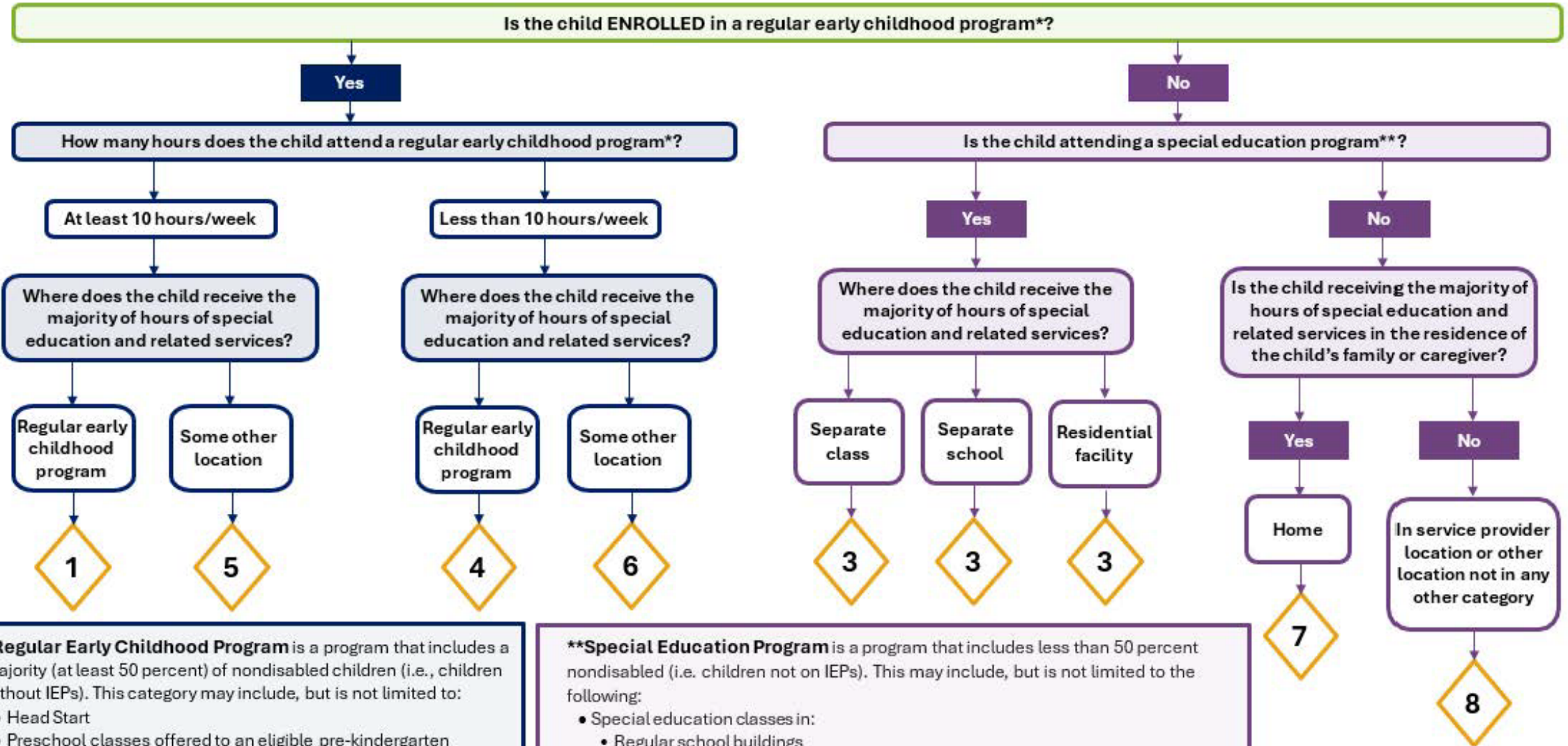


Decision Tree for Reporting Preschool Educational Environments (updated October 2024)



***Regular Early Childhood Program** is a program that includes a majority (at least 50 percent) of nondisabled children (i.e., children without IEPs). This category may include, but is not limited to:

- Head Start
- Preschool classes offered to an eligible pre-kindergarten population by the public school system
- Private preschools
- Group child development center or childcare

****Special Education Program** is a program that includes less than 50 percent nondisabled (i.e. children not on IEPs). This may include, but is not limited to the following:

- Special education classes in:
 - Regular school buildings
 - Trailers/portables outside regular school buildings
 - Childcare facilities
 - Hospital facilities on an outpatient basis
 - Other community-based settings (Separate schools, Residential facilities)

Texas PEIMS Codes

Decision Tree for Reporting Preschool Educational Environments Decision Paths

Path One

- Is the child enrolled in a regular early childhood program?
- Yes
- How many hours does the child attend a regular early childhood program?
- At least 10 hours/week
- Where does the child receive the majority of hours of special education and related services?
- Regular early childhood program*
- Code 1

Path Two

- Is the child enrolled in a regular early childhood program?
- Yes
- How many hours does the child attend a regular early childhood program?
- At least 10 hours/week
- Where does the child receive the majority of hours of special education and related services?
- Some other location
- Code 5

Path Three

- Is the child enrolled in a regular early childhood program?
- Yes
- How many hours does the child attend a regular early childhood program?
- Less than 10 hours/week
- Where does the child receive the majority of hours of special education and related services?
- Regular early childhood program*
- Code 4

Path Four

- Is the child enrolled in a regular early childhood program?
- Yes
- How many hours does the child attend a regular early childhood program?
- Less than 10 hours/week
- Where does the child receive the majority of hours of special education and related services?

Texas PEIMS Codes

- Some other location
- Code 6

Path Five

- Is the child enrolled in a regular early childhood program?
- No
- Is the child attending a special education program?
- Yes
- Where does the child receive the majority of hours of special education and related services?
- Separate class**
- Code 3

Path Six

- Is the child enrolled in a regular early childhood program?
- No
- Is the child attending a special education program?
- Yes
- Where does the child receive the majority of hours of special education and related services?
- Separate school
- Code 3

Path Seven

- Is the child enrolled in a regular early childhood program?
- No
- Is the child attending a special education program?
- Yes
- Where does the child receive the majority of hours of special education and related services?
- Residential facility
- Code 3

Path Eight

- Is the child enrolled in a regular early childhood program?
- No
- Is the child attending a special education program?
- No
- Is the child receiving the majority of special education and related services in the residence of the child's family or caregiver?
- Yes

Texas PEIMS Codes

- Home
- Code 7

Path Nine

- Is the child enrolled in a regular early childhood program?
- No
- Is the child attending a special education program?
- No
- Is the child receiving the majority of special education and related services in the residence of the child's family or caregiver?
- No
- In service provider location or other location not in any other category
- Code 8