

TSDS Child Find Collection: SPPI 11A/B Flowchart

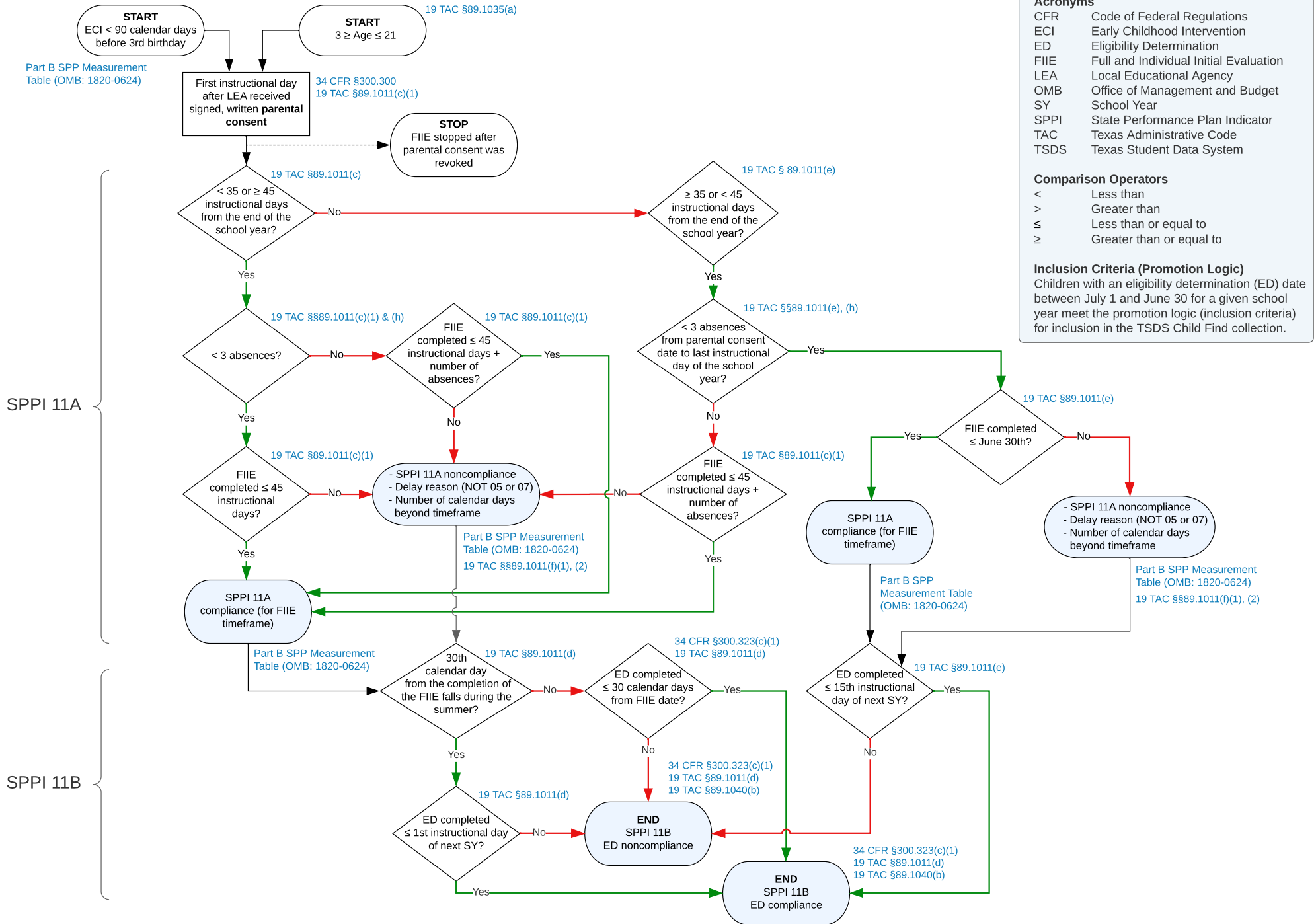
Acronyms

- CFR Code of Federal Regulations
- ECI Early Childhood Intervention
- ED Eligibility Determination
- FIIE Full and Individual Initial Evaluation
- LEA Local Educational Agency
- OMB Office of Management and Budget
- SY School Year
- SPPI State Performance Plan Indicator
- TAC Texas Administrative Code
- TSDS Texas Student Data System

Comparison Operators

- < Less than
- > Greater than
- ≤ Less than or equal to
- ≥ Greater than or equal to

Inclusion Criteria (Promotion Logic)
 Children with an eligibility determination (ED) date between July 1 and June 30 for a given school year meet the promotion logic (inclusion criteria) for inclusion in the TSDS Child Find collection.



Compliance / Noncompliance Matrix

		SPPI 11A Full and Individual Initial Evaluation (FIIE)	
SPPI 11B Eligibility Determination (ED)		Compliance	Noncompliance
	Compliance	Compliance/ Compliance	Noncompliance/ Compliance
	Noncompliance	Compliance/ Noncompliance	Noncompliance/ Noncompliance