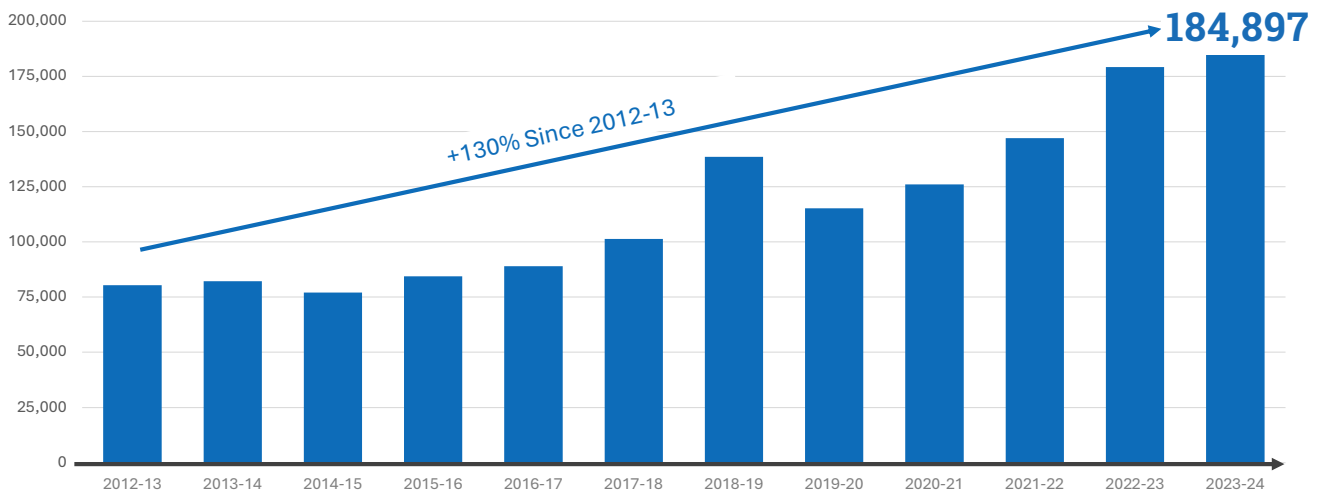


★ Special Education

Special Education Full and Individual Initial Evaluations (FIIIE)

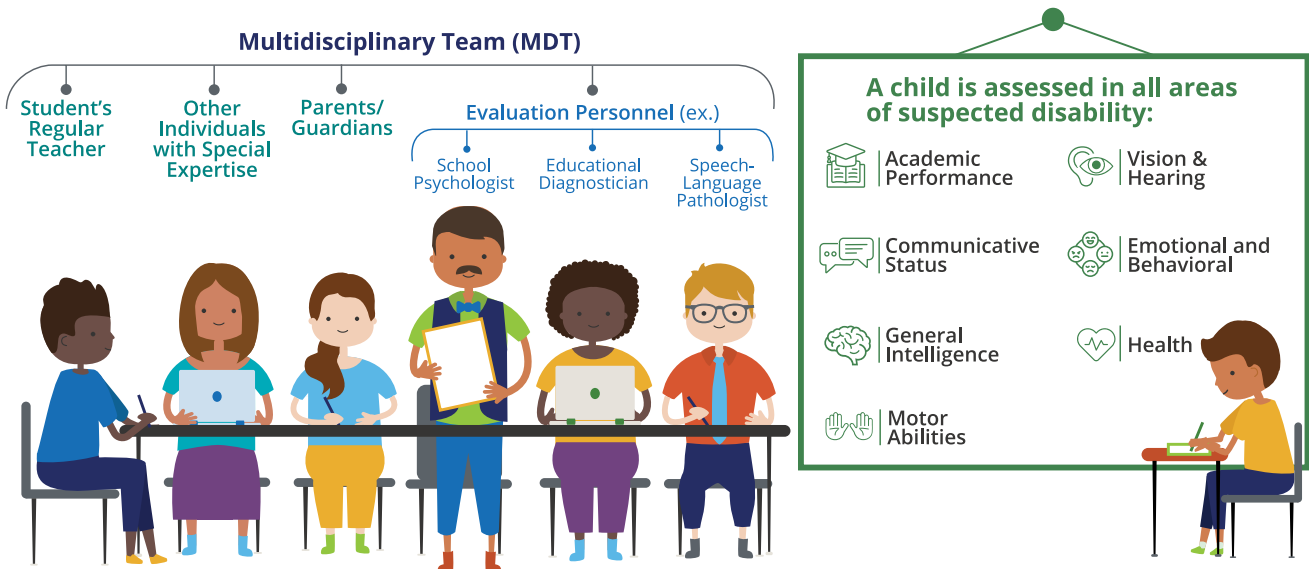
Students who may qualify for special education services have the right to an initial evaluation conducted by educational diagnosticians and other qualified professionals. In recent years, the number of these evaluations has increased significantly.²¹



Conducting Special Education Evaluations

All students who may have a disability, including those not enrolled in public schools, have the right to be evaluated for special education through their local public school.

A child is assessed by a multidisciplinary team of professionals:



Cost of conducting a special education evaluation: **\$1,000 - \$5,000+**

There is no dedicated federal or state funding for public schools to conduct special education evaluations.