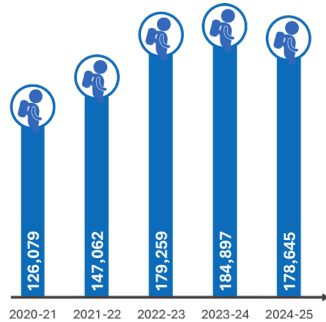
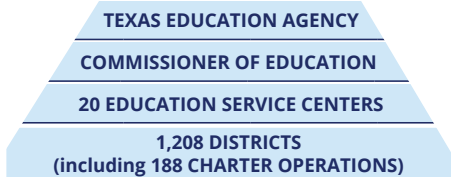
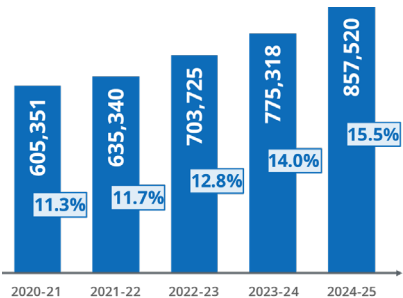


**MORE STUDENTS EVALUATED AND SERVED**

**SPECIAL EDUCATION FULL AND INDIVIDUAL INITIAL EVALUATIONS (FIEE)**



**STUDENTS SERVED BY SPECIAL EDUCATION**



District Size	Enrollment (Fall 2024)	Number of Districts/Charters	% of All Students
50,000 & Over	1,340,384	16	24.18%
25,000-49,999	1,391,628	38	25.10%
10,000-24,999	1,145,211	72	20.66%
5,000-9,999	610,097	85	11.00%
3,000-4,999	322,274	85	5.81%
1,600-2,999	292,101	137	5.27%
1,000-1,599	181,897	145	3.28%
500-999	159,895	226	2.88%
Under 500	100,768	404	1.82%
<b>Total</b>	<b>5,544,255</b>	<b>1,208</b>	<b>100.00%</b>

**9,088 CAMPUSES (958 INCLUDING CHARTERS)**

Campus Type	Enrollment (Fall 2024)	Number of Campuses	% of All Students
Elementary School	2,563,617	4,904	46.24%
Elementary/Secondary	287,382	656	5.18%
Middle School	961,059	1,464	17.33%
Junior High School	140,528	230	2.53%
High School	1,591,669	1,834	28.71%
<b>Total</b>	<b>5,544,255</b>	<b>9,088</b>	<b>100.00%</b>

DISTRICT STAFF BY CATEGORY		
Category	Full-Time Equivalents	Avg. Base Salary
Teachers	369,732	\$63,749
Campus Administration	25,687	\$88,787
Central Administration	9,554	\$118,447
Professional Support	83,066	\$75,884
<b>Total Professionals</b>	<b>488,039</b>	<b>\$68,203</b>
Paraprofessionals	82,014	\$25,476
Auxiliary Staff	195,314	\$33,300
<b>Total Staff</b>	<b>765,368</b>	<b>\$54,718</b>

**TEACHER PROFILES**

		Full-Time Equivalents	% of Total
Gender	Females	278,768	75.40%
	Males	90,964	24.60%
Ethnicity	African American	47,168	12.76%
	American Indian or Alaska Nat.	1,236	0.33%
	Asian	8,295	2.24%
	Hispanic/Latino	114,609	31.00%
	Native Hawaiian/ Other Pacific	467	0.13%
	White	193,144	52.24%
Experience	Two or More Races	4,813	1.30%
	First Year	27,002	7.30%
	1-5 years	104,458	28.25%
	6-10 years	72,863	19.71%
	11-20 years	101,949	27.57%
20+ years	63,451	17.16%	
	NOT AVAILABLE*	9	0.00%

\*Charter Partner Teachers do not have EXPERIENCE  
 Note: The numbers that appear in the FTE Count column are "Full Time Equivalent (FTE)" counts rather than headcounts or persons.

**TEACHER INCENTIVE ALLOTMENT (2024-25)**

- 42,294** Active Designated Teachers
- 39,734** Designated Teachers That Generated an Allotment
- \$481M** TIA Allotment Payout

- 13,908** Recognized designated teachers  
**\$5,577** average funding per teacher
- 17,908** Exemplary designated teachers  
**\$11,069** average funding per teacher
- 10,478** Master designated teachers  
**\$20,912** average funding per teacher

**DISTRICT SUMMARY**

- 809** Total Participating Districts (Accepted System)
- 4,520,818** Texas Students in TIA Participating Districts
- 475** Total Rural Districts Participating (Accepted System)

**TEA STRATEGIC PRIORITIES**

EVERY CHILD, PREPARED FOR SUCCESS IN COLLEGE, CAREER, OR THE MILITARY

- RECRUIT, SUPPORT AND RETAIN TEACHERS AND PRINCIPALS
- BUILD A FOUNDATION FOR READING AND MATH
- CONNECT HIGH SCHOOL TO CAREER AND COLLEGE
- IMPROVE LOW-PERFORMING SCHOOLS

**KEY ACTIONS**

- SUPPORTED EDUCATORS
- READY STUDENTS
- RIGOROUS ENGAGEMENT
- ALIGNED SYSTEMS
- ACTIONABLE GOALSETTING

CONTINUOUS IMPROVEMENT

tea.texas.gov | TXschools.gov | TexasAssessment.gov

Information contained in this pamphlet was compiled from data provided by the PEIMS collection, the TAPR, the TEA Payment Report, and the General Appropriations Act.

For more information, contact:  
 Texas Education Agency  
 Division of Communications: (512) 463-9000  
[www.tea.texas.gov/communications/pocket-edition/](http://www.tea.texas.gov/communications/pocket-edition/)

**POCKET EDITION**  
 2024-25 Texas Public School Statistics

Texas Education Agency  
 Mike Morath, Commissioner of Education

The Texas public school system consists of:

- 1,208 school districts and charters
- 9,088 campuses
- 369,732 teachers
- 5.544 million students



STUDENTS BY DEMOGRAPHIC GROUP

	# of Students	% of Total	% Change (2024)
African American	707,648	12.8%	0.0%
American Indian or Alaska Nat	18,224	0.3%	1.6%
Asian	308,431	5.6%	4.1%
Hispanic/Latino	2,967,187	53.5%	0.9%
Native Hawaiian/Other Pacific	8,744	0.2%	-1.1%
White	1,352,852	24.4%	-2.3%
Two or More Races	181,169	3.3%	4.2%
<b>Total</b>	<b>5,544,255</b>	<b>100.0%</b>	<b>0.2%</b>
Economically Disadvantaged	3,349,612	60.4%	-2.6%
Emergent Bilingual/English Learners	1,345,042	24.3%	-0.1%

STUDENTS BY GRADE

	# of Students	% of Total	% Change (2024)
Early Education	26,099	0.5%	-2.8%
Pre-kindergarten	249,875	4.5%	0.5%
Kindergarten	359,871	6.5%	-0.5%
Grade 1	378,335	6.8%	-1.9%
Grade 2	390,170	7.0%	-3.1%
Grade 3	406,747	7.3%	1.6%
Grade 4	405,715	7.3%	1.6%
Grade 5	405,128	7.3%	1.4%
Grade 6	404,988	7.3%	1.1%
Grade 7	407,512	7.4%	0.5%
Grade 8	410,871	7.4%	-0.8%
Grade 9	460,045	8.3%	-2.7%
Grade 10	439,519	7.9%	0.1%
Grade 11	410,503	7.4%	0.9%
Grade 12	388,877	7.0%	5.7%
<b>Total</b>	<b>5,544,255</b>	<b>100.0%</b>	<b>0.2%</b>

COMPLETION GRADES 9-12 (CLASS OF 2024)

	Graduated	Rec'd TxCHSE*	Cont'd H.S.	Dropped Out (4-yr.)
African American	86.9%	0.3%	4.0%	8.8%
American Indian	89.8%	0.4%	2.8%	7.0%
Asian	97.1%	0.1%	1.6%	1.1%
Hispanic	89.3%	0.3%	3.6%	6.8%
Pacific Islander	89.7%	0.0%	3.3%	7.1%
White	94.4%	0.4%	1.9%	3.2%
Two or More Races	91.9%	0.4%	2.7%	5.0%
Special Ed	80.9%	0.2%	10.3%	8.6%
Econ. Disadv.	88.2%	0.3%	3.6%	7.8%
EB/EL	85.7%	0.1%	4.0%	10.2%
<b>State</b>	<b>90.7%</b>	<b>0.3%</b>	<b>3.1%</b>	<b>5.8%</b>

\*Note: Texas Certificate of High School Equivalency.

PERCENT COLLEGE, CAREER and MILITARY READY (CLASS OF 2024)

	College, Career, and Military Ready	College Ready	Career/Military Ready	Approved Industry-Based Certification
African American	74.4%	62.6%	31.7%	27.1%
American Indian	76.9%	65.3%	36.1%	32.8%
Asian	93.2%	90.5%	30.6%	29.3%
Hispanic	80.5%	67.1%	40.0%	36.7%
Pacific Islander	77.9%	65.5%	34.2%	29.9%
White	85.7%	75.0%	39.4%	36.7%
Two or More Races	82.4%	72.2%	34.1%	31.0%
Special Ed	85.1%	67.4%	48.1%	24.2%
Econ. Disadv.	78.9%	64.7%	39.2%	35.3%
EB/EL	76.2%	60.8%	36.1%	32.5%
<b>State</b>	<b>81.8%</b>	<b>70.0%</b>	<b>38.1%</b>	<b>34.9%</b>

STAAR PERCENT AT MEETS GRADE LEVEL OR ABOVE (ALL GRADES)

	All Subjects	Reading	Mathematics	Science	Social Studies
ALL STUDENTS	50%	54%	45%	47%	50%
African American	38%	43%	31%	35%	41%
American Indian	48%	53%	43%	47%	51%
Asian	81%	83%	81%	77%	79%
Hispanic	43%	47%	38%	40%	43%
Pacific Islander	49%	55%	44%	47%	50%
White	63%	69%	57%	62%	63%
Two or More Races	57%	63%	51%	55%	58%
Econ. Dis.	39%	43%	34%	36%	40%

STAAR PERCENT AT MEETS GRADE LEVEL OR ABOVE (ONLY END OF COURSE EXAMS)

	English I	English II	Algebra I	Biology	U.S. History
ALL STUDENTS	49%	55%	45%	61%	68%
African American	38%	43%	33%	49%	59%
American Indian	46%	54%	40%	60%	70%
Asian	83%	84%	83%	90%	90%
Hispanic	42%	47%	40%	53%	62%
Pacific Islander	55%	58%	47%	63%	71%
White	68%	72%	57%	78%	81%
Two or More Races	62%	66%	50%	72%	77%
Econ. Dis.	38%	44%	36%	50%	58%

KINDERGARTEN READINESS

Category	Number Kinder Ready*	Number Assessed	Rate (%) Kinder Ready
All assessed kindergartners	175,009	343,040	51.00%
Eligible, attended public prekindergarten	89,606	162,837	55.00%
Eligible, did not attend public kindergarten	23,687	78,702	30.10%
Not eligible	61,716	101,501	60.80%

To be eligible to attend a state funded prekindergarten program, the child must meet one of the following prekindergarten eligibility criteria:

- is educationally disadvantaged, which means a student eligible to participate in the national free or reduced-price lunch program;
- is unable to speak and comprehend the English language;
- is homeless;
- is the child of an active duty member of the armed forces of the United States;
- is the child of a member of the armed forces who was injured or killed while on active duty;
- is the child of a person eligible for the Star of Texas Award as a peace officer, firefighter, or emergency medical first responder; or
- is or ever has been in foster care.

\*Note: There are 2 kindergarten readiness assessments. Each has its own readiness threshold.

STUDENTS BY PROGRAM

	Number of Students	% of Total	% Change from 2024
Bilingual/ESL Education	1,084,790	19.6%	-1.48%
Gifted & Talented Education	483,373	8.7%	3.03%
Special Education	856,651	15.5%	10.61%

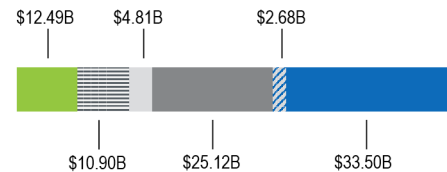
TOTAL PUBLIC EDUCATION SPENDING (FY 2024)

TOTAL FUNDING (BILLION)



TOTAL FUNDING  
**\$89.50B**

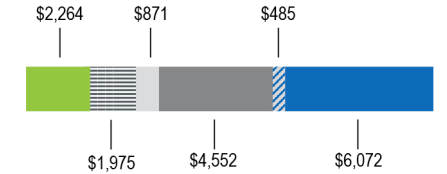
TOTAL FUNDING SNAPSHOT



PER STUDENT FUNDING

**\$16,219**

PER STUDENT FUNDING SNAPSHOT



A NATIONAL COMPARISON

TEXAS VS. NEW YORK: COMPARING FUNDING AND STUDENT OUTCOMES

STATE WITH HIGHER SCALE SCORE ON 2024 NAEP

	4th Reading	4th Math	8th Reading	8th Math
African American	Texas	Texas	New York	New York
Asian	Texas	Texas	Texas	Texas
Hispanic	Texas	Texas	New York	Texas
White	Texas	Texas	Texas	Texas
Econ. Dis.	New York	Texas	New York	New York
Non-Econ. Dis.	New York	Texas	New York	New York

STATE SPENDING COMPARISON 2020-21 SCHOOL YEAR

