



# ANNUAL REPORT

2025



# Contents

---

- 2 A Message From Commissioner Morath
- 3 TEA Strategic Plan
- 4 House Bill 2: Historic School Finance Bill
- 5 Student Demographics
- 6-7 Priority: Recruit, Support and Retain Teachers and Principals
- 8 Priority: Build a Foundation for Reading and Math
- 9 Priority: Connect High School to Career and College
- 10 Priority: Improve Low-Performing Schools
- 11 Special Education
- 12 Assessment
- 13 Accountability
- 14 Supporting Parental Rights
- 15 A National Comparison



▲ Gilmer ISD

## A MESSAGE FROM Commissioner Morath

---

My Fellow Texans,

This year, the Texas Legislature passed House Bill 2—landmark legislation that delivers substantial investments in public education with increased academic resources, a strengthening and expansion of the Teacher Incentive Allotment, a comprehensive upgrade for educator preparation in the state, and well-deserved pay raises for teachers and staff. These actions affirm our shared belief in Texas that those who serve students and deliver results deserve meaningful support and recognition.

While we celebrate these successes, challenges still remain. Far too many students are still performing below grade level, especially in mathematics. While this is a current concern, it is also a call to action for the future. Texas is expanding targeted instructional supports, enhancing professional learning for teachers, and ensuring every child has access to high-quality math materials for both classroom instruction and tutoring. Our goal is clear: ensuring every student, in every classroom, is equipped to succeed.

In the great state of Texas, the future is bright. With new investments, dedicated and prepared educators, and a shared vision for excellence, our state is ready to reach new heights.

Yours in Service,

**Mike Morath**  
Texas Education Commissioner

# Strategic Plan

**VISION**

Every child, prepared for success in college, career, or the military.

**GOAL**

By 2030, at least 60% of Texans will have a degree, certificate, or other postsecondary credential of value as part of Building a Talent Strong Texas.<sup>1</sup>

## Strategic Priorities

**RECRUIT, SUPPORT AND RETAIN TEACHERS AND PRINCIPALS**

Teachers are the most important in-school factor affecting student outcomes.

**BUILD A FOUNDATION FOR READING AND MATH**

Focus on the fundamentals to eliminate the achievement gap.

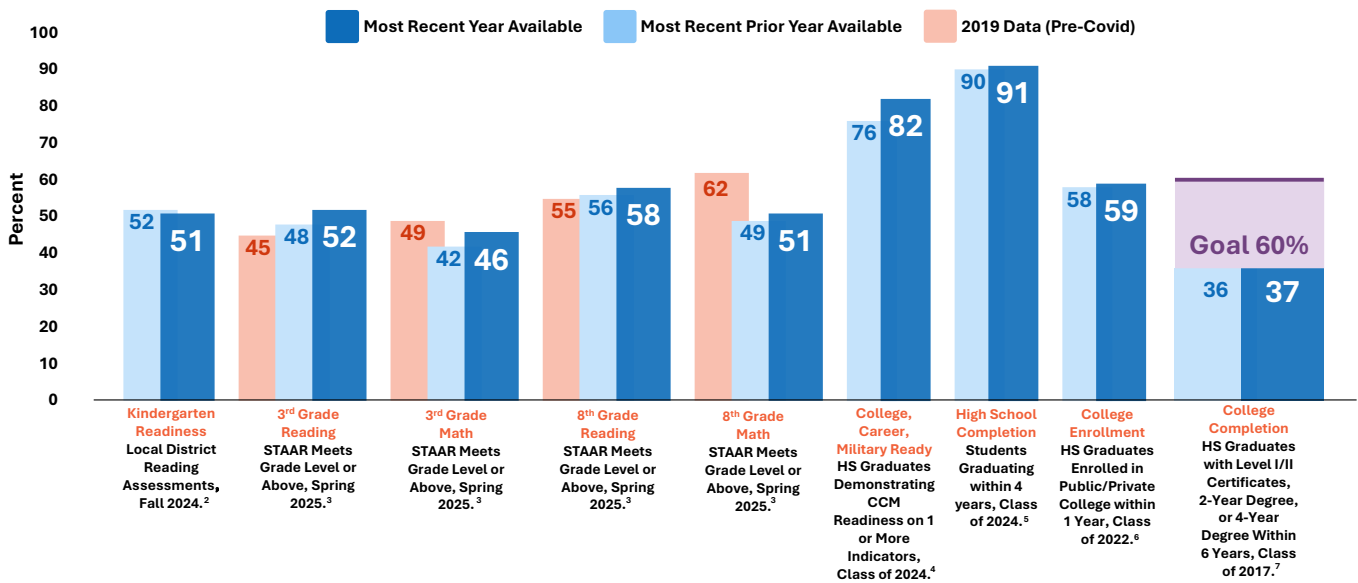
**CONNECT HIGH SCHOOL TO CAREER AND COLLEGE**

Rigor and relevance matter.

**IMPROVE LOW-PERFORMING SCHOOLS**

Every child. Every classroom. Every day.

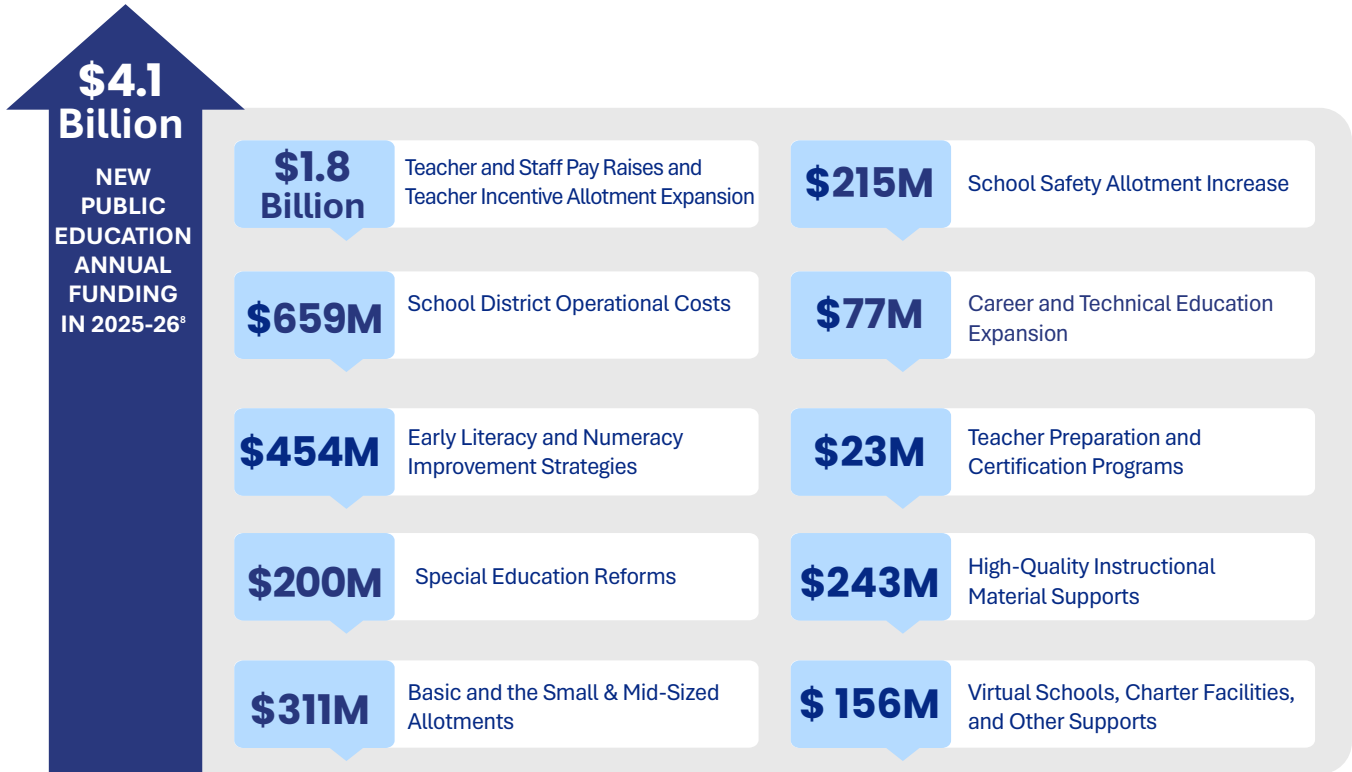
## Year-Over-Year Student Outcomes



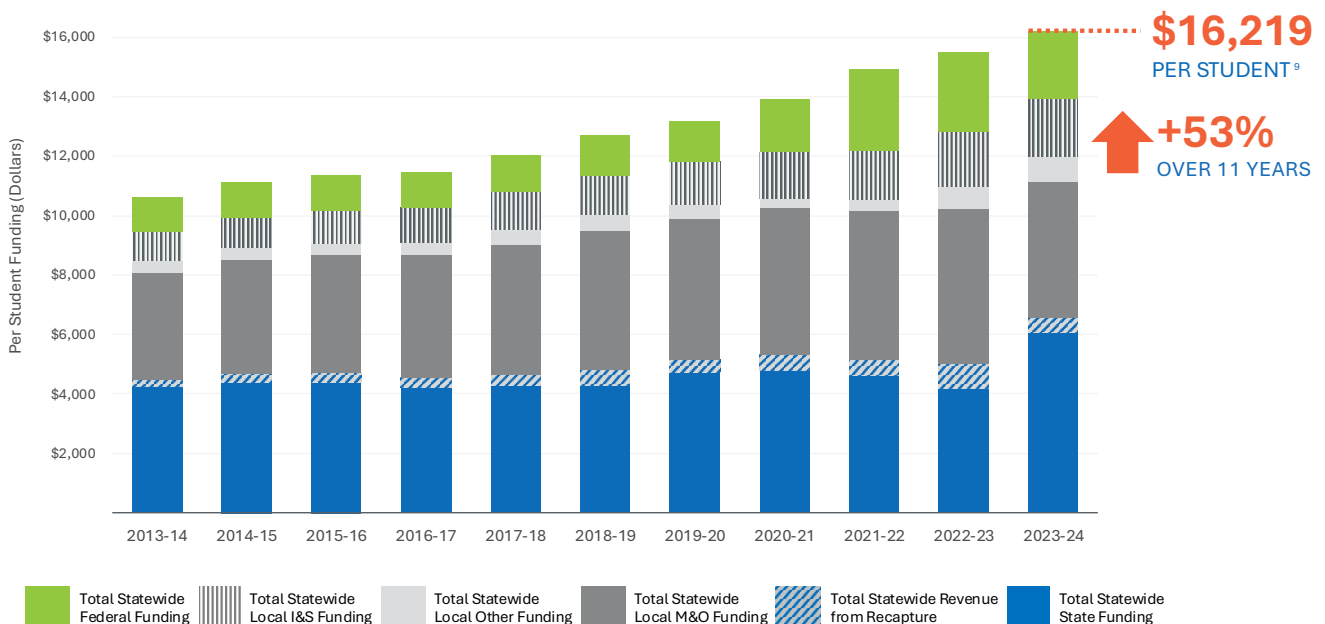
# House Bill 2: Historic School Finance Bill



House Bill 2 is a comprehensive school finance bill that supports students, infusing more dollars into Texas public schools than ever before. Passed by the 89th Texas Legislature and signed by Governor Greg Abbott, this bill provides an additional \$8.5 billion in new funding for public education over the biennium.



## ANNUAL FUNDING PER STUDENT



# Texas Demographics

Everything is bigger in Texas, including our public school system.



**382K TEACHERS<sup>10</sup>**

More than every other state in the U.S.

**1 in 5**



**NON- ENGLISH SPEAKING STUDENTS** in the U.S. is in a Texas classroom<sup>11</sup>

**5.5M STUDENTS<sup>12</sup>**  
2024-25

**2ND LARGEST** public school student population in the U.S.

**857K**

**STUDENTS SERVED IN SPECIAL EDUCATION<sup>13</sup>**



**MOST RURAL STUDENTS** in the U.S.<sup>14</sup>

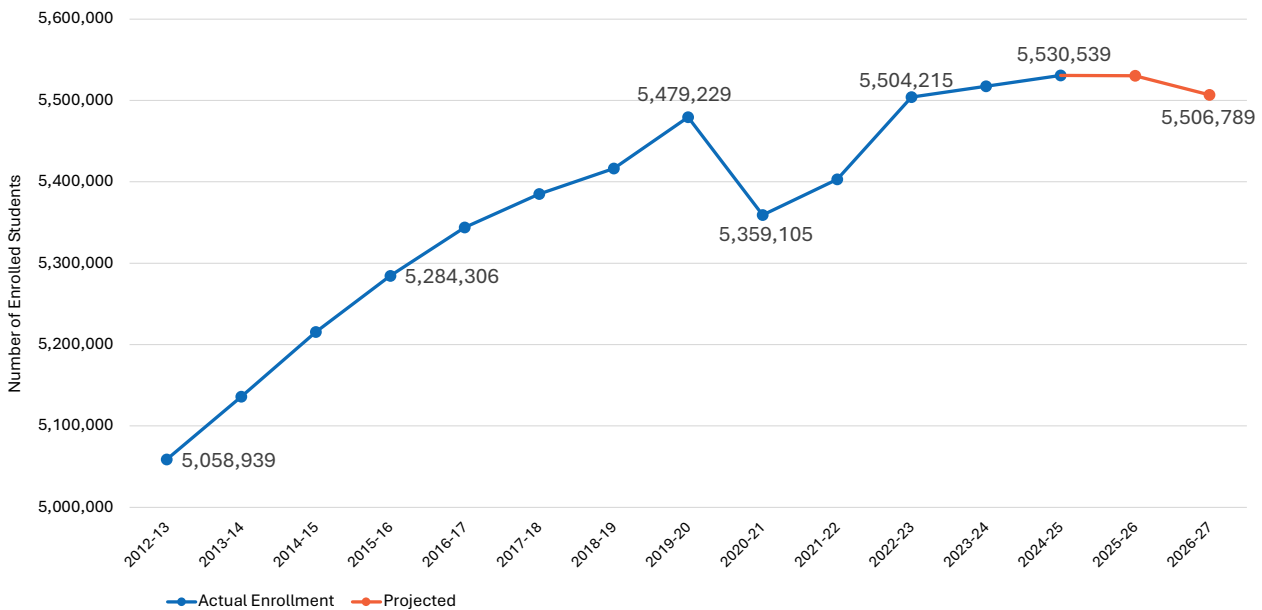


**60%**  
2024-25

**ECONOMICALLY DISADVANTAGED STUDENTS<sup>15</sup>**

## ENROLLMENT TRENDS AND PROJECTIONS<sup>16</sup>

Demographic projections indicate a slight decline in the number of students in Texas in the coming years.





# Recruit, Support and Retain Teachers and Principals

## A SYSTEMIC APPROACH TO SUPPORTING TEACHERS

Attracting talented and well-trained candidates to the teaching profession requires a comprehensive approach built on recruitment, preparation, and compensation. House Bill 2 (HB 2) brings major investments in these areas to strengthen the profession and support educators statewide.



▲ Thrall ISD



**\$400M**  
**EDUCATOR PREPARATION ALLOTMENT**  
 BY 2029-30<sup>18</sup>

### Educator Preparation Pathways

HB 2 established the PREP Program Allotment to strengthen the quality of teacher recruitment, preparation, and mentorship across the state.

## EDUCATOR PREPARATION PATHWAYS



RECRUITMENT



PREPARATION



EARLY CAREER TRAINING

Preparing and Retaining Educators through Partnership (PREP) Allotment includes five formula-funded programs to support teacher recruitment, preparation, and mentorship. Research shows that teachers who receive preservice practice prior to becoming a teacher and receive ongoing mentoring are more effective and more likely to stay in the profession.<sup>17</sup>

## PREPARING AND RETAINING EDUCATORS THROUGH PARTNERSHIP (PREP) ALLOTMENT

### RECRUITMENT

#### Grow Your Own

**\$8,000 up to \$12,000**  
 per teacher candidate  
 in training

### PRESERVICE PREPARATION

#### Residency Preservice

#### Traditional Preservice

#### Alternative Preservice

**\$10,000 up to \$39,500**  
 per teacher candidate  
 in training

### EARLY CAREER TRAINING

#### Mentorship Program

**\$3,000**  
 per teacher in training



HB 2  
TEXAS LEGISLATURE  
89<sup>th</sup> Legislative Session



**\$1.5 Billion**  
TEACHER RETENTION  
ALLOTMENT  
IN 2025-26<sup>18</sup>

HB 2 established the Teacher Retention Allotment to increase teacher pay, with compensation varying based on district size and years of experience.



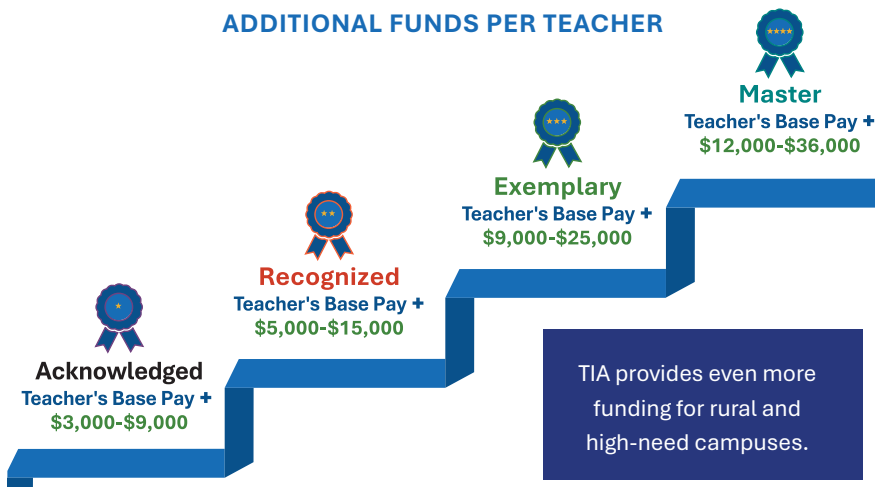
▲ Wanda Salgado,  
Harker Heights Elementary School,  
Killeen ISD



**ENHANCED COMPENSATION**

Teaching is one of the toughest yet most important jobs. Through the Teacher Incentive Allotment (TIA) and new investments in the teaching profession, such as the Teacher Retention Allotment, skilled and effective Texas teachers have more opportunities to earn more, so they can stay in the classroom longer.

**TEACHER INCENTIVE ALLOTMENT  
ADDITIONAL FUNDS PER TEACHER**



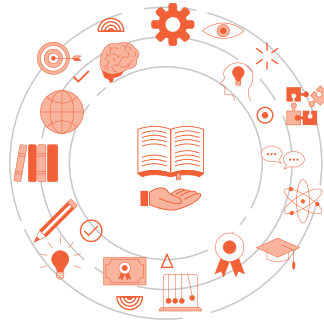
“Becoming a Master teacher through the Teacher Incentive Allotment program has allowed me to stay in the classroom doing the work I love while earning a salary of over \$100,000. This financial stability has been life-changing, allowing me to better care for my daughter and plan for our future without leaving teaching. TIA supports not only teachers and their families, but also students, by helping ensure that highly qualified educators remain in the classroom, particularly in areas where they are needed most.”

# Build a Foundation for Reading and Math

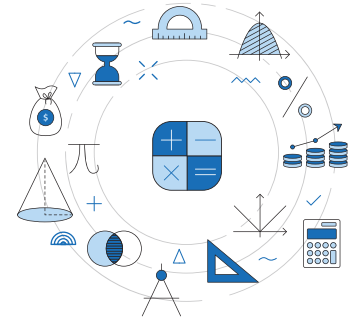
## READING AND MATH ACADEMIES IN TEXAS



House Bill 3 (86R), requires all kindergarten through third grade teachers and principals to be trained through Reading Academies. These academies provide TEKS-aligned, research-based professional learning to strengthen early literacy instruction statewide.



House Bill 2 (89R), requires all kindergarten through third grade math teachers and principals to be trained through Texas Mathematics Academies. The academies deliver TEKS-aligned, research-based professional learning to support effective mathematics instruction in the early grades.



### SUPPORTING OUR TEACHERS AT SCALE

Texas is investing in early reading and math. By 2031, all K-3 teachers and principals must be trained through the Texas Reading and Texas Math Academies. Aspiring teachers will participate in the academies as part of their preparation program.

### READING AND MATH ACADEMIES PARTICIPATION OVER TIME<sup>19</sup>





# Connect High School to Career and College

## United States Armed Forces



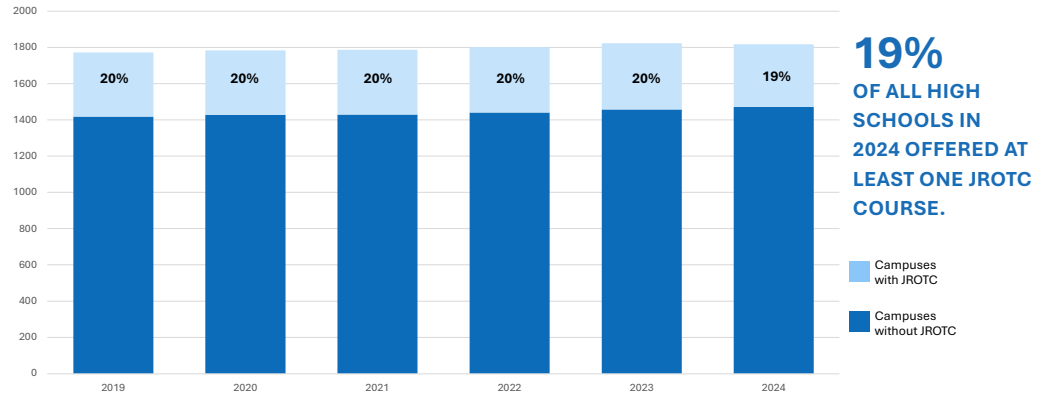
### MILITARY READINESS

Junior Reserve Officers' Training Corps (JROTC) courses offer academic rigor, physical training, and leadership development, all of which are important for preparing students for military service and for life. Starting in 2025-26, JROTC programs receive additional funding as a Career and Technical Education (CTE) program of study, boosting military readiness across Texas.



▲ Mesquite ISD

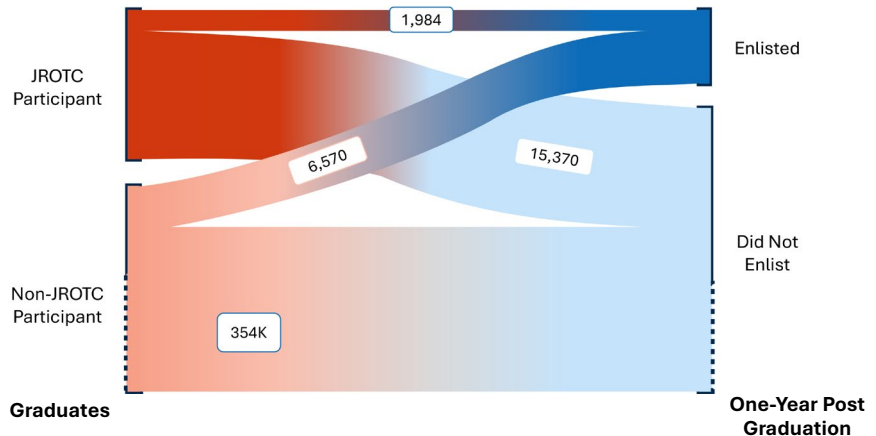
### JROTC HIGH SCHOOL CAMPUSES 2017 - 24<sup>20</sup>



**19%**  
OF ALL HIGH SCHOOLS IN 2024 OFFERED AT LEAST ONE JROTC COURSE.

### MILITARY PATHWAY FOR 2024 GRADUATES<sup>20</sup>

In 2024, approximately 3% of all Texas high school graduates enlisted in the U.S. military. Some of them enlist after completing a JROTC program in high school, which allows them to enlist at a higher rate of pay. Students who successfully complete a JROTC program but who do not enlist can use the leadership skills they've developed as they move on to college and the workforce.





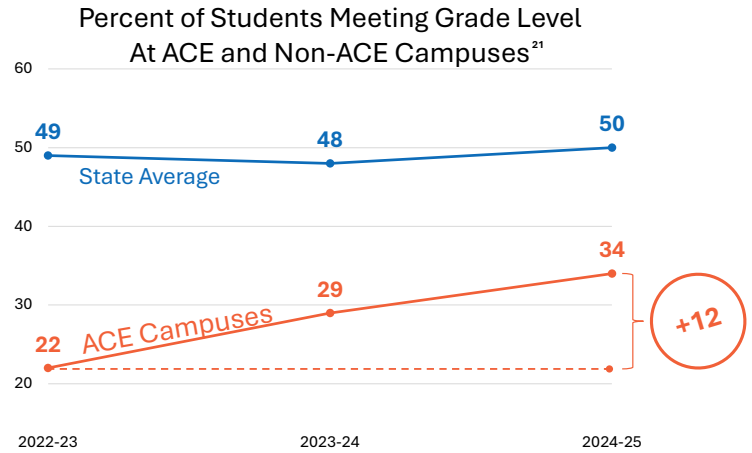
# Improve Low-Performing Schools

## DISTRICT SUCCESS WITH AN ACE MODEL

The Accelerating Campus Excellence (ACE) Model is one of the most successful campus turnaround models developed. ACE campuses must have:

- Strategic Staffing
- Instructional Excellence
- Extended Learning Time
- Wraparound Supports
- Parent and Community Partnerships

Campuses that have adopted the ACE model have seen major academic gains; however, implementing ACE takes resources. As a result, the legislature passed new formula funding for large districts that include ACE as part of a Resource Campus model.



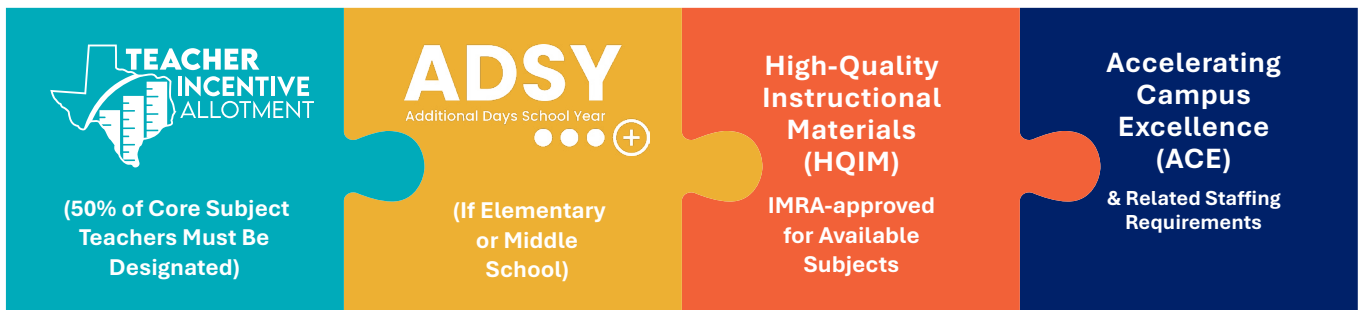
## RESOURCE CAMPUS



Recognizing the proven impact of the ACE Model, the 89th Texas Legislature updated the Resource Campus Designation. To qualify for this additional funding, a district must have received a failing A–F rating in three of the last five years and have more than 5,000 students in Average Daily Attendance (ADA), making them eligible for targeted support to drive meaningful campus improvement.

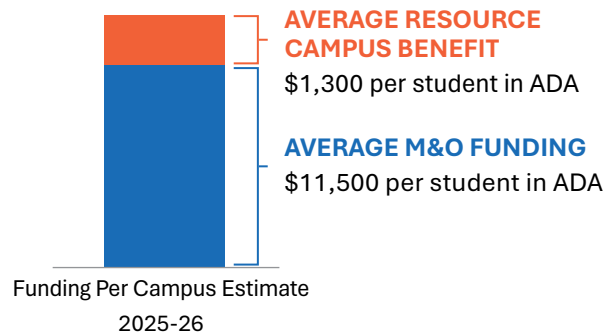
Resource Campuses provide a sustained funding source to campuses that have previously struggled with performance if they implement a set of evidence-based initiatives, including:

### EVIDENCE-BASED INITIATIVES

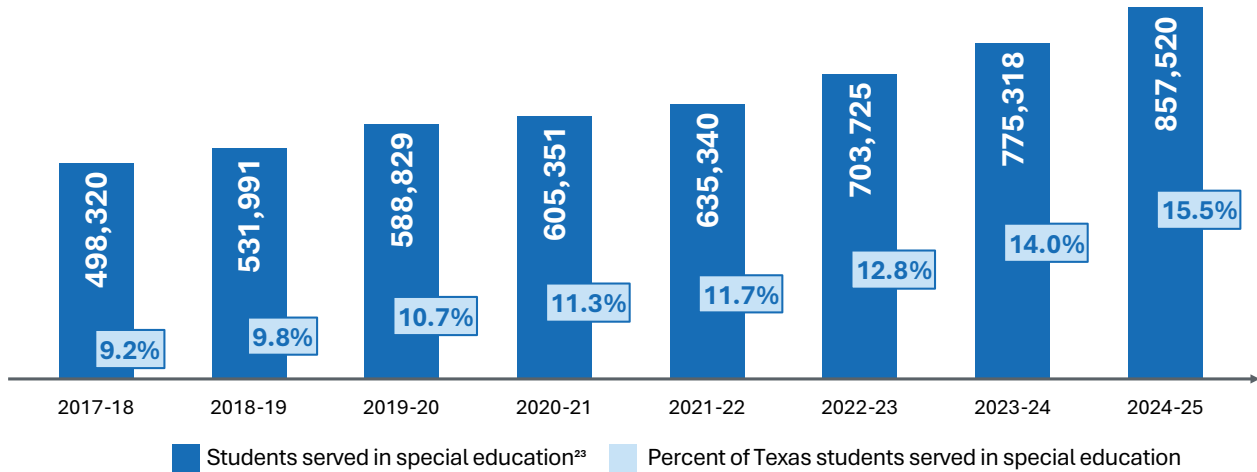


## RESOURCE CAMPUSES FUNDING<sup>22</sup>

Resource Campus funding varies by district, averaging around \$1,300 per ADA. Combined with the other allotments included in the Resource Campus Designation (ADSY, HQIM/IMRA, and TIA), the total funding can be an additional \$3,000 per ADA.

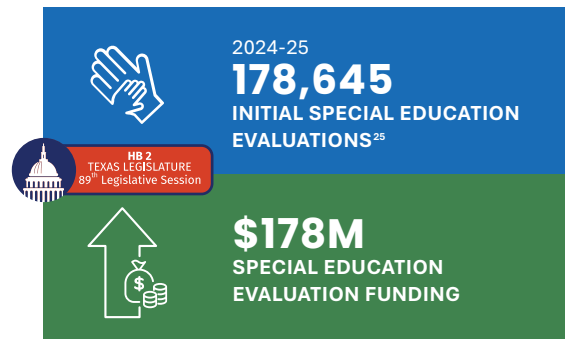


# Special Education Enrollment



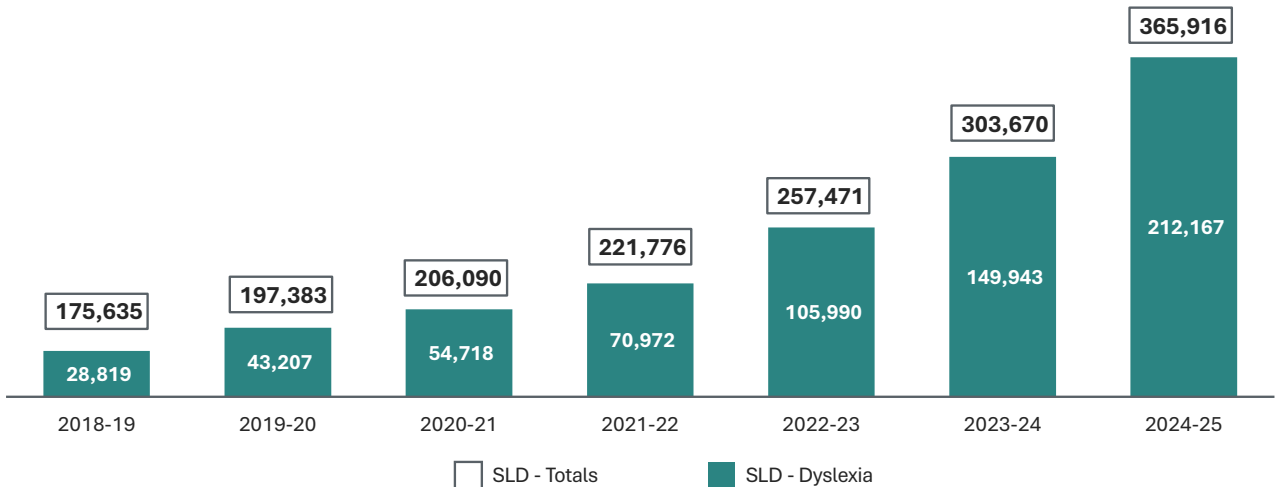
## SPECIAL EDUCATION EVALUATIONS

Students who may qualify for special education services undergo an initial evaluation, and the number of these evaluations has increased significantly in recent years. As part of changes in House Bill 2, new formula funding provides schools with an additional \$1,000 for each initial special education evaluation conducted for any student who may have a disability, including those not enrolled in public schools.



## STUDENTS SERVED THROUGH SPECIAL EDUCATION WITH THE SPECIFIC LEARNING DISABILITY (SLD) OF DYSLLEXIA<sup>24</sup>

House Bill 3928 (88R) required dyslexia to be evaluated as a specific learning disability eligible for special education. As a result, school systems across Texas are serving far higher numbers of students with the specific learning disability of dyslexia. Schools receive additional special education formula funding when serving students with dyslexia as a specific learning disability, along with the dyslexia allotment.



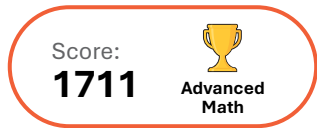
# Assessment

Parents can view their child's STAAR results online at TexasAssessment.gov to see how their child is performing in school. Most parents can conveniently log in through their school's local parent portal. Beginning in the 2027-28 school year, STAAR will be replaced with a new state assessment.



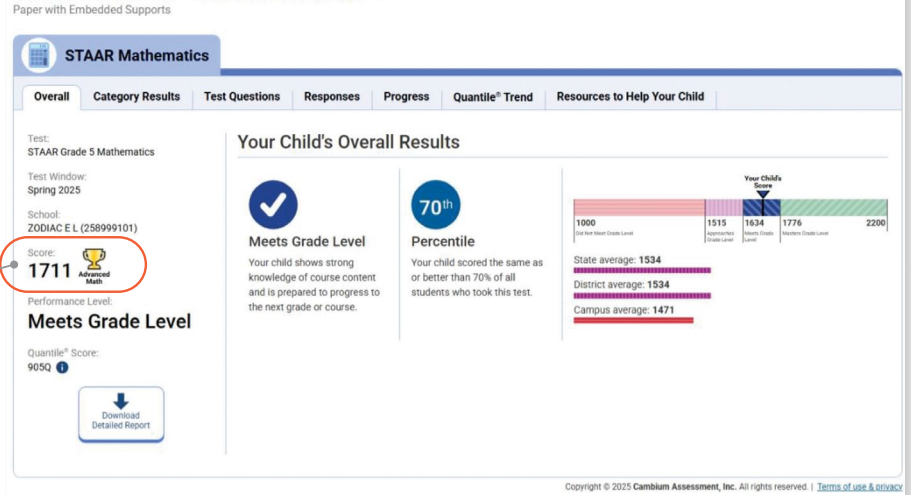
## ADVANCED MATH BADGE

Thanks to the passage of Senate Bill 2124 (88R), students who perform well in elementary mathematics are automatically enrolled in advanced mathematics courses in middle school, while parents retain the right to opt out.



When parents of 5th graders check their students' STAAR scores online, they get notice of this advanced math performance.

### Kid's Results for STAAR Mathematics



## GROWTH CHART PROGRESS YEAR-OVER-YEAR

State assessments are an important resource for understanding grade-level student performance and supporting future academic growth for every child. TexasAssessment.gov provides parents with clear information and easily readable charts of their child's academic progress over time. By monitoring this progress, parents can help their child develop the skills needed for continued achievement.



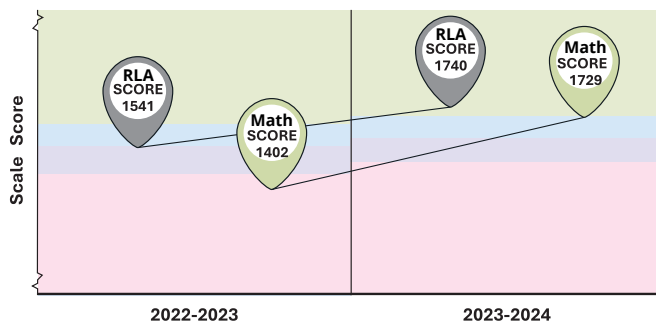
## Progress: From Previous Year

STUDENT

ENROLLED GRADE: 5

Reading Language  
Mathematics

Accelerated Progress

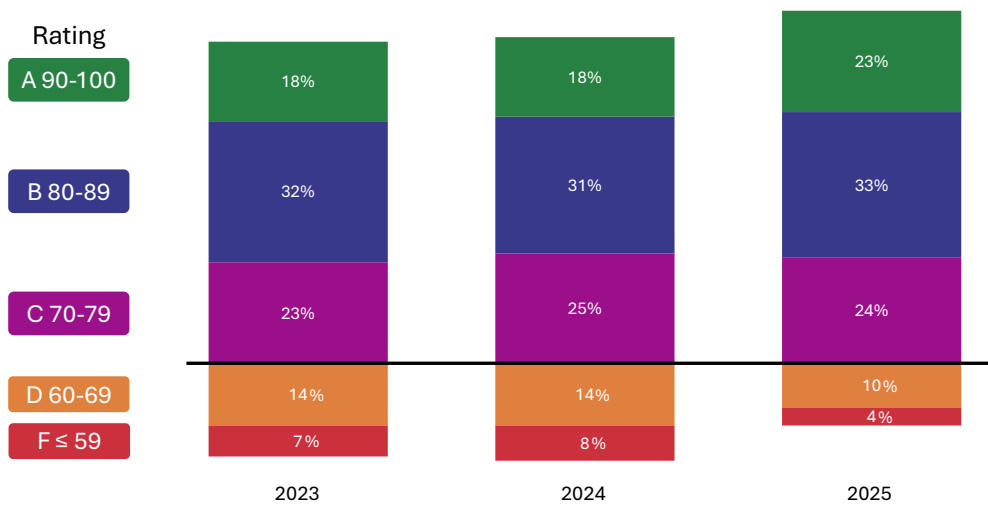


- MASTERS GRADE LEVEL
- MEETS GRADE LEVEL
- APPROACHES GRADE LEVEL
- DID NOT MEET GRADE LEVEL

# Accountability

Annual accountability ratings earned by school districts and campuses are made publicly available, typically in August each year. 2025 marked the return of A–F ratings after two years of lawsuits prevented their release. Data shows campus performance improved in 2025.

## 2023-25 TEXAS A-F CAMPUS RATING TRENDS<sup>26</sup>



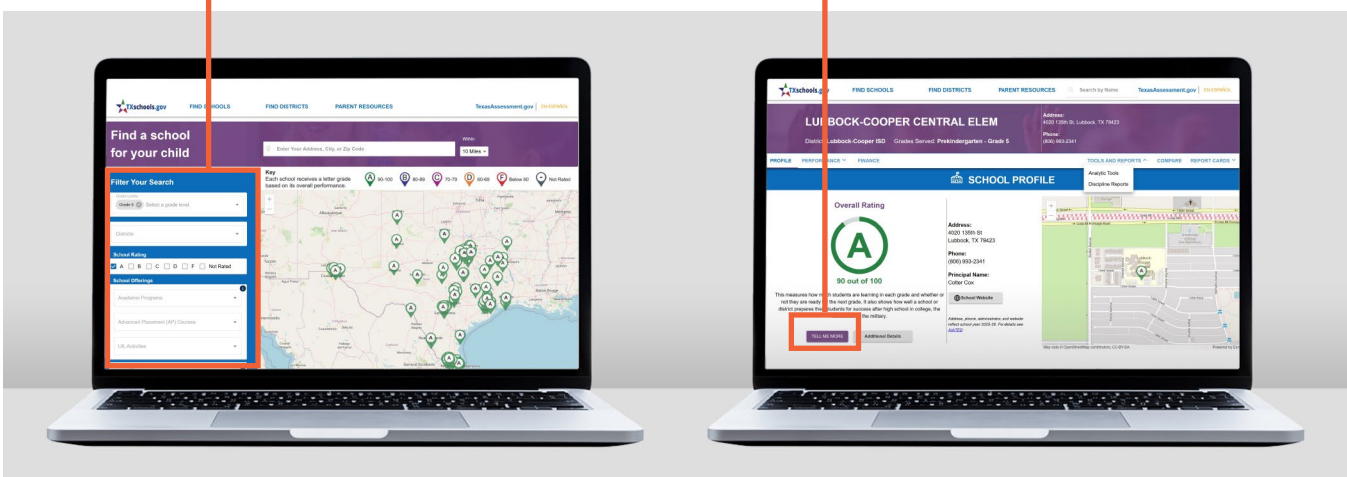
For a complete overview, parents, educators, and community members can visit TXschools.gov. This online resource displays ratings for every school in Texas, highlights achievements, and provides information on programs offered at each campus.

### FIND SCHOOLS

Locate schools and their accountability rating by address or zip code and filter with specific criteria.

### ACCOUNTABILITY RATINGS

Click [Tell Me More](#) to learn how accountability ratings are calculated.



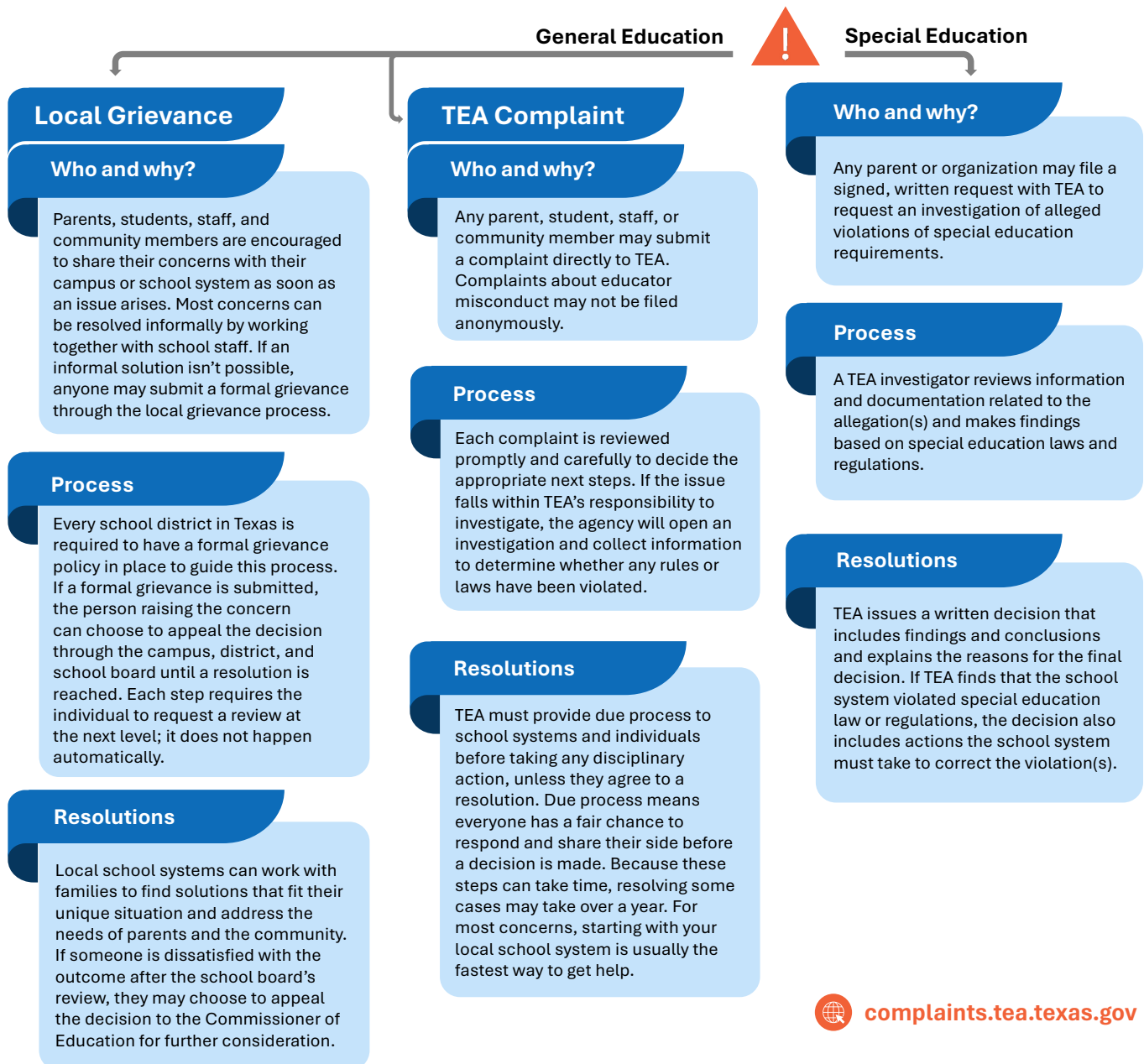
# Supporting Parental Rights



Effective schools start with informed and empowered parents. State law recognizes that students do best when families are involved and respected. Senate Bill 12, passed in the most recent legislative session, significantly expanded parents' rights over the direction of their children's education. The law also strengthened the formal complaint process made available to parents.

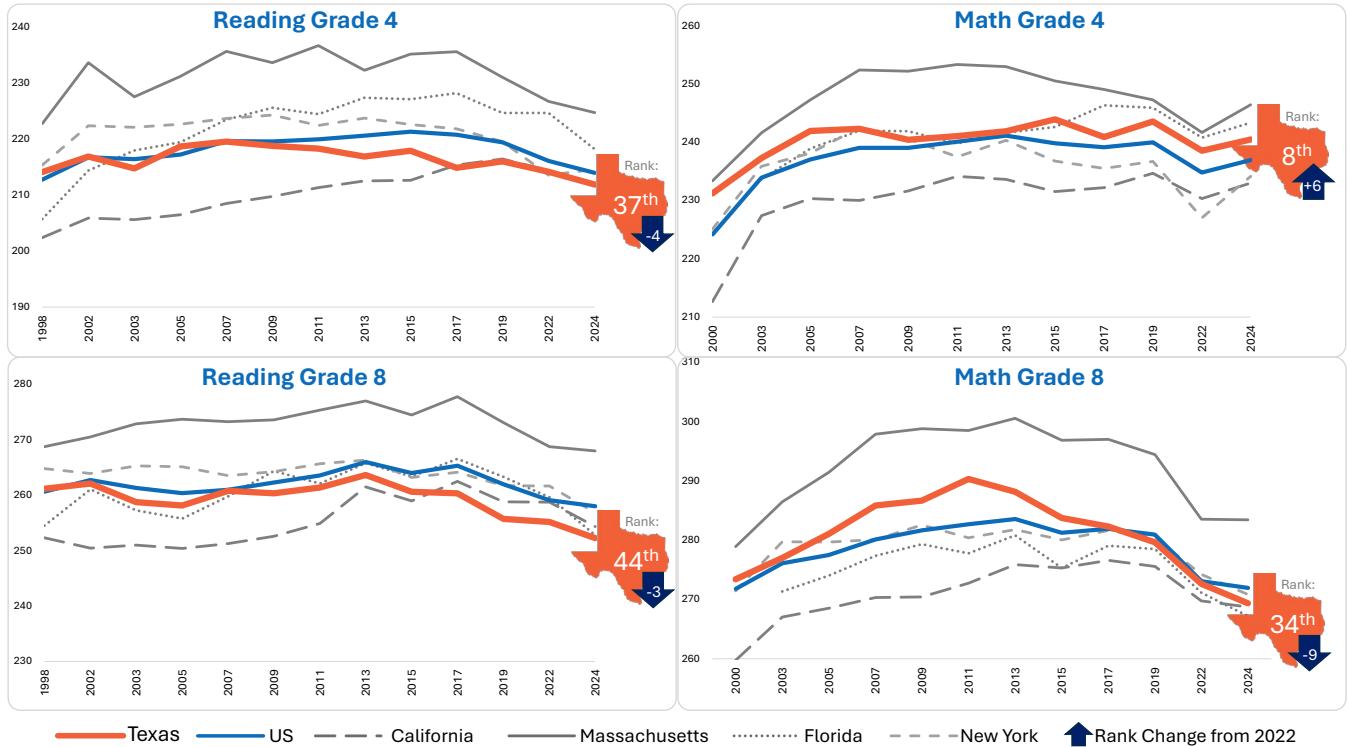
## LOCAL GRIEVANCE AND STATE COMPLAINTS PROCESSES

Ensuring all students are safe and properly supported in Texas public schools is of utmost importance. When a parent has concerns about an issue at a Texas public school, the best first step is usually to reach out to the school to have it addressed informally, by speaking with the teacher or principal. If that action does not resolve the concern, the local grievance process is designed to help resolve parental concerns with their public school.



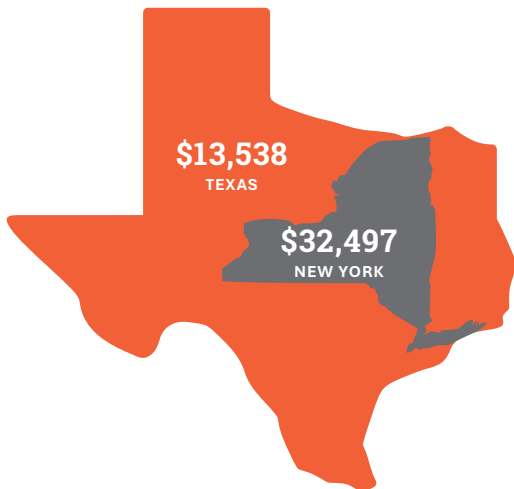
# A National Comparison

Results from the 2024 Nation’s Report Card, the National Assessment of Educational Progress (NAEP), provide a comparison of the academic achievement of Texas students with students in other states.<sup>27</sup>



## TEXAS VS. NEW YORK: COMPARING FUNDING AND STUDENT OUTCOMES

### STATE SPENDING COMPARISON 2020-21 SCHOOL YEAR<sup>28</sup>



### STATE WITH HIGHER SCALE SCORE ON 2024 NAEP

	4 <sup>th</sup> Reading	4 <sup>th</sup> Math	8 <sup>th</sup> Reading	8 <sup>th</sup> Math
African American	Texas	Texas	New York	New York
Asian	Texas	Texas	Texas	Texas
Hispanic	Texas	Texas	New York	Texas
White	Texas	Texas	Texas	Texas
Economically Disadvantaged	New York	Texas	New York	New York
Non-Economically Disadvantaged	New York	Texas	New York	New York



[tea.texas.gov](https://tea.texas.gov) | [TXschools.gov](https://TXschools.gov) | [texasassessment.gov](https://texasassessment.gov)

Citations are available at [tea.texas.gov/annualreport](https://tea.texas.gov/annualreport)



@TexasEducationAgency

Copyright © 2026, Texas Education Agency. All Rights Reserved.