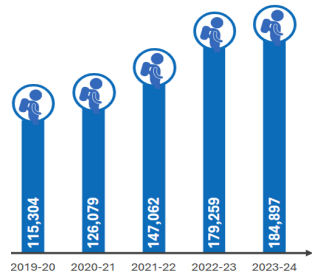
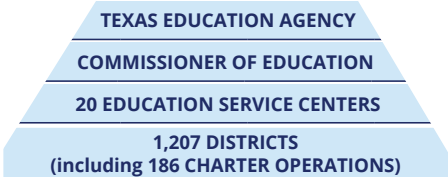
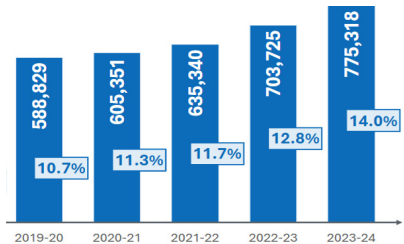


MORE STUDENTS EVALUATED AND SERVED

SPECIAL EDUCATION FULL AND INDIVIDUAL INITIAL EVALUATIONS (FIEE)



STUDENTS SERVED BY SPECIAL EDUCATION



District Size	Enrollment (Fall 2023)	Number of Districts/Charters	% of All Students
50,000 & Over	1,352,390	16	24.45%
25,000-49,999	1,372,622	37	24.82%
10,000-24,999	1,122,697	70	20.30%
5,000-9,999	611,230	85	11.05%
3,000-4,999	332,888	87	6.01%
1,600-2,999	286,607	133	5.18%
1,000-1,599	191,255	151	3.46%
500-999	160,222	227	2.90%
Under 500	101,325	401	1.83%
Total	5,531,236	1,207	100.00%

9,088 CAMPUSES (INCLUDING 916 CHARTERS)

Campus Type	Enrollment (Fall 2023)	Number of Campuses	% of All Students
Elementary School	2,571,541	4,943	46.49%
Elementary/Secondary	264,395	628	4.78%
Middle School	958,919	1,454	17.34%
Junior High School	149,422	246	2.70%
High School	1,586,959	1,817	28.69%
Total	5,531,236	9,088	100.00%

DISTRICT STAFF BY CATEGORY

Category	Full-Time Equivalents	Avg. Base Salary
Teachers	374,922	\$62,463
Campus Administration	25,836	\$86,738
Central Administration	9,488	\$116,028
Professional Support	86,316	\$73,758
Total Professionals	496,562	\$66,713
Paraprofessionals	88,258	\$24,963
Auxiliary Staff	191,701	\$33,173
Total Staff	776,521	\$53,688

TEACHER PROFILES

	Full-Time Equivalents	% of Total
Gender	Females	283,092 (75.50%)
	Males	91,830 (24.49%)
Ethnicity	African American	47,347 (12.62%)
	American Indian or Alaska Nat.	1,289 (0.34%)
	Asian	7,917 (2.11%)
	Hispanic/Latino	112,970 (30.13%)
	Native Hawaiian/ Other Pacific	491 (0.13%)
	White	200,180 (53.39%)
	Two or More Races	4,727 (1.26%)
	Experience	First Year
	1-5 years	102,632 (27.37%)
	6-10 years	75,600 (20.16%)
	11-20 years	101,433 (27.05%)
	20+ years	62,688 (16.72%)
	NOT AVAILABLE*	57 (0.01%)

*Charter Partner Teachers do not have EXPERIENCE
 Note: The numbers that appear in the FTE Count column are "Full Time Equivalent (FTE)" counts rather than head counts or number of persons.

TEACHER INCENTIVE ALLOTMENT (2023-24)

26,989 Active Designated Teachers

24,941 Designated Teachers That Generated an Allotment

\$292,512,319 TIA Allotment Payout

10,594 Recognized designated teachers

\$5,860 average funding per teacher

10,919 Exemplary designated teachers

\$11,436 average funding per teacher

5,476 Master designated teachers

\$21,239 average funding per teacher

DISTRICT SUMMARY

597 Total Participating Districts (Accepted System)

3,845,392 Texas Students in TIA Participating Districts

329 Total Rural Districts Participating (Accepted System)

TEA STRATEGIC PRIORITIES

EVERY CHILD, PREPARED FOR SUCCESS IN COLLEGE, CAREER, OR THE MILITARY

STRATEGIC PRIORITIES	RECRUIT, SUPPORT AND RETAIN TEACHERS AND PRINCIPALS	BUILD A FOUNDATION FOR READING AND MATH	CONNECT HIGH SCHOOL TO CAREER AND COLLEGE	IMPROVE LOW-PERFORMING SCHOOLS	
KEY ACTIONS	SUPPORTED EDUCATORS	READY STUDENTS	RIGOROUS ENGAGEMENT	ALIGNED SYSTEMS	ACTIONABLE GOALSETTING

CONTINUOUS IMPROVEMENT

Information contained in this pamphlet was compiled from data provided by the PEIMS collection, the TAPR, the TEA Payment Report, and the General Appropriations Act.

For more information, contact:
 Texas Education Agency
 Division of Communications: (512) 463-9000
www.tea.texas.gov/communications/pocket-edition/

For additional copies of this brochure, visit:
www.tea.texas.gov/publications/info/

January 2025

POCKET EDITION
 2023-24 Texas Public School Statistics



Texas Education Agency
 Mike Morath
 Commissioner of Education

The Texas public school system consists of:

- 1,207 school districts and charters
- 9,088 campuses
- 374,922 teachers
- 5.531 million students

STUDENTS BY DEMOGRAPHIC GROUP

	# of Students	% of Total	% Change (2023)
African American	707,609	12.8%	0.1%
American Indian or Alaska Nat	17,939	0.3%	-0.2%
Asian	296,367	5.4%	5.6%
Hispanic/Latino	2,942,144	53.2%	0.7%
Native Hawaiian/Other Pacific	8,844	0.2%	1.4%
White	1,384,437	25.0%	-2.2%
Two or More Races	173,896	3.1%	4.4%
Total	5,531,236	100.0%	0.2%
Economically Disadvantaged	3,439,856	62.2%	0.5%
Emergent Bilingual/English Learners	1,345,917	24.3%	5.9%

STUDENTS BY GRADE

	# of Students	% of Total	% Change (2023)
Early Education	26,847	0.5%	6.9%
Pre-kindergarten	248,576	4.5%	1.8%
Kindergarten	361,799	6.5%	-1.6%
Grade 1	385,471	7.0%	-3.5%
Grade 2	402,576	7.3%	1.7%
Grade 3	400,181	7.2%	1.6%
Grade 4	399,422	7.2%	1.4%
Grade 5	399,419	7.2%	1.0%
Grade 6	400,511	7.2%	0.2%
Grade 7	405,298	7.3%	-1.0%
Grade 8	414,195	7.5%	-2.7%
Grade 9	472,783	8.5%	-1.1%
Grade 10	439,298	7.9%	0.5%
Grade 11	406,966	7.4%	5.4%
Grade 12	367,894	6.7%	0.4%
Total	5,531,236	100.0%	0.2%

COMPLETION GRADES 9-12 (CLASS OF 2023)

	Graduated	Rec'd TxCHSE*	Cont'd H.S.	Dropped Out (4-yr.)
African American	86.7%	0.3%	3.9%	9.1%
American Indian	89.3%	0.3%	2.5%	7.8%
Asian	96.9%	0.1%	1.7%	1.3%
Hispanic	88.6%	0.3%	3.6%	7.5%
Pacific Islander	88.3%	0.6%	4.2%	6.9%
White	94.2%	0.5%	2.0%	3.4%
Two or More Races	91.7%	0.4%	2.8%	5.1%
Special Ed	80.7%	0.2%	10.3%	8.9%
Econ. Disadv.	87.4%	0.3%	3.8%	8.5%
EB/EL	82.6%	0.1%	4.2%	13.0%
State	90.3%	0.3%	3.1%	6.3%

*Note: Texas Certificate of High School Equivalency.

PERCENT COLLEGE, CAREER and MILITARY READY (CLASS OF 2023)

	College, Career, and Military Ready	College Ready	Career/Military Ready	Approved Industry-Based Certification
African American	66.2%	50.1%	31.3%	26.9%
American Indian	71.8%	58.7%	34.0%	30.8%
Asian	90.9%	87.5%	28.2%	27.0%
Hispanic	75.0%	58.3%	39.2%	36.2%
Pacific Islander	67.6%	56.6%	26.5%	23.5%
White	81.1%	69.5%	35.4%	32.8%
Two or More Races	75.1%	64.0%	30.1%	27.7%
Special Ed	82.9%	63.2%	47.0%	22.9%
Econ. Disadv.	72.4%	54.6%	38.6%	35.2%
EB/EL	68.4%	47.3%	37.6%	34.0%
State	76.3%	61.9%	36.4%	33.4%

STAAR PERCENT AT MEETS GRADE LEVEL OR ABOVE (ALL GRADES)

	All Subjects	Reading	Mathematics	Science	Social Studies
ALL STUDENTS	48%	54%	43%	43%	51%
African American	36%	43%	29%	31%	40%
American Indian	47%	53%	42%	44%	50%
Asian	81%	84%	80%	75%	80%
Hispanic	41%	47%	36%	35%	44%
Pacific Islander	48%	54%	42%	41%	51%
White	62%	68%	56%	59%	65%
Two or More Races	57%	63%	50%	52%	59%
Econ. Dis.	38%	43%	33%	32%	40%

STAAR PERCENT AT MEETS GRADE LEVEL OR ABOVE (ONLY END OF COURSE EXAMS)

	English I	English II	Algebra I	Biology	U.S. History
ALL STUDENTS	52%	58%	43%	56%	69%
African American	40%	47%	29%	43%	57%
American Indian	50%	59%	41%	57%	70%
Asian	84%	86%	83%	88%	90%
Hispanic	44%	51%	37%	48%	63%
Pacific Islander	55%	58%	45%	55%	71%
White	71%	75%	56%	75%	82%
Two or More Races	65%	70%	50%	68%	78%
Econ. Dis.	41%	48%	33%	45%	59%

KINDERGARTEN READINESS

Category	Number Kinder Ready*	Number Assessed	Rate (%) Kinder Ready
All assessed kindergartners	174,167	331,956	52.50%
Eligible, attended public prekindergarten	88,451	157,053	56.30%
Eligible, did not attend public kindergarten	24,416	76,516	31.90%
Not eligible	61,300	98,387	62.30%

To be eligible to attend a state funded prekindergarten program, the child must meet one of the following prekindergarten eligibility criteria:

- is educationally disadvantaged, which means a student eligible to participate in the national free or reduced-price lunch program;
- is unable to speak and comprehend the English language;
- is homeless;
- is the child of an active duty member of the armed forces of the United States;
- is the child of a member of the armed forces who was injured or killed while on active duty;
- is the child of a person eligible for the Star of Texas Award as a peace officer, firefighter, or emergency medical first responder; or
- is or ever has been in foster care.

*Note: There are 2 kindergarten readiness assessments. Each has its own readiness threshold.

STUDENTS BY PROGRAM

	Number of Students	% of Total	% Change from 2023
Bilingual/ESL Education	1,101,112	19.9%	4.18%
Gifted & Talented Education	469,170	8.5%	3.41%
Special Education	774,489	14.0%	10.20%

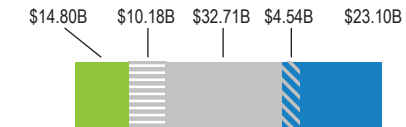
TOTAL PUBLIC EDUCATION SPENDING (FY 2023)

TOTAL FUNDING (BILLION)



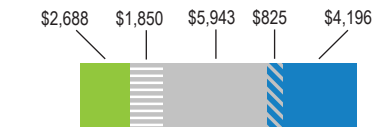
TOTAL FUNDING
\$85.33B

TOTAL FUNDING SNAPSHOT



PER STUDENT FUNDING
\$15,503

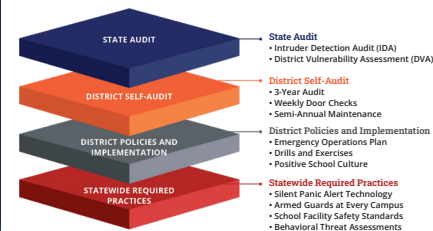
PER STUDENT FUNDING SNAPSHOT



SCHOOL SAFETY

A LAYERED APPROACH TO SAFETY AND SECURITY

Keeping Texas students, educators, and staff safe is a shared responsibility. Schools employ robust security policies and train students and staff on implementation of their district protocols. TEA's Office of School Safety and Security provides on-site technical assistance and conducts comprehensive school safety assessments to ensure alignment with statewide requirements and best practices.



2022-25 FUNDING TO SECURE TEXAS SCHOOLS

