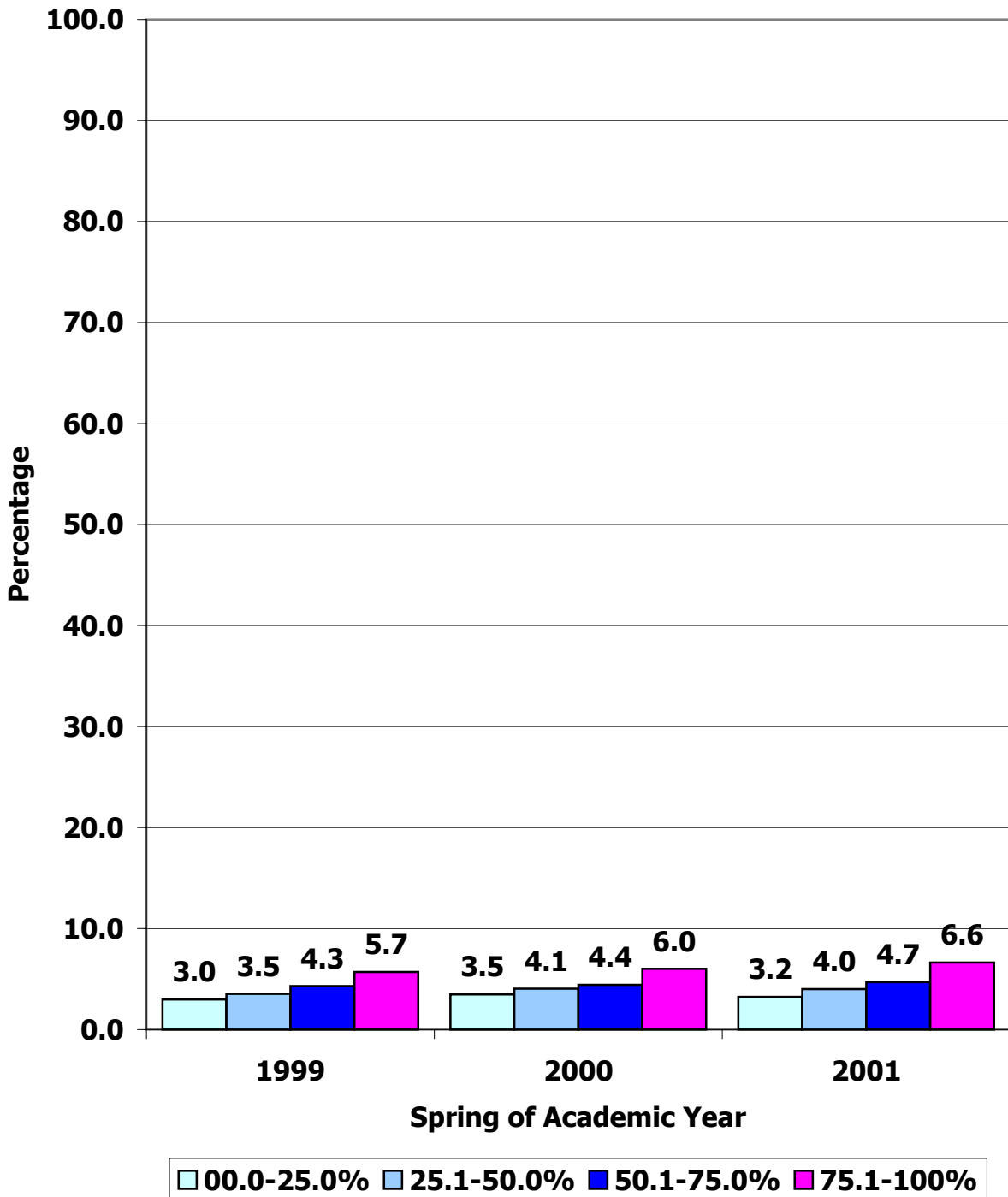
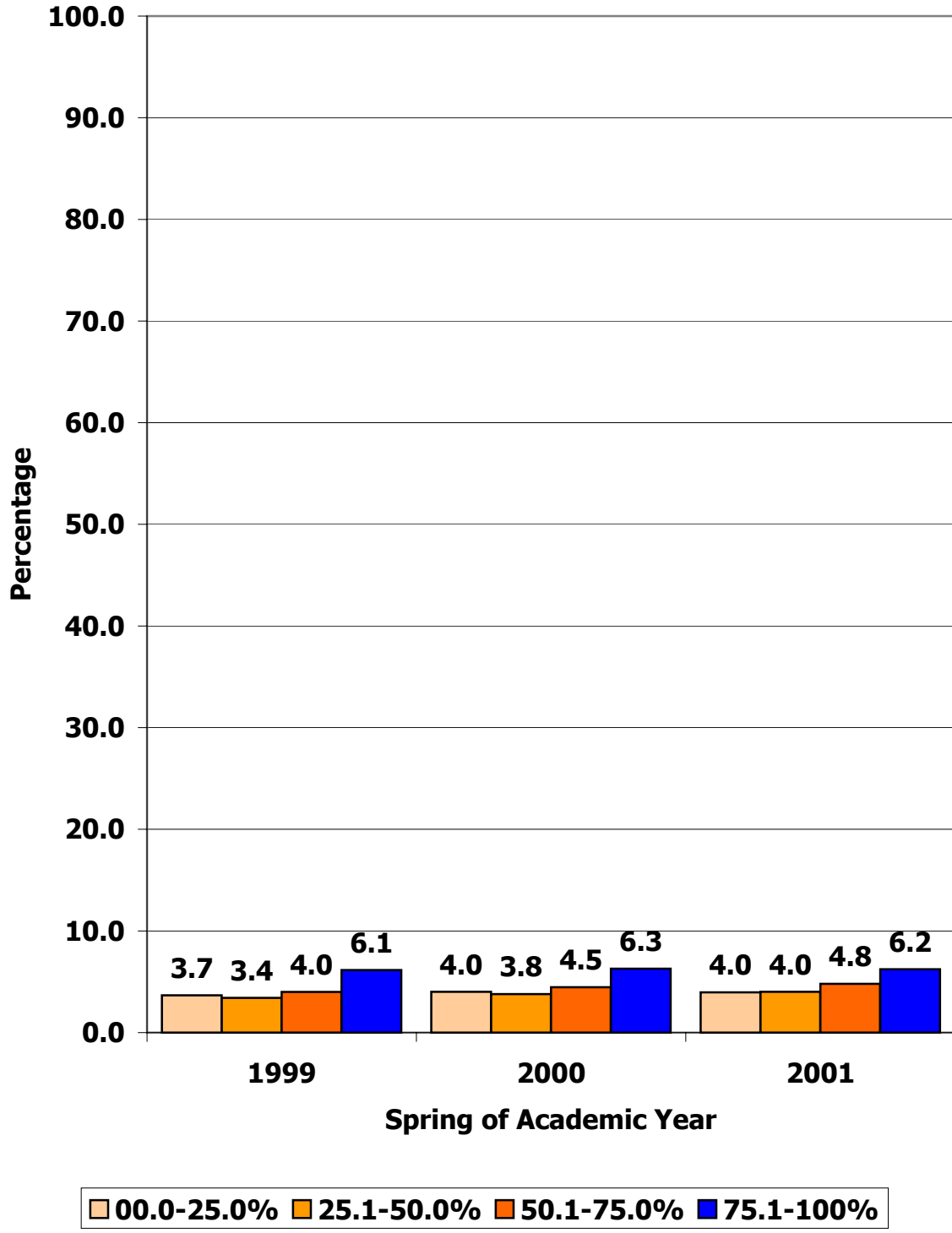


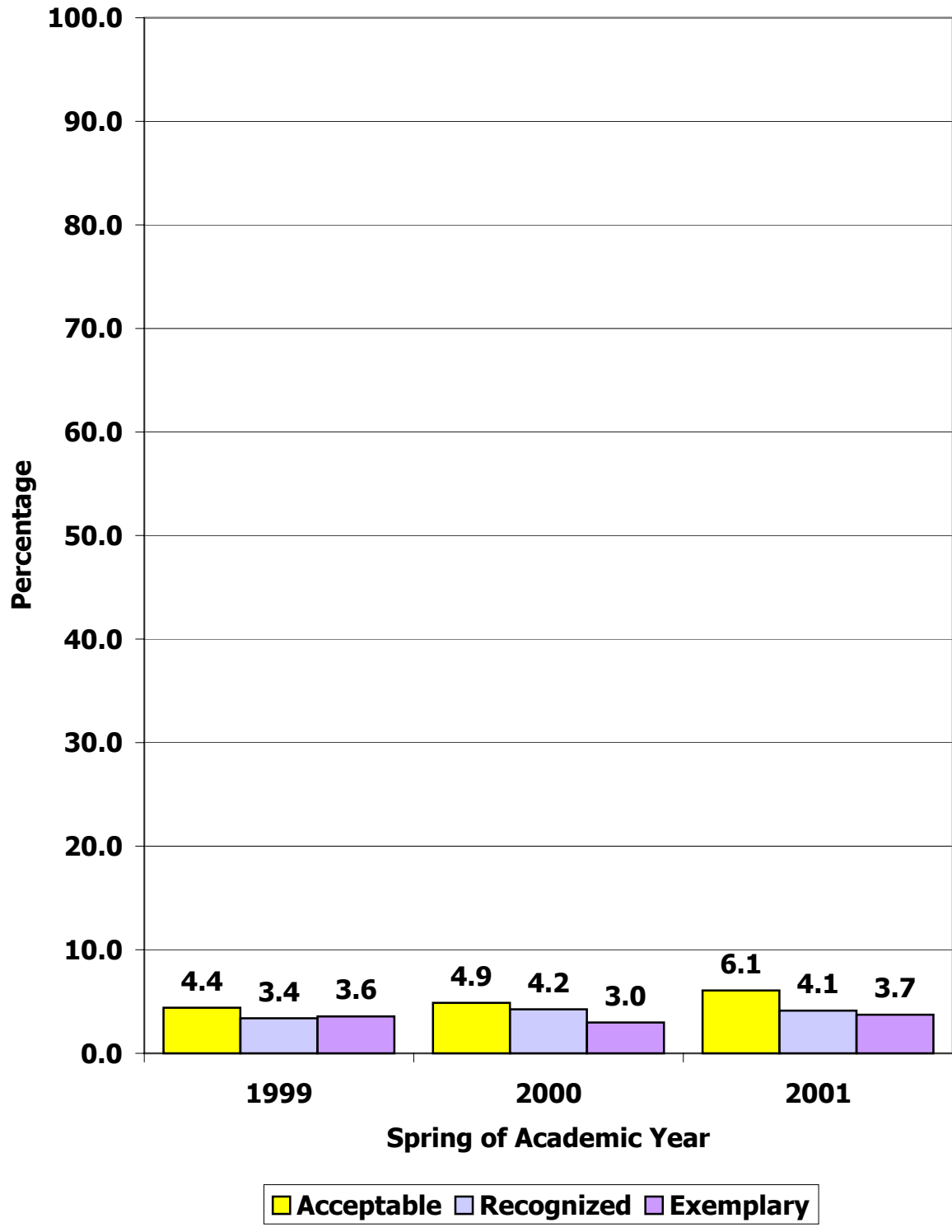
**Percentage of Teachers on Emergency Permits by the
Percentage of Economically Disadvantaged Students
Enrolled in the District (1999 to 2001)**



**Percentage of Teachers on Emergency Permits by the
Percentage of Minority (African American and Hispanic)
Students Enrolled in the District
(1999 to 2001)**



Percentage of Teachers on Emergency Permits by the Accountability Rating of the District (1999 to 2001)



The number of districts rated as "Low-Performing" was too low to provide accurate average percentage: